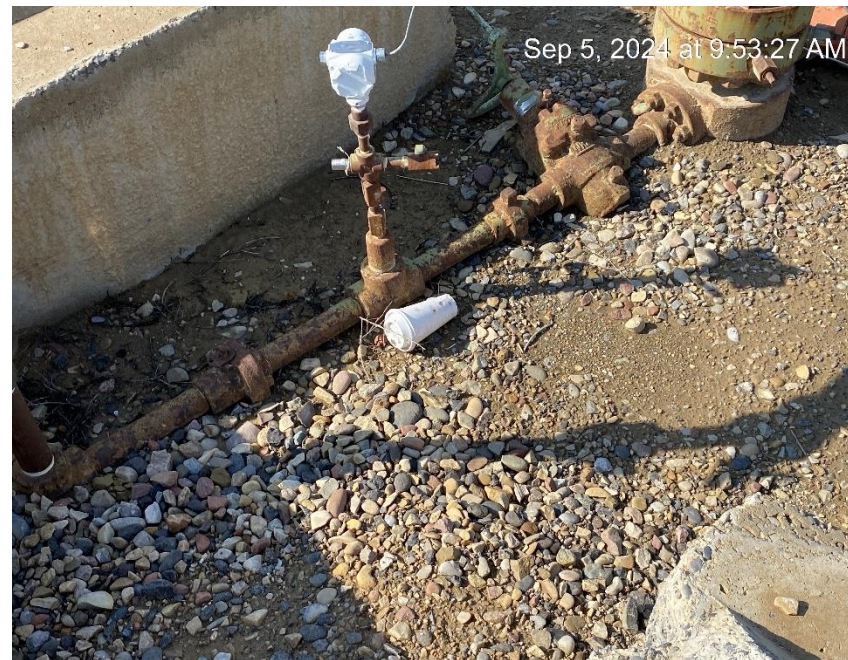


TEP Rocky Mountain LLC  
RGU 11-25-198 Pad  
Location ID: 335671



Debris



Debris



TEP Rocky Mountain LLC  
RGU 11-25-198 Pad  
Location ID: 335671



Debris



Debris



**TEP Rocky Mountain LLC**  
**RGU 11-25-198 Pad**  
**Location ID: 335671**



**Unused equipment**



**Vegetation growth inside tank berm**



TEP Rocky Mountain LLC  
RGU 11-25-198 Pad  
Location ID: 335671



**Unused equipment**



**Connected hose not in use and open on other end**

TEP Rocky Mountain LLC  
RGU 11-25-198 Pad  
Location ID: 335671



Unused hose



Open end hose from production tank



TEP Rocky Mountain LLC  
RGU 11-25-198 Pad  
Location ID: 335671



Open to wildlife. Double valved loadline.



Tanks out of service



TEP Rocky Mountain LLC  
RGU 11-25-198 Pad  
Location ID: 335671



**Double valved loadline**



**Debris**



TEP Rocky Mountain LLC  
RGU 11-25-198 Pad  
Location ID: 335671



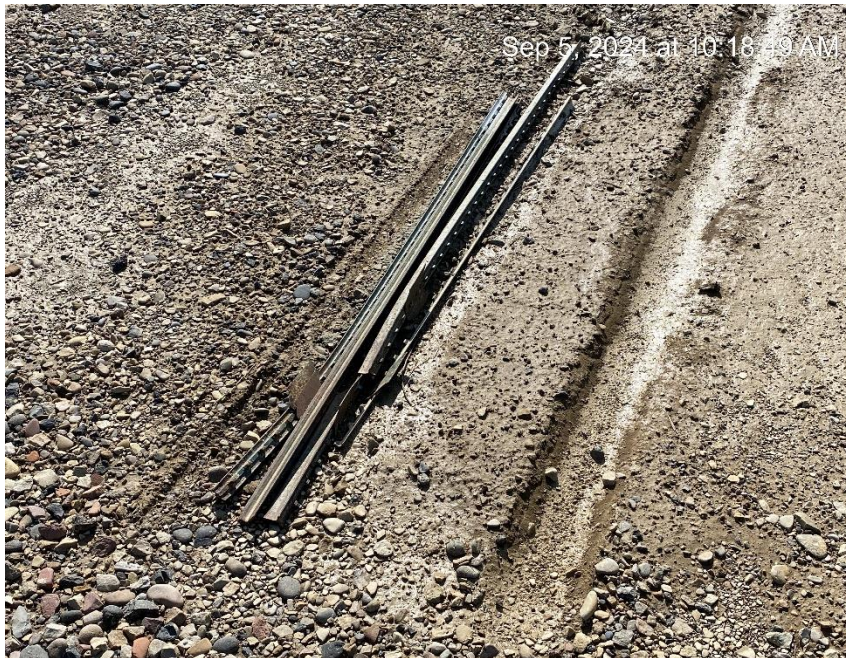
**Debris**



**Ethylene glycol tanks missing plugs**



TEP Rocky Mountain LLC  
RGU 11-25-198 Pad  
Location ID: 335671



Debris



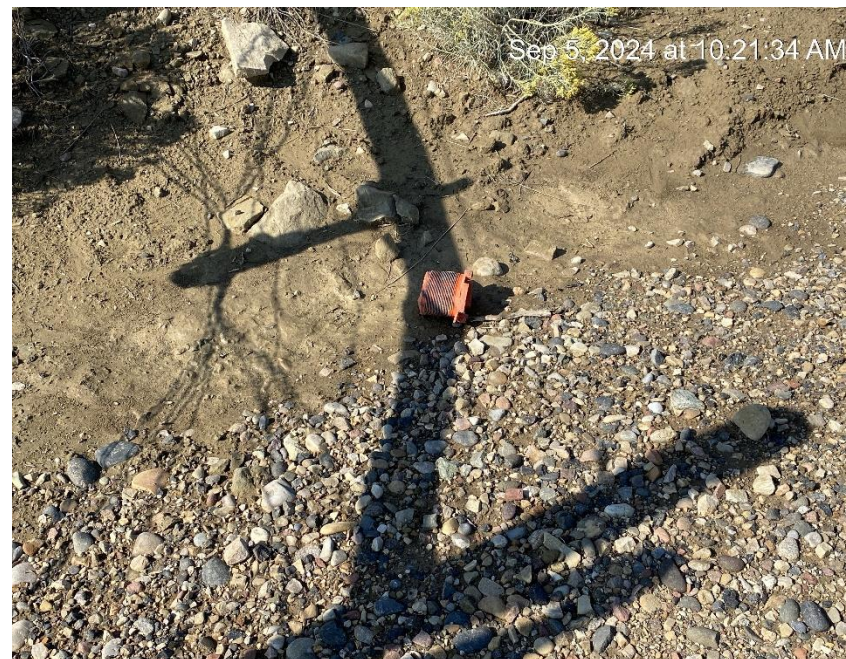
Debris



TEP Rocky Mountain LLC  
RGU 11-25-198 Pad  
Location ID: 335671



Debris



Debris



**TEP Rocky Mountain LLC  
RGU 11-25-198 Pad  
Location ID: 335671**



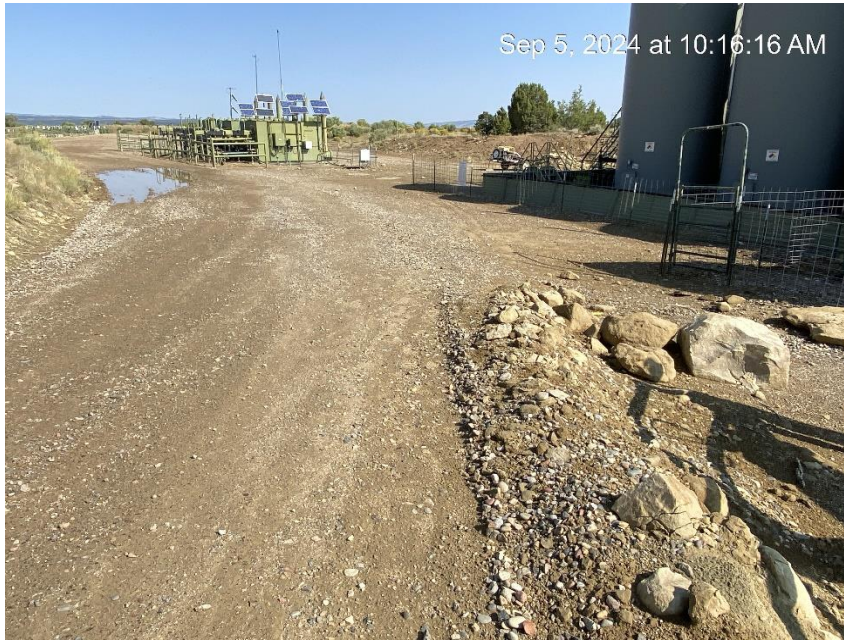
**Unplugged gas line valves with handles creating a potential release hazard**



**Production facilities from Northwest corner**



**TEP Rocky Mountain LLC  
RGU 11-25-198 Pad  
Location ID: 335671**



**Production facilities from Southwest corner and entrance**



**Well pad from Northwest corner**



**TEP Rocky Mountain LLC  
RGU 11-25-198 Pad  
Location ID: 335671**



**Well pad from Northeast corner**



**Well pad from Southwest corner and entrance**