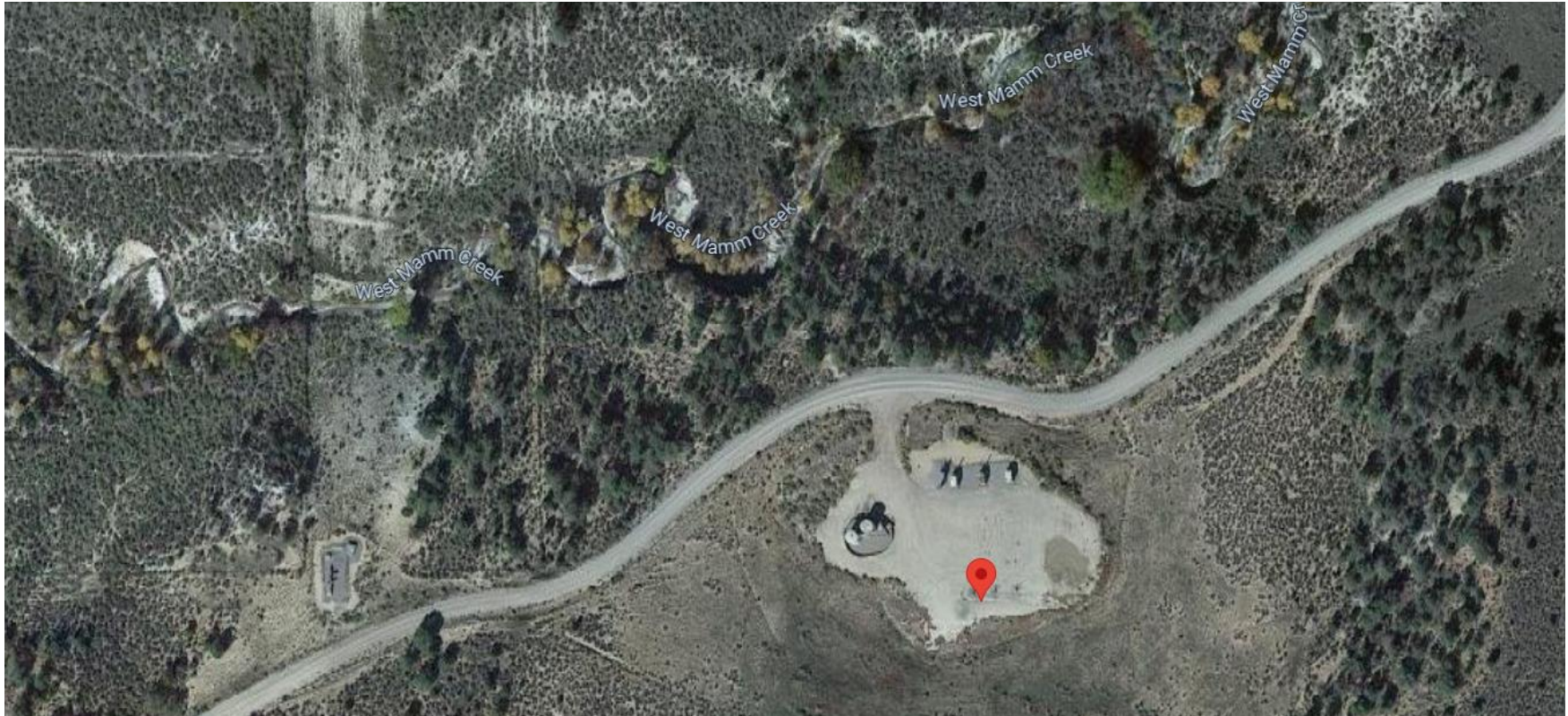


Storm Water Management and Erosion control
Location Name: CAERUS PICEANCE LLC HMR FEDERAL 18-11 (N18) Pad
Location #: 334933



**Location Overview: Location is within High
Priority/Density/NSO/Black Bear Habitat areas. Location is
approximately 63 yards from West Mamm Creek.
Section/Township/Range: 18 7S92W**



COLORADO
Energy & Carbon Management
Commission
Department of Natural Resources

Storm water Management and Erosion control
Location Name: CAERUS PICEANCE LLC HMR FEDERAL 18-11 (N18) Pad
Location #: 334933



North West corner of location.



North East corner of location.



South West corner of location.



South East corner of location.