

Inspection Photos

Location Name: TEP ROCKY MOUNTAIN LLC CB-TG Land NW 11D-20-692 Pad

Location #: 418555



Photo # 6054 From entrance to location



Photo # 6055 Location

Inspection Photos

Location Name: TEP ROCKY MOUNTAIN LLC CB-TG Land NW 11D-20-692 Pad

Location #: 418555



Photo # 6056 Location



Photo # 6057 Location

Inspection Photos

Location Name: TEP ROCKY MOUNTAIN LLC CB-TG Land NW 11D-20-692 Pad

Location #: 418555



Photo # 6058 Location



Photo # 6059 Location

Inspection Photos

Location Name: TEP ROCKY MOUNTAIN LLC CB-TG Land NW 11D-20-692 Pad

Location #: 418555



Photo # 6060 Location



Photo # 6061 Location

Inspection Photos

Location Name: TEP ROCKY MOUNTAIN LLC CB-TG Land NW 11D-20-692 Pad

Location #: 418555



Photo # 6062 Wellhead sign laying on ground & not properly Posted/does not comply with CECMC signage rules



Photo # 6063 Tank label weathered & some required info is illegible/does not comply with CECMC labeling rules

Inspection Photos

Location Name: TEP ROCKY MOUNTAIN LLC CB-TG Land NW 11D-20-692 Pad

Location #: 418555

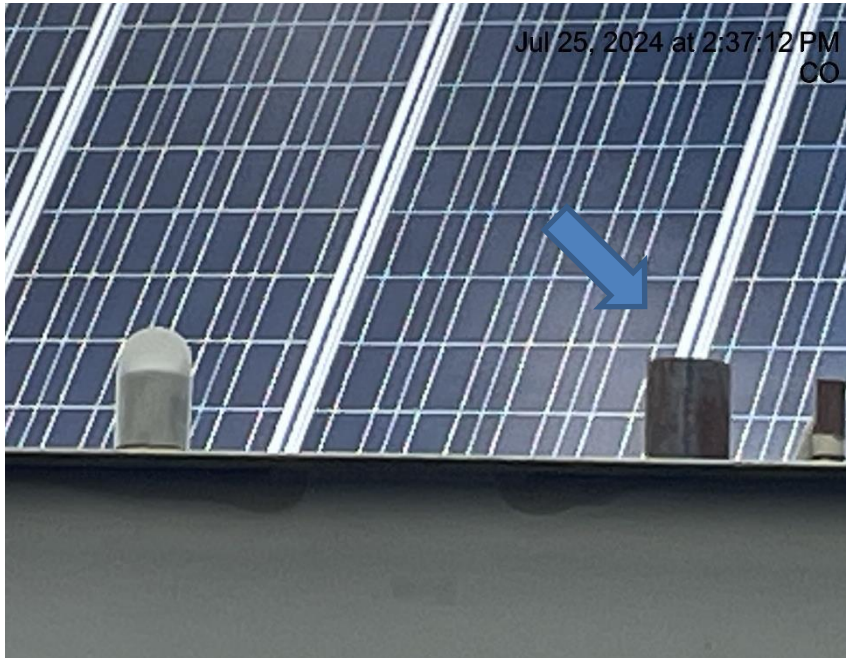


Photo # 3511 From inspection 708904231 conducted on 07/25/2024 PRV vent line on separator unit does not comply with CECMC pressure safety device rules

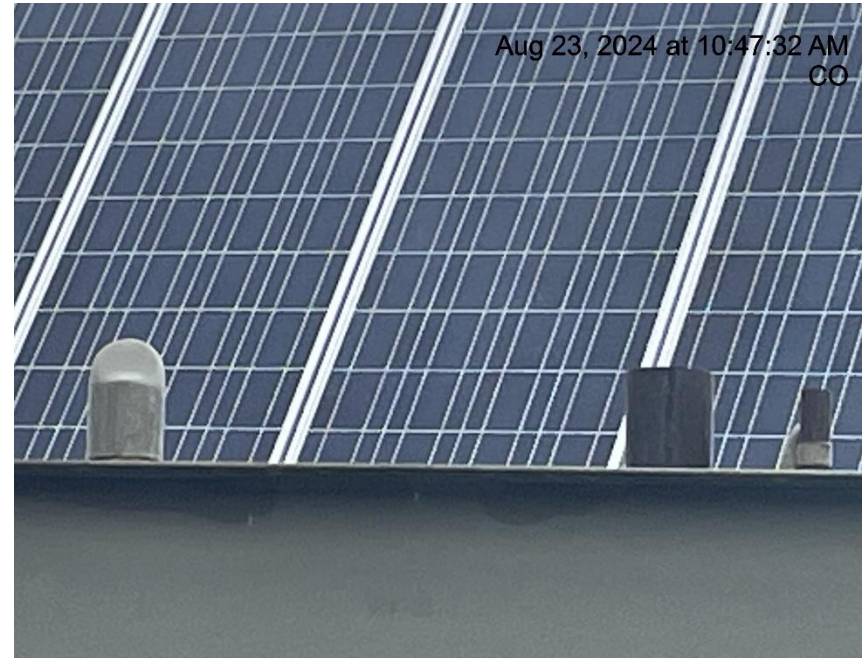


Photo # 6064 PRV vent line on separator unit does not comply with CECMC pressure safety device rules

Inspection Photos

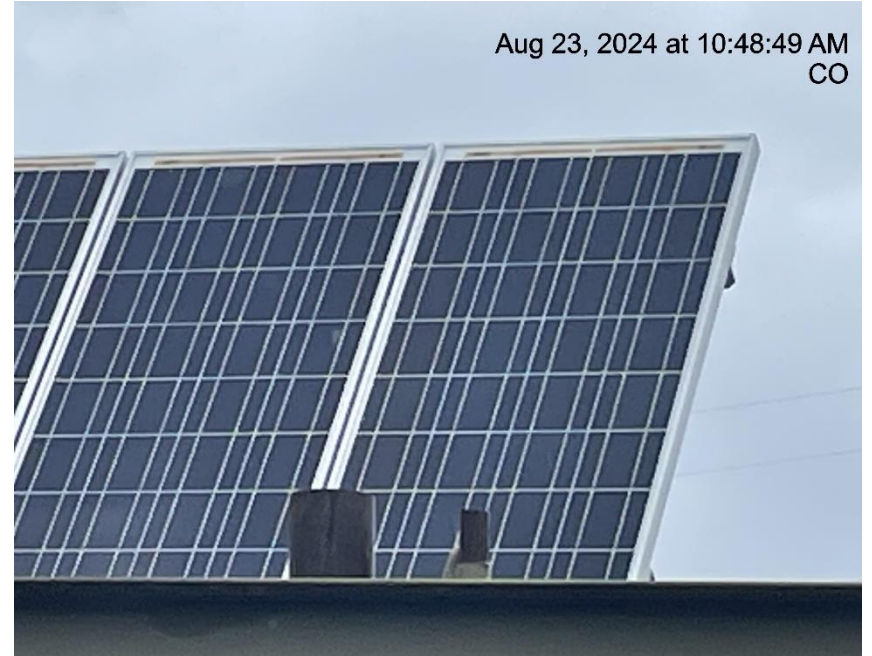
Location Name: TEP ROCKY MOUNTAIN LLC CB-TG Land NW 11D-20-692 Pad

Location #: 418555



Jul 25, 2024 at 2:36:52 PM
CO

Photo # 3512 From inspection 708904231 conducted on 07/25/2024 PRV vent line on separator unit does not comply with CECMC pressure safety device rules



Aug 23, 2024 at 10:48:49 AM
CO

Photo # 6065 PRV vent line on separator unit does not comply with CECMC pressure safety device rules