

DOCUMENT NUMBER: 699700390  
FACILITY ID: 228882  
API NUMBER: 103-05874  
FACILITY NAME: WILSON CREEK MORRISON UNIT 20

CORRECTIVE ACTION NARRATIVE FROM ECMC INSPECTION REPORT DATED 24 JULY 2023

### **CORRECTIVE ACTION #1 REPSONSE**

**Comment:** Potentially impacted material adjacent to the wellhead.

**Corrective Action:** Control and contain spills/releases and clean up per Rule 912.a.

RESPONSE TO CA 1: On 07/18/2024 Wilson Creek Well #20 wellhead was dug out by shovel to allow access to the wellhead bolts in preparation for plugging operations. On 07/30/2024 the P&A rig moved onto location to begin plugging the well. The Unit 20 plugging was completed on 8/9/2024 and cut/cap operations were completed on 8/14/24. Once the cut and cap was completed the well cellar was backfilled with excavated material. Chevron plans to excavate this Site during the 2025 field season.



This picture shows the excavated wellhead is plugged and cutoff and the well cellar is intact.





Wilson Creek 20 well is cut and capped



Wilson Creek 20 after cut and cap completion.



## CORRECTIVE ACTION #2 REPSONSE

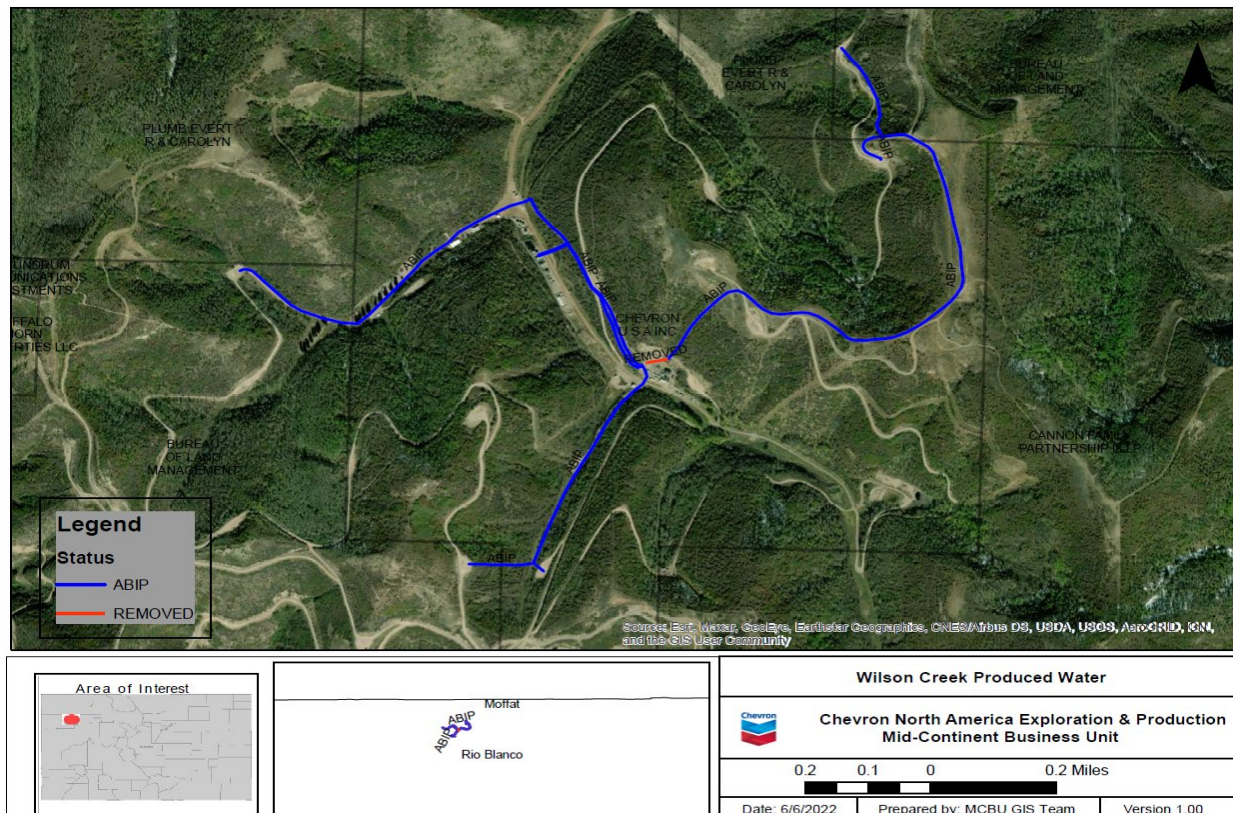
Comment: Unmarked riser adjacent to the wellhead.

Corrective Action: Complete flowline and crude oil transfer line abandonments to comply with Rule 1105

RESPONSE TO CA 2: On 20 August 2024 the Wilson Creek Well 20 flow line was cut off 225 south of the Well 20 well head at GPS coordinates 40.188391/-107.920832 at a depth of 5 feet. The line was plugged with cement and the pipe was covered with dirt. See attached pictures.

The above description of the work completed on this flow line is part of the Wilson Creek Route 1 (Produced Water Injection) approved pre-abandonment plan submitted to ECMC in June of 2022. The form 44 Doc# 403069896 submitted with the following map has been approved by ECMC.


Complete abandonment of the Wilson Creek Route 1 will accomplished before the end of the current work season at Wilson Creek.






A close-up photograph of a cylindrical cement plug embedded in a rough, cracked, light-brown soil. The plug is light gray and has a slightly textured surface.

**WILSON CREEK WELL 20  
CEMENT PLUG IN FLOWLINE**

A photograph of a deep, narrow hole in the ground. A yellow measuring tape is visible, indicating the depth. The hole is filled with dark, loose soil. A small blue object is visible on the right side of the hole.

**WILSON CREEK WELL 20 CUT  
OFF 5+ FEET UNDER GROUND,  
PLUGGED WITH CEMENT.  
FLUSHED WITH WATER,  
PURGERD AND VENTED TO AIR  
DURING OOSLAT**

A photograph of a cylindrical cement plug lying on the ground. A person's foot, wearing a brown boot and blue jeans, is visible in the bottom right corner, providing a sense of scale. The ground is dry, cracked, and light-brown.

**WILSON CREEK WELL WO  
CUT OFF AND PLUGGED WITH  
CEMENT IN ACCORDANCE TO  
RULE 1105**