

CRESTONE PEAK RESOURCES

**ADAMS COUNTY
SEC 28-T3S-R65W
KING 3-65 28-29 2BH**

OWB

Design: FINAL SURVEY

Standard Survey Report

30 May, 2024

Project: ADAMS COUNTY
Site: SEC 28-T3S-R65W
Well: KING 3-65 28-29 2BH
Wellbore: OWB
Design: FINAL SURVEY

PROJECT DETAILS: ADAMS COUNTY
Geodetic System: US State Plane 1983
Datum: North American Datum 1983
Ellipsoid: GRS 1980
Zone: Colorado Northern Zone
System Datum: Mean Sea Level



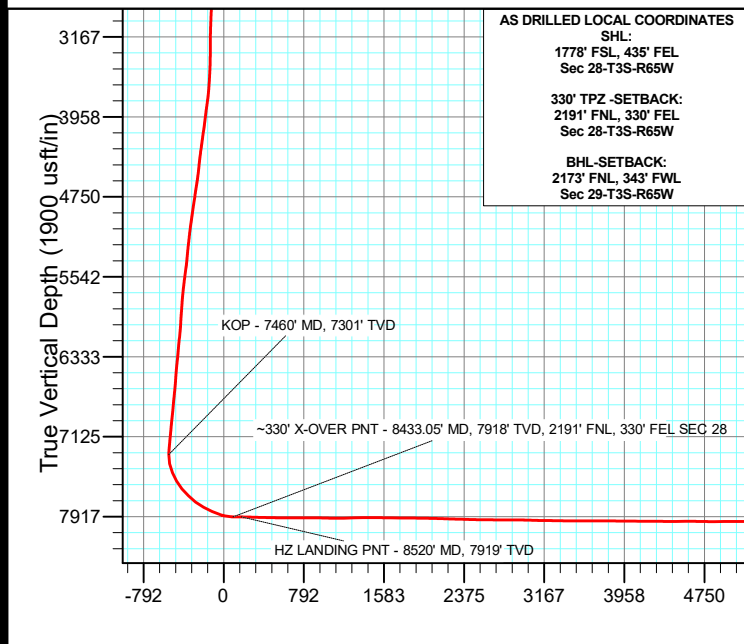
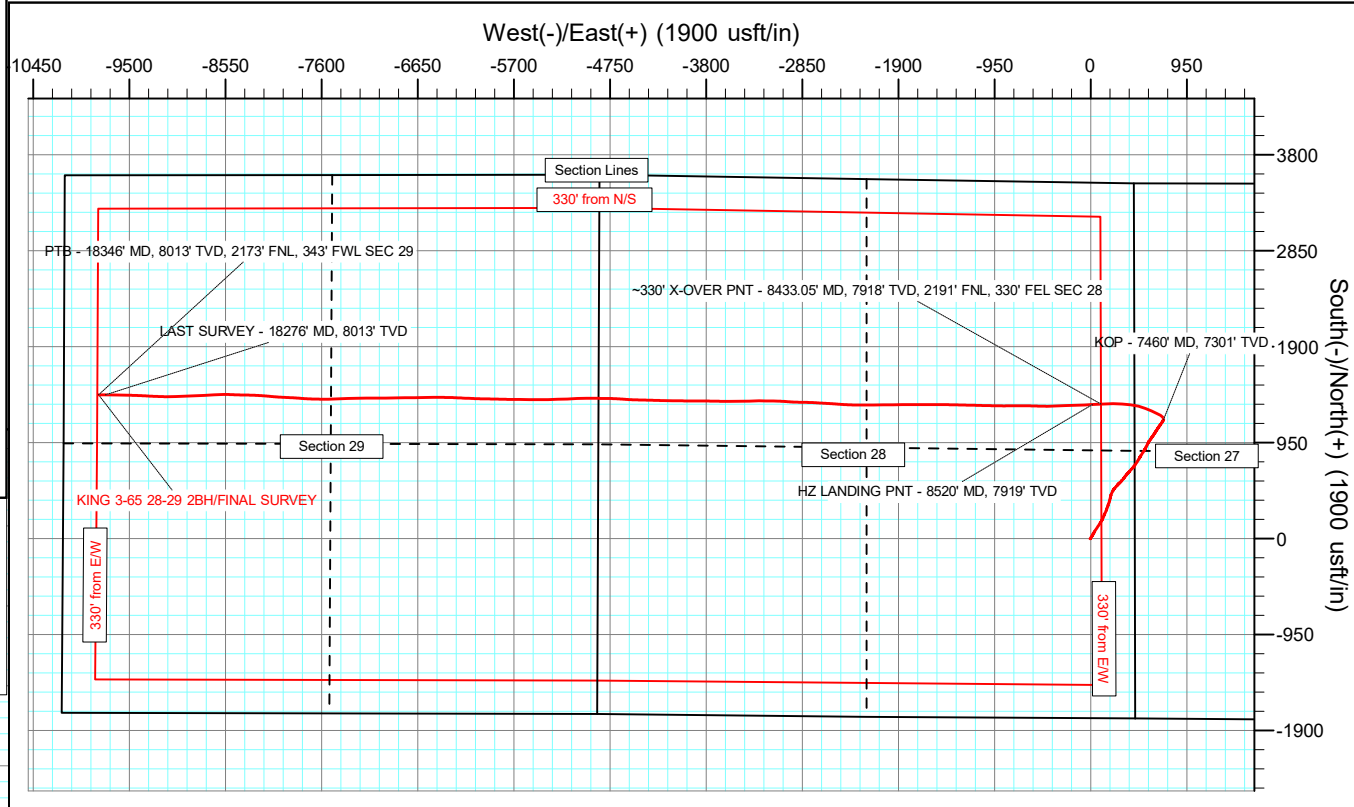
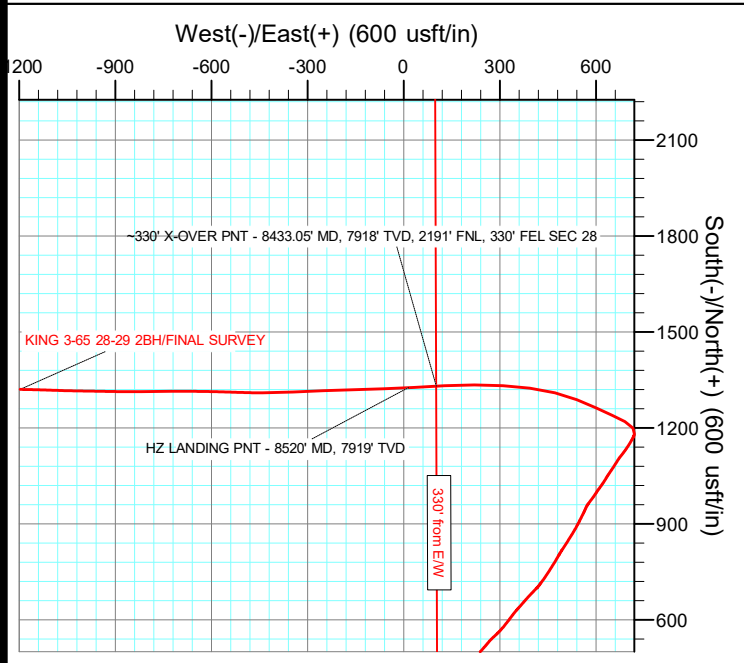
Azimuths to True North
Magnetic North: 7.43°
Magnetic Field
Strength: 51313.7nT
Dip Angle: 66.04°
Date: 5/18/2024
Model: IGRF2020

WELL DETAILS: KING 3-65 28-29 2BH

+N/-S	+E/-W	Northing	Easting	5585.00	Latitude	Longitude	Slot
0.00	0.00	1156311.53	3235875.78		39.759379°N	104.660996°W	

ANNOTATIONS

MD	Inc	Azi	TVD	+N/-S	+E/-W	Vsect	Departure	Annotation
7460.00	10.90	21.12	7301.19	1179.66	720.16	-543.27	1411.24	KOP - 7460' MD, 7301' TVD
8433.05	87.90	267.02	7918.18	1330.44	101.49	90.64	2076.22	~330' X-OVER PNT - 8433.05' MD, 7918' TVD, 2191' FNL, 330' FEL SEC 28
8520.00	89.76	266.96	7919.37	1325.72	14.68	175.87	2163.13	HZ LANDING PNT - 8520' MD, 7919' TVD
18276.00	89.75	270.86	8012.58	1421.84	-9734.49	9837.78	11917.77	LAST SURVEY - 18276' MD, 8013' TVD
18346.00	89.75	270.86	8012.89	1422.89	-9804.48	9907.20	11987.77	PTB - 18346' MD, 8013' TVD, 2173' FNL, 343' FWL SEC 29



Civitas Resources

Survey Report

Company:	CRESTONE PEAK RESOURCES	Local Co-ordinate Reference:	Well KING 3-65 28-29 2BH
Project:	ADAMS COUNTY	TVD Reference:	KB 25' @ 5610.00usft
Site:	SEC 28-T3S-R65W	MD Reference:	KB 25' @ 5610.00usft
Well:	KING 3-65 28-29 2BH	North Reference:	True
Wellbore:	OWB	Survey Calculation Method:	Minimum Curvature
Design:	FINAL SURVEY	Database:	EDM

Project	ADAMS COUNTY		
Map System:	US State Plane 1983	System Datum:	Mean Sea Level
Geo Datum:	North American Datum 1983		
Map Zone:	Colorado Northern Zone		Using geodetic scale factor

Site	SEC 28-T3S-R65W		
Site Position:		Northing:	1,154,535.24 usft
From:	Lat/Long	Easting:	3,236,332.63 usft
Position Uncertainty:	0.00 usft	Slot Radius:	13.200 in
		Latitude:	39.754491°N
		Longitude:	104.659431°W
		Grid Convergence:	0.54 °

Well	KING 3-65 28-29 2BH		
Well Position	+N/-S	0.00 usft	Northing:
	+E/-W	0.00 usft	Easting:
Position Uncertainty	0.00 usft	Wellhead Elevation:	usft
		Latitude:	39.759379°N
		Longitude:	104.660996°W
		Ground Level:	5,585.00 usft

Wellbore	OWB		
Magnetics	Model Name	Sample Date	Declination (°)
	IGRF2020	5/18/2024	7.43
			Dip Angle (°)
			66.04
			Field Strength (nT)
			51,313.71300559

Design	FINAL SURVEY		
Audit Notes:			
Version:	1.0	Phase:	ACTUAL
		Tie On Depth:	0.00
Vertical Section:	Depth From (TVD) (usft)	+N/-S (usft)	+E/-W (usft)
	0.00	0.00	0.00
			Direction (°)
			278.26

Survey Program	Date	5/30/2024		
From (usft)	To (usft)	Survey (Wellbore)	Tool Name	Description
209.00	3,224.00	SURFACE SURVEY (OWB)	MWD OWSG	OWSG MWD - Standard
3,386.00	18,346.00	FINAL SURVEY (OWB)	MWD OWSG	OWSG MWD - Standard

Survey										
Measured Depth (usft)	Inclination (°)	Azimuth (°)	Vertical Depth (usft)	+N/-S (usft)	+E/-W (usft)	Vertical Section (usft)	Dogleg Rate (°/100ft)	Build Rate (°/100ft)	Turn Rate (°/100ft)	
0.00	0.00	0.00	0.00	0.00	0.00	0.00	0.00	0.00	0.00	
209.00	0.75	233.27	208.99	-0.82	-1.10	0.97	0.36	0.36	0.00	
300.00	0.88	242.57	299.98	-1.50	-2.19	1.96	0.20	0.14	10.22	
390.00	0.80	253.59	389.98	-1.99	-3.41	3.09	0.20	-0.09	12.24	
480.00	1.06	248.35	479.96	-2.48	-4.79	4.38	0.30	0.29	-5.82	
574.00	1.33	242.13	573.94	-3.31	-6.56	6.02	0.32	0.29	-6.62	
668.00	1.33	46.12	667.93	-3.06	-6.74	6.23	2.80	0.00	174.46	
762.00	1.72	51.28	761.90	-1.42	-4.85	4.60	0.44	0.41	5.49	
857.00	2.52	20.96	856.84	1.42	-2.99	3.16	1.42	0.84	-31.92	
951.00	2.83	35.24	950.74	5.24	-0.91	1.66	0.78	0.33	15.19	

Civitas Resources

Survey Report

Company:	CRESTONE PEAK RESOURCES	Local Co-ordinate Reference:	Well KING 3-65 28-29 2BH
Project:	ADAMS COUNTY	TVD Reference:	KB 25' @ 5610.00usft
Site:	SEC 28-T3S-R65W	MD Reference:	KB 25' @ 5610.00usft
Well:	KING 3-65 28-29 2BH	North Reference:	True
Wellbore:	OWB	Survey Calculation Method:	Minimum Curvature
Design:	FINAL SURVEY	Database:	EDM

Survey									
Measured Depth (usft)	Inclination (°)	Azimuth (°)	Vertical Depth (usft)	+N/-S (usft)	+E/-W (usft)	Vertical Section (usft)	Dogleg Rate (°/100ft)	Build Rate (°/100ft)	Turn Rate (°/100ft)
1,045.00	4.42	35.19	1,044.55	10.10	2.51	-1.04	1.69	1.69	-0.05
1,141.00	4.60	34.05	1,140.25	16.31	6.80	-4.39	0.21	0.19	-1.19
1,236.00	4.60	36.51	1,234.94	22.53	11.20	-7.85	0.21	0.00	2.59
1,331.00	5.61	31.53	1,329.56	29.55	15.90	-11.49	1.16	1.06	-5.24
1,426.00	6.94	26.82	1,423.99	38.63	20.91	-15.15	1.50	1.40	-4.96
1,520.00	10.52	29.86	1,516.89	51.15	27.75	-20.12	3.84	3.81	3.23
1,615.00	12.90	30.92	1,609.91	67.77	37.52	-27.40	2.52	2.51	1.12
1,710.00	12.59	33.12	1,702.57	85.54	48.63	-35.84	0.61	-0.33	2.32
1,805.00	13.88	33.16	1,795.04	103.75	60.52	-44.99	1.36	1.36	0.04
1,900.00	14.36	34.44	1,887.17	123.00	73.41	-54.98	0.60	0.51	1.35
1,994.00	14.80	33.78	1,978.14	142.59	86.68	-65.30	0.50	0.47	-0.70
2,089.00	13.04	32.19	2,070.35	161.75	99.14	-74.88	1.90	-1.85	-1.67
2,184.00	13.92	27.88	2,162.73	180.92	110.19	-83.06	1.41	0.93	-4.54
2,279.00	12.64	23.65	2,255.19	200.55	119.70	-89.66	1.69	-1.35	-4.45
2,372.00	11.09	21.71	2,346.20	218.18	127.09	-94.44	1.72	-1.67	-2.09
2,466.00	12.28	24.35	2,438.26	235.69	134.56	-99.32	1.39	1.27	2.81
2,560.00	13.35	23.65	2,529.91	254.73	143.04	-104.97	1.15	1.14	-0.74
2,655.00	13.26	22.81	2,622.36	274.82	151.66	-110.62	0.22	-0.09	-0.88
2,750.00	12.46	18.75	2,714.98	294.57	159.18	-115.22	1.27	-0.84	-4.27
2,845.00	11.75	19.37	2,807.87	313.40	165.68	-118.95	0.76	-0.75	0.65
2,940.00	13.35	20.25	2,900.60	332.82	172.68	-123.09	1.70	1.68	0.93
3,035.00	13.04	17.87	2,993.09	353.31	179.77	-127.16	0.66	-0.33	-2.51
3,129.00	12.02	16.60	3,084.85	372.78	185.82	-130.35	1.12	-1.09	-1.35
3,224.00	9.59	12.54	3,178.16	389.99	190.36	-132.38	2.68	-2.56	-4.27
3,346.00	6.99	10.18	3,298.87	407.22	193.88	-133.39	2.15	-2.13	-1.94
SURFACE CSG - 3346' MD, 3299' TVD									
3,386.00	6.14	8.97	3,338.61	411.73	194.65	-133.50	2.15	-2.12	-3.02
3,481.00	9.81	17.70	3,432.68	424.46	197.90	-134.89	4.06	3.86	9.19
3,577.00	12.51	22.98	3,526.86	441.83	204.45	-138.87	3.00	2.81	5.50
3,671.00	12.11	23.73	3,618.70	460.23	212.39	-144.09	0.46	-0.43	0.80
3,765.00	12.42	31.71	3,710.56	477.85	221.67	-150.74	1.83	0.33	8.49
3,859.00	14.63	41.40	3,801.96	495.36	234.84	-161.26	3.36	2.35	10.31
3,953.00	13.70	41.23	3,893.10	512.64	250.03	-173.81	0.99	-0.99	-0.18
4,048.00	12.02	39.55	3,985.71	528.73	263.74	-185.07	1.81	-1.77	-1.77
4,143.00	13.70	46.83	4,078.33	544.05	278.25	-197.22	2.45	1.77	7.66
4,237.00	12.11	46.16	4,169.96	558.50	293.48	-210.22	1.70	-1.69	-0.71
4,331.00	14.72	40.08	4,261.39	574.47	308.28	-222.58	3.15	2.78	-6.47
4,426.00	14.10	38.19	4,353.40	592.80	323.21	-234.72	0.82	-0.65	-1.99
4,521.00	12.06	35.76	4,445.93	609.95	336.16	-245.08	2.22	-2.15	-2.56
4,615.00	13.21	40.22	4,537.65	626.12	348.84	-255.30	1.60	1.22	4.74
4,710.00	16.48	41.71	4,629.47	644.48	364.82	-268.48	3.47	3.44	1.57
4,804.00	14.63	40.92	4,720.02	663.40	381.47	-282.23	1.98	-1.97	-0.84
4,900.00	14.89	43.83	4,812.86	681.46	397.95	-295.95	0.82	0.27	3.03

Civitas Resources

Survey Report

Company:	CRESTONE PEAK RESOURCES	Local Co-ordinate Reference:	Well KING 3-65 28-29 2BH
Project:	ADAMS COUNTY	TVD Reference:	KB 25' @ 5610.00usft
Site:	SEC 28-T3S-R65W	MD Reference:	KB 25' @ 5610.00usft
Well:	KING 3-65 28-29 2BH	North Reference:	True
Wellbore:	OWB	Survey Calculation Method:	Minimum Curvature
Design:	FINAL SURVEY	Database:	EDM

Survey										
Measured Depth (usft)	Inclination (°)	Azimuth (°)	Vertical Depth (usft)	+N/-S (usft)	+E/-W (usft)	Vertical Section (usft)	Dogleg Rate (°/100ft)	Build Rate (°/100ft)	Turn Rate (°/100ft)	
4,995.00	13.21	44.09	4,905.01	698.06	413.96	-309.41	1.77	-1.77	0.27	
5,089.00	17.06	36.20	4,995.74	716.91	429.58	-322.16	4.64	4.10	-8.39	
5,184.00	15.95	33.47	5,086.83	739.05	445.01	-334.25	1.43	-1.17	-2.87	
5,373.00	14.49	31.27	5,269.20	780.92	471.61	-354.56	0.83	-0.77	-1.16	
5,468.00	13.26	29.90	5,361.42	800.53	483.21	-363.22	1.34	-1.29	-1.44	
5,562.00	17.63	32.59	5,452.01	821.88	496.25	-373.07	4.71	4.65	2.86	
5,657.00	17.76	33.08	5,542.51	846.14	511.91	-385.08	0.21	0.14	0.52	
5,752.00	16.48	31.36	5,633.30	869.79	526.83	-396.45	1.45	-1.35	-1.81	
5,847.00	14.76	28.89	5,724.79	891.89	539.69	-406.00	1.94	-1.81	-2.60	
5,942.00	12.33	26.07	5,817.14	911.60	550.00	-413.37	2.65	-2.56	-2.97	
6,037.00	13.43	26.99	5,909.75	930.54	559.46	-420.02	1.18	1.16	0.97	
6,131.00	10.96	22.63	6,001.63	948.52	567.86	-425.74	2.80	-2.63	-4.64	
6,225.00	12.33	36.78	6,093.71	964.81	577.31	-432.75	3.36	1.46	15.05	
6,320.00	11.98	37.48	6,186.58	980.76	589.38	-442.41	0.40	-0.37	0.74	
6,414.00	10.91	31.71	6,278.71	996.07	599.99	-450.72	1.67	-1.14	-6.14	
6,509.00	13.30	36.95	6,371.59	1,012.45	611.29	-459.54	2.77	2.52	5.52	
6,605.00	11.18	33.43	6,465.41	1,029.05	623.06	-468.80	2.34	-2.21	-3.67	
6,699.00	9.68	30.43	6,557.85	1,043.47	632.08	-475.66	1.70	-1.60	-3.19	
6,793.00	12.06	34.62	6,650.16	1,058.36	641.66	-483.01	2.67	2.53	4.46	
6,888.00	13.79	33.34	6,742.75	1,075.99	653.52	-492.21	1.85	1.82	-1.35	
6,983.00	12.02	31.31	6,835.35	1,093.90	664.89	-500.89	1.92	-1.86	-2.14	
7,078.00	12.77	37.79	6,928.14	1,110.65	676.46	-509.94	1.66	0.79	6.82	
7,173.00	10.74	37.13	7,021.14	1,126.01	688.24	-519.39	2.14	-2.14	-0.69	
7,268.00	12.64	33.08	7,114.17	1,141.78	699.26	-528.03	2.18	2.00	-4.26	
7,363.00	14.36	29.77	7,206.54	1,160.72	710.78	-536.71	1.98	1.81	-3.48	
7,459.00	10.91	21.93	7,300.21	1,179.48	720.09	-543.23	4.01	-3.59	-8.17	
7,460.00	10.90	21.12	7,301.19	1,179.66	720.16	-543.27	15.33	-1.22	-80.78	
KOP - 7460' MD, 7301' TVD										
7,553.00	17.23	325.11	7,391.73	1,199.26	715.42	-535.77	15.33	6.81	-60.23	
7,649.00	23.51	297.66	7,481.89	1,219.88	690.25	-507.89	11.75	6.54	-28.59	
7,742.00	31.95	294.97	7,564.13	1,238.91	651.44	-466.76	9.17	9.08	-2.89	
7,837.00	40.43	294.97	7,640.73	1,262.57	600.64	-413.08	8.93	8.93	0.00	
7,932.00	46.44	291.36	7,709.70	1,288.14	540.59	-349.98	6.84	6.33	-3.80	
8,027.00	52.32	283.69	7,771.57	1,309.61	471.89	-278.91	8.70	6.19	-8.07	
8,122.00	60.89	277.74	7,823.85	1,324.13	394.05	-199.79	10.42	9.02	-6.26	
8,216.00	66.64	273.11	7,865.40	1,332.01	310.17	-115.65	7.54	6.12	-4.93	
8,312.00	71.68	269.85	7,899.55	1,334.29	220.52	-26.60	6.13	5.25	-3.40	
8,407.00	87.05	267.12	7,917.03	1,331.77	127.48	65.11	16.42	16.18	-2.87	
8,433.05	87.90	267.02	7,918.18	1,330.44	101.49	90.64	3.28	3.26	-0.37	
-330' X-OVER PNT - 8433.05' MD, 7918' TVD, 2191' FNL, 330' FEL SEC 28										
8,502.00	90.15	266.77	7,919.35	1,326.71	32.65	158.23	3.28	3.26	-0.37	
8,520.00	89.76	266.96	7,919.37	1,325.72	14.68	175.87	2.43	-2.19	1.06	
HZ LANDING PNT - 8520' MD, 7919' TVD										
8,597.00	88.07	267.78	7,920.83	1,322.19	-62.22	251.47	2.43	-2.19	1.06	

Civitas Resources

Survey Report

Company:	CRESTONE PEAK RESOURCES	Local Co-ordinate Reference:	Well KING 3-65 28-29 2BH
Project:	ADAMS COUNTY	TVD Reference:	KB 25' @ 5610.00usft
Site:	SEC 28-T3S-R65W	MD Reference:	KB 25' @ 5610.00usft
Well:	KING 3-65 28-29 2BH	North Reference:	True
Wellbore:	OWB	Survey Calculation Method:	Minimum Curvature
Design:	FINAL SURVEY	Database:	EDM

Survey										
Measured Depth (usft)	Inclination (°)	Azimuth (°)	Vertical Depth (usft)	+N/-S (usft)	+E/-W (usft)	Vertical Section (usft)	Dogleg Rate (°/100ft)	Build Rate (°/100ft)	Turn Rate (°/100ft)	
8,786.00	89.00	268.75	7,925.66	1,316.47	-251.07	437.54	0.71	0.49	0.51	
8,881.00	88.60	266.10	7,927.65	1,312.21	-345.94	530.82	2.82	-0.42	-2.79	
8,975.00	89.97	270.60	7,928.82	1,309.50	-439.87	623.38	5.00	1.46	4.79	
9,071.00	90.81	271.97	7,928.17	1,311.65	-535.84	718.67	1.67	0.87	1.43	
9,165.00	90.10	270.86	7,927.42	1,313.97	-629.81	811.99	1.40	-0.76	-1.18	
9,259.00	89.22	269.72	7,927.98	1,314.45	-723.80	905.08	1.53	-0.94	-1.21	
9,354.00	88.42	269.19	7,929.94	1,313.55	-818.78	998.94	1.01	-0.84	-0.56	
9,449.00	88.91	271.17	7,932.15	1,313.84	-913.75	1,092.97	2.15	0.52	2.08	
9,543.00	92.22	270.86	7,931.22	1,315.51	-1,007.71	1,186.20	3.54	3.52	-0.33	
9,638.00	92.58	272.10	7,927.25	1,317.96	-1,102.60	1,280.45	1.36	0.38	1.31	
9,732.00	89.57	270.78	7,925.48	1,320.32	-1,196.54	1,373.76	3.50	-3.20	-1.40	
9,826.00	89.70	271.57	7,926.08	1,322.25	-1,290.51	1,467.04	0.85	0.14	0.84	
9,921.00	89.09	271.08	7,927.09	1,324.45	-1,385.48	1,561.34	0.82	-0.64	-0.52	
10,015.00	89.40	270.29	7,928.32	1,325.57	-1,479.47	1,654.51	0.90	0.33	-0.84	
10,111.00	89.35	270.33	7,929.37	1,326.09	-1,575.46	1,749.58	0.07	-0.05	0.04	
10,206.00	89.57	270.07	7,930.27	1,326.42	-1,670.45	1,843.64	0.36	0.23	-0.27	
10,300.00	89.31	269.89	7,931.18	1,326.39	-1,764.45	1,936.66	0.34	-0.28	-0.19	
10,395.00	88.69	268.48	7,932.84	1,325.04	-1,859.42	2,030.45	1.62	-0.65	-1.48	
10,490.00	88.56	269.89	7,935.12	1,323.69	-1,954.38	2,124.23	1.49	-0.14	1.48	
10,585.00	87.72	269.28	7,938.21	1,323.00	-2,049.33	2,218.10	1.09	-0.88	-0.64	
10,680.00	88.78	269.72	7,941.11	1,322.17	-2,144.28	2,311.94	1.21	1.12	0.46	
10,775.00	88.07	269.50	7,943.72	1,321.52	-2,239.24	2,405.83	0.78	-0.75	-0.23	
10,964.00	89.79	273.07	7,947.25	1,325.76	-2,428.12	2,593.36	2.10	0.91	1.89	
11,058.00	88.64	274.61	7,948.54	1,332.06	-2,521.90	2,687.07	2.04	-1.22	1.64	
11,153.00	90.19	272.76	7,949.51	1,338.16	-2,616.69	2,781.75	2.54	1.63	-1.95	
11,246.00	90.41	273.99	7,949.02	1,343.64	-2,709.53	2,874.41	1.34	0.24	1.32	
11,340.00	88.47	270.86	7,949.94	1,347.61	-2,803.42	2,967.90	3.92	-2.06	-3.33	
11,436.00	88.29	271.35	7,952.65	1,349.46	-2,899.37	3,063.12	0.54	-0.19	0.51	
11,530.00	89.44	274.96	7,954.52	1,354.64	-2,993.19	3,156.71	4.03	1.22	3.84	
11,626.00	89.04	271.30	7,955.79	1,359.88	-3,089.02	3,252.30	3.83	-0.42	-3.81	
11,720.00	89.00	271.44	7,957.40	1,362.12	-3,182.98	3,345.61	0.15	-0.04	0.15	
11,815.00	89.66	269.28	7,958.51	1,362.72	-3,277.96	3,439.70	2.38	0.69	-2.27	
11,910.00	90.01	267.47	7,958.78	1,360.03	-3,372.92	3,533.28	1.94	0.37	-1.91	
12,099.00	89.93	270.95	7,958.88	1,357.42	-3,561.87	3,719.90	1.84	-0.04	1.84	
12,193.00	89.84	270.64	7,959.07	1,358.72	-3,655.86	3,813.11	0.34	-0.10	-0.33	
12,288.00	89.40	271.44	7,959.70	1,360.45	-3,750.85	3,907.35	0.96	-0.46	0.84	
12,383.00	89.48	270.07	7,960.63	1,361.70	-3,845.83	4,001.53	1.44	0.08	-1.44	
12,477.00	89.62	270.29	7,961.37	1,362.00	-3,939.83	4,094.59	0.28	0.15	0.23	
12,572.00	89.75	270.73	7,961.89	1,362.84	-4,034.82	4,188.73	0.48	0.14	0.46	
12,667.00	89.57	270.95	7,962.45	1,364.23	-4,129.81	4,282.93	0.30	-0.19	0.23	
12,761.00	88.73	270.95	7,963.85	1,365.79	-4,223.79	4,376.15	0.89	-0.89	0.00	
12,856.00	90.81	271.83	7,964.23	1,368.10	-4,318.75	4,470.47	2.38	2.19	0.93	
12,950.00	90.50	271.26	7,963.15	1,370.63	-4,412.71	4,563.81	0.69	-0.33	-0.61	

Civitas Resources

Survey Report

Company:	CRESTONE PEAK RESOURCES	Local Co-ordinate Reference:	Well KING 3-65 28-29 2BH
Project:	ADAMS COUNTY	TVD Reference:	KB 25' @ 5610.00usft
Site:	SEC 28-T3S-R65W	MD Reference:	KB 25' @ 5610.00usft
Well:	KING 3-65 28-29 2BH	North Reference:	True
Wellbore:	OWB	Survey Calculation Method:	Minimum Curvature
Design:	FINAL SURVEY	Database:	EDM

Survey										
Measured Depth (usft)	Inclination (°)	Azimuth (°)	Vertical Depth (usft)	+N/-S (usft)	+E/-W (usft)	Vertical Section (usft)	Dogleg Rate (°/100ft)	Build Rate (°/100ft)	Turn Rate (°/100ft)	
13,045.00	89.53	271.79	7,963.13	1,373.16	-4,507.68	4,658.16	1.16	-1.02	0.56	
13,140.00	88.69	274.39	7,964.60	1,378.28	-4,602.52	4,752.75	2.88	-0.88	2.74	
13,235.00	90.28	272.89	7,965.46	1,384.31	-4,697.32	4,847.43	2.30	1.67	-1.58	
13,329.00	90.19	270.07	7,965.07	1,386.74	-4,791.27	4,940.77	3.00	-0.10	-3.00	
13,424.00	90.19	271.61	7,964.76	1,388.13	-4,886.26	5,034.97	1.62	0.00	1.62	
13,519.00	89.97	268.79	7,964.62	1,388.46	-4,981.25	5,129.02	2.98	-0.23	-2.97	
13,614.00	89.93	267.82	7,964.71	1,385.65	-5,076.21	5,222.59	1.02	-0.04	-1.02	
13,709.00	89.93	267.34	7,964.82	1,381.64	-5,171.12	5,315.94	0.51	0.00	-0.51	
13,804.00	89.79	268.97	7,965.06	1,378.58	-5,266.07	5,409.47	1.72	-0.15	1.72	
13,899.00	89.31	267.38	7,965.80	1,375.56	-5,361.01	5,503.00	1.75	-0.51	-1.67	
13,994.00	89.62	271.48	7,966.69	1,374.61	-5,455.99	5,596.85	4.33	0.33	4.32	
14,089.00	89.31	270.16	7,967.58	1,375.97	-5,550.97	5,691.04	1.43	-0.33	-1.39	
14,182.00	89.62	270.07	7,968.44	1,376.16	-5,643.97	5,783.10	0.35	0.33	-0.10	
14,277.00	89.13	271.17	7,969.48	1,377.19	-5,738.95	5,877.25	1.27	-0.52	1.16	
14,372.00	89.70	271.57	7,970.45	1,379.46	-5,833.92	5,971.56	0.73	0.60	0.42	
14,465.00	89.31	270.95	7,971.25	1,381.50	-5,926.89	6,063.86	0.79	-0.42	-0.67	
14,559.00	88.78	271.17	7,972.82	1,383.24	-6,020.86	6,157.11	0.61	-0.56	0.23	
14,653.00	89.00	272.58	7,974.64	1,386.32	-6,114.79	6,250.50	1.52	0.23	1.50	
14,748.00	88.91	272.85	7,976.37	1,390.81	-6,209.67	6,345.04	0.30	-0.09	0.28	
14,843.00	88.42	272.23	7,978.59	1,395.02	-6,304.55	6,439.54	0.83	-0.52	-0.65	
14,938.00	87.72	270.11	7,981.79	1,396.96	-6,399.47	6,533.76	2.35	-0.74	-2.23	
15,032.00	87.23	269.98	7,985.93	1,397.04	-6,493.38	6,626.71	0.54	-0.52	-0.14	
15,127.00	89.31	268.40	7,988.80	1,395.69	-6,588.32	6,720.47	2.75	2.19	-1.66	
15,221.00	89.09	269.72	7,990.11	1,394.15	-6,682.29	6,813.25	1.42	-0.23	1.40	
15,316.00	88.56	269.67	7,992.06	1,393.65	-6,777.27	6,907.17	0.56	-0.56	-0.05	
15,411.00	88.64	268.44	7,994.38	1,392.08	-6,872.23	7,000.92	1.30	0.08	-1.29	
15,505.00	88.25	269.59	7,996.93	1,390.46	-6,966.18	7,093.66	1.29	-0.41	1.22	
15,600.00	90.81	270.07	7,997.71	1,390.18	-7,061.17	7,187.62	2.74	2.69	0.51	
15,695.00	90.06	269.15	7,996.99	1,389.54	-7,156.16	7,281.54	1.25	-0.79	-0.97	
15,790.00	89.75	270.11	7,997.15	1,388.92	-7,251.16	7,375.46	1.06	-0.33	1.01	
15,884.00	89.40	267.60	7,997.84	1,387.04	-7,345.13	7,468.19	2.70	-0.37	-2.67	
15,978.00	89.57	266.68	7,998.69	1,382.35	-7,439.01	7,560.42	1.00	0.18	-0.98	
16,073.00	89.53	269.85	7,999.43	1,379.48	-7,533.95	7,653.96	3.34	-0.04	3.34	
16,168.00	89.57	270.60	8,000.18	1,379.85	-7,628.94	7,748.03	0.79	0.04	0.79	
16,262.00	89.62	272.63	8,000.84	1,382.50	-7,722.90	7,841.39	2.16	0.05	2.16	
16,356.00	89.88	274.92	8,001.25	1,388.69	-7,816.69	7,935.10	2.45	0.28	2.44	
16,450.00	90.01	272.54	8,001.35	1,394.80	-7,910.48	8,028.80	2.54	0.14	-2.53	
16,544.00	89.88	272.93	8,001.44	1,399.29	-8,004.37	8,122.36	0.44	-0.14	0.41	
16,638.00	89.88	275.58	8,001.63	1,406.26	-8,098.11	8,216.12	2.82	0.00	2.82	
16,733.00	89.48	273.95	8,002.16	1,414.15	-8,192.77	8,310.94	1.77	-0.42	-1.72	
16,828.00	90.10	271.88	8,002.51	1,418.98	-8,287.64	8,405.52	2.27	0.65	-2.18	
16,922.00	90.19	270.73	8,002.27	1,421.12	-8,381.62	8,498.83	1.23	0.10	-1.22	
17,017.00	90.15	272.85	8,001.99	1,424.09	-8,476.57	8,593.22	2.23	-0.04	2.23	
17,111.00	88.91	269.19	8,002.76	1,425.77	-8,570.53	8,686.45	4.11	-1.32	-3.89	

Civitas Resources

Survey Report

Company:	CRESTONE PEAK RESOURCES	Local Co-ordinate Reference:	Well KING 3-65 28-29 2BH
Project:	ADAMS COUNTY	TVD Reference:	KB 25' @ 5610.00usft
Site:	SEC 28-T3S-R65W	MD Reference:	KB 25' @ 5610.00usft
Well:	KING 3-65 28-29 2BH	North Reference:	True
Wellbore:	OWB	Survey Calculation Method:	Minimum Curvature
Design:	FINAL SURVEY	Database:	EDM

Survey									
Measured Depth (usft)	Inclination (°)	Azimuth (°)	Vertical Depth (usft)	+N/-S (usft)	+E/-W (usft)	Vertical Section (usft)	Dogleg Rate (°/100ft)	Build Rate (°/100ft)	Turn Rate (°/100ft)
17,206.00	89.13	266.94	8,004.39	1,422.56	-8,665.46	8,779.93	2.38	0.23	-2.37
17,301.00	88.73	266.90	8,006.16	1,417.45	-8,760.30	8,873.06	0.42	-0.42	-0.04
17,396.00	88.38	267.78	8,008.56	1,413.05	-8,855.17	8,966.31	1.00	-0.37	0.93
17,490.00	88.29	267.96	8,011.29	1,409.56	-8,949.06	9,058.73	0.21	-0.10	0.19
17,585.00	87.72	267.03	8,014.60	1,405.41	-9,043.91	9,152.00	1.15	-0.60	-0.98
17,679.00	89.79	271.26	8,016.64	1,404.01	-9,137.86	9,244.77	5.01	2.20	4.50
17,773.00	89.93	272.23	8,016.87	1,406.87	-9,231.81	9,338.16	1.04	0.15	1.03
17,869.00	90.10	273.33	8,016.84	1,411.52	-9,327.70	9,433.72	1.16	0.18	1.15
17,963.00	91.30	272.19	8,015.70	1,416.05	-9,421.58	9,527.28	1.76	1.28	-1.21
18,057.00	90.68	270.86	8,014.07	1,418.55	-9,515.53	9,620.61	1.56	-0.66	-1.41
18,151.00	90.63	270.86	8,013.00	1,419.96	-9,609.51	9,713.82	0.05	-0.05	0.00
18,276.00	89.75	270.86	8,012.58	1,421.84	-9,734.49	9,837.78	0.70	-0.70	0.00
LAST SURVEY - 18276' MD, 8013' TVD									
18,346.00	89.75	270.86	8,012.89	1,422.89	-9,804.49	9,907.20	0.00	0.00	0.00
PTB - 18346' MD, 8013' TVD, 2173' FNL, 343' FWL SEC 29									

Design Targets									
Target Name - hit/miss target - Shape	Dip Angle (°)	Dip Dir. (°)	TVD (usft)	+N/-S (usft)	+E/-W (usft)	Northing (usft)	Easting (usft)	Latitude	Longitude
LP-KING 3-65 28-29 2BI - actual wellpath misses target center by 14.96usft at 8433.75usft MD (7918.20 TVD, 1330.40 N, 100.79 E) - Point	0.00	0.00	7,930.00	1,321.22	101.49	1,157,633.64	3,235,964.77	39.763006°N	104.660635°W
PBHL-KING 3-65 28-29 - actual wellpath misses target center by 47.45usft at 18346.00usft MD (8012.89 TVD, 1422.89 N, -9804.48 E) - Point	0.00	0.00	8,050.00	1,396.37	-9,817.56	1,157,614.94	3,226,045.52	39.763207°N	104.695918°W

Design Annotations					
Measured Depth (usft)	Vertical Depth (usft)	Local Coordinates			
		+N/-S (usft)	+E/-W (usft)	Comment	
3,346.00	3,298.87	407.22	193.88	SURFACE CSG - 3346' MD, 3299' TVD	
7,460.00	7,301.19	1,179.66	720.16	KOP - 7460' MD, 7301' TVD	
8,433.05	7,918.18	1,330.44	101.49	~330' X-OVER PNT - 8433.05' MD, 7918' TVD, 2191' FNL, 330' FEL SEC 28	
8,520.00	7,919.37	1,325.72	14.68	HZ LANDING PNT - 8520' MD, 7919' TVD	
18,276.00	8,012.58	1,421.84	-9,734.49	LAST SURVEY - 18276' MD, 8013' TVD	
18,346.00	8,012.89	1,422.89	-9,804.49	PTB - 18346' MD, 8013' TVD, 2173' FNL, 343' FWL SEC 29	

Checked By: _____ Approved By: _____ Date: _____