

CRESTONE PEAK RESOURCES

**ADAMS COUNTY
SEC 28-T3S-R65W
KING 3-65 28-29 1AH**

OWB

Design: FINAL SURVEY

Standard Survey Report

13 May, 2024

Project: ADAMS COUNTY
Site: SEC 28-T3S-R65W
Well: KING 3-65 28-29 1AH
Wellbore: OWB
Design: FINAL SURVEY

PROJECT DETAILS: ADAMS COUNTY
Geodetic System: US State Plane 1983
Datum: North American Datum 1983
Ellipsoid: GRS 1980
Zone: Colorado Northern Zone
System Datum: Mean Sea Level



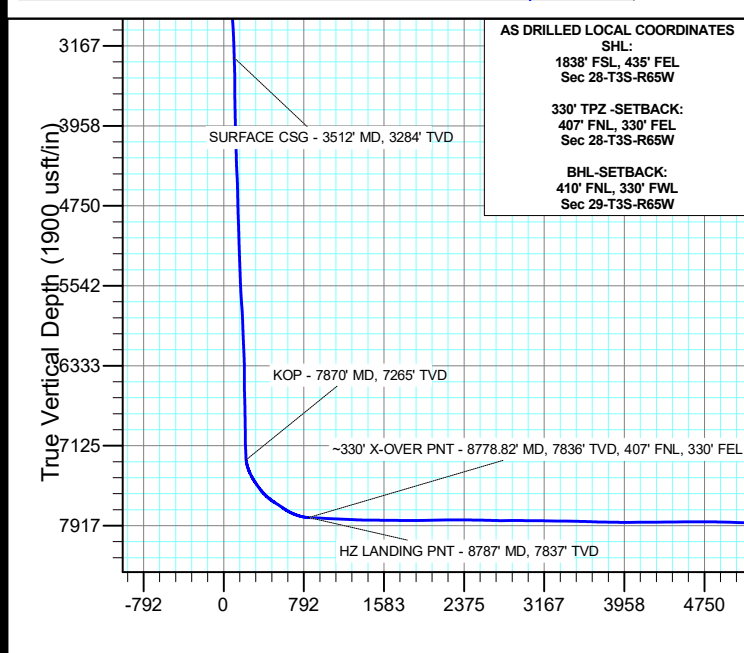
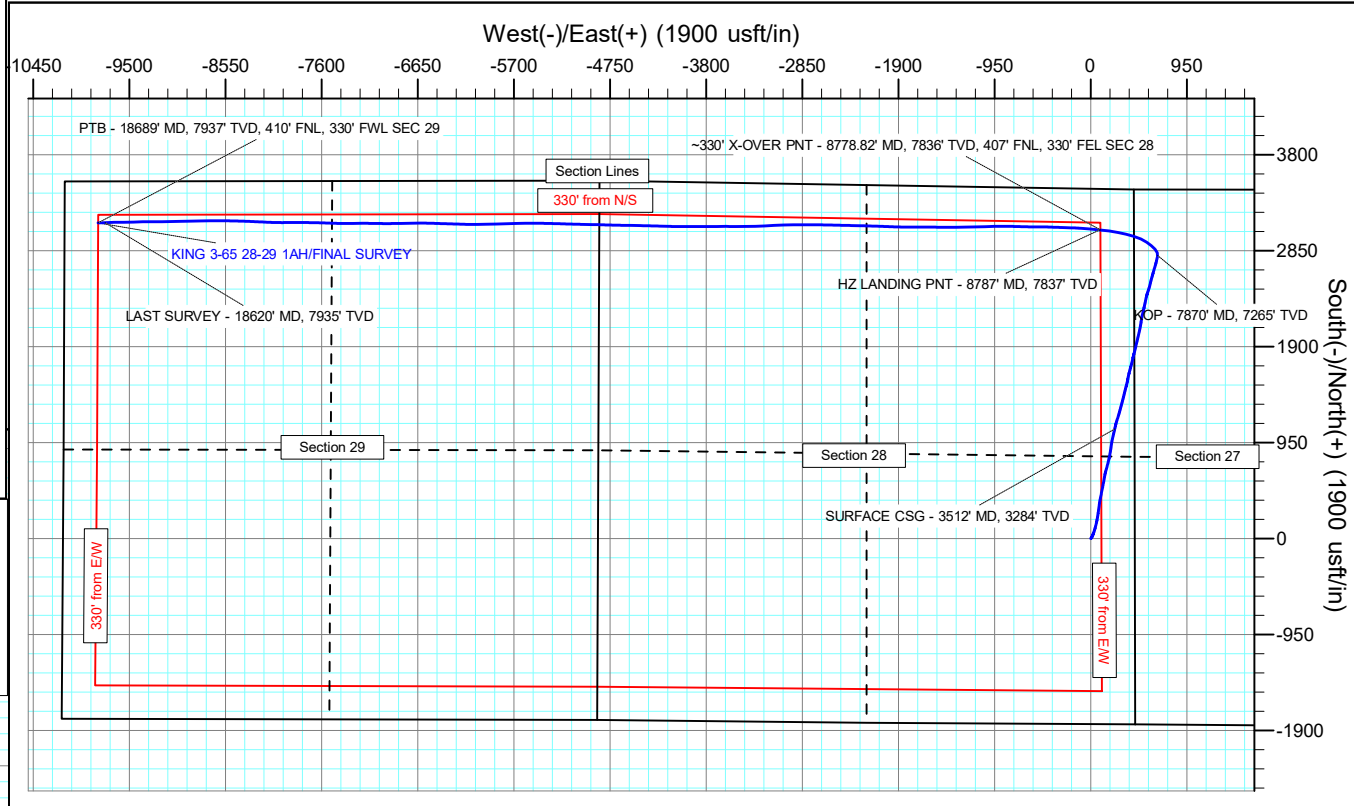
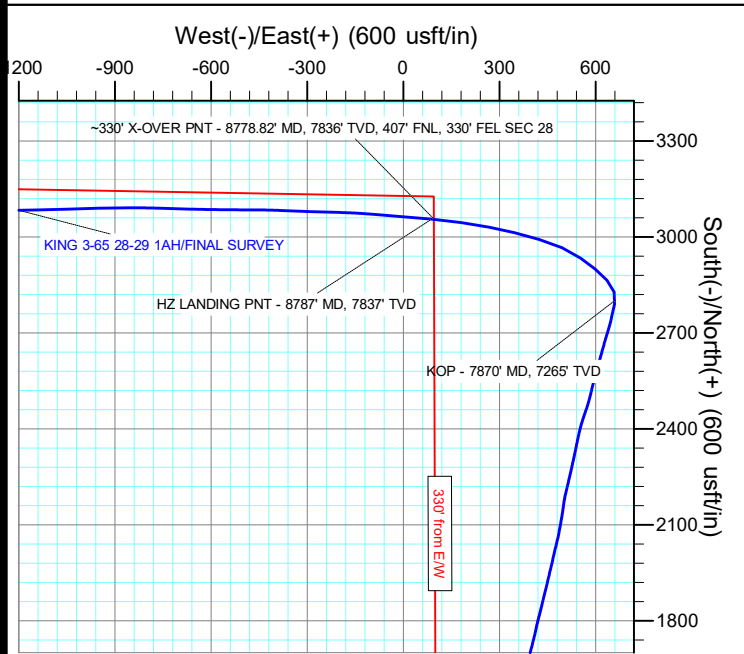
Azimuths to True North
Magnetic North: 7.43°
Magnetic Field
Strength: 51317.0nT
Dip Angle: 66.04°
Date: 5/7/2024
Model: IGRF2020

WELL DETAILS: KING 3-65 28-29 1AH

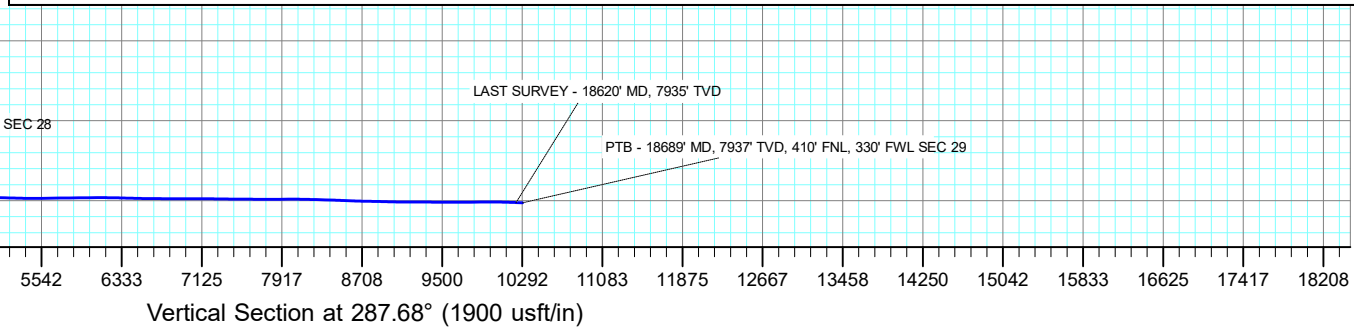
5585.00						Slot
+N/-S	+E/-W	Northing	Easting	Latitude	Longitude	
0.00	0.00	1156371.27	3235875.22	39.759543°N	104.660996°W	

ANNOTATIONS

MD	Inc	Azi	TVD	+N/-S	+E/-W	Vsect	Departure	Annotation
3512.00	20.95	12.86	3283.53	1085.29	237.36	103.37	1117.08	SURFACE CSG - 3512' MD, 3284' TVD
7870.00	24.22	3.14	7265.17	2802.00	660.95	221.03	2887.77	KOP - 7870' MD, 7265' TVD
8778.82	86.21	275.56	7836.39	3054.80	96.42	835.67	3542.86	~330' X-OVER PNT - 8778.82' MD, 7836' TVD, 407' FNL, 330' FEL SEC 28
8787.00	87.32	275.31	7836.85	3055.58	88.29	843.65	3550.92	HZ LANDING PNT - 8787' MD, 7837' TVD
18620.00	88.07	268.40	7934.94	3127.73	-9739.71	10229.57	13382.15	LAST SURVEY - 18620' MD, 7935' TVD
18689.00	88.07	268.40	7937.26	3125.80	-9808.64	10294.66	13451.11	PTB - 18689' MD, 7937' TVD, 410' FNL, 330' FWL SEC 29



AS DRILLED LOCAL COORDINATES
SHL:
1838' FSL, 435' FEL
Sec 28-T3S-R65W
330' TPZ -SETBACK:
407' FNL, 330' FEL
Sec 28-T3S-R65W
BHL-SETBACK:
410' FNL, 330' FWL
Sec 29-T3S-R65W



Civitas Resources

Survey Report

Company:	CRESTONE PEAK RESOURCES	Local Co-ordinate Reference:	Well KING 3-65 28-29 1AH
Project:	ADAMS COUNTY	TVD Reference:	KB 25' @ 5610.00usft
Site:	SEC 28-T3S-R65W	MD Reference:	KB 25' @ 5610.00usft
Well:	KING 3-65 28-29 1AH	North Reference:	True
Wellbore:	OWB	Survey Calculation Method:	Minimum Curvature
Design:	FINAL SURVEY	Database:	EDM

Project	ADAMS COUNTY		
Map System:	US State Plane 1983	System Datum:	Mean Sea Level
Geo Datum:	North American Datum 1983		
Map Zone:	Colorado Northern Zone		Using geodetic scale factor

Site		SEC 28-T3S-R65W					
Site Position:		Northing:	1,154,535.24	usft	Latitude:	39.754491°N	
From:	Lat/Long	Easting:	3,236,332.63	usft	Longitude:	104.659431°W	
Position Uncertainty:	0.00	usft	Slot Radius:	13.200	in	Grid Convergence:	0.54 °

Well	KING 3-65 28-29 1AH					
Well Position	+N/-S	0.00 usft	Northing:	1,156,371.26 usft	Latitude:	39.759543°N
	+E/-W	0.00 usft	Easting:	3,235,875.22 usft	Longitude:	104.660996°W
Position Uncertainty		0.00 usft	Wellhead Elevation:	usft	Ground Level:	5,585.00 usft

Wellbore	OWB				
Magnetics	Model Name	Sample Date	Declination (°)	Dip Angle (°)	Field Strength (nT)
	IGRF2020	5/7/2024	7.43	66.04	51,316.96941163

Design	FINAL SURVEY				
Audit Notes:					
Version:	1.0	Phase:	ACTUAL	Tie On Depth:	0.00
Vertical Section:	Depth From (TVD) (usft)	+N/-S (usft)	+E/-W (usft)	Direction (°)	
	0.00	0.00	0.00	287.68	

Survey Program	Date	5/10/2024			
From (usft)	To (usft)	Survey (Wellbore)	Tool Name	Description	
209.00	3,413.00	SURFACE SURVEY (OWB)	MWD OWSG	OWSG MWD - Standard	
3,578.00	18,689.00	FINAL SURVEY (OWB)	MWD OWSG	OWSG MWD - Standard	

Survey										
Measured Depth (usft)	Inclination (°)	Azimuth (°)	Vertical Depth (usft)	+N/-S (usft)	+E/-W (usft)	Vertical Section (usft)	Dogleg Rate (°/100ft)	Build Rate (°/100ft)	Turn Rate (°/100ft)	
0.00	0.00	0.00	0.00	0.00	0.00	0.00	0.00	0.00	0.00	
209.00	0.53	196.96	209.00	-0.92	-0.28	-0.01	0.25	0.25	0.00	
300.00	0.13	218.47	300.00	-1.41	-0.47	0.02	0.45	-0.44	23.64	
390.00	1.94	45.37	389.98	-0.42	0.55	-0.65	2.30	2.01	-192.33	
480.00	4.37	37.88	479.84	3.36	3.74	-2.54	2.73	2.70	-8.32	
574.00	6.19	32.33	573.43	10.47	8.65	-5.06	2.01	1.94	-5.90	
667.00	8.66	23.21	665.65	21.14	14.09	-7.01	2.93	2.66	-9.81	
762.00	10.43	25.14	759.33	35.50	20.57	-8.82	1.89	1.86	2.03	
857.00	12.90	18.67	852.37	53.34	27.61	-10.12	2.94	2.60	-6.81	
951.00	13.88	17.17	943.81	74.05	34.30	-10.20	1.11	1.04	-1.60	

Civitas Resources

Survey Report

Company:	CRESTONE PEAK RESOURCES	Local Co-ordinate Reference:	Well KING 3-65 28-29 1AH
Project:	ADAMS COUNTY	TVD Reference:	KB 25' @ 5610.00usft
Site:	SEC 28-T3S-R65W	MD Reference:	KB 25' @ 5610.00usft
Well:	KING 3-65 28-29 1AH	North Reference:	True
Wellbore:	OWB	Survey Calculation Method:	Minimum Curvature
Design:	FINAL SURVEY	Database:	EDM

Survey									
Measured Depth (usft)	Inclination (°)	Azimuth (°)	Vertical Depth (usft)	+N/-S (usft)	+E/-W (usft)	Vertical Section (usft)	Dogleg Rate (°/100ft)	Build Rate (°/100ft)	Turn Rate (°/100ft)
1,045.00	15.25	17.61	1,034.79	96.61	41.37	-10.09	1.46	1.46	0.47
1,141.00	18.78	13.07	1,126.57	123.70	48.69	-8.83	3.93	3.68	-4.73
1,236.00	18.52	13.29	1,216.59	153.28	55.61	-6.45	0.28	-0.27	0.23
1,331.00	20.86	10.73	1,306.03	184.59	62.23	-3.25	2.62	2.46	-2.69
1,426.00	22.40	9.50	1,394.34	219.06	68.37	1.37	1.69	1.62	-1.29
1,520.00	24.70	7.42	1,480.50	256.21	73.86	7.42	2.60	2.45	-2.21
1,615.00	25.63	8.08	1,566.48	296.23	79.31	14.38	1.02	0.98	0.69
1,710.00	24.79	7.46	1,652.44	336.32	84.79	21.33	0.93	-0.88	-0.65
1,805.00	25.28	10.47	1,738.51	376.02	91.06	27.41	1.44	0.52	3.17
1,900.00	26.43	11.66	1,824.00	416.68	99.02	32.17	1.33	1.21	1.25
1,994.00	26.87	11.26	1,908.02	458.00	107.40	36.74	0.51	0.47	-0.43
2,089.00	27.09	11.31	1,992.68	500.26	115.83	41.54	0.23	0.23	0.05
2,184.00	26.51	11.00	2,077.47	542.29	124.12	46.40	0.63	-0.61	-0.33
2,278.00	25.90	9.90	2,161.81	583.11	131.65	51.61	0.83	-0.65	-1.17
2,372.00	24.92	9.24	2,246.72	622.88	138.36	57.30	1.09	-1.04	-0.70
2,466.00	25.14	15.54	2,331.90	661.67	146.89	60.95	2.84	0.23	6.70
2,560.00	24.13	15.71	2,417.35	699.40	157.44	62.35	1.08	-1.07	0.18
2,655.00	23.73	14.83	2,504.18	736.57	167.59	63.97	0.56	-0.42	-0.93
2,750.00	23.46	12.85	2,591.24	773.49	176.69	66.51	0.88	-0.28	-2.08
2,845.00	26.07	11.09	2,677.50	812.42	184.91	70.49	2.85	2.75	-1.85
2,940.00	26.69	10.16	2,762.60	853.90	192.69	75.68	0.78	0.65	-0.98
3,035.00	25.32	8.40	2,847.99	895.00	199.42	81.74	1.65	-1.44	-1.85
3,129.00	24.04	7.46	2,933.40	933.88	204.85	88.38	1.42	-1.36	-1.00
3,223.00	25.67	12.01	3,018.70	972.78	211.57	93.79	2.67	1.73	4.84
3,318.00	24.88	12.72	3,104.60	1,012.40	220.25	97.54	0.89	-0.83	0.75
3,413.00	22.54	13.64	3,191.58	1,049.59	228.95	100.55	2.49	-2.46	0.97
3,512.00	20.95	12.86	3,283.53	1,085.29	237.36	103.37	1.63	-1.61	-0.78
SURFACE CSG - 3512' MD, 3284' TVD									
3,578.00	19.89	12.28	3,345.38	1,107.76	242.38	105.42	1.63	-1.60	-0.88
3,672.00	22.23	15.05	3,433.10	1,140.56	250.40	107.74	2.70	2.49	2.95
3,766.00	23.77	17.96	3,519.63	1,175.76	260.86	108.46	2.04	1.64	3.10
3,860.00	24.04	16.95	3,605.56	1,212.10	272.28	108.61	0.52	0.29	-1.07
3,954.00	25.67	15.85	3,690.85	1,250.00	283.42	109.50	1.80	1.73	-1.17
4,049.00	23.69	14.70	3,777.17	1,288.26	293.89	111.14	2.14	-2.08	-1.21
4,144.00	25.41	15.41	3,863.58	1,326.37	304.15	112.94	1.84	1.81	0.75
4,238.00	23.64	14.92	3,949.10	1,364.03	314.36	114.65	1.90	-1.88	-0.52
4,332.00	25.85	13.69	4,034.46	1,402.15	324.06	116.98	2.41	2.35	-1.31
4,427.00	23.86	13.55	4,120.66	1,440.96	333.47	119.80	2.10	-2.09	-0.15
4,522.00	25.81	14.48	4,206.87	1,479.67	343.14	122.33	2.09	2.05	0.98
4,616.00	23.24	15.01	4,292.38	1,517.40	353.06	124.34	2.74	-2.73	0.56
4,711.00	25.06	11.62	4,379.07	1,555.21	361.97	127.33	2.41	1.92	-3.57
4,805.00	22.45	9.90	4,465.10	1,592.40	369.07	131.86	2.87	-2.78	-1.83
4,901.00	22.01	14.04	4,553.97	1,627.91	376.58	135.48	1.69	-0.46	4.31

Civitas Resources

Survey Report

Company:	CRESTONE PEAK RESOURCES	Local Co-ordinate Reference:	Well KING 3-65 28-29 1AH
Project:	ADAMS COUNTY	TVD Reference:	KB 25' @ 5610.00usft
Site:	SEC 28-T3S-R65W	MD Reference:	KB 25' @ 5610.00usft
Well:	KING 3-65 28-29 1AH	North Reference:	True
Wellbore:	OWB	Survey Calculation Method:	Minimum Curvature
Design:	FINAL SURVEY	Database:	EDM

Survey										
Measured Depth (usft)	Inclination (°)	Azimuth (°)	Vertical Depth (usft)	+N/-S (usft)	+E/-W (usft)	Vertical Section (usft)	Dogleg Rate (°/100ft)	Build Rate (°/100ft)	Turn Rate (°/100ft)	
4,996.00	25.28	15.41	4,640.98	1,664.75	386.29	137.41	3.49	3.44	1.44	
5,090.00	22.49	14.88	4,726.92	1,701.48	396.25	139.09	2.98	-2.97	-0.56	
5,185.00	23.77	14.00	4,814.28	1,737.62	405.55	141.20	1.40	1.35	-0.93	
5,279.00	23.51	12.10	4,900.40	1,774.33	414.06	144.24	0.86	-0.28	-2.02	
5,374.00	26.12	14.66	4,986.62	1,813.10	423.32	147.18	2.97	2.75	2.69	
5,469.00	23.51	13.82	5,072.84	1,851.74	433.15	149.55	2.77	-2.75	-0.88	
5,563.00	24.04	13.73	5,158.86	1,888.54	442.17	152.13	0.57	0.56	-0.10	
5,658.00	24.30	13.07	5,245.54	1,926.38	451.18	155.03	0.39	0.27	-0.69	
5,753.00	25.98	13.29	5,331.53	1,965.67	460.39	158.19	1.77	1.77	0.23	
5,848.00	24.39	12.89	5,417.50	2,005.05	469.55	161.42	1.68	-1.67	-0.42	
5,943.00	23.82	13.69	5,504.22	2,042.81	478.46	164.39	0.69	-0.60	0.84	
6,038.00	23.95	10.65	5,591.08	2,080.40	486.56	168.08	1.30	0.14	-3.20	
6,132.00	26.43	9.94	5,676.14	2,119.76	493.70	173.23	2.66	2.64	-0.76	
6,226.00	23.77	7.20	5,761.26	2,159.17	499.69	179.50	3.09	-2.83	-2.91	
6,321.00	24.88	12.72	5,847.83	2,197.66	506.49	184.70	2.66	1.17	5.81	
6,415.00	25.06	13.82	5,933.05	2,236.28	515.60	187.75	0.53	0.19	1.17	
6,510.00	22.76	12.32	6,019.89	2,273.78	524.33	190.82	2.50	-2.42	-1.58	
6,606.00	24.97	12.45	6,107.68	2,311.71	532.66	194.40	2.30	2.30	0.14	
6,700.00	23.07	11.09	6,193.53	2,349.16	540.48	198.32	2.11	-2.02	-1.45	
6,794.00	22.45	12.89	6,280.21	2,384.73	548.03	201.93	0.99	-0.66	1.91	
6,889.00	20.81	16.51	6,368.52	2,418.60	556.87	203.79	2.22	-1.73	3.81	
6,984.00	22.98	19.59	6,456.67	2,452.26	567.89	203.51	2.58	2.28	3.24	
7,079.00	23.55	15.45	6,543.95	2,488.02	579.16	203.63	1.82	0.60	-4.36	
7,174.00	23.24	12.98	6,631.14	2,524.58	588.43	205.90	1.08	-0.33	-2.60	
7,269.00	24.44	15.05	6,718.04	2,561.82	597.74	208.33	1.54	1.26	2.18	
7,364.00	25.94	15.98	6,804.00	2,600.78	608.56	209.85	1.63	1.58	0.98	
7,460.00	22.71	15.32	6,891.47	2,638.85	619.24	211.23	3.38	-3.36	-0.69	
7,554.00	23.46	16.15	6,977.94	2,674.32	629.24	212.48	0.87	0.80	0.88	
7,650.00	24.44	16.90	7,065.67	2,711.68	640.33	213.26	1.07	1.02	0.78	
7,743.00	25.45	12.06	7,150.00	2,749.63	650.10	215.47	2.45	1.09	-5.20	
7,838.00	24.75	13.55	7,236.03	2,788.93	659.02	218.90	0.99	-0.74	1.57	
7,870.00	24.22	3.14	7,265.17	2,802.00	660.95	221.03	13.57	-1.66	-32.54	
KOP - 7870' MD, 7265' TVD										
7,933.00	25.28	342.78	7,322.49	2,827.80	657.67	231.99	13.57	1.68	-32.31	
8,028.00	29.30	317.53	7,407.18	2,864.46	635.89	263.88	12.80	4.23	-26.58	
8,123.00	35.88	309.64	7,487.21	2,899.42	598.70	309.93	8.23	6.93	-8.31	
8,217.00	39.15	304.71	7,561.78	2,933.91	553.07	363.87	4.72	3.48	-5.24	
8,313.00	48.25	294.44	7,631.20	2,966.09	495.36	428.63	12.00	9.48	-10.70	
8,408.00	58.20	286.11	7,688.07	2,992.05	424.06	504.45	12.60	10.47	-8.77	
8,503.00	54.53	284.83	7,740.68	3,013.16	347.85	583.47	4.02	-3.86	-1.35	
8,598.00	64.43	279.99	7,788.89	3,030.55	268.02	664.81	11.30	10.42	-5.09	
8,693.00	74.59	278.31	7,822.10	3,044.64	180.27	752.69	10.82	10.69	-1.77	
8,778.82	86.21	275.56	7,836.39	3,054.80	96.42	835.67	13.90	13.54	-3.20	
~330' X-OVER PNT - 8778.82' MD, 7836' TVD, 407' FNL, 330' FEL SEC 28										

Civitas Resources

Survey Report

Company:	CRESTONE PEAK RESOURCES	Local Co-ordinate Reference:	Well KING 3-65 28-29 1AH
Project:	ADAMS COUNTY	TVD Reference:	KB 25' @ 5610.00usft
Site:	SEC 28-T3S-R65W	MD Reference:	KB 25' @ 5610.00usft
Well:	KING 3-65 28-29 1AH	North Reference:	True
Wellbore:	OWB	Survey Calculation Method:	Minimum Curvature
Design:	FINAL SURVEY	Database:	EDM

Survey										
Measured Depth (usft)	Inclination (°)	Azimuth (°)	Vertical Depth (usft)	+N/-S (usft)	+E/-W (usft)	Vertical Section (usft)	Dogleg Rate (°/100ft)	Build Rate (°/100ft)	Turn Rate (°/100ft)	
8,787.00	87.32	275.31	7,836.85	3,055.58	88.29	843.65	13.90	13.55	-3.11	
HZ LANDING PNT - 8787' MD, 7837' TVD										
8,882.00	87.36	274.52	7,841.26	3,063.71	-6.26	936.20	0.83	0.04	-0.83	
8,976.00	87.45	274.61	7,845.51	3,071.18	-99.86	1,027.66	0.14	0.10	0.10	
9,072.00	87.54	271.70	7,849.71	3,076.46	-195.61	1,120.49	3.03	0.09	-3.03	
9,166.00	87.41	271.83	7,853.85	3,079.35	-289.48	1,210.80	0.20	-0.14	0.14	
9,260.00	87.19	272.36	7,858.28	3,082.78	-383.31	1,301.25	0.61	-0.23	0.56	
9,355.00	89.26	269.98	7,861.22	3,084.72	-478.23	1,392.28	3.32	2.18	-2.51	
9,450.00	89.66	270.78	7,862.12	3,085.35	-573.23	1,482.98	0.94	0.42	0.84	
9,544.00	89.53	271.39	7,862.78	3,087.13	-667.21	1,573.06	0.66	-0.14	0.65	
9,639.00	89.26	271.79	7,863.79	3,089.77	-762.16	1,664.34	0.51	-0.28	0.42	
9,733.00	89.79	270.20	7,864.57	3,091.40	-856.14	1,754.38	1.78	0.56	-1.69	
9,827.00	89.09	267.96	7,865.48	3,089.89	-950.12	1,843.46	2.50	-0.74	-2.38	
9,922.00	91.07	268.40	7,865.35	3,086.87	-1,045.07	1,933.01	2.14	2.08	0.46	
10,016.00	91.30	268.62	7,863.41	3,084.43	-1,139.02	2,021.78	0.34	0.24	0.23	
10,111.00	90.68	269.54	7,861.77	3,082.90	-1,233.99	2,111.80	1.17	-0.65	0.97	
10,206.00	90.90	269.45	7,860.46	3,082.07	-1,328.97	2,202.05	0.25	0.23	-0.09	
10,301.00	90.06	270.20	7,859.66	3,081.78	-1,423.97	2,292.47	1.19	-0.88	0.79	
10,396.00	89.62	270.25	7,859.93	3,082.15	-1,518.97	2,383.10	0.47	-0.46	0.05	
10,491.00	89.31	270.69	7,860.81	3,082.93	-1,613.96	2,473.84	0.57	-0.33	0.46	
10,586.00	88.82	270.29	7,862.36	3,083.74	-1,708.94	2,564.59	0.67	-0.52	-0.42	
10,681.00	88.07	269.54	7,864.94	3,083.60	-1,803.91	2,655.03	1.12	-0.79	-0.79	
10,775.00	90.06	271.57	7,866.48	3,084.51	-1,897.88	2,744.84	3.02	2.12	2.16	
10,870.00	90.59	272.36	7,865.94	3,087.77	-1,992.82	2,836.29	1.00	0.56	0.83	
10,965.00	89.44	271.79	7,865.91	3,091.21	-2,087.76	2,927.79	1.35	-1.21	-0.60	
11,059.00	89.75	271.61	7,866.58	3,094.00	-2,181.71	3,018.15	0.38	0.33	-0.19	
11,154.00	89.35	271.48	7,867.32	3,096.56	-2,276.68	3,109.41	0.44	-0.42	-0.14	
11,247.00	89.00	271.57	7,868.66	3,099.03	-2,369.63	3,198.73	0.39	-0.38	0.10	
11,341.00	88.95	271.04	7,870.34	3,101.17	-2,463.59	3,288.90	0.57	-0.05	-0.56	
11,437.00	89.17	271.44	7,871.92	3,103.25	-2,559.56	3,380.97	0.48	0.23	0.42	
11,531.00	89.22	270.86	7,873.24	3,105.14	-2,653.53	3,471.08	0.62	0.05	-0.62	
11,721.00	87.67	270.20	7,878.39	3,106.89	-2,843.44	3,652.56	0.89	-0.82	-0.35	
11,816.00	89.40	268.40	7,880.82	3,105.73	-2,938.40	3,742.68	2.63	1.82	-1.89	
11,911.00	89.22	268.62	7,881.97	3,103.26	-3,033.36	3,832.41	0.30	-0.19	0.23	
12,006.00	88.60	267.03	7,883.77	3,099.66	-3,128.27	3,921.74	1.80	-0.65	-1.67	
12,100.00	90.94	266.90	7,884.15	3,094.68	-3,222.13	4,009.66	2.49	2.49	-0.14	
12,194.00	90.46	268.92	7,883.00	3,091.25	-3,316.06	4,098.11	2.21	-0.51	2.15	
12,384.00	90.37	270.07	7,881.63	3,089.58	-3,506.04	4,278.62	0.61	-0.05	0.61	
12,478.00	90.59	270.20	7,880.84	3,089.80	-3,600.04	4,368.24	0.27	0.23	0.14	
12,573.00	90.59	269.37	7,879.86	3,089.45	-3,695.03	4,458.64	0.87	0.00	-0.87	
12,668.00	91.12	269.41	7,878.44	3,088.43	-3,790.02	4,548.84	0.56	0.56	0.04	
12,762.00	89.40	270.47	7,878.02	3,088.34	-3,884.01	4,638.36	2.15	-1.83	1.13	
12,951.00	89.93	269.94	7,879.12	3,089.01	-4,073.00	4,818.64	0.40	0.28	-0.28	

Civitas Resources

Survey Report

Company:	CRESTONE PEAK RESOURCES	Local Co-ordinate Reference:	Well KING 3-65 28-29 1AH
Project:	ADAMS COUNTY	TVD Reference:	KB 25' @ 5610.00usft
Site:	SEC 28-T3S-R65W	MD Reference:	KB 25' @ 5610.00usft
Well:	KING 3-65 28-29 1AH	North Reference:	True
Wellbore:	OWB	Survey Calculation Method:	Minimum Curvature
Design:	FINAL SURVEY	Database:	EDM

Survey										
Measured Depth (usft)	Inclination (°)	Azimuth (°)	Vertical Depth (usft)	+N/-S (usft)	+E/-W (usft)	Vertical Section (usft)	Dogleg Rate (°/100ft)	Build Rate (°/100ft)	Turn Rate (°/100ft)	
13,046.00	88.56	271.70	7,880.37	3,090.37	-4,167.98	4,909.54	2.35	-1.44	1.85	
13,141.00	88.47	271.75	7,882.84	3,093.23	-4,262.90	5,000.86	0.11	-0.09	0.05	
13,236.00	88.47	271.30	7,885.37	3,095.76	-4,357.84	5,092.07	0.47	0.00	-0.47	
13,330.00	88.47	271.08	7,887.88	3,097.71	-4,451.78	5,182.18	0.23	0.00	-0.23	
13,425.00	88.29	271.00	7,890.57	3,099.43	-4,546.73	5,273.16	0.21	-0.19	-0.08	
13,520.00	88.78	271.04	7,893.00	3,101.12	-4,641.68	5,364.15	0.52	0.52	0.04	
13,710.00	90.68	271.97	7,893.89	3,106.11	-4,831.60	5,546.62	1.11	1.00	0.49	
13,805.00	90.85	271.00	7,892.62	3,108.57	-4,926.56	5,637.84	1.04	0.18	-1.02	
13,900.00	91.25	271.08	7,890.88	3,110.30	-5,021.53	5,728.85	0.43	0.42	0.08	
13,995.00	90.37	271.44	7,889.54	3,112.39	-5,116.50	5,819.97	1.00	-0.93	0.38	
14,090.00	91.03	272.23	7,888.38	3,115.43	-5,211.44	5,911.35	1.08	0.69	0.83	
14,183.00	90.10	271.26	7,887.46	3,118.26	-5,304.39	6,000.77	1.44	-1.00	-1.04	
14,278.00	90.37	271.04	7,887.07	3,120.17	-5,399.37	6,091.85	0.37	0.28	-0.23	
14,373.00	89.53	270.11	7,887.16	3,121.12	-5,494.36	6,182.65	1.32	-0.88	-0.98	
14,466.00	89.09	269.50	7,888.28	3,120.80	-5,587.36	6,271.15	0.81	-0.47	-0.66	
14,560.00	88.20	268.35	7,890.50	3,119.04	-5,681.31	6,360.13	1.55	-0.95	-1.22	
14,749.00	89.09	268.35	7,894.97	3,113.60	-5,870.18	6,538.43	0.47	0.47	0.00	
14,844.00	89.93	269.81	7,895.78	3,112.08	-5,965.16	6,628.47	1.77	0.88	1.54	
14,939.00	89.00	267.96	7,896.67	3,110.23	-6,060.13	6,718.39	2.18	-0.98	-1.95	
15,033.00	89.84	271.57	7,897.62	3,109.84	-6,154.11	6,807.82	3.94	0.89	3.84	
15,128.00	89.88	272.05	7,897.85	3,112.84	-6,249.06	6,899.20	0.51	0.04	0.51	
15,222.00	89.84	271.48	7,898.08	3,115.74	-6,343.02	6,989.60	0.61	-0.04	-0.61	
15,317.00	90.06	272.10	7,898.16	3,118.71	-6,437.97	7,080.97	0.69	0.23	0.65	
15,412.00	89.93	271.30	7,898.17	3,121.52	-6,532.93	7,172.30	0.85	-0.14	-0.84	
15,506.00	89.31	269.72	7,898.80	3,122.36	-6,626.92	7,262.11	1.81	-0.66	-1.68	
15,601.00	89.22	268.26	7,900.01	3,120.69	-6,721.89	7,352.09	1.54	-0.09	-1.54	
15,696.00	89.40	269.94	7,901.16	3,119.19	-6,816.87	7,442.13	1.78	0.19	1.77	
15,791.00	89.88	269.01	7,901.76	3,118.32	-6,911.86	7,532.37	1.10	0.51	-0.98	
15,885.00	89.44	271.13	7,902.31	3,118.44	-7,005.86	7,621.96	2.30	-0.47	2.26	
15,979.00	89.57	270.60	7,903.13	3,119.86	-7,099.84	7,711.94	0.58	0.14	-0.56	
16,074.00	90.32	270.11	7,903.22	3,120.45	-7,194.84	7,802.63	0.94	0.79	-0.52	
16,169.00	90.54	269.01	7,902.50	3,119.72	-7,289.83	7,892.92	1.18	0.23	-1.16	
16,263.00	90.19	270.33	7,901.90	3,119.17	-7,383.83	7,982.31	1.45	-0.37	1.40	
16,357.00	89.40	272.01	7,902.24	3,121.09	-7,477.80	8,072.43	1.97	-0.84	1.79	
16,451.00	88.82	271.83	7,903.70	3,124.24	-7,571.74	8,162.89	0.65	-0.62	-0.19	
16,545.00	88.33	271.26	7,906.04	3,126.78	-7,665.67	8,253.16	0.80	-0.52	-0.61	
16,639.00	88.33	270.33	7,908.78	3,128.08	-7,759.62	8,343.07	0.99	0.00	-0.99	
16,734.00	88.33	270.16	7,911.55	3,128.49	-7,854.58	8,433.67	0.18	0.00	-0.18	
16,829.00	87.67	269.28	7,914.86	3,128.02	-7,949.52	8,523.99	1.16	-0.69	-0.93	
16,923.00	87.72	271.04	7,918.64	3,128.29	-8,043.44	8,613.55	1.87	0.05	1.87	
17,018.00	88.82	272.89	7,921.51	3,131.54	-8,138.34	8,704.96	2.26	1.16	1.95	
17,112.00	89.17	272.49	7,923.16	3,135.95	-8,232.22	8,795.75	0.57	0.37	-0.43	
17,207.00	88.60	272.14	7,925.01	3,139.79	-8,327.12	8,887.33	0.70	-0.60	-0.37	
17,302.00	88.25	271.57	7,927.62	3,142.86	-8,422.04	8,978.70	0.70	-0.37	-0.60	

Civitas Resources

Survey Report

Company:	CRESTONE PEAK RESOURCES	Local Co-ordinate Reference:	Well KING 3-65 28-29 1AH
Project:	ADAMS COUNTY	TVD Reference:	KB 25' @ 5610.00usft
Site:	SEC 28-T3S-R65W	MD Reference:	KB 25' @ 5610.00usft
Well:	KING 3-65 28-29 1AH	North Reference:	True
Wellbore:	OWB	Survey Calculation Method:	Minimum Curvature
Design:	FINAL SURVEY	Database:	EDM

Survey									
Measured Depth (usft)	Inclination (°)	Azimuth (°)	Vertical Depth (usft)	+N/-S (usft)	+E/-W (usft)	Vertical Section (usft)	Dogleg Rate (°/100ft)	Build Rate (°/100ft)	Turn Rate (°/100ft)
17,397.00	89.88	271.08	7,929.17	3,145.06	-8,516.99	9,069.84	1.79	1.72	-0.52
17,491.00	89.70	269.98	7,929.51	3,145.93	-8,610.99	9,159.66	1.19	-0.19	-1.17
17,586.00	89.79	269.54	7,929.94	3,145.53	-8,705.99	9,250.05	0.47	0.09	-0.46
17,680.00	89.66	268.26	7,930.39	3,143.73	-8,799.97	9,339.05	1.37	-0.14	-1.36
17,774.00	89.17	268.92	7,931.35	3,141.41	-8,893.93	9,427.88	0.87	-0.52	0.70
17,870.00	90.06	269.32	7,931.99	3,139.94	-8,989.92	9,518.88	1.02	0.93	0.42
17,964.00	89.93	268.48	7,932.00	3,138.13	-9,083.90	9,607.88	0.90	-0.14	-0.89
18,058.00	90.37	270.20	7,931.76	3,137.05	-9,177.89	9,697.10	1.89	0.47	1.83
18,152.00	90.41	269.32	7,931.12	3,136.66	-9,271.88	9,786.54	0.94	0.04	-0.94
18,246.00	90.32	269.28	7,930.52	3,135.51	-9,365.88	9,875.75	0.10	-0.10	-0.04
18,340.00	90.81	268.18	7,929.59	3,133.43	-9,459.85	9,964.65	1.28	0.52	-1.17
18,435.00	88.86	269.28	7,929.86	3,131.32	-9,554.82	10,054.50	2.36	-2.05	1.16
18,530.00	88.38	268.92	7,932.15	3,129.83	-9,649.78	10,144.52	0.63	-0.51	-0.38
18,620.00	88.07	268.40	7,934.94	3,127.73	-9,739.71	10,229.57	0.67	-0.34	-0.58
LAST SURVEY - 18620' MD, 7935' TVD									
18,689.00	88.07	268.40	7,937.26	3,125.80	-9,808.64	10,294.66	0.00	0.00	0.00
PTB - 18689' MD, 7937' TVD, 410' FNL, 330' FWL SEC 29									

Design Targets									
Target Name	Dip Angle (°)	Dip Dir. (°)	TVD (usft)	+N/-S (usft)	+E/-W (usft)	Northing (usft)	Easting (usft)	Latitude	Longitude
- hit/miss target									
- Shape									
LP-KING 3-65 28-29 1AI	0.00	0.00	7,860.00	3,081.38	96.42	1,159,453.40	3,235,942.48	39.768002°N	104.660653°W
- actual wellpath misses target center by 35.33usft at 8782.67usft MD (7836.63 TVD, 3055.17 N, 92.60 E)									
- Point									
PBHL-KING 3-65 28-29	0.00	0.00	7,930.00	3,156.17	-9,808.97	1,159,434.46	3,226,036.89	39.768202°N	104.695890°W
- actual wellpath misses target center by 31.21usft at 18688.24usft MD (7937.24 TVD, 3125.82 N, -9807.88 E)									
- Point									

Design Annotations					
Measured Depth (usft)	Vertical Depth (usft)	Local Coordinates			
		+N/-S (usft)	+E/-W (usft)	Comment	
3,512.00	3,283.53	1,085.29	237.36	SURFACE CSG - 3512' MD, 3284' TVD	
7,870.00	7,265.17	2,802.00	660.95	KOP - 7870' MD, 7265' TVD	
8,778.82	7,836.39	3,054.80	96.42	~330' X-OVER PNT - 8778.82' MD, 7836' TVD, 407' FNL, 330' FEL SEC 28	
8,787.00	7,836.85	3,055.58	88.29	HZ LANDING PNT - 8787' MD, 7837' TVD	
18,620.00	7,934.94	3,127.73	-9,739.71	LAST SURVEY - 18620' MD, 7935' TVD	
18,689.00	7,937.26	3,125.80	-9,808.64	PTB - 18689' MD, 7937' TVD, 410' FNL, 330' FWL SEC 29	

Checked By: _____ Approved By: _____ Date: _____