

TABLE 1
SUMMARY OF VOLATILE ORGANIC SOIL CHEMISTRY DATA
PDC 69175
GUS LD PAD, ADAMS COUNTY, COLORADO
REM #

Sample ID	Sample Date	Depth (ft)	Benzene (mg/kg)	Toluene (mg/kg)	Ethyl-Benzene (mg/kg)	Xylenes (mg/kg)	1,2,4- Trimethyl- Benzene (mg/kg)	1,3,5- Trimethyl- Benzene (mg/kg)	Naphthalene (mg/kg)	TPH (mg/kg)	TPH GRO (mg/kg)	TPH DRO (mg/kg)	TPH ORO (mg/kg)
ECMC Table 915-1 Limits (Residential SSL)			1.2	490	5.8	58	30	27	2	500	500**		
ECMC Table 915-1 Limits (Protection of Groundwater SSL)			0.0026	0.69	0.78	9.9	0.0081	0.0087	0.0038	500	500**		
Waste Char	5/30/2024	0.2	<0.20	0.87	<0.50	3.3	6.4	<0.50	1.3	4,210	210	3000	1000
FS-01	06/03/2024	1.5	<0.00200	<0.00200	<0.00200	<0.00200	<0.00200	<0.00200	<0.002	<125.2	<0.200	<25.0	<100
FS-02	06/03/2024	1.5	<0.00200	<0.00200	<0.00200	<0.00200	<0.00200	<0.00200	<0.002	<125.2	<0.200	<25.0	<100
FS-03	06/03/2024	1.5	<0.00200	<0.00200	<0.00200	<0.00200	<0.00200	<0.00200	<0.002	<125.2	<0.200	<25.0	<100
FS-04	06/03/2024	1	<0.00200	<0.00200	<0.00200	<0.00200	<0.00200	<0.00200	<0.002	<125.2	<0.200	<25.0	<100
FS-05	06/03/2024	0.5	<0.00200	<0.00200	<0.00200	<0.00200	<0.00200	<0.00200	<0.002	<125.2	<0.200	<25.0	<100
FS-06	06/03/2024	0.5	<0.00200	<0.00200	<0.00200	<0.00200	<0.00200	<0.00200	<0.002	<125.2	<0.200	<25.0	<100
FS-07	06/03/2024	0.5	<0.00200	<0.00200	<0.00200	<0.00200	<0.00200	<0.00200	<0.002	<125.2	<0.200	<25.0	<100
FS-08	06/03/2024	0.5	<0.00200	<0.00200	<0.00200	<0.00200	<0.00200	<0.00200	<0.002	<125.2	<0.200	<25.0	<100
FS-09	06/03/2024	0.5	<0.00200	<0.00200	<0.00200	<0.00200	<0.00200	<0.00200	<0.002	<125.2	<0.200	<25.0	<100
SS-01	06/03/2024	1	<0.00200	<0.00200	<0.00200	<0.00200	<0.00200	<0.00200	<0.002	<125.2	<0.200	<25.0	<100
SS-02	06/03/2024	1	<0.00200	<0.00200	<0.00200	<0.00200	<0.00200	<0.00200	<0.002	<125.2	<0.200	<25.0	<100

1. Bold values exceed the ECMC Table 915-1 limit(s)

2. Red & blue highlighted soil analytical values indicate an exceedance of the referenced soil screening level (SSL)

3. * Indicates laboratory minimum detection limit in excess of SSL

4. ** Summation of GRO+DRO+ORO must be less than 500 mg/kg

NA - Not analyzed

 = Source material characterization sample, excavated and transported off site for disposal.
 = Material excavated and transported off site for disposal.

TABLE 2
SUMMARY OF POLYCYCLIC AROMATIC HYDROCARBON SOIL CHEMISTRY DATA
PDC 69175
GUS LD PAD, ADAMS COUNTY, COLORADO
REM #

Sample ID	Sample Date	Depth (ft)	Acenaphthene (mg/kg)	Anthracene (mg/kg)	Benzo (a) Anthracene (mg/kg)	Benzo (a) Pyrene (mg/kg)	Benzo (b) Fluoranthene (mg/kg)	Benzo (k) Fluoranthene (mg/kg)	Chrysene (mg/kg)	Dibenzo (a,h) Anthracene (mg/kg)	Fluoranthene (mg/kg)	Fluorene (mg/kg)	Indeno (1,2,3- cd) Pyrene (mg/kg)	Pyrene (mg/kg)	1-Methyl - Naphthalene (mg/kg)	2-Methyl- Naphthalene (mg/kg)
ECMC Table 915-1 Limits (Residential SSL)			360	1800	1.1	0.11	1.1	11	110	0.11	240	240	1.1	180	18	24
ECMC Table 915-1 Limits (Protection of Groundwater SSL)			0.55	5.8	0.011	0.24	0.3	2.9	9	0.096	8.9	0.54	0.98	1.3	0.006	0.019
Waste Char	5/30/2024	0.2	<0.020	<0.020	<0.005	<0.020	<0.020	<0.020	<0.020	<0.020	<0.020	<0.020	<0.020	<0.020	<0.002	<0.002
FS-01	06/03/2024	1.5	<0.020	<0.020	<0.005	<0.020	<0.020	<0.020	<0.020	<0.020	<0.020	<0.020	<0.020	<0.020	<0.002	<0.002
FS-02	06/03/2024	1.5	<0.020	<0.020	<0.005	<0.020	<0.020	<0.020	<0.020	<0.020	<0.020	<0.020	<0.020	<0.020	<0.002	<0.002
FS-03	06/03/2024	1.5	<0.020	<0.020	<0.005	<0.020	<0.020	<0.020	<0.020	<0.020	<0.020	<0.020	<0.020	<0.020	<0.002	<0.002
FS-04	06/03/2024	1	<0.020	<0.020	<0.005	<0.020	<0.020	<0.020	<0.020	<0.020	<0.020	<0.020	<0.020	<0.020	<0.002	<0.002
FS-05	06/03/2024	0.5	<0.020	<0.020	<0.005	<0.020	<0.020	<0.020	<0.020	<0.020	<0.020	<0.020	<0.020	<0.020	<0.002	<0.002
FS-06	06/03/2024	0.5	<0.020	<0.020	<0.005	<0.020	<0.020	<0.020	<0.020	<0.020	<0.020	<0.020	<0.020	<0.020	<0.002	<0.002
FS-07	06/03/2024	0.5	<0.020	<0.020	<0.005	<0.020	<0.020	<0.020	<0.020	<0.020	<0.020	<0.020	<0.020	<0.020	<0.002	<0.002
FS-08	06/03/2024	0.5	<0.020	<0.020	<0.005	<0.020	<0.020	<0.020	<0.020	<0.020	<0.020	<0.020	<0.020	<0.020	<0.002	<0.002
FS-09	06/03/2024	0.5	<0.020	<0.020	<0.005	<0.020	<0.020	<0.020	<0.020	<0.020	<0.020	<0.020	<0.020	<0.020	<0.002	<0.002
SS-01	06/03/2024	1	<0.020	<0.020	<0.005	<0.020	<0.020	<0.020	<0.020	<0.020	<0.020	<0.020	<0.020	<0.020	<0.002	<0.002
SS-02	06/03/2024	1	<0.020	<0.020	<0.005	<0.020	<0.020	<0.020	<0.020	<0.020	<0.020	<0.020	<0.020	<0.020	<0.002	<0.002

1. Bold values exceed the ECMC Table 915-1 limit(s)
2. Red & blue highlighted soil analytical values indicate an exceedance of the referenced soil screening level (SSL)
3. * Indicates laboratory minimum detection limit in excess of SSL

NA - Not analyzed

= Source material characterization sample, excavated and transported off site for disposal.
 = Material excavated and transported off site for disposal.

TABLE 3
SUMMARY OF SOIL SUITABILITY FOR RECLAMATION
PDC 69175
GUS LD PAD, ADAMS COUNTY, COLORADO
REM #

Sample ID	Sample Date	Depth (ft)	pH (Standard Units)	EC (mmhos/cm)	SAR (Standard Units)	Boron (mg/L)
ECMC Table 915-1 Soil Suitability Limits			6 - 8.3	<4	<6	2
Waste Char	5/30/2024	0.2	8.27	8.36	37.5	6.59
FS-01	06/03/2024	1.5	8.09	4.72	28.7	<0.0983
FS-02	06/03/2024	1.5	8.08	5.82	26	<0.101
FS-03	06/03/2024	1.5	8.19	3.69	12.7	0.212
FS-04	06/03/2024	1	8.34	2.22	7.91	0.247
FS-05	06/03/2024	0.5	8.51	2.04	14.7	0.279
FS-06	06/03/2024	0.5	8.19	2.65	3.38	0.391
FS-07	06/03/2024	0.5	8.26	4.90	14	0.815
FS-08	06/03/2024	0.5	7.96	11.30	15	1.47
FS-09	06/03/2024	0.5	8.4	2.43	10.5	0.413
SS-01	06/03/2024	1	8.06	8.65	22.7	3.71
SS-02	06/03/2024	1	8.26	2.30	14.6	<0.0996
Maximum Root Background Concentration (0 - 3 ft)						
Average Root Background Concentration (0 - 3 ft)						
Maximum Background Concentration						
Average Background Concentration						

1. Bold faced values exceed the ECMC Table 915-1 limit(s)

2. Blue highlighted soil analytical values indicate a regulatory exceedance

NA - Not analyzed

 = Source material characterization sample, excavated and transported off site for disposal.

 = Material excavated and transported off site for disposal.

TABLE 4
SUMMARY OF METALS IN SOIL CHEMISTRY DATA
PDC 69175
GUS LD PAD, ADAMS COUNTY, COLORADO
REM #

Sample ID	Sample Date	Depth (ft)	Arsenic (mg/kg)	Barium (mg/kg)	Cadmium (mg/kg)	Chromium (VI) (mg/kg)	Copper (mg/kg)	Lead (mg/kg)	Nickel (mg/kg)	Selenium (mg/kg)	Silver (mg/kg)	Zinc (mg/kg)
ECMC Table 915-1 Limits (Residential SSL)			0.68	15000	71	0.3	3100	400	1500	390	390	23000
ECMC Table 915-1 Limits (Protection of Groundwater SSL)			0.29	82	0.38	0.00067	46	14	26	0.26	0.8	370
Waste Char	5/30/2024	0.2	3.28	69.2	<0.200	<0.30	3.91	4.66	3.99	<0.260	<0.0200	14.6
FS-01	06/03/2024	1.5	2.39	27.2	0.211	<0.276	10.5	10.8	9.59	<0.247	<0.0952	<35.2
FS-02	06/03/2024	1.5	4.22	22.4	0.157	<0.374	11.2	10.6	9.28	0.27	<0.0853	40.0
FS-03	06/03/2024	1.5	4.14	52.4	0.311	<0.342	11.2	11.5	13.1	<0.234	<0.0899	42.7
FS-04	06/03/2024	1	5.44	60.7	0.418	<0.368	15.5	27.6	14.1	<0.243	<0.0933	52.7
FS-05	06/03/2024	0.5	3.16	171	0.132	0.568	<9.11	7.17	7.46	<0.237	<0.0911	33.7
FS-06	06/03/2024	0.5	3.31	101	0.125	<0.296	<9.74	7.19	7.48	<0.253	<0.0974	<36.0
FS-07	06/03/2024	0.5	3.26	164	0.117	<0.265	10.7	7.16	7.54	<0.241	<0.0928	34.8
FS-08	06/03/2024	0.5	2.68	60.6	0.0901	<0.282	<8.58	5.58	6.61	<0.223	<0.0858	<31.7
FS-09	06/03/2024	0.5	2.94	149	0.101	<0.354	<9.38	6.41	7.11	<0.244	<0.0938	<34.7
SS-01	06/03/2024	1	3.81	127	0.127	<0.348	9.53	8.06	8.45	<0.243	<0.0935	35.1
SS-02	06/03/2024	1	2.79	25.3	0.173	<0.296	12.1	13.9	8.84	<0.253	<0.0974	37.1
Maximum Root Zone Background Concentration (0 - 3 ft)												
125% Average Root Zone Background Concentration (0 - 3 ft)												
Maximum Background Concentration												
125% Average Background Concentration												

1. Bold values exceed the ECMC Table 915-1 limit(s)

2. Red & blue highlighted soil analytical values indicate an exceedance of the referenced soil screening level (SSL)

* Indicates laboratory minimum detection limit in excess of SSL

NA - Not analyzed

= Source material characterization sample, excavated and transported off site for disposal.
 = Material excavated and transported off site for disposal.

TABLE 5
SUMMARY OF ARSENIC (As) CONCENTRATIONS IN EXCAVATED SOILS CALCULATION (BASED ON REPORTED SPILL VOLUME)
PDC ENERGY INC.
GUS LD PAD
FREMONT PROJECT NO. C024-122

Compare Mass of Arsenic (As) Excavated to Arsenic Released

Arsenic Removed During Excavation	97.65 grams
Arsenic Released Due to Spill	0.000051 grams
Excess Arsenic Removed During Excavation	97.65 grams

Therefore, approximately 1,914,705 times more arsenic were removed via excavation than were released

Calculation of Arsenic Removed During Excavation

Avg. As Concentration in Excav. Soil Samples	Mass of Excavated Soil	Mass of As in Exc. Soil
3.45 mg/kg	28,304 kg	97.65 grams

Mass of excavated soil is: 24 cubic yards x 1.30 ton/CY = 31.2 tons = 28,304 kg

Twelve soil samples from the excavation were analyzed for arsenic; the average concentration was 3.45 mg/kg

Calculation of Arsenic Released Due to Spill

Produced H2O/Oil Release Volume (bbl)	Produced H2O/Oil Volume (L)	As Concentration (ug/L)	As Mass Released (mg)	As Mass Released (g)
0.53	84.26	0.600	(0.600 ug/L x 84.26 L)/1000 0.051	0.000051

Net Volume of Produced Water Released: (.53 bbl)(158.987 L/bbl) = 84.26 L

1 kg/L is weight of water

Arsenic concentration in produced fluids sample was less than the laboratory detection limit of 0.600 ug/L; therefore, use 0.600 ug/L

TABLE 6
SUMMARY OF BARIUM (Ba) CONCENTRATIONS IN EXCAVATED SOILS CALCULATION (BASED ON REPORTED SPILL VOLUME)
PDC ENERGY INC.
GUS LD PAD
FREMONT PROJECT NO. C024-122

Compare Mass of Barium (Ba) Excavated to Barium Released

Barium Removed During Excavation	2,429.05 grams
Barium Released Due to Spill	4.120 grams
Excess Barium Removed During Excavation	2,424.93 grams

Therefore, approximately 589 times more barium were removed via excavation than were released

Calculation of Barium Removed During Excavation

Avg. Ba Concentration in Excav. Soil Samples	Mass of Excavated Soil	Mass of Ba in Exc. Soil
85.82 mg/kg	28,304 kg	2,429.05 grams

Mass of excavated soil is: 24 cubic yards x 1.30 ton/CY = 31.2 tons = 28,304 kg

Twelve soil samples from the excavation were analyzed for barium; the average concentration was 85.82 mg/kg

Calculation of Barium Released Due to Spill

Produced H2O/Oil Release Volume (bbl)	Produced H2O/Oil Volume (L)	Ba Concentration (ug/L)	Ba Mass Released (mg)	Ba Mass Released (g)
0.53	84.26	48900	(48900 ug/L x 84.26 L)/1000 4120.466	4.120

Net Volume of Produced Water Released: (.53 bbl)(158.987 L/bbl) = 84.26 L

1 kg/L is weight of water

Barium concentration in produced fluid sample was 48,900 ug/L (see lab report)

TABLE 7
SUMMARY OF Selenium (Se) CONCENTRATIONS IN EXCAVATED SOILS CALCULATION (BASED ON REPORTED SPILL VOLUME)
PDC ENERGY INC.
GUS LD PAD
FREMONT PROJECT NO. C024-122

Compare Mass of Selenium (Se) Excavated to Selenium Released

Selenium Removed During Excavation	6.96 grams
Selenium Released Due to Spill	0.00008 grams
Excess Selenium Removed During Excavation	6.96 grams

Therefore, approximately 87,000 times more Selenium were removed via excavation than were released

Calculation of Selenium Removed During Excavation

Avg. Se Concentration in Excav. Soil Samples	Mass of Excavated Soil	Mass of Se in Exc. Soil
0.246 mg/kg	28,304 kg	6.96 grams

Mass of excavated soil is: 24 cubic yards x 1.30 ton/CY = 31.2 tons = 28,304 kg

Twelve soil samples from the excavation were analyzed for Selenium; the average concentration was 0.246 mg/kg

Calculation of Selenium Released Due to Spill

Produced H2O/Oil Release Volume (bbl)	Produced H2O/Oil Volume (L)	Se Concentration (ug/L)	Se Mass Released (mg)	Se Mass Released (g)
0.53	84.26311	1.00	(1.00 ug/L x 84.26)/1000 0.08	0.00008

Net Volume of Produced Water Released: (.53 bbl)(158.987 L/bbl) = 84.26 L

1 kg/L is weight of water

Selenium concentration in produced fluids sample was less than the laboratory detection limit of 1.00 ug/L; therefore, use 1.00 ug/L

TABLE 8
SUMMARY OF LEAD (Pb) CONCENTRATIONS IN EXCAVATED SOILS CALCULATION (BASED ON REPORTED SPILL VOLUME)
PDC ENERGY INC.
GUS LD PAD
FREMONT PROJECT NO. C024-122

Compare Mass of Lead (Pb) Excavated to Lead Released

Lead Removed During Excavation	284.46 grams
Lead Released Due to Spill	0.00005 grams
Excess Lead Removed During Excavation	284.46 grams

Therefore, approximately 5,689,000 times more Lead were removed via excavation than were released

Calculation of Lead Removed During Excavation

Avg. Pb Concentration in Excav. Soil Samples	Mass of Excavated Soil	Mass of Pb in Exc. Soil
10.05 mg/kg	28,304 kg	284.46 grams

Mass of excavated soil is: 24 cubic yards x 1.30 ton/CY = 31.2 tons = 28,304 kg

Twelve soil samples from the excavation were analyzed for Lead; the average concentration was 10.05 mg/kg

Calculation of Lead Released Due to Spill

Produced H2O/Oil Release Volume (bbl)	Produced H2O/Oil Volume (L)	Pb Concentration (ug/L)	Pb Mass Released (mg)	Pb Mass Released (g)
0.53	84.26311	0.54	(0.540 ug/L x 84.26 L)/1000 0.05	0.00005

Net Volume of Produced Water Released: (.53 bbl)(158.987 L/bbl) = 84.26 L

1 kg/L is weight of water

Pb concentration in produced fluid sample was 0.540 ug/L (see lab report)

TABLE 9
SUMMARY OF CADMIUM (Cd) CONCENTRATIONS IN EXCAVATED SOILS CALCULATION (BASED ON REPORTED SPILL VOLUME)
PDC ENERGY INC.
GUS LD PAD
FREMONT PROJECT NO. C024-122

Compare Mass of Cadmium (Cd) Excavated to Cadmium Released

Cadmium Removed During Excavation	5.094 grams
Cadmium Released Due to Spill	0.000036 grams
Excess Cadmium Removed During Excavation	5.094 grams

Therefore, approximately 141,127 times more Cadmium were removed via excavation than were released

Calculation of Cadmium Removed During Excavation

Avg. Cd Concentration in Excav. Soil Samples	Mass of Excavated Soil	Mass of Cd in Exc. Soil
0.180 mg/kg	28,304 kg	5.094 grams

Mass of excavated soil is: 24 cubic yards x 1.30 ton/CY = 31.2 tons = 28,304 kg

Twelve soil samples from the excavation were analyzed for Cadmium; the average concentration was 0.180 mg/kg

Calculation of Cadmium Released Due to Spill

Produced H2O/Oil Release Volume (bbl)	Produced H2O/Oil Volume (L)	Cd Concentration (ug/L)	Cd Mass Released (mg)	Cd Mass Released (g)
0.53	84.26	0.430	(0.430 ug/L x 84.26 L)/1000 0.036	0.000036

Net Volume of Produced Water Released: (.53 bbl)(158.987 L/bbl) = 84.26 L

1 kg/L is weight of water

Cadmium concentration in produced fluids sample was 0.430 ug/L

TABLE 10
SUMMARY OF HEXAVALENT CHROMIUM (Cr) CONCENTRATIONS IN EXCAVATED SOILS CALCULATION (BASED ON REPORTED SPILL VOLUME)
PDC ENERGY INC.
GUS LD PAD
FREMONT PROJECT NO. C024-122

Compare Mass of Chromium (Cr) Excavated to Chromium Released

Chromium Removed During Excavation	9.595 grams
Chromium Released Due to Spill	0.000843 grams
Excess Chromium Removed During Excavation	9.594 grams

Therefore, approximately 11,382 times more Chromium were removed via excavation than were released

Calculation of Chromium Removed During Excavation

Avg. Cr Concentration in Excav. Soil Samples	Mass of Excavated Soil	Mass of Cr in Exc. Soil
0.339 mg/kg	28,304 kg	9.595 grams

Mass of excavated soil is: 24 cubic yards x 1.30 ton/CY = 31.2 tons = 28,304 kg

Twelve soil samples from the excavation were analyzed for Chromium; the average concentration was 0.339 mg/kg

Calculation of Chromium Released Due to Spill

Produced H2O/Oil Release Volume (bbl)	Produced H2O/Oil Volume (L)	Cr Concentration (ug/L)	Cr Mass Released (mg)	Cr Mass Released (g)
0.53	84.26	10	(10 ug/L x 84.26 L)/1000 0.843	0.000843

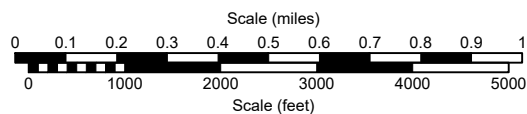
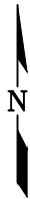
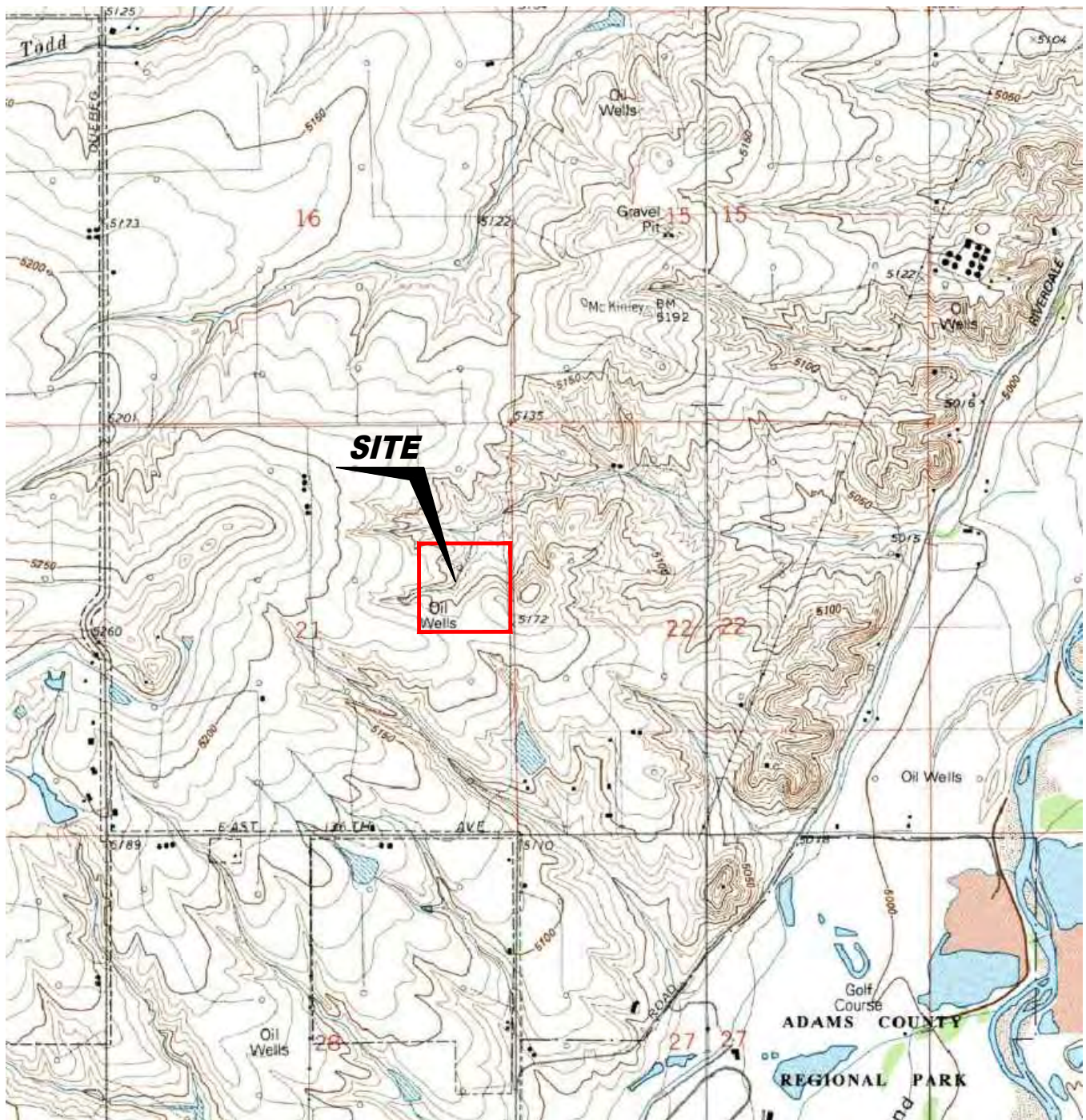
Net Volume of Produced Water Released: (.53 bbl)(158.987 L/bbl) = 84.26 L

1 kg/L is weight of water

Chromium concentration in produced fluids sample was less than the laboratory detection limit of 10 ug/L; therefore, use 10 ug/L

TABLE 11
SUMMARY OF TOTAL RECOVERABLE METALS IN PRODUCED FLUID CHEMISTRY DATA
PDC ENERGY INC.
GUS LD PAD
FREMONT PROJECT NO. C024


Sample ID	Sample Date	Arsenic (ug/L)	Barium (ug/L)	Cadmium (ug/L)	Chromium IV (ug/L)	Copper (ug/L)	Lead (ug/L)	Nickel (ug/L)	Selenium (ug/L)	Silver (ug/L)	Zinc (ug/L)
PW	5/30/2024	<0.600	48900	0.43	<10	5.08	0.54	3.60	<1.00	0.165	122

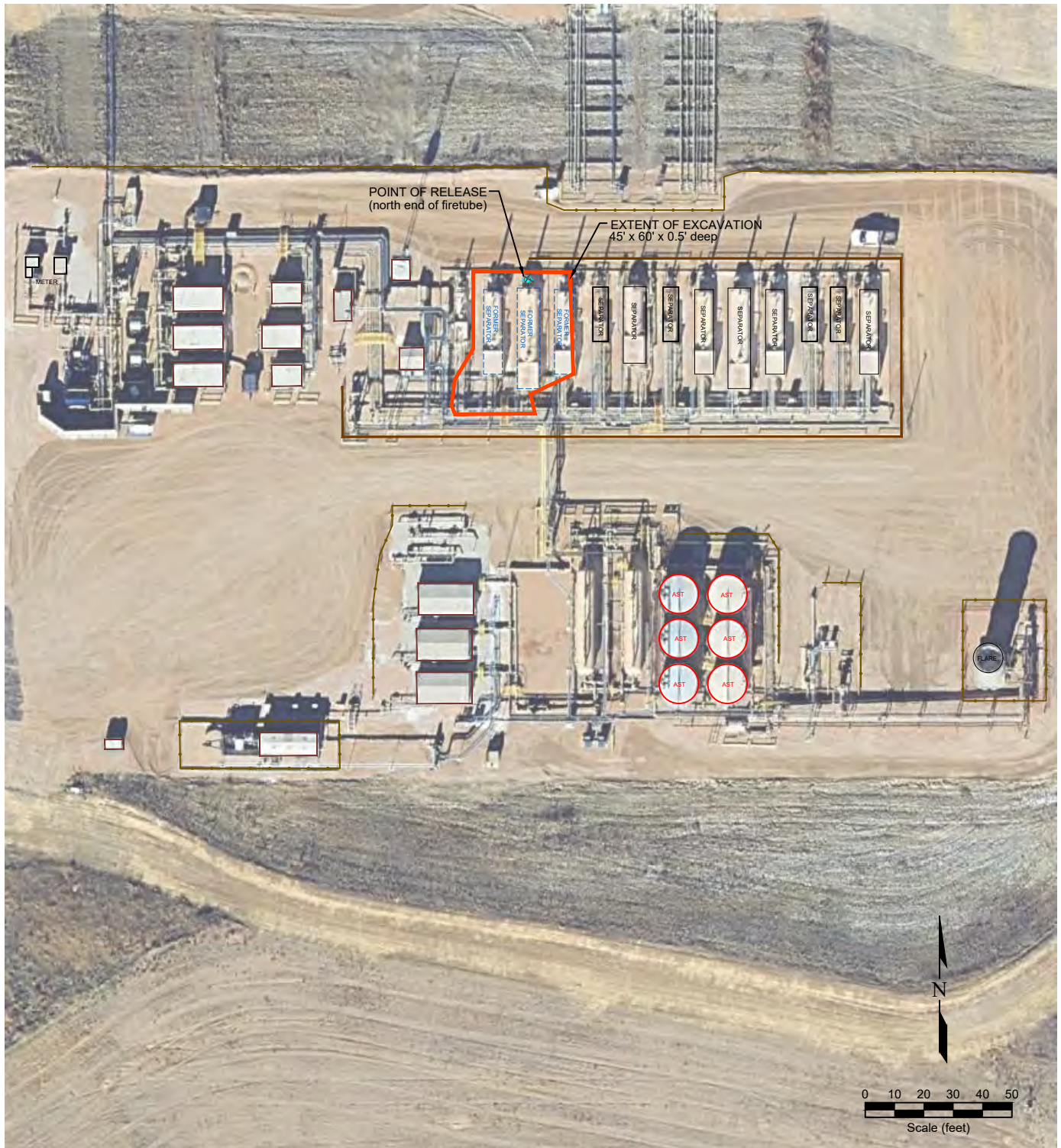


USGS 7.5 MINUTE SERIES (TOPOGRAPHIC)

Figure 1
SITE LOCATION MAP

PDC Energy, Inc. ~ Gus LD Pad
SENE Sec. 21, T1S, R67W, 6th PM
Adams County, Colorado
39.952212°, -104.885496°

Project # C024-122	API #	Facility #	
Date 8/8/24	Remediation #	Filename 24122T	



LEGEND

	POINT OF RELEASE		ABOVE GROUND STORAGE TANK		EXTENT OF EXCAVATION
	FORMER FACILITY		FENCE LINE		CONTAINMENT BERM
	BUILDING		CONTAINMENT WALL		

Figure 2
SITE MAP

PDC Energy, Inc. ~ Gus LD Pad
 SENE Sec. 21, T1S, R67W, 6th PM
 Adams County, Colorado
 39.952212°, -104.885496°

Project No. C024-122	API #	Facility #	
Date 8/8/24	Remediation #	Filename 24122Q	

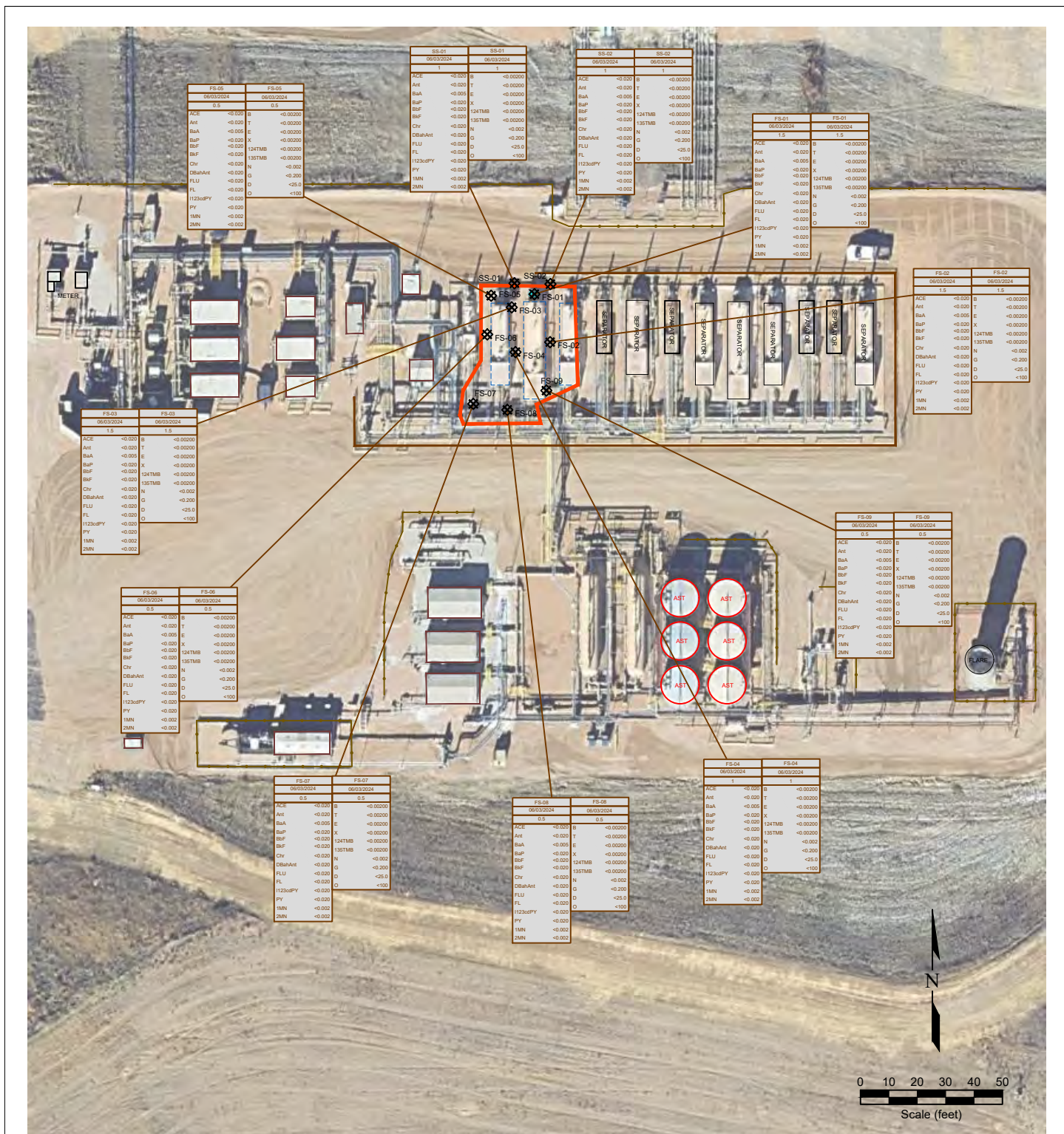
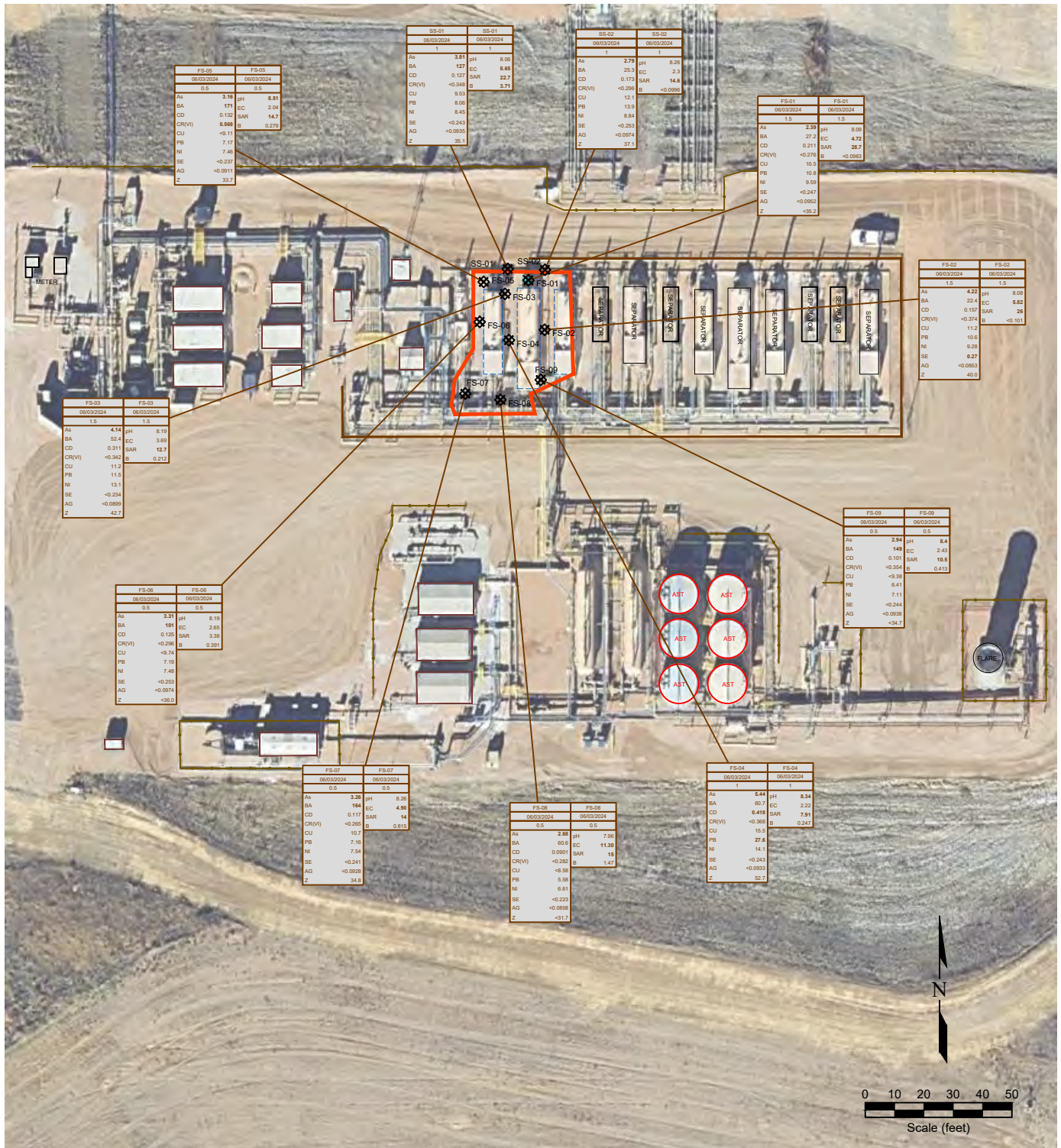


Figure 3
ORGANIC SOIL CHEMISTRY MAP

PDC Energy, Inc. ~ Gus LD Pad
SENE Sec. 21, T1S, R67W, 6th PM
Adams County, Colorado
39.952212°N, -104.885496°W

Project No. C024-122	API #	Facility #
Date 8/8/24	Remediation #	Filename 24122Q





LEGEND

	POINT OF RELEASE		ABOVE GROUND STORAGE TANK		FORMER FACILITY		EXTENT OF EXCAVATION
	SOIL SAMPLE LOCATION		BUILDING		FENCE LINE		CONTAINMENT BERM
			CONTAINMENT WALL				

SAMPLE	SAMPLE ID	SAMPLE	SAMPLE ID
DATE	DATE SAMPLED	DATE	DATE SAMPLED
DEPTH	DEPTH (ft)	DEPTH	DEPTH (ft)
As	<0.01	As	<0.01
BA	<0.01	BA	<0.01
CD	<0.01	CD	<0.01
CR(V)	<0.01	CR(V)	<0.01
CU	<0.01	CU	<0.01
PB	<0.01	PB	<0.01
NI	<0.01	NI	<0.01
SE	<0.01	SE	<0.01
AG	<0.01	AG	<0.01
Z	<0.01	Z	<0.01

Figure 4
METALS AND INORGANIC SOIL CHEMISTRY MAP

PDC Energy, Inc. ~ Gus LD Pad
SENE Sec. 21, T1S, R67W, 6th PM
Adams County, Colorado
39.952212°, -104.885496°

Project No. C024-122	API #	Facility #	
Date 8/8/24	Remediation #	Filename 24122Q	

Summit Scientific

4653 Table Mountain Drive, Golden, Colorado 80403

303.277.9310

June 10, 2024

Paul Henchan
Fremont Environmental
PO Box 1289
Wellington, CO 80549
RE: PDC - Gus LD Pad
Work Order #2405465

Enclosed are the results of analyses for samples received by Summit Scientific on 05/30/24 17:00. If you have any questions concerning this report, please feel free to contact me.

Sincerely,

A handwritten signature in black ink, appearing to read "Natalie Tessier". The signature is fluid and cursive, with the first name being more prominent.

Natalie Tessier For Paul Shrewsbury
President



Fremont Environmental PO Box 1289 Wellington CO, 80549	Project: PDC - Gus LD Pad Project Number: [none] Project Manager: Paul Henchan	Reported: 06/10/24 13:34
--	--	------------------------------------

ANALYTICAL REPORT FOR SAMPLES

Sample ID	Laboratory ID	Matrix	Date Sampled	Date Received
Waste Char	2405465-01	Soil	05/30/24 00:00	05/30/24 17:00

Summit Scientific

S₂

2405465

4653 Table Mountain Drive ♦ Golden, Colorado 80403
303-277-9310

Page 1 of 1

Client: Fremont Environmental Inc.

Project Manager: Paul Henehan

Address:

E-Mail: PDC

City/State/Zip:

Phone:

Project Name: PDC - GUS LD PAD

Sampler Name: HENEHAN

Project Number:

ID	Sample Description	Date Sampled	Time Sampled	# of containers	Preservative				Matrix				Analysis Requested										Special Instructions	
					HCl	HNO ₃	None	Other	Water	Soil	Air-Canister #	Other	GBTEXN+TMBs	DRO,RRO	PAHs	pH, EC, SAR	Boron	915-1 metals	Arsenic	BTEXN + TMBs	TDS, Cl, Su			
1	WASTE CHAR	5/30/24		2			✓			✓													✓	FULL 915-1 SUITE
2																								
3																								
4																								
5																								
6																								
7																								
8																								
9																								
10																								

Relinquished by: <u>PAH/KE</u>	Date/Time: <u>5/30/24 1700</u>	Received by: <u>[Signature]</u>	Date/Time: <u>5/30/24 1700</u>	Turn Around Time (Check): Same Day <input checked="" type="checkbox"/> 72 hours <input type="checkbox"/> 24 hours <input type="checkbox"/> Standard <input type="checkbox"/> 48 hours <input type="checkbox"/>	Notes:
Relinquished by:	Date/Time:	Received by:	Date/Time:	Sample Integrity: Temperature Upon Receipt: <u>10.0</u> Samples Intact: <input checked="" type="checkbox"/> Yes <input type="checkbox"/> No	
Relinquished by:	Date/Time:	Received by:	Date/Time:		

S₂

Sample Receipt Checklist

S2 Work Order# 2405465Client: Fremont Client Project ID: POC/GUS LD PadShipped Via: H.D./P.U./FedEx/UPS/USPS/Other ☐ Airbill #: ☐

<input type="checkbox"/>	<input type="checkbox"/>	<input type="checkbox"/>	<input type="checkbox"/>	<input type="checkbox"/>
--------------------------	--------------------------	--------------------------	--------------------------	--------------------------

Matrix (Check all that apply) Air ☐ Soil ☒ Solid ☐ Water ☐ Other ☐Temp (°C) 16.0 Thermometer # 1

	Yes	No	N/A	Comments (if any)
If samples require cooling, is the temperature < 6°C? ⁽¹⁾ NOTE: If samples are delivered the same day of sampling, this requirement is met if there is evidence that cooling has begun.	<input checked="" type="checkbox"/>	<input type="checkbox"/>	<input type="checkbox"/>	on ice
If custody seals are present, are they intact? ⁽¹⁾	<input checked="" type="checkbox"/>	<input type="checkbox"/>	<input type="checkbox"/>	
Are samples due within 48 hours present?	<input checked="" type="checkbox"/>	<input type="checkbox"/>	<input type="checkbox"/>	Same day
Are water samples with short hold times present? Note the short hold analysis in the comments column - pH, Nitrate/Nitrite, Ferrous Iron (Fe ²⁺), Hexavalent Chromium (Cr ⁶⁺ , Cr VI), COD/BOD, Total Coliform, E. Coli, Total Residual Chlorine (TRC), Dissolved Oxygen	<input type="checkbox"/>	<input checked="" type="checkbox"/>	<input type="checkbox"/>	
Is a chain-of-custody (COC) form present and filled out Completely? ⁽¹⁾	<input checked="" type="checkbox"/>	<input checked="" type="checkbox"/>	<input type="checkbox"/>	no sample times
Is the COC properly relinquished by the client w/ date and time recorded? ⁽¹⁾	<input checked="" type="checkbox"/>	<input type="checkbox"/>	<input type="checkbox"/>	
Were all samples received intact? ⁽¹⁾	<input checked="" type="checkbox"/>	<input type="checkbox"/>	<input type="checkbox"/>	
Was adequate sample volume provided? ⁽¹⁾	<input checked="" type="checkbox"/>	<input type="checkbox"/>	<input type="checkbox"/>	
Does the COC agree with the number and type of sample bottles received? ⁽¹⁾	<input checked="" type="checkbox"/>	<input type="checkbox"/>	<input type="checkbox"/>	
Do the sample IDs on the bottle labels match the COC? ⁽¹⁾	<input checked="" type="checkbox"/>	<input type="checkbox"/>	<input type="checkbox"/>	
For volatiles in water – is there headspace present? If yes, contact client and note in narrative.	<input type="checkbox"/>	<input type="checkbox"/>	<input checked="" type="checkbox"/>	
Are samples preserved that require preservation (excluding cooling)? ⁽¹⁾ Note the type of preservative in the comments column – HCl, H ₂ SO ₄ , NaOH, HNO ₃ , etc.	<input type="checkbox"/>	<input type="checkbox"/>	<input checked="" type="checkbox"/>	
If samples are acid preserved for metals, is the pH ≤ 2? ⁽¹⁾ Record the pH in Comments.	<input type="checkbox"/>	<input type="checkbox"/>	<input checked="" type="checkbox"/>	
If dissolved metals are requested, were samples field filtered?	<input type="checkbox"/>	<input type="checkbox"/>	<input checked="" type="checkbox"/>	

Additional Comments (if any):

⁽¹⁾ If NO, then contact the client before proceeding with analysis and note in case narrative.AS
Custodian Printed Name5/30/24
Date/Time



Fremont Environmental
PO Box 1289
Wellington CO, 80549

Project: PDC - Gus LD Pad

Project Number: [none]
Project Manager: Paul Henchan

Reported:
06/10/24 13:34

Waste Char
2405465-01 (Soil)

Summit Scientific

Volatile Organic Compounds by EPA Method 8260B

Date Sampled: **05/30/24 00:00**

Analyte	Result	Reporting		Dilution	Batch	Prepared	Analyzed	Method	Notes
		Limit	Units						
Benzene	ND	0.20	mg/kg	100	BHE0945	05/30/24	05/30/24	EPA 8260B	
Toluene	0.87	0.50	"	"	"	"	"	"	
Ethylbenzene	ND	0.50	"	"	"	"	"	"	
Xylenes (total)	3.3	1.0	"	"	"	"	"	"	
1,2,4-Trimethylbenzene	6.4	0.50	"	"	"	"	"	"	
1,3,5-Trimethylbenzene	ND	0.50	"	"	"	"	"	"	
Naphthalene	1.3	0.38	"	"	"	"	"	"	
Gasoline Range Hydrocarbons	210	50	"	"	"	"	"	"	

Date Sampled: **05/30/24 00:00**

Analyte	Result	Reporting		Dilution	Batch	Prepared	Analyzed	Method	Notes
		Limit	Units						
Surrogate: 1,2-Dichloroethane-d4	0.0390	97.6 %	50-150		"	"	"	"	
Surrogate: Toluene-d8	0.0402	100 %	50-150		"	"	"	"	
Surrogate: 4-Bromofluorobenzene	0.0415	104 %	50-150		"	"	"	"	

Extractable Petroleum Hydrocarbons by 8015

Date Sampled: **05/30/24 00:00**

Analyte	Result	Reporting		Dilution	Batch	Prepared	Analyzed	Method	Notes
		Limit	Units						
C10-C28 (DRO)	3000	50	mg/kg	1	BHE0948	05/30/24	05/30/24	EPA 8015M	
C28-C36 (ORO)	1000	50	"	"	"	"	"	"	

Date Sampled: **05/30/24 00:00**

Analyte	Result	Reporting		Dilution	Batch	Prepared	Analyzed	Method	Notes
		Limit	Units						
Surrogate: o-Terphenyl	12.2	97.3 %	30-150		"	"	"	"	

PAH by EPA Method 8270D SIM

Summit Scientific

The results in this report apply to the samples analyzed in accordance with the chain of custody document. This analytical report must be reproduced in its entirety.



Fremont Environmental
PO Box 1289
Wellington CO, 80549

Project: PDC - Gus LD Pad
Project Number: [none]
Project Manager: Paul Henchan

Reported:
06/10/24 13:34

Waste Char
2405465-01 (Soil)

Summit Scientific

PAH by EPA Method 8270D SIM

Date Sampled: **05/30/24 00:00**

Analyte	Result	Reporting Limit	Units	Dilution	Batch	Prepared	Analyzed	Method	Notes
Acenaphthene	0.351	0.00500	mg/kg	1	BHE0952	05/31/24	06/01/24	EPA 8270D SIM	E, O-02
Anthracene	ND	0.00500	"	"	"	"	"	"	
Benzo (a) anthracene	ND	0.00500	"	"	"	"	"	"	
Benzo (a) pyrene	ND	0.00500	"	"	"	"	"	"	
Benzo (b) fluoranthene	0.0165	0.00500	"	"	"	"	"	"	
Benzo (k) fluoranthene	ND	0.00500	"	"	"	"	"	"	
Chrysene	0.137	0.00500	"	"	"	"	"	"	
Dibenz (a,h) anthracene	ND	0.00500	"	"	"	"	"	"	
Fluoranthene	0.0179	0.00500	"	"	"	"	"	"	O-02
Fluorene	0.509	0.100	"	20	"	"	06/03/24	"	
Indeno (1,2,3-cd) pyrene	ND	0.00500	"	1	"	"	06/01/24	"	
Pyrene	0.0786	0.00500	"	"	"	"	"	"	
1-Methylnaphthalene	6.90	0.100	"	20	"	"	06/03/24	"	E
2-Methylnaphthalene	8.50	0.100	"	"	"	"	"	"	E

Date Sampled: **05/30/24 00:00**

Analyte	Result	Reporting Limit	Units	Dilution	Batch	Prepared	Analyzed	Method	Notes
Surrogate: 2-Methylnaphthalene-d10	0.0523	157 %	40-150		"	"	06/01/24	"	S-02
Surrogate: Fluoranthene-d10	0.0223	66.9 %	40-150		"	"	"	"	

Total Metals by EPA 6020B Hot Water Soluble Extraction

Date Sampled: **05/30/24 00:00**

Analyte	Result	Reporting Limit	Units	Dilution	Batch	Prepared	Analyzed	Method	Notes
Boron	6.59	2.00	mg/L	1	BHE0959	05/31/24	06/05/24	EPA 6020B	

Total Metals by EPA 6020B

Date Sampled: **05/30/24 00:00**

Analyte	Result	Reporting Limit	Units	Dilution	Batch	Prepared	Analyzed	Method	Notes
---------	--------	-----------------	-------	----------	-------	----------	----------	--------	-------

Summit Scientific

The results in this report apply to the samples analyzed in accordance with the chain of custody document. This analytical report must be reproduced in its entirety.



Fremont Environmental
PO Box 1289
Wellington CO, 80549

Project: PDC - Gus LD Pad
Project Number: [none]
Project Manager: Paul Henchan

Reported:
06/10/24 13:34

Waste Char
2405465-01 (Soil)

Summit Scientific

Total Metals by EPA 6020B

Arsenic	3.28	0.200	mg/kg dry	1	BHE0965	05/31/24	06/05/24	EPA 6020B
Barium	69.2	0.400	"	"	"	"	"	"
Cadmium	ND	0.200	"	"	"	"	"	"
Copper	3.91	0.400	"	"	"	"	"	"
Lead	4.66	0.200	"	"	"	"	"	"
Nickel	3.99	0.400	"	"	"	"	"	"
Silver	ND	0.0200	"	"	"	"	"	"
Zinc	14.6	0.400	"	"	"	"	"	"
Selenium	ND	0.260	"	"	"	"	"	"

Hexavalent Chromium by EPA Method 7196

Date Sampled: **05/30/24 00:00**

Analyte	Result	Reporting Limit	Units	Dilution	Batch	Prepared	Analyzed	Method	Notes
Chromium, Hexavalent	ND	0.30	mg/kg dry	1	BHE0956	05/31/24	05/31/24	EPA 7196A	

Soluble Nutrients by EPA 6020/USDA60 6(2) - Saturated Paste Extraction

Date Sampled: **05/30/24 00:00**

Analyte	Result	Reporting Limit	Units	Dilution	Batch	Prepared	Analyzed	Method	Notes
Calcium	83.4	0.0500	mg/L dry	1	BHE0947	05/30/24	06/01/24	EPA 6020B	
Magnesium	9.84	0.0500	"	"	"	"	"	"	
Sodium	1360	0.0500	"	"	"	"	"	"	

Calculated Analysis

Date Sampled: **05/30/24 00:00**

Analyte	Result	Reporting Limit	Units	Dilution	Batch	Prepared	Analyzed	Method	Notes
Sodium Adsorption Ratio	37.5	0.00100	units	1	BHF0060	06/04/24	06/04/24	Calculation	

Physical Parameters by APHA/ASTM/EPA Methods

Summit Scientific

The results in this report apply to the samples analyzed in accordance with the chain of custody document. This analytical report must be reproduced in its entirety.



Fremont Environmental
PO Box 1289
Wellington CO, 80549

Project: PDC - Gus LD Pad

Project Number: [none]
Project Manager: Paul Henahan

Reported:
06/10/24 13:34

Waste Char
2405465-01 (Soil)

Summit Scientific

Physical Parameters by APHA/ASTM/EPA Methods

Date Sampled: **05/30/24 00:00**

Analyte	Result	Reporting Limit	Units	Dilution	Batch	Prepared	Analyzed	Method	Notes
% Solids	93.0		%	1	BHE0958	05/31/24	05/31/24	Calculation	

Specific Conductance by EPA Method 120.1, Saturated Paste Extraction

Date Sampled: **05/30/24 00:00**

Analyte	Result	Reporting Limit	Units	Dilution	Batch	Prepared	Analyzed	Method	Notes
Specific Conductance (EC)	8.36	0.0100	mmhos/cm	1	BHE0951	05/30/24	05/31/24	EPA 120.1	

Physical Parameters by APHA/ASTM/EPA Methods, Saturated Paste Extraction

Date Sampled: **05/30/24 00:00**

Analyte	Result	Reporting Limit	Units	Dilution	Batch	Prepared	Analyzed	Method	Notes
pH	8.27		pH Units	1	BHE0949	05/30/24	05/31/24	EPA 9045D	

Summit Scientific

The results in this report apply to the samples analyzed in accordance with the chain of custody document. This analytical report must be reproduced in its entirety.



Fremont Environmental
PO Box 1289
Wellington CO, 80549

Project: PDC - Gus LD Pad

Project Number: [none]
Project Manager: Paul Henchan

Reported:
06/10/24 13:34

Volatile Organic Compounds by EPA Method 8260B - Quality Control

Summit Scientific

Analyte	Reporting			Spike	Source		%REC		RPD	
	Result	Limit	Units	Level	Result	%REC	Limits	RPD	Limit	Notes

Batch BHE0945 - EPA 5030 Soil MS

Blank (BHE0945-BLK1)

Prepared: 05/30/24 Analyzed: 05/31/24

Benzene	ND	0.0020	mg/kg							
Toluene	ND	0.0050	"							
Ethylbenzene	ND	0.0050	"							
Xylenes (total)	ND	0.010	"							
1,2,4-Trimethylbenzene	ND	0.0050	"							
1,3,5-Trimethylbenzene	ND	0.0050	"							
Naphthalene	ND	0.0038	"							
Gasoline Range Hydrocarbons	ND	0.50	"							
Surrogate: 1,2-Dichloroethane-d4	0.0413		"	0.0400		103	50-150			
Surrogate: Toluene-d8	0.0395		"	0.0400		98.7	50-150			
Surrogate: 4-Bromofluorobenzene	0.0387		"	0.0400		96.8	50-150			

LCS (BHE0945-BS1)

Prepared: 05/30/24 Analyzed: 05/31/24

Benzene	0.117	0.0020	mg/kg	0.100		117	70-130			
Toluene	0.116	0.0050	"	0.100		116	70-130			
Ethylbenzene	0.112	0.0050	"	0.100		112	70-130			
m,p-Xylene	0.230	0.010	"	0.200		115	70-130			
o-Xylene	0.113	0.0050	"	0.100		113	70-130			
1,2,4-Trimethylbenzene	0.111	0.0050	"	0.100		111	70-130			
1,3,5-Trimethylbenzene	0.110	0.0050	"	0.100		110	70-130			
Naphthalene	0.104	0.0038	"	0.100		104	70-130			
Surrogate: 1,2-Dichloroethane-d4	0.0415		"	0.0400		104	50-150			
Surrogate: Toluene-d8	0.0401		"	0.0400		100	50-150			
Surrogate: 4-Bromofluorobenzene	0.0398		"	0.0400		99.4	50-150			

Matrix Spike (BHE0945-MS1)

Source: 2405463-02

Prepared: 05/30/24 Analyzed: 05/31/24

Benzene	0.101	0.0020	mg/kg	0.100	ND	101	70-130			
Toluene	0.0938	0.0050	"	0.100	ND	93.8	70-130			
Ethylbenzene	0.0867	0.0050	"	0.100	ND	86.7	70-130			
m,p-Xylene	0.178	0.010	"	0.200	ND	89.0	70-130			
o-Xylene	0.0895	0.0050	"	0.100	ND	89.5	70-130			
1,2,4-Trimethylbenzene	0.0844	0.0050	"	0.100	ND	84.4	70-130			
1,3,5-Trimethylbenzene	0.0846	0.0050	"	0.100	ND	84.6	70-130			
Naphthalene	0.0723	0.0038	"	0.100	ND	72.3	70-130			
Surrogate: 1,2-Dichloroethane-d4	0.0419		"	0.0400		105	50-150			
Surrogate: Toluene-d8	0.0400		"	0.0400		100	50-150			
Surrogate: 4-Bromofluorobenzene	0.0401		"	0.0400		100	50-150			

Summit Scientific

The results in this report apply to the samples analyzed in accordance with the chain of custody document. This analytical report must be reproduced in its entirety.



Fremont Environmental
PO Box 1289
Wellington CO, 80549

Project: PDC - Gus LD Pad
Project Number: [none]
Project Manager: Paul Henchan

Reported:
06/10/24 13:34

Volatile Organic Compounds by EPA Method 8260B - Quality Control
Summit Scientific

Analyte	Reporting			Spike	Source		%REC		RPD	
	Result	Limit	Units	Level	Result	%REC	Limits	RPD	Limit	Notes

Batch BHE0945 - EPA 5030 Soil MS

Matrix Spike Dup (BHE0945-MSD1)	Source: 2405463-02			Prepared: 05/30/24 Analyzed: 05/31/24						
Benzene	0.105	0.0020	mg/kg	0.100	ND	105	70-130	4.46	30	
Toluene	0.0976	0.0050	"	0.100	ND	97.6	70-130	3.98	30	
Ethylbenzene	0.0897	0.0050	"	0.100	ND	89.7	70-130	3.43	30	
m,p-Xylene	0.183	0.010	"	0.200	ND	91.4	70-130	2.68	30	
o-Xylene	0.0920	0.0050	"	0.100	ND	92.0	70-130	2.71	30	
1,2,4-Trimethylbenzene	0.0844	0.0050	"	0.100	ND	84.4	70-130	0.00	30	
1,3,5-Trimethylbenzene	0.0846	0.0050	"	0.100	ND	84.6	70-130	0.0709	30	
Naphthalene	0.0718	0.0038	"	0.100	ND	71.8	70-130	0.583	30	
Surrogate: 1,2-Dichloroethane-d4	0.0420		"	0.0400		105	50-150			
Surrogate: Toluene-d8	0.0403		"	0.0400		101	50-150			
Surrogate: 4-Bromofluorobenzene	0.0391		"	0.0400		97.7	50-150			

Summit Scientific

The results in this report apply to the samples analyzed in accordance with the chain of custody document. This analytical report must be reproduced in its entirety.



Fremont Environmental
PO Box 1289
Wellington CO, 80549

Project: PDC - Gus LD Pad

Project Number: [none]
Project Manager: Paul Henchan

Reported:
06/10/24 13:34

Extractable Petroleum Hydrocarbons by 8015 - Quality Control
Summit Scientific

Analyte	Reporting			Spike	Source		%REC		RPD	
	Result	Limit	Units	Level	Result	%REC	Limits	RPD	Limit	Notes

Batch BHE0948 - EPA 3550A

Blank (BHE0948-BLK1)

Prepared: 05/30/24 Analyzed: 05/31/24

C10-C28 (DRO)	ND	50	mg/kg							
C28-C36 (ORO)	ND	50	"							
Surrogate: o-Terphenyl	10.9		"	12.5		87.0	30-150			

LCS (BHE0948-BS1)

Prepared: 05/30/24 Analyzed: 05/31/24

C10-C28 (DRO)	407	50	mg/kg	500		81.3	70-130			
Surrogate: o-Terphenyl	8.43		"	12.5		67.4	30-150			

Matrix Spike (BHE0948-MS1)

Source: 2405463-02

Prepared: 05/30/24 Analyzed: 05/31/24

C10-C28 (DRO)	393	50	mg/kg	500	24.1	73.8	70-130			
Surrogate: o-Terphenyl	6.50		"	12.5		52.0	30-150			

Matrix Spike Dup (BHE0948-MSD1)

Source: 2405463-02

Prepared: 05/30/24 Analyzed: 05/31/24

C10-C28 (DRO)	427	50	mg/kg	500	24.1	80.6	70-130	8.27	20	
Surrogate: o-Terphenyl	7.25		"	12.5		58.0	30-150			

Summit Scientific

The results in this report apply to the samples analyzed in accordance with the chain of custody document. This analytical report must be reproduced in its entirety.



Fremont Environmental
PO Box 1289
Wellington CO, 80549

Project: PDC - Gus LD Pad
Project Number: [none]
Project Manager: Paul Henchan

Reported:
06/10/24 13:34

PAH by EPA Method 8270D SIM - Quality Control

Summit Scientific

Reporting				Spike	Source	%REC			RPD	
Analyte	Result	Limit	Units	Level	Result	%REC	Limits	RPD	Limit	Notes

Batch BHE0952 - EPA 5030 Soil MS

Blank (BHE0952-BLK1)

Prepared: 05/31/24 Analyzed: 06/01/24

Acenaphthene	ND	0.00500	mg/kg							
Anthracene	ND	0.00500	"							
Benzo (a) anthracene	ND	0.00500	"							
Benzo (a) pyrene	ND	0.00500	"							
Benzo (b) fluoranthene	ND	0.00500	"							
Benzo (k) fluoranthene	ND	0.00500	"							
Chrysene	ND	0.00500	"							
Dibenz (a,h) anthracene	ND	0.00500	"							
Fluoranthene	ND	0.00500	"							
Fluorene	ND	0.00500	"							
Indeno (1,2,3-cd) pyrene	ND	0.00500	"							
Pyrene	ND	0.00500	"							
1-Methylnaphthalene	ND	0.00500	"							
2-Methylnaphthalene	ND	0.00500	"							
Surrogate: 2-Methylnaphthalene-d10	0.0260		"	0.0333		78.1	40-150			
Surrogate: Fluoranthene-d10	0.0279		"	0.0333		83.7	40-150			

LCS (BHE0952-BS1)

Prepared: 05/31/24 Analyzed: 06/01/24

Acenaphthene	0.0262	0.00500	mg/kg	0.0333		78.5	31-137			
Anthracene	0.0266	0.00500	"	0.0333		79.8	30-120			
Benzo (a) anthracene	0.0306	0.00500	"	0.0333		91.9	30-120			
Benzo (a) pyrene	0.0267	0.00500	"	0.0333		80.0	30-120			
Benzo (b) fluoranthene	0.0297	0.00500	"	0.0333		89.0	30-120			
Benzo (k) fluoranthene	0.0271	0.00500	"	0.0333		81.3	30-120			
Chrysene	0.0283	0.00500	"	0.0333		84.9	30-120			
Dibenz (a,h) anthracene	0.0235	0.00500	"	0.0333		70.6	30-120			
Fluoranthene	0.0268	0.00500	"	0.0333		80.5	30-120			
Fluorene	0.0288	0.00500	"	0.0333		86.3	30-120			
Indeno (1,2,3-cd) pyrene	0.0178	0.00500	"	0.0333		53.5	30-120			
Pyrene	0.0318	0.00500	"	0.0333		95.5	35-142			
1-Methylnaphthalene	0.0293	0.00500	"	0.0333		87.8	35-142			
2-Methylnaphthalene	0.0373	0.00500	"	0.0333		112	35-142			
Surrogate: 2-Methylnaphthalene-d10	0.0216		"	0.0333		64.7	40-150			
Surrogate: Fluoranthene-d10	0.0246		"	0.0333		73.9	40-150			

Summit Scientific

The results in this report apply to the samples analyzed in accordance with the chain of custody document. This analytical report must be reproduced in its entirety.



Fremont Environmental
PO Box 1289
Wellington CO, 80549

Project: PDC - Gus LD Pad

Project Number: [none]
Project Manager: Paul Henchan

Reported:
06/10/24 13:34

PAH by EPA Method 8270D SIM - Quality Control

Summit Scientific

Analyte	Reporting			Spike		Source		%REC		RPD	
	Result	Limit	Units	Level		Result		%REC	Limits	RPD	Notes

Batch BHE0952 - EPA 5030 Soil MS

Matrix Spike (BHE0952-MS1)

Source: 2405447-01

Prepared: 05/31/24 Analyzed: 06/01/24

Acenaphthene	0.0218	0.00500	mg/kg	0.0333	ND	65.3	31-137		
Anthracene	0.0198	0.00500	"	0.0333	ND	59.3	30-120		
Benzo (a) anthracene	0.0225	0.00500	"	0.0333	ND	67.4	30-120		
Benzo (a) pyrene	0.0205	0.00500	"	0.0333	ND	61.4	30-120		
Benzo (b) fluoranthene	0.0244	0.00500	"	0.0333	ND	73.3	30-120		
Benzo (k) fluoranthene	0.0222	0.00500	"	0.0333	ND	66.7	30-120		
Chrysene	0.0217	0.00500	"	0.0333	ND	65.0	30-120		
Dibenz (a,h) anthracene	0.0174	0.00500	"	0.0333	ND	52.1	30-120		
Fluoranthene	0.0197	0.00500	"	0.0333	ND	59.2	30-120		
Fluorene	0.0215	0.00500	"	0.0333	ND	64.5	30-120		
Indeno (1,2,3-cd) pyrene	0.0199	0.00500	"	0.0333	ND	59.6	30-120		
Pyrene	0.0419	0.00500	"	0.0333	ND	126	35-142		
1-Methylnaphthalene	0.0232	0.00500	"	0.0333	ND	69.5	15-130		
2-Methylnaphthalene	0.0259	0.00500	"	0.0333	ND	77.6	15-130		
Surrogate: 2-Methylnaphthalene-d10	0.0166		"	0.0333		49.7	40-150		
Surrogate: Fluoranthene-d10	0.0179		"	0.0333		53.7	40-150		

Matrix Spike Dup (BHE0952-MSD1)

Source: 2405447-01

Prepared: 05/31/24 Analyzed: 06/01/24

Acenaphthene	0.0213	0.00500	mg/kg	0.0333	ND	63.8	31-137	2.29	30
Anthracene	0.0196	0.00500	"	0.0333	ND	58.9	30-120	0.746	30
Benzo (a) anthracene	0.0222	0.00500	"	0.0333	ND	66.6	30-120	1.24	30
Benzo (a) pyrene	0.0192	0.00500	"	0.0333	ND	57.7	30-120	6.35	30
Benzo (b) fluoranthene	0.0214	0.00500	"	0.0333	ND	64.1	30-120	13.3	30
Benzo (k) fluoranthene	0.0196	0.00500	"	0.0333	ND	58.8	30-120	12.6	30
Chrysene	0.0204	0.00500	"	0.0333	ND	61.3	30-120	5.80	30
Dibenz (a,h) anthracene	0.0158	0.00500	"	0.0333	ND	47.4	30-120	9.43	30
Fluoranthene	0.0197	0.00500	"	0.0333	ND	59.1	30-120	0.127	30
Fluorene	0.0220	0.00500	"	0.0333	ND	66.0	30-120	2.38	30
Indeno (1,2,3-cd) pyrene	0.0191	0.00500	"	0.0333	ND	57.4	30-120	3.79	30
Pyrene	0.0333	0.00500	"	0.0333	ND	99.9	35-142	22.9	30
1-Methylnaphthalene	0.0229	0.00500	"	0.0333	ND	68.8	15-130	0.957	50
2-Methylnaphthalene	0.0272	0.00500	"	0.0333	ND	81.6	15-130	4.97	50
Surrogate: 2-Methylnaphthalene-d10	0.0183		"	0.0333		54.9	40-150		
Surrogate: Fluoranthene-d10	0.0178		"	0.0333		53.4	40-150		

Summit Scientific

The results in this report apply to the samples analyzed in accordance with the chain of custody document. This analytical report must be reproduced in its entirety.



Fremont Environmental
PO Box 1289
Wellington CO, 80549

Project: PDC - Gus LD Pad

Project Number: [none]
Project Manager: Paul Henchan

Reported:
06/10/24 13:34

Total Metals by EPA 6020B Hot Water Soluble Extraction - Quality Control
Summit Scientific

Analyte	Reporting			Spike	Source		%REC		RPD	
	Result	Limit	Units	Level	Result	%REC	Limits	RPD	Limit	Notes

Batch BHE0959 - EPA 3050B

Blank (BHE0959-BLK1)

Prepared: 05/31/24 Analyzed: 06/05/24

Boron ND 2.00 mg/L

LCS (BHE0959-BS1)

Prepared: 05/31/24 Analyzed: 06/05/24

Boron 4.91 2.00 mg/L 5.00 98.2 80-120

Duplicate (BHE0959-DUP1)

Source: 2405464-01

Prepared: 05/31/24 Analyzed: 06/05/24

Boron 0.175 2.00 mg/L 0.124 33.7 20 QR-01

Matrix Spike (BHE0959-MS1)

Source: 2405464-01

Prepared: 05/31/24 Analyzed: 06/05/24

Boron 5.11 2.00 mg/L 5.02 0.124 99.4 75-125

Matrix Spike Dup (BHE0959-MSD1)

Source: 2405464-01

Prepared: 05/31/24 Analyzed: 06/05/24

Boron 5.45 2.00 mg/L 5.02 0.124 106 75-125 6.40 25

Summit Scientific

The results in this report apply to the samples analyzed in accordance with the chain of custody document. This analytical report must be reproduced in its entirety.



Fremont Environmental
PO Box 1289
Wellington CO, 80549

Project: PDC - Gus LD Pad
Project Number: [none]
Project Manager: Paul Henchan

Reported:
06/10/24 13:34

Total Metals by EPA 6020B - Quality Control
Summit Scientific

Analyte	Reporting			Spike Level	Source		%REC		RPD	
	Result	Limit	Units		Result	%REC	Limits	RPD	Limit	Notes

Batch BHE0965 - EPA 3050B

Blank (BHE0965-BLK1)

Prepared: 05/31/24 Analyzed: 06/05/24

Arsenic	ND	0.200	mg/kg wet
Barium	ND	0.400	"
Cadmium	ND	0.200	"
Copper	ND	0.400	"
Lead	ND	0.200	"
Nickel	ND	0.400	"
Silver	ND	0.0200	"
Zinc	ND	0.400	"
Selenium	ND	0.260	"

LCS (BHE0965-BS1)

Prepared: 05/31/24 Analyzed: 06/05/24

Arsenic	39.4	0.200	mg/kg wet	39.4	100	80-120
Barium	39.6	0.400	"	39.4	101	80-120
Cadmium	1.94	0.200	"	1.97	98.6	80-120
Copper	40.2	0.400	"	39.4	102	80-120
Lead	19.7	0.200	"	19.7	99.8	80-120
Nickel	40.3	0.400	"	39.4	102	80-120
Silver	1.95	0.0200	"	1.97	99.1	80-120
Zinc	40.2	0.400	"	39.4	102	80-120
Selenium	4.17	0.260	"	3.94	106	80-120

Duplicate (BHE0965-DUP1)

Source: 2405460-05

Prepared: 05/31/24 Analyzed: 06/07/24

Arsenic	10.1	0.200	mg/kg dry	10.0	0.778	20
Barium	113	0.400	"	113	0.778	20
Cadmium	0.379	0.200	"	0.376	0.778	20
Copper	15.3	0.400	"	15.2	0.778	20
Lead	13.1	0.200	"	13.0	0.778	20
Nickel	12.7	0.400	"	12.6	0.778	20
Silver	0.0571	0.0200	"	0.0567	0.778	20
Zinc	54.8	0.400	"	54.4	0.778	20
Selenium	0.704	0.260	"	0.698	0.778	20

Summit Scientific

The results in this report apply to the samples analyzed in accordance with the chain of custody document. This analytical report must be reproduced in its entirety.



Fremont Environmental
PO Box 1289
Wellington CO, 80549

Project: PDC - Gus LD Pad

Project Number: [none]
Project Manager: Paul Henchan

Reported:
06/10/24 13:34

Total Metals by EPA 6020B - Quality Control

Summit Scientific

Analyte	Reporting			Spike	Source		%REC		RPD	
	Result	Limit	Units	Level	Result	%REC	Limits	RPD	Limit	Notes

Batch BHE0965 - EPA 3050B

Matrix Spike (BHE0965-MS1)		Source: 2405460-05			Prepared: 05/31/24 Analyzed: 06/06/24					
Arsenic	61.4	0.200	mg/kg dry	45.2	10.0	114	75-125			
Barium	119	0.400	"	45.2	113	13.1	75-125			QM-07
Cadmium	2.35	0.200	"	2.26	0.376	87.4	75-125			
Copper	59.1	0.400	"	45.2	15.2	97.2	75-125			
Lead	32.9	0.200	"	22.6	13.0	88.1	75-125			
Nickel	58.0	0.400	"	45.2	12.6	100	75-125			
Silver	2.17	0.0200	"	2.26	0.0567	93.4	75-125			
Zinc	103	0.400	"	45.2	54.4	107	75-125			
Selenium	4.98	0.260	"	4.52	0.698	94.8	75-125			

Matrix Spike Dup (BHE0965-MSD1)		Source: 2405460-05			Prepared: 05/31/24 Analyzed: 06/06/24					
Arsenic	62.6	0.200	mg/kg dry	45.2	10.0	116	75-125	1.94	25	
Barium	124	0.400	"	45.2	113	25.4	75-125	4.57	25	QM-07
Cadmium	2.49	0.200	"	2.26	0.376	93.5	75-125	5.75	25	
Copper	60.1	0.400	"	45.2	15.2	99.3	75-125	1.62	25	
Lead	34.8	0.200	"	22.6	13.0	96.5	75-125	5.59	25	
Nickel	59.2	0.400	"	45.2	12.6	103	75-125	2.11	25	
Silver	2.29	0.0200	"	2.26	0.0567	98.7	75-125	5.36	25	
Zinc	103	0.400	"	45.2	54.4	107	75-125	0.179	25	
Selenium	5.21	0.260	"	4.52	0.698	99.7	75-125	4.41	25	

Post Spike (BHE0965-PS1)		Source: 2405460-05			Prepared: 05/31/24 Analyzed: 06/06/24					
Arsenic	128		ug/l	100	20.8	107	75-125			
Barium	332		"	100	234	97.3	75-125			
Cadmium	6.30		"	5.00	0.783	110	75-125			
Copper	58.0		"	100	31.6	26.4	75-125			QM-07
Lead	78.2		"	50.0	27.1	102	75-125			
Nickel	56.3		"	100	26.3	30.0	75-125			QM-07
Silver	5.46		"	5.00	0.118	107	75-125			
Zinc	93.8		"	100	113	NR	75-125			QM-07
Selenium	13.1		"	10.0	1.45	117	75-125			

Summit Scientific

The results in this report apply to the samples analyzed in accordance with the chain of custody document. This analytical report must be reproduced in its entirety.



Fremont Environmental
PO Box 1289
Wellington CO, 80549

Project: PDC - Gus LD Pad

Project Number: [none]
Project Manager: Paul Henehan

Reported:
06/10/24 13:34

Hexavalent Chromium by EPA Method 7196 - Quality Control
Summit Scientific

Analyte	Reporting			Spike	Source		%REC		RPD	
	Result	Limit	Units	Level	Result	%REC	Limits	RPD	Limit	Notes

Batch BHE0956 - 3060A Mod

Blank (BHE0956-BLK1)

Prepared & Analyzed: 05/31/24

Chromium, Hexavalent ND 0.30 mg/kg wet

LCS (BHE0956-BS1)

Prepared & Analyzed: 05/31/24

Chromium, Hexavalent 25.7 0.30 mg/kg wet 25.0 103 80-120

Duplicate (BHE0956-DUP1)

Source: 2405465-01

Prepared & Analyzed: 05/31/24

Chromium, Hexavalent ND 0.30 mg/kg dry ND 20

Matrix Spike (BHE0956-MS1)

Source: 2405465-01

Prepared & Analyzed: 05/31/24

Chromium, Hexavalent 27.4 0.30 mg/kg dry 26.3 ND 104 75-125

Matrix Spike Dup (BHE0956-MSD1)

Source: 2405465-01

Prepared & Analyzed: 05/31/24

Chromium, Hexavalent 28.0 0.30 mg/kg dry 27.4 ND 102 75-125 2.06 20

Summit Scientific

The results in this report apply to the samples analyzed in accordance with the chain of custody document. This analytical report must be reproduced in its entirety.



Fremont Environmental
PO Box 1289
Wellington CO, 80549

Project: PDC - Gus LD Pad

Project Number: [none]
Project Manager: Paul Henchan

Reported:
06/10/24 13:34

Soluble Nutrients by EPA 6020/USDA60 6(2) - Saturated Paste Extraction - Quality Control
Summit Scientific

Analyte	Result	Reporting		Spike Level	Source		%REC		RPD	
		Limit	Units		Result	%REC	Limits	RPD	Limit	Notes

Batch BHE0947 - General Preparation

Blank (BHE0947-BLK1)

Prepared: 05/30/24 Analyzed: 06/01/24

Calcium	ND	0.0500	mg/L wet
Magnesium	ND	0.0500	"
Sodium	ND	0.0500	"

LCS (BHE0947-BS1)

Prepared: 05/30/24 Analyzed: 06/01/24

Calcium	5.02	0.0500	mg/L wet	5.00	100	70-130
Magnesium	4.91	0.0500	"	5.00	98.2	70-130
Sodium	4.62	0.0500	"	5.00	92.3	70-130

Summit Scientific

The results in this report apply to the samples analyzed in accordance with the chain of custody document. This analytical report must be reproduced in its entirety.



Fremont Environmental
PO Box 1289
Wellington CO, 80549

Project: PDC - Gus LD Pad

Project Number: [none]
Project Manager: Paul Henchan

Reported:
06/10/24 13:34

Physical Parameters by APHA/ASTM/EPA Methods - Quality Control
Summit Scientific

Analyte	Result	Reporting		Spike Level	Source		%REC		RPD	
		Limit	Units		Result	%REC	Limits	RPD	Limit	Notes

Batch BHE0958 - General Preparation

Duplicate (BHE0958-DUP1)			Source: 2405465-01			Prepared & Analyzed: 05/31/24				
% Solids	92.4		%			93.0		0.654	20	

Summit Scientific

The results in this report apply to the samples analyzed in accordance with the chain of custody document. This analytical report must be reproduced in its entirety.



Fremont Environmental
PO Box 1289
Wellington CO, 80549

Project: PDC - Gus LD Pad

Project Number: [none]
Project Manager: Paul Henchan

Reported:
06/10/24 13:34

Specific Conductance by EPA Method 120.1, Saturated Paste Extraction - Quality Control
Summit Scientific

Analyte	Result	Reporting		Spike Level	Source		%REC		RPD	
		Limit	Units		Result	%REC	Limits	RPD	Limit	Notes

Batch BHE0951 - General Preparation

Blank (BHE0951-BLK1)

Prepared: 05/30/24 Analyzed: 05/31/24

Specific Conductance (EC) ND 0.0100 mmhos/cm

LCS (BHE0951-BS1)

Prepared: 05/30/24 Analyzed: 05/31/24

Specific Conductance (EC) 0.156 0.0100 mmhos/cm 0.150 104 95-105

Duplicate (BHE0951-DUP1)

Source: 2405465-01

Prepared: 05/30/24 Analyzed: 05/31/24

Specific Conductance (EC) 8.24 0.0100 mmhos/cm 8.36 1.36 20

Summit Scientific

The results in this report apply to the samples analyzed in accordance with the chain of custody document. This analytical report must be reproduced in its entirety.



Fremont Environmental
PO Box 1289
Wellington CO, 80549

Project: PDC - Gus LD Pad

Project Number: [none]
Project Manager: Paul Henchan

Reported:
06/10/24 13:34

Physical Parameters by APHA/ASTM/EPA Methods, Saturated Paste Extraction - Quality Control
Summit Scientific

Analyte	Result	Reporting		Spike Level	Source Result	%REC		RPD		Notes
		Limit	Units			%REC	Limits	RPD	Limit	

Batch BHE0949 - General Preparation

LCS (BHE0949-BS1)

Prepared: 05/30/24 Analyzed: 05/31/24

pH	9.13	pH Units	9.18	99.5	95-105
----	------	----------	------	------	--------

Duplicate (BHE0949-DUP1)

Source: 2405465-01

Prepared: 05/30/24 Analyzed: 05/31/24

pH	8.26	pH Units	8.27	0.121	20
----	------	----------	------	-------	----

Summit Scientific

The results in this report apply to the samples analyzed in accordance with the chain of custody document. This analytical report must be reproduced in its entirety.



Fremont Environmental
PO Box 1289
Wellington CO, 80549

Project: PDC - Gus LD Pad

Project Number: [none]
Project Manager: Paul Henchan

Reported:
06/10/24 13:34

Notes and Definitions

S-02	The surrogate recovery for this sample cannot be accurately quantified due to interference from coeluting organic compounds present in the sample extract.
QR-01	Analyses are not controlled on RPD values from sample concentrations less than 10 times the reporting limit. QC batch accepted based on LCS and/or LCSD QC results.
QM-07	The spike recovery was outside acceptance limits for the MS and/or MSD. The batch was accepted based on acceptable LCS/LCSD recovery.
O-02	Due to matrix interference, the sample cannot be accurately quantitated. The reported result is qualitative.
E	The concentration indicated for this analyte is an estimated value above the calibration range of the instrument.
DET	Analyte DETECTED
ND	Analyte NOT DETECTED at or above the reporting limit
NR	Not Reported
dry	Sample results reported on a dry weight basis
RPD	Relative Percent Difference



June 25, 2024

Fremont Environmental

Paul Henehan

8305 6th St, PO Box 1289

Wellington CO 80549

Project Name - PDC - Gus LD Pad

Project Number - [none]

Attached are your analytical results for PDC - Gus LD Pad received by Origins Laboratory, Inc. June 03, 2024. This project is associated with Origins project number Y406041-01.

The analytical results in the following report were analyzed under the guidelines of EPA Methods. These methods are identified as follows; "SW" are defined in SW-846, "EPA" are defined in 40CFR part 136 and "SM" are defined in the most current revision of Standard Methods For the Examination of Water and Wastewater.

The analytical results apply specifically to the samples and analyses specified per the attached Chain of Custody. As such, this report shall not be reproduced except in full, without the written approval of Origin's laboratory.

Unless otherwise noted, the analytical results for all soil samples are reported on a wet weight basis. All analytical analyses were performed under NELAP guidelines unless noted by a data qualifier.

Any holding time exceedances, deviations from the method specifications or deviations from Origins Laboratory's Standard Operating Procedures are outlined in the case narrative.

Thank you for selecting Origins for your analytical needs. Please contact us with any questions concerning this report, or if we can help with anything at all.

Origins Laboratory, Inc.
303.433.1322
o-squad@oelabinc.com



1725 Elk Place, Denver, CO 80211 | Phone: 303.433.1322 | Fax: 303.265.9645

Fremont Environmental
8305 6th St, PO Box 1289
Wellington CO 80549

Paul Henehan
Project Number: [none]
Project: PDC - Gus LD Pad

CROSS REFERENCE REPORT

Sample ID	Laboratory ID	Matrix	Date Sampled	Date Received
FS-01	Y406041-01	Soil	June 3, 2024 0:00	06/03/2024 17:18
FS-02	Y406041-02	Soil	June 3, 2024 0:00	06/03/2024 17:18
FS-03	Y406041-03	Soil	June 3, 2024 0:00	06/03/2024 17:18
FS-04	Y406041-04	Soil	June 3, 2024 0:00	06/03/2024 17:18
FS-05	Y406041-05	Soil	June 3, 2024 0:00	06/03/2024 17:18
FS-06	Y406041-06	Soil	June 3, 2024 0:00	06/03/2024 17:18
FS-07	Y406041-07	Soil	June 3, 2024 0:00	06/03/2024 17:18
FS-08	Y406041-08	Soil	June 3, 2024 0:00	06/03/2024 17:18
FS-09	Y406041-09	Soil	June 3, 2024 0:00	06/03/2024 17:18
SS-01	Y406041-10	Soil	June 3, 2024 0:00	06/03/2024 17:18
SS-02	Y406041-11	Soil	June 3, 2024 0:00	06/03/2024 17:18

Origins Laboratory, Inc.



The results in this report apply to the samples analyzed in accordance with the chain of custody document. This analytical report must be reproduced in its entirety.

Fremont Environmental
8305 6th St, PO Box 1289
Wellington CO 80549

Paul Henehan
Project Number: [none]
Project: PDC - Gus LD Pad

1725 Elk Place | Denver, CO 80211 | Phone: 303.433.1322 | Fax: 303.265.9645

ORIGINS
LABORATORY, INC

44060041

www.originslaboratory.com

page 1 of 2

Client: Fremont / PDC
Address: _____
Telephone Number: 303.956-8714
Email Address: _____
Project Manager: HENEHAN
Project Name: GUS LD PAD
Project Number: _____
Samples Collected By: HENEHAN

Sample ID Description	Date Sampled	Time Sampled	# of Containers	Preservative			Matrix			Analysis	Sample Instructions
				Unpreserved	HCl	HNO ₃	Other	Groundwater	Soil		
FS-01	6/3/24		2								
FS-02											
FS-03											
FS-04											
FS-05											
FS-06											
FS-07											
FS-08											
FS-09											
FS-10 SS-01											
Relinquished By: <u>[Signature]</u> Date: _____				Received By: <u>[Signature]</u> Date: <u>06/03/24</u> Time: <u>16:00</u>				Inauguration Time: <u>Same Day</u>			
Relinquished By: <u>[Signature]</u> Date: <u>06/03/24</u> Time: <u>17:18</u>				Received By: <u>[Signature]</u> Date: <u>06/03/24</u> Time: <u>17:18</u>				Standard <input type="checkbox"/> 48 Hr <input type="checkbox"/> 72 Hr <input type="checkbox"/>			

Temp Received: 10.5°C

Date Results Needed

Origins Laboratory, Inc.

[Signature]

The results in this report apply to the samples analyzed in accordance with the chain of custody document. This analytical report must be reproduced in its entirety.

Fremont Environmental
8305 6th St, PO Box 1289
Wellington CO 80549

Paul Henehan
Project Number: [none]
Project: PDC - Gus LD Pad

Origins Laboratory

F-012207-01-R1
Effective Date: 01/09/12

Sample Receipt Checklist

Origins Work Order: 44060041

Client: Fremont

Client Project ID: Gus LD

Checklist Completed by: EHO

Shipped Via: HO

Date/time completed: 6/13/12

(UPS, FedEx, Hand Delivered, Pick-up, etc.)

Airbill #: N/A

Matrix(s) Received: (Check all that apply): Soil/Solid Water Other:

Cooler Number/Temperature: 1 10.5 °C 1 °C 1 °C (Describe)

Thermometer ID: 7005

Requirement Description	Yes	No	N/A	Comments (if any)
If samples require cooling, was the temperature between 0°C to ≤ 6°C ⁽¹⁾ ?		<input checked="" type="checkbox"/>		<u>SO</u>
Is there ice present (document if blue ice is used)		<input checked="" type="checkbox"/>		
Are custody seals present on cooler? (if so, document in comments if they are signed and dated, broken or intact)			<input checked="" type="checkbox"/>	
Are custody seals present on each sample container? (if so, document in comments if they are signed and dated, broken or intact)			<input checked="" type="checkbox"/>	
Were all samples received intact ⁽¹⁾ ?	<input checked="" type="checkbox"/>			
Was adequate sample volume provided ⁽¹⁾ ?	<input checked="" type="checkbox"/>			
Are short holding time analytes or samples with HTs due within 48 hours present ⁽¹⁾ ?		<input checked="" type="checkbox"/>		
Is a chain-of-custody (COC) present and filled out completely ⁽¹⁾ ?		<input checked="" type="checkbox"/>		
Does the COC agree with the number and type of sample bottles received ⁽¹⁾ ?	<input checked="" type="checkbox"/>			<u>no times</u>
Do the sample IDs on the bottle labels match the COC ⁽¹⁾ ?	<input checked="" type="checkbox"/>			
Is the COC properly relinquished by the client with date and time recorded ⁽¹⁾ ?	<input checked="" type="checkbox"/>			
For volatiles in water – is there headspace (> ¼ inch bubble) present? If yes, contact client and note in narrative.			<input checked="" type="checkbox"/>	
Are samples preserved that require preservation and was it checked ⁽¹⁾ ? (note ID of confirmation instrument used in comments) / (preservation is not confirmed for subcontracted analyses in order to insure sample integrity)/(pH <2 for samples preserved with HNO ₃ , HCL, H ₂ SO ₄) / (pH >10 for samples preserved with NaAsO ₂ +NaOH, ZnAc+NaOH)			<input checked="" type="checkbox"/>	
Additional Comments (if any):				

⁽¹⁾If NO, then contact the client before proceeding with analysis and note date/time and person contacted as well as the corrective action to in the additional comments (above) and the case narrative.

Reviewed by (Project Manager) EHO

6/13/12
Date/Time Reviewed

Origins Laboratory, Inc.

J. Bynon

The results in this report apply to the samples analyzed in accordance with the chain of custody document. This analytical report must be reproduced in its entirety.

Fremont Environmental
8305 6th St, PO Box 1289
Wellington CO 80549

Paul Henehan
Project Number: [none]
Project: PDC - Gus LD Pad

FS-01

6/3/2024 12:00:00AM

Analyte	Result	Min Detection Limit	Reporting Limit	Units	Dilution	Batch	Prepared	Analyzed	Notes
---------	--------	---------------------	-----------------	-------	----------	-------	----------	----------	-------

Origins Laboratory, Inc. Y406041-01 (Soil)

Boron (DTPA Sorbitol)

Boron	ND	0.0983	mg/L	1	B4F0411	06/04/2024	06/05/2024	
-------	----	--------	------	---	---------	------------	------------	--

DRO/ORO by EPA 8015D

Diesel (C10-C28)	ND	25.0	mg/kg	1	B4F0347	06/03/2024	06/04/2024	Ua
Residual Range Organics (C28-C40)	ND	100	"	"	"	"	"	Ua

Surrogate: o-Terphenyl	91.5 %	50-150			"	"	"	
------------------------	--------	--------	--	--	---	---	---	--

GBTEX+TMBs by 8260D

1,2,4-Trimethylbenzene	ND	0.00200	mg/kg	1	B4F0344	06/03/2024	06/03/2024	Ua
1,3,5-Trimethylbenzene	ND	0.00200	"	"	"	"	"	Ua
Benzene	ND	0.00200	"	"	"	"	"	Ua
Ethylbenzene	ND	0.00200	"	"	"	"	"	Ua
Toluene	ND	0.00200	"	"	"	"	"	Ua
Xylenes, total	ND	0.00200	"	"	"	"	"	Ua
Gasoline Range Hydrocarbons	ND	0.200	"	"	"	"	"	Ua

Surrogate: 1,2-Dichloroethane-d4	108 %	70-130			"	"	"	
----------------------------------	-------	--------	--	--	---	---	---	--

Origins Laboratory, Inc.



The results in this report apply to the samples analyzed in accordance with the chain of custody document. This analytical report must be reproduced in its entirety.

Fremont Environmental
8305 6th St, PO Box 1289
Wellington CO 80549

Paul Henehan
Project Number: [none]
Project: PDC - Gus LD Pad

FS-01

6/3/2024 12:00:00AM

Analyte	Result	Min Detection Limit	Reporting Limit	Units	Dilution	Batch	Prepared	Analyzed	Notes
---------	--------	---------------------	-----------------	-------	----------	-------	----------	----------	-------

Origins Laboratory, Inc.
Y406041-01 (Soil)

GBTEX+TMBs by 8260D

Surrogate: Toluene-d8	96.4 %	70-130	B4F03 44	06/03/2024	06/03/2024
Surrogate: 4-Bromofluorobenzene	103 %	70-130	"	"	"

Metals by Saturated Paste by EPA 6010

Calcium	3.09	0.499	meq/L	10	[CALC]	06/04/2024	06/05/2024
Magnesium	2.03	0.823	"	"	"	"	"
Sodium	45.8	0.435	"	"	"	"	"

PAH by EPA 8270E

1-Methylnaphthalene	ND	0.002	mg/kg	1	B4F0345	06/03/2024	06/04/2024	Ua
2-Methylnaphthalene	ND	0.002	"	"	"	"	"	Ua
Acenaphthene	ND	0.020	"	"	"	"	"	Ua
Anthracene	ND	0.020	"	"	"	"	"	Ua
Benzo (a) anthracene	ND	0.005	"	"	"	"	"	Ua
Benzo (a) pyrene	ND	0.020	"	"	"	"	"	Ua
Benzo (b) fluoranthene	ND	0.020	"	"	"	"	"	Ua
Benzo (k) fluoranthene	ND	0.020	"	"	"	"	"	Ua
Chrysene	ND	0.020	"	"	"	"	"	Ua
Dibenz (a,h) anthracene	ND	0.020	"	"	"	"	"	Ua
Fluoranthene	ND	0.020	"	"	"	"	"	Ua

Origins Laboratory, Inc.



The results in this report apply to the samples analyzed in accordance with the chain of custody document. This analytical report must be reproduced in its entirety.

Fremont Environmental

8305 6th St, PO Box 1289

Wellington CO 80549

Paul Henehan

Project Number: [none]

Project: PDC - Gus LD Pad

FS-01

6/3/2024 12:00:00AM

Analyte	Result	Min Detection Limit	Reporting Limit	Units	Dilution	Batch	Prepared	Analyzed	Notes
---------	--------	---------------------	-----------------	-------	----------	-------	----------	----------	-------

Origins Laboratory, Inc.

Y406041-01 (Soil)

PAH by EPA 8270E

Fluorene	ND	0.020	mg/kg	1	B4F0345	06/03/2024	06/04/2024	Ua
Indeno (1,2,3-cd) pyrene	ND	0.020	"	"	"	"	"	Ua
Naphthalene	ND	0.002	"	"	"	"	"	Ua
Pyrene	ND	0.020	"	"	"	"	"	Ua

Surrogate: Fluorene-d10	103 %	60-130	"	"	"
Surrogate: Anthracene-d10	90.0 %	60-130	"	"	"
Surrogate: Pyrene-d10	106 %	60-130	"	"	"
Surrogate: Benzo (a) pyrene-d12	96.9 %	60-130	"	"	"

pH in Soil by 9045D

pH	8.09	pH Units	1	B4F0424	06/04/2024	06/05/2024
----	------	----------	---	---------	------------	------------

SAR by 20B Saturated Paste

SAR	28.7	0.0100	SAR	1	B4F0418	06/04/2024	06/05/2024
-----	------	--------	-----	---	---------	------------	------------

Specific Conductance Mod. 9050A

Specific Conductance (EC)	4.72	0.00500	mmhos/cm	1	B4F0424	06/04/2024	06/05/2024
---------------------------	------	---------	----------	---	---------	------------	------------

Table 915 metals by EPA 6020B

Origins Laboratory, Inc.



The results in this report apply to the samples analyzed in accordance with the chain of custody document. This analytical report must be reproduced in its entirety.

Fremont Environmental
8305 6th St, PO Box 1289
Wellington CO 80549

Paul Henehan
Project Number: [none]
Project: PDC - Gus LD Pad

FS-01

6/3/2024 12:00:00AM

Analyte	Result	Min Detection Limit	Reporting Limit	Units	Dilution	Batch	Prepared	Analyzed	Notes
---------	--------	---------------------	-----------------	-------	----------	-------	----------	----------	-------

Origins Laboratory, Inc.
Y406041-01 (Soil)

Table 915 metals by EPA 6020B

Arsenic	2.39	0.276	mg/kg	10	B4F0350	06/03/2024	06/04/2024
Barium	27.2	9.52	"	"	"	"	"
Cadmium	0.211	0.0952	"	"	"	"	"
Copper	10.5	9.52	"	"	"	"	"
Lead	10.8	0.952	"	"	"	"	"
Nickel	9.59	0.952	"	"	"	"	"
Selenium	ND	0.247	"	"	"	"	"
Silver	ND	0.0952	"	"	"	"	"
Zinc	ND	35.2	"	"	"	"	"

Total Metals 7196A

Hexavalent Chromium	0.218	0.111	0.276	mg/kg dry	1	2623271	06/07/2024	06/11/2024	J
---------------------	-------	-------	-------	-----------	---	---------	------------	------------	---

Origins Laboratory, Inc.



The results in this report apply to the samples analyzed in accordance with the chain of custody document. This analytical report must be reproduced in its entirety.

Fremont Environmental
8305 6th St, PO Box 1289
Wellington CO 80549

Paul Henehan
Project Number: [none]
Project: PDC - Gus LD Pad

FS-02

6/3/2024 12:00:00AM

Analyte	Result	Min Detection Limit	Reporting Limit	Units	Dilution	Batch	Prepared	Analyzed	Notes
---------	--------	---------------------	-----------------	-------	----------	-------	----------	----------	-------

Origins Laboratory, Inc. Y406041-02 (Soil)

Boron (DTPA Sorbitol)

Boron	ND	0.101	mg/L	1	B4F0411	06/04/2024	06/05/2024	
-------	----	-------	------	---	---------	------------	------------	--

DRO/ORO by EPA 8015D

Diesel (C10-C28)	ND	25.0	mg/kg	1	B4F0347	06/03/2024	06/04/2024	Ua
Residual Range Organics (C28-C40)	ND	100	"	"	"	"	"	Ua

Surrogate: o-Terphenyl	102 %	50-150		"	"	"
------------------------	-------	--------	--	---	---	---

GBTEX+TMBs by 8260D

1,2,4-Trimethylbenzene	ND	0.00200	mg/kg	1	B4F0344	06/03/2024	06/03/2024	Ua
1,3,5-Trimethylbenzene	ND	0.00200	"	"	"	"	"	Ua
Benzene	ND	0.00200	"	"	"	"	"	Ua
Ethylbenzene	ND	0.00200	"	"	"	"	"	Ua
Toluene	ND	0.00200	"	"	"	"	"	Ua
Xylenes, total	ND	0.00200	"	"	"	"	"	Ua
Gasoline Range Hydrocarbons	ND	0.200	"	"	"	"	"	Ua

Surrogate: 1,2-Dichloroethane-d4	111 %	70-130		"	"	"
----------------------------------	-------	--------	--	---	---	---

Origins Laboratory, Inc.



The results in this report apply to the samples analyzed in accordance with the chain of custody document. This analytical report must be reproduced in its entirety.

Fremont Environmental
8305 6th St, PO Box 1289
Wellington CO 80549

Paul Henehan
Project Number: [none]
Project: PDC - Gus LD Pad

FS-02

6/3/2024 12:00:00AM

Analyte	Result	Min Detection Limit	Reporting Limit	Units	Dilution	Batch	Prepared	Analyzed	Notes
---------	--------	---------------------	-----------------	-------	----------	-------	----------	----------	-------

Origins Laboratory, Inc. Y406041-02 (Soil)

GBTEX+TMBs by 8260D

Surrogate: Toluene-d8	94.1 %	70-130	B4F03 44	06/03/2024	06/03/2024
Surrogate: 4-Bromofluorobenzene	105 %	70-130	"	"	"

Metals by Saturated Paste by EPA 6010

Calcium	4.93	0.499	meq/L	10	[CALC]	06/04/2024	06/05/2024
Magnesium	4.46	0.823	"	"	"	"	"
Sodium	56.3	0.435	"	"	"	"	"

PAH by EPA 8270E

1-Methylnaphthalene	ND	0.002	mg/kg	1	B4F0345	06/03/2024	06/04/2024	Ua
2-Methylnaphthalene	ND	0.002	"	"	"	"	"	Ua
Acenaphthene	ND	0.020	"	"	"	"	"	Ua
Anthracene	ND	0.020	"	"	"	"	"	Ua
Benzo (a) anthracene	ND	0.005	"	"	"	"	"	Ua
Benzo (a) pyrene	ND	0.020	"	"	"	"	"	Ua
Benzo (b) fluoranthene	ND	0.020	"	"	"	"	"	Ua
Benzo (k) fluoranthene	ND	0.020	"	"	"	"	"	Ua
Chrysene	ND	0.020	"	"	"	"	"	Ua
Dibenz (a,h) anthracene	ND	0.020	"	"	"	"	"	Ua
Fluoranthene	ND	0.020	"	"	"	"	"	Ua

Origins Laboratory, Inc.



The results in this report apply to the samples analyzed in accordance with the chain of custody document. This analytical report must be reproduced in its entirety.

Fremont Environmental

8305 6th St, PO Box 1289

Wellington CO 80549

Paul Henehan

Project Number: [none]

Project: PDC - Gus LD Pad

FS-02

6/3/2024 12:00:00AM

Analyte	Result	Min Detection Limit	Reporting Limit	Units	Dilution	Batch	Prepared	Analyzed	Notes
---------	--------	---------------------	-----------------	-------	----------	-------	----------	----------	-------

Origins Laboratory, Inc.

Y406041-02 (Soil)

PAH by EPA 8270E

Fluorene	ND	0.020	mg/kg	1	B4F0345	06/03/2024	06/04/2024	Ua
Indeno (1,2,3-cd) pyrene	ND	0.020	"	"	"	"	"	Ua
Naphthalene	ND	0.002	"	"	"	"	"	Ua
Pyrene	ND	0.020	"	"	"	"	"	Ua

Surrogate: Fluorene-d10	106 %	60-130	"	"	"
Surrogate: Anthracene-d10	95.3 %	60-130	"	"	"
Surrogate: Pyrene-d10	107 %	60-130	"	"	"
Surrogate: Benzo (a) pyrene-d12	104 %	60-130	"	"	"

pH in Soil by 9045D

pH	8.08	pH Units	1	B4F0424	06/04/2024	06/05/2024
----	------	----------	---	---------	------------	------------

SAR by 20B Saturated Paste

SAR	26.0	0.0100	SAR	1	B4F0418	06/04/2024	06/05/2024
-----	------	--------	-----	---	---------	------------	------------

Specific Conductance Mod. 9050A

Specific Conductance (EC)	5.82	0.00500	mmhos/cm	1	B4F0424	06/04/2024	06/05/2024
---------------------------	------	---------	----------	---	---------	------------	------------

Table 915 metals by EPA 6020B

Origins Laboratory, Inc.



The results in this report apply to the samples analyzed in accordance with the chain of custody document. This analytical report must be reproduced in its entirety.

Fremont Environmental
8305 6th St, PO Box 1289
Wellington CO 80549

Paul Henehan
Project Number: [none]
Project: PDC - Gus LD Pad

FS-02

6/3/2024 12:00:00AM

Analyte	Result	Min Detection Limit	Reporting Limit	Units	Dilution	Batch	Prepared	Analyzed	Notes
---------	--------	---------------------	-----------------	-------	----------	-------	----------	----------	-------

Origins Laboratory, Inc.
Y406041-02 (Soil)

Table 915 metals by EPA 6020B

Arsenic	4.22	0.247	mg/kg	10	B4F0346	06/03/2024	06/04/2024
Barium	22.4	8.53	"	"	"	"	"
Cadmium	0.157	0.0853	"	"	"	"	"
Copper	11.2	8.53	"	"	"	"	"
Lead	10.6	0.853	"	"	"	"	"
Nickel	9.28	0.853	"	"	"	"	"
Selenium	0.270	0.222	"	"	"	"	"
Silver	ND	0.0853	"	"	"	"	"
Zinc	40.0	31.5	"	"	"	"	"

Total Metals 7196A

Hexavalent Chromium	0.171	0.150	0.374	mg/kg dry	1	2623271	06/07/2024	06/11/2024	J
---------------------	-------	-------	-------	-----------	---	---------	------------	------------	---

Origins Laboratory, Inc.



The results in this report apply to the samples analyzed in accordance with the chain of custody document. This analytical report must be reproduced in its entirety.

Fremont Environmental
8305 6th St, PO Box 1289
Wellington CO 80549

Paul Henehan
Project Number: [none]
Project: PDC - Gus LD Pad

FS-03

6/3/2024 12:00:00AM

Analyte	Result	Min Detection Limit	Reporting Limit	Units	Dilution	Batch	Prepared	Analyzed	Notes
---------	--------	---------------------	-----------------	-------	----------	-------	----------	----------	-------

Origins Laboratory, Inc. Y406041-03 (Soil)

Boron (DTPA Sorbitol)

Boron	0.212	0.101	mg/L	1	B4F0411	06/04/2024	06/05/2024	
-------	-------	-------	------	---	---------	------------	------------	--

DRO/ORO by EPA 8015D

Diesel (C10-C28)	ND	25.0	mg/kg	1	B4F0347	06/03/2024	06/04/2024	Ua
Residual Range Organics (C28-C40)	ND	100	"	"	"	"	"	Ua

Surrogate: o-Terphenyl	96.4 %	50-150			"	"	"	
------------------------	--------	--------	--	--	---	---	---	--

GBTEX+TMBs by 8260D

1,2,4-Trimethylbenzene	ND	0.00200	mg/kg	1	B4F0344	06/03/2024	06/03/2024	Ua
1,3,5-Trimethylbenzene	ND	0.00200	"	"	"	"	"	Ua
Benzene	ND	0.00200	"	"	"	"	"	Ua
Ethylbenzene	ND	0.00200	"	"	"	"	"	Ua
Toluene	ND	0.00200	"	"	"	"	"	Ua
Xylenes, total	ND	0.00200	"	"	"	"	"	Ua
Gasoline Range Hydrocarbons	ND	0.200	"	"	"	"	"	Ua

Surrogate: 1,2-Dichloroethane-d4	104 %	70-130			"	"	"	
----------------------------------	-------	--------	--	--	---	---	---	--

Origins Laboratory, Inc.



The results in this report apply to the samples analyzed in accordance with the chain of custody document. This analytical report must be reproduced in its entirety.

Fremont Environmental
8305 6th St, PO Box 1289
Wellington CO 80549

Paul Henehan
Project Number: [none]
Project: PDC - Gus LD Pad

FS-03

6/3/2024 12:00:00AM

Analyte	Result	Min Detection Limit	Reporting Limit	Units	Dilution	Batch	Prepared	Analyzed	Notes
---------	--------	---------------------	-----------------	-------	----------	-------	----------	----------	-------

Origins Laboratory, Inc. Y406041-03 (Soil)

GBTEX+TMBs by 8260D

Surrogate: Toluene-d8	97.0 %	70-130	B4F03 44	06/03/2024	06/03/2024
Surrogate: 4-Bromofluorobenzene	104 %	70-130	"	"	"

Metals by Saturated Paste by EPA 6010

Calcium	7.51	0.499	meq/L	10	[CALC]	06/04/2024	06/05/2024
Magnesium	3.33	0.823	"	"	"	"	"
Sodium	29.6	0.435	"	"	"	"	"

PAH by EPA 8270E

1-Methylnaphthalene	ND	0.002	mg/kg	1	B4F0345	06/03/2024	06/04/2024	Ua
2-Methylnaphthalene	ND	0.002	"	"	"	"	"	Ua
Acenaphthene	ND	0.020	"	"	"	"	"	Ua
Anthracene	ND	0.020	"	"	"	"	"	Ua
Benzo (a) anthracene	ND	0.005	"	"	"	"	"	Ua
Benzo (a) pyrene	ND	0.020	"	"	"	"	"	Ua
Benzo (b) fluoranthene	ND	0.020	"	"	"	"	"	Ua
Benzo (k) fluoranthene	ND	0.020	"	"	"	"	"	Ua
Chrysene	ND	0.020	"	"	"	"	"	Ua
Dibenz (a,h) anthracene	ND	0.020	"	"	"	"	"	Ua
Fluoranthene	ND	0.020	"	"	"	"	"	Ua

Origins Laboratory, Inc.



The results in this report apply to the samples analyzed in accordance with the chain of custody document. This analytical report must be reproduced in its entirety.

Fremont Environmental

8305 6th St, PO Box 1289

Wellington CO 80549

Paul Henehan

Project Number: [none]

Project: PDC - Gus LD Pad

FS-03

6/3/2024 12:00:00AM

Analyte	Result	Min Detection Limit	Reporting Limit	Units	Dilution	Batch	Prepared	Analyzed	Notes
---------	--------	---------------------	-----------------	-------	----------	-------	----------	----------	-------

Origins Laboratory, Inc.

Y406041-03 (Soil)

PAH by EPA 8270E

Fluorene	ND	0.020	mg/kg	1	B4F0345	06/03/2024	06/04/2024	Ua
Indeno (1,2,3-cd) pyrene	ND	0.020	"	"	"	"	"	Ua
Naphthalene	ND	0.002	"	"	"	"	"	Ua
Pyrene	ND	0.020	"	"	"	"	"	Ua

Surrogate: Fluorene-d10	99.7 %	60-130	"	"	"
Surrogate: Anthracene-d10	98.9 %	60-130	"	"	"
Surrogate: Pyrene-d10	109 %	60-130	"	"	"
Surrogate: Benzo (a) pyrene-d12	96.4 %	60-130	"	"	"

pH in Soil by 9045D

pH	8.19	pH Units	1	B4F0424	06/04/2024	06/05/2024
----	------	----------	---	---------	------------	------------

SAR by 20B Saturated Paste

SAR	12.7	0.0100	SAR	1	B4F0418	06/04/2024	06/05/2024
-----	------	--------	-----	---	---------	------------	------------

Specific Conductance Mod. 9050A

Specific Conductance (EC)	3.69	0.00500	mmhos/cm	1	B4F0424	06/04/2024	06/05/2024
---------------------------	------	---------	----------	---	---------	------------	------------

Table 915 metals by EPA 6020B

Origins Laboratory, Inc.



The results in this report apply to the samples analyzed in accordance with the chain of custody document. This analytical report must be reproduced in its entirety.

Fremont Environmental
8305 6th St, PO Box 1289
Wellington CO 80549

Paul Henehan
Project Number: [none]
Project: PDC - Gus LD Pad

FS-03

6/3/2024 12:00:00AM

Analyte	Result	Min Detection Limit	Reporting Limit	Units	Dilution	Batch	Prepared	Analyzed	Notes
---------	--------	---------------------	-----------------	-------	----------	-------	----------	----------	-------

Origins Laboratory, Inc.
Y406041-03 (Soil)

Table 915 metals by EPA 6020B

Arsenic	4.14	0.261	mg/kg	10	B4F0346	06/03/2024	06/04/2024
Barium	52.4	8.99	"	"	"	"	"
Cadmium	0.311	0.0899	"	"	"	"	"
Copper	11.2	8.99	"	"	"	"	"
Lead	11.5	0.899	"	"	"	"	"
Nickel	13.1	0.899	"	"	"	"	"
Selenium	ND	0.234	"	"	"	"	"
Silver	ND	0.0899	"	"	"	"	"
Zinc	42.7	33.2	"	"	"	"	"

Total Metals 7196A

Hexavalent Chromium	ND	0.137	0.342	mg/kg dry	1	2623271	06/07/2024	06/11/2024	U
---------------------	----	-------	-------	-----------	---	---------	------------	------------	---

Origins Laboratory, Inc.



The results in this report apply to the samples analyzed in accordance with the chain of custody document. This analytical report must be reproduced in its entirety.

Fremont Environmental
8305 6th St, PO Box 1289
Wellington CO 80549

Paul Henehan
Project Number: [none]
Project: PDC - Gus LD Pad

FS-04

6/3/2024 12:00:00AM

Analyte	Result	Min Detection Limit	Reporting Limit	Units	Dilution	Batch	Prepared	Analyzed	Notes
---------	--------	---------------------	-----------------	-------	----------	-------	----------	----------	-------

Origins Laboratory, Inc. Y406041-04 (Soil)

Boron (DTPA Sorbitol)

Boron	0.247	0.101	mg/L	1	B4F0411	06/04/2024	06/05/2024	
-------	-------	-------	------	---	---------	------------	------------	--

DRO/ORO by EPA 8015D

Diesel (C10-C28)	ND	25.0	mg/kg	1	B4F0347	06/03/2024	06/04/2024	Ua
Residual Range Organics (C28-C40)	ND	100	"	"	"	"	"	Ua

Surrogate: o-Terphenyl	93.5 %	50-150	"	"	"
------------------------	--------	--------	---	---	---

GBTEX+TMBs by 8260D

1,2,4-Trimethylbenzene	ND	0.00200	mg/kg	1	B4F0344	06/03/2024	06/03/2024	Ua
1,3,5-Trimethylbenzene	ND	0.00200	"	"	"	"	"	Ua
Benzene	ND	0.00200	"	"	"	"	"	Ua
Ethylbenzene	ND	0.00200	"	"	"	"	"	Ua
Toluene	ND	0.00200	"	"	"	"	"	Ua
Xylenes, total	ND	0.00200	"	"	"	"	"	Ua
Gasoline Range Hydrocarbons	ND	0.200	"	"	"	"	"	Ua

Surrogate: 1,2-Dichloroethane-d4	105 %	70-130	"	"	"
----------------------------------	-------	--------	---	---	---

Origins Laboratory, Inc.



The results in this report apply to the samples analyzed in accordance with the chain of custody document. This analytical report must be reproduced in its entirety.

Fremont Environmental
8305 6th St, PO Box 1289
Wellington CO 80549

Paul Henehan
Project Number: [none]
Project: PDC - Gus LD Pad

FS-04

6/3/2024 12:00:00AM

Analyte	Result	Min Detection Limit	Reporting Limit	Units	Dilution	Batch	Prepared	Analyzed	Notes
---------	--------	---------------------	-----------------	-------	----------	-------	----------	----------	-------

Origins Laboratory, Inc. Y406041-04 (Soil)

GBTEX+TMBs by 8260D

Surrogate: Toluene-d8	98.6 %	70-130	B4F03 44	06/03/2024	06/03/2024
Surrogate: 4-Bromofluorobenzene	106 %	70-130	"	"	"

Metals by Saturated Paste by EPA 6010

Calcium	5.62	0.499	meq/L	10	[CALC]	06/04/2024	06/05/2024
Magnesium	2.24	0.823	"	"	"	"	"
Sodium	15.7	0.435	"	"	"	"	"

PAH by EPA 8270E

1-Methylnaphthalene	ND	0.002	mg/kg	1	B4F0345	06/03/2024	06/04/2024	Ua
2-Methylnaphthalene	ND	0.002	"	"	"	"	"	Ua
Acenaphthene	ND	0.020	"	"	"	"	"	Ua
Anthracene	ND	0.020	"	"	"	"	"	Ua
Benzo (a) anthracene	ND	0.005	"	"	"	"	"	Ua
Benzo (a) pyrene	ND	0.020	"	"	"	"	"	Ua
Benzo (b) fluoranthene	ND	0.020	"	"	"	"	"	Ua
Benzo (k) fluoranthene	ND	0.020	"	"	"	"	"	Ua
Chrysene	ND	0.020	"	"	"	"	"	Ua
Dibenz (a,h) anthracene	ND	0.020	"	"	"	"	"	Ua
Fluoranthene	ND	0.020	"	"	"	"	"	Ua

Origins Laboratory, Inc.



The results in this report apply to the samples analyzed in accordance with the chain of custody document. This analytical report must be reproduced in its entirety.

Fremont Environmental

8305 6th St, PO Box 1289

Wellington CO 80549

Paul Henehan

Project Number: [none]

Project: PDC - Gus LD Pad

FS-04

6/3/2024 12:00:00AM

Analyte	Result	Min Detection Limit	Reporting Limit	Units	Dilution	Batch	Prepared	Analyzed	Notes
---------	--------	---------------------	-----------------	-------	----------	-------	----------	----------	-------

Origins Laboratory, Inc.

Y406041-04 (Soil)

PAH by EPA 8270E

Fluorene	ND	0.020	mg/kg	1	B4F0345	06/03/2024	06/04/2024	Ua
Indeno (1,2,3-cd) pyrene	ND	0.020	"	"	"	"	"	Ua
Naphthalene	ND	0.002	"	"	"	"	"	Ua
Pyrene	ND	0.020	"	"	"	"	"	Ua

Surrogate: Fluorene-d10	110 %	60-130	"	"	"
Surrogate: Anthracene-d10	96.5 %	60-130	"	"	"
Surrogate: Pyrene-d10	103 %	60-130	"	"	"
Surrogate: Benzo (a) pyrene-d12	106 %	60-130	"	"	"

pH in Soil by 9045D

pH	8.34	pH Units	1	B4F0424	06/04/2024	06/05/2024
----	------	----------	---	---------	------------	------------

SAR by 20B Saturated Paste

SAR	7.91	0.0100	SAR	1	B4F0418	06/04/2024	06/05/2024
-----	------	--------	-----	---	---------	------------	------------

Specific Conductance Mod. 9050A

Specific Conductance (EC)	2.22	0.00500	mmhos/cm	1	B4F0424	06/04/2024	06/05/2024
---------------------------	------	---------	----------	---	---------	------------	------------

Table 915 metals by EPA 6020B

Origins Laboratory, Inc.



The results in this report apply to the samples analyzed in accordance with the chain of custody document. This analytical report must be reproduced in its entirety.

Fremont Environmental
8305 6th St, PO Box 1289
Wellington CO 80549

Paul Henehan
Project Number: [none]
Project: PDC - Gus LD Pad

FS-04

6/3/2024 12:00:00AM

Analyte	Result	Min Detection Limit	Reporting Limit	Units	Dilution	Batch	Prepared	Analyzed	Notes
---------	--------	---------------------	-----------------	-------	----------	-------	----------	----------	-------

Origins Laboratory, Inc.
Y406041-04 (Soil)

Table 915 metals by EPA 6020B

Arsenic	5.44	0.271	mg/kg	10	B4F0346	06/03/2024	06/04/2024
Barium	60.7	9.33	"	"	"	"	"
Cadmium	0.418	0.0933	"	"	"	"	"
Copper	15.5	9.33	"	"	"	"	"
Lead	27.6	0.933	"	"	"	"	"
Nickel	14.1	0.933	"	"	"	"	"
Selenium	ND	0.243	"	"	"	"	"
Silver	ND	0.0933	"	"	"	"	"
Zinc	52.7	34.5	"	"	"	"	"

Total Metals 7196A

Hexavalent Chromium	ND	0.147	0.368	mg/kg dry	1	2623271	06/07/2024	06/11/2024	U
---------------------	----	-------	-------	-----------	---	---------	------------	------------	---

Origins Laboratory, Inc.



The results in this report apply to the samples analyzed in accordance with the chain of custody document. This analytical report must be reproduced in its entirety.

Fremont Environmental
8305 6th St, PO Box 1289
Wellington CO 80549

Paul Henehan
Project Number: [none]
Project: PDC - Gus LD Pad

FS-05

6/3/2024 12:00:00AM

Analyte	Result	Min Detection Limit	Reporting Limit	Units	Dilution	Batch	Prepared	Analyzed	Notes
---------	--------	---------------------	-----------------	-------	----------	-------	----------	----------	-------

Origins Laboratory, Inc. Y406041-05 (Soil)

Boron (DTPA Sorbitol)

Boron	0.279	0.0985	mg/L	1	B4F0411	06/04/2024	06/05/2024	
-------	-------	--------	------	---	---------	------------	------------	--

DRO/ORO by EPA 8015D

Diesel (C10-C28)	ND	25.0	mg/kg	1	B4F0347	06/03/2024	06/04/2024	Ua
Residual Range Organics (C28-C40)	ND	100	"	"	"	"	"	Ua

Surrogate: o-Terphenyl	97.7 %	50-150	"	"	"	"	"	
------------------------	--------	--------	---	---	---	---	---	--

GBTEX+TMBs by 8260D

1,2,4-Trimethylbenzene	ND	0.00200	mg/kg	1	B4F0344	06/03/2024	06/04/2024	Ua
1,3,5-Trimethylbenzene	ND	0.00200	"	"	"	"	"	Ua
Benzene	ND	0.00200	"	"	"	"	"	Ua
Ethylbenzene	ND	0.00200	"	"	"	"	"	Ua
Toluene	ND	0.00200	"	"	"	"	"	Ua
Xylenes, total	ND	0.00200	"	"	"	"	"	Ua
Gasoline Range Hydrocarbons	ND	0.200	"	"	"	"	"	Ua

Surrogate: 1,2-Dichloroethane-d4	104 %	70-130	"	"	"	"	"	
----------------------------------	-------	--------	---	---	---	---	---	--

Origins Laboratory, Inc.



The results in this report apply to the samples analyzed in accordance with the chain of custody document. This analytical report must be reproduced in its entirety.

Fremont Environmental

8305 6th St, PO Box 1289

Wellington CO 80549

Paul Henehan

Project Number: [none]

Project: PDC - Gus LD Pad

FS-05

6/3/2024 12:00:00AM

Analyte	Result	Min Detection Limit	Reporting Limit	Units	Dilution	Batch	Prepared	Analyzed	Notes
---------	--------	---------------------	-----------------	-------	----------	-------	----------	----------	-------

Origins Laboratory, Inc.

Y406041-05 (Soil)

GBTEX+TMBs by 8260D

Surrogate: Toluene-d8	97.1 %	70-130				B4F03 44	06/03/2024	06/04/2024	
Surrogate: 4-Bromofluorobenzene	103 %	70-130				"	"	"	

Metals by Saturated Paste by EPA 6010

Calcium	1.82	0.499	meq/L	10	[CALC]		06/04/2024	06/05/2024	
Magnesium	1.09	0.823	"	"	"		"	"	
Sodium	17.7	0.435	"	"	"		"	"	

PAH by EPA 8270E

1-Methylnaphthalene	ND	0.002	mg/kg	1	B4F0345	06/03/2024	06/04/2024	Ua
2-Methylnaphthalene	ND	0.002	"	"	"	"	"	Ua
Acenaphthene	ND	0.020	"	"	"	"	"	Ua
Anthracene	ND	0.020	"	"	"	"	"	Ua
Benzo (a) anthracene	ND	0.005	"	"	"	"	"	Ua
Benzo (a) pyrene	ND	0.020	"	"	"	"	"	Ua
Benzo (b) fluoranthene	ND	0.020	"	"	"	"	"	Ua
Benzo (k) fluoranthene	ND	0.020	"	"	"	"	"	Ua
Chrysene	ND	0.020	"	"	"	"	"	Ua
Dibenz (a,h) anthracene	ND	0.020	"	"	"	"	"	Ua
Fluoranthene	ND	0.020	"	"	"	"	"	Ua

Origins Laboratory, Inc.



The results in this report apply to the samples analyzed in accordance with the chain of custody document. This analytical report must be reproduced in its entirety.

Fremont Environmental

8305 6th St, PO Box 1289

Wellington CO 80549

Paul Henehan

Project Number: [none]

Project: PDC - Gus LD Pad

FS-05

6/3/2024 12:00:00AM

Analyte	Result	Min Detection Limit	Reporting Limit	Units	Dilution	Batch	Prepared	Analyzed	Notes
---------	--------	---------------------	-----------------	-------	----------	-------	----------	----------	-------

Origins Laboratory, Inc.

Y406041-05 (Soil)

PAH by EPA 8270E

Fluorene	ND	0.020	mg/kg	1	B4F0345	06/03/2024	06/04/2024	Ua
Indeno (1,2,3-cd) pyrene	ND	0.020	"	"	"	"	"	Ua
Naphthalene	ND	0.002	"	"	"	"	"	Ua
Pyrene	ND	0.020	"	"	"	"	"	Ua

Surrogate: Fluorene-d10	102 %	60-130	"	"	"
Surrogate: Anthracene-d10	94.5 %	60-130	"	"	"
Surrogate: Pyrene-d10	99.8 %	60-130	"	"	"
Surrogate: Benzo (a) pyrene-d12	99.5 %	60-130	"	"	"

pH in Soil by 9045D

pH	8.51	pH Units	1	B4F0424	06/04/2024	06/05/2024
----	------	----------	---	---------	------------	------------

SAR by 20B Saturated Paste

SAR	14.7	0.0100	SAR	1	B4F0418	06/04/2024	06/05/2024
-----	------	--------	-----	---	---------	------------	------------

Specific Conductance Mod. 9050A

Specific Conductance (EC)	2.04	0.00500	mmhos/cm	1	B4F0424	06/04/2024	06/05/2024
---------------------------	------	---------	----------	---	---------	------------	------------

Table 915 metals by EPA 6020B

Origins Laboratory, Inc.



The results in this report apply to the samples analyzed in accordance with the chain of custody document. This analytical report must be reproduced in its entirety.

Fremont Environmental
8305 6th St, PO Box 1289
Wellington CO 80549

Paul Henehan
Project Number: [none]
Project: PDC - Gus LD Pad

FS-05

6/3/2024 12:00:00AM

Analyte	Result	Min Detection Limit	Reporting Limit	Units	Dilution	Batch	Prepared	Analyzed	Notes
---------	--------	---------------------	-----------------	-------	----------	-------	----------	----------	-------

Origins Laboratory, Inc.
Y406041-05 (Soil)

Table 915 metals by EPA 6020B

Arsenic	3.16	0.264	mg/kg	10	B4F0346	06/03/2024	06/04/2024
Barium	171	9.11	"	"	"	"	"
Cadmium	0.132	0.0911	"	"	"	"	"
Copper	ND	9.11	"	"	"	"	"
Lead	7.17	0.911	"	"	"	"	"
Nickel	7.46	0.911	"	"	"	"	"
Selenium	ND	0.237	"	"	"	"	"
Silver	ND	0.0911	"	"	"	"	"
Zinc	33.7	33.7	"	"	"	"	"

Total Metals by 7196A

Hexavalent Chromium	0.568	0.144	0.361	mg/kg dry	1	2631125	06/24/2024	06/25/2024
---------------------	-------	-------	-------	-----------	---	---------	------------	------------

Origins Laboratory, Inc.



The results in this report apply to the samples analyzed in accordance with the chain of custody document. This analytical report must be reproduced in its entirety.

Fremont Environmental
8305 6th St, PO Box 1289
Wellington CO 80549

Paul Henehan
Project Number: [none]
Project: PDC - Gus LD Pad

FS-06

6/3/2024 12:00:00AM

Analyte	Result	Min Detection Limit	Reporting Limit	Units	Dilution	Batch	Prepared	Analyzed	Notes
---------	--------	---------------------	-----------------	-------	----------	-------	----------	----------	-------

Origins Laboratory, Inc. Y406041-06 (Soil)

Boron (DTPA Sorbitol)

Boron	0.391	0.0992	mg/L	1	B4F0411	06/04/2024	06/05/2024	
-------	-------	--------	------	---	---------	------------	------------	--

DRO/ORO by EPA 8015D

Diesel (C10-C28)	ND	25.0	mg/kg	1	B4F0347	06/03/2024	06/04/2024	Ua
Residual Range Organics (C28-C40)	ND	100	"	"	"	"	"	Ua

Surrogate: o-Terphenyl	93.1 %	50-150	"	"	"	"	"	
------------------------	--------	--------	---	---	---	---	---	--

GBTEX+TMBs by 8260D

1,2,4-Trimethylbenzene	ND	0.00200	mg/kg	1	B4F0344	06/03/2024	06/04/2024	Ua
1,3,5-Trimethylbenzene	ND	0.00200	"	"	"	"	"	Ua
Benzene	ND	0.00200	"	"	"	"	"	Ua
Ethylbenzene	ND	0.00200	"	"	"	"	"	Ua
Toluene	ND	0.00200	"	"	"	"	"	Ua
Xylenes, total	ND	0.00200	"	"	"	"	"	Ua
Gasoline Range Hydrocarbons	ND	0.200	"	"	"	"	"	Ua

Surrogate: 1,2-Dichloroethane-d4	106 %	70-130	"	"	"	"	"	
----------------------------------	-------	--------	---	---	---	---	---	--

Origins Laboratory, Inc.



The results in this report apply to the samples analyzed in accordance with the chain of custody document. This analytical report must be reproduced in its entirety.

Fremont Environmental
8305 6th St, PO Box 1289
Wellington CO 80549

Paul Henehan
Project Number: [none]
Project: PDC - Gus LD Pad

FS-06

6/3/2024 12:00:00AM

Analyte	Result	Min Detection Limit	Reporting Limit	Units	Dilution	Batch	Prepared	Analyzed	Notes
---------	--------	---------------------	-----------------	-------	----------	-------	----------	----------	-------

Origins Laboratory, Inc. Y406041-06 (Soil)

GBTEX+TMBs by 8260D

Surrogate: Toluene-d8	97.9 %	70-130	B4F03 44	06/03/2024	06/04/2024
Surrogate: 4-Bromofluorobenzene	103 %	70-130	"	"	"

Metals by Saturated Paste by EPA 6010

Calcium	15.9	0.499	meq/L	10	[CALC]	06/04/2024	06/05/2024
Magnesium	5.73	0.823	"	"	"	"	"
Sodium	11.1	0.435	"	"	"	"	"

PAH by EPA 8270E

1-Methylnaphthalene	ND	0.002	mg/kg	1	B4F0345	06/03/2024	06/04/2024	Ua
2-Methylnaphthalene	ND	0.002	"	"	"	"	"	Ua
Acenaphthene	ND	0.020	"	"	"	"	"	Ua
Anthracene	ND	0.020	"	"	"	"	"	Ua
Benzo (a) anthracene	ND	0.005	"	"	"	"	"	Ua
Benzo (a) pyrene	ND	0.020	"	"	"	"	"	Ua
Benzo (b) fluoranthene	ND	0.020	"	"	"	"	"	Ua
Benzo (k) fluoranthene	ND	0.020	"	"	"	"	"	Ua
Chrysene	ND	0.020	"	"	"	"	"	Ua
Dibenz (a,h) anthracene	ND	0.020	"	"	"	"	"	Ua
Fluoranthene	ND	0.020	"	"	"	"	"	Ua

Origins Laboratory, Inc.



The results in this report apply to the samples analyzed in accordance with the chain of custody document. This analytical report must be reproduced in its entirety.

Fremont Environmental
8305 6th St, PO Box 1289
Wellington CO 80549

Paul Henehan
Project Number: [none]
Project: PDC - Gus LD Pad

FS-06

6/3/2024 12:00:00AM

Analyte	Result	Min Detection Limit	Reporting Limit	Units	Dilution	Batch	Prepared	Analyzed	Notes
---------	--------	---------------------	-----------------	-------	----------	-------	----------	----------	-------

Origins Laboratory, Inc. Y406041-06 (Soil)

PAH by EPA 8270E

Fluorene	ND	0.020	mg/kg	1	B4F0345	06/03/2024	06/04/2024	Ua
Indeno (1,2,3-cd) pyrene	ND	0.020	"	"	"	"	"	Ua
Naphthalene	ND	0.002	"	"	"	"	"	Ua
Pyrene	ND	0.020	"	"	"	"	"	Ua

Surrogate: Fluorene-d10	102 %	60-130	"	"	"
Surrogate: Anthracene-d10	98.5 %	60-130	"	"	"
Surrogate: Pyrene-d10	107 %	60-130	"	"	"
Surrogate: Benzo (a) pyrene-d12	102 %	60-130	"	"	"

pH in Soil by 9045D

pH	8.19	pH Units	1	B4F0424	06/04/2024	06/05/2024
----	------	----------	---	---------	------------	------------

SAR by 20B Saturated Paste

SAR	3.38	0.0100	SAR	1	B4F0418	06/04/2024	06/05/2024
-----	------	--------	-----	---	---------	------------	------------

Specific Conductance Mod. 9050A

Specific Conductance (EC)	2.65	0.00500	mmhos/cm	1	B4F0424	06/04/2024	06/05/2024
---------------------------	------	---------	----------	---	---------	------------	------------

Table 915 metals by EPA 6020B

Origins Laboratory, Inc.



The results in this report apply to the samples analyzed in accordance with the chain of custody document. This analytical report must be reproduced in its entirety.

Fremont Environmental
8305 6th St, PO Box 1289
Wellington CO 80549

Paul Henehan
Project Number: [none]
Project: PDC - Gus LD Pad

FS-06

6/3/2024 12:00:00AM

Analyte	Result	Min Detection Limit	Reporting Limit	Units	Dilution	Batch	Prepared	Analyzed	Notes
---------	--------	---------------------	-----------------	-------	----------	-------	----------	----------	-------

Origins Laboratory, Inc.
Y406041-06 (Soil)

Table 915 metals by EPA 6020B

Arsenic	3.31	0.282	mg/kg	10	B4F0346	06/03/2024	06/04/2024
Barium	101	9.74	"	"	"	"	"
Cadmium	0.125	0.0974	"	"	"	"	"
Copper	ND	9.74	"	"	"	"	"
Lead	7.19	0.974	"	"	"	"	"
Nickel	7.48	0.974	"	"	"	"	"
Selenium	ND	0.253	"	"	"	"	"
Silver	ND	0.0974	"	"	"	"	"
Zinc	ND	36.0	"	"	"	"	"

Total Metals 7196A

Hexavalent Chromium	ND	0.118	0.296	mg/kg dry	1	2623271	06/07/2024	06/11/2024	U
---------------------	----	-------	-------	-----------	---	---------	------------	------------	---

Origins Laboratory, Inc.



The results in this report apply to the samples analyzed in accordance with the chain of custody document. This analytical report must be reproduced in its entirety.

Fremont Environmental
8305 6th St, PO Box 1289
Wellington CO 80549

Paul Henehan
Project Number: [none]
Project: PDC - Gus LD Pad

FS-07

6/3/2024 12:00:00AM

Analyte	Result	Min Detection Limit	Reporting Limit	Units	Dilution	Batch	Prepared	Analyzed	Notes
---------	--------	---------------------	-----------------	-------	----------	-------	----------	----------	-------

Origins Laboratory, Inc.
Y406041-07 (Soil)

Boron (DTPA Sorbitol)

Boron	0.815	0.0986	mg/L	1	B4F0411	06/04/2024	06/05/2024	
-------	-------	--------	------	---	---------	------------	------------	--

DRO/ORO by EPA 8015D

Diesel (C10-C28)	ND	25.0	mg/kg	1	B4F0347	06/03/2024	06/04/2024	Ua
Residual Range Organics (C28-C40)	ND	100	"	"	"	"	"	Ua

Surrogate: o-Terphenyl	97.4 %	50-150	"	"	"	"	"	
------------------------	--------	--------	---	---	---	---	---	--

GBTEX+TMBs by 8260D

1,2,4-Trimethylbenzene	ND	0.00200	mg/kg	1	B4F0344	06/03/2024	06/04/2024	Ua
1,3,5-Trimethylbenzene	ND	0.00200	"	"	"	"	"	Ua
Benzene	ND	0.00200	"	"	"	"	"	Ua
Ethylbenzene	ND	0.00200	"	"	"	"	"	Ua
Toluene	ND	0.00200	"	"	"	"	"	Ua
Xylenes, total	ND	0.00200	"	"	"	"	"	Ua
Gasoline Range Hydrocarbons	ND	0.200	"	"	"	"	"	Ua

Surrogate: 1,2-Dichloroethane-d4	104 %	70-130	"	"	"	"	"	
----------------------------------	-------	--------	---	---	---	---	---	--

Origins Laboratory, Inc.



The results in this report apply to the samples analyzed in accordance with the chain of custody document. This analytical report must be reproduced in its entirety.

Fremont Environmental
8305 6th St, PO Box 1289
Wellington CO 80549

Paul Henehan
Project Number: [none]
Project: PDC - Gus LD Pad

FS-07

6/3/2024 12:00:00AM

Analyte	Result	Min Detection Limit	Reporting Limit	Units	Dilution	Batch	Prepared	Analyzed	Notes
---------	--------	---------------------	-----------------	-------	----------	-------	----------	----------	-------

Origins Laboratory, Inc. Y406041-07 (Soil)

GBTEX+TMBs by 8260D

Surrogate: Toluene-d8	98.7 %	70-130	B4F03 44	06/03/2024	06/04/2024
Surrogate: 4-Bromofluorobenzene	108 %	70-130	"	"	"

Metals by Saturated Paste by EPA 6010

Calcium	9.45	0.499	meq/L	10	[CALC]	06/04/2024	06/05/2024
Magnesium	4.80	0.823	"	"	"	"	"
Sodium	37.5	0.435	"	"	"	"	"

PAH by EPA 8270E

1-Methylnaphthalene	ND	0.002	mg/kg	1	B4F0345	06/03/2024	06/04/2024	Ua
2-Methylnaphthalene	ND	0.002	"	"	"	"	"	Ua
Acenaphthene	ND	0.020	"	"	"	"	"	Ua
Anthracene	ND	0.020	"	"	"	"	"	Ua
Benzo (a) anthracene	ND	0.005	"	"	"	"	"	Ua
Benzo (a) pyrene	ND	0.020	"	"	"	"	"	Ua
Benzo (b) fluoranthene	ND	0.020	"	"	"	"	"	Ua
Benzo (k) fluoranthene	ND	0.020	"	"	"	"	"	Ua
Chrysene	ND	0.020	"	"	"	"	"	Ua
Dibenz (a,h) anthracene	ND	0.020	"	"	"	"	"	Ua
Fluoranthene	ND	0.020	"	"	"	"	"	Ua

Origins Laboratory, Inc.



The results in this report apply to the samples analyzed in accordance with the chain of custody document. This analytical report must be reproduced in its entirety.

Fremont Environmental
8305 6th St, PO Box 1289
Wellington CO 80549

Paul Henehan
Project Number: [none]
Project: PDC - Gus LD Pad

FS-07

6/3/2024 12:00:00AM

Analyte	Result	Min Detection Limit	Reporting Limit	Units	Dilution	Batch	Prepared	Analyzed	Notes
---------	--------	---------------------	-----------------	-------	----------	-------	----------	----------	-------

Origins Laboratory, Inc. Y406041-07 (Soil)

PAH by EPA 8270E

Fluorene	ND	0.020	mg/kg	1	B4F0345	06/03/2024	06/04/2024	Ua
Indeno (1,2,3-cd) pyrene	ND	0.020	"	"	"	"	"	Ua
Naphthalene	ND	0.002	"	"	"	"	"	Ua
Pyrene	ND	0.020	"	"	"	"	"	Ua

Surrogate: Fluorene-d10	100 %	60-130	"	"	"
Surrogate: Anthracene-d10	97.1 %	60-130	"	"	"
Surrogate: Pyrene-d10	90.2 %	60-130	"	"	"
Surrogate: Benzo (a) pyrene-d12	99.5 %	60-130	"	"	"

pH in Soil by 9045D

pH	8.26	pH Units	1	B4F0424	06/04/2024	06/05/2024
----	------	----------	---	---------	------------	------------

SAR by 20B Saturated Paste

SAR	14.0	0.0100	SAR	1	B4F0418	06/04/2024	06/05/2024
-----	------	--------	-----	---	---------	------------	------------

Specific Conductance Mod. 9050A

Specific Conductance (EC)	4.90	0.00500	mmhos/cm	1	B4F0424	06/04/2024	06/05/2024
---------------------------	------	---------	----------	---	---------	------------	------------

Table 915 metals by EPA 6020B

Origins Laboratory, Inc.



The results in this report apply to the samples analyzed in accordance with the chain of custody document. This analytical report must be reproduced in its entirety.

Fremont Environmental
8305 6th St, PO Box 1289
Wellington CO 80549

Paul Henehan
Project Number: [none]
Project: PDC - Gus LD Pad

FS-07

6/3/2024 12:00:00AM

Analyte	Result	Min Detection Limit	Reporting Limit	Units	Dilution	Batch	Prepared	Analyzed	Notes
---------	--------	---------------------	-----------------	-------	----------	-------	----------	----------	-------

Origins Laboratory, Inc.
Y406041-07 (Soil)

Table 915 metals by EPA 6020B

Arsenic	3.26	0.269	mg/kg	10	B4F0346	06/03/2024	06/04/2024
Barium	164	9.28	"	"	"	"	"
Cadmium	0.117	0.0928	"	"	"	"	"
Copper	10.7	9.28	"	"	"	"	"
Lead	7.16	0.928	"	"	"	"	"
Nickel	7.54	0.928	"	"	"	"	"
Selenium	ND	0.241	"	"	"	"	"
Silver	ND	0.0928	"	"	"	"	"
Zinc	34.8	34.3	"	"	"	"	"

Total Metals by 7196A

Hexavalent Chromium	ND	0.106	0.265	mg/kg dry	1	2631125	06/24/2024	06/25/2024	U
---------------------	----	-------	-------	-----------	---	---------	------------	------------	---

Origins Laboratory, Inc.



The results in this report apply to the samples analyzed in accordance with the chain of custody document. This analytical report must be reproduced in its entirety.

Fremont Environmental
8305 6th St, PO Box 1289
Wellington CO 80549

Paul Henehan
Project Number: [none]
Project: PDC - Gus LD Pad

FS-08

6/3/2024 12:00:00AM

Analyte	Result	Min Detection Limit	Reporting Limit	Units	Dilution	Batch	Prepared	Analyzed	Notes
---------	--------	---------------------	-----------------	-------	----------	-------	----------	----------	-------

Origins Laboratory, Inc.
Y406041-08 (Soil)

Boron (DTPA Sorbitol)

Boron	1.47	0.0991	mg/L	1	B4F0411	06/04/2024	06/05/2024	
-------	------	--------	------	---	---------	------------	------------	--

DRO/ORO by EPA 8015D

Diesel (C10-C28)	ND	25.0	mg/kg	1	B4F0347	06/03/2024	06/04/2024	Ua
Residual Range Organics (C28-C40)	ND	100	"	"	"	"	"	Ua

Surrogate: o-Terphenyl	92.7 %	50-150	"	"	"	"	"	
------------------------	--------	--------	---	---	---	---	---	--

GBTEX+TMBs by 8260D

1,2,4-Trimethylbenzene	ND	0.00200	mg/kg	1	B4F0344	06/03/2024	06/04/2024	Ua
1,3,5-Trimethylbenzene	ND	0.00200	"	"	"	"	"	Ua
Benzene	ND	0.00200	"	"	"	"	"	Ua
Ethylbenzene	ND	0.00200	"	"	"	"	"	Ua
Toluene	ND	0.00200	"	"	"	"	"	Ua
Xylenes, total	ND	0.00200	"	"	"	"	"	Ua
Gasoline Range Hydrocarbons	ND	0.200	"	"	"	"	"	Ua

Surrogate: 1,2-Dichloroethane-d4	104 %	70-130	"	"	"	"	"	
----------------------------------	-------	--------	---	---	---	---	---	--

Origins Laboratory, Inc.



The results in this report apply to the samples analyzed in accordance with the chain of custody document. This analytical report must be reproduced in its entirety.

Fremont Environmental
8305 6th St, PO Box 1289
Wellington CO 80549

Paul Henehan
Project Number: [none]
Project: PDC - Gus LD Pad

FS-08

6/3/2024 12:00:00AM

Analyte	Result	Min Detection Limit	Reporting Limit	Units	Dilution	Batch	Prepared	Analyzed	Notes
---------	--------	---------------------	-----------------	-------	----------	-------	----------	----------	-------

Origins Laboratory, Inc.
Y406041-08 (Soil)

GBTEX+TMBs by 8260D

Surrogate: Toluene-d8	95.4 %	70-130	B4F03 44	06/03/2024	06/04/2024
Surrogate: 4-Bromofluorobenzene	106 %	70-130	"	"	"

Metals by Saturated Paste by EPA 6010

Calcium	34.0	0.499	meq/L	10	[CALC]	06/04/2024	06/05/2024
Magnesium	11.9	0.823	"	"	"	"	"
Sodium	71.8	0.435	"	"	"	"	"

PAH by EPA 8270E

1-Methylnaphthalene	ND	0.002	mg/kg	1	B4F0345	06/03/2024	06/04/2024	Ua
2-Methylnaphthalene	ND	0.002	"	"	"	"	"	Ua
Acenaphthene	ND	0.020	"	"	"	"	"	Ua
Anthracene	ND	0.020	"	"	"	"	"	Ua
Benzo (a) anthracene	ND	0.005	"	"	"	"	"	Ua
Benzo (a) pyrene	ND	0.020	"	"	"	"	"	Ua
Benzo (b) fluoranthene	ND	0.020	"	"	"	"	"	Ua
Benzo (k) fluoranthene	ND	0.020	"	"	"	"	"	Ua
Chrysene	ND	0.020	"	"	"	"	"	Ua
Dibenz (a,h) anthracene	ND	0.020	"	"	"	"	"	Ua
Fluoranthene	ND	0.020	"	"	"	"	"	Ua

Origins Laboratory, Inc.



The results in this report apply to the samples analyzed in accordance with the chain of custody document. This analytical report must be reproduced in its entirety.

Fremont Environmental
8305 6th St, PO Box 1289
Wellington CO 80549

Paul Henehan
Project Number: [none]
Project: PDC - Gus LD Pad

FS-08

6/3/2024 12:00:00AM

Analyte	Result	Min Detection Limit	Reporting Limit	Units	Dilution	Batch	Prepared	Analyzed	Notes
---------	--------	---------------------	-----------------	-------	----------	-------	----------	----------	-------

Origins Laboratory, Inc. Y406041-08 (Soil)

PAH by EPA 8270E

Fluorene	ND	0.020	mg/kg	1	B4F0345	06/03/2024	06/04/2024	Ua
Indeno (1,2,3-cd) pyrene	ND	0.020	"	"	"	"	"	Ua
Naphthalene	ND	0.002	"	"	"	"	"	Ua
Pyrene	ND	0.020	"	"	"	"	"	Ua

Surrogate: Fluorene-d10	99.0 %	60-130	"	"	"
Surrogate: Anthracene-d10	94.8 %	60-130	"	"	"
Surrogate: Pyrene-d10	96.5 %	60-130	"	"	"
Surrogate: Benzo (a) pyrene-d12	105 %	60-130	"	"	"

pH in Soil by 9045D

pH	7.96	pH Units	1	B4F0424	06/04/2024	06/05/2024
----	------	----------	---	---------	------------	------------

SAR by 20B Saturated Paste

SAR	15.0	0.0100	SAR	1	B4F0418	06/04/2024	06/05/2024
-----	------	--------	-----	---	---------	------------	------------

Specific Conductance Mod. 9050A

Specific Conductance (EC)	11.3	0.00500	mmhos/cm	1	B4F0424	06/04/2024	06/05/2024
---------------------------	------	---------	----------	---	---------	------------	------------

Table 915 metals by EPA 6020B

Origins Laboratory, Inc.



The results in this report apply to the samples analyzed in accordance with the chain of custody document. This analytical report must be reproduced in its entirety.

Fremont Environmental
8305 6th St, PO Box 1289
Wellington CO 80549

Paul Henehan
Project Number: [none]
Project: PDC - Gus LD Pad

FS-08

6/3/2024 12:00:00AM

Analyte	Result	Min Detection Limit	Reporting Limit	Units	Dilution	Batch	Prepared	Analyzed	Notes
---------	--------	---------------------	-----------------	-------	----------	-------	----------	----------	-------

Origins Laboratory, Inc.
Y406041-08 (Soil)

Table 915 metals by EPA 6020B

Arsenic	2.68	0.249	mg/kg	10	B4F0346	06/03/2024	06/04/2024
Barium	60.6	8.58	"	"	"	"	"
Cadmium	0.0901	0.0858	"	"	"	"	"
Copper	ND	8.58	"	"	"	"	"
Lead	5.58	0.858	"	"	"	"	"
Nickel	6.61	0.858	"	"	"	"	"
Selenium	ND	0.223	"	"	"	"	"
Silver	ND	0.0858	"	"	"	"	"
Zinc	ND	31.7	"	"	"	"	"

Total Metals by 7196A

Hexavalent Chromium	ND	0.113	0.282	mg/kg dry	1	2631125	06/24/2024	06/25/2024	U
---------------------	----	-------	-------	-----------	---	---------	------------	------------	---

Origins Laboratory, Inc.



The results in this report apply to the samples analyzed in accordance with the chain of custody document. This analytical report must be reproduced in its entirety.

Fremont Environmental
8305 6th St, PO Box 1289
Wellington CO 80549

Paul Henehan
Project Number: [none]
Project: PDC - Gus LD Pad

FS-09

6/3/2024 12:00:00AM

Analyte	Result	Min Detection Limit	Reporting Limit	Units	Dilution	Batch	Prepared	Analyzed	Notes
---------	--------	---------------------	-----------------	-------	----------	-------	----------	----------	-------

Origins Laboratory, Inc. Y406041-09 (Soil)

Boron (DTPA Sorbitol)

Boron	0.413	0.101	mg/L	1	B4F0412	06/04/2024	06/05/2024	
-------	-------	-------	------	---	---------	------------	------------	--

DRO/ORO by EPA 8015D

Diesel (C10-C28)	ND	25.0	mg/kg	1	B4F0347	06/03/2024	06/04/2024	Ua
Residual Range Organics (C28-C40)	ND	100	"	"	"	"	"	Ua

Surrogate: o-Terphenyl	95.5 %	50-150	"	"	"	"	"	"
------------------------	--------	--------	---	---	---	---	---	---

GBTEX+TMBs by 8260D

1,2,4-Trimethylbenzene	ND	0.00200	mg/kg	1	B4F0344	06/03/2024	06/04/2024	Ua
1,3,5-Trimethylbenzene	ND	0.00200	"	"	"	"	"	Ua
Benzene	ND	0.00200	"	"	"	"	"	Ua
Ethylbenzene	ND	0.00200	"	"	"	"	"	Ua
Toluene	ND	0.00200	"	"	"	"	"	Ua
Xylenes, total	ND	0.00200	"	"	"	"	"	Ua
Gasoline Range Hydrocarbons	ND	0.200	"	"	"	"	"	Ua

Surrogate: 1,2-Dichloroethane-d4	107 %	70-130	"	"	"	"	"	"
----------------------------------	-------	--------	---	---	---	---	---	---

Origins Laboratory, Inc.



The results in this report apply to the samples analyzed in accordance with the chain of custody document. This analytical report must be reproduced in its entirety.

Fremont Environmental
8305 6th St, PO Box 1289
Wellington CO 80549

Paul Henehan
Project Number: [none]
Project: PDC - Gus LD Pad

FS-09

6/3/2024 12:00:00AM

Analyte	Result	Min Detection Limit	Reporting Limit	Units	Dilution	Batch	Prepared	Analyzed	Notes
---------	--------	---------------------	-----------------	-------	----------	-------	----------	----------	-------

Origins Laboratory, Inc. Y406041-09 (Soil)

GBTEX+TMBs by 8260D

Surrogate: Toluene-d8	98.7 %	70-130	B4F0344	06/03/2024	06/04/2024
Surrogate: 4-Bromofluorobenzene	107 %	70-130	"	"	"

Metals by Saturated Paste by EPA 6010

Calcium	4.50	0.499	meq/L	10	[CALC]	06/04/2024	06/05/2024
Magnesium	1.91	0.823	"	"	"	"	"
Sodium	18.7	0.435	"	"	"	"	"

PAH by EPA 8270E

1-Methylnaphthalene	ND	0.002	mg/kg	1	B4F0345	06/03/2024	06/04/2024	Ua
2-Methylnaphthalene	ND	0.002	"	"	"	"	"	Ua
Acenaphthene	ND	0.020	"	"	"	"	"	Ua
Anthracene	ND	0.020	"	"	"	"	"	Ua
Benzo (a) anthracene	ND	0.005	"	"	"	"	"	Ua
Benzo (a) pyrene	ND	0.020	"	"	"	"	"	Ua
Benzo (b) fluoranthene	ND	0.020	"	"	"	"	"	Ua
Benzo (k) fluoranthene	ND	0.020	"	"	"	"	"	Ua
Chrysene	ND	0.020	"	"	"	"	"	Ua
Dibenz (a,h) anthracene	ND	0.020	"	"	"	"	"	Ua
Fluoranthene	ND	0.020	"	"	"	"	"	Ua

Origins Laboratory, Inc.



The results in this report apply to the samples analyzed in accordance with the chain of custody document. This analytical report must be reproduced in its entirety.

Fremont Environmental

8305 6th St, PO Box 1289

Wellington CO 80549

Paul Henehan

Project Number: [none]

Project: PDC - Gus LD Pad

FS-09

6/3/2024 12:00:00AM

Analyte	Result	Min Detection Limit	Reporting Limit	Units	Dilution	Batch	Prepared	Analyzed	Notes
---------	--------	---------------------	-----------------	-------	----------	-------	----------	----------	-------

Origins Laboratory, Inc.

Y406041-09 (Soil)

PAH by EPA 8270E

Fluorene	ND	0.020	mg/kg	1	B4F0345	06/03/2024	06/04/2024	Ua
Indeno (1,2,3-cd) pyrene	ND	0.020	"	"	"	"	"	Ua
Naphthalene	ND	0.002	"	"	"	"	"	Ua
Pyrene	ND	0.020	"	"	"	"	"	Ua

Surrogate: Fluorene-d10	100 %	60-130	"	"	"
Surrogate: Anthracene-d10	100 %	60-130	"	"	"
Surrogate: Pyrene-d10	97.4 %	60-130	"	"	"
Surrogate: Benzo (a) pyrene-d12	97.5 %	60-130	"	"	"

pH in Soil by 9045D

pH	8.40	pH Units	1	B4F0424	06/04/2024	06/05/2024
----	------	----------	---	---------	------------	------------

SAR by 20B Saturated Paste

SAR	10.5	0.0100	SAR	1	B4F0418	06/04/2024	06/05/2024
-----	------	--------	-----	---	---------	------------	------------

Specific Conductance Mod. 9050A

Specific Conductance (EC)	2.43	0.00500	mmhos/cm	1	B4F0424	06/04/2024	06/05/2024
---------------------------	------	---------	----------	---	---------	------------	------------

Table 915 metals by EPA 6020B

Origins Laboratory, Inc.



The results in this report apply to the samples analyzed in accordance with the chain of custody document. This analytical report must be reproduced in its entirety.

Fremont Environmental
8305 6th St, PO Box 1289
Wellington CO 80549

Paul Henehan
Project Number: [none]
Project: PDC - Gus LD Pad

FS-09

6/3/2024 12:00:00AM

Analyte	Result	Min Detection Limit	Reporting Limit	Units	Dilution	Batch	Prepared	Analyzed	Notes
---------	--------	---------------------	-----------------	-------	----------	-------	----------	----------	-------

Origins Laboratory, Inc.
Y406041-09 (Soil)

Table 915 metals by EPA 6020B

Arsenic	2.94	0.272	mg/kg	10	B4F0346	06/03/2024	06/04/2024
Barium	149	9.38	"	"	"	"	"
Cadmium	0.101	0.0938	"	"	"	"	"
Copper	ND	9.38	"	"	"	"	"
Lead	6.41	0.938	"	"	"	"	"
Nickel	7.11	0.938	"	"	"	"	"
Selenium	ND	0.244	"	"	"	"	"
Silver	ND	0.0938	"	"	"	"	"
Zinc	ND	34.7	"	"	"	"	"

Total Metals 7196A

Hexavalent Chromium	ND	0.142	0.354	mg/kg dry	1	2623271	06/07/2024	06/11/2024	U
---------------------	----	-------	-------	-----------	---	---------	------------	------------	---

Origins Laboratory, Inc.



The results in this report apply to the samples analyzed in accordance with the chain of custody document. This analytical report must be reproduced in its entirety.

Fremont Environmental
8305 6th St, PO Box 1289
Wellington CO 80549

Paul Henehan
Project Number: [none]
Project: PDC - Gus LD Pad

SS-01

6/3/2024 12:00:00AM

Analyte	Result	Min Detection Limit	Reporting Limit	Units	Dilution	Batch	Prepared	Analyzed	Notes
---------	--------	---------------------	-----------------	-------	----------	-------	----------	----------	-------

Origins Laboratory, Inc. Y406041-10 (Soil)

Boron (DTPA Sorbitol)

Boron	3.71	0.0982	mg/L	1	B4F0412	06/04/2024	06/05/2024	
-------	------	--------	------	---	---------	------------	------------	--

DRO/ORO by EPA 8015D

Diesel (C10-C28)	ND	25.0	mg/kg	1	B4F0347	06/03/2024	06/04/2024	Ua
Residual Range Organics (C28-C40)	ND	100	"	"	"	"	"	Ua

Surrogate: o-Terphenyl	92.5 %	50-150			"	"	"	
------------------------	--------	--------	--	--	---	---	---	--

GBTEX+TMBs by 8260D

1,2,4-Trimethylbenzene	ND	0.00200	mg/kg	1	B4F0344	06/03/2024	06/04/2024	Ua
1,3,5-Trimethylbenzene	ND	0.00200	"	"	"	"	"	Ua
Benzene	ND	0.00200	"	"	"	"	"	Ua
Ethylbenzene	ND	0.00200	"	"	"	"	"	Ua
Toluene	ND	0.00200	"	"	"	"	"	Ua
Xylenes, total	ND	0.00200	"	"	"	"	"	Ua
Gasoline Range Hydrocarbons	ND	0.200	"	"	"	"	"	Ua

Surrogate: 1,2-Dichloroethane-d4	106 %	70-130			"	"	"	
----------------------------------	-------	--------	--	--	---	---	---	--

Origins Laboratory, Inc.



The results in this report apply to the samples analyzed in accordance with the chain of custody document. This analytical report must be reproduced in its entirety.

Fremont Environmental
8305 6th St, PO Box 1289
Wellington CO 80549

Paul Henehan
Project Number: [none]
Project: PDC - Gus LD Pad

SS-01

6/3/2024 12:00:00AM

Analyte	Result	Min Detection Limit	Reporting Limit	Units	Dilution	Batch	Prepared	Analyzed	Notes
---------	--------	---------------------	-----------------	-------	----------	-------	----------	----------	-------

Origins Laboratory, Inc. Y406041-10 (Soil)

GBTEX+TMBs by 8260D

Surrogate: Toluene-d8	96.7 %	70-130	B4F0344	06/03/2024	06/04/2024
Surrogate: 4-Bromofluorobenzene	104 %	70-130	"	"	"

Metals by Saturated Paste by EPA 6010

Calcium	12.6	0.499	meq/L	10	[CALC]	06/04/2024	06/05/2024
Magnesium	4.12	0.823	"	"	"	"	"
Sodium	65.7	0.435	"	"	"	"	"

PAH by EPA 8270E

1-Methylnaphthalene	ND	0.002	mg/kg	1	B4F0345	06/03/2024	06/04/2024	Ua
2-Methylnaphthalene	ND	0.002	"	"	"	"	"	Ua
Acenaphthene	ND	0.020	"	"	"	"	"	Ua
Anthracene	ND	0.020	"	"	"	"	"	Ua
Benzo (a) anthracene	ND	0.005	"	"	"	"	"	Ua
Benzo (a) pyrene	ND	0.020	"	"	"	"	"	Ua
Benzo (b) fluoranthene	ND	0.020	"	"	"	"	"	Ua
Benzo (k) fluoranthene	ND	0.020	"	"	"	"	"	Ua
Chrysene	ND	0.020	"	"	"	"	"	Ua
Dibenz (a,h) anthracene	ND	0.020	"	"	"	"	"	Ua
Fluoranthene	ND	0.020	"	"	"	"	"	Ua

Origins Laboratory, Inc.



The results in this report apply to the samples analyzed in accordance with the chain of custody document. This analytical report must be reproduced in its entirety.

Fremont Environmental
8305 6th St, PO Box 1289
Wellington CO 80549

Paul Henehan
Project Number: [none]
Project: PDC - Gus LD Pad

SS-01

6/3/2024 12:00:00AM

Analyte	Result	Min Detection Limit	Reporting Limit	Units	Dilution	Batch	Prepared	Analyzed	Notes
---------	--------	---------------------	-----------------	-------	----------	-------	----------	----------	-------

Origins Laboratory, Inc. Y406041-10 (Soil)

PAH by EPA 8270E

Fluorene	ND	0.020	mg/kg	1	B4F0345	06/03/2024	06/04/2024	Ua
Indeno (1,2,3-cd) pyrene	ND	0.020	"	"	"	"	"	Ua
Naphthalene	ND	0.002	"	"	"	"	"	Ua
Pyrene	ND	0.020	"	"	"	"	"	Ua

Surrogate: Fluorene-d10	104 %	60-130	"	"	"
Surrogate: Anthracene-d10	93.6 %	60-130	"	"	"
Surrogate: Pyrene-d10	101 %	60-130	"	"	"
Surrogate: Benzo (a) pyrene-d12	98.2 %	60-130	"	"	"

pH in Soil by 9045D

pH	8.06	pH Units	1	B4F0424	06/04/2024	06/05/2024
----	------	----------	---	---------	------------	------------

SAR by 20B Saturated Paste

SAR	22.7	0.0100	SAR	1	B4F0418	06/04/2024	06/05/2024
-----	------	--------	-----	---	---------	------------	------------

Specific Conductance Mod. 9050A

Specific Conductance (EC)	8.65	0.00500	mmhos/cm	1	B4F0424	06/04/2024	06/05/2024
---------------------------	------	---------	----------	---	---------	------------	------------

Table 915 metals by EPA 6020B

Origins Laboratory, Inc.



The results in this report apply to the samples analyzed in accordance with the chain of custody document. This analytical report must be reproduced in its entirety.

Fremont Environmental
8305 6th St, PO Box 1289
Wellington CO 80549

Paul Henehan
Project Number: [none]
Project: PDC - Gus LD Pad

SS-01

6/3/2024 12:00:00AM

Analyte	Result	Min Detection Limit	Reporting Limit	Units	Dilution	Batch	Prepared	Analyzed	Notes
---------	--------	---------------------	-----------------	-------	----------	-------	----------	----------	-------

Origins Laboratory, Inc.
Y406041-10 (Soil)

Table 915 metals by EPA 6020B

Arsenic	3.81	0.271	mg/kg	10	B4F0346	06/03/2024	06/04/2024
Barium	127	9.35	"	"	"	"	"
Cadmium	0.127	0.0935	"	"	"	"	"
Copper	9.53	9.35	"	"	"	"	"
Lead	8.06	0.935	"	"	"	"	"
Nickel	8.45	0.935	"	"	"	"	"
Selenium	ND	0.243	"	"	"	"	"
Silver	ND	0.0935	"	"	"	"	"
Zinc	35.1	34.6	"	"	"	"	"

Total Metals by 7196A

Hexavalent Chromium	ND	0.139	0.348	mg/kg dry	1	2631125	06/24/2024	06/25/2024	U
---------------------	----	-------	-------	-----------	---	---------	------------	------------	---

Origins Laboratory, Inc.



The results in this report apply to the samples analyzed in accordance with the chain of custody document. This analytical report must be reproduced in its entirety.

Fremont Environmental
8305 6th St, PO Box 1289
Wellington CO 80549

Paul Henehan
Project Number: [none]
Project: PDC - Gus LD Pad

SS-02

6/3/2024 12:00:00AM

Analyte	Result	Min Detection Limit	Reporting Limit	Units	Dilution	Batch	Prepared	Analyzed	Notes
---------	--------	---------------------	-----------------	-------	----------	-------	----------	----------	-------

Origins Laboratory, Inc. Y406041-11 (Soil)

Boron (DTPA Sorbitol)

Boron	ND	0.0996	mg/L	1	B4F0412	06/04/2024	06/05/2024	
-------	----	--------	------	---	---------	------------	------------	--

DRO/ORO by EPA 8015D

Diesel (C10-C28)	ND	25.0	mg/kg	1	B4F0347	06/03/2024	06/04/2024	Ua
Residual Range Organics (C28-C40)	ND	100	"	"	"	"	"	Ua

Surrogate: o-Terphenyl	93.5 %	50-150	"	"	"	"	"	
------------------------	--------	--------	---	---	---	---	---	--

GBTEX+TMBs by 8260D

1,2,4-Trimethylbenzene	ND	0.00200	mg/kg	1	B4F0344	06/03/2024	06/04/2024	Ua
1,3,5-Trimethylbenzene	ND	0.00200	"	"	"	"	"	Ua
Benzene	ND	0.00200	"	"	"	"	"	Ua
Ethylbenzene	ND	0.00200	"	"	"	"	"	Ua
Toluene	ND	0.00200	"	"	"	"	"	Ua
Xylenes, total	ND	0.00200	"	"	"	"	"	Ua
Gasoline Range Hydrocarbons	ND	0.200	"	"	"	"	"	Ua

Surrogate: 1,2-Dichloroethane-d4	110 %	70-130	"	"	"	"	"	
----------------------------------	-------	--------	---	---	---	---	---	--

Origins Laboratory, Inc.



The results in this report apply to the samples analyzed in accordance with the chain of custody document. This analytical report must be reproduced in its entirety.

Fremont Environmental
8305 6th St, PO Box 1289
Wellington CO 80549

Paul Henehan
Project Number: [none]
Project: PDC - Gus LD Pad

SS-02

6/3/2024 12:00:00AM

Analyte	Result	Min Detection Limit	Reporting Limit	Units	Dilution	Batch	Prepared	Analyzed	Notes
---------	--------	---------------------	-----------------	-------	----------	-------	----------	----------	-------

Origins Laboratory, Inc. Y406041-11 (Soil)

GBTEX+TMBs by 8260D

Surrogate: Toluene-d8	98.1 %	70-130	B4F03 44	06/03/2024	06/04/2024
Surrogate: 4-Bromofluorobenzene	107 %	70-130	"	"	"

Metals by Saturated Paste by EPA 6010

Calcium	2.47	0.499	meq/L	10	[CALC]	06/04/2024	06/05/2024
Magnesium	1.22	0.823	"	"	"	"	"
Sodium	19.8	0.435	"	"	"	"	"

PAH by EPA 8270E

1-Methylnaphthalene	ND	0.002	mg/kg	1	B4F0345	06/03/2024	06/04/2024	Ua
2-Methylnaphthalene	ND	0.002	"	"	"	"	"	Ua
Acenaphthene	ND	0.020	"	"	"	"	"	Ua
Anthracene	ND	0.020	"	"	"	"	"	Ua
Benzo (a) anthracene	ND	0.005	"	"	"	"	"	Ua
Benzo (a) pyrene	ND	0.020	"	"	"	"	"	Ua
Benzo (b) fluoranthene	ND	0.020	"	"	"	"	"	Ua
Benzo (k) fluoranthene	ND	0.020	"	"	"	"	"	Ua
Chrysene	ND	0.020	"	"	"	"	"	Ua
Dibenz (a,h) anthracene	ND	0.020	"	"	"	"	"	Ua
Fluoranthene	ND	0.020	"	"	"	"	"	Ua

Origins Laboratory, Inc.



The results in this report apply to the samples analyzed in accordance with the chain of custody document. This analytical report must be reproduced in its entirety.

Fremont Environmental

8305 6th St, PO Box 1289

Wellington CO 80549

Paul Henehan

Project Number: [none]

Project: PDC - Gus LD Pad

SS-02

6/3/2024 12:00:00AM

Analyte	Result	Min Detection Limit	Reporting Limit	Units	Dilution	Batch	Prepared	Analyzed	Notes
---------	--------	---------------------	-----------------	-------	----------	-------	----------	----------	-------

Origins Laboratory, Inc.

Y406041-11 (Soil)

PAH by EPA 8270E

Fluorene	ND	0.020	mg/kg	1	B4F0345	06/03/2024	06/04/2024	Ua
Indeno (1,2,3-cd) pyrene	ND	0.020	"	"	"	"	"	Ua
Naphthalene	ND	0.002	"	"	"	"	"	Ua
Pyrene	ND	0.020	"	"	"	"	"	Ua

Surrogate: Fluorene-d10	105 %	60-130	"	"	"
Surrogate: Anthracene-d10	98.2 %	60-130	"	"	"
Surrogate: Pyrene-d10	93.4 %	60-130	"	"	"
Surrogate: Benzo (a) pyrene-d12	98.7 %	60-130	"	"	"

pH in Soil by 9045D

pH	8.26	pH Units	1	B4F0425	06/04/2024	06/05/2024
----	------	----------	---	---------	------------	------------

SAR by 20B Saturated Paste

SAR	14.6	0.0100	SAR	1	B4F0419	06/04/2024	06/05/2024
-----	------	--------	-----	---	---------	------------	------------

Specific Conductance Mod. 9050A

Specific Conductance (EC)	2.30	0.00500	mmhos/cm	1	B4F0425	06/04/2024	06/05/2024
---------------------------	------	---------	----------	---	---------	------------	------------

Table 915 metals by EPA 6020B

Origins Laboratory, Inc.



The results in this report apply to the samples analyzed in accordance with the chain of custody document. This analytical report must be reproduced in its entirety.

Fremont Environmental
8305 6th St, PO Box 1289
Wellington CO 80549

Paul Henehan
Project Number: [none]
Project: PDC - Gus LD Pad

SS-02

6/3/2024 12:00:00AM

Analyte	Result	Min Detection Limit	Reporting Limit	Units	Dilution	Batch	Prepared	Analyzed	Notes
---------	--------	---------------------	-----------------	-------	----------	-------	----------	----------	-------

Origins Laboratory, Inc.
Y406041-11 (Soil)

Table 915 metals by EPA 6020B

Arsenic	2.79	0.282	mg/kg	10	B4F0346	06/03/2024	06/04/2024
Barium	25.3	9.74	"	"	"	"	"
Cadmium	0.173	0.0974	"	"	"	"	"
Copper	12.1	9.74	"	"	"	"	"
Lead	13.9	0.974	"	"	"	"	"
Nickel	8.84	0.974	"	"	"	"	"
Selenium	ND	0.253	"	"	"	"	"
Silver	ND	0.0974	"	"	"	"	"
Zinc	37.1	36.0	"	"	"	"	"

Total Metals by 7196A

Hexavalent Chromium	ND	0.118	0.296	mg/kg dry	1	2631125	06/24/2024	06/25/2024	U
---------------------	----	-------	-------	-----------	---	---------	------------	------------	---

Origins Laboratory, Inc.



The results in this report apply to the samples analyzed in accordance with the chain of custody document. This analytical report must be reproduced in its entirety.

Fremont Environmental
8305 6th St, PO Box 1289
Wellington CO 80549

Paul Henehan
Project Number: [none]
Project: PDC - Gus LD Pad

Volatile Organic Compounds by GC/MS SW846 8260D - Quality Control
Origins Laboratory, Inc.

Analyte	Result	Reporting Limit	Units	Spike Level	Source Result	%REC	%REC Limits	RPD	RPD Limit	Notes
Batch B4F0344 - EPA 5030 (soil)										
Blank (B4F0344-BLK1)					Prepared: 06/03/2024 Analyzed: 06/03/2024					
1,2,4-Trimethylbenzene	ND	0.00200	mg/kg							Ua
1,3,5-Trimethylbenzene	ND	0.00200	"							Ua
Benzene	ND	0.00200	"							Ua
Ethylbenzene	ND	0.00200	"							Ua
Naphthalene	ND	0.00380	"							Ua
Toluene	ND	0.00200	"							Ua
Xylenes, total	ND	0.00200	"							Ua
Gasoline Range Hydrocarbons	ND	0.200	"							Ua
Surrogate: 1,2-Dichloroethane-d4	0.12		"	0.125		94.8	70-130			
Surrogate: Toluene-d8	0.12		"	0.125		99.0	70-130			
Surrogate: 4-Bromofluorobenzene	0.13		"	0.125		103	70-130			

Origins Laboratory, Inc.



The results in this report apply to the samples analyzed in accordance with the chain of custody document. This analytical report must be reproduced in its entirety.

Fremont Environmental
8305 6th St, PO Box 1289
Wellington CO 80549

Paul Henehan
Project Number: [none]
Project: PDC - Gus LD Pad

Volatile Organic Compounds by GC/MS SW846 8260D - Quality Control
Origins Laboratory, Inc.

Analyte	Result	Reporting Limit	Units	Spike Level	Source Result	%REC	%REC Limits	RPD	RPD Limit	Notes
Batch B4F0344 - EPA 5030 (soil)										
LCS (B4F0344-BS1)					Prepared: 06/03/2024 Analyzed: 06/03/2024					
1,2,4-Trimethylbenzene	0.108	0.00200	mg/kg	0.100		108	70-130			
1,3,5-Trimethylbenzene	0.106	0.00200	"	0.100		106	70-130			
Benzene	0.101	0.00200	"	0.100		101	70-130			
Ethylbenzene	0.103	0.00200	"	0.100		103	70-130			
Naphthalene	0.0984	0.00380	"	0.100		98.4	70-130			
Toluene	0.0954	0.00200	"	0.100		95.4	70-130			
o-Xylene	0.106	0.00200	"	0.100		106	70-130			
m,p-Xylene	0.207	0.00400	"	0.200		103	70-130			
Surrogate: 1,2-Dichloroethane-d4	0.12		"	0.125		92.2	70-130			
Surrogate: Toluene-d8	0.12		"	0.125		97.2	70-130			
Surrogate: 4-Bromofluorobenzene	0.13		"	0.125		101	70-130			

Origins Laboratory, Inc.



The results in this report apply to the samples analyzed in accordance with the chain of custody document. This analytical report must be reproduced in its entirety.

Fremont Environmental
8305 6th St, PO Box 1289
Wellington CO 80549

Paul Henehan
Project Number: [none]
Project: PDC - Gus LD Pad

Volatile Organic Compounds by GC/MS SW846 8260D - Quality Control

Origins Laboratory, Inc.

Analyte	Result	Reporting Limit	Units	Spike Level	Source Result	%REC	%REC Limits	RPD	RPD Limit	Notes
Batch B4F0344 - EPA 5030 (soil)										
Matrix Spike (B4F0344-MS1)		Source: Y406038-05			Prepared: 06/03/2024 Analyzed: 06/03/2024					
1,2,4-Trimethylbenzene	0.0993	0.00200	mg/kg	0.100	ND	99.3	70-130			
1,3,5-Trimethylbenzene	0.0984	0.00200	"	0.100	ND	98.4	70-130			
Benzene	0.0921	0.00200	"	0.100	ND	92.1	70-130			
Ethylbenzene	0.0968	0.00200	"	0.100	ND	96.8	70-130			
Naphthalene	0.0888	0.00380	"	0.100	0.00142	87.4	70-130			
Toluene	0.0876	0.00200	"	0.100	ND	87.6	70-130			
o-Xylene	0.101	0.00200	"	0.100	ND	101	70-130			
m,p-Xylene	0.192	0.00400	"	0.200	ND	96.0	70-130			
Surrogate: 1,2-Dichloroethane-d4	0.12		"	0.125		93.0	70-130			
Surrogate: Toluene-d8	0.12		"	0.125		97.9	70-130			
Surrogate: 4-Bromofluorobenzene	0.13		"	0.125		103	70-130			

Origins Laboratory, Inc.



The results in this report apply to the samples analyzed in accordance with the chain of custody document. This analytical report must be reproduced in its entirety.

Fremont Environmental
8305 6th St, PO Box 1289
Wellington CO 80549

Paul Henehan
Project Number: [none]
Project: PDC - Gus LD Pad

Volatile Organic Compounds by GC/MS SW846 8260D - Quality Control
Origins Laboratory, Inc.

Analyte	Result	Reporting Limit	Units	Spike Level	Source Result	%REC	%REC Limits	RPD	RPD Limit	Notes
Batch B4F0344 - EPA 5030 (soil)										
Matrix Spike Dup (B4F0344-MSD1)			Source: Y406038-05			Prepared: 06/03/2024 Analyzed: 06/03/2024				
1,2,4-Trimethylbenzene	0.0967	0.00200	mg/kg	0.100	ND	96.7	70-130	2.67	20	
1,3,5-Trimethylbenzene	0.0971	0.00200	"	0.100	ND	97.1	70-130	1.33	20	
Benzene	0.0893	0.00200	"	0.100	ND	89.3	70-130	3.04	20	
Ethylbenzene	0.0954	0.00200	"	0.100	ND	95.4	70-130	1.46	20	
Naphthalene	0.0878	0.00380	"	0.100	0.00142	86.3	70-130	1.22	20	
Toluene	0.0872	0.00200	"	0.100	ND	87.2	70-130	0.458	20	
o-Xylene	0.0992	0.00200	"	0.100	ND	99.2	70-130	1.58	20	
m,p-Xylene	0.190	0.00400	"	0.200	ND	95.0	70-130	1.05	20	
Surrogate: 1,2-Dichloroethane-d4	0.11		"	0.125		91.3	70-130			
Surrogate: Toluene-d8	0.12		"	0.125		99.3	70-130			
Surrogate: 4-Bromofluorobenzene	0.13		"	0.125		102	70-130			

Origins Laboratory, Inc.



The results in this report apply to the samples analyzed in accordance with the chain of custody document. This analytical report must be reproduced in its entirety.

Fremont Environmental
8305 6th St, PO Box 1289
Wellington CO 80549

Paul Henehan
Project Number: [none]
Project: PDC - Gus LD Pad

Volatile Organic Compounds by GC/MS SW846 8260D - Quality Control
Origins Laboratory, Inc.

Analyte	Result	Reporting Limit	Units	Spike Level	Source Result	%REC	%REC Limits	RPD	RPD Limit	Notes
---------	--------	-----------------	-------	-------------	---------------	------	-------------	-----	-----------	-------

Batch B4F0347 - EPA 3550B

Blank (B4F0347-BLK1)

Prepared: 06/03/2024 Analyzed: 06/04/2024

Diesel (C10-C28)	ND	25.0	mg/kg							Ua
Residual Range Organics (C28-C40)	ND	100	"							Ua
Surrogate: o-Terphenyl	23		"	24.9		92.1	50-150			

Origins Laboratory, Inc.



The results in this report apply to the samples analyzed in accordance with the chain of custody document. This analytical report must be reproduced in its entirety.

Fremont Environmental
8305 6th St, PO Box 1289
Wellington CO 80549

Paul Henehan
Project Number: [none]
Project: PDC - Gus LD Pad

Extractable Petroleum Hydrocarbons by 8015D - Quality Control Origins Laboratory, Inc.

Analyte	Result	Reporting Limit	Units	Spike Level	Source Result	%REC	%REC Limits	RPD	RPD Limit	Notes
---------	--------	-----------------	-------	-------------	---------------	------	-------------	-----	-----------	-------

Batch B4F0347 - EPA 3550B

LCS (B4F0347-BS1)

Prepared: 06/03/2024 Analyzed: 06/04/2024

Diesel (C10-C28)	919	50.0	mg/kg	1000		91.9	70-130			
Residual Range Organics (C28-C40)	1060	200	"	1000		106	70-130			
Surrogate: o-Terphenyl	58		"	49.8		117	50-150			

Origins Laboratory, Inc.



The results in this report apply to the samples analyzed in accordance with the chain of custody document. This analytical report must be reproduced in its entirety.

Fremont Environmental
8305 6th St, PO Box 1289
Wellington CO 80549

Paul Henehan
Project Number: [none]
Project: PDC - Gus LD Pad

Extractable Petroleum Hydrocarbons by 8015D - Quality Control Origins Laboratory, Inc.

Analyte	Result	Reporting Limit	Units	Spike Level	Source Result	%REC	%REC Limits	RPD	RPD Limit	Notes
---------	--------	-----------------	-------	-------------	---------------	------	-------------	-----	-----------	-------

Batch B4F0347 - EPA 3550B

Matrix Spike (B4F0347-MS1)		Source: Y406038-01			Prepared: 06/03/2024 Analyzed: 06/04/2024					
Diesel (C10-C28)	907	50.0	mg/kg	1000	ND	90.7	70-130			
Residual Range Organics (C28-C40)	1060	200	"	1000	ND	106	70-130			
Surrogate: o-Terphenyl	47		"	49.8		95.4	50-150			

Origins Laboratory, Inc.



The results in this report apply to the samples analyzed in accordance with the chain of custody document. This analytical report must be reproduced in its entirety.

Fremont Environmental
8305 6th St, PO Box 1289
Wellington CO 80549

Paul Henehan
Project Number: [none]
Project: PDC - Gus LD Pad

Extractable Petroleum Hydrocarbons by 8015D - Quality Control Origins Laboratory, Inc.

Analyte	Result	Reporting Limit	Units	Spike Level	Source Result	%REC	%REC Limits	RPD	RPD Limit	Notes
Batch B4F0347 - EPA 3550B										
Matrix Spike Dup (B4F0347-MSD1)			Source: Y406038-01			Prepared: 06/03/2024 Analyzed: 06/04/2024				
Diesel (C10-C28)	897	50.0	mg/kg	1000	ND	89.7	70-130	1.03	35	
Residual Range Organics (C28-C40)	1050	200	"	1000	ND	105	70-130	1.22	35	
Surrogate: o-Terphenyl	47		"	49.8		94.4	50-150			

Origins Laboratory, Inc.



The results in this report apply to the samples analyzed in accordance with the chain of custody document. This analytical report must be reproduced in its entirety.

Fremont Environmental
8305 6th St, PO Box 1289
Wellington CO 80549

Paul Henehan
Project Number: [none]
Project: PDC - Gus LD Pad

Extractable Petroleum Hydrocarbons by 8015D - Quality Control

Origins Laboratory, Inc.

Analyte	Result	Reporting Limit	Units	Spike Level	Source Result	%REC	%REC Limits	RPD	RPD Limit	Notes
---------	--------	-----------------	-------	-------------	---------------	------	-------------	-----	-----------	-------

Metals by EPA 6000/7000 Series Methods - Quality Control

Origins Laboratory, Inc.

Analyte	Result	Reporting Limit	Units	Spike Level	Source Result	%REC	%REC Limits	RPD	RPD Limit	Notes
---------	--------	-----------------	-------	-------------	---------------	------	-------------	-----	-----------	-------

Batch B4F0346 - EPA 3050B

Blank (B4F0346-BLK1)

Prepared: 06/03/2024 Analyzed: 06/04/2024

Arsenic	ND	0.290	mg/kg
Barium	ND	10.0	"
Cadmium	ND	0.100	"
Copper	ND	10.0	"
Lead	ND	1.00	"
Nickel	ND	1.00	"
Selenium	ND	0.260	"
Silver	ND	0.100	"
Zinc	ND	37.0	"

LCS (B4F0346-BS1)

Prepared: 06/03/2024 Analyzed: 06/04/2024

Arsenic	5.07	0.290	mg/kg	5.00	101	80-120
Barium	468	10.0	"	500	93.6	80-120
Cadmium	4.94	0.100	"	5.00	98.8	80-120
Copper	49.6	10.0	"	50.0	99.2	80-120
Lead	4.81	1.00	"	5.00	96.1	80-120
Nickel	4.46	1.00	"	5.00	89.3	80-120
Selenium	9.51	0.260	"	9.50	100	80-120
Silver	4.78	0.100	"	5.00	95.5	80-120
Zinc	45.5	37.0	"	50.0	91.0	80-120

Matrix Spike (B4F0346-MS1)

Source: Y406039-01

Prepared: 06/03/2024 Analyzed: 06/04/2024

Origins Laboratory, Inc.



The results in this report apply to the samples analyzed in accordance with the chain of custody document. This analytical report must be reproduced in its entirety.

Fremont Environmental
8305 6th St, PO Box 1289
Wellington CO 80549

Paul Henehan
Project Number: [none]
Project: PDC - Gus LD Pad

Metals by EPA 6000/7000 Series Methods - Quality Control Origins Laboratory, Inc.

Analyte	Result	Reporting Limit	Units	Spike Level	Source Result	%REC	%REC Limits	RPD	RPD Limit	Notes
---------	--------	-----------------	-------	-------------	---------------	------	-------------	-----	-----------	-------

Batch B4F0346 - EPA 3050B

Matrix Spike (B4F0346-MS1)		Source: Y406039-01			Prepared: 06/03/2024 Analyzed: 06/04/2024					
Arsenic	6.48	0.247	mg/kg	4.26	2.13	102	75-125			
Barium	494	8.52	"	426	56.1	103	75-125			
Cadmium	4.52	0.0852	"	4.26	0.0786	104	75-125			
Copper	49.2	8.52	"	42.6	5.94	101	75-125			
Lead	8.87	0.852	"	4.26	4.68	98.5	75-125			
Nickel	11.0	0.852	"	4.26	7.23	87.7	75-125			
Selenium	8.41	0.221	"	8.09	0.138	102	75-125			
Silver	4.22	0.0852	"	4.26	0.0102	98.7	75-125			
Zinc	65.8	31.5	"	42.6	27.2	90.5	75-125			

Matrix Spike Dup (B4F0346-MSD1)		Source: Y406039-01			Prepared: 06/03/2024 Analyzed: 06/04/2024					
Arsenic	6.84	0.258	mg/kg	4.45	2.13	106	75-125	5.50	20	
Barium	518	8.91	"	445	56.1	104	75-125	4.74	20	
Cadmium	4.65	0.0891	"	4.45	0.0786	103	75-125	2.73	20	
Copper	51.1	8.91	"	44.5	5.94	101	75-125	3.85	20	
Lead	9.33	0.891	"	4.45	4.68	105	75-125	5.08	20	
Nickel	12.0	0.891	"	4.45	7.23	106	75-125	8.78	20	
Selenium	8.62	0.232	"	8.46	0.138	100	75-125	2.53	20	
Silver	4.39	0.0891	"	4.45	0.0102	98.4	75-125	4.11	20	
Zinc	69.9	33.0	"	44.5	27.2	95.8	75-125	6.06	20	

Batch B4F0350 - EPA 3050B

Blank (B4F0350-BLK1)		Prepared: 06/03/2024 Analyzed: 06/04/2024								
Arsenic	ND	0.290	mg/kg							
Barium	ND	10.0	"							
Cadmium	ND	0.100	"							

Origins Laboratory, Inc.



The results in this report apply to the samples analyzed in accordance with the chain of custody document. This analytical report must be reproduced in its entirety.

Fremont Environmental
8305 6th St, PO Box 1289
Wellington CO 80549

Paul Henehan
Project Number: [none]
Project: PDC - Gus LD Pad

Metals by EPA 6000/7000 Series Methods - Quality Control

Origins Laboratory, Inc.

Analyte	Result	Reporting Limit	Units	Spike Level	Source Result	%REC	%REC Limits	RPD	RPD Limit	Notes
---------	--------	-----------------	-------	-------------	---------------	------	-------------	-----	-----------	-------

Batch B4F0350 - EPA 3050B

Blank (B4F0350-BLK1)

Prepared: 06/03/2024 Analyzed: 06/04/2024

Copper	ND	10.0	mg/kg
Lead	ND	1.00	"
Nickel	ND	1.00	"
Selenium	ND	0.260	"
Silver	ND	0.100	"
Zinc	ND	37.0	"

LCS (B4F0350-BS1)

Prepared: 06/03/2024 Analyzed: 06/04/2024

Arsenic	5.48	0.290	mg/kg	5.00	110	80-120
Barium	526	10.0	"	500	105	80-120
Cadmium	5.33	0.100	"	5.00	107	80-120
Copper	53.0	10.0	"	50.0	106	80-120
Lead	5.17	1.00	"	5.00	103	80-120
Nickel	5.04	1.00	"	5.00	101	80-120
Selenium	9.99	0.260	"	9.50	105	80-120
Silver	5.58	0.100	"	5.00	112	80-120
Zinc	50.9	37.0	"	50.0	102	80-120

Matrix Spike (B4F0350-MS1)

Source: Y406043-05

Prepared: 06/03/2024 Analyzed: 06/04/2024

Arsenic	8.36	0.259	mg/kg	4.47	3.92	99.3	75-125
Barium	610	8.94	"	447	145	104	75-125
Cadmium	4.76	0.0894	"	4.47	0.144	103	75-125
Copper	61.6	8.94	"	44.7	16.6	101	75-125
Lead	15.7	0.894	"	4.47	11.6	91.8	75-125
Nickel	23.0	0.894	"	4.47	19.1	89.2	75-125
Selenium	8.55	0.232	"	8.49	0.177	98.6	75-125
Silver	4.65	0.0894	"	4.47	0.0450	103	75-125

Origins Laboratory, Inc.



The results in this report apply to the samples analyzed in accordance with the chain of custody document. This analytical report must be reproduced in its entirety.

Fremont Environmental
8305 6th St, PO Box 1289
Wellington CO 80549

Paul Henehan
Project Number: [none]
Project: PDC - Gus LD Pad

Metals by EPA 6000/7000 Series Methods - Quality Control
Origins Laboratory, Inc.

Analyte	Result	Reporting Limit	Units	Spike Level	Source Result	%REC	%REC Limits	RPD	RPD Limit	Notes
Batch B4F0350 - EPA 3050B										
Matrix Spike (B4F0350-MS1)		Source: Y406043-05			Prepared: 06/03/2024 Analyzed: 06/04/2024					
Zinc	95.3	33.1	mg/kg	44.7	63.2	71.8	75-125			QM-07
Matrix Spike Dup (B4F0350-MSD1)		Source: Y406043-05			Prepared: 06/03/2024 Analyzed: 06/04/2024					
Arsenic	8.23	0.253	mg/kg	4.36	3.92	98.9	75-125	1.50	20	
Barium	575	8.72	"	436	145	98.6	75-125	5.95	20	
Cadmium	4.70	0.0872	"	4.36	0.144	105	75-125	1.20	20	
Copper	60.4	8.72	"	43.6	16.6	100	75-125	1.92	20	
Lead	15.0	0.872	"	4.36	11.6	78.5	75-125	4.44	20	
Nickel	22.6	0.872	"	4.36	19.1	81.0	75-125	1.99	20	
Selenium	8.04	0.227	"	8.28	0.177	94.9	75-125	6.13	20	
Silver	4.56	0.0872	"	4.36	0.0450	104	75-125	1.80	20	
Zinc	91.3	32.3	"	43.6	63.2	64.4	75-125	4.32	20	QM-07

Origins Laboratory, Inc.



The results in this report apply to the samples analyzed in accordance with the chain of custody document. This analytical report must be reproduced in its entirety.

Fremont Environmental
8305 6th St, PO Box 1289
Wellington CO 80549

Paul Henehan
Project Number: [none]
Project: PDC - Gus LD Pad

EPA 8270E (SW846) - Semivolatile Organic Compounds - Quality Control
Origins Laboratory, Inc.

Analyte	Result	Reporting Limit	Units	Spike Level	Source Result	%REC	%REC Limits	RPD	RPD Limit	Notes
---------	--------	-----------------	-------	-------------	---------------	------	-------------	-----	-----------	-------

Batch B4F0345 - EPA 3580

Blank (B4F0345-BLK1)

Prepared: 06/03/2024 Analyzed: 06/04/2024

1-Methylnaphthalene	ND	0.002	mg/kg							Ua
2-Methylnaphthalene	ND	0.002	"							Ua
Acenaphthene	ND	0.020	"							Ua
Anthracene	ND	0.020	"							Ua
Benzo (a) anthracene	ND	0.005	"							Ua
Benzo (a) pyrene	ND	0.020	"							Ua
Benzo (b) fluoranthene	ND	0.020	"							Ua
Benzo (g,h,i) perylene	ND	0.020	"							Ua
Benzo (k) fluoranthene	ND	0.020	"							Ua
Chrysene	ND	0.020	"							Ua
Dibenz (a,h) anthracene	ND	0.020	"							Ua
Fluoranthene	ND	0.020	"							Ua
Fluorene	ND	0.020	"							Ua
Indeno (1,2,3-cd) pyrene	ND	0.020	"							Ua
Naphthalene	ND	0.002	"							Ua
Phenanthrene	ND	0.020	"							Ua
Pyrene	ND	0.020	"							Ua

Surrogate: Fluorene-d10	210		ug/kg	200		103	60-130
Surrogate: Anthracene-d10	190		"	200		95.6	60-130
Surrogate: Pyrene-d10	200		"	200		99.5	60-130
Surrogate: Benzo (a) pyrene-d12	200		"	200		102	60-130

LCS (B4F0345-BS1)

Prepared: 06/03/2024 Analyzed: 06/04/2024

1-Methylnaphthalene	0.193	0.002	mg/kg	0.200		96.4	70-130
2-Methylnaphthalene	0.191	0.002	"	0.200		95.6	70-130
Acenaphthene	0.203	0.020	"	0.200		102	70-130
Anthracene	0.201	0.020	"	0.200		101	70-130

Origins Laboratory, Inc.



The results in this report apply to the samples analyzed in accordance with the chain of custody document. This analytical report must be reproduced in its entirety.

Fremont Environmental
8305 6th St, PO Box 1289
Wellington CO 80549

Paul Henehan
Project Number: [none]
Project: PDC - Gus LD Pad

EPA 8270E (SW846) - Semivolatile Organic Compounds - Quality Control
Origins Laboratory, Inc.

Analyte	Result	Reporting Limit	Units	Spike Level	Source Result	%REC	%REC Limits	RPD	RPD Limit	Notes
---------	--------	-----------------	-------	-------------	---------------	------	-------------	-----	-----------	-------

Batch B4F0345 - EPA 3580

LCS (B4F0345-BS1)

Prepared: 06/03/2024 Analyzed: 06/04/2024

Benzo (a) anthracene	0.221	0.005	mg/kg	0.200		111	70-130
Benzo (a) pyrene	0.203	0.020	"	0.200		101	70-130
Benzo (b) fluoranthene	0.192	0.020	"	0.200		96.0	70-130
Benzo (g,h,i) perylene	0.192	0.020	"	0.200		96.2	70-130
Benzo (k) fluoranthene	0.159	0.020	"	0.200		79.4	70-130
Chrysene	0.207	0.020	"	0.200		103	70-130
Dibenz (a,h) anthracene	0.207	0.020	"	0.200		104	70-130
Fluoranthene	0.204	0.020	"	0.200		102	70-130
Fluorene	0.198	0.020	"	0.200		98.9	70-130
Indeno (1,2,3-cd) pyrene	0.208	0.020	"	0.200		104	70-130
Naphthalene	0.192	0.002	"	0.200		96.1	70-130
Phenanthrene	0.192	0.020	"	0.200		96.0	70-130
Pyrene	0.212	0.020	"	0.200		106	70-130
Surrogate: Fluorene-d10	200		ug/kg	200		101	60-130
Surrogate: Anthracene-d10	200		"	200		97.9	60-130
Surrogate: Pyrene-d10	210		"	200		104	60-130
Surrogate: Benzo (a) pyrene-d12	200		"	200		102	60-130

Matrix Spike (B4F0345-MS1)

Source: Y406038-01

Prepared: 06/03/2024 Analyzed: 06/04/2024

1-Methylnaphthalene	0.190	0.002	mg/kg	0.200	ND	94.8	70-130
2-Methylnaphthalene	0.192	0.002	"	0.200	ND	95.8	70-130
Acenaphthene	0.199	0.020	"	0.200	ND	99.5	70-130
Anthracene	0.192	0.020	"	0.200	ND	95.8	70-130
Benzo (a) anthracene	0.212	0.005	"	0.200	ND	106	70-130
Benzo (a) pyrene	0.196	0.020	"	0.200	ND	98.0	70-130
Benzo (b) fluoranthene	0.178	0.020	"	0.200	ND	88.8	70-130
Benzo (g,h,i) perylene	0.188	0.020	"	0.200	ND	94.2	70-130

Origins Laboratory, Inc.



The results in this report apply to the samples analyzed in accordance with the chain of custody document. This analytical report must be reproduced in its entirety.

Fremont Environmental
8305 6th St, PO Box 1289
Wellington CO 80549

Paul Henehan
Project Number: [none]
Project: PDC - Gus LD Pad

EPA 8270E (SW846) - Semivolatile Organic Compounds - Quality Control
Origins Laboratory, Inc.

Analyte	Result	Reporting Limit	Units	Spike Level	Source Result	%REC	%REC Limits	RPD	RPD Limit	Notes
---------	--------	-----------------	-------	-------------	---------------	------	-------------	-----	-----------	-------

Batch B4F0345 - EPA 3580

Matrix Spike (B4F0345-MS1)		Source: Y406038-01			Prepared: 06/03/2024 Analyzed: 06/04/2024					
Benzo (k) fluoranthene	0.161	0.020	mg/kg	0.200	0.0005	80.1	70-130			
Chrysene	0.202	0.020	"	0.200	ND	101	70-130			
Dibenz (a,h) anthracene	0.197	0.020	"	0.200	ND	98.7	70-130			
Fluoranthene	0.199	0.020	"	0.200	ND	99.4	70-130			
Fluorene	0.202	0.020	"	0.200	0.0004	101	70-130			
Indeno (1,2,3-cd) pyrene	0.195	0.020	"	0.200	ND	97.3	70-130			
Naphthalene	0.189	0.002	"	0.200	ND	94.5	70-130			
Phenanthrene	0.184	0.020	"	0.200	ND	92.1	70-130			
Pyrene	0.219	0.020	"	0.200	ND	109	70-130			
Surrogate: Fluorene-d10	210		ug/kg	200		104	60-130			
Surrogate: Anthracene-d10	190		"	200		96.2	60-130			
Surrogate: Pyrene-d10	220		"	200		108	60-130			
Surrogate: Benzo (a) pyrene-d12	200		"	200		100	60-130			

Matrix Spike Dup (B4F0345-MSD1)		Source: Y406038-01			Prepared: 06/03/2024 Analyzed: 06/04/2024					
1-Methylnaphthalene	0.197	0.002	mg/kg	0.200	ND	98.3	70-130	3.68	20	
2-Methylnaphthalene	0.201	0.002	"	0.200	ND	101	70-130	5.02	20	
Acenaphthene	0.201	0.020	"	0.200	ND	101	70-130	1.21	20	
Anthracene	0.201	0.020	"	0.200	ND	100	70-130	4.59	20	
Benzo (a) anthracene	0.221	0.005	"	0.200	ND	110	70-130	4.15	20	
Benzo (a) pyrene	0.205	0.020	"	0.200	ND	103	70-130	4.63	20	
Benzo (b) fluoranthene	0.201	0.020	"	0.200	ND	100	70-130	12.2	20	
Benzo (g,h,i) perylene	0.203	0.020	"	0.200	ND	102	70-130	7.58	20	
Benzo (k) fluoranthene	0.172	0.020	"	0.200	0.0005	85.6	70-130	6.58	20	
Chrysene	0.215	0.020	"	0.200	ND	107	70-130	6.08	20	
Dibenz (a,h) anthracene	0.205	0.020	"	0.200	ND	103	70-130	3.94	20	
Fluoranthene	0.234	0.020	"	0.200	ND	117	70-130	16.4	20	

Origins Laboratory, Inc.



The results in this report apply to the samples analyzed in accordance with the chain of custody document. This analytical report must be reproduced in its entirety.

Fremont Environmental
8305 6th St, PO Box 1289
Wellington CO 80549

Paul Henehan
Project Number: [none]
Project: PDC - Gus LD Pad

EPA 8270E (SW846) - Semivolatile Organic Compounds - Quality Control
Origins Laboratory, Inc.

Analyte	Result	Reporting Limit	Units	Spike Level	Source Result	%REC	%REC Limits	RPD	RPD Limit	Notes
---------	--------	-----------------	-------	-------------	---------------	------	-------------	-----	-----------	-------

Batch B4F0345 - EPA 3580

Matrix Spike Dup (B4F0345-MSD1)		Source: Y406038-01			Prepared: 06/03/2024 Analyzed: 06/04/2024					
Fluorene	0.197	0.020	mg/kg	0.200	0.0004	98.1	70-130	2.56	20	
Indeno (1,2,3-cd) pyrene	0.207	0.020	"	0.200	ND	104	70-130	6.43	20	
Naphthalene	0.200	0.002	"	0.200	ND	100	70-130	5.84	20	
Phenanthrene	0.202	0.020	"	0.200	ND	101	70-130	9.11	20	
Pyrene	0.231	0.020	"	0.200	ND	116	70-130	5.52	20	
Surrogate: Fluorene-d10	200		ug/kg	200		99.4	60-130			
Surrogate: Anthracene-d10	200		"	200		99.1	60-130			
Surrogate: Pyrene-d10	220		"	200		111	60-130			
Surrogate: Benzo (a) pyrene-d12	200		"	200		98.8	60-130			

Origins Laboratory, Inc.



The results in this report apply to the samples analyzed in accordance with the chain of custody document. This analytical report must be reproduced in its entirety.

Fremont Environmental
8305 6th St, PO Box 1289
Wellington CO 80549

Paul Henehan
Project Number: [none]
Project: PDC - Gus LD Pad

Classical Chemistry Parameters - Quality Control Origins Laboratory, Inc.

Analyte	Result	Reporting Limit	Units	Spike Level	Source Result	%REC	%REC Limits	RPD	RPD Limit	Notes
---------	--------	-----------------	-------	-------------	---------------	------	-------------	-----	-----------	-------

Batch B4F0411 - DTPA Sorbitol Preparation

Blank (B4F0411-BLK1)

Prepared: 06/04/2024 Analyzed: 06/05/2024

Boron ND 0.100 mg/L

Duplicate (B4F0411-DUP1)

Source: Y406039-01

Prepared: 06/04/2024 Analyzed: 06/05/2024

Boron 0.139 0.0988 mg/L 0.139 0.120 50

Batch B4F0412 - DTPA Sorbitol Preparation

Blank (B4F0412-BLK1)

Prepared: 06/04/2024 Analyzed: 06/05/2024

Boron ND 0.100 mg/L

Duplicate (B4F0412-DUP1)

Source: Y406041-09

Prepared: 06/04/2024 Analyzed: 06/05/2024

Boron 0.445 0.0998 mg/L 0.413 7.46 50

Batch B4F0418 - Saturated Paste Metals

Blank (B4F0418-BLK1)

Prepared: 06/04/2024 Analyzed: 06/05/2024

SAR ND 0.0100 SAR

Calcium PPM ND 10.0 mg/L

Magnesium PPM ND 10.0 "

Sodium PPM ND 10.0 "

Duplicate (B4F0418-DUP1)

Source: Y406040-01

Prepared: 06/04/2024 Analyzed: 06/05/2024

Calcium PPM 35.2 10.0 mg/L 39.2 10.8 50

SAR ND 0.0100 SAR 0.964 200

Magnesium PPM 13.8 10.0 mg/L 15.2 9.45 50

Sodium PPM 26.7 10.0 28.0 4.93 50

Origins Laboratory, Inc.



The results in this report apply to the samples analyzed in accordance with the chain of custody document. This analytical report must be reproduced in its entirety.

Fremont Environmental
8305 6th St, PO Box 1289
Wellington CO 80549

Paul Henehan
Project Number: [none]
Project: PDC - Gus LD Pad

Classical Chemistry Parameters - Quality Control Origins Laboratory, Inc.

Analyte	Result	Reporting Limit	Units	Spike Level	Source Result	%REC	%REC Limits	RPD	RPD Limit	Notes
Batch B4F0419 - Saturated Paste Metals										
Blank (B4F0419-BLK1)					Prepared: 06/04/2024 Analyzed: 06/05/2024					
Calcium PPM	ND	10.0	mg/L							
SAR	ND	0.0100	SAR							
Magnesium PPM	ND	10.0	mg/L							
Sodium PPM	ND	10.0	"							
Duplicate (B4F0419-DUP1)					Source: Y406041-11		Prepared: 06/04/2024 Analyzed: 06/05/2024			
Calcium PPM	69.4	10.0	mg/L		49.5			33.4	50	
SAR	ND	0.0100	SAR		14.6				200	
Magnesium PPM	20.4	10.0	mg/L		14.9			31.4	50	
Sodium PPM	507	10.0	"		456			10.5	50	

Origins Laboratory, Inc.



The results in this report apply to the samples analyzed in accordance with the chain of custody document. This analytical report must be reproduced in its entirety.

Fremont Environmental
8305 6th St, PO Box 1289
Wellington CO 80549

Paul Henehan
Project Number: [none]
Project: PDC - Gus LD Pad

Saturated Paste - Quality Control Origins Laboratory, Inc.

Analyte	Result	Reporting Limit	Units	Spike Level	Source Result	%REC	%REC Limits	RPD	RPD Limit	Notes
---------	--------	-----------------	-------	-------------	---------------	------	-------------	-----	-----------	-------

Batch B4F0424 - Saturated Paste pH/EC

Blank (B4F0424-BLK1)

Prepared: 06/04/2024 Analyzed: 06/05/2024

Specific Conductance (EC) ND 0.00500 mmhos/cm

Duplicate (B4F0424-DUP1)

Source: Y406040-01

Prepared: 06/04/2024 Analyzed: 06/05/2024

Specific Conductance (EC)	0.429	0.00500	mmhos/cm	0.464	7.66	25
pH	8.44		pH Units	8.53	1.06	25

Batch B4F0425 - Saturated Paste pH/EC

Blank (B4F0425-BLK1)

Prepared: 06/04/2024 Analyzed: 06/05/2024

Specific Conductance (EC) ND 0.00500 mmhos/cm

Duplicate (B4F0425-DUP1)

Source: Y406041-11

Prepared: 06/04/2024 Analyzed: 06/05/2024

Specific Conductance (EC)	2.59	0.00500	mmhos/cm	2.30	12.0	25
pH	8.08		pH Units	8.26	2.20	25

Origins Laboratory, Inc.



The results in this report apply to the samples analyzed in accordance with the chain of custody document. This analytical report must be reproduced in its entirety.

Fremont Environmental
8305 6th St, PO Box 1289
Wellington CO 80549

Paul Henehan
Project Number: [none]
Project: PDC - Gus LD Pad

Total Metals by 7196A - Quality Control GEL Laboratories, LLC

Analyte	Result	Reporting Limit	Units	Spike Level	Source Result	%REC	%REC Limits	RPD	RPD Limit	Notes
Batch 2631125 - SW846 3060A										
BLANK (1205770933-BLK)					Prepared: 06/24/2024 Analyzed: 06/25/2024					
Hexavalent Chromium	ND	0.305	mg/kg				-			U
LCS (1205770934-BKS)					Prepared: 06/24/2024 Analyzed: 06/25/2024					
Hexavalent Chromium	3.32	0.332	mg/kg	3.32		99.9	80-120			
DUP (1205770935 D)					Source: Y406041-05 Prepared: 06/24/2024 Analyzed: 06/25/2024					
Hexavalent Chromium	0.529	0.362	mg/kg dry		0.568		0-50	7.09	50	
MS (1205770936 S)					Source: Y406041-05 Prepared: 06/24/2024 Analyzed: 06/25/2024					
Hexavalent Chromium	1.61	0.362	mg/kg dry	3.62	0.568	28.8	75-125			
DUP (1205770937 D)					Source: 671524006 Prepared: 06/24/2024 Analyzed: 06/25/2024					
Hexavalent Chromium	ND	0.348	mg/kg dry		<0.139		0-50	N/A	50	U
MS (1205770938 S)					Source: 671524006 Prepared: 06/24/2024 Analyzed: 06/25/2024					
Hexavalent Chromium	1.70	0.348	mg/kg dry	3.48	<0.139	46.5	75-125			
ILCS (1205770939-ILCS)					Prepared: 06/24/2024 Analyzed: 06/25/2024					
Hexavalent Chromium	5.70	0.281	mg/kg	5.77		98.7	80-120			

Origins Laboratory, Inc.



The results in this report apply to the samples analyzed in accordance with the chain of custody document. This analytical report must be reproduced in its entirety.

Fremont Environmental
8305 6th St, PO Box 1289
Wellington CO 80549

Paul Henehan
Project Number: [none]
Project: PDC - Gus LD Pad

Total Metals 7196A - Quality Control GEL Laboratories, LLC

Analyte	Result	Reporting Limit	Units	Spike Level	Source Result	%REC	%REC Limits	RPD	RPD Limit	Notes
Batch 2623271 - SW846 3060A										
BLANK (1205755137-BLK)					Prepared: 06/07/2024 Analyzed: 06/11/2024					
Hexavalent Chromium	ND	0.343	mg/kg				-			U
LCS (1205755138-BKS)					Prepared: 06/07/2024 Analyzed: 06/11/2024					
Hexavalent Chromium	3.08	0.317	mg/kg	3.17		97.1	80-120			
DUP (1205755139 D)					Source: Y406041-01 Prepared: 06/07/2024 Analyzed: 06/11/2024					
Hexavalent Chromium	0.188	0.277	mg/kg dry		0.218		0-50	14.9	50	J
MS (1205755140 S)					Source: Y406041-01 Prepared: 06/07/2024 Analyzed: 06/11/2024					
Hexavalent Chromium	2.66	0.277	mg/kg dry	2.77	0.218	88.1	75-125			
DUP (1205755141 D)					Source: 670151005 Prepared: 06/07/2024 Analyzed: 06/11/2024					
Hexavalent Chromium	ND	0.336	mg/kg dry		<0.134		0-50	N/A	50	U
MS (1205755142 S)					Source: 670151005 Prepared: 06/07/2024 Analyzed: 06/11/2024					
Hexavalent Chromium	3.22	0.336	mg/kg dry	3.36	<0.134	93.6	75-125			
ILCS (1205755143-ILCS)					Prepared: 06/07/2024 Analyzed: 06/11/2024					
Hexavalent Chromium	5.61	0.277	mg/kg	5.60		100	80-120			

Origins Laboratory, Inc.



The results in this report apply to the samples analyzed in accordance with the chain of custody document. This analytical report must be reproduced in its entirety.

Fremont Environmental
8305 6th St, PO Box 1289
Wellington CO 80549

Paul Henehan
Project Number: [none]
Project: PDC - Gus LD Pad

Notes and Definitions

Ua Sample is Non-Detect.

U Result not detected above the detection limit

QM-07 The spike recovery was outside acceptance limits for the MS and/or MSD. The batch was accepted based on acceptable LCS recovery.

J Greater than the detection limit but less than the reporting limit

ND Analyte NOT DETECTED at or above the reporting limit

RPD Relative Percent Difference

All soil results are reported on a wet weight basis.

Calculated results may use J-flag data (instead of reported "ND") as part of calculation to provide a more accurate result.

Origins Laboratory, Inc.



The results in this report apply to the samples analyzed in accordance with the chain of custody document. This analytical report must be reproduced in its entirety.

Summit Scientific

4653 Table Mountain Drive, Golden, Colorado 80403

303.277.9310

June 11, 2024

Paul Henchan
Fremont Environmental
PO Box 1289
Wellington, CO 80549
RE: PDC - Gus LD Pad
Work Order #2405472

Enclosed are the results of analyses for samples received by Summit Scientific on 05/30/24 17:00. If you have any questions concerning this report, please feel free to contact me.

Sincerely,

A handwritten signature in black ink, appearing to read "Natalie Tessier". The signature is fluid and cursive, with the first name being more prominent.

Natalie Tessier For Paul Shrewsbury
President



Fremont Environmental
PO Box 1289
Wellington CO, 80549

Project: PDC - Gus LD Pad

Project Number: [none]
Project Manager: Paul Henchan

Reported:
06/11/24 12:56

ANALYTICAL REPORT FOR SAMPLES

Sample ID	Laboratory ID	Matrix	Date Sampled	Date Received
PW	2405472-01	Water	05/30/24 00:00	05/30/24 17:00

Summit Scientific

The results in this report apply to the samples analyzed in accordance with the chain of custody document. This analytical report must be reproduced in its entirety.

Summit Scientific

S₂

4653 Table Mountain Drive ♦ Golden, Colorado 80403
303-277-9310

2405 472
AS

Page 1 of 1

Client: Fremont Environmental Inc.

Project Manager: Paul Henehan

Address:

E-Mail: PDC

City/State/Zip:

Phone:

Project Name: PDC - GUS LD PAD

Sampler Name: HENEHAN

Project Number:

ID	Sample Description	Date Sampled	Time Sampled	# of containers	Preservative				Matrix				Analysis Requested										Special Instructions	
					HCl	HNO ₃	None	Other	Water	Soil	Air-Canister #	Other	GBTEXN-TMBs	DRO,RRO	PAHs	pH, EC, SAR	Boron	915-1 metals	Arsenic	BTEXN + TMBs	TDS, Cl, Su			
1	PW	5/30/24		2			✓		✓															✓
2																								
3																								
4																								
5																								
6																								
7																								
8																								
9																								
10																								

Relinquished by: <u>YAA/ra</u>	Date/Time: <u>5/30/24 1700</u>	Received by: <u>[Signature]</u>	Date/Time: <u>5/30/24 1700</u>	Turn Around Time (Check) Same Day <input type="checkbox"/> 72 hours <input type="checkbox"/> 24 hours <input type="checkbox"/> Standard <input checked="" type="checkbox"/> 48 hours <input type="checkbox"/> Sample Integrity: Temperature Upon Receipt: <u>10.0</u> Samples Intact: <input checked="" type="checkbox"/> Yes <input type="checkbox"/> No	Notes:
Relinquished by:	Date/Time:	Received by:	Date/Time:		
Relinquished by:	Date/Time:	Received by:	Date/Time:		

S₂

Sample Receipt Checklist

S2 Work Order# 2405472Client: Framont Client Project ID: POC-Gus LP PadShipped Via: H.D./P.U./FedEx/UPS/USPS/Other ☐ Airbill #: ☐

<input type="checkbox"/>	<input type="checkbox"/>	<input type="checkbox"/>	<input type="checkbox"/>	<input type="checkbox"/>
--------------------------	--------------------------	--------------------------	--------------------------	--------------------------

Matrix (Check all that apply) Air ☐ Soil/Solid ☐ Water ☒ Other ☐Temp (°C) 10.0 Thermometer # 1

	Yes	No	N/A	Comments (if any)
If samples require cooling, is the temperature < 6°C? ⁽¹⁾ NOTE: If samples are delivered the same day of sampling, this requirement is met if there is evidence that cooling has begun.	<input checked="" type="checkbox"/>	<input type="checkbox"/>	<input type="checkbox"/>	CW20E
If custody seals are present, are they intact? ⁽¹⁾	<input checked="" type="checkbox"/>	<input type="checkbox"/>	<input type="checkbox"/>	
Are samples due within 48 hours present?	<input type="checkbox"/>	<input checked="" type="checkbox"/>	<input type="checkbox"/>	
Are water samples with short hold times present? Note the short hold analysis in the comments column - pH, Nitrate/Nitrite, Ferrous Iron (Fe ²⁺), Hexavalent Chromium (Cr ⁶⁺ , Cr VI), COD/BOD, Total Coliform, E. Coli, Total Residual Chlorine (TRC), Dissolved Oxygen	<input type="checkbox"/>	<input checked="" type="checkbox"/>	<input type="checkbox"/>	
Is a chain-of-custody (COC) form present and filled out Completely? ⁽¹⁾	<input checked="" type="checkbox"/>	<input checked="" type="checkbox"/>	<input type="checkbox"/>	no sample times
Is the COC properly relinquished by the client w/ date and time recorded? ⁽¹⁾	<input checked="" type="checkbox"/>	<input type="checkbox"/>	<input type="checkbox"/>	
Were all samples received intact? ⁽¹⁾	<input checked="" type="checkbox"/>	<input type="checkbox"/>	<input type="checkbox"/>	
Was adequate sample volume provided? ⁽¹⁾	<input checked="" type="checkbox"/>	<input type="checkbox"/>	<input type="checkbox"/>	
Does the COC agree with the number and type of sample bottles received? ⁽¹⁾	<input checked="" type="checkbox"/>	<input type="checkbox"/>	<input type="checkbox"/>	
Do the sample IDs on the bottle labels match the COC? ⁽¹⁾	<input checked="" type="checkbox"/>	<input type="checkbox"/>	<input type="checkbox"/>	
For volatiles in water – is there headspace present? If yes, contact client and note in narrative.	<input type="checkbox"/>	<input type="checkbox"/>	<input checked="" type="checkbox"/>	
Are samples preserved that require preservation (excluding cooling)? ⁽¹⁾ Note the type of preservative in the comments column – HCl, H ₂ SO ₄ , NaOH, HNO ₃ , etc.	<input type="checkbox"/>	<input checked="" type="checkbox"/>	<input type="checkbox"/>	
If samples are acid preserved for metals, is the pH ≤ 2? ⁽¹⁾ Record the pH in Comments.	<input type="checkbox"/>	<input type="checkbox"/>	<input checked="" type="checkbox"/>	
If dissolved metals are requested, were samples field filtered?	<input type="checkbox"/>	<input type="checkbox"/>	<input checked="" type="checkbox"/>	

Additional Comments (if any):

⁽¹⁾ If NO, then contact the client before proceeding with analysis and note in case narrative.

AS

Custodian Printed Name

5/30/24

Date/Time



Fremont Environmental
PO Box 1289
Wellington CO, 80549

Project: PDC - Gus LD Pad
Project Number: [none]
Project Manager: Paul Henehan

Reported:
06/11/24 12:56

PW
2405472-01 (Water)

Summit Scientific

Total Recoverable Metals by EPA Method 200.8

Date Sampled: **05/30/24 00:00**

Analyte	Result	Reporting		Units	Dilution	Batch	Prepared	Analyzed	Method	Notes
		Limit								
Arsenic	ND	0.600		ug/l	1	BHF0019	06/03/24	06/06/24	EPA 200.8	
Barium	48900	1.00		"	"	"	"	"	"	
Cadmium	0.430	0.0500		"	"	"	"	"	"	
Copper	5.08	1.00		"	"	"	"	"	"	
Lead	0.540	0.500		"	"	"	"	"	"	
Nickel	3.60	1.00		"	"	"	"	"	"	
Selenium	ND	1.00		"	"	"	"	"	"	
Silver	0.165	0.0500		"	"	"	"	"	"	
Zinc	122	1.00		"	"	"	"	"	"	

Hexavalent Chromium by SM3500-CR B

I-02

Date Sampled: **05/30/24 00:00**

Analyte	Result	Reporting		Units	Dilution	Batch	Prepared	Analyzed	Method	Notes
		Limit								
Chromium, Hexavalent	ND	10		ug/l	1	BHE0966	05/31/24	05/31/24	SM3500-CR B	

Summit Scientific

The results in this report apply to the samples analyzed in accordance with the chain of custody document. This analytical report must be reproduced in its entirety.



Fremont Environmental
PO Box 1289
Wellington CO, 80549

Project: PDC - Gus LD Pad

Project Number: [none]
Project Manager: Paul Henchan

Reported:
06/11/24 12:56

Total Recoverable Metals by EPA Method 200.8 - Quality Control

Summit Scientific

Analyte	Result	Reporting			Spike	Source	%REC		RPD		
		Limit	Units	Level	Result	%REC	Limits	RPD	Limit	Notes	

Batch BHF0019 - EPA 200.8

Blank (BHF0019-BLK1)

Prepared: 06/03/24 Analyzed: 06/06/24

Arsenic	ND	0.600	ug/l
Barium	ND	1.00	"
Cadmium	ND	0.0500	"
Copper	ND	1.00	"
Lead	ND	0.500	"
Nickel	ND	1.00	"
Selenium	ND	1.00	"
Silver	ND	0.0500	"
Zinc	ND	1.00	"

LCS (BHF0019-BS1)

Prepared: 06/03/24 Analyzed: 06/06/24

Arsenic	547	0.600	ug/l	500	109	85-115
Barium	523	1.00	"	500	105	85-115
Cadmium	25.0	0.0500	"	25.0	99.9	85-115
Copper	530	1.00	"	500	106	85-115
Lead	252	0.500	"	250	101	85-115
Nickel	538	1.00	"	500	108	85-115
Selenium	53.4	1.00	"	50.0	107	85-115
Silver	24.9	0.0500	"	25.0	99.6	85-115
Zinc	536	1.00	"	500	107	85-115

Duplicate (BHF0019-DUP1)

Source: 2405472-01

Prepared: 06/03/24 Analyzed: 06/06/24

Arsenic	0.580	0.600	ug/l	0.440	27.5	20	QR-01
Barium	49700	1.00	"	48900	1.63	20	
Cadmium	0.495	0.0500	"	0.430	14.1	20	
Copper	5.43	1.00	"	5.08	6.76	20	
Lead	0.205	0.500	"	0.540	89.9	20	QR-01
Nickel	3.58	1.00	"	3.60	0.418	20	
Selenium	0.240	1.00	"	0.210	13.3	20	
Silver	0.145	0.0500	"	0.165	12.9	20	
Zinc	118	1.00	"	122	2.75	20	

Summit Scientific

The results in this report apply to the samples analyzed in accordance with the chain of custody document. This analytical report must be reproduced in its entirety.



Fremont Environmental
PO Box 1289
Wellington CO, 80549

Project: PDC - Gus LD Pad

Project Number: [none]
Project Manager: Paul Henchan

Reported:
06/11/24 12:56

Total Recoverable Metals by EPA Method 200.8 - Quality Control

Summit Scientific

Analyte	Reporting			Spike	Source		%REC		RPD	
	Result	Limit	Units	Level	Result	%REC	Limits	RPD	Limit	Notes

Batch BHF0019 - EPA 200.8

Matrix Spike (BHF0019-MS1)

Source: 2405472-01

Prepared: 06/03/24 Analyzed: 06/06/24

Arsenic	653	0.600	ug/l	500	0.440	131	70-130			QM-07
Barium	50600	1.00	"	500	48900	346	70-130			QM-07
Cadmium	21.4	0.0500	"	25.0	0.430	83.9	70-130			
Copper	534	1.00	"	500	5.08	106	70-130			
Lead	256	0.500	"	250	0.540	102	70-130			
Nickel	553	1.00	"	500	3.60	110	70-130			
Selenium	63.5	1.00	"	50.0	0.210	127	70-130			
Silver	21.1	0.0500	"	25.0	0.165	83.6	70-130			
Zinc	674	1.00	"	500	122	111	70-130			

Matrix Spike Dup (BHF0019-MSD1)

Source: 2405472-01

Prepared: 06/03/24 Analyzed: 06/06/24

Arsenic	663	0.600	ug/l	500	0.440	132	70-130	1.40	25	QM-07
Barium	50500	1.00	"	500	48900	322	70-130	0.232	25	QM-07
Cadmium	20.9	0.0500	"	25.0	0.430	82.1	70-130	2.15	25	
Copper	540	1.00	"	500	5.08	107	70-130	1.06	25	
Lead	253	0.500	"	250	0.540	101	70-130	1.09	25	
Nickel	558	1.00	"	500	3.60	111	70-130	0.761	25	
Selenium	65.5	1.00	"	50.0	0.210	131	70-130	3.00	25	QM-07
Silver	20.8	0.0500	"	25.0	0.165	82.4	70-130	1.36	25	
Zinc	680	1.00	"	500	122	112	70-130	0.823	25	

Summit Scientific

The results in this report apply to the samples analyzed in accordance with the chain of custody document. This analytical report must be reproduced in its entirety.



Fremont Environmental
PO Box 1289
Wellington CO, 80549

Project: PDC - Gus LD Pad

Project Number: [none]
Project Manager: Paul Henchan

Reported:
06/11/24 12:56

Hexavalent Chromium by SM3500-CR B - Quality Control
Summit Scientific

Analyte	Reporting			Spike	Source		%REC		RPD	
	Result	Limit	Units	Level	Result	%REC	Limits	RPD	Limit	Notes

Batch BHE0966 - General Preparation

Blank (BHE0966-BLK1)

Prepared & Analyzed: 05/31/24

Chromium, Hexavalent ND 10 ug/l

LCS (BHE0966-BS1)

Prepared & Analyzed: 05/31/24

Chromium, Hexavalent 110 10 ug/l 100 110 85-115

Matrix Spike (BHE0966-MS1)

Source: 2405435-01

Prepared & Analyzed: 05/31/24

Chromium, Hexavalent 109 10 ug/l 100 ND 109 85-115

Matrix Spike Dup (BHE0966-MSD1)

Source: 2405435-01

Prepared & Analyzed: 05/31/24

Chromium, Hexavalent 110 10 ug/l 100 ND 110 85-115 0.913 20

Summit Scientific

The results in this report apply to the samples analyzed in accordance with the chain of custody document. This analytical report must be reproduced in its entirety.



Fremont Environmental
PO Box 1289
Wellington CO, 80549

Project: PDC - Gus LD Pad

Project Number: [none]
Project Manager: Paul Henehan

Reported:
06/11/24 12:56

Notes and Definitions

QR-01	Analyses are not controlled on RPD values from sample concentrations less than 10 times the reporting limit. QC batch accepted based on LCS and/or LCSD QC results.
QM-07	The spike recovery was outside acceptance limits for the MS and/or MSD. The batch was accepted based on acceptable LCS/LCSD recovery.
I-02	This sample was analyzed outside of the recommended holding time.
DET	Analyte DETECTED
ND	Analyte NOT DETECTED at or above the reporting limit
NR	Not Reported
dry	Sample results reported on a dry weight basis
RPD	Relative Percent Difference