

**VERDAD RESOURCES LLC  
FEDERAL #13-35  
SECTION 35, T9N, R58W, 6th P.M.  
WELD COUNTY, COLORADO**

DATE:

DESCRIPTION:

[illegible]

| Well Name      | Lat: (NAD 83)            | Long: (NAD 83)               | Lat: (NAD 27)            | Long: (NAD 27)               | Section | Township | Range | Qtr./Qtr. | DATE COMPLETED | PDOP | OPERATOR    |
|----------------|--------------------------|------------------------------|--------------------------|------------------------------|---------|----------|-------|-----------|----------------|------|-------------|
| FEDERAL #13-35 | 40°42'07.60" (40.702111) | -103°50'16.49" (-103.837914) | 40°42'07.65" (40.702125) | -103°50'14.68" (-103.837410) | 35      | T9N      | R58W  | SW/SW     | 4/5/2024       | 2.5  | GREG WEIMER |





PHOTO: VIEW OF AS-DRILLED LOCATION

CAMERA ANGLE: NORTHERLY



PHOTO: VIEW OF AS-DRILLED LOCATION

CAMERA ANGLE: EASTERLY

## VERDAD RESOURCES LLC

FEDERAL #13-35  
SW 1/4 SW 1/4, SECTION 35, T9N, R58W, 6th P.M.  
WELD COUNTY, COLORADO



UELS, LLC  
Corporate Office \* 85 South 200 East  
Vernal, UT 84078 \* (435) 789-1017

|                 |            |         |  |
|-----------------|------------|---------|--|
| SURVEYED BY     | G.W., J.C. | 4/5/24  |  |
| DRAWN BY        | O.S.J.     | 4/8/24  |  |
| LOCATION PHOTOS |            | PHOTO 1 |  |





**PHOTO: VIEW OF AS-DRILLED LOCATION**

**CAMERA ANGLE: SOUTHERLY**



**PHOTO: VIEW OF AS-DRILLED LOCATION**

**CAMERA ANGLE: WESTERLY**

## **VERDAD RESOURCES LLC**

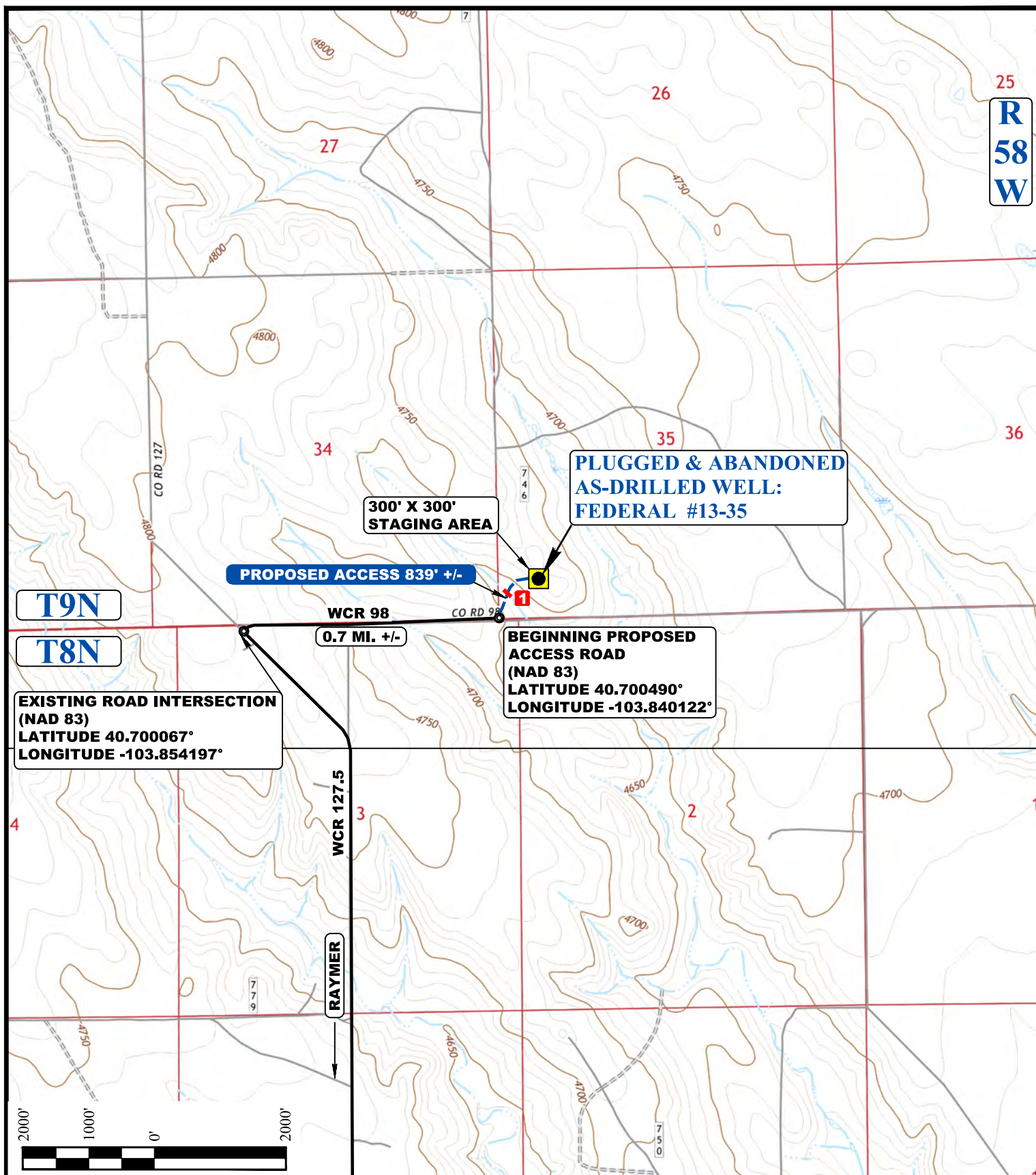
**FEDERAL #13-35  
SW 1/4 SW 1/4, SECTION 35, T9N, R58W, 6th P.M.  
WELD COUNTY, COLORADO**

|                        |            |        |                |
|------------------------|------------|--------|----------------|
| <b>SURVEYED BY</b>     | G.W., J.C. | 4/5/24 |                |
| <b>DRAWN BY</b>        | O.S.J.     | 4/8/24 |                |
| <b>LOCATION PHOTOS</b> |            |        | <b>PHOTO 2</b> |



**UELS, LLC**  
Corporate Office \* 85 South 200 East  
Vernal, UT 84078 \* (435) 789-1017





# **LEGEND:**

- STAGING AREA
- EXISTING ROAD
- PROPOSED ROAD
- DRY & ABANDONED AS-DRILLED WELL
- INSTALL (3) 36" CULVERTS



**UELS, LLC**  
 Corporate Office \* 85 South 200 East  
 Vernal, UT 84078 \* (435) 789-1017



## **VERDAD RESOURCES LLC**

**FEDERAL #13-35**  
 SW 1/4 SW 1/4, SECTION 35, T9N, R58W, 6th P.M.  
 WELD COUNTY, COLORADO

|             |             |        |            |
|-------------|-------------|--------|------------|
| SURVEYED BY | G.W. , J.C. | 4/5/24 | SCALE      |
| DRAWN BY    | O.S.J.      | 4/8/24 | 1 : 24,000 |

## **ACCESS ROAD MAP**