

Project: Mesa County, CO  
 Site: Laramie 0993-29-01  
 Well: Laramie Fed 0993-21-17W  
 Wellbore: OH  
 Design: Design #1  
 Latitude: 39.254585  
 Longitude: -107.783890  
 Ground Level: 7463.0  
 RKB=30'; @ 7493.0usft (TBD)

PROJECT DETAILS: Mesa County, CO  
 Geodetic System: US State Plane 1983  
 Datum: North American Datum 1983  
 Ellipsoid: GRS 1980  
 Zone: Colorado Central Zone  
 System Datum: Mean Sea Level

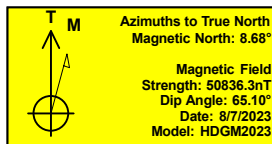
REFERENCE INFORMATION  
 Vertical (TVD) Reference: RKB=30'; @ 7493.0usft (TBD)  
 Section (VS) Reference: Slot - A-14(0.0N, 0.0E)  
 Measured Depth Reference: RKB=30'; @ 7493.0usft (TBD)  
 Calculation Method: Minimum Curvature

#### FORMATION TOP DETAILS

TVDPath	MDPath	Formation
2739.0	2895.9	Wasatch 'G' Sand
3221.0	3417.3	Fort Union
3901.0	4152.9	Lower Wasatch
4684.0	5000.0	Ohio Creek
5092.0	5441.4	Williams Fork
6115.0	6499.3	TOG
7314.0	7698.3	Cameo
7640.0	8024.3	Rollins
8184.0	8568.3	Cozzette
8357.0	8741.3	Corcoran

#### SECTION DETAILS

MD	Inc	Azi	TVD	+N/-S	+E/-W	Dleg	TFace	Vsect	Annotation
0.0	0.00	0.00	0.0	0.0	0.0	0.00	0.00	0.0	
225.0	0.00	0.00	225.0	0.0	0.0	0.00	0.00	0.0	KOP (Build 2.5° / 100)
1122.0	22.43	69.99	1099.3	59.3	162.9	2.50	69.99	173.3	EOB @ 22.43° Inc. / 69.99° Azm
5602.2	22.43	69.99	5240.7	644.1	1768.9	0.00	0.00	1882.5	Drop 2.5° / 100'
6499.3	0.00	0.00	6115.0	703.4	1931.7	2.50	180.00	2055.8	EOD @ Vertical
9091.3	0.00	0.00	8707.0	703.4	1931.7	0.00	0.00	2055.8	TD @ 9091.3' MD / 8707.0' TVD

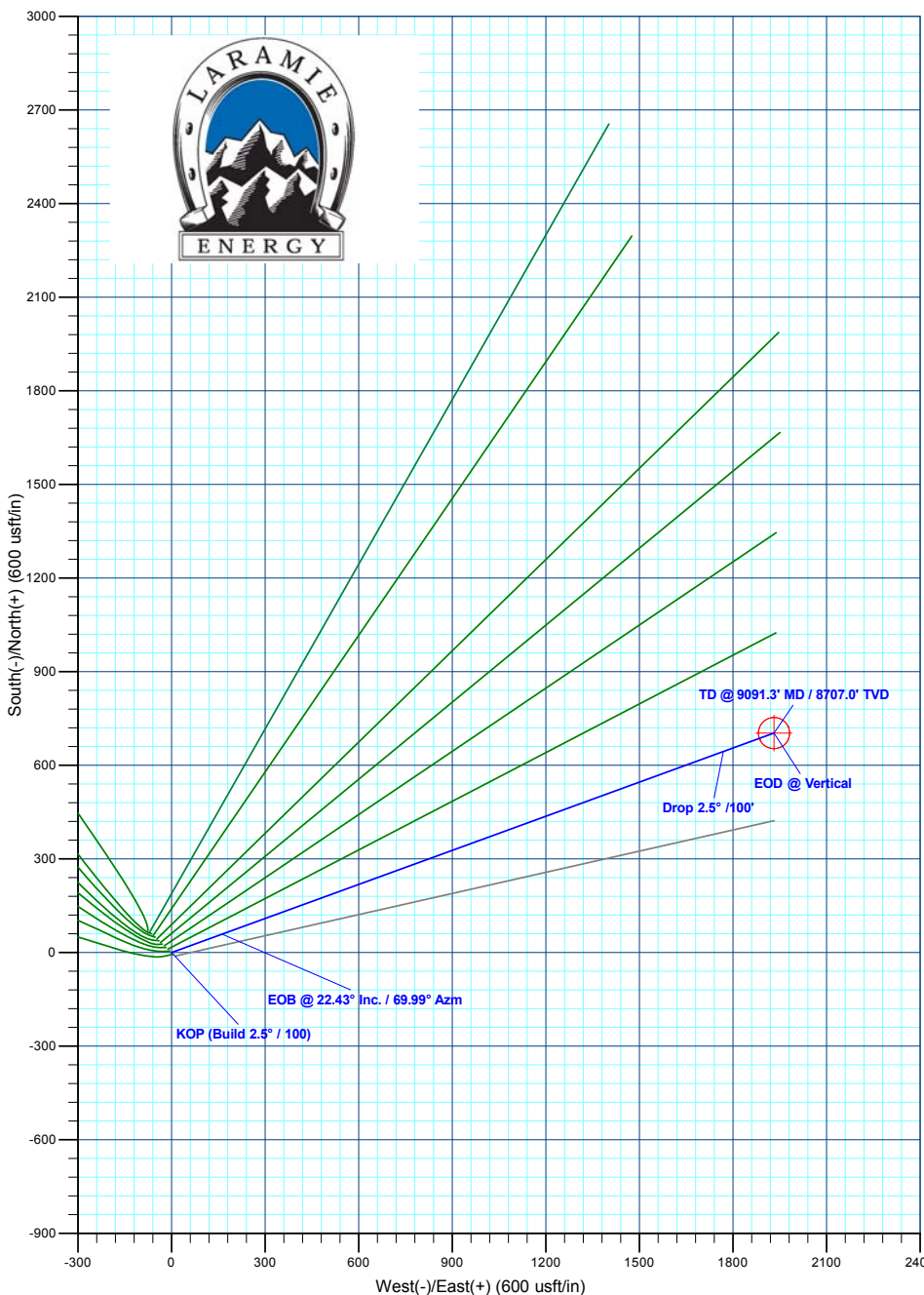
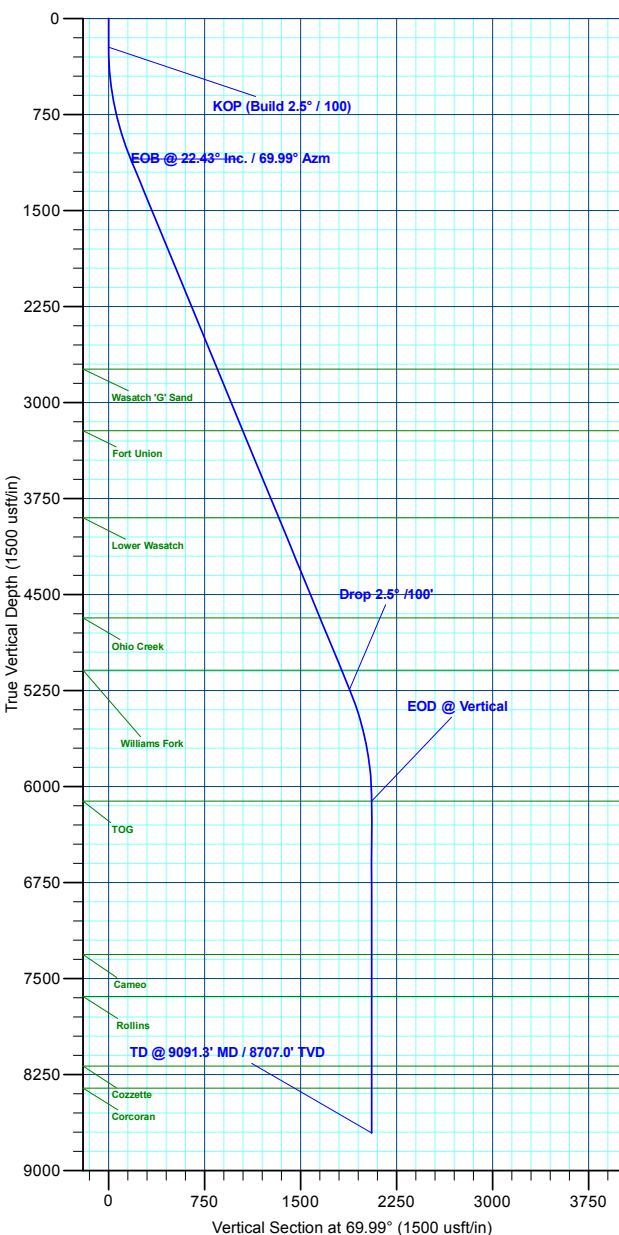


#### DESIGN TARGET DETAILS

Name	TVD	+N/-S	+E/-W	Northing	Easting	Latitude	Longitude
PBHL - Laramie Fed 0993-21-17W	7463.0	703.4	1931.7	1526400.32	2355291.50	39.254585	-107.777068

#### WELL DETAILS: Laramie 29-01 Fed 0993-21-17W

Ground Level : 7463.0		Latitude	Longitude	
Northing	Easting			
1525745.72	2353342.71	39.254585	-107.783890	A-14



Plan: Design #1 (Laramie 29-01 Fed 0993-21-17W/OH)

Created By: Will Jircik Date: 22:21, August 23 2023