

Operator: HPR

Location Name: Anschutz Equus Farms 4-62-28 NWNW

Loc ID: 444840

Inspection: 713900527

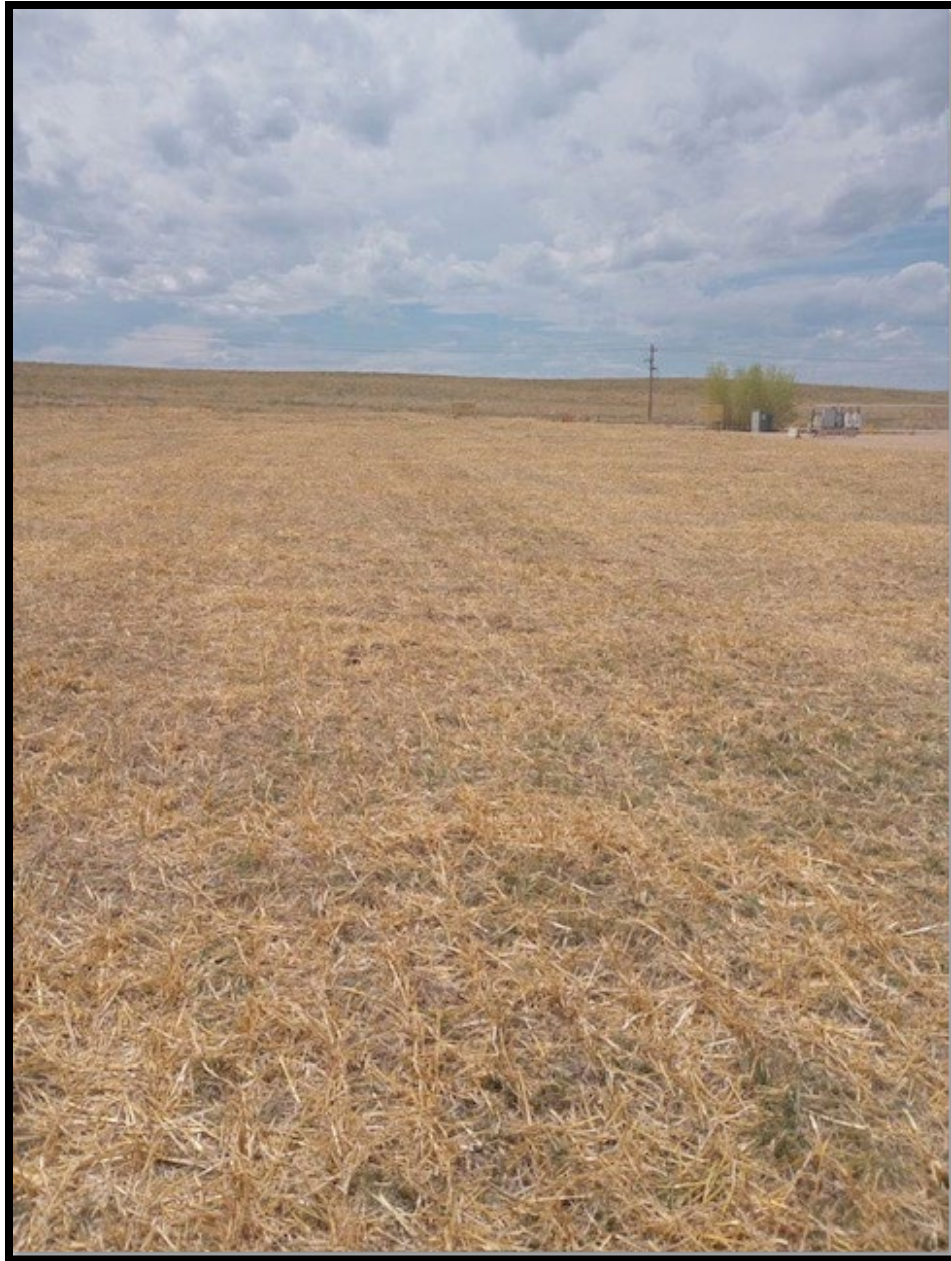


Exhibit A



Exhibit B

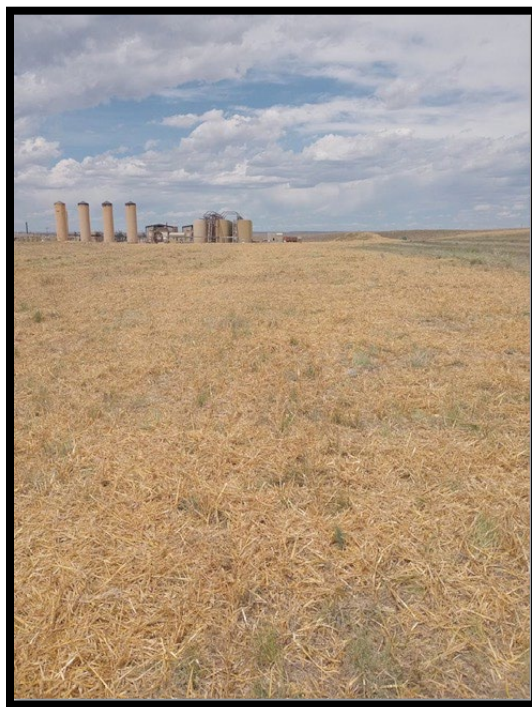


Exhibit C

CA: Weed debris in the form of tumbleweeds were observed around wellheads, production equipment and throughout the interim areas. Tumbleweeds are a troublesome annual non-native weed that easily breaks off at the stem. Operator failed to control and manage weeds to prevent weed waste and prevent the spread of seeds onto adjacent lands. Comply with Rule 606 to remove weed debris.

CA Resolution: Operator has reported the identified tumbleweeds have been addressed and cleared to comply with Rule 606.

CA: Appears interim reclamation activities have been performed to reduce disturbance areas only needed for production operations. Vegetation throughout the interim areas has not met Rule 1003 standards and will remain IN-PROCESS. Operator shall continue to monitor and manage this site until the location meets Rule 1003 standards, including stormwater and weed management. Operator shall submit a Form 4 Interim Reclamation Complete notice when the location meets Rule 1003 standards. ECMC may conduct inspections prior to receiving said notice to ensure compliance with Rule 1003.

CA Resolution: Operator has reported that this location has been seeded, and straw crimped to provide stabilization and promote more uniform future growth. Location currently complies with Rule 1003.