



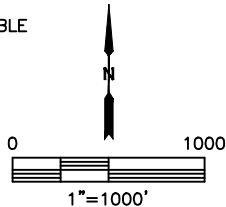
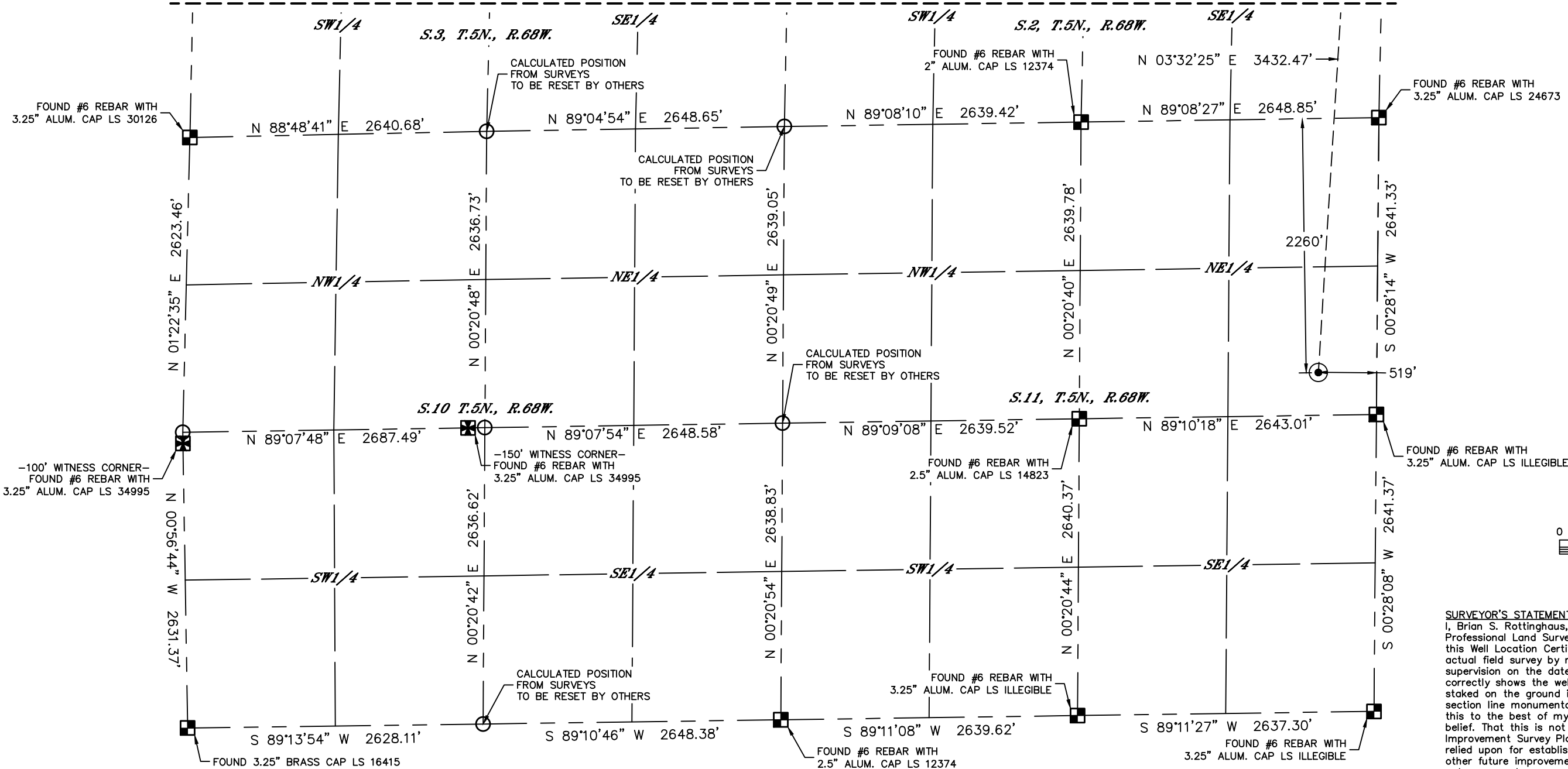
Lat40°, Inc. 6250 W. 10th Street, Unit 2, Greeley, CO 970-515-5294

WELL LOCATION CERTIFICATE

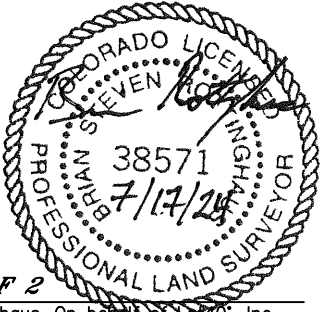
CE 5-68 11-3-2H
BISON OIL & GAS IV

Q: NE4
SECTION: 11
TOWNSHIP: 5N
RANGE: 68W
6TH. P.M.
LARIMER COUNTY, CO

SHEET 2 OF 2



SURVEYOR'S STATEMENT
I, Brian S. Rottinghaus, a Colorado Licensed Professional Land Surveyor, do hereby state that this Well Location Certificate was prepared from an actual field survey by me or under my personal supervision on the date shown hereon, and correctly shows the well surface hole location as staked on the ground in relation to the existing section line monumentation as indicated hereon, all this to the best of my knowledge, information and belief. That this is not a Land Survey Plat or an Improvement Survey Plat, and that it is not to be relied upon for establishment of fence, building, or other future improvement lines. This certificate is not a guaranty or warranty, either expressed or implied.



SHEET 1 OF 2
Brian S. Rottinghaus—On behalf of Lat40°, Inc.
Colorado Licensed Professional Land Surveyor No. 38571
DATE: 7/17/2024
PROJECT#: 2024193

NOTE:
1) Bearings shown are Grid Bearings of the Colorado State Plane Coordinate System, North Zone, North American Datum 1983. The lined dimensions as contained herein are based upon the "U.S. Survey Foot."
2) Distances to section lines measured at 90 degrees from said section lines.
3) Ground elevations are based on an observed GPS elevation (NAVD 1988 DATUM).
4) Latitude and Longitude shown are (NAD 83 DATUM).
5) IMPROVEMENTS: See LOCATION DRAWING for all visible improvements.
6) This map does not represent a boundary survey.
7) According to Colorado law, you must commence any legal action based upon any defect in this W.L.C. within three years after you discover such defect. In no event, may any action based upon any defect in this survey be commenced more than ten years after the date of the certificate shown hereon. (13-80-105 C.R.S.)

CLIENT: BISON OIL & GAS IV				LANDMAN: IAN HOGAN			
INSTRUMENT OPERATOR: CASEY KOHOUT				SURVEY DATE: 6/10/2022		SURFACE USE: CROP LAND	
SHL FOOTAGE		SHL LAT°	SHL LONG°	SHL PDOP	SHL ELEV (FT.)	SHL 1/4/1/4	SHL S-T-R
2260	FNL	519	FEL	40.41551	-104.96605	1.8	4980
						SENE	11-5-68

BHL FOOTAGE		BHL LAT°	BHL LONG°	BHL S-T-R	EP LAT°	EP LONG°	EP S-T-R
1174	FSL	1700	FWL	40.42470	-104.99582	3-5-68	40.42491
							-104.96521
							2-5-68

- LEGEND**
- = ALIQUOT MONUMENT AS DESCRIBED
 - = CALCULATED POSITION
 - ⊙ = SURFACE HOLE LOCATION (SHL)
 - ▲ = ENTRY POINT LOCATION (EP)
 - ◆ = TOP OF PRODUCTIVE ZONE (PZONE)
 - = BOTTOM HOLE LOCATION (BHL)
 - ⊕ = EXISTING WELL
 - ⊖ = ABANDONED WELL

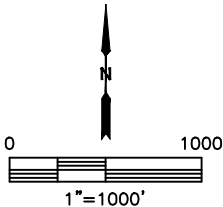
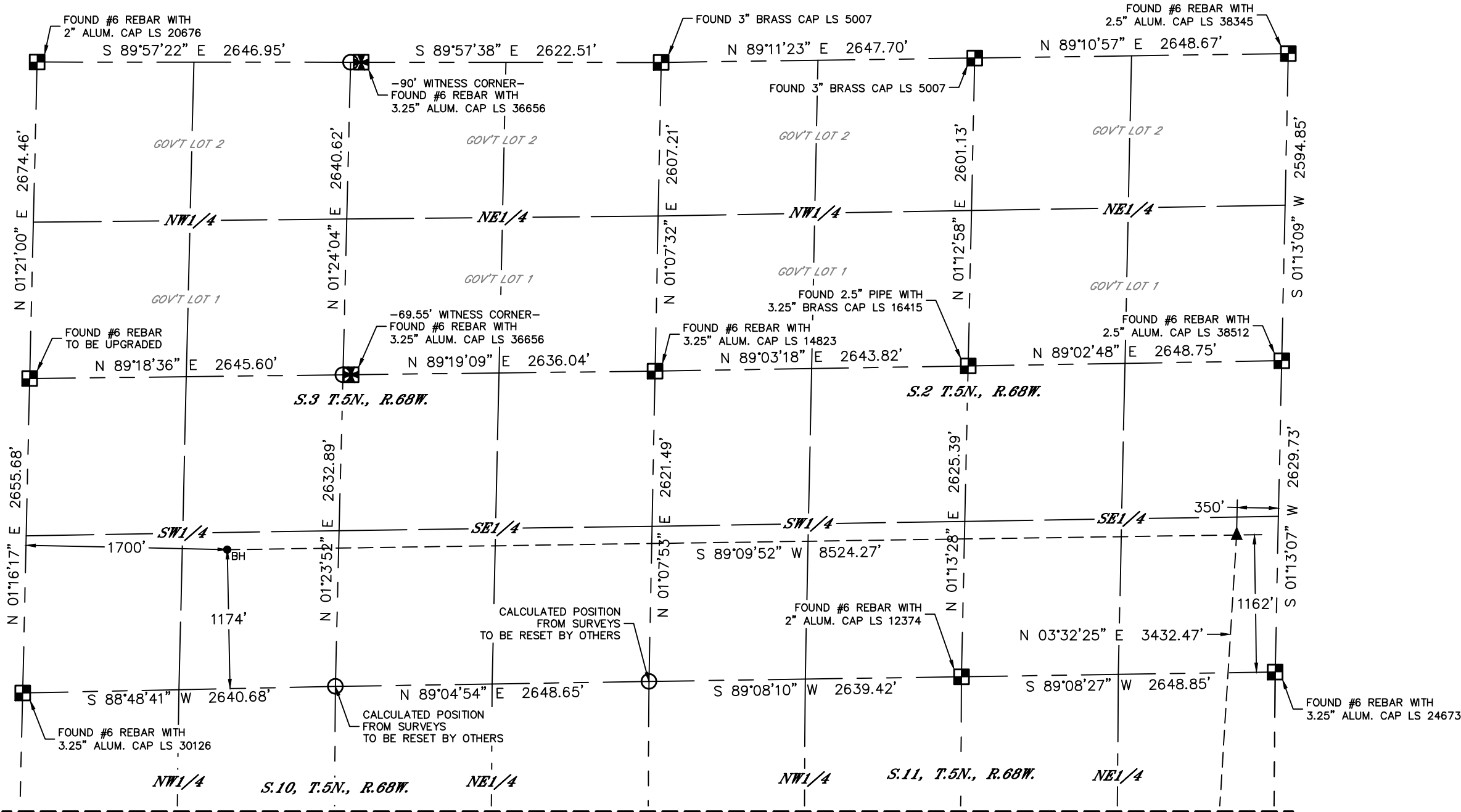


Lat40°, Inc. 6250 W. 10th Street, Unit 2, Greeley, CO 970-515-5294

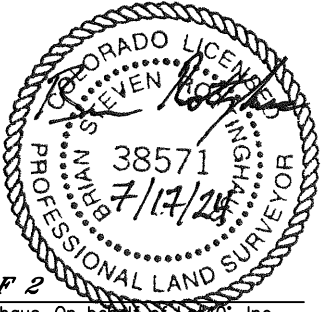
WELL LOCATION CERTIFICATE

CE 5-68 11-3-2H
BISON OIL & GAS IV

Q: NE4
SECTION: 11
TOWNSHIP: 5N
RANGE: 68W
6TH. P.M.
LARIMER COUNTY, CO



SURVEYOR'S STATEMENT
I, Brian S. Rottinghaus, a Colorado Licensed Professional Land Surveyor, do hereby state that this Well Location Certificate was prepared from an actual field survey by me or under my personal supervision on the date shown hereon, and correctly shows the well surface hole location as staked on the ground in relation to the existing section line monumentation as indicated hereon, all this to the best of my knowledge, information and belief. That this is not a Land Survey Plat or an Improvement Survey Plat, and that it is not to be relied upon for establishment of fence, building, or other future improvement lines. This certificate is not a guaranty or warranty, either expressed or implied.



SHEET 2 OF 2
Brian S. Rottinghaus—On behalf of Lat40°, Inc.
Colorado Licensed Professional Land Surveyor No. 38571
DATE: 7/17/2024
PROJECT#: 2024193

- LEGEND**
- = ALIQUOT MONUMENT AS DESCRIBED
 - = CALCULATED POSITION
 - = SURFACE HOLE LOCATION (SHL)
 - ▲ = ENTRY POINT LOCATION (EP)
 - ◆ = TOP OF PRODUCTIVE ZONE (PZONE)
 - = BOTTOM HOLE LOCATION (BHL)
 - ⊙ = EXISTING WELL
 - ⊖ = ABANDONED WELL

CLIENT: BISON OIL & GAS IV					LANDMAN: IAN HOGAN				
INSTRUMENT OPERATOR: CASEY KOHOUT					SURVEY DATE: 6/10/2022		SURFACE USE: CROP LAND		
SHL FOOTAGE		SHL LAT °	SHL LONG °	SHL PDOP	SHL ELEV (FT.)	SHL 1/4/1/4	SHL S-T-R		
2260	FNL	519	FEL	40.41551	-104.96605	1.8	4980	SENE	11-5-68
BHL FOOTAGE		BHL LAT °	BHL LONG °	BHL S-T-R	EP LAT °	EP LONG °	EP S-T-R		
1174	FSL	1700	FWL	40.42470	-104.99582	3-5-68	40.42491	-104.96521	2-5-68

NOTE:
1) Bearings shown are Grid Bearings of the Colorado State Plane Coordinate System, North Zone, North American Datum 1983. The lineal dimensions as contained herein are based upon the "U.S. Survey Foot."
2) Distances to section lines measured at 90 degrees from said section lines.
3) Ground elevations are based on an observed GPS elevation (NAVD 1988 DATUM).
4) Latitude and Longitude shown are (NAD 83 DATUM).
5) IMPROVEMENTS: See LOCATION DRAWING for all visible improvements.
6) This map does not represent a boundary survey.