

Inspection Photos

Location Name: TEP ROCKY MOUNTAIN LLC RWF 342-33 Pad

Location ID: 311599

Jul 31, 2024 at 10:45:29 AM



Photo # 4115 From entrance to location

Jul 31, 2024 at 10:45:34 AM



Photo # 4116 Location

Inspection Photos

Location Name: TEP ROCKY MOUNTAIN LLC RWF 342-33 Pad

Location ID: 311599

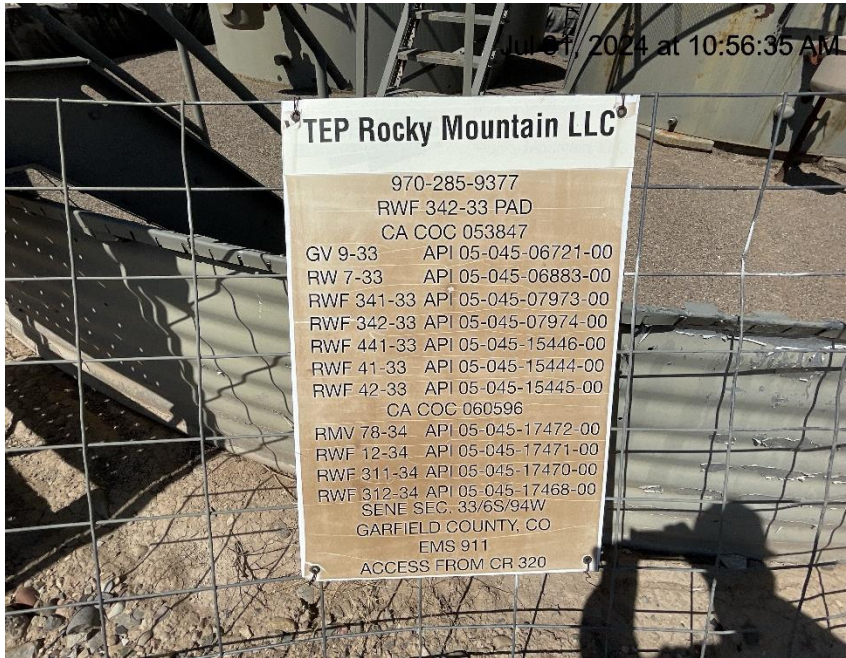


Photo # 4117 Location



Photo # 4118 Location



Inspection Photos

Location Name: TEP ROCKY MOUNTAIN LLC RWF 342-33 Pad

Location ID: 311599



Photo # 4119 Location



Photo # 4120 Location

Inspection Photos

Location Name: TEP ROCKY MOUNTAIN LLC RWF 342-33 Pad

Location ID: 311599



Photo # 4121 Location

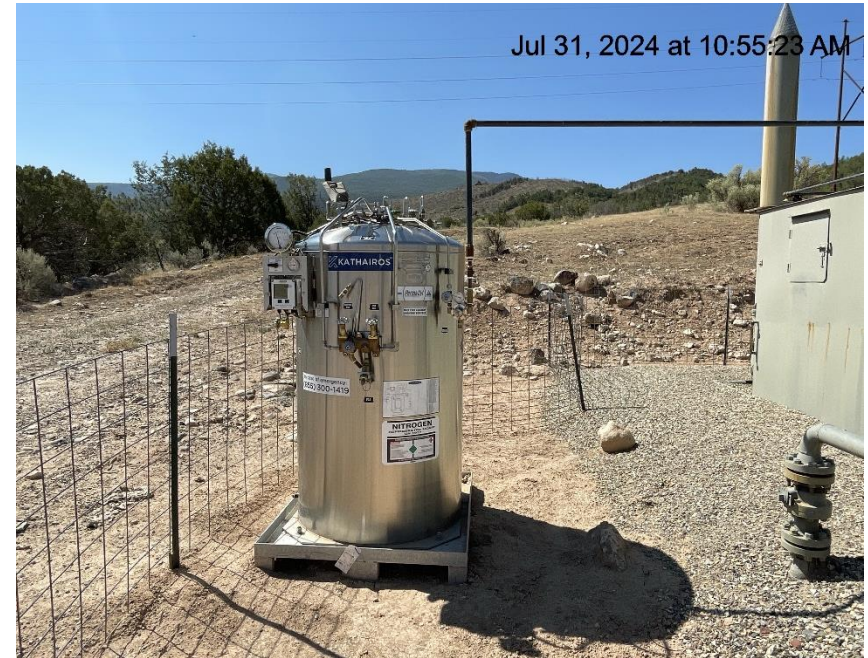


Photo # 4122 Location

Inspection Photos

Location Name: TEP ROCKY MOUNTAIN LLC RWF 342-33 Pad

Location ID: 311599



Photo # 4123 Location



Photo # 4124 Location

Inspection Photos

Location Name: TEP ROCKY MOUNTAIN LLC RWF 342-33 Pad

Location ID: 311599



Photo # 4125 Location



Photo # 4126 Location

Inspection Photos

Location Name: TEP ROCKY MOUNTAIN LLC RWF 342-33 Pad

Location ID: 311599

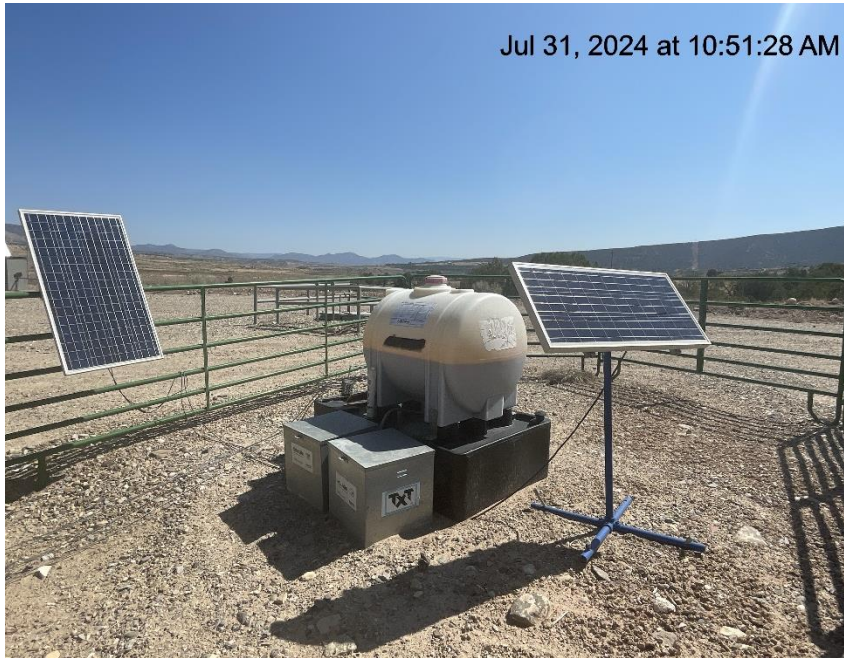


Photo # 4127 Location



Photo # 4128 Open ended load line

Inspection Photos

Location Name: TEP ROCKY MOUNTAIN LLC RWF 342-33 Pad

Location ID: 311599



Photo # 4129 Open ended piping on methanol tank/wildlife hazard



Photo # 4130 Open ended piping on methanol tank/wildlife hazard

Inspection Photos

Location Name: TEP ROCKY MOUNTAIN LLC RWF 342-33 Pad

Location ID: 311599



Photo # 4131 Incorrect capacity on methanol tank

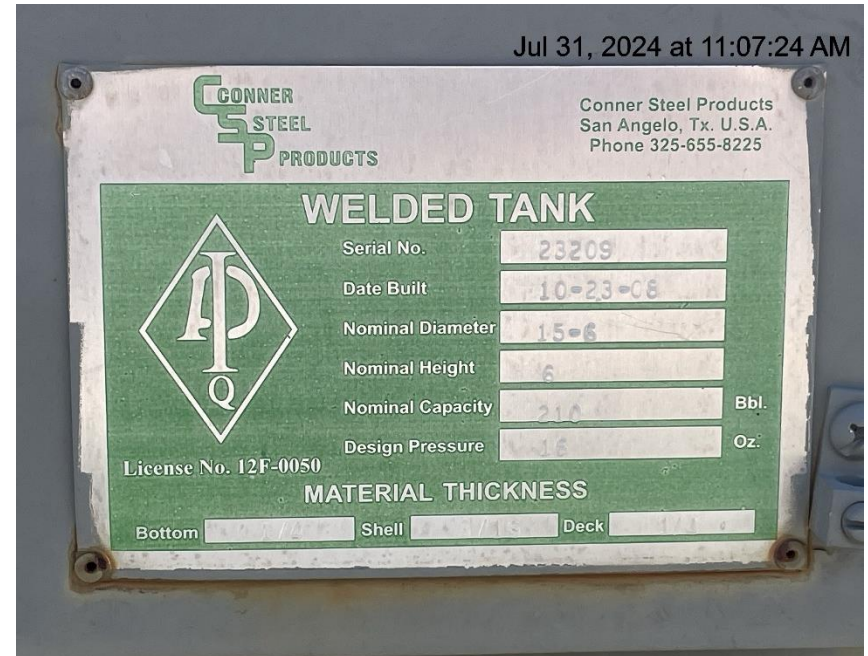


Photo # 4132 Correct tank capacity

Inspection Photos

Location Name: TEP ROCKY MOUNTAIN LLC RWF 342-33 Pad

Location ID: 311599



Photo # 4133 Cellar lacks cover/open to entry by wildlife /wildlife hazard (on lease road approximately 75 yards from entrance to location)



Photo # 4134 Cellar lacks cover/open to entry by wildlife /wildlife hazard (on lease road approximately 75 yards from entrance to location)