

Inspection Photos

Location Name: TEP ROCKY MOUNTAIN LLC CB-TG Land NW 11D-20-692 Pad

Location #: 418555



Jul 25, 2024 at 2:20:27 PM
CO



Jul 25, 2024 at 2:20:42 PM
CO

Photo # 3503 From entrance to location

Photo # 3504 From entrance to location

Inspection Photos

Location Name: TEP ROCKY MOUNTAIN LLC CB-TG Land NW 11D-20-692 Pad

Location #: 418555



Photo # 3505 Location



Photo # 3506 Location

Inspection Photos

Location Name: TEP ROCKY MOUNTAIN LLC CB-TG Land NW 11D-20-692 Pad

Location #: 418555



Photo # 3507 Location



Photo # 3508 Location

Inspection Photos

Location Name: TEP ROCKY MOUNTAIN LLC CB-TG Land NW 11D-20-692 Pad

Location #: 418555



Photo # 3509 Location



Photo # 3510 Location

Inspection Photos

Location Name: TEP ROCKY MOUNTAIN LLC CB-TG Land NW 11D-20-692 Pad

Location #: 418555

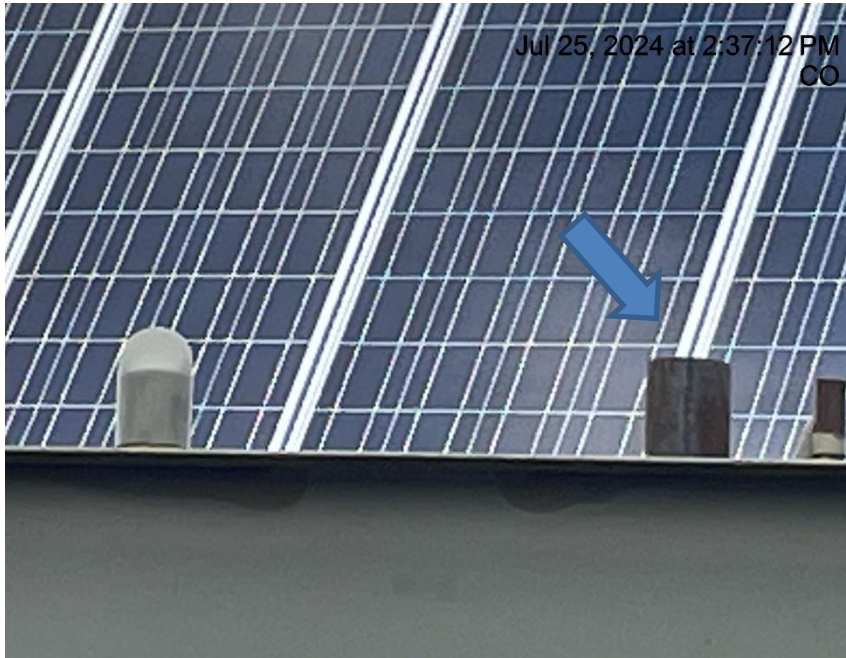


Photo # 3511 PRV vent line on separator unit does not comply with CECMC pressure safety device rules



Photo # 3512 PRV vent line on separator unit does not comply with CECMC pressure safety device rules

Inspection Photos

Location Name: TEP ROCKY MOUNTAIN LLC CB-TG Land NW 11D-20-692 Pad

Location #: 418555



Photo # 3513 Tank label weathered & some required info is starting to become illegible



Photo # 3514 Wellhead sign laying on ground & not properly posted