



**Well Name: SKR-598-35-AV-18**

Original Hole [Land]	
MD (ftKB)	Vertical schematic (actual)
0.0	7 1/16in, Tubing Hanger; 2014-08-28 19:00; 25-25.8; Ext Neck Center Hanger
24.9	Casing Hanger and Pup Joint, 4 1/2in; 25-27.9; 4 1/2; 11.60; N-80; 2007-11-11 12:00
25.9	Casing Hanger and Pup Joint, 8 5/8in; 25-28.7; 8 5/8; 2007-10-07 00:30
27.9	Casing Joints, 8 5/8in; 28.7-71.6; 8 5/8; 24.00; K-55; 2007-10-07 00:30
28.5	Conductor Cement, Casing, 7/30/2007 00:00; 25-95; 2007-07-30
71.5	Casing Joints, 16in; 25-95; 16; 2007-07-30
95.1	Conductor, Actual, 95ftKB; 25-95; 16; 0.00; 2007-07-30; Preset 16-inch conductor
154.9	Casing Joints, 8 5/8in; 71.6-155; 8 5/8; 24.00; K-55; 2007-10-07 00:30
1,087.3	Surface Casing Cement, Casing, 10/7/2007 01:45; 25-1128.7; 2007-10-07 01:45
1,088.6	Casing Joints, 8 5/8in; 155-1087.3; 8 5/8; 24.00; K-55; 2007-10-07 00:30
1,128.0	Float Collar, 8 5/8in; 1087.3-1088.6; 8 5/8; 2007-10-07 00:30
1,128.6	Casing Joints, 8 5/8in; 1088.6-1127.8; 8 5/8; 24.00; K-55; 2007-10-07 00:30
1,149.9	Guide Shoe, 8 5/8in; 1127.8-1128.7; 8 5/8; 2007-10-07 00:30
1,710.0	Surface, Actual, 1128.7ftKB; 25-1128.7; 8 5/8; 24.00; K-55; 2007-10-07 00:30
1,994.1	Casing Joints, 4 1/2in; 27.9-3080.5; 4 1/2; 11.60; N-80; 2007-11-11 12:00
2,144.0	2 3/8in, 161 Jt's DYB; 2014-08-28 19:00; 25.8-5096.1; 162-New 2 3/8" Bare Prod Tbg
3,080.4	Casing Joints, 4 1/2in; 3080.5-3127.5; 4 1/2; 11.60; N-80; 2007-11-11 12:00
3,127.3	Marker Joint, 4 1/2in; 3127.5-3149.8; 4 1/2; 11.60; N-80; 2007-11-11 12:00
3,128.9	Casing Joints, 4 1/2in; 3149.8-4215.6; 4 1/2; 11.60; N-80; 2007-11-11 12:00
3,149.6	Production Casing Cement, Casing, 11/11/2007 16:30; 1710-6214.6; 2007-11-11 16:30
3,495.1	Casing Joints, 4 1/2in; 4215.6-4262.6; 4 1/2; 11.60; N-80; 2007-11-11 12:00
4,155.8	Marker Joint, 4 1/2in; 4262.6-4284.9; 4 1/2; 11.60; N-80; 2007-11-11 12:00
4,215.6	4,156.0-4,400.0ftKB on 1/22/2009 12:00 (Perforated); 4156-4400; 2009-01-22 12:00
4,262.8	4,456.0-4,672.0ftKB on 1/20/2009 18:00 (Perforated); 4456-4672; 2009-01-20 18:00
4,284.8	4,750.0-4,986.0ftKB on 1/20/2009 12:00 (Perforated); 4750-4986; 2009-01-20 12:00
4,399.9	1.9 in, Tubing Plunger, 2/9/2015 12:00; 5094.1-5095.1; 2015-02-09 12:00
4,456.0	1.9 in, Bumper Spring, 2/9/2015 12:00; 5095.1-5096.1; 2015-02-09 12:00
4,671.9	2 3/8in, X Nipple; 2014-08-28 19:00; 5096.1-5097.3; 2 3/8 "X" Nipple
4,675.0	5,036.0-5,178.0ftKB on 1/19/2009 18:00 (Perforated); 5036-5178; 2009-01-19 18:00
4,985.9	2 3/8in, 1 Jt DYB; 2014-08-28 19:00; 5097.3-5128.4; 1-New 2 3/8" Bare Prod Tbg
5,036.1	2 3/8in, XN Nipple; 2014-08-28 19:00; 5128.4-5129.6; 2 3/8 "XN" Nipple
5,094.2	2 3/8in, 2 3/8" X 6" DYB Pup Jt; 2014-08-28 19:00; 5129.6-5135.7; New 2 3/8" Bare Pup Jt
5,095.1	3 1/16in, Bit-sub Housing; 2014-08-28 19:00; 5135.7-5136.5; Bit-sub Housing
5,096.1	Tubing - Production set at 5,136.5ftKB on 8/28/2014 19:00; 2014-08-28 19:00; 0-5136.5; 2 3/8" DYB
5,097.1	Casing Joints, 4 1/2in; 4284.9-6165.5; 4 1/2; 11.60; N-80; 2007-11-11 12:00
5,128.3	5,266.0-5,490.0ftKB on 1/19/2009 14:00 (Perforated); 5266-5490; 2009-01-19 14:00
5,129.6	5,574.0-5,812.0ftKB on 1/18/2009 12:00 (Perforated); 5574-5812; 2009-01-18 12:00
5,135.8	
5,136.5	
5,178.1	
5,266.1	
5,490.2	
5,574.1	
5,745.1	
5,812.0	
5,813.0	
5,950.1	
6,099.1	
6,155.8	4 in, Fill (Sand / Mud / Debris), 2/9/2015 11:30; 6156-6163.2; 2015-02-09 11:30
6,163.1	3 1/16 in, Pumped Off Bit-sub, 4/27/2009 15:00; 6163.2-6164.4; 2009-04-27 15:00
6,164.4	3 3/4 in, Mill, 4/27/2009 15:00; 6164.4-6165.6; 2009-04-27 15:00
6,165.7	Float Collar, 4 1/2in; 6165.5-6166.8; 4 1/2; 2007-11-11 12:00
6,167.0	4 in, PBTD, <DITmRun>; 6165.6-6214.6
6,198.2	Casing Joints, 4 1/2in; 6166.8-6213.6; 4 1/2; 11.60; N-80; 2007-11-11 12:00
6,213.6	Guide Shoe, 4 1/2in; 6213.6-6214.6; 4 1/2; 2007-11-11 12:00
6,214.6	Production Casing, Actual, 6214.6ftKB; 25-6214.6; 4 1/2; 11.60; N-80; 2007-11-11 12:00
6,250.0	
6,399.9	

Well Header							
Surface UWI 0504514393		Asset Team Piceance		Production Tree Location Land			
Original RKB Elevation (ft) 6,135.00		Original KB to Ground (ft) 25.00		Original Spud Date 10/5/2007		Abandon Date	
Range 98W			Well Sub-Status			High Pressure N	
Directions To Well From Debeque CO - 13 miles North on Roan Creek Road. Turn right at the "Cowboy Chapel" on Clear Creek Road and travel 4.6 miles to Guard Shack at Hiner Gate. Check in with Security and proceed 3.0 miles to Location.				Latitude (°) 39.57466		Longitude (°) -108.353507	
Comment							

Congressional Location							
Quarter 3	Quarter 4	Section	Township	Township N/S Dir	Range	Range E/W Dir	

Rig Operator			
Rig/Unit Supervisor Benny Wright			

Daily Cost Summary			
Sum of Field Est (Cost) 0			

Wellbore Plug Back Total Depths			
Date	PBTD (ftKB)	Method	Com
11/11/2007	6,166		Casing float shoe

Wellbore Sections			
Section Des	Hole Size (in)	Top Depth (ftKB)	Btm Depth (ftKB)
	24	25.0	95.0
	12 1/4	95.0	1,150.0
	7 7/8	1,150.0	6,198.0
	24	25.0	95.0
	12 1/4	95.0	1,150.0
	7 7/8	1,150.0	6,250.0

Zone Statuses		
Zone Name	Status Date	Status

Casing Strings						
Conductor, Actual, 95ftKB						
Casing Description Conductor	Run Date 7/30/2007	OD (in) 16	Wt/Len (lb/ft) 	Grade 	Top Depth (M) 25	Set Depth (M) 95

Surface, Actual, 1128.7ftKB						
Casing Description Surface	Run Date 10/7/2007	OD (in) 8 5/8	Wt/Len (lb/ft) 24.00	Grade K-55	Top Depth (M) 25	Set Depth (M) 1128.7

Production Casing, Actual, 6214.6ftKB						
Casing Description Production Casing	Run Date 11/11/2007	OD (in) 4 1/2	Wt/Len (lb/ft) 11.60	Grade N-80	Top Depth (M) 25	Set Depth (M) 6214.6

Cement			
Des	Start Date	Top (ftKB)	Btm (ftKB)
Conductor Cement	7/30/2007	25.0	95.0
Surface Casing Cement	10/7/2007	25.0	1,128.7
Production Casing Cement	11/11/2007	1,710.0	6,214.6

Proposed Cement		
Des	Top (ftKB)	Btm (ftKB)

Tubing Strings							
Tubing Description Tubing - Production	Run Date 8/28/2014	String Mark 2 3/8	ID (in) 1.995	Wt (lb/ft) 4.70	Grade L-80	Len (ft) 5,136.49	Set Depth (ft) 4,968.8

Tubing Components							
Item Des	OD (in)	Wt (lb/ft)	Grade	Jts	Len (ft)	Btm (ftKB)	Btm (TVD) (ftKB)
KBGL					25.00	25.0	25.0
Tubing Hanger	7 1/16				0.80	25.8	25.8
161 Jt's DYB	2 3/8	4.70	L-80	161	5,070.28	5,096.1	4,928.4
X Nipple	2 3/8				1.18	5,097.3	4,929.6
1 Jt DYB	2 3/8	4.70	L-80	1	31.11	5,128.4	4,960.7
XN Nipple	2 3/8				1.27	5,129.6	4,962.0
2 3/8" X 6' DYB Pup Jt	2 3/8	4.70	L-80		6.05	5,135.7	4,968.0

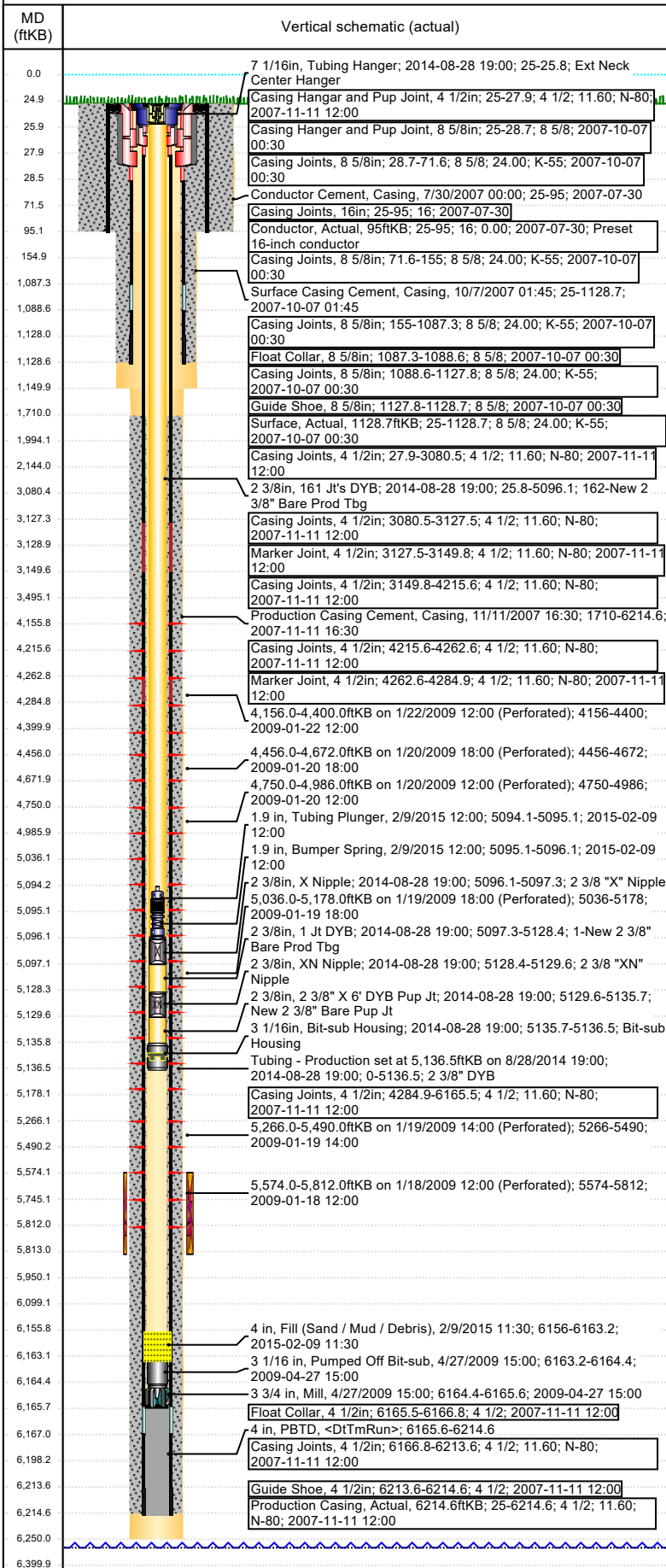


# Wellbore Schematic Input Report

Well Name: SKR-598-35-AV-18

Original Hole [Land]

Vertical schematic (actual)



## Tubing Components

Item Des	OD (in)	Wt (lb/ft)	Grade	Jts	Len (ft)	Btm (ftKB)	Btm (TVD) (ftKB)
Bit-sub Housing	3 1/16				0.80	5,136.5	4,968.8
Tubing Landed @						5,136.5	4,968.8

## Other In Hole

Run Date	Des	Make	OD (in)	Top (ftKB)	Btm (ftKB)
4/27/2009	PBDT		4	6,165.6	6,214.6
4/27/2009	Mill		3 3/4	6,164.4	6,165.6
4/27/2009	Pumped Off Bit-sub		3 1/16	6,163.2	6,164.4
2/9/2015	Fill (Sand / Mud / Debris)		4	6,156.0	6,163.2
2/9/2015	Bumper Spring		1.9	5,095.1	5,096.1
2/9/2015	Tubing Plunger		1.9	5,094.1	5,095.1

## Proposed Other In Hole

Des	Make	OD (in)	Top (ftKB)	Btm (ftKB)

## Logs

Date	Type	Depth Top (MD) (ftKB)	Btm (ftKB)
3/29/2008	LOGMEM		

## Perforation Data

Linked Zone	Sum of Entered Shot Total	Top (ftKB)	Btm (ftKB)	Date
Mesa Verde - WMFK - Williams Fork, Origin	30	4,156.0	4,400.0	1/22/2009
Mesa Verde - WMFK - Williams Fork, Origin	30	4,456.0	4,672.0	1/20/2009
Mesa Verde - WMFK - Williams Fork, Origin	30	4,750.0	4,986.0	1/20/2009
Mesa Verde - WMFK - Williams Fork, Origin	27	5,036.0	5,178.0	1/19/2009
Mesa Verde - WMFK - Williams Fork, Origin	24	5,266.0	5,490.0	1/19/2009
Mesa Verde - WMFK - Cameo Coal, Origin	30	5,574.0	5,812.0	1/18/2009
<b>Total</b>	<b>171</b>			

## Job Supply Amounts

Supply Item Des	Job Supply Type	Unit L	Job Category	Total Re	Total Co	Total Re

## Daily Cost Breakdown by Category

Field Est (Cost)	Description	Note