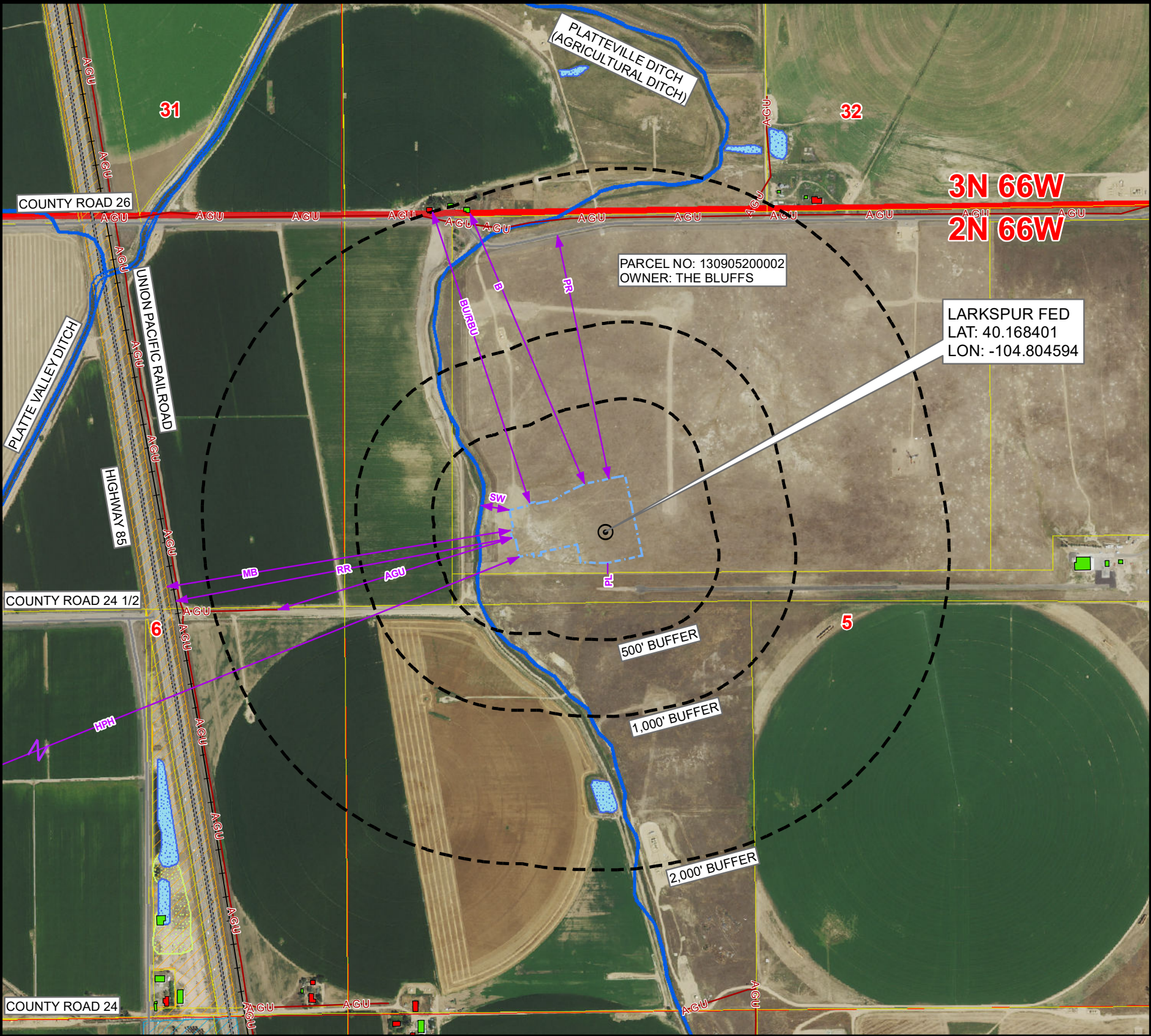


CULTURAL FEATURES MAP  
LARKSPUR FED

SECTION 5, TOWNSHIP 2 NORTH, RANGE 66 WEST, 6TH P.M., WELD COUNTY, COLORADO



# OF CULTURAL FEATURES WITHIN	0-500 FEET	501-1,000 FEET	1,001-2,000 FEET
BUILDING UNIT (RESIDENTIAL & NON-RESIDENTIAL)	0	0	0
RESIDENTIAL BUILDING UNIT	0	0	0
HIGH OCCUPANCY BUILDING UNIT	0	0	0
SCHOOL PROPERTY	0	0	0
SCHOOL FACILITY	0	0	0
DESIGNATED OUTSIDE ACTIVITY AREA	0	0	0

NOTE:  
THIS MAP IS A COMPILATION OF PUBLICLY AVAILABLE DATA. THE ACCURACY AND COMPLETENESS OF SAID DATA HAS NOT BEEN VERIFIED BY 609 CONSULTING, LLC. EXISTING CONDITIONS MAY DIFFER FROM WHAT IS SHOWN.

MEASURED FROM THE NEAREST		EDGE OF WORKING PAD
B	BUILDING	±1918' N
BU	BUILDING UNIT	±2001' N
RBU	RESIDENTIAL BUILDING UNIT	±2001' N
HOB	HIGH OCCUPANCY BUILDING UNIT	5280'+ N
DOAA	DESIGNATED OUTSIDE ACTIVITY AREA	5280'+ W
PR	PUBLIC ROAD	±1622' N
AGU	ABOVE GROUND UTILITY	±1598' W
RR	RAILROAD	±2228' W
PL	PROPERTY LINE	±72' S
S	SCHOOL FACILITY	5280'+ N
CC	CHILD CARE CENTER	5280'+ N
DIC	DISPROPORTIONATELY IMPACTED COMMUNITY BOUNDARY	5280'+ S
MB	MUNICIPALITY BOUNDARY	±2269' W
CB	COUNTY BOUNDARY	5280'+ S
SW	SURFACE WATER	±190' W
PWS	PUBLIC WATER SYSTEM SUPPLY WELL	2640'+ E
HPH	HIGH PRIORITY HABITAT	±4159' W
RHSD	RBU, HOB, OR SCHOOL FACILITY WITHIN A DI COMMUNITY	5280'+ S

Legend

- PROPOSED REFERENCE POINT

PROPOSED WORKING PAD SURFACE

BUFFER

BUILDING

NON-RESIDENTIAL BUILDING UNIT

RESIDENTIAL BUILDING UNIT

HEALTH FACILITY

SCHOOL FACILITY

CHILD CARE FACILITY

ABOVE GROUND UTILITY

PUBLIC ROAD
- RAILROAD

DITCH/CANAL/DRAINAGE/CREEK

DISPROPORTIONATELY IMPACTED COMMUNITY

PARCEL BOUNDARY

PLATTEVILLE JURISDICTIONAL BOUNDARY

FORT LUPTON JURISDICTIONAL BOUNDARY

RULE 411.b 2640' BUFFER

100-YEAR FLOODPLAIN (EFFECTIVE, 2016)

100-YEAR FLOODWAY (PRELIMINARY, 2020)
- 100-YEAR FLOODPLAIN (PRELIMINARY, 2020)

RIPARIAN CORRIDOR

RIVERINE CORRIDOR

FRESHWATER EMERGENT WETLAND

FRESHWATER FORESTED/SHRUB WETLAND

LAKE

FRESHWATER POND

DELINEATED/POTENTIAL WETLAND

**Kerr-McGee Oil & Gas Onshore LP**  
1099 18th Street  
Denver, Colorado 80202



**LOVELAND OFFICE**  
6706 North Franklin Avenue  
Loveland, Colorado 80538  
Phone 970-776-4331  
**SHERIDAN OFFICE**  
1095 Saberton Avenue  
Sheridan, Wyoming 82801  
Phone 307-674-0609



Drawn by: AK  
Revised:  
Date: 8 Mar 2024

NAD83 CO-Nft  
Scale: 1" = 750ft