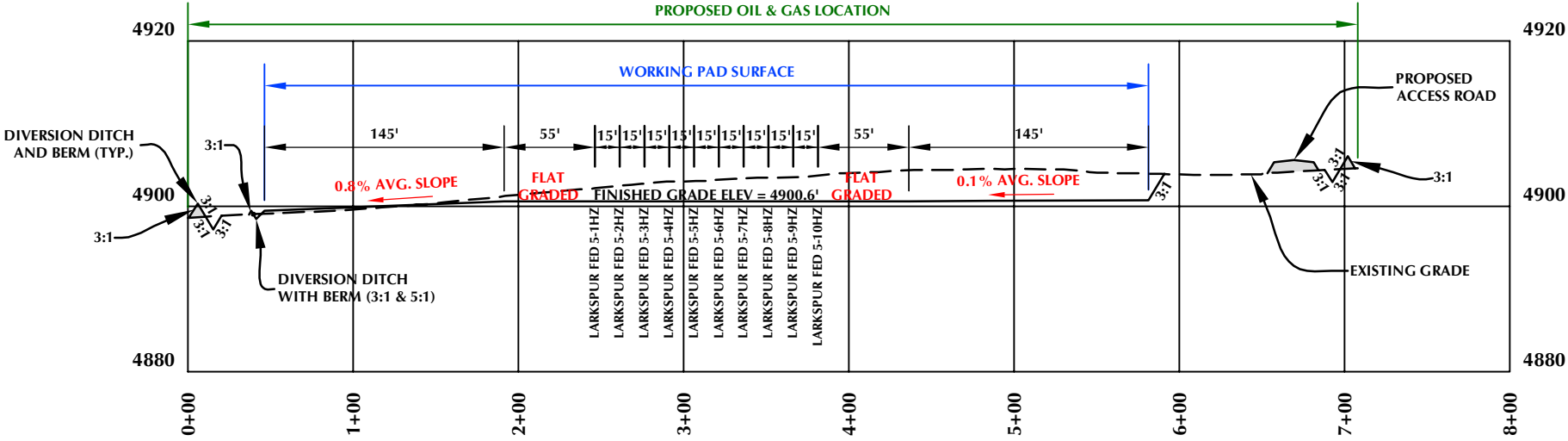
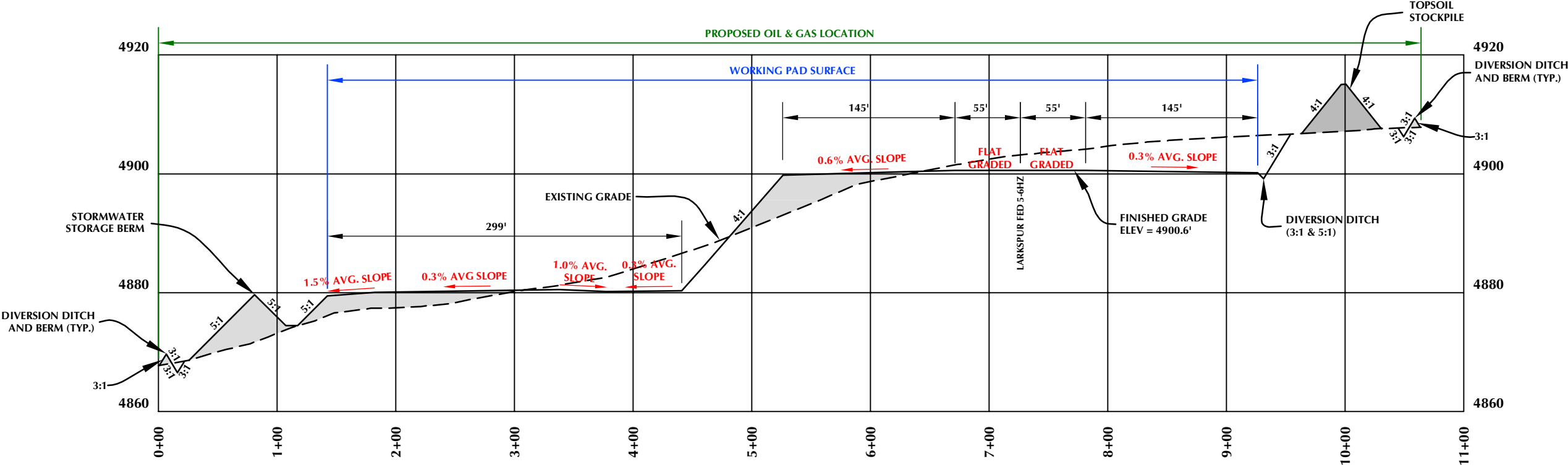




K:\ANDAKO\2023\2023_125_LARKSPUR_FED_T2N_R66W_SEC_5\DWG\LARKSPUR_FED_T2N_R66W_SEC_5.dwg, 3/4/2024 7:11:12 PM, sundreg



CROSS SECTION A-A'



CROSS SECTION B-B'

LARKSPUR FED
LARKSPUR FED 5-1HZ, LARKSPUR FED 5-2HZ, LARKSPUR FED 5-3HZ, LARKSPUR FED 5-4HZ, LARKSPUR FED 5-5HZ, LARKSPUR FED 5-6HZ, LARKSPUR FED 5-7HZ, LARKSPUR FED 5-8HZ, LARKSPUR FED 5-9HZ & LARKSPUR FED 5-10HZ LOCATED IN SECTION 5, T2N, R66W, 6TH P.M. WELD COUNTY, COLORADO

CONSTRUCTION LAYOUT DRAWING - CROSS SECTIONS
--

Kerr-McGee Oil & Gas Onshore LP 1099 18th Street Denver, Colorado 80202
--

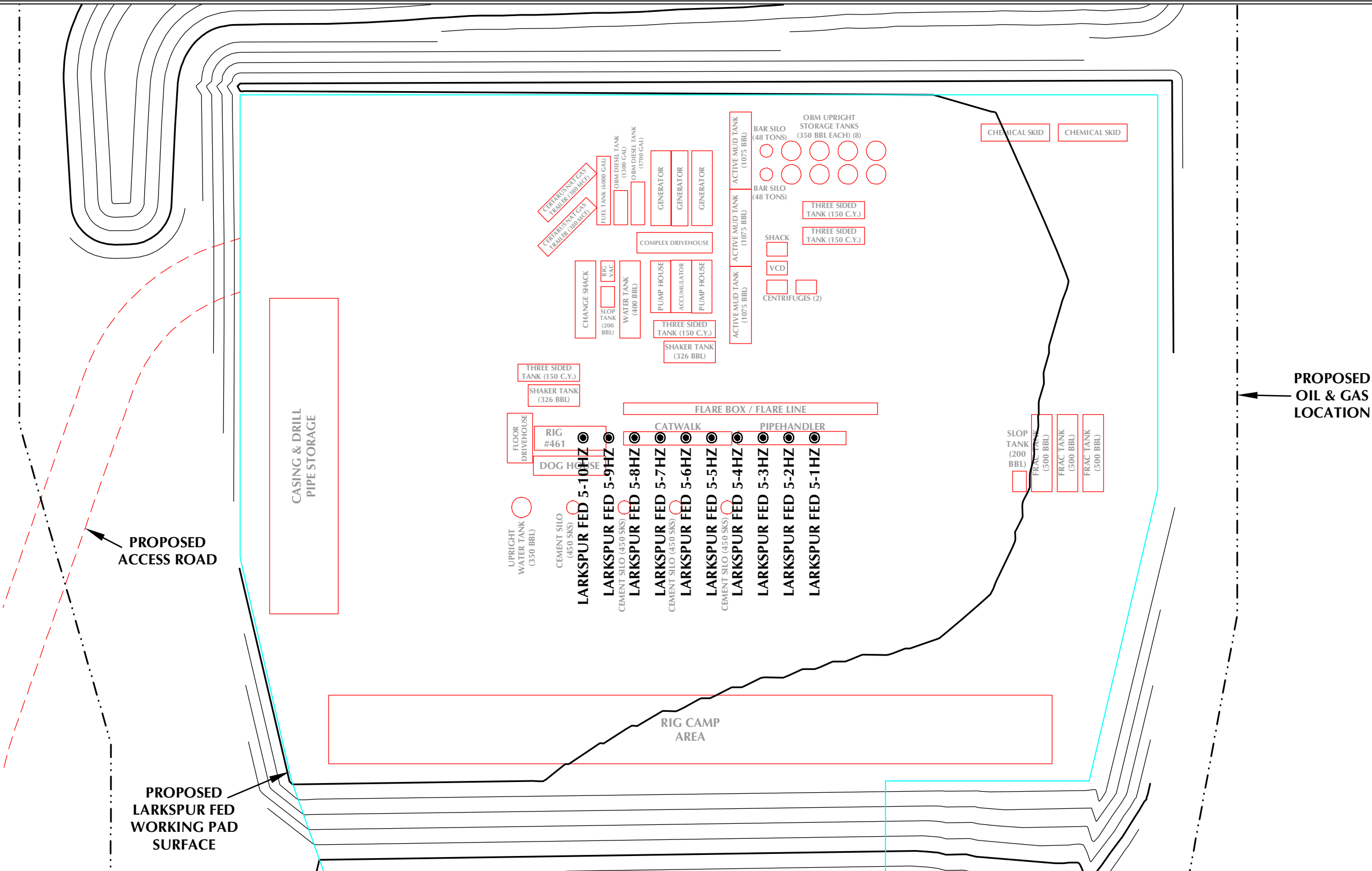
 609 CONSULTING, LLC	LOVELAND OFFICE 6706 North Franklin Avenue Loveland, Colorado 80538 Phone 970-776-4331 SHERIDAN OFFICE 1095 Saberton Avenue Sheridan, Wyoming 82801 Phone 307-674-0609
---	---

<div><div>HORIZONTAL</div><div><div>0</div><div>50'</div><div>100'</div></div><div>1" = 100'</div></div>		
<div><div>VERTICAL</div><div><div>0</div><div>10'</div><div>20'</div></div><div>1" = 20'</div></div>		
SCALE: 1"=100'	DATE: 3/4/24	SHEET NO:
REVISED:		<div>1</div> <div>1 OF 1</div>

PRELIMINARY RIG LAYOUT DRAWING

LARKSPUR FED

S1/2 NW1/4 SECTION 5, TOWNSHIP 2 NORTH, RANGE 66 WEST, 6TH P.M., WELD COUNTY, COLORADO



- LEGEND**
- PROPOSED WELL
 - EXISTING WELL
 - - - PROPOSED OIL & GAS LOCATION
 - ▭ PROPOSED WORKING PAD SURFACE
 - PROPOSED 2' CONTOUR



LOVELAND OFFICE
6706 North Franklin Avenue
Loveland, Colorado 80538
Phone 970-776-4331

SHERIDAN OFFICE
1095 Saberton Avenue
Sheridan, Wyoming 82801
Phone 307-674-0609

**Kerr-McGee Oil &
Gas Onshore LP**

1099 18th Street
Denver, Colorado 80202

SCALE: 1" = 60'
DATE SURVEYED: 11/30/23
DATE: 3/4/24
DRAFTER: GLK
REVISED:

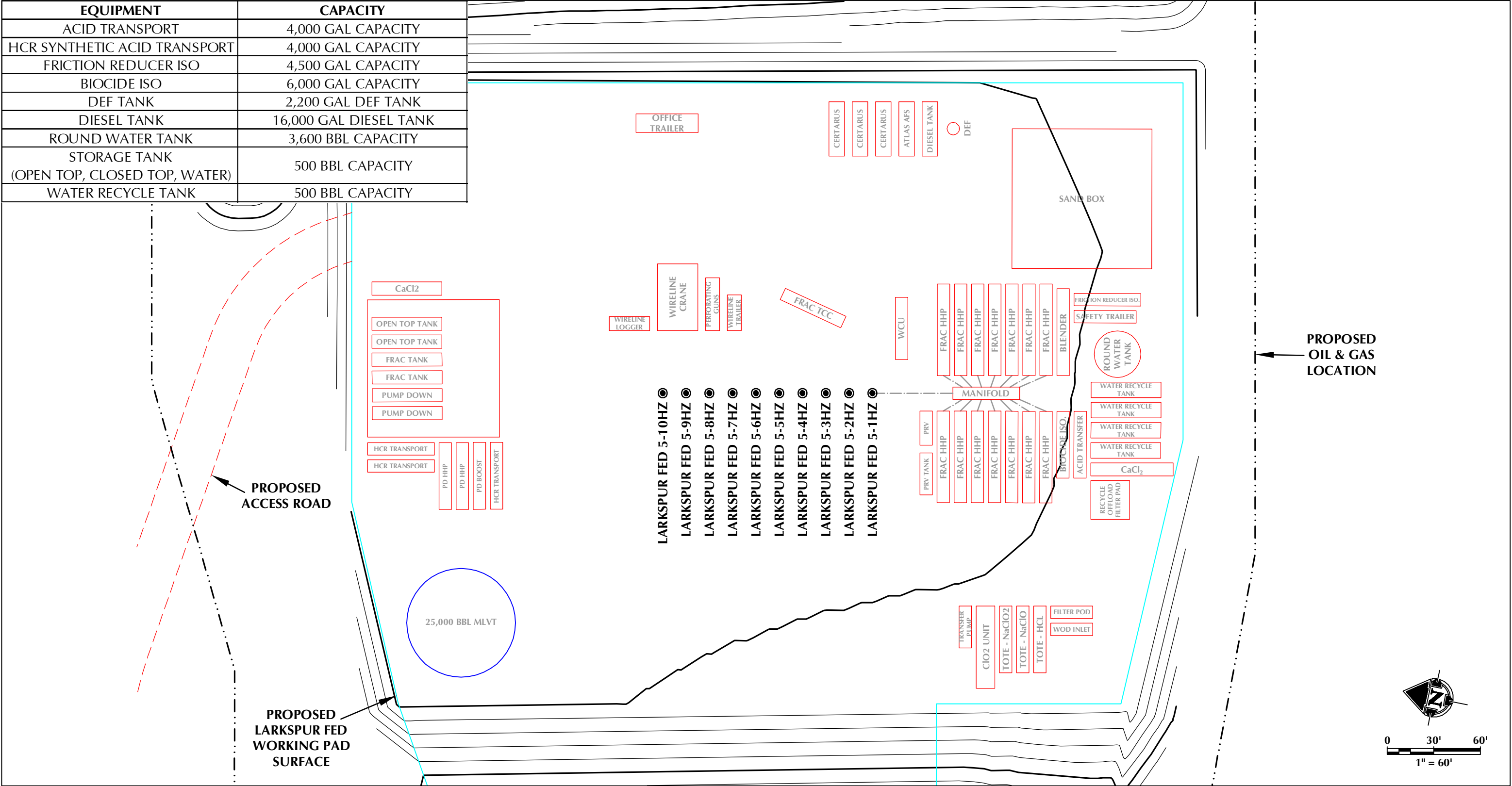
NOTE:
1. RIG PROFILE IS APPROXIMATE AND SUBJECT TO MODIFICATION DUE TO SPECIFIC CIRCUMSTANCES.

PRELIMINARY WELL COMPLETION AND STIMULATION LAYOUT DRAWING

LARKSPUR FED

S1/2 NW1/4 SECTION 5, TOWNSHIP 2 NORTH, RANGE 66 WEST, 6TH P.M., WELD COUNTY, COLORADO

EQUIPMENT	CAPACITY
ACID TRANSPORT	4,000 GAL CAPACITY
HCR SYNTHETIC ACID TRANSPORT	4,000 GAL CAPACITY
FRICTION REDUCER ISO	4,500 GAL CAPACITY
BIOCIDE ISO	6,000 GAL CAPACITY
DEF TANK	2,200 GAL DEF TANK
DIESEL TANK	16,000 GAL DIESEL TANK
ROUND WATER TANK	3,600 BBL CAPACITY
STORAGE TANK (OPEN TOP, CLOSED TOP, WATER)	500 BBL CAPACITY
WATER RECYCLE TANK	500 BBL CAPACITY



- LEGEND
- PROPOSED WELL
 - EXISTING WELL
 - PROPOSED OIL & GAS LOCATION
 - PROPOSED WORKING PAD SURFACE
 - PROPOSED 2' CONTOUR



LOVELAND OFFICE
6706 North Franklin Avenue
Loveland, Colorado 80538
Phone 970-776-4331

SHERIDAN OFFICE
1095 Saberton Avenue
Sheridan, Wyoming 82801
Phone 307-674-0609

Kerr-McGee Oil &
Gas Onshore LP

1099 18th Street
Denver, Colorado 80202

SCALE: 1" = 60'

DATE SURVEYED: 11/30/23

DATE: 3/4/24

DRAFTER: GLK

REVISED:

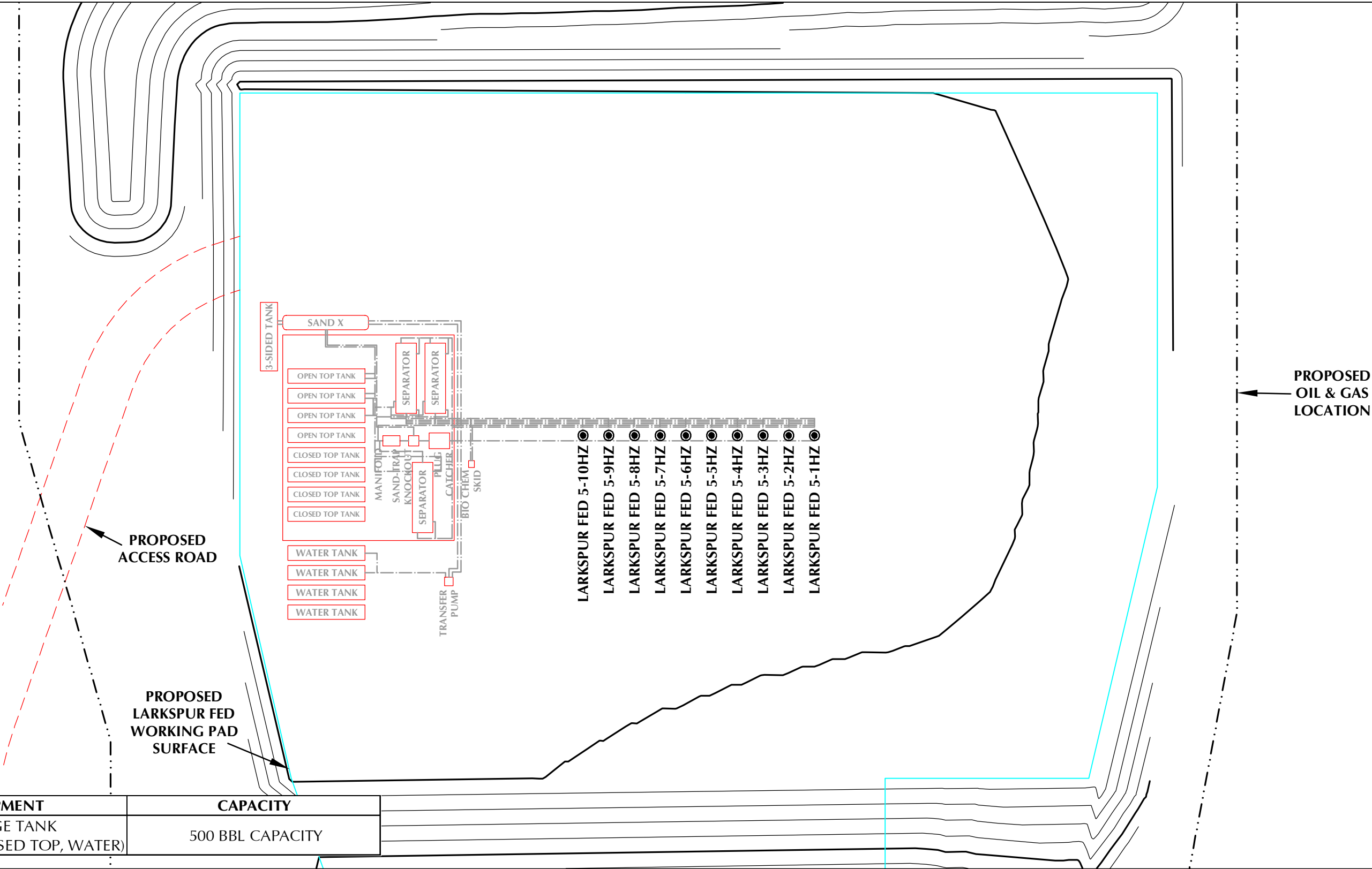
NOTE:

1. COMPLETION AND STIMULATION LAYOUT IS APPROXIMATE AND SUBJECT TO MODIFICATION DUE TO SPECIFIC CIRCUMSTANCES.

PRELIMINARY FLOWBACK EQUIPMENT LAYOUT DRAWING

LARKSPUR FED

S1/2 NW1/4 SECTION 5, TOWNSHIP 2 NORTH, RANGE 66 WEST, 6TH P.M., WELD COUNTY, COLORADO



K:\ANADARKO\2023\23_125_LARKSPUR_FED_T2N_R66W_SEC_5D\MG\LARKSPUR_FED_T2N_R66W_SEC_5.dwg, 3/4/2024 8:02:14 PM, sandbeg



LOVELAND OFFICE
6706 North Franklin Avenue
Loveland, Colorado 80538
Phone 970-776-4331

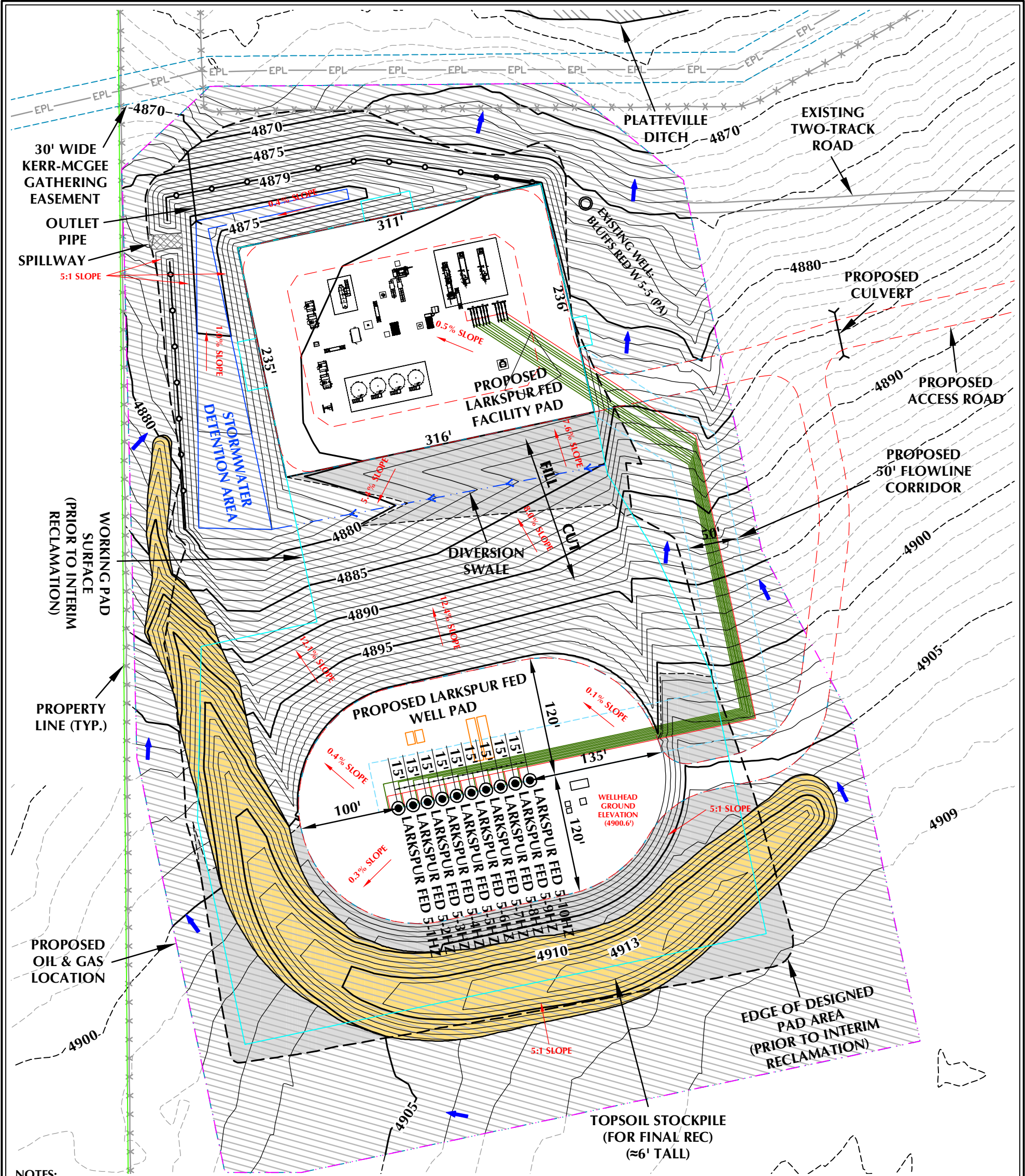
SHERIDAN OFFICE
1095 Saberton Avenue
Sheridan, Wyoming 82801
Phone 307-674-0609

**Kerr-McGee Oil &
Gas Onshore LP**

1099 18th Street
Denver, Colorado 80202

SCALE:
DATE SURVEYED:
DATE:
DRAFTER:
REVISED:

1" = 60'
11/30/23
3/4/24
GLK



- NOTES:
- PIPELINE AND UTILITY CORRIDORS ARE PLANNED AND DETERMINED BY THIRD PARTY COMPANIES. SPECIFIC PIPELINE AND UTILITY CORRIDOR LOCATIONS WILL BE DECIDED BY THOSE THIRD PARTY COMPANIES CLOSER TO THE START DATE OF OPERATIONS BASED ON CONTRACT AND RIGHT-OF-WAY NEGOTIATIONS.
 - EXISTING UTILITIES DISPLAYED ON THE GRADING PLAN ARE FOR REFERENCE PURPOSES ONLY. PRIOR TO CONSTRUCTION OR EARTHWORK, CONTRACTOR WILL BE RESPONSIBLE TO CALL FOR LOCATES: (800) 922-1987
 - THE 6' TALL TOPSOIL STOCKPILE IS TO BE CONSTRUCTED UTILIZING ±7,404 C.Y. OF BASE MATERIAL AT APPROXIMATELY 4' FEET OF HEIGHT AND COVERED WITH ±3,012 C.Y. OF TOPSOIL TO REACH THE EFFECTIVE 6' HEIGHT.
 - RECLAIMED AREA WILL BE RE-SEEDING AND RE-VEGETATED DURING INTERIM RECLAMATION.

LARKSPUR FED FACILITY LAYOUT DRAWING

QUANTITIES AND DESIGN PARAMETERS

SHRINKAGE FACTOR = 1.00
SWELL FACTOR = 1.00
PROPOSED OIL & GAS LOCATION = 15.36 ACRES
AREA RECLAIMED DURING INTERIM RECLAMATION = 11.63 ACRES
TOTAL WELL PAD AREA AFTER INTERIM RECLAMATION = 1.93 ACRES
TOTAL FACILITY PAD AREA AFTER INTERIM RECLAMATION = 1.80 ACRES

PAD QUANTITIES

TOTAL CUT = 24,148 C.Y.
TOTAL FILL = 24,148 C.Y.
TOTAL TOPSOIL @ 6" DEPTH FROM CONSTRUCTION PHASE = 8,190 C.Y.
TOPSOIL USED FOR INTERIM REC = 5,178 C.Y.
TOPSOIL STORED FOR FINAL REC = 3,012 C.Y.

LAND USE: RANGELAND
FACILITY REVISION: LARKSPUR-PP-2020 REV D

LARKSPUR FED

FACILITY LAYOUT DRAWING
LARKSPUR FED 5-1HZ, LARKSPUR FED 5-2HZ,
LARKSPUR FED 5-3HZ, LARKSPUR FED 5-4HZ,
LARKSPUR FED 5-5HZ, LARKSPUR FED 5-6HZ,
LARKSPUR FED 5-7HZ, LARKSPUR FED 5-8HZ,
LARKSPUR FED 5-9HZ & LARKSPUR FED 5-10HZ
LOCATED IN SECTION 5, T2N, R66W, 6TH P.M.
WELD COUNTY, COLORADO

Kerr-McGee Oil &
Gas Onshore LP
1099 18th Street
Denver, Colorado 80202



CONSULTING, LLC

LOVELAND OFFICE
6706 North Franklin Avenue
Loveland, Colorado 80538
Phone 970-776-4331
SHERIDAN OFFICE
1095 Saberton Avenue
Sheridan, Wyoming 82801
Phone 307-674-0609

LEGEND

- EXISTING WELL LOCATION
- PROPOSED WELL LOCATION
- EXISTING CONTOURS (1' INTERVAL)
- PROPOSED CONTOURS (1' INTERVAL)
- EPL
- EXISTING PIPELINE
- PROPOSED FLOWLINE
- EXISTING FENCE
- RECLAMATION AREA
- PLANNED FLOW DIRECTION
- WORKING PAD SURFACE (WPS)
- BERM



HORIZONTAL 0 50' 100' 1" = 100'

1' CONTOURS

SCALE: 1"=100' DATE: 3/4/24 SHEET NO:

REVISED: 1 1 OF 2

