

A

D Wireline

Services

CEMENT BOND LOG
GAMMA RAY CCL

00068400

LOG NO.

COMPANY Gerrity Oil & Gas Corporation

WELL Hein W 19-4

CENTRAL TX

FIELD Wattenberg

COUNTY Weld

STATE Colorado

LOCATION
NW NW

OTHER SERVICES
Perforate 2 1/8" RTG

SEC 19 TWP 2N RGE 10W

PERMANENT DATUM Ground level ELEV 4856'
LOG MEASURED FROM Kelly Bushing 10 FT ABOVE PERM DATUM
DRILLING MEASURED FROM Kelly Bushing

ELEV K B 4856'
D F 4856'
GL 4856'

Date 25-Sept. 93

Run No. One

Type Log C&I-CR-DOL-CCL

Depth-Driller 7613'

Depth-Logger 7513'

Bottom logged interval 7506'

Top logged interval 3400'

Type fluid in hole Water

Max rec temp., deg F. N.R.

Operating rig time Portable Mast

Recorded by D. Daniels Unit # 102

Witnessed by Mitch Trimble

Bore-Hole Record

Tubing Record

Run No.	Bit	From	To	Size	Wgt.	From	To
---------	-----	------	----	------	------	------	----

--	--	--	--	--	--	--	--

--	--	--	--	--	--	--	--

--	--	--	--	--	--	--	--

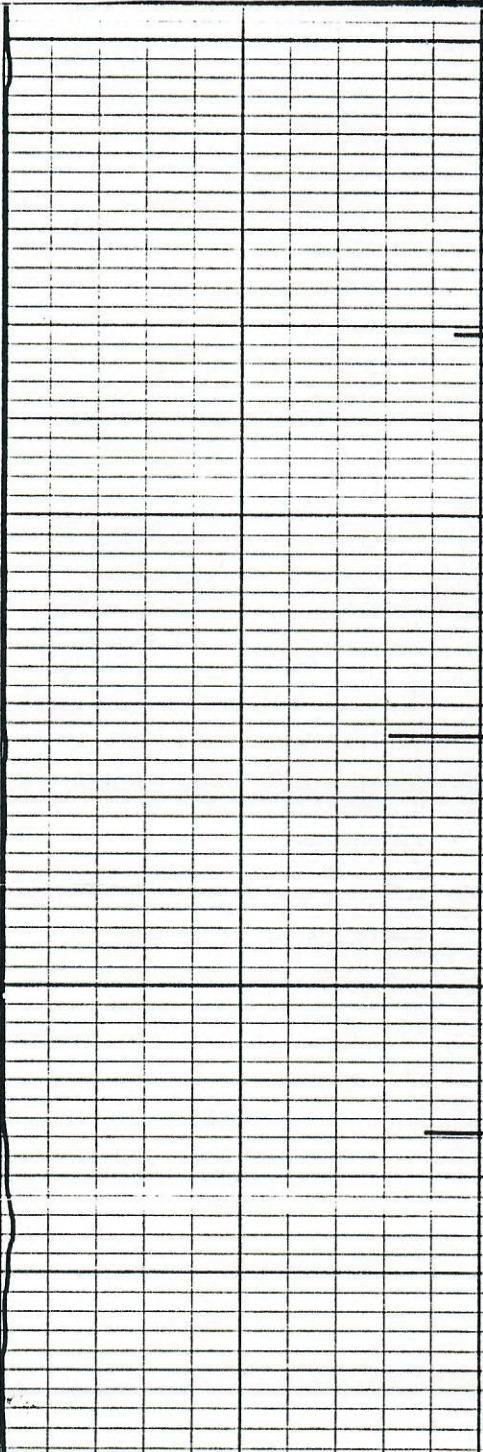
Casing Record

Liner

Size	Wgt.	From	To	Size	Wgt.	From	To
------	------	------	----	------	------	------	----

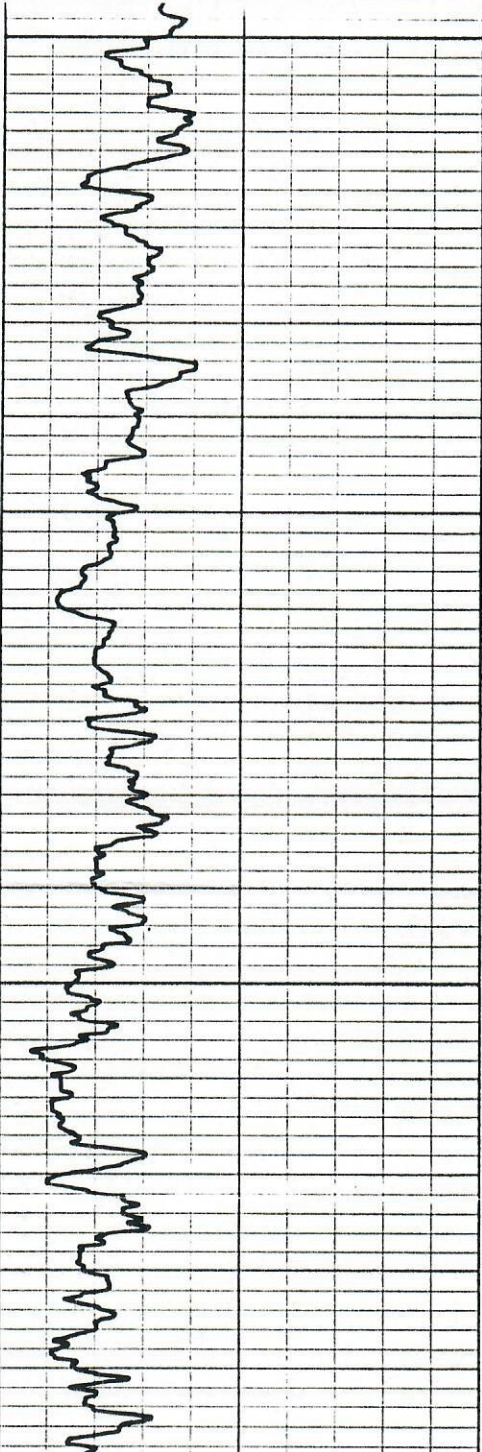
2 5/8"		Surface	1081'				
--------	--	---------	-------	--	--	--	--

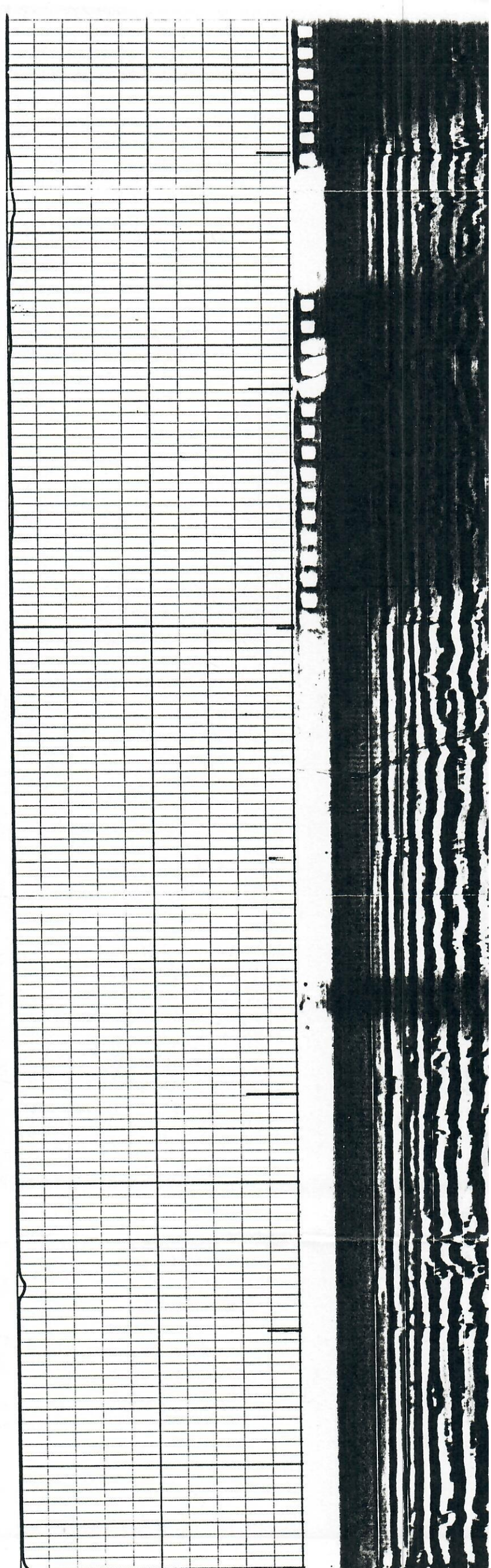
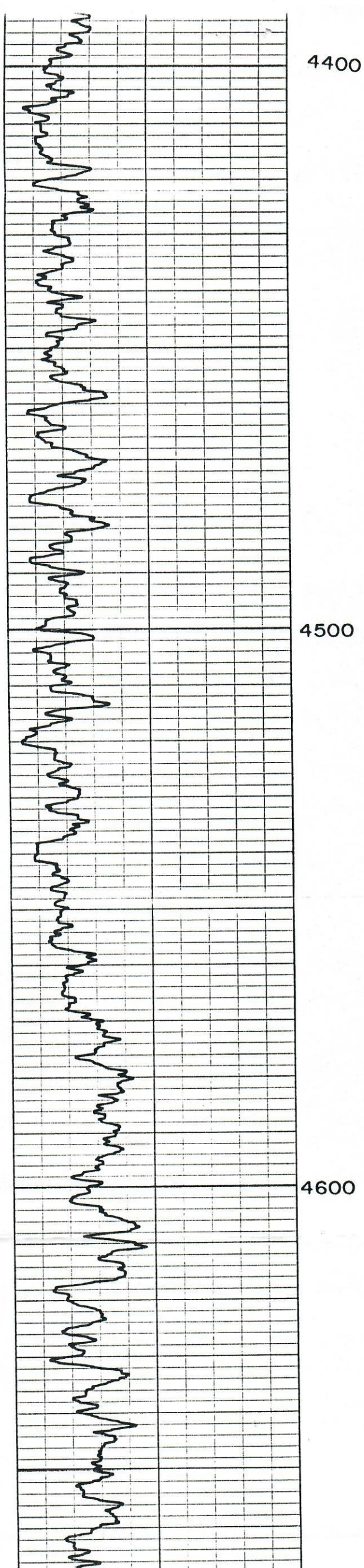
3 1/2"		Surface	T.O.				
--------	--	---------	------	--	--	--	--

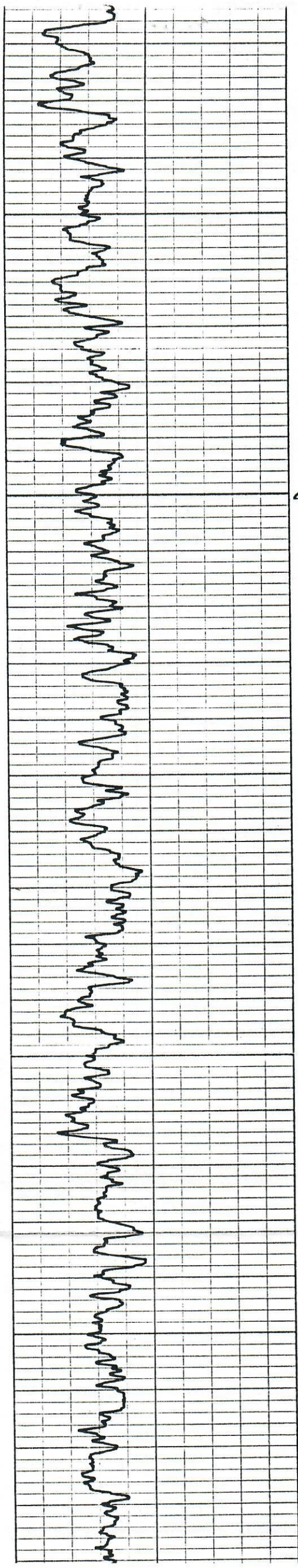


4300

4400







4700

4800

