

FAHEY OIL & GAS - 28780
FRIEND & MEYER 2
API # 005-06466

Prepared DTA 4/29/2024
QC MJH

Loc. # 320669

FIELD NAME FAIRWAY - #22510

Spud Date 5/1/1981

Basin DENVER - JULESBURG

Location NESE 2 4S 63W 6

Elevation GL (ft) 5547

Elevation KB (ft) 5557

TD (ft) 7771

PBTD (ft)

Formation Tops

DENVER - 165'

UPPER ARAPAHOE - 443'

LOWER ARAPAHOE - 764'

FOX HILLS TOP - 1264'

FOX HILLS BASE - 1450'

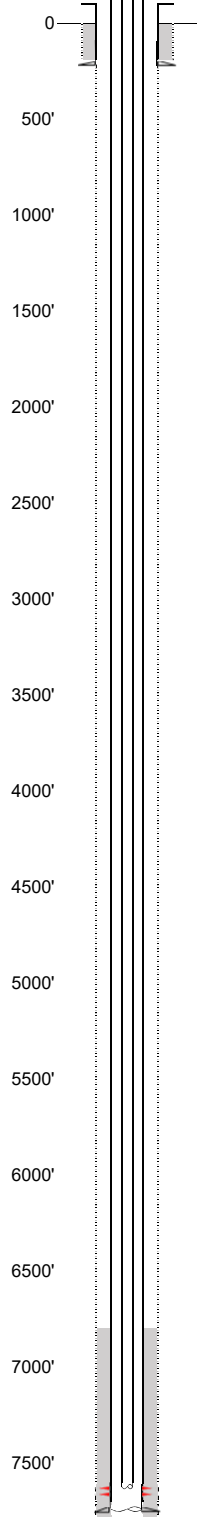
Base of Upper Pierre - 2560'

No SUSSEX Fm Production w/in 1 mi.
SUSSEX - 4601'

SHANNON - 4821'

No SHANNON Fm Production w/in 1 mi.

EXISTING



Existing Casing and Cement Coverage

SURF: Size: 8.625", Hole Size: 12.25 in.

Depth: 243 ft., Weight: 24

Cement: 200 sx, Top: 0 ft., Method: Vis

Deepest DWR w/in 1 mi. = 600'

1ST, Size: 4.5", Hole Size: 7.875"

Depth: 7771 ft, Weight: 11.6

Cement: 225 sx, TOC: 6750', Method: CALC

2 3/8" tubing @ 7580'

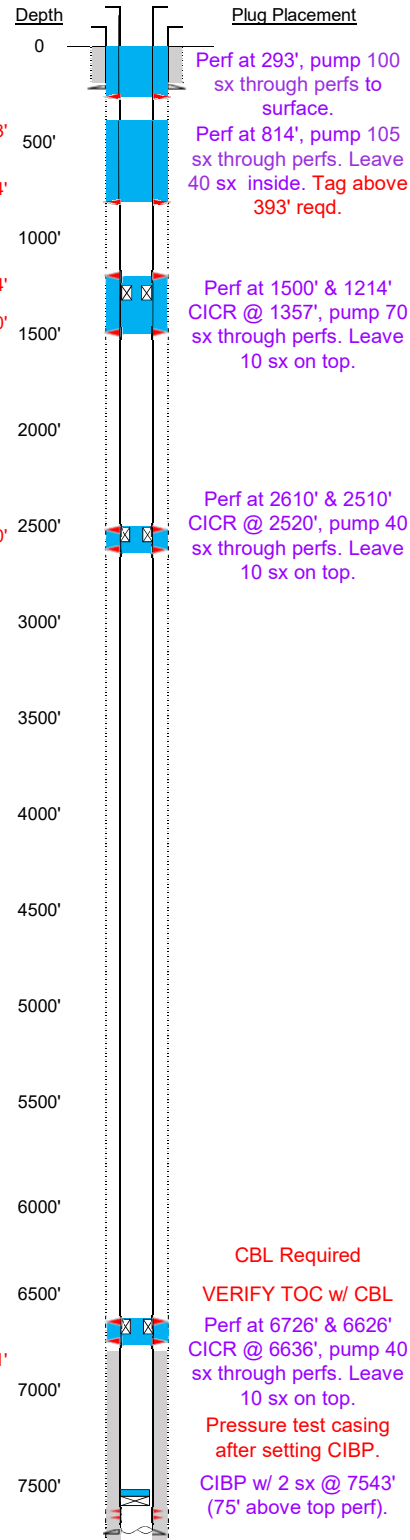
TOC = 6750' (CALC by ECMC)

J Sand Perfs 7618' - 7632'

PBTD (ft) UNK

TD (ft) 7771'

PROPOSED



Depth

Plug Placement

Perf at 293', pump 100
sx through perfs to
surface.

Perf at 814', pump 105
sx through perfs. Leave
40 sx inside. Tag above
393' reqd.

Perf at 1500' & 1214'
CICR @ 1357', pump 70
sx through perfs. Leave
10 sx on top.

Perf at 2610' & 2510'
CICR @ 2520', pump 40
sx through perfs. Leave
10 sx on top.

CBL Required

VERIFY TOC w/ CBL

Perf at 6726' & 6626'
CICR @ 6636', pump 40
sx through perfs. Leave
10 sx on top.

Pressure test casing
after setting CIBP.

CIBP w/ 2 sx @ 7543'
(75' above top perf).