

Company				CHEVRON			
Well				NEI C18-21D			
Field				WATTENBERG			
County				WELD			
State				COLORADO			
Location:				API # : 05-123-34396			
Other Services				NONE			
Permanent Datum				SEC. 18 TWP. 4N RGE. 64W			
Log Measured From				GL KB 13 Elevation 4966'			
Drilling Measured From				KB Above Perm. Datum			
Date of Service				08-APRIL-2024			
Run Number				ONE			
Depth Driller or PBTD				7310'			
Depth Logger				6590			
Bottom Log Interval				6585'			
Top Log Interval				7.875"			
Open Hole Size				WATER			
Type Fluid				FULL			
Fluid Level				NA			
Fluid Density				SEE LOG			
Max. Recorded Temperature				ZERO			
Max. Wellhead Pressure				2.375 SWEDGE			
Wellhead Connection				SEE LOG			
Estimated Cement Top				3791			
Unit Number				1/4"			
Wireline Size				PLATTEVILLE, CO			
Location				P COOPER			
Recorded By				C. JONES			
Witnessed By							
Size				Wt/Ft			
Tubing Record				2.3/8" 4.7#			
Surface Casing				8.5/8" 23#			
Production Casing				4-1/2" 11.6#			
Liner Record				SURFACE SURFACE SURFACE			
				Bottom NA			
				650'			
				7300'			

<<< Fold Here >>>

All interpretations are opinions based on inferences from electrical or other measurements and Pioneer Wireline Services, LLC cannot and does not guarantee the accuracy or correctness of any interpretation, and Pioneer Wireline Services, LLC will not be liable or responsible for any loss, costs, damages, or expenses incurred or sustained by anyone resulting from any interpretation made by any of our officers, agents or employees.

Comments

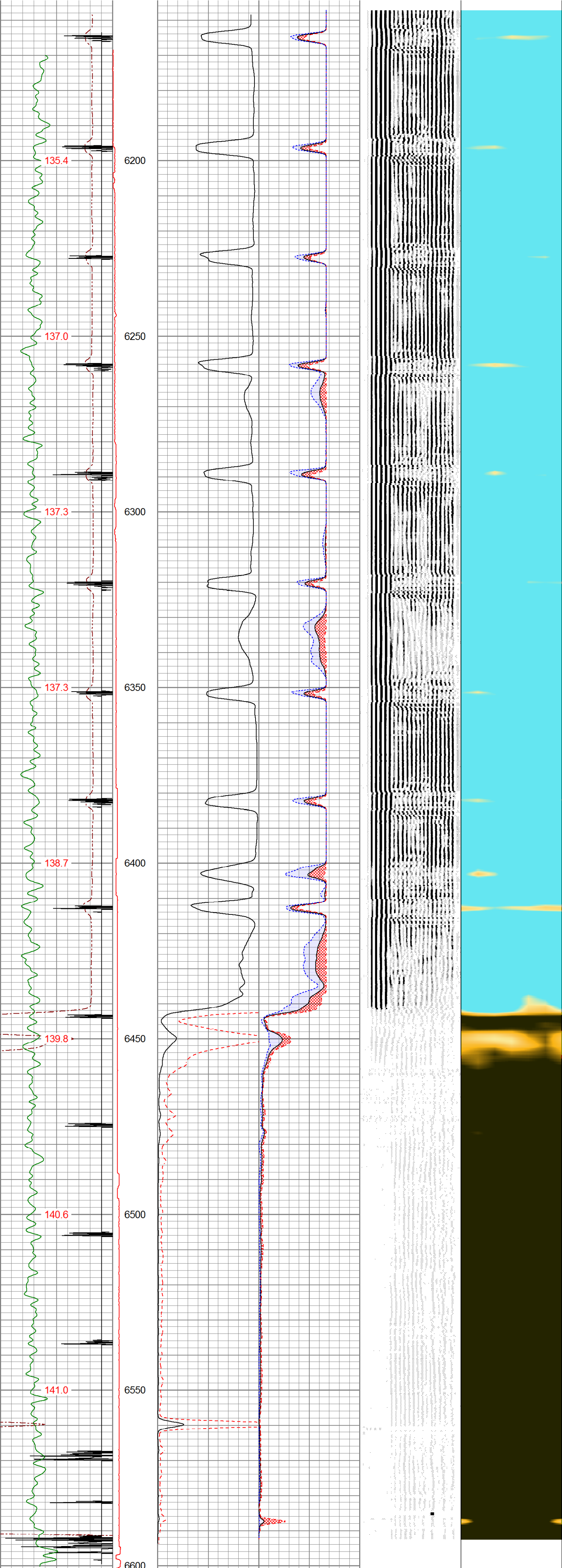
N/A DENOTES NOT AVAILABLE OR NON-APPLICABLE.

THANK YOU FOR USING PIONEER ENERGY SERVICES!

Your Pioneer Energy Services Crew	Tool Data - Services	Serial Number
Engineer: P COOPER Operator: L. CASTILLO Operator: B. MATCHETT Operator:	SCBL	

Database File	chevron_nei c18-21d_0512334396_rcbl_04082024.db
Dataset Pathname	pass3
Presentation Format	pinr_scb
Dataset Creation	Mon Apr 08 14:47:49 2024
Charted by	Depth in Feet scaled 1:240

3Ft Travel Time 275 (usec) -9 Collar Locator	LineTension (lb) 0 500	3' Amplitude (mV) 0 120 3' Amplified Amplitude X 5 (mV) 0 20	Sector Amplitude Average 0 150 Sector Amplitude Maximum 0 150 Sector Amplitude Minimum 0 150	200 VDL (usec) 1200	1 Sector Map 6
Gamma Ray 0 (cps) 150					
TEMP (degF)					



3Ft Travel Time 275 (usec) -9 Collar Locator	LineTension (lb) 0 500	3' Amplitude (mV) 0 120 3' Amplified Amplitude X 5 (mV) 0 20	Sector Amplitude Average 0 150 Sector Amplitude Maximum 0 150 Sector Amplitude Minimum 0 150	200 VDL (usec) 1200	1 Sector Map 6
Gamma Ray 0 (cps) 150					
TEMP (degF)					