

Inspection Photos

Location Name: TEP ROCKY MOUNTAIN LLC BUXTON RWF 23-30 pad

Location ID: 335503



Photo # 1400 From entrance to location



Photo # 1401 Location

Inspection Photos

Location Name: TEP ROCKY MOUNTAIN LLC BUXTON RWF 23-30 pad

Location ID: 335503



Photo # 1402 Location



Photo # 1403 Location

Inspection Photos

Location Name: TEP ROCKY MOUNTAIN LLC BUXTON RWF 23-30 pad

Location ID: 335503

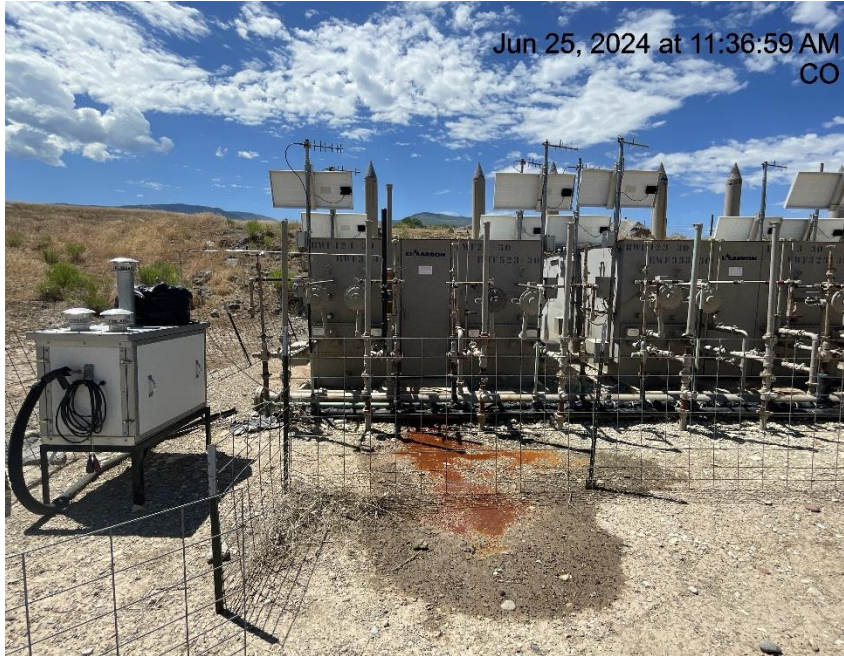


Photo # 1404 Location



Photo # 1405 Location

Inspection Photos

Location Name: TEP ROCKY MOUNTAIN LLC BUXTON RWF 23-30 pad

Location ID: 335503



Photo # 1406 Location



Photo # 1407 Location

Inspection Photos

Location Name: TEP ROCKY MOUNTAIN LLC BUXTON RWF 23-30 pad

Location ID: 335503



Photo # 1408 Location



Photo # 1409 Mechanical Condition - Possible dump line leak & stained soils

Inspection Photos

Location Name: TEP ROCKY MOUNTAIN LLC BUXTON RWF 23-30 pad

Location ID: 335503



Photo # 1410 Mechanical Condition - Possible dump line leak & stained soils



Photo # 1411 Mechanical Condition - Possible dump line leak & stained soils

Inspection Photos

Location Name: TEP ROCKY MOUNTAIN LLC BUXTON RWF 23-30 pad

Location ID: 335503



Photo # 1412 Mechanical Condition - Possible dump line leak & stained soils



Photo # 1413 Mechanical Condition - Possible dump line leak & stained soils

Inspection Photos

Location Name: TEP ROCKY MOUNTAIN LLC BUXTON RWF 23-30 pad

Location ID: 335503



Photo # 1414 Mechanical Condition - Possible dump line leak & stained soils



Photo # 1415 Mechanical Condition - Possible dump line leak & stained soils

Inspection Photos

Location Name: TEP ROCKY MOUNTAIN LLC BUXTON RWF 23-30 pad

Location ID: 335503



Photo # 1416 Hog panels laying on ground/wellhead sign not properly posted & multiple signs are also weathered & cracking



Photo # 1417 Hog panels laying on ground/wellhead sign not properly posted & sign is weathered & cracking

Inspection Photos

Location Name: TEP ROCKY MOUNTAIN LLC BUXTON RWF 23-30 pad

Location ID: 335503



Photo # 1418 Wellhead sign weathered & cracking