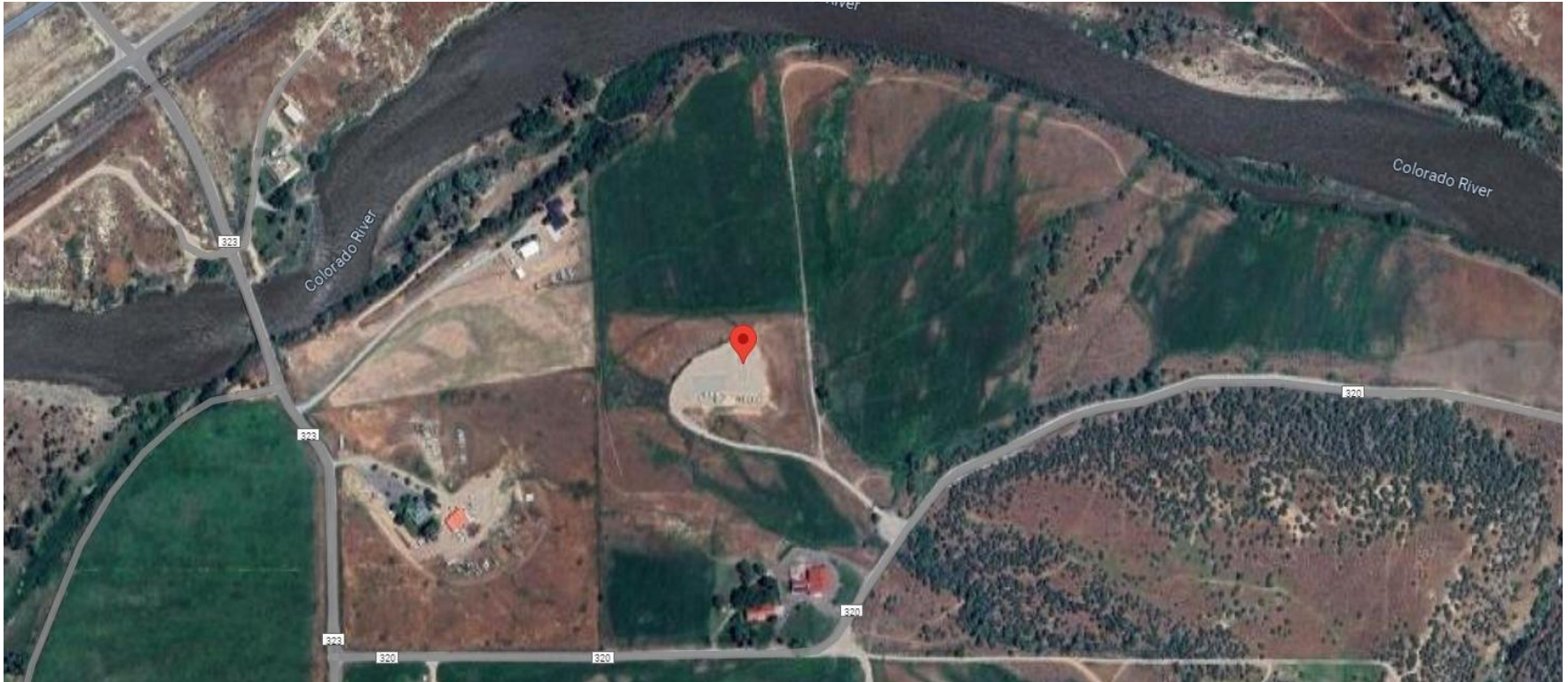


**Storm Water Management and Erosion control**  
**Location Name: TEP ROCKY MOUNTAIN LLC BUXTON RWF 23-30 pad**  
**Location ID: 335503**



**Location Overview: Location is within High Priority/Density/Black Bear Habitat areas & in close proximity to NSO Habitat area & Bald Eagle Roost site. Location is approximately 332 yards from the Colorado River.**

**Section/Township/Range: 30 6S94W**



**COLORADO**  
Energy & Carbon Management  
Commission  
Department of Natural Resources

**Storm water Management and Erosion control**  
**Location Name: TEP ROCKY MOUNTAIN LLC BUXTON RWF 23-30 pad**  
**Location ID: 335503**



**North West corner of location.**



**North East corner of location.**



**South West corner of location.**



**South East corner of location.**