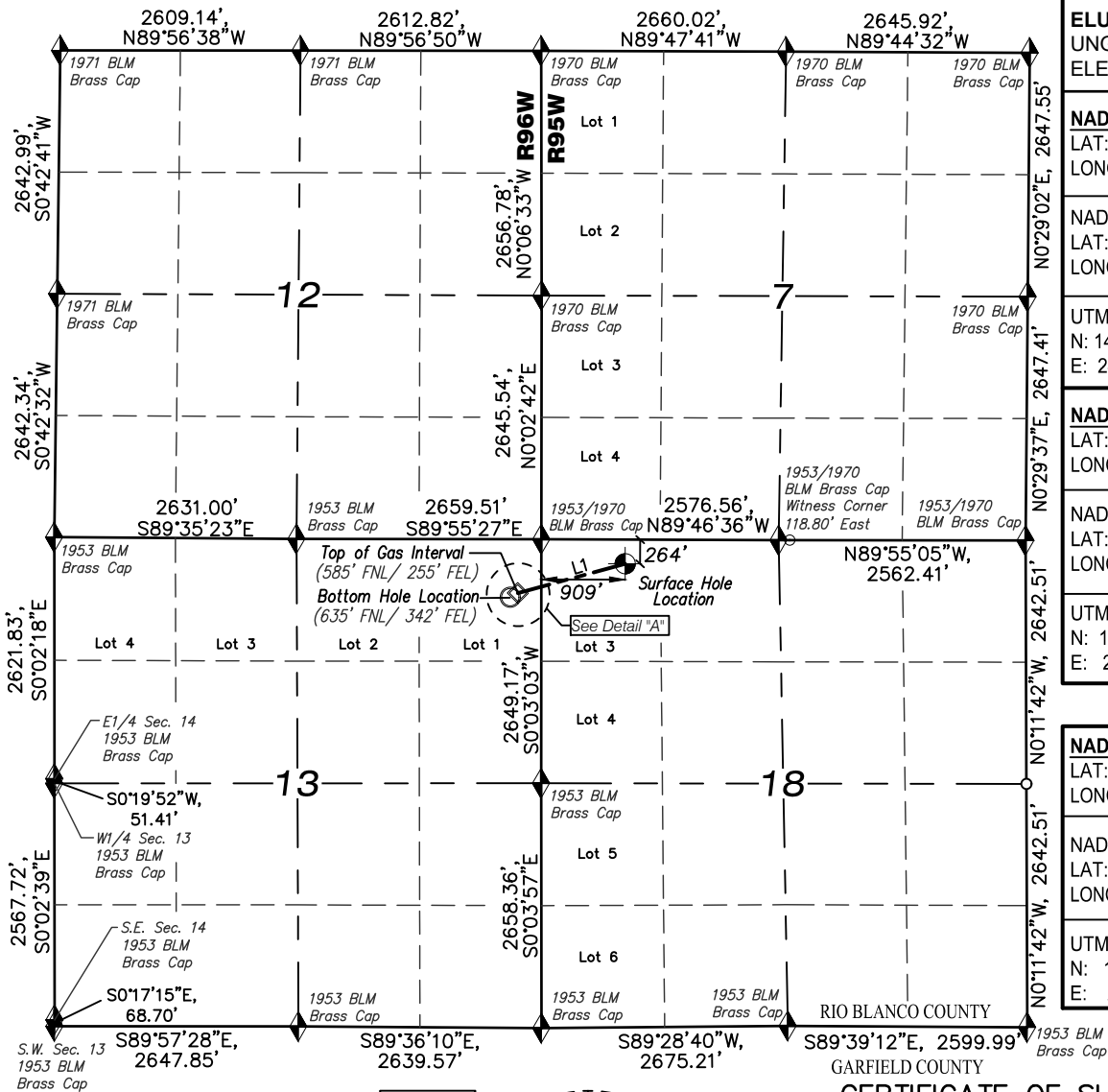


T4S, R96W, 6TH P.M.

T4S, R95W, 6TH P.M.



ELU A18 FED 21A-13 496 WELL
UNGRADED GROUND
ELEVATION = 8032.9'

NAD 83 (SURFACE LOCATION)
LAT: 39° 42' 32.20" N (39.708944 N)
LONG: 108° 06' 15.99" W (108.104441 W)

NAD27 (SURFACE LOCATION)
LAT: 39° 42' 32.29" N (39.708969 N)
LONG: 108° 06' 13.70" W (108.103807 W)

UTM NAD 27 (ZONE 12) US Feet
N: 14433232.62
E: 2455016.78

NAD 83 (BOTTOM HOLE LOCATION)
LAT: 39° 42' 28.56" N (39.707934 N)
LONG: 108° 06' 31.99" W (108.108887 W)

NAD27 (BOTTOM HOLE LOCATION)
LAT: 39° 42' 28.65" N (39.707958 N)
LONG: 108° 06' 29.71" W (108.108252 W)

UTM NAD 27 (ZONE 12) US Feet
N: 14432824.10
E: 2453778.20

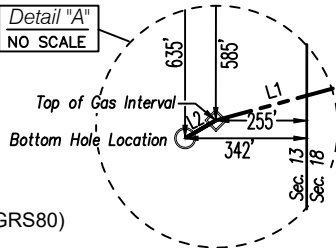
NAD 83 (TOP OF GAS INTERVAL)
LAT: 39° 42' 29.06" N (39.708071 N)
LONG: 108° 06' 30.88" W (108.108579 W)

NAD27 (TOP OF GAS INTERVAL)
LAT: 39° 42' 29.14" N (39.708096 N)
LONG: 108° 06' 28.60" W (108.107944 W)

UTM NAD 27 (ZONE 12) US Feet
N: 14432876.87
E: 2453863.14

LINE TABLE		
LINE	DIRECTION	LENGTH
L1	S74°44'13"W	1207.28'
L2	S60°01'29"W	100.00'

Detail "A"
NO SCALE



NOTES:

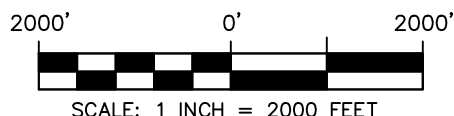
- Survey Datum:
Low Distortion Projection Parameters
Datum NAD83(2011) Epoch 2010.000 (GRS80)
Projection Type = Transverse Mercator
Origin Latitude = 39°40'00" North
Origin Longitude = 108°04'00" West
Scale Reduction = 1.000 377 882 Unitless
Units = U.S. Survey Foot (USSF)
GEOID12a NAVD88 (Basis of Elevation)
- Well footages are measured at right angles to section lines.
- PDOP Reading: 1.4 Operator: B. Taggart (Rule No. 215)
- Improvements: See Location Drawing (Figure #6) for all visible improvements within 2000 ft. of the working pad surface.

LEGEND

- ◆ SECTION CORNER LOCATED
- ⊙ SURFACE HOLE LOCATION
- BOTTOM HOLE LOCATION
- ◇ TOP OF GAS INTERVAL
- COMPUTED



Ted T. Taggart, Registered Land Surveyor
Registration No., 37075 State of Colorado



SCALE: 1 INCH = 2000 FEET



WASATCH SURVEYING ASSOCIATES
906 MAIN STREET, EVANSTON, WY 82930
(307) 789-4545



CAERUS OIL & GAS LLC

ELU A18 FED 21A-13 496 WELL
LOT 3 (NW1/4 NW1/4),
SECTION 18, T4S, R95W, 6TH P.M.
RIO BLANCO COUNTY, COLORADO

WELL LOCATION PLAT

SURVEYED BY: JT/BT	DATE: 5/06/22	
DRAWN BY: SGT	DATE: 6/13/24	PROJECT NO: 20-13-04