







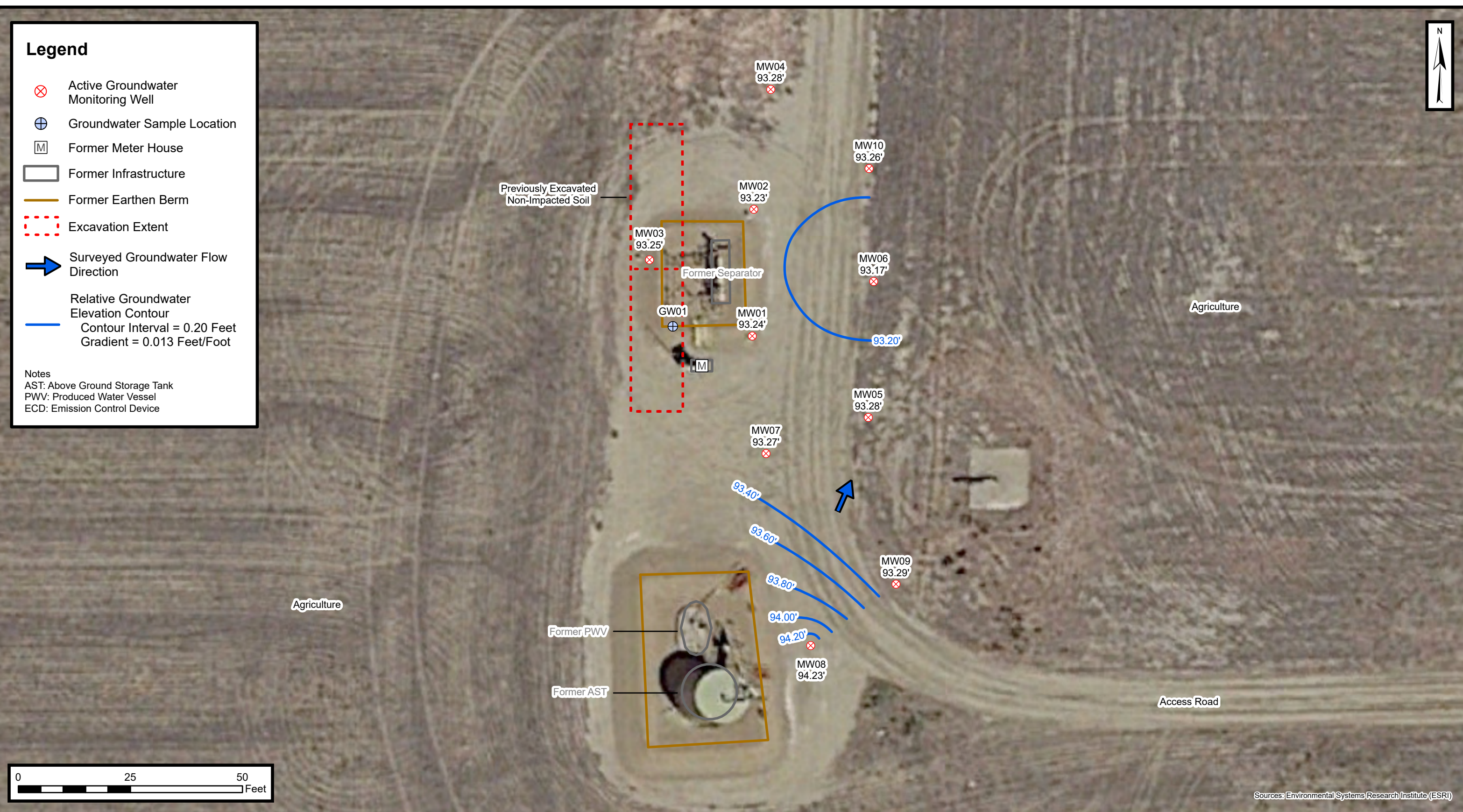


Legend

-  Active Groundwater Monitoring Well
-  Groundwater Sample Location
-  Former Meter House
-  Former Infrastructure
-  Former Earthen Berm
-  Excavation Extent
-  Surveyed Groundwater Flow Direction
-  Relative Groundwater Elevation Contour
- Contour Interval = 0.20 Feet
Gradient = 0.013 Feet/Foot

Notes

AST: Above Ground Storage Tank
PWV: Produced Water Vessel
ECD: Emission Control Device



Groundwater Elevation Contour Map (1/20/2023)

PC Gas Unit 1-26
Kerr-McGee Oil & Gas Onshore, LP
NESW SEC 26-T2N-R68W
Weld County, CO
Project Number: 09A1662038