

Project: Rio Blanco County, CO
Site: ELU A18 495 Pad
Well: ELU A18 FED 25A-12-496
Wellbore: OH
Design: Design #5
Latitude: 39.709036
Longitude: -108.104047
Ground Level: 8029.0
RKB=30' @ 8059.0usft (TBD)

PROJECT DETAILS: Rio Blanco County, CO
Geodetic System: Universal Transverse Mercator (US Survey Feet)
Datum: NAD 1927 - Western US
Ellipsoid: Clarke 1866
Zone: Zone 12N (114 W to 108 W)
System Datum: Mean Sea Level

REFERENCE INFORMATION
Vertical (TVD) Reference: RKB=30' @ 8059.0usft (TBD)
Section (VS) Reference: Slot - 25A-12(0.0N, 0.0E)
Measured Depth Reference: RKB=30' @ 8059.0usft (TBD)
Calculation Method: Minimum Curvature

SECTION DETAILS

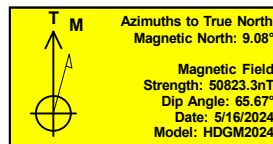
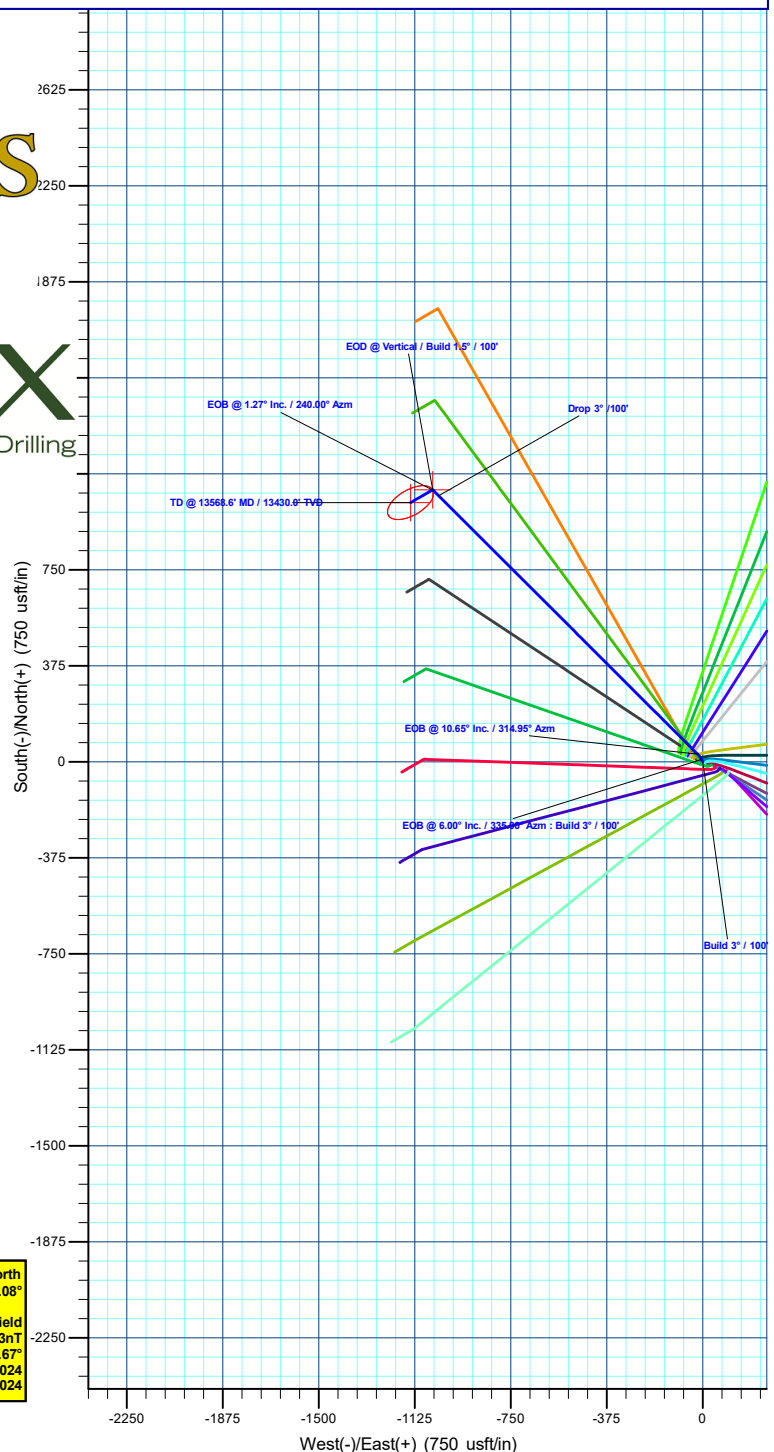
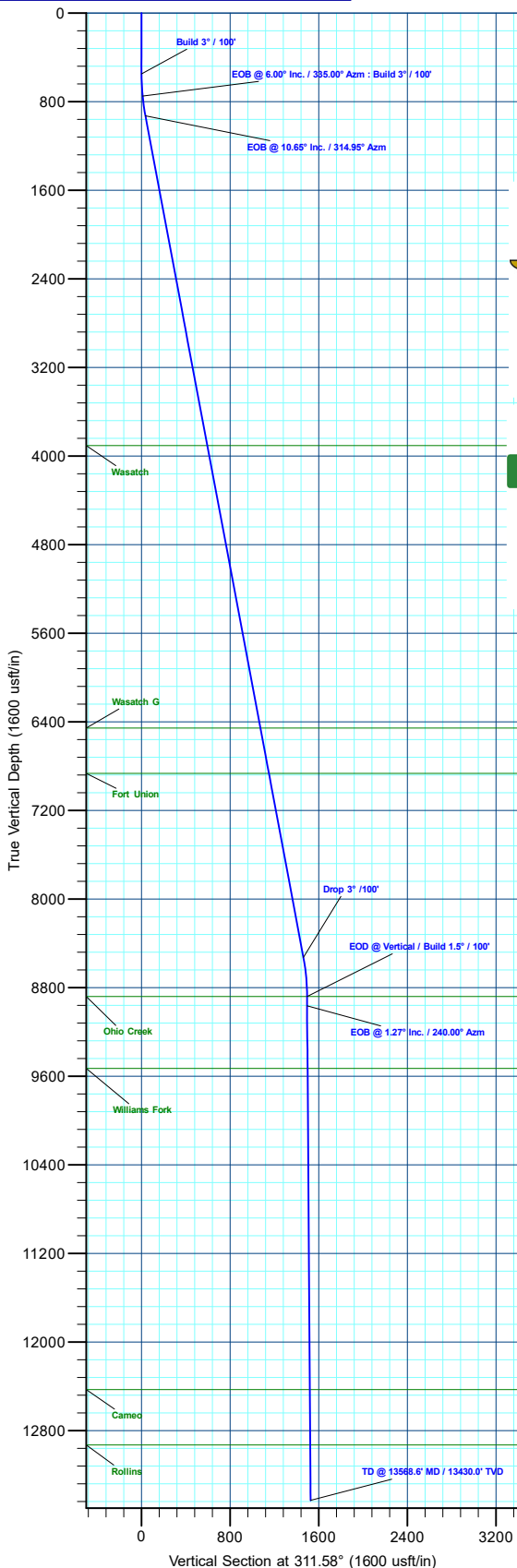
MD	Inc	Azi	TVD	+N/-S	+E/-W	Dleg	TFace	VSect	Annotation
0.0	0.00	0.00	0.0	0.0	0.0	0.00	0.00	0.0	
550.0	0.00	0.00	550.0	0.0	0.0	0.00	0.00	0.0	Build 3° / 100'
750.0	6.00	335.00	749.6	9.5	-4.4	3.00	335.00	9.6	EOB @ 6.00° Inc. / 335.00° Azm : Build 3° / 100'
930.5	10.65	314.95	928.2	29.8	-20.2	3.00	-42.17	34.9	EOB @ 10.65° Inc. / 314.95° Azm
8662.5	10.65	314.95	8527.0	1039.4	-1031.4	0.00	0.00	1461.4	Drop 3° / 100'
9017.5	0.00	0.00	8880.0	1062.7	-1054.7	3.00	180.00	1494.2	EOD @ Vertical / Build 1.5° / 100'
9102.2	1.27	240.00	8964.7	1062.2	-1055.5	1.50	240.00	1494.5	EOB @ 1.27° Inc. / 240.00° Azm
13568.6	1.27	240.00	13430.0	1012.7	-1141.3	0.00	0.00	1525.8	TD @ 13568.6° MD / 13430.0° TVD

DESIGN TARGET DETAILS

Name	TVD	+N/-S	+E/-W	North	East	Latitude	Longitude
25A-12 - OHCR	8880.0	1062.7	-1054.7	14434282.97	2453859.84	39.711953	-108.107795
25A-12 - PBHL	13430.0	1012.7	-1141.3	14434230.20	2453774.90	39.711815	-108.108103

WELL DETAILS: ELU A18 FED 25A-12-496

Ground Level : 8029.0		North		East		Latitude		Longitude	
+N/-S	0.0	+E/-W	0.0	14433254.93	2454948.33	39.709036	-108.104047	25A-12	



Plan: Design #5 (ELU A18 FED 25A-12-496/OH)

Created By: Will Jircik Date: 22:30, June 09 2024



Caerus Oil & Gas

Rio Blanco County, CO

ELU A18 495 Pad

ELU A18 FED 25A-12-496 - Slot 25A-12

OH

Plan: Design #5

KLX Well Planning Report

09 June, 2024



Database:	KLXDirectional-AD	Local Co-ordinate Reference:	Well ELU A18 FED 25A-12-496 - Slot 25A-12
Company:	Caerus Oil & Gas	TVD Reference:	RKB=30' @ 8059.0usft (TBD)
Project:	Rio Blanco County, CO	MD Reference:	RKB=30' @ 8059.0usft (TBD)
Site:	ELU A18 495 Pad	North Reference:	True
Well:	ELU A18 FED 25A-12-496	Survey Calculation Method:	Minimum Curvature
Wellbore:	OH		
Design:	Design #5		

Project	Rio Blanco County, CO		
Map System:	Universal Transverse Mercator (US Survey Feet)	System Datum:	Mean Sea Level
Geo Datum:	NAD 1927 - Western US		
Map Zone:	Zone 12N (114 W to 108 W)		

Site		ELU A18 495 Pad			
Site Position:		Northing:	14,433,285.62 usft	Latitude:	39.709129
From:	Map	Easting:	2,454,854.21 usft	Longitude:	-108.104378
Position Uncertainty:	0.0 usft	Slot Radius:	13-3/16 "	Grid Convergence:	1.85 °

Well		ELU A18 FED 25A-12-496 - Slot 25A-12				
Well Position	+N/-S	-33.7 usft	Northing:	14,433,254.93 usft	Latitude:	39.709037
	+E/-W	93.1 usft	Easting:	2,454,948.33 usft	Longitude:	-108.104048
Position Uncertainty		0.0 usft	Wellhead Elevation:		Ground Level:	8,029.0 usft

Wellbore	OH				
Magnetics	Model Name	Sample Date	Declination (°)	Dip Angle (°)	Field Strength (nT)
	HDGM2024	5/16/2024	9.08	65.67	50,823.30000000

Design	Design #5			
Audit Notes:				
Version:	Phase:	PLAN	Tie On Depth:	0.0
Vertical Section:	Depth From (TVD) (usft)	+N/-S (usft)	+E/-W (usft)	Direction (°)
	0.0	0.0	0.0	311.58

Plan Sections										
Measured Depth (usft)	Inclination (°)	Azimuth (°)	Vertical Depth (usft)	+N/-S (usft)	+E/-W (usft)	Dogleg Rate (°/100usft)	Build Rate (°/100usft)	Turn Rate (°/100usft)	TFO (°)	Target
0.0	0.00	0.00	0.0	0.0	0.0	0.00	0.00	0.00	0.00	
550.0	0.00	0.00	550.0	0.0	0.0	0.00	0.00	0.00	0.00	
750.0	6.00	335.00	749.6	9.5	-4.4	3.00	3.00	0.00	335.00	
930.5	10.65	314.95	928.2	29.8	-20.2	3.00	2.58	-11.11	-42.17	
8,662.5	10.65	314.95	8,527.0	1,039.4	-1,031.4	0.00	0.00	0.00	0.00	
9,017.5	0.00	0.00	8,880.0	1,062.7	-1,054.7	3.00	-3.00	0.00	180.00	25A-12 - OHCR
9,102.2	1.27	240.00	8,964.7	1,062.2	-1,055.5	1.50	1.50	-141.63	240.00	
13,568.6	1.27	240.00	13,430.0	1,012.7	-1,141.3	0.00	0.00	0.00	0.00	25A-12 - PBHL

Database:	KLXDirectional-AD	Local Co-ordinate Reference:	Well ELU A18 FED 25A-12-496 - Slot 25A-12
Company:	Caerus Oil & Gas	TVD Reference:	RKB=30' @ 8059.0usft (TBD)
Project:	Rio Blanco County, CO	MD Reference:	RKB=30' @ 8059.0usft (TBD)
Site:	ELU A18 495 Pad	North Reference:	True
Well:	ELU A18 FED 25A-12-496	Survey Calculation Method:	Minimum Curvature
Wellbore:	OH		
Design:	Design #5		

Planned Survey									
Measured Depth (usft)	Inclination (°)	Azimuth (°)	Vertical Depth (usft)	+N/-S (usft)	+E/-W (usft)	Vertical Section (usft)	Dogleg Rate (°/100usft)	Build Rate (°/100usft)	Turn Rate (°/100usft)
0.0	0.00	0.00	0.0	0.0	0.0	0.0	0.00	0.00	0.00
100.0	0.00	0.00	100.0	0.0	0.0	0.0	0.00	0.00	0.00
200.0	0.00	0.00	200.0	0.0	0.0	0.0	0.00	0.00	0.00
300.0	0.00	0.00	300.0	0.0	0.0	0.0	0.00	0.00	0.00
400.0	0.00	0.00	400.0	0.0	0.0	0.0	0.00	0.00	0.00
500.0	0.00	0.00	500.0	0.0	0.0	0.0	0.00	0.00	0.00
Build 3° / 100'									
550.0	0.00	0.00	550.0	0.0	0.0	0.0	0.00	0.00	0.00
600.0	1.50	335.00	600.0	0.6	-0.3	0.6	3.00	3.00	0.00
700.0	4.50	335.00	699.8	5.3	-2.5	5.4	3.00	3.00	0.00
EOB @ 6.00° Inc. / 335.00° Azm : Build 3° / 100'									
750.0	6.00	335.00	749.6	9.5	-4.4	9.6	3.00	3.00	0.00
800.0	7.18	326.92	799.3	14.5	-7.2	15.0	3.00	2.36	-16.16
900.0	9.81	316.99	898.2	25.9	-16.5	29.5	3.00	2.63	-9.93
EOB @ 10.65° Inc. / 314.95° Azm									
930.5	10.65	314.95	928.2	29.8	-20.2	34.9	3.00	2.76	-6.69
1,000.0	10.65	314.95	996.5	38.9	-29.3	47.7	0.00	0.00	0.00
1,100.0	10.65	314.95	1,094.8	52.0	-42.4	66.2	0.00	0.00	0.00
1,200.0	10.65	314.95	1,193.1	65.0	-55.5	84.6	0.00	0.00	0.00
1,300.0	10.65	314.95	1,291.4	78.1	-68.5	103.1	0.00	0.00	0.00
1,400.0	10.65	314.95	1,389.6	91.1	-81.6	121.5	0.00	0.00	0.00
1,500.0	10.65	314.95	1,487.9	104.2	-94.7	140.0	0.00	0.00	0.00
1,600.0	10.65	314.95	1,586.2	117.3	-107.8	158.4	0.00	0.00	0.00
1,700.0	10.65	314.95	1,684.5	130.3	-120.9	176.9	0.00	0.00	0.00
1,800.0	10.65	314.95	1,782.7	143.4	-133.9	195.3	0.00	0.00	0.00
1,900.0	10.65	314.95	1,881.0	156.4	-147.0	213.8	0.00	0.00	0.00
2,000.0	10.65	314.95	1,979.3	169.5	-160.1	232.2	0.00	0.00	0.00
2,100.0	10.65	314.95	2,077.6	182.5	-173.2	250.7	0.00	0.00	0.00
2,200.0	10.65	314.95	2,175.9	195.6	-186.3	269.1	0.00	0.00	0.00
2,300.0	10.65	314.95	2,274.1	208.7	-199.3	287.6	0.00	0.00	0.00
2,400.0	10.65	314.95	2,372.4	221.7	-212.4	306.0	0.00	0.00	0.00
2,500.0	10.65	314.95	2,470.7	234.8	-225.5	324.5	0.00	0.00	0.00
2,600.0	10.65	314.95	2,569.0	247.8	-238.6	342.9	0.00	0.00	0.00
2,700.0	10.65	314.95	2,667.2	260.9	-251.6	361.4	0.00	0.00	0.00
2,800.0	10.65	314.95	2,765.5	273.9	-264.7	379.8	0.00	0.00	0.00
2,900.0	10.65	314.95	2,863.8	287.0	-277.8	398.3	0.00	0.00	0.00
3,000.0	10.65	314.95	2,962.1	300.1	-290.9	416.7	0.00	0.00	0.00
3,100.0	10.65	314.95	3,060.3	313.1	-304.0	435.2	0.00	0.00	0.00
3,200.0	10.65	314.95	3,158.6	326.2	-317.0	453.6	0.00	0.00	0.00
3,300.0	10.65	314.95	3,256.9	339.2	-330.1	472.1	0.00	0.00	0.00
3,400.0	10.65	314.95	3,355.2	352.3	-343.2	490.5	0.00	0.00	0.00
3,500.0	10.65	314.95	3,453.5	365.3	-356.3	509.0	0.00	0.00	0.00
3,600.0	10.65	314.95	3,551.7	378.4	-369.3	527.4	0.00	0.00	0.00
3,700.0	10.65	314.95	3,650.0	391.5	-382.4	545.9	0.00	0.00	0.00
3,800.0	10.65	314.95	3,748.3	404.5	-395.5	564.3	0.00	0.00	0.00
3,900.0	10.65	314.95	3,846.6	417.6	-408.6	582.8	0.00	0.00	0.00
Wasatch									
3,961.5	10.65	314.95	3,907.0	425.6	-416.6	594.1	0.00	0.00	0.00
4,000.0	10.65	314.95	3,944.8	430.6	-421.7	601.2	0.00	0.00	0.00
4,100.0	10.65	314.95	4,043.1	443.7	-434.7	619.7	0.00	0.00	0.00
4,200.0	10.65	314.95	4,141.4	456.7	-447.8	638.1	0.00	0.00	0.00
4,300.0	10.65	314.95	4,239.7	469.8	-460.9	656.6	0.00	0.00	0.00
4,400.0	10.65	314.95	4,338.0	482.9	-474.0	675.0	0.00	0.00	0.00
4,500.0	10.65	314.95	4,436.2	495.9	-487.0	693.4	0.00	0.00	0.00

Database:	KLXDirectional-AD	Local Co-ordinate Reference:	Well ELU A18 FED 25A-12-496 - Slot 25A-12
Company:	Caerus Oil & Gas	TVD Reference:	RKB=30' @ 8059.0usft (TBD)
Project:	Rio Blanco County, CO	MD Reference:	RKB=30' @ 8059.0usft (TBD)
Site:	ELU A18 495 Pad	North Reference:	True
Well:	ELU A18 FED 25A-12-496	Survey Calculation Method:	Minimum Curvature
Wellbore:	OH		
Design:	Design #5		

Planned Survey									
Measured Depth (usft)	Inclination (°)	Azimuth (°)	Vertical Depth (usft)	+N/-S (usft)	+E/-W (usft)	Vertical Section (usft)	Dogleg Rate (°/100usft)	Build Rate (°/100usft)	Turn Rate (°/100usft)
4,600.0	10.65	314.95	4,534.5	509.0	-500.1	711.9	0.00	0.00	0.00
4,700.0	10.65	314.95	4,632.8	522.0	-513.2	730.3	0.00	0.00	0.00
4,800.0	10.65	314.95	4,731.1	535.1	-526.3	748.8	0.00	0.00	0.00
4,900.0	10.65	314.95	4,829.3	548.1	-539.4	767.2	0.00	0.00	0.00
5,000.0	10.65	314.95	4,927.6	561.2	-552.4	785.7	0.00	0.00	0.00
5,100.0	10.65	314.95	5,025.9	574.3	-565.5	804.1	0.00	0.00	0.00
5,200.0	10.65	314.95	5,124.2	587.3	-578.6	822.6	0.00	0.00	0.00
5,300.0	10.65	314.95	5,222.5	600.4	-591.7	841.0	0.00	0.00	0.00
5,400.0	10.65	314.95	5,320.7	613.4	-604.8	859.5	0.00	0.00	0.00
5,500.0	10.65	314.95	5,419.0	626.5	-617.8	877.9	0.00	0.00	0.00
5,600.0	10.65	314.95	5,517.3	639.5	-630.9	896.4	0.00	0.00	0.00
5,700.0	10.65	314.95	5,615.6	652.6	-644.0	914.8	0.00	0.00	0.00
5,800.0	10.65	314.95	5,713.8	665.7	-657.1	933.3	0.00	0.00	0.00
5,900.0	10.65	314.95	5,812.1	678.7	-670.1	951.7	0.00	0.00	0.00
6,000.0	10.65	314.95	5,910.4	691.8	-683.2	970.2	0.00	0.00	0.00
6,100.0	10.65	314.95	6,008.7	704.8	-696.3	988.6	0.00	0.00	0.00
6,200.0	10.65	314.95	6,107.0	717.9	-709.4	1,007.1	0.00	0.00	0.00
6,300.0	10.65	314.95	6,205.2	730.9	-722.5	1,025.5	0.00	0.00	0.00
6,400.0	10.65	314.95	6,303.5	744.0	-735.5	1,044.0	0.00	0.00	0.00
6,500.0	10.65	314.95	6,401.8	757.1	-748.6	1,062.4	0.00	0.00	0.00
Wasatch G									
6,556.2	10.65	314.95	6,457.0	764.4	-756.0	1,072.8	0.00	0.00	0.00
6,600.0	10.65	314.95	6,500.1	770.1	-761.7	1,080.9	0.00	0.00	0.00
6,700.0	10.65	314.95	6,598.3	783.2	-774.8	1,099.3	0.00	0.00	0.00
6,800.0	10.65	314.95	6,696.6	796.2	-787.8	1,117.8	0.00	0.00	0.00
6,900.0	10.65	314.95	6,794.9	809.3	-800.9	1,136.2	0.00	0.00	0.00
Fort Union									
6,973.4	10.65	314.95	6,867.0	818.9	-810.5	1,149.7	0.00	0.00	0.00
7,000.0	10.65	314.95	6,893.2	822.3	-814.0	1,154.7	0.00	0.00	0.00
7,100.0	10.65	314.95	6,991.4	835.4	-827.1	1,173.1	0.00	0.00	0.00
7,200.0	10.65	314.95	7,089.7	848.5	-840.2	1,191.6	0.00	0.00	0.00
7,300.0	10.65	314.95	7,188.0	861.5	-853.2	1,210.0	0.00	0.00	0.00
7,400.0	10.65	314.95	7,286.3	874.6	-866.3	1,228.5	0.00	0.00	0.00
7,500.0	10.65	314.95	7,384.6	887.6	-879.4	1,246.9	0.00	0.00	0.00
7,600.0	10.65	314.95	7,482.8	900.7	-892.5	1,265.4	0.00	0.00	0.00
7,700.0	10.65	314.95	7,581.1	913.7	-905.5	1,283.8	0.00	0.00	0.00
7,800.0	10.65	314.95	7,679.4	926.8	-918.6	1,302.2	0.00	0.00	0.00
7,900.0	10.65	314.95	7,777.7	939.9	-931.7	1,320.7	0.00	0.00	0.00
8,000.0	10.65	314.95	7,875.9	952.9	-944.8	1,339.1	0.00	0.00	0.00
8,100.0	10.65	314.95	7,974.2	966.0	-957.9	1,357.6	0.00	0.00	0.00
8,200.0	10.65	314.95	8,072.5	979.0	-970.9	1,376.0	0.00	0.00	0.00
8,300.0	10.65	314.95	8,170.8	992.1	-984.0	1,394.5	0.00	0.00	0.00
8,400.0	10.65	314.95	8,269.1	1,005.1	-997.1	1,412.9	0.00	0.00	0.00
8,500.0	10.65	314.95	8,367.3	1,018.2	-1,010.2	1,431.4	0.00	0.00	0.00
8,600.0	10.65	314.95	8,465.6	1,031.3	-1,023.3	1,449.8	0.00	0.00	0.00
Drop 3° /100'									
8,662.5	10.65	314.95	8,527.0	1,039.4	-1,031.4	1,461.4	0.00	0.00	0.00
8,700.0	9.53	314.95	8,564.0	1,044.1	-1,036.1	1,467.9	3.00	-3.00	0.00
8,800.0	6.53	314.95	8,663.0	1,053.9	-1,046.0	1,481.9	3.00	-3.00	0.00
8,900.0	3.53	314.95	8,762.6	1,060.1	-1,052.2	1,490.6	3.00	-3.00	0.00
9,000.0	0.53	314.95	8,862.5	1,062.6	-1,054.7	1,494.1	3.00	-3.00	0.00
EOD @ Vertical / Build 1.5° / 100' - Ohio Creek									
9,017.5	0.00	0.00	8,880.0	1,062.7	-1,054.7	1,494.2	3.00	-3.00	0.00

Database:	KLXDirectional-AD	Local Co-ordinate Reference:	Well ELU A18 FED 25A-12-496 - Slot 25A-12
Company:	Caerus Oil & Gas	TVD Reference:	RKB=30' @ 8059.0usft (TBD)
Project:	Rio Blanco County, CO	MD Reference:	RKB=30' @ 8059.0usft (TBD)
Site:	ELU A18 495 Pad	North Reference:	True
Well:	ELU A18 FED 25A-12-496	Survey Calculation Method:	Minimum Curvature
Wellbore:	OH		
Design:	Design #5		

Planned Survey										
Measured Depth (usft)	Inclination (°)	Azimuth (°)	Vertical Depth (usft)	+N/-S (usft)	+E/-W (usft)	Vertical Section (usft)	Dogleg Rate (°/100usft)	Build Rate (°/100usft)	Turn Rate (°/100usft)	
EOB @ 1.27° Inc. / 240.00° Azm										
9,102.2	1.27	240.00	8,964.7	1,062.2	-1,055.5	1,494.5	1.50	1.50	0.00	
9,200.0	1.27	240.00	9,062.5	1,061.1	-1,057.4	1,495.2	0.00	0.00	0.00	
9,300.0	1.27	240.00	9,162.4	1,060.0	-1,059.3	1,495.9	0.00	0.00	0.00	
9,400.0	1.27	240.00	9,262.4	1,058.9	-1,061.2	1,496.6	0.00	0.00	0.00	
9,500.0	1.27	240.00	9,362.4	1,057.8	-1,063.2	1,497.3	0.00	0.00	0.00	
9,600.0	1.27	240.00	9,462.4	1,056.7	-1,065.1	1,498.0	0.00	0.00	0.00	
Williams Fork										
9,667.7	1.27	240.00	9,530.0	1,055.9	-1,066.4	1,498.5	0.00	0.00	0.00	
9,700.0	1.27	240.00	9,562.3	1,055.6	-1,067.0	1,498.7	0.00	0.00	0.00	
9,800.0	1.27	240.00	9,662.3	1,054.5	-1,068.9	1,499.4	0.00	0.00	0.00	
9,900.0	1.27	240.00	9,762.3	1,053.4	-1,070.8	1,500.1	0.00	0.00	0.00	
10,000.0	1.27	240.00	9,862.3	1,052.2	-1,072.8	1,500.8	0.00	0.00	0.00	
10,100.0	1.27	240.00	9,962.2	1,051.1	-1,074.7	1,501.5	0.00	0.00	0.00	
10,200.0	1.27	240.00	10,062.2	1,050.0	-1,076.6	1,502.2	0.00	0.00	0.00	
10,300.0	1.27	240.00	10,162.2	1,048.9	-1,078.5	1,502.9	0.00	0.00	0.00	
10,400.0	1.27	240.00	10,262.2	1,047.8	-1,080.4	1,503.6	0.00	0.00	0.00	
10,500.0	1.27	240.00	10,362.1	1,046.7	-1,082.4	1,504.3	0.00	0.00	0.00	
10,600.0	1.27	240.00	10,462.1	1,045.6	-1,084.3	1,505.0	0.00	0.00	0.00	
10,700.0	1.27	240.00	10,562.1	1,044.5	-1,086.2	1,505.7	0.00	0.00	0.00	
10,800.0	1.27	240.00	10,662.1	1,043.4	-1,088.1	1,506.4	0.00	0.00	0.00	
10,900.0	1.27	240.00	10,762.0	1,042.3	-1,090.1	1,507.1	0.00	0.00	0.00	
11,000.0	1.27	240.00	10,862.0	1,041.2	-1,092.0	1,507.8	0.00	0.00	0.00	
11,100.0	1.27	240.00	10,962.0	1,040.0	-1,093.9	1,508.5	0.00	0.00	0.00	
11,200.0	1.27	240.00	11,062.0	1,038.9	-1,095.8	1,509.2	0.00	0.00	0.00	
11,300.0	1.27	240.00	11,161.9	1,037.8	-1,097.7	1,509.9	0.00	0.00	0.00	
11,400.0	1.27	240.00	11,261.9	1,036.7	-1,099.7	1,510.6	0.00	0.00	0.00	
11,500.0	1.27	240.00	11,361.9	1,035.6	-1,101.6	1,511.3	0.00	0.00	0.00	
11,600.0	1.27	240.00	11,461.9	1,034.5	-1,103.5	1,512.0	0.00	0.00	0.00	
11,700.0	1.27	240.00	11,561.8	1,033.4	-1,105.4	1,512.7	0.00	0.00	0.00	
11,800.0	1.27	240.00	11,661.8	1,032.3	-1,107.3	1,513.4	0.00	0.00	0.00	
11,900.0	1.27	240.00	11,761.8	1,031.2	-1,109.3	1,514.1	0.00	0.00	0.00	
12,000.0	1.27	240.00	11,861.8	1,030.1	-1,111.2	1,514.8	0.00	0.00	0.00	
12,100.0	1.27	240.00	11,961.8	1,029.0	-1,113.1	1,515.5	0.00	0.00	0.00	
12,200.0	1.27	240.00	12,061.7	1,027.8	-1,115.0	1,516.2	0.00	0.00	0.00	
12,300.0	1.27	240.00	12,161.7	1,026.7	-1,116.9	1,516.9	0.00	0.00	0.00	
12,400.0	1.27	240.00	12,261.7	1,025.6	-1,118.9	1,517.6	0.00	0.00	0.00	
12,500.0	1.27	240.00	12,361.7	1,024.5	-1,120.8	1,518.3	0.00	0.00	0.00	
Cameo										
12,568.4	1.27	240.00	12,430.0	1,023.8	-1,122.1	1,518.8	0.00	0.00	0.00	
12,600.0	1.27	240.00	12,461.6	1,023.4	-1,122.7	1,519.0	0.00	0.00	0.00	
12,700.0	1.27	240.00	12,561.6	1,022.3	-1,124.6	1,519.7	0.00	0.00	0.00	
12,800.0	1.27	240.00	12,661.6	1,021.2	-1,126.5	1,520.4	0.00	0.00	0.00	
12,900.0	1.27	240.00	12,761.6	1,020.1	-1,128.5	1,521.1	0.00	0.00	0.00	
13,000.0	1.27	240.00	12,861.5	1,019.0	-1,130.4	1,521.8	0.00	0.00	0.00	
Rollins										
13,068.5	1.27	240.00	12,930.0	1,018.2	-1,131.7	1,522.3	0.00	0.00	0.00	
13,100.0	1.27	240.00	12,961.5	1,017.9	-1,132.3	1,522.5	0.00	0.00	0.00	
13,200.0	1.27	240.00	13,061.5	1,016.8	-1,134.2	1,523.2	0.00	0.00	0.00	
13,300.0	1.27	240.00	13,161.5	1,015.6	-1,136.2	1,523.9	0.00	0.00	0.00	
13,400.0	1.27	240.00	13,261.4	1,014.5	-1,138.1	1,524.6	0.00	0.00	0.00	
13,500.0	1.27	240.00	13,361.4	1,013.4	-1,140.0	1,525.3	0.00	0.00	0.00	
TD @ 13568.6' MD / 13430.0' TVD										

Database:	KLXDirectional-AD	Local Co-ordinate Reference:	Well ELU A18 FED 25A-12-496 - Slot 25A-12
Company:	Caerus Oil & Gas	TVD Reference:	RKB=30' @ 8059.0usft (TBD)
Project:	Rio Blanco County, CO	MD Reference:	RKB=30' @ 8059.0usft (TBD)
Site:	ELU A18 495 Pad	North Reference:	True
Well:	ELU A18 FED 25A-12-496	Survey Calculation Method:	Minimum Curvature
Wellbore:	OH		
Design:	Design #5		

Planned Survey									
Measured Depth (usft)	Inclination (°)	Azimuth (°)	Vertical Depth (usft)	+N/-S (usft)	+E/-W (usft)	Vertical Section (usft)	Dogleg Rate (°/100usft)	Build Rate (°/100usft)	Turn Rate (°/100usft)
13,568.6	1.27	240.00	13,430.0	1,012.7	-1,141.3	1,525.8	0.00	0.00	0.00

Design Targets									
Target Name - hit/miss target - Shape	Dip Angle (°)	Dip Dir. (°)	TVD (usft)	+N/-S (usft)	+E/-W (usft)	Northing (usft)	Easting (usft)	Latitude	Longitude
25A-12 - OHCR - plan hits target center - Point	0.00	0.00	8,880.0	1,062.7	-1,054.7	14,434,282.97	2,453,859.85	39.711953	-108.107795
25A-12 - PBHL - plan hits target center - Ellipse (radii L100.0 W50.0 on 240.00 azi)	0.00	0.00	13,430.0	1,012.7	-1,141.3	14,434,230.20	2,453,774.90	39.711816	-108.108103

Formations						
Measured Depth (usft)	Vertical Depth (usft)	Name	Lithology	Dip (°)	Dip Direction (°)	
3,961.5	3,907.0	Wasatch				
6,556.2	6,457.0	Wasatch G				
6,973.4	6,867.0	Fort Union				
9,017.5	8,880.0	Ohio Creek				
9,667.7	9,530.0	Williams Fork				
12,568.4	12,430.0	Cameo				
13,068.5	12,930.0	Rollins				

Plan Annotations				
Measured Depth (usft)	Vertical Depth (usft)	+N/-S (usft)	+E/-W (usft)	Comment
550.0	550.0	0.0	0.0	Build 3° / 100'
750.0	749.6	9.5	-4.4	EOB @ 6.00° Inc. / 335.00° Azm : Build 3° / 100'
930.5	928.2	29.8	-20.2	EOB @ 10.65° Inc. / 314.95° Azm
8,662.5	8,527.0	1,039.4	-1,031.4	Drop 3° /100'
9,017.5	8,880.0	1,062.7	-1,054.7	EOD @ Vertical / Build 1.5° / 100'
9,102.2	8,964.7	1,062.2	-1,055.5	EOB @ 1.27° Inc. / 240.00° Azm
13,568.6	13,430.0	1,012.7	-1,141.3	TD @ 13568.6' MD / 13430.0' TVD