

POINT	NAD 83	NAD 27
SURFACE HOLE LOCATION	N: 1476296.95	N: 476296.51
	E: 3350297.64	E: 2350446.85
	LAT: N 40.6339880	LAT: N40.6340043
	LONG: W 104.2378466	LONG: W104.2373424
LANDING POINT LOCATION	N: 1476149.52	N: 476149.02
	E: 3354150.28	E: 2354299.60
	LAT: N40.6334321	LAT: N40.6334481
	LONG: W104.2239748	LONG: W104.2234705
BOTTOM OF PRODUCTION ZONE	N: 1483486.40	N: 483485.76
	E: 3354151.57	E: 2354300.82
	LAT: N40.6535685	LAT: N40.6535845
	LONG: W104.2235896	LONG: W104.2230855
BOTTOM HOLE LOCATION	N: 1483576.41	N: 483575.77
	E: 3354151.59	E: 2354300.83
	LAT: N40.6538156	LAT: N40.6538315
	LONG: W104.2235849	LONG: W104.2230808

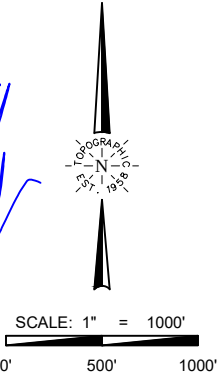
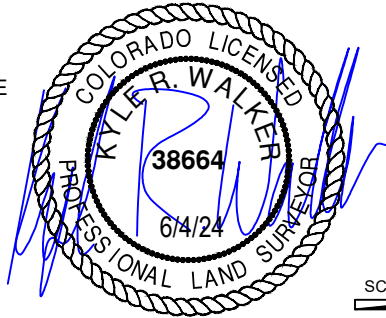
LEGEND

- SECTION LINE
- QUARTER SECTION LINE
- SIXTEENTH SECTION LINE
- POINT OF INTERSECTION
- MONUMENT FOUND
- CALCULATED CORNER



**SURVEYOR'S STATEMENT**  
THE UNDERSIGNED HEREBY STATES THAT THE WELL LOCATION SHOWN HEREON WAS STAKED ON THE GROUND BASED ON EXISTING MONUMENTATION AND/OR PHYSICAL EVIDENCE FOUND IN THE FIELD AND IS CORRECT TO THE BEST OF MY KNOWLEDGE, INFORMATION AND BELIEF.

- NOTES**
- HORIZONTAL (NAD 83) AND VERTICAL (NAVD 88) DATUM IS BASED ON THE TRIMBLE VRS NETWORK. THE LINEAL UNITS OF MEASUREMENT ARE U.S. SURVEY FEET.
  - ALL DIRECTIONS, DISTANCES, AND DIMENSIONS SHOWN HEREON ARE BASED ON COORDINATES FROM THE "COLORADO COORDINATE SYSTEM OF 1983 NORTH ZONE" (TITLE 38, ARTICLE 52 C.R.S.).
  - ALL SECTION LINE DIMENSIONS SHOWN HEREON ARE BASED ON FIELD MEASUREMENTS OF EXISTING MONUMENTS AND/OR PHYSICAL EVIDENCE FOUND IN THE FIELD UNLESS OTHERWISE INDICATED.
  - PHYSICAL FEATURES SHOWN HEREON ARE FOR GRAPHICAL REPRESENTATION ONLY.
  - SEE FORM 2A FOR VISIBLE IMPROVEMENTS WITHIN 500' OF WELLHEAD.
  - DISTANCES TO NEAREST SECTION LINES ARE MEASURED PERPENDICULARLY.
  - THIS IS NOT A LAND SURVEY NOR LAND SURVEY PLAT.
- PDOP READING: 1.3 INSTRUMENT OPERATOR: Joe Phillips



VERDAD RESOURCES  
GAFFNEY 2920-07H

FIELD	08/23/2022	DRAFT	KRW
REV 2	06/04/2024	CHECK	ZAK
SHEET :	1 OF 1	JOB:	115766

**WELL LOCATION MAP**  
S.H.L. SW/4 NW/4, SECTION 29 T8N R61W 6TH PM  
LP SE/4 NE/4, SECTION 29 T8N R61W 6TH PM  
BPZ NE/4 NE/4, SECTION 20 T8N R61W 6TH PM  
BHL NE/4 NE/4, SECTION 20 T8N R61W 6TH PM  
WELD COUNTY, COLORADO