



# Wellbore Schematic Input Report

Well Name: STATE BOOTH 36-02

Original Hole [Land]		Well Header													
MD (ftKB)	Vertical schematic (actual)	Surface UWI 0512312664		Asset Team		Production Tree Location Land									
		Original RKB Elevation (ft) 4,816.00		Original KB to Ground (ft) 11.00		Original Spud Date 10/29/1985		Abandon Date							
		Range				Well Sub-Status PR		High Pressure N							
		Directions To Well						Latitude (°) 40.531841		Longitude (°) -104.613433					
		Comment NO CBL ON FILE IN GREELEY OR W/ STATE FOR D&C OPERATIONS IN 1985. CBL ON FILE IS FROM REMEDIAL CEMENT JOB IN 2000. ESTIMATED TOC FROM THIS LOG. INCOMPLETE FIELD REPORTS ON D&C, REFRAC AND REMEDIAL CEMENT JOB IN WELL FILE.													
		Congressional Location													
		Quarter 3 SE		Quarter 4 NW		Section 36		Township 7		Township N/S Dir N		Range 65		Range E/W Dir W	
		Rig Operator													
		Rig/Unit Supervisor													
		Daily Cost Summary													
		Sum of Field Est (Cost) 0													
		Wellbore Plug Back Total Depths													
		Date		PBTD (ftKB)		Method		Com							
		2/18/2000		7,190		TAG		MOST RECENT TAG							
		Wellbore Sections													
Section Des				Hole Size (in)		Top Depth (ftKB)		Btm Depth (ftKB)							
SURFACE				12 1/4		11.0		338.0							
PRODUCTION				7 7/8		338.0		7,650.0							
Zone Statuses															
Zone Name				Status Date				Status							
CODELL				2/21/2000				PR							
NIOBRARA				12/29/1985				PR							
Casing Strings															
Surface, Actual, 332ftKB															
Casing Description		Run Date		OD (in)		Wt/Len (lb/ft)		Grade		Top Depth (ftKB)		Set Depth (ftKB)			
Surface		10/30/1985		9 5/8		36.00		N-80		11		332			
Production Casing, Actual, 7645ftKB															
Casing Description		Run Date		OD (in)		Wt/Len (lb/ft)		Grade		Top Depth (ftKB)		Set Depth (ftKB)			
Production Casing		11/9/1985		4 1/2		15.10		N-80		11		7645			
Cement															
Des				Start Date		Top (ftKB)		Btm (ftKB)							
Surface Casing Cement				10/30/1985		11.0		332.0							
Production Casing Cement				11/10/1985		6,239.0		7,645.0							
Remedial Casing Cement				2/9/2000		6,239.0		7,406.0							
Proposed Cement															
Des						Top (ftKB)		Btm (ftKB)							
Tubing Strings															
Tubing Description		Run Date		String Make		OD (in)		Wt (lb/ft)		Grade		Len (ft)		Set Depth (ftKB)	
Tubing - Production		2/18/2000		2 3/8		1.995		4.70		J-55		7,059.00			
Tubing Components															
Item Des		OD (in)		Wt (lb/ft)		Grade		Jts		Len (ft)		Btm (ftKB)		Btm (TVD) (ftKB)	
Tubing		2 3/8		4.70		J-55		225		7,057.50		7,068.5			
Pump Seating Nipple		2 3/8								1.00		7,069.5			
Mule Shoe		2 3/8								0.50		7,070.0			
Other In Hole															
Run Date		Des				Make		OD (in)		Top (ftKB)		Btm (ftKB)			
Proposed Other In Hole															
Des				Make				OD (in)		Top (ftKB)		Btm (ftKB)			
Logs															
Date		Type						Depth Top (MD) (ftKB)		Btm (ftKB)					
11/5/1985		INDUCTION						332		7,647.0					
11/8/1985		COMPENSATED DENSITY						3,700		7,648.0					

11.2

330.4

332.0

337.9

6,238.8

6,801.8

6,990.2

7,068.6

7,069.6

7,069.9

7,078.1

7,080.1

7,085.0

7,087.9

7,190.0

7,405.8

7,411.1

7,616.1

7,616.5

7,643.4

7,645.0

7,649.9

Casing Joints, 9 5/8in; 11-330.5; 9 5/8; 36.00; 1985-10-30

Surface Casing Cement, Casing, 10/30/1985 00:00; 11-332; 1985-10-30

Guide Shoe, 9 5/8in; 330.5-332; 9 5/8; 1985-10-30

Surface, Actual, 332ftKB; 11-332; 9 5/8; 36.00; 1985-10-30

2 3/8in, Tubing; 2000-02-18; 11-7068.5

Casing Joints, 4 1/2in; 11-7616; 4 1/2; 15.10; N-80; 1985-11-09

Remedial Casing Cement, Casing, 2/9/2000 00:00; 6239-7406; 2000-02-09; TOP AND BOTTOM DEPTH ESTIMATED OFF CBL 6,802.0-6,990.0ftKB on 11/30/1985 00:00 (Perforated); 6802-6990; 1985-11-30

Production Casing Cement, Casing, 11/10/1985 00:00; 6239-7645; 1985-11-10; TOC OFF CBL FROM REMEDIAL CEMENT JOB 2/09/2000

2 3/8in, Pump Seating Nipple; 2000-02-18; 7068.5-7069.5

2 3/8in, Mule Shoe; 2000-02-18; 7069.5-7070

Tubing - Production set at 7,070.0ftKB on 2/18/2000 00:00; 2000-02-18; 11-7070

7,080.0-7,085.0ftKB on 11/30/1985 00:00 (Perforated); 7080-7085; 1985-11-30

7,078.0-7,088.0ftKB on 2/11/2000 00:00 (Perforated); 7078-7088; 2000-02-11

Production Casing Cement, Casing, 11/10/1985 00:00 (plug); 7411-7645; 1985-11-10; TOC OFF CBL FROM REMEDIAL CEMENT JOB 2/09/2000

Float Collar, 4 1/2in; 7616-7616.5; 4 1/2; 1985-11-09

Shoe Joint, 4 1/2in; 7616.5-7643.5; 4 1/2; 15.10; N-80; 1985-11-09

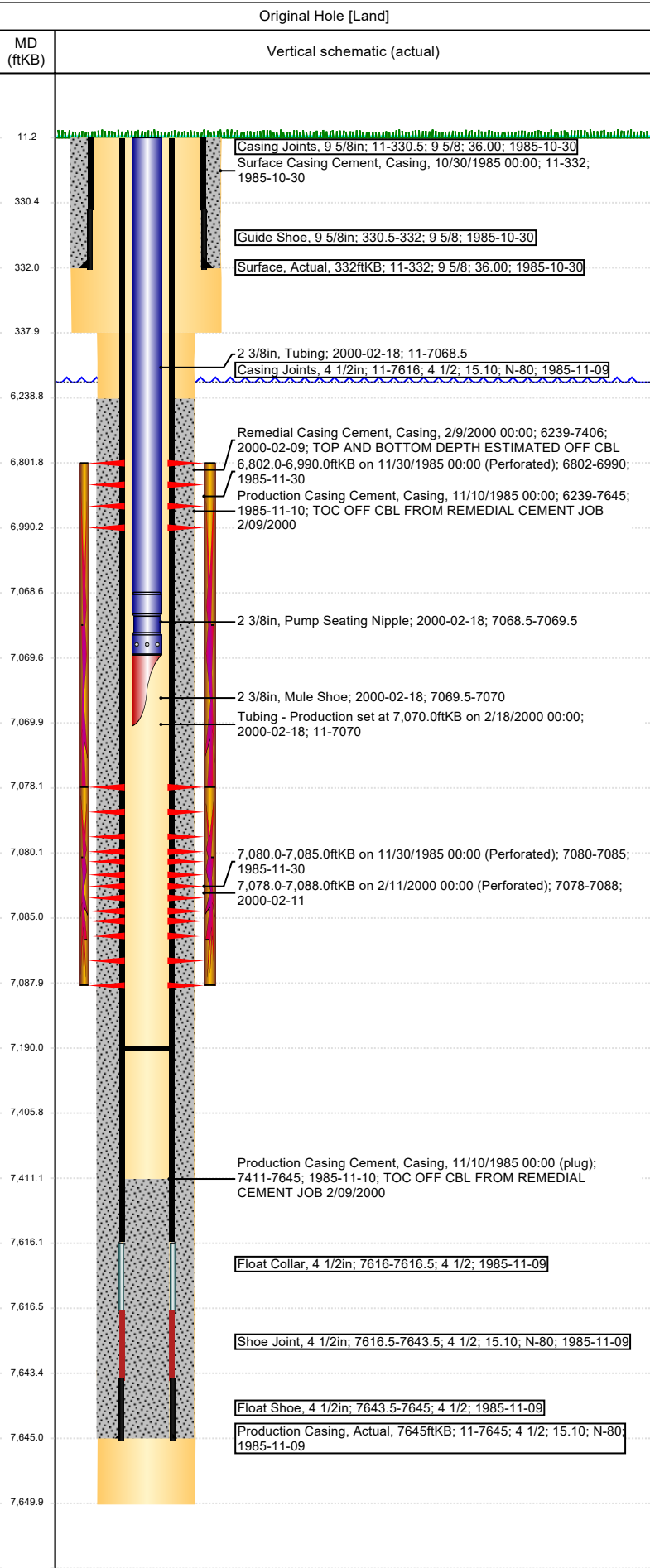
Float Shoe, 4 1/2in; 7643.5-7645; 4 1/2; 1985-11-09

Production Casing, Actual, 7645ftKB; 11-7645; 4 1/2; 15.10; N-80; 1985-11-09



# Wellbore Schematic Input Report

Well Name: STATE BOOTH 36-02



Logs						
Date	Type	Depth Top (MD) (ftKB)	Btm (ftKB)			
2/11/2000	CEMENT BOND	6,152	7,406.0			
9/18/2018	GYRO	11	7,000.0			
Perforation Data						
Linked Zone	Sum of Entered Shot Total	Top (ftKB)	Btm (ftKB)	Date		
NIOBRARA, Original Hole	10	6,802.0	6,990.0	11/30/1985		
CODELL, Original Hole	40	7,078.0	7,088.0	2/11/2000		
CODELL, Original Hole	6	7,080.0	7,085.0	11/30/1985		
Total	56					
Job Supply Amounts						
Supply Item Des	Job Supply Type	Unit L	Job Category	Total Re	Total Co	Total Ret
Daily Cost Breakdown by Category						
Field Est (Cost)	Description		Note			