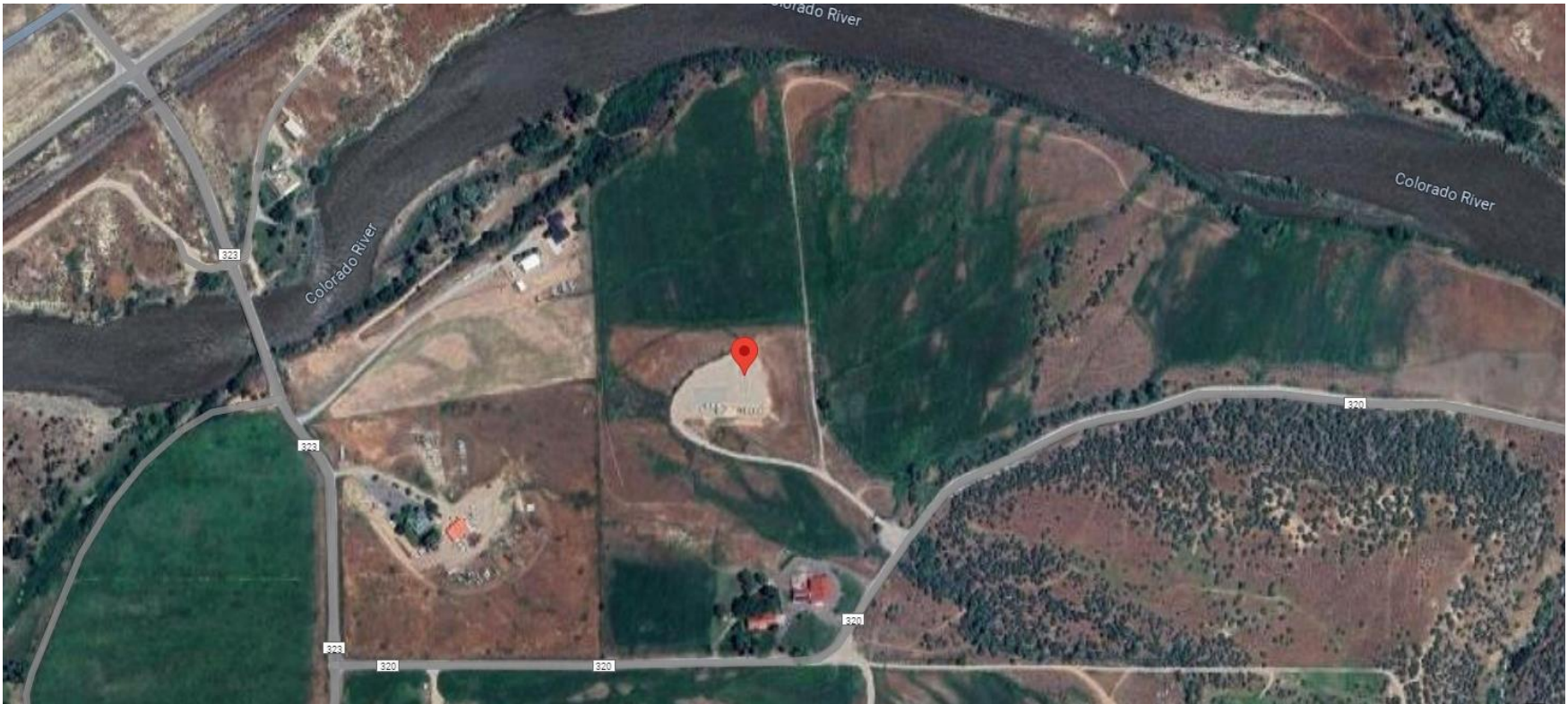


Storm Water Management and Erosion control
Location Name: TEP ROCKY MOUNTAIN LLC BUXTON RWF 23-30 pad
Location ID: 335503



Location Overview: Location is within High Priority/Density/Black Bear Habitat areas & in close proximity to NSO Habitat area & Bald Eagle Roost site. Location is approximately 332 yards from the Colorado River.

Section/Township/Range: 30 6S94W



COLORADO
Energy & Carbon Management
Commission
Department of Natural Resources

Storm water Management and Erosion control
Location Name: TEP ROCKY MOUNTAIN LLC BUXTON RWF 23-30 pad
Location ID: 335503



North West corner of location.



North East corner of location.



South West corner of location.



South East corner of location.

Storm water Management and Erosion control
Location Name: TEP ROCKY MOUNTAIN LLC BUXTON RWF 23-30 pad
Location ID: 335503



Photo # 162 Lack of stabilization/compaction



Photo # 163 Lack of stabilization/compaction

Storm water Management and Erosion control
Location Name: TEP ROCKY MOUNTAIN LLC BUXTON RWF 23-30 pad
Location ID: 335503



Photo # 164 Lack of stabilization/compaction



Photo # 165 Lack of stabilization/compaction

Storm water Management and Erosion control
Location Name: TEP ROCKY MOUNTAIN LLC BUXTON RWF 23-30 pad
Location ID: 335503



Photo # 166 Lack of stabilization/compaction



Photo # 167 Lack of stabilization/compaction

Storm water Management and Erosion control
Location Name: TEP ROCKY MOUNTAIN LLC BUXTON RWF 23-30 pad
Location ID: 335503



Photo # 168 Lack of stabilization/compaction



Photo # 169 Lack of stabilization/compaction