

# Final Reclamation and Stormwater Inspection

Date: 5/31/24

Operator: Noble Energy Inc - 100322

Location ID: 330481

Inspection Document #: 713900670

Weld County, CO

Logan Hansen  
Reclamation Specialist, ECMC



**COLORADO**  
Energy & Carbon Management  
Commission  
Department of Natural Resources

Inspection Photos  
Location Name: Western 13-35  
Location ID: 330481



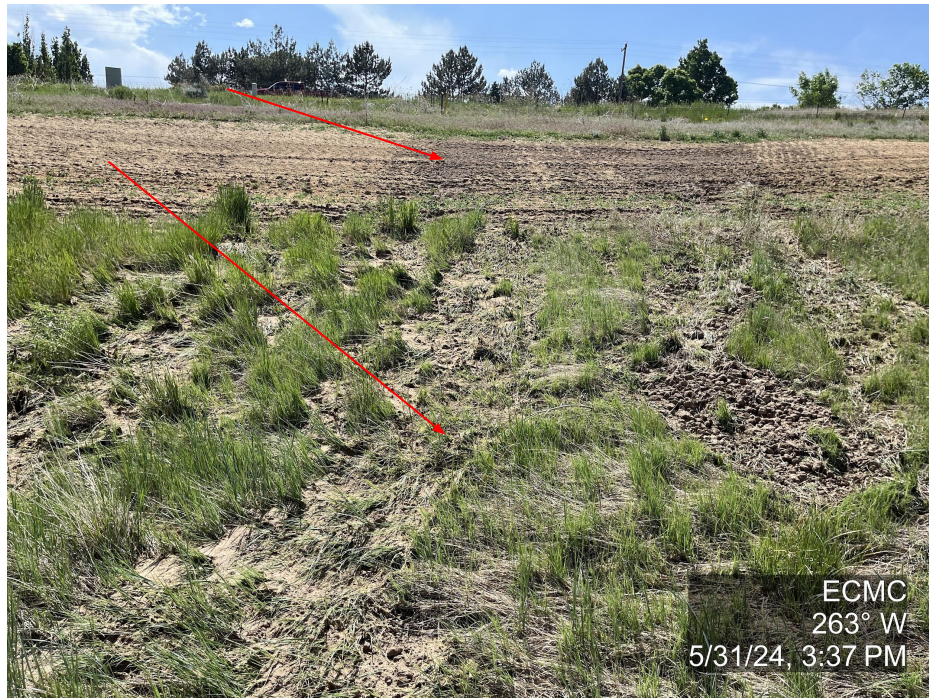
**Photo 1.** The photo was taken at the entrance to the well location facing Northeast. The photo illustrates Operator signs at the entrance.



**Photo 2.** The photo was taken at the entrance to the well location facing South. The photo illustrates the operator has conducted final reclamation activities.



Inspection Photos  
Location Name: Western 13-35  
Location ID: 330481



**Photo 3.** The photo was taken along the access road to the well location facing West. The photo illustrates some minor erosion along the access road with rilling beginning and sediment in the vegetation.



**Photo 4.** The photo was taken along the access road to the well location facing South. The photo illustrates erosion along the access road as well as erosion from issues in the previous inspection.



Inspection Photos  
Location Name: Western 13-35  
Location ID: 330481



**Photo 5.** The photo was taken at the well location facing South. The photo illustrates the Operator has conducted final reclamation activities at the well location with germination and evidence of contouring.