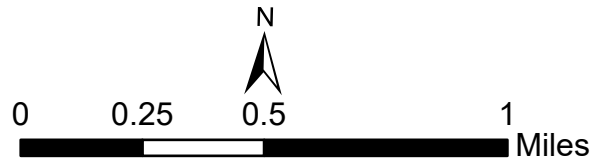


- Proposed Access Road
- Existing Access Road
- Private Lease Road
- Public Road

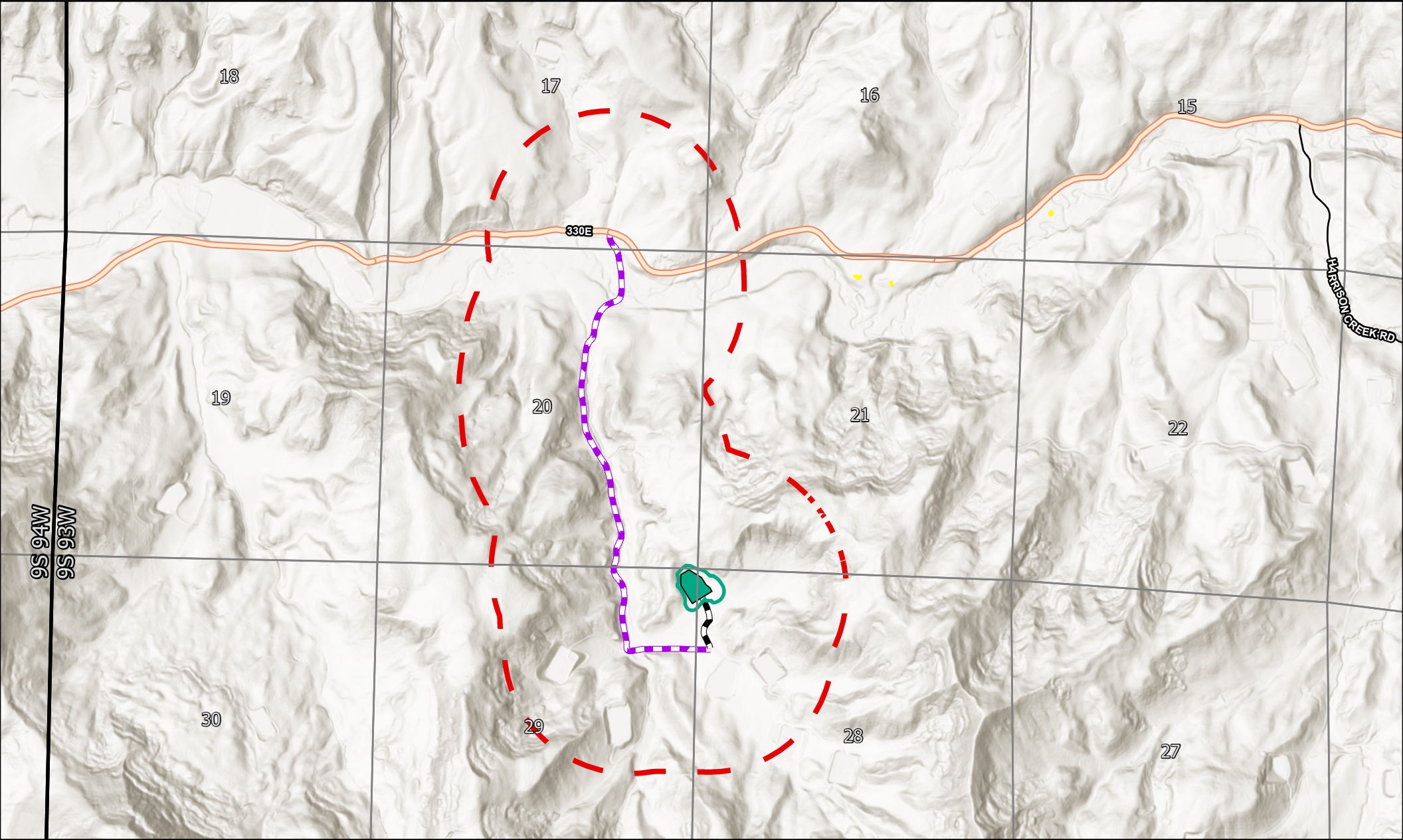
- Residential Building Units
- Laramie 0993-29-01
- Access Road Buffer (2,000ft)
- Pad Disturbance
- Working Pad Surface



Access Road Map ECMC Rule 304.b.7.F

Laramie 0993-29-01
NENE, Sec. 29
T9S R93W 6th PM
Mesa County, CO





- Proposed Access Road
- Existing Access Road
- Private Lease Road
- Public Road

- Residential Building Units
- Laramie 0993-29-01
- Access Road Buffer (2,000ft)
- Pad Disturbance
- Working Pad Surface

Access Road Map
ECMC Rule 304.b.7.F

Laramie 0993-29-01
NENE, Sec. 29
T9S R93W 6th PM
Mesa County, CO

