

NOBLE ENERGY, INC

Location: COLORADO Slot: SLOT#03 Aristocrat H14-765 (1092FSL & 2294FEL,SEC.02)

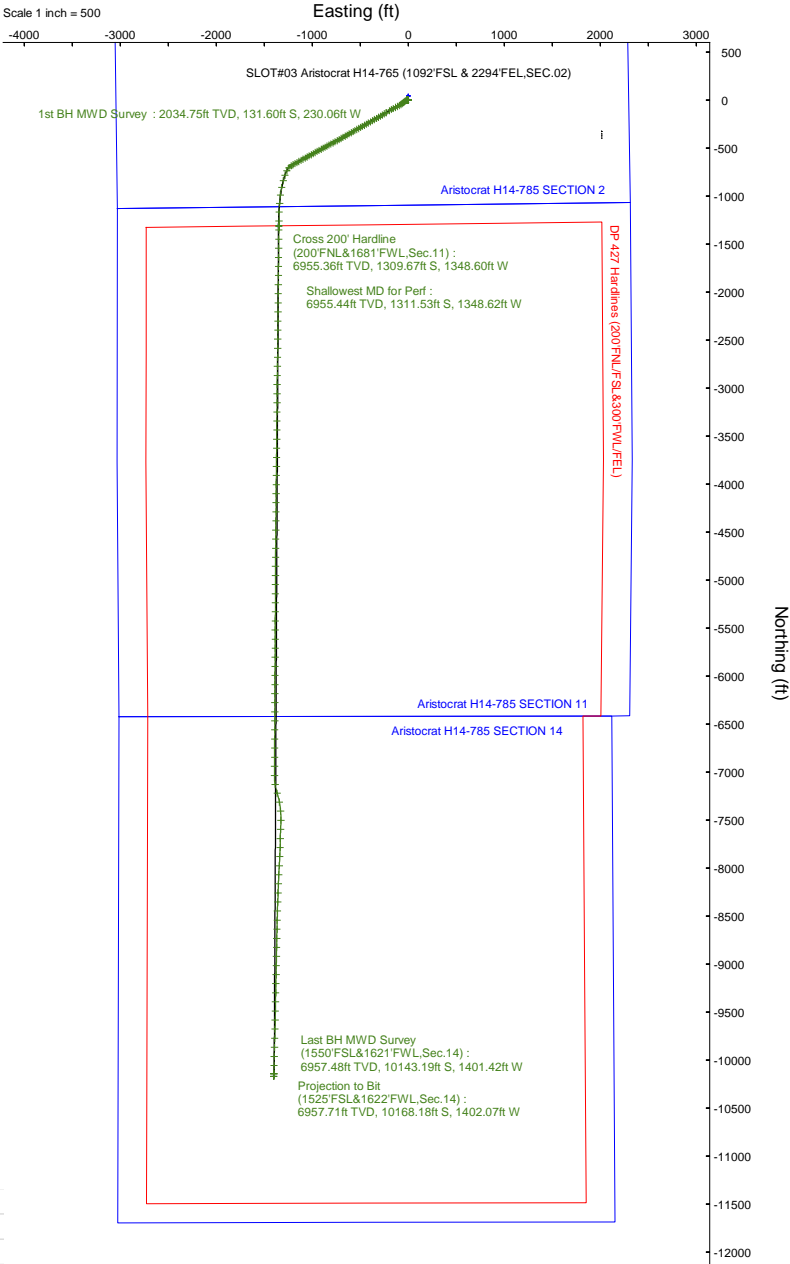
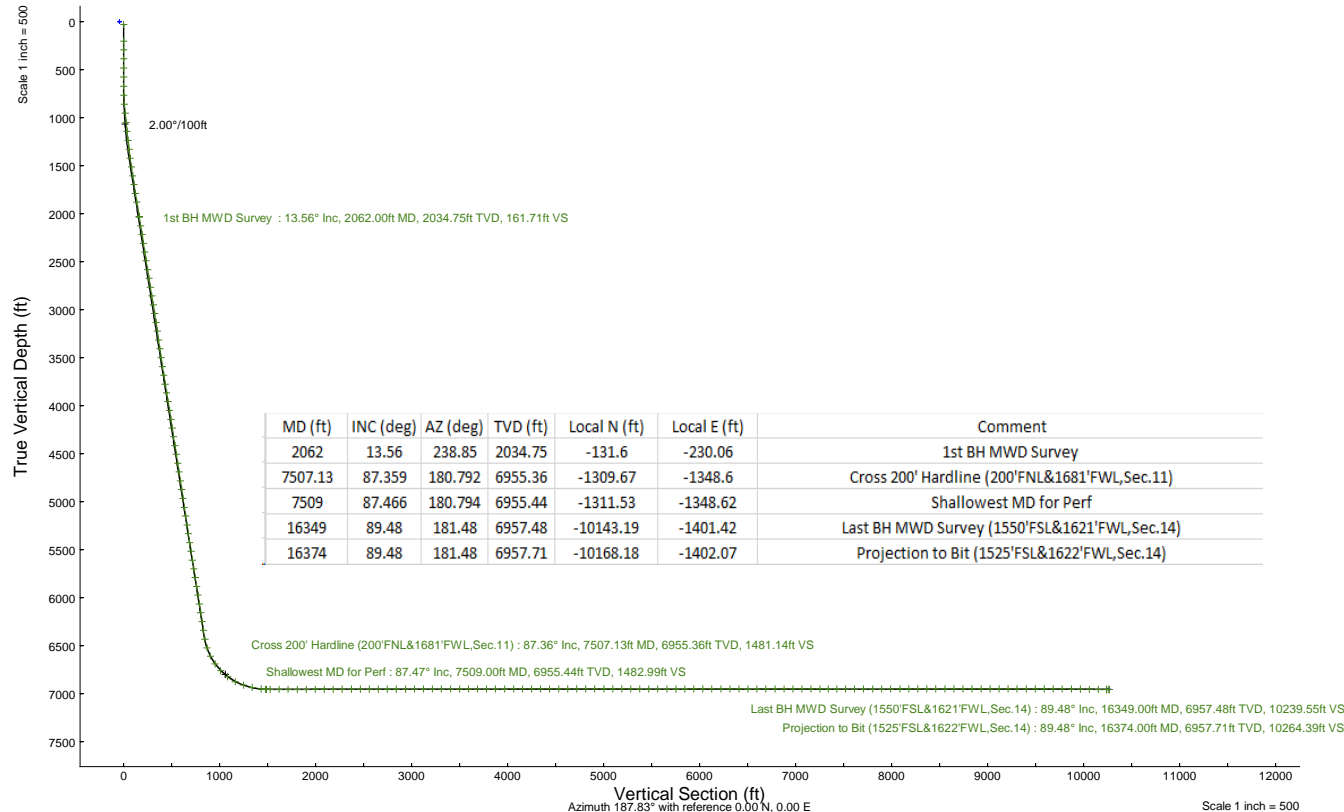
Field: WELD COUNTY (NOBLE NAD 83 GRID) Well: Aristocrat H14-765

Facility: SEC.02-T03N-R65W Wellbore: Aristocrat H14-765 PWB

Plot reference wellpath is Aristocrat H14-765 (REV-C.0) PWP	Grid System: NAD83 / Lambert Colorado SP, Northern Zone (501), US feet
True vertical depths are referenced to RIG (4781'GL+30KB@4811'RKB) (RKB)	North Reference: Grid north
Reference wellpath measured depths are referenced to RIG (4781'GL+30KB@4811'RKB) (RKB)	Scale: True distance
RIG (4781'GL+30KB@4811'RKB) (RKB) to Mean Sea Level: 4811 feet	Coordinates are in feet referenced to Slot
Mean Sea Level to Ground level (At Slot: SLOT#03 Aristocrat H14-765 (1092FSL & 2294FEL,SEC.02)): 0 feet	Depths are in feet
Offset wellpath MDs are referenced to each path's default MD datum	Created by: guenaler on 2024-05-29; Database: WA_Denver

Location Information

Facility Name			Grid East (US ft)	Grid North (US ft)	Latitude	Longitude
SEC.02-T03N-R65W			3243139.604	1335198.361	40°15'0.8640"N	104°37'44.0760"W
Slot	Local N (ft)	Local E (ft)	Grid East (US ft)	Grid North (US ft)	Latitude	Longitude
SLOT#03 Aristocrat H14-765 (1092FSL & 2294FEL,SEC.02)	-43.71	0.43	3243140.034	1335154.649	40°15'0.4320"N	104°37'44.0760"W
RIG (4781'GL+30KB@4811'RKB) to Ground level (At Slot: SLOT#03 Aristocrat H14-765 (1092FSL & 2294FEL,SEC.02))					4811ft	
Mean Sea Level to Ground level (At Slot: SLOT#03 Aristocrat H14-765 (1092FSL & 2294FEL,SEC.02))					0ft	
RIG (4781'GL+30KB@4811'RKB) (RKB) to Mean Sea Level					4811ft	





Actual Wellpath Report

Aristocrat H14-765 AWP

Page 1 of 7



REFERENCE WELLPATH IDENTIFICATION			
Operator	NOBLE ENERGY, INC	Well	Aristocrat H14-765
Field	WELD COUNTY (NOBLE NAD 83 GRID)	API	05-123-49087
Facility	SEC.02-T03N-R65W	Wellbore	Aristocrat H14-765 AWB
Slot	SLOT#03 Aristocrat H14-765 (1092'FSL & 2294'FEL,SEC.02)		

REPORT SETUP INFORMATION			
Projection System	NAD83 / Lambert Colorado SP, Northern Zone (501), US feet	Software System	WellArchitect® 6.0
North Reference	Grid	User	Guenaler
Scale	0.999957	Report Generated	5/29/2024 at 8:19:30 AM
Convergence at slot	0.56° East	Database	WA_Denver

WELLPATH LOCATION						
	Local coordinates		Grid coordinates		Geographic coordinates	
	North[ft]	East[ft]	Easting[US ft]	Northing[US ft]	Latitude	Longitude
Slot Location	-43.71	0.43	3243140.03	1335154.65	40.2501200°	-104.6289100°
Facility Reference Pt			3243139.60	1335198.36	40.2502400°	-104.6289100°
Field Reference Pt			3000000.00	4454105.15	48.7761986°	-105.5000000°

WELLPATH DATUM			
Calculation method	Minimum curvature	RIG (4781'GL+30'KB@4811'RKB) (RKB) to Facility Vertical Datum	4811.00ft
Horizontal Reference Pt	Slot	RIG (4781'GL+30'KB@4811'RKB) (RKB) to Mean Sea Level	4811.00ft
Vertical Reference Pt	RIG (4781'GL+30'KB@4811'RKB) (RKB)	RIG (4781'GL+30'KB@4811'RKB) (RKB) to Ground Level at Slot (SLOT#03 Aristocrat H14-765 (1092'FSL & 2294'FEL,SEC.02))	4811.00ft
MD Reference Pt	RIG (4781'GL+30'KB@4811'RKB) (RKB)	Section Origin	N 0.00, E 0.00 ft
Field Vertical Reference	Mean Sea Level	Section Azimuth	187.83°



Actual Wellpath Report
Aristocrat H14-765 AWP
Page 2 of 7



REFERENCE WELLPATH IDENTIFICATION			
Operator	NOBLE ENERGY, INC	Well	Aristocrat H14-765
Field	WELD COUNTY (NOBLE NAD 83 GRID)	API	05-123-49087
Facility	SEC.02-T03N-R65W	Wellbore	Aristocrat H14-765 AWB
Slot	SLOT#03 Aristocrat H14-765 (1092'FSL & 2294'FEL,SEC.02)		

WELLPATH DATA (176 stations) † = interpolated, ‡ = extrapolated station										
MD [ft]	Inclination [°]	Azimuth [°]	TVD [ft]	Vert Sect [ft]	North [ft]	East [ft]	Latitude	Longitude	DLS [°/100ft]	Comments
0.00†	0.000	280.480	0.00	0.00	0.00	0.00	40.2501200	-104.6289100	0.00	
30.00	0.000	280.480	30.00	0.00	0.00	0.00	40.2501200	-104.6289100	0.00	
204.00	0.700	280.480	204.00	-0.05	0.19	-1.05	40.2501206	-104.6289137	0.40	
294.00	1.140	279.430	293.98	-0.10	0.44	-2.47	40.2501213	-104.6289188	0.49	
389.00	1.580	285.050	388.96	-0.29	0.93	-4.67	40.2501227	-104.6289267	0.48	
484.00	1.580	292.960	483.92	-0.80	1.79	-7.14	40.2501251	-104.6289355	0.23	
579.00	1.760	293.490	578.88	-1.53	2.88	-9.68	40.2501282	-104.6289446	0.19	
673.00	2.200	265.540	672.83	-1.54	3.31	-12.80	40.2501294	-104.6289557	1.11	
768.00	4.660	239.520	767.65	1.24	1.21	-17.95	40.2501238	-104.6289743	3.00	
863.00	6.510	232.140	862.20	7.49	-4.05	-25.53	40.2501096	-104.6290016	2.09	
957.00	7.210	231.260	955.53	15.58	-11.01	-34.33	40.2500907	-104.6290334	0.75	
1052.00	7.650	228.450	1049.73	24.71	-18.94	-43.72	40.2500692	-104.6290673	0.60	
1147.00	7.830	226.340	1143.86	34.58	-27.60	-53.13	40.2500457	-104.6291013	0.35	
1241.00	9.320	231.090	1236.81	45.13	-36.80	-63.69	40.2500207	-104.6291394	1.75	
1336.00	10.460	237.060	1330.40	56.36	-46.32	-76.91	40.2499949	-104.6291871	1.61	
1431.00	12.750	243.040	1423.46	67.98	-55.76	-93.49	40.2499695	-104.6292469	2.72	
1525.00	14.950	244.270	1514.72	80.60	-65.73	-113.66	40.2499426	-104.6293195	2.36	
1620.00	14.770	243.740	1606.54	94.16	-76.41	-135.56	40.2499139	-104.6293983	0.24	
1715.00	14.160	242.860	1698.53	107.61	-87.07	-156.76	40.2498852	-104.6294746	0.68	
1809.00	14.770	238.820	1789.55	121.74	-98.52	-177.25	40.2498544	-104.6295484	1.25	
1904.00	14.510	237.060	1881.47	137.13	-111.26	-197.60	40.2498199	-104.6296218	0.54	
2062.00	13.560	238.850	2034.75	161.71	-131.60	-230.06	40.2497650	-104.6297388	0.66	1st BH MWD Survey
2157.00	14.890	239.430	2126.83	176.30	-143.57	-250.10	40.2497327	-104.6298110	1.41	
2251.00	14.860	239.990	2217.68	191.19	-155.74	-270.94	40.2496998	-104.6298861	0.16	
2346.00	13.610	239.330	2309.77	205.62	-167.54	-291.10	40.2496680	-104.6299587	1.33	
2441.00	14.950	240.340	2401.83	220.04	-179.30	-311.36	40.2496362	-104.6300317	1.43	
2535.00	14.700	241.170	2492.70	234.54	-191.05	-332.35	40.2496045	-104.6301073	0.35	
2630.00	14.270	240.050	2584.68	248.91	-202.71	-353.05	40.2495731	-104.6301819	0.54	
2724.00	15.050	239.880	2675.62	263.51	-214.62	-373.65	40.2495410	-104.6302561	0.83	
2819.00	15.200	239.870	2767.33	278.76	-227.06	-395.09	40.2495074	-104.6303333	0.16	
2914.00	14.920	240.790	2859.06	293.78	-239.28	-416.53	40.2494744	-104.6304105	0.39	
3008.00	15.120	240.790	2949.85	308.46	-251.17	-437.80	40.2494424	-104.6304871	0.21	
3103.00	14.050	240.800	3041.79	322.86	-262.84	-458.68	40.2494109	-104.6305623	1.13	
3198.00	15.040	240.800	3133.74	337.23	-274.48	-479.50	40.2493795	-104.6306374	1.04	
3292.00	12.890	241.180	3224.96	350.84	-285.49	-499.34	40.2493498	-104.6307088	2.29	
3387.00	12.820	240.590	3317.58	363.54	-295.77	-517.80	40.2493221	-104.6307753	0.16	
3481.00	14.270	241.660	3408.96	376.69	-306.39	-537.09	40.2492935	-104.6308448	1.57	
3576.00	13.130	239.630	3501.26	390.27	-317.41	-556.70	40.2492638	-104.6309154	1.30	
3671.00	13.910	240.170	3593.63	403.92	-328.54	-575.92	40.2492337	-104.6309846	0.83	
3765.00	14.520	240.210	3684.75	418.01	-340.02	-595.95	40.2492028	-104.6310568	0.65	
3860.00	14.630	239.850	3776.69	432.67	-351.96	-616.66	40.2491705	-104.6311314	0.15	
3955.00	14.990	240.340	3868.53	447.53	-364.06	-637.71	40.2491379	-104.6312072	0.40	
4049.00	15.050	240.450	3959.32	462.33	-376.10	-658.89	40.2491054	-104.6312835	0.07	
4144.00	14.810	240.150	4051.12	477.24	-388.23	-680.15	40.2490727	-104.6313601	0.27	
4239.00	14.040	240.090	4143.12	491.72	-400.01	-700.67	40.2490409	-104.6314340	0.81	



Actual Wellpath Report
Aristocrat H14-765 AWP
Page 3 of 7



REFERENCE WELLPATH IDENTIFICATION			
Operator	NOBLE ENERGY, INC	Well	Aristocrat H14-765
Field	WELD COUNTY (NOBLE NAD 83 GRID)	API	05-123-49087
Facility	SEC.02-T03N-R65W	Wellbore	Aristocrat H14-765 AWB
Slot	SLOT#03 Aristocrat H14-765 (1092'FSL & 2294'FEL,SEC.02)		

WELLPATH DATA (176 stations) † = interpolated, ‡ = extrapolated station										
MD [ft]	Inclination [°]	Azimuth [°]	TVD [ft]	Vert Sect [ft]	North [ft]	East [ft]	Latitude	Longitude	DLS [°/100ft]	Comments
4333.00	14.930	241.640	4234.13	505.84	-411.45	-721.21	40.2490100	-104.6315080	1.03	
4428.00	14.470	241.760	4326.02	520.06	-422.88	-742.43	40.2489792	-104.6315844	0.49	
4523.00	14.960	241.570	4417.91	534.30	-434.34	-763.67	40.2489484	-104.6316609	0.52	
4617.00	15.050	241.650	4508.70	548.68	-445.91	-785.08	40.2489172	-104.6317380	0.10	
4712.00	14.780	241.630	4600.50	563.11	-457.52	-806.60	40.2488859	-104.6318155	0.28	
4807.00	13.490	241.280	4692.62	576.87	-468.60	-826.98	40.2488560	-104.6318889	1.36	
4902.00	14.640	241.330	4784.77	590.61	-479.69	-847.23	40.2488261	-104.6319618	1.21	
4996.00	13.980	241.500	4875.85	604.40	-490.81	-867.63	40.2487962	-104.6320353	0.70	
5091.00	14.040	243.590	4968.03	617.68	-501.41	-888.04	40.2487676	-104.6321088	0.54	
5186.00	14.990	241.370	5060.00	631.47	-512.42	-909.14	40.2487380	-104.6321848	1.16	
5280.00	14.490	241.490	5150.90	645.66	-523.86	-930.15	40.2487071	-104.6322604	0.53	
5375.00	14.190	241.270	5242.94	659.64	-535.13	-950.80	40.2486767	-104.6323348	0.32	
5470.00	13.390	241.110	5335.20	673.15	-546.04	-970.64	40.2486473	-104.6324063	0.84	
5565.00	14.770	240.610	5427.35	687.05	-557.30	-990.83	40.2486170	-104.6324789	1.46	
5659.00	15.070	241.490	5518.18	701.54	-569.01	-1012.01	40.2485854	-104.6325552	0.40	
5754.00	14.730	241.130	5609.98	716.08	-580.74	-1033.43	40.2485538	-104.6326324	0.37	
5848.00	14.870	241.050	5700.87	730.44	-592.34	-1054.45	40.2485225	-104.6327081	0.15	
5943.00	14.860	241.060	5792.69	745.03	-604.14	-1075.78	40.2484907	-104.6327849	0.01	
6038.00	14.870	241.090	5884.51	759.61	-615.93	-1097.11	40.2484589	-104.6328617	0.01	
6132.00	14.750	241.260	5975.38	773.96	-627.51	-1118.16	40.2484277	-104.6329375	0.14	
6227.00	14.850	241.320	6067.23	788.40	-639.17	-1139.45	40.2483962	-104.6330142	0.11	
6322.00	14.270	240.890	6159.18	802.68	-650.71	-1160.36	40.2483651	-104.6330895	0.62	
6416.00	13.920	240.620	6250.35	816.48	-661.89	-1180.33	40.2483350	-104.6331615	0.38	
6511.00	13.900	241.680	6342.56	830.12	-672.91	-1200.33	40.2483053	-104.6332335	0.27	
6606.00	16.370	237.650	6434.26	845.49	-685.49	-1221.69	40.2482713	-104.6333104	2.82	
6700.00	21.080	222.800	6523.31	867.92	-705.00	-1244.39	40.2482183	-104.6333924	7.09	
6795.00	27.810	206.670	6609.85	902.97	-737.41	-1266.00	40.2481300	-104.6334710	9.92	
6890.00	35.120	199.990	6690.85	950.73	-782.97	-1285.32	40.2480054	-104.6335418	8.51	
6984.00	45.360	195.220	6762.52	1010.50	-840.82	-1303.39	40.2478471	-104.6336085	11.37	
7079.00	52.350	191.740	6825.00	1081.64	-910.35	-1319.94	40.2476567	-104.6336703	7.86	
7174.00	62.170	187.000	6876.34	1161.39	-989.09	-1332.75	40.2474409	-104.6337189	11.15	
7268.00	72.850	184.890	6912.25	1248.06	-1075.35	-1341.67	40.2472044	-104.6337539	11.55	
7363.00	77.150	181.100	6936.84	1339.45	-1166.95	-1346.43	40.2469531	-104.6337741	5.94	
7457.00	84.510	180.750	6951.81	1431.52	-1259.67	-1347.93	40.2466986	-104.6337827	7.84	
7507.13†	87.359	180.792	6955.36	1481.14	-1309.67	-1348.60	40.2465614	-104.6337869	5.68	Cross 200' Hardline (200'FNL&1681'FWL,Sec.11)
7509.00†	87.466	180.794	6955.44	1482.99	-1311.53	-1348.62	40.2465563	-104.6337870	5.68	Shallowest MD for Perf
7552.00	89.910	180.830	6956.43	1525.65	-1354.51	-1349.23	40.2464384	-104.6337907	5.68	
7647.00	89.820	179.880	6956.65	1619.85	-1449.51	-1349.82	40.2461776	-104.6337962	1.00	
7741.00	90.000	180.820	6956.80	1713.05	-1543.51	-1350.40	40.2459196	-104.6338015	1.02	
7836.00	90.180	180.840	6956.65	1807.34	-1638.50	-1351.77	40.2456589	-104.6338098	0.19	
7930.00	90.220	180.460	6956.32	1900.60	-1732.49	-1352.84	40.2454010	-104.6338169	0.41	
8025.00	90.090	180.470	6956.07	1994.82	-1827.49	-1353.61	40.2451402	-104.6338230	0.14	
8120.00	90.250	180.790	6955.78	2089.07	-1922.48	-1354.65	40.2448795	-104.6338300	0.38	
8215.00	90.150	180.600	6955.45	2183.33	-2017.47	-1355.81	40.2446188	-104.6338375	0.23	
8309.00	90.220	180.590	6955.15	2276.58	-2111.47	-1356.78	40.2443608	-104.6338443	0.08	



Actual Wellpath Report
Aristocrat H14-765 AWP
Page 4 of 7



REFERENCE WELLPATH IDENTIFICATION			
Operator	NOBLE ENERGY, INC	Well	Aristocrat H14-765
Field	WELD COUNTY (NOBLE NAD 83 GRID)	API	05-123-49087
Facility	SEC.02-T03N-R65W	Wellbore	Aristocrat H14-765 AWB
Slot	SLOT#03 Aristocrat H14-765 (1092'FSL & 2294'FEL,SEC.02)		

WELLPATH DATA (176 stations)										
MD [ft]	Inclination [°]	Azimuth [°]	TVD [ft]	Vert Sect [ft]	North [ft]	East [ft]	Latitude	Longitude	DLS [°/100ft]	Comments
8404.00	90.180	180.720	6954.82	2370.84	-2206.46	-1357.87	40.2441001	-104.6338515	0.14	
8499.00	90.310	180.720	6954.41	2465.11	-2301.45	-1359.06	40.2438394	-104.6338591	0.14	
8593.00	90.220	180.600	6953.98	2558.37	-2395.45	-1360.15	40.2435815	-104.6338662	0.16	
8688.00	89.910	180.380	6953.87	2652.59	-2490.44	-1360.96	40.2433207	-104.6338725	0.40	
8783.00	89.970	180.440	6953.97	2746.80	-2585.44	-1361.64	40.2430600	-104.6338782	0.09	
8877.00	90.000	180.660	6953.99	2840.04	-2679.44	-1362.54	40.2428020	-104.6338848	0.24	
8972.00	90.180	181.130	6953.84	2934.35	-2774.42	-1364.02	40.2425413	-104.6338934	0.53	
9067.00	90.370	180.960	6953.39	3028.68	-2869.41	-1365.76	40.2422807	-104.6339029	0.27	
9162.00	89.970	180.510	6953.11	3122.95	-2964.40	-1366.97	40.2420200	-104.6339106	0.63	
9256.00	89.880	180.100	6953.23	3216.14	-3058.40	-1367.48	40.2417620	-104.6339157	0.45	
9351.00	90.220	180.560	6953.15	3310.33	-3153.39	-1368.02	40.2415012	-104.6339210	0.60	
9446.00	89.940	180.340	6953.01	3404.54	-3248.39	-1368.77	40.2412405	-104.6339270	0.37	
9540.00	89.910	180.380	6953.14	3497.75	-3342.39	-1369.36	40.2409825	-104.6339324	0.05	
9635.00	89.940	180.510	6953.26	3591.96	-3437.39	-1370.10	40.2407218	-104.6339383	0.14	
9730.00	90.150	180.680	6953.19	3686.20	-3532.38	-1371.08	40.2404610	-104.6339452	0.28	
9824.00	89.820	180.510	6953.21	3779.45	-3626.38	-1372.06	40.2402031	-104.6339520	0.39	
9919.00	90.090	180.700	6953.29	3873.70	-3721.37	-1373.06	40.2399423	-104.6339589	0.35	
10014.00	90.340	180.700	6952.93	3967.97	-3816.36	-1374.22	40.2396816	-104.6339664	0.26	
10108.00	90.250	180.910	6952.44	4061.26	-3910.35	-1375.54	40.2394237	-104.6339744	0.24	
10203.00	90.120	180.700	6952.14	4155.55	-4005.34	-1376.88	40.2391630	-104.6339825	0.26	
10298.00	89.910	180.410	6952.11	4249.78	-4100.34	-1377.80	40.2389023	-104.6339891	0.38	
10392.00	90.030	180.530	6952.16	4343.01	-4194.33	-1378.57	40.2386443	-104.6339952	0.18	
10487.00	89.910	180.080	6952.21	4437.19	-4289.33	-1379.08	40.2383835	-104.6340003	0.49	
10582.00	90.280	180.810	6952.05	4531.40	-4384.33	-1379.81	40.2381228	-104.6340063	0.86	
10676.00	90.000	180.640	6951.82	4624.68	-4478.32	-1381.00	40.2378648	-104.6340138	0.35	
10771.00	90.280	180.410	6951.59	4718.91	-4573.32	-1381.87	40.2376041	-104.6340203	0.38	
10866.00	90.000	180.490	6951.36	4813.12	-4668.31	-1382.62	40.2373434	-104.6340262	0.31	
10960.00	90.090	180.420	6951.29	4906.34	-4762.31	-1383.37	40.2370854	-104.6340322	0.12	
11055.00	90.030	180.580	6951.19	5000.57	-4857.31	-1384.19	40.2368247	-104.6340385	0.18	
11150.00	89.850	180.340	6951.29	5094.78	-4952.30	-1384.96	40.2365639	-104.6340446	0.32	
11244.00	90.180	180.290	6951.26	5187.98	-5046.30	-1385.47	40.2363059	-104.6340497	0.36	
11339.00	88.680	179.780	6952.21	5282.09	-5141.29	-1385.53	40.2360452	-104.6340532	1.67	
11434.00	90.000	180.230	6953.30	5376.20	-5236.29	-1385.54	40.2357845	-104.6340566	1.47	
11528.00	89.910	180.230	6953.38	5469.37	-5330.28	-1385.92	40.2355265	-104.6340612	0.10	
11623.00	89.910	180.370	6953.52	5563.55	-5425.28	-1386.42	40.2352657	-104.6340663	0.15	
11718.00	89.880	180.630	6953.70	5657.78	-5520.28	-1387.24	40.2350050	-104.6340726	0.28	
11813.00	90.000	178.920	6953.80	5751.84	-5615.27	-1386.87	40.2347442	-104.6340746	1.80	
11907.00	90.800	180.940	6953.14	5844.94	-5709.27	-1386.76	40.2344862	-104.6340775	2.31	
12002.00	90.400	180.610	6952.15	5939.21	-5804.25	-1388.04	40.2342256	-104.6340854	0.55	
12097.00	90.030	180.580	6951.79	6033.46	-5899.25	-1389.03	40.2339648	-104.6340923	0.39	
12191.00	89.780	180.010	6951.95	6126.65	-5993.24	-1389.51	40.2337068	-104.6340973	0.66	
12286.00	90.120	180.440	6952.03	6220.81	-6088.24	-1389.89	40.2334461	-104.6341019	0.58	
12381.00	90.000	180.260	6951.93	6315.00	-6183.24	-1390.47	40.2331854	-104.6341073	0.23	
12475.00	89.450	179.980	6952.38	6408.15	-6277.24	-1390.66	40.2329273	-104.6341113	0.66	
12570.00	89.720	180.230	6953.07	6502.29	-6372.24	-1390.84	40.2326666	-104.6341153	0.39	



Actual Wellpath Report
Aristocrat H14-765 AWP
Page 5 of 7



REFERENCE WELLPATH IDENTIFICATION			
Operator	NOBLE ENERGY, INC	Well	Aristocrat H14-765
Field	WELD COUNTY (NOBLE NAD 83 GRID)	API	05-123-49087
Facility	SEC.02-T03N-R65W	Wellbore	Aristocrat H14-765 AWB
Slot	SLOT#03 Aristocrat H14-765 (1092'FSL & 2294'FEL,SEC.02)		

WELLPATH DATA (176 stations) † = interpolated, ‡ = extrapolated station										
MD [ft]	Inclination [°]	Azimuth [°]	TVD [ft]	Vert Sect [ft]	North [ft]	East [ft]	Latitude	Longitude	DLS [°/100ft]	Comments
12665.00	90.520	180.590	6952.87	6596.49	-6467.23	-1391.52	40.2324059	-104.6341210	0.92	
12759.00	90.060	180.270	6952.39	6689.71	-6561.23	-1392.22	40.2321479	-104.6341268	0.60	
12854.00	90.030	180.370	6952.32	6783.89	-6656.23	-1392.75	40.2318871	-104.6341321	0.11	
12949.00	89.940	180.230	6952.34	6878.07	-6751.23	-1393.25	40.2316264	-104.6341372	0.18	
13043.00	90.030	180.200	6952.37	6971.24	-6845.23	-1393.60	40.2313684	-104.6341417	0.10	
13138.00	90.060	180.130	6952.29	7065.40	-6940.23	-1393.88	40.2311076	-104.6341460	0.08	
13233.00	90.180	181.310	6952.10	7159.66	-7035.22	-1395.07	40.2308469	-104.6341536	1.25	
13328.00	89.050	169.870	6952.74	7252.35	-7129.77	-1387.78	40.2305872	-104.6341308	12.10	
13422.00	90.090	163.510	6953.44	7339.97	-7221.20	-1366.15	40.2303357	-104.6340565	6.86	
13517.00	89.910	169.050	6953.44	7428.30	-7313.45	-1343.63	40.2300818	-104.6339791	5.83	
13612.00	89.970	175.290	6953.54	7519.73	-7407.52	-1330.69	40.2298233	-104.6339361	6.57	
13706.00	90.460	181.390	6953.19	7612.40	-7501.43	-1327.97	40.2295654	-104.6339296	6.51	
13801.00	89.970	182.750	6952.83	7706.92	-7596.37	-1331.40	40.2293050	-104.6339452	1.52	
13896.00	89.850	180.030	6952.98	7801.31	-7691.33	-1333.70	40.2290444	-104.6339568	2.87	
13990.00	90.030	182.480	6953.08	7894.68	-7785.30	-1335.76	40.2287865	-104.6339675	2.61	
14085.00	90.220	182.170	6952.87	7989.25	-7880.22	-1339.62	40.2285260	-104.6339846	0.38	
14180.00	90.620	184.040	6952.18	8083.92	-7975.08	-1344.76	40.2282658	-104.6340063	2.01	
14274.00	89.880	182.420	6951.77	8177.61	-8068.92	-1350.06	40.2280084	-104.6340286	1.89	
14369.00	90.120	182.210	6951.77	8272.17	-8163.85	-1353.90	40.2277479	-104.6340456	0.34	
14464.00	89.970	182.090	6951.69	8366.70	-8258.78	-1357.46	40.2274874	-104.6340617	0.20	
14558.00	90.060	182.260	6951.67	8460.25	-8352.71	-1361.03	40.2272297	-104.6340778	0.20	
14653.00	90.250	181.640	6951.41	8554.75	-8447.66	-1364.26	40.2269692	-104.6340927	0.68	
14748.00	90.310	181.080	6950.95	8649.14	-8542.63	-1366.51	40.2267086	-104.6341041	0.59	
14843.00	89.750	181.250	6950.90	8743.50	-8637.61	-1368.45	40.2264479	-104.6341143	0.62	
14937.00	89.820	181.210	6951.25	8836.87	-8731.58	-1370.46	40.2261900	-104.6341248	0.09	
15032.00	89.940	181.450	6951.45	8931.26	-8826.56	-1372.67	40.2259294	-104.6341360	0.28	
15126.00	90.000	181.080	6951.50	9024.65	-8920.54	-1374.74	40.2256715	-104.6341468	0.40	
15221.00	90.000	180.790	6951.50	9118.96	-9015.52	-1376.29	40.2254108	-104.6341556	0.31	
15316.00	90.060	181.410	6951.45	9213.31	-9110.50	-1378.12	40.2251501	-104.6341655	0.66	
15410.00	89.940	181.250	6951.45	9306.70	-9204.48	-1380.30	40.2248922	-104.6341766	0.21	
15505.00	90.370	180.780	6951.19	9401.03	-9299.46	-1381.98	40.2246316	-104.6341859	0.67	
15600.00	90.220	181.420	6950.70	9495.38	-9394.44	-1383.81	40.2243709	-104.6341958	0.69	
15694.00	89.910	180.850	6950.59	9588.73	-9488.43	-1385.67	40.2241130	-104.6342057	0.69	
15789.00	89.420	181.260	6951.15	9683.07	-9583.41	-1387.42	40.2238523	-104.6342153	0.67	
15883.00	89.660	181.740	6951.90	9776.49	-9677.37	-1389.88	40.2235945	-104.6342274	0.57	
15978.00	89.080	181.520	6952.95	9870.93	-9772.33	-1392.58	40.2233339	-104.6342404	0.65	
16073.00	89.230	181.320	6954.35	9965.33	-9867.29	-1394.93	40.2230733	-104.6342522	0.26	
16167.00	89.380	181.240	6955.49	10058.71	-9961.26	-1397.03	40.2228154	-104.6342630	0.18	
16262.00	89.320	181.410	6956.57	10153.09	-10056.23	-1399.23	40.2225548	-104.6342741	0.19	
16349.00	89.480	181.480	6957.48	10239.55	-10143.19	-1401.42	40.2223162	-104.6342850	0.20	Last BH MWD Survey (1550'FSL&1621'FWL, Sec.14)
16374.00†	89.480	181.480	6957.71	10264.39	-10168.18	-1402.07	40.2222476	-104.6342882	0.00	Projection to Bit (1525'FSL&1622'FWL, Sec.14)



Actual Wellpath Report

Aristocrat H14-765 AWP

Page 6 of 7



REFERENCE WELLPATH IDENTIFICATION			
Operator	NOBLE ENERGY, INC	Well	Aristocrat H14-765
Field	WELD COUNTY (NOBLE NAD 83 GRID)	API	05-123-49087
Facility	SEC.02-T03N-R65W	Wellbore	Aristocrat H14-765 AWB
Slot	SLOT#03 Aristocrat H14-765 (1092'FSL & 2294'FEL,SEC.02)		

TARGETS								
Name	TVD [ft]	North [ft]	East [ft]	Grid East [US ft]	Grid North [US ft]	Latitude	Longitude	Shape
Aristocrat H14-785 SECTION 11	1.00	43.71	-0.43	3243139.60	1335198.36	40.2502400	-104.6289100	polygon
	2D Polygon: dimensions not calculated							
Aristocrat H14-785 SECTION 14	1.00	43.71	-0.43	3243139.60	1335198.36	40.2502400	-104.6289100	polygon
	2D Polygon: dimensions not calculated							
Aristocrat H14-785 SECTION 2	1.00	43.71	-0.43	3243139.60	1335198.36	40.2502400	-104.6289100	polygon
	2D Polygon: dimensions not calculated							
Aristocrat H14-765 BHL PLAN (1523'FSL & 1626'FWL,SEC.14)	6956.00	-10169.99	-1398.15	3241741.95	1324985.12	40.2222425	-104.6342742	point
Aristocrat H14-765 PLAT/PLAN (200'FNL & 1677'FWL,SEC.11)	6956.00	-1309.67	-1352.87	3241787.22	1333845.03	40.2465615	-104.6338022	point
DP 427 Hardlines (200'FNL/FSL&300'FWL/FEL)	7302.00	43.71	-0.43	3243139.60	1335198.36	40.2502400	-104.6289100	polygon
	2D Polygon: dimensions not calculated							

WELLPATH COMPOSITION - Ref Wellbore: Aristocrat H14-765 AWB Ref Wellpath: Aristocrat H14-765 AWP					
Start MD [ft]	End MD [ft]	Positional Uncertainty Model	Log Name/Comment	Wellbore	Survey Date
30.00	1904.00	OWSG MWD rev2 - Standard	13.5" Ensign Surface OWSG MWD rev2 - Standard	Aristocrat H14-765 AWB	5/26/2024
1904.00	16374.00	OWSG MWD rev2 (MS+IFR1)	8.5" BHI ATC - OWSG MWD rev2 (MS+IFR1) <2062'-16349'>	Aristocrat H14-765 AWB	5/26/2024



Actual Wellpath Report
Aristocrat H14-765 AWP
Page 7 of 7



REFERENCE WELLPATH IDENTIFICATION			
Operator	NOBLE ENERGY, INC	Well	Aristocrat H14-765
Field	WELD COUNTY (NOBLE NAD 83 GRID)	API	05-123-49087
Facility	SEC.02-T03N-R65W	Wellbore	Aristocrat H14-765 AWB
Slot	SLOT#03 Aristocrat H14-765 (1092'FSL & 2294'FEL,SEC.02)		

WELLPATH COMMENTS				
MD [ft]	Inclination [°]	Azimuth [°]	TVD [ft]	Comment
2062.00	13.560	238.850	2034.75	1st BH MWD Survey
7507.13	87.359	180.792	6955.36	Cross 200' Hardline (200'FNL&1681'FWL,Sec.11)
7509.00	87.466	180.794	6955.44	Shallowest MD for Perf
16349.00	89.480	181.480	6957.48	Last BH MWD Survey (1550'FSL&1621'FWL,Sec.14)
16374.00	89.480	181.480	6957.71	Projection to Bit (1525'FSL&1622'FWL,Sec.14)