

KT Resources LLC
WRD Wyatt-62N97W 25SESE
Location ID: 336393



Last years and this years weed s



As signs are replaced additional information will be required

KT Resources LLC
WRD Wyatt-62N97W 25SESE
Location ID: 336393



Unused equipment



Last year and this years weeds

KT Resources LLC
WRD Wyatt-62N97W 25SESE
Location ID: 336393



Open to wildlife



Unused equipment

KT Resources LLC
WRD Wyatt-62N97W 25SESE
Location ID: 336393



Suspect containment leak in corner



Containment corner wet

KT Resources LLC
WRD Wyatt-62N97W 25SESE
Location ID: 336393

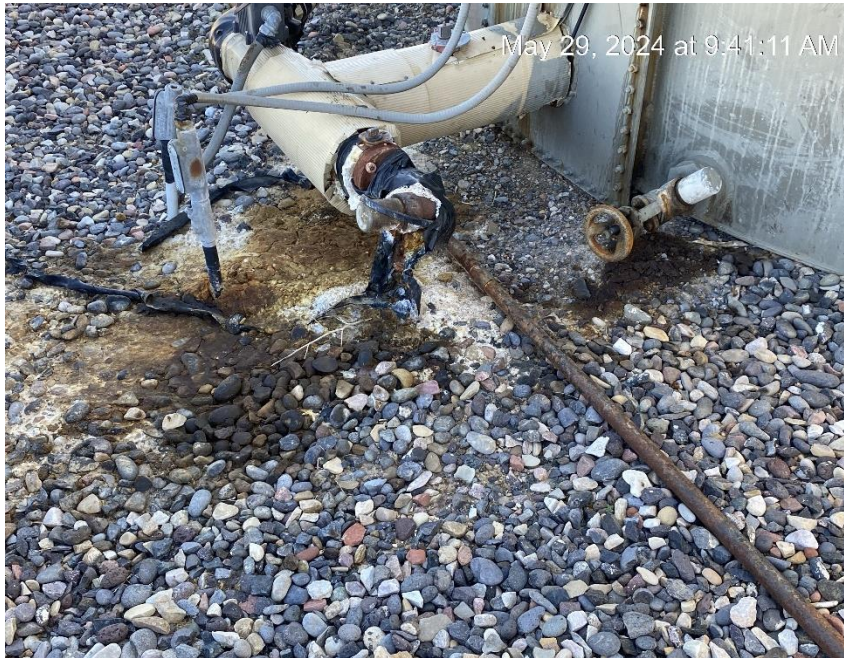


Stained soil



Debris

KT Resources LLC
WRD Wyatt-62N97W 25SESE
Location ID: 336393



Soil staining



Soil staining

KT Resources LLC
WRD Wyatt-62N97W 25SESE
Location ID: 336393



Oily waste. Illegible label.



Soil staining

KT Resources LLC
WRD Wyatt-62N97W 25SESE
Location ID: 336393



Unlabeled tank



Debris

KT Resources LLC
WRD Wyatt-62N97W 25SESE
Location ID: 336393



As signs are replaced additional information is required



No display of gas calibration on the WRD Wyatt 25-44W

KT Resources LLC
WRD Wyatt-62N97W 25SESE
Location ID: 336393

Env. 5868' Rio Blanco REC 583
May 29, 2024 at 9:46:26 AM

IMPACT ANALYTICAL SYSTEMS INC.
365 SOUTH MAIN
BRIGHTON, CO 80601
303-637-0150 www.impactanalytical.com

Meter S/N
15826765
COC 65320A

Station Name WRD Wyatt 25-44
Station No. 120275530 Producer 3107
Sec 25 Township 8N Range 97W
Diff 250" Temp Range 0-150° Tube Size 2.068
Static 200" Absolute 11.89 PSIg

	Date	Orifice Plate Size	Meter Test Date	Sample Date
644	3-8-18	1.000	3-8-18	3-8-18
KB	9-18-18	1.000	9-18-18	9-18-18
KB	3-20-19	1.000	3-20-19	3-20-19
.7645				9-10-19
	2-8-22	1.000	2-8-22	

KB

Gas calibration never done. Old operator card.



Stained soil at separator

**KT Resources LLC
WRD Wyatt-62N97W 25SESE
Location ID: 336393**



Southwest entrance/exit to county road



Erosion and sediment migration from location

KT Resources LLC
WRD Wyatt-62N97W 25SESE
Location ID: 336393



Lack of stabilization. New weed growth.



Lack of stabilization

**KT Resources LLC
WRD Wyatt-62N97W 25SESE
Location ID: 336393**



Northwest entrance/exit to location to county road



Vehicle tracking to county road

KT Resources LLC
WRD Wyatt-62N97W 25SESE
Location ID: 336393



Location from Southwest corner



Location from Southeast corner

KT Resources LLC
WRD Wyatt-62N97W 25SESE
Location ID: 336393



Location from Northeast corner



Location from Northwest corner