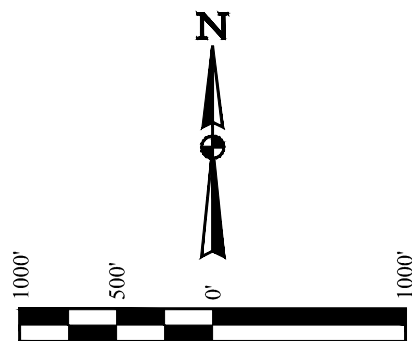


LEGEND:

- = PROPOSED WELLHEAD.
- ◆ = TOP PRODUCTION ZONE.
- = TARGET BOTTOM HOLE.
- ▲ = SECTION CORNERS LOCATED. (NAD 83)
- △ = SECTION CORNERS RE-ESTABLISHED. (NOT SET ON GROUND). (NAD 83)

NOTE:

Distances referenced on plat to section lines are perpendicular.



T3S, R65W, 6th P.M.

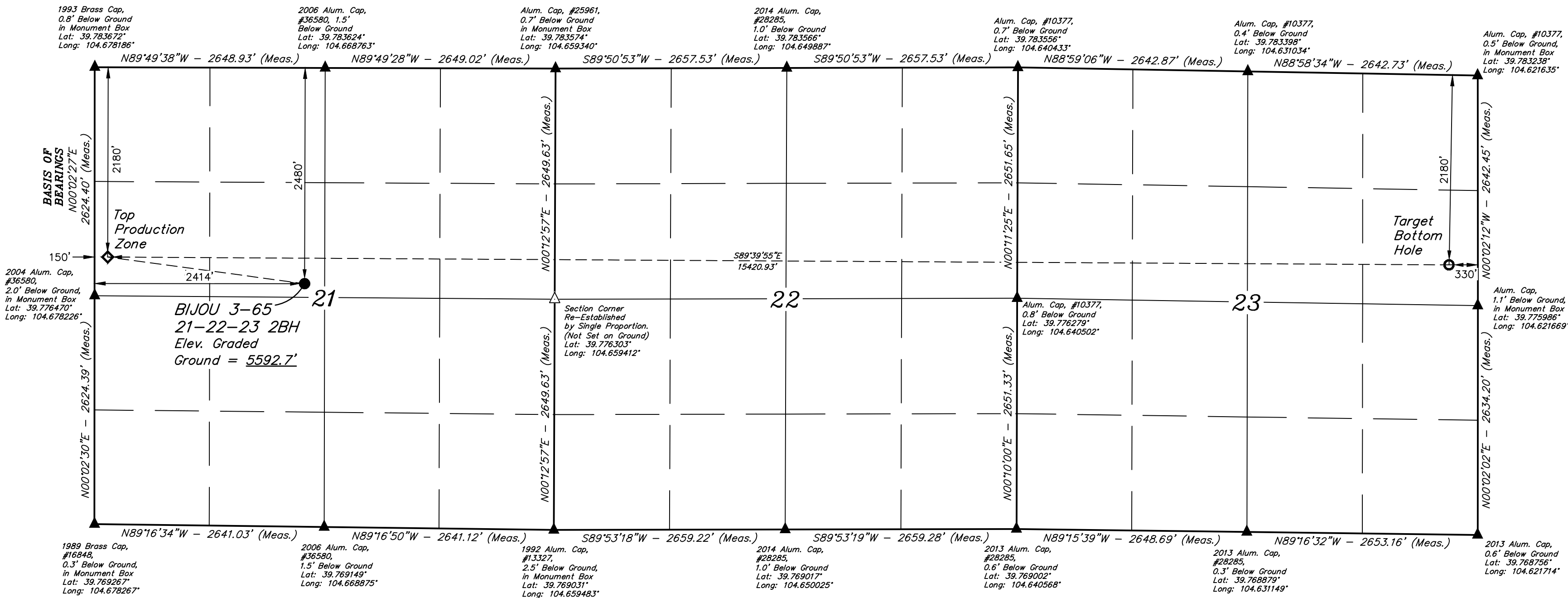
CRESTONE PEAK
RESOURCES OPERATING LLC

BIJOU 3-65 21-22-23 2BH
SE 1/4 NW 1/4, SECTION 21, T3S, R65W, 6th P.M.
ADAMS COUNTY, COLORADO

BASIS OF ELEVATION

OPUS SOLUTION GENERATED NAVD 88

LINE TABLE		
LINE	DIRECTION	LENGTH
L1	N82°17'34"W	2284.24'



CERTIFICATE OF SURVEY
THIS IS TO CERTIFY THAT THE ABOVE DESCRIBED SURVEY WAS MADE BY ME OR UNDER MY SUPERVISION AND THAT THE SAME ARE TRUE AND CORRECT TO THE BEST OF MY KNOWLEDGE AND BELIEF.

REGISTERED LAND SURVEYOR
REGISTRATION NO. 28285
STATE OF COLORADO



UELS, LLC
Corporate Office * 85 South 200 East
Vernal, UT 84078 * (435) 789-1017

PDOP = 1.9

NAD 83 (SURFACE HOLE LOCATION)	NAD 83 (TOP PRODUCTION ZONE)	NAD 83 (TARGET BOTTOM HOLE)
LATITUDE = 39°46'36.56" (39.776823°)	LATITUDE = 39°46'39.67" (39.77686°)	LATITUDE = 39°46'38.19" (39.777274°)
LONGITUDE = -104°40'10.70" (-104.669638°)	LONGITUDE = -104°40'39.67" (-104.677686°)	LONGITUDE = -104°37'22.21" (-104.622837°)
STATE PLANE NAD 83 (CO. NORTH)	STATE PLANE NAD 83 (CO. NORTH)	STATE PLANE NAD 83 (CO. NORTH)
N: 1162642.73' E: 3233386.64'	N: 1162936.15' E: 3231121.90'	N: 1162933.64' E: 3246538.98'



UELS, LLC
Corporate Office * 85 South 200 East
Vernal, UT 84078 * (435) 789-1017

SURVEYED BY	JAYSEN CHILDERS	07-03-23	SCALE
DRAWN BY	L.K.	09-18-23	1" = 1000'

WELL LOCATION PLAT