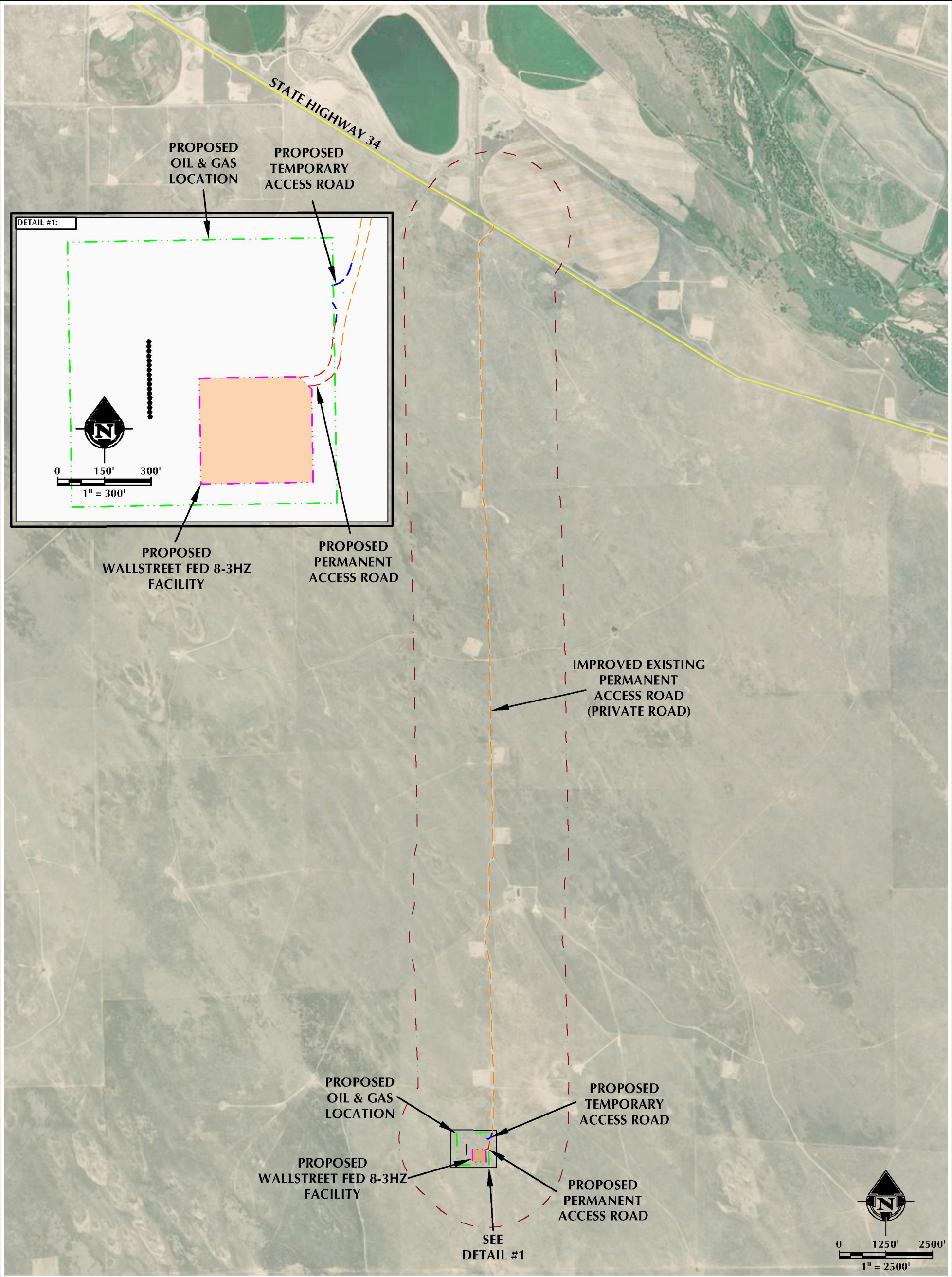


ACCESS MAP

WALLSTREET FED 8-3HZ

SE1/4 NE1/4 SECTION 3, TOWNSHIP 3 NORTH, RANGE 63 WEST, 6TH P.M., WELD COUNTY, COLORADO



LEGEND			INTERSECTION OF IMPROVED ACCESS ROAD AND STATE HIGHWAY 34			INTERSECTION OF TEMPORARY ACCESS ROAD AND IMPROVED ACCESS ROAD		INTERSECTION OF PERMANENT ACCESS ROAD AND IMPROVED ACCESS ROAD	
●	PROPOSED WELL	---	2000' ACCESS BUFFER	■	RESIDENTIAL BUILDING UNIT				
---	PROPOSED PERMANENT ACCESS ROAD	---	RESIDENTIAL BUILDING UNIT	■	NON-RESIDENTIAL BUILDING UNIT				
---	IMPROVED PERMANENT ACCESS ROAD	---	PROPOSED FACILITY PAD	■					
---	PROPOSED TEMPORARY ACCESS ROAD	---							
---	PUBLIC ROAD	---							
---	PROPOSED OIL & GAS LOCATION	---							

LATITUDE: 40.324586°  
LONGITUDE: -104.413859°

LATITUDE: 40.257590°  
LONGITUDE: -104.415324°

LATITUDE: 40.256836°  
LONGITUDE: -104.415482°



LOVELAND OFFICE  
6706 South Franklin Avenue  
Loveland, Colorado 80538  
Phone: 970-776-4331

SHERIDAN OFFICE  
1095 Saberton Avenue  
Sheridan, Wyoming 82801  
Phone: 307-674-0609

DATE SURVEYED: 9/27/23  
DATE: 11/17/23  
DRAFTER: AMPZ  
REVISED: 11/30/23

DATA SOURCES & NOTES:  
- AERIAL COURTESY OF NAIP.

PREPARED FOR:  
Kerr-McGee Oil & Gas Onshore LP