

WELL NAME:	C/F
MIDNIGHT 27-1HZ	C3.7
MIDNIGHT 27-2HZ	C3.9
MIDNIGHT 27-3HZ	C4.0
MIDNIGHT 27-4HZ	C4.0
MIDNIGHT 27-5HZ	C4.0
MIDNIGHT 27-6HZ	C4.2
MIDNIGHT 27-7HZ	C4.1
MIDNIGHT 27-8HZ	C4.3
MIDNIGHT 27-9HZ	C4.2
MIDNIGHT 27-10HZ	C4.1
MIDNIGHT 27-11HZ	C4.3
MIDNIGHT 27-12HZ	C4.4
MIDNIGHT 27-13HZ	C4.4
MIDNIGHT 27-14HZ	C4.5
MIDNIGHT 27-15HZ	C4.7
MIDNIGHT 27-16HZ	C5.0
MIDNIGHT 27-17HZ	C5.0

- NOTES:
- AT THE TIME OF FILING THIS APPLICATION, PIPELINE AND UTILITY CORRIDORS WILL DISTURB APPROXIMATELY 135.83 ACRES FOR DEVELOPMENT OF THE NINE LOCATIONS INCLUDED IN THIS PROPOSED FILLY OGDG AND COLT OGDG IN THE BRONCO CAP. THE ENTIRE PIPELINE AND UTILITY CORRIDORS MUST BE CONSTRUCTED TO SUPPORT PRODUCTION FROM THIS OGDG.
 - AT THE TIME OF FILING THIS APPLICATION, THE IMPROVED EXISTING PERMANENT PRIVATE ACCESS ROAD WILL DISTURB APPROXIMATELY 31.22 ACRES AND BE UTILIZED FOR THE DEVELOPMENT OF THE NINE LOCATIONS INCLUDED IN THIS PROPOSED FILLY OGDG AND COLT OGDG IN THE BRONCO CAP. THE NEW ACCESS ROAD DISTURBANCE ACREAGE LISTED BELOW IS ONLY FOR THE MIDNIGHT 1-27HZ LOCATION.
 - EXISTING UTILITIES DISPLAYED ON THE GRADING PLAN ARE FOR REFERENCE PURPOSES ONLY. PRIOR TO CONSTRUCTION OR EARTHWORK, CONTRACTOR WILL BE RESPONSIBLE TO CALL FOR LOCATES: (800) 922-1987
 - DIVERSION DITCH AND/OR BERM TO BE CONSTRUCTED AROUND THE ENTIRE PAD LOCATION. BERM SECTIONS TO BE COMPACTED IN ACCORDANCE WITH STANDARD CONSTRUCTION PRACTICES.
 - CENTER OF WELL PAD REFERENCED BELOW CORRESPONDS TO THE SURFACE LOCATION OF THE MIDNIGHT 27-9HZ WELL.
 - FLAT GRADED AREA TO BE RECLAIMED DURING INTERIM RECLAMATION.
 - CONTOURS DISPLAYED ARE GENERATED USING SURFACE INCLUDING PLATING MATERIAL. PLATING TO BE PLACED FOR STRONGBACK MATERIAL AND ACROSS ENTIRE GRADED PAD AT 8" DEPTH.

MIDNIGHT 1-27HZ CONSTRUCTION LAYOUT DRAWING - PLAN VIEW

QUANTITIES AND DESIGN PARAMETERS	PAD QUANTITIES
EXISTING GRADE @ CENTER OF PAD = 4791.0'	TOTAL CUT FOR PAD = 77,488 C.Y.
FINISHED GRADE ELEVATION = 4786.8' (WITH PLATING)	TOTAL FILL FOR PAD = 77,488 C.Y.
CUT/FILL SLOPES = 3:1	TOPSOIL @ 6" DEPTH = 9,710 C.Y.
SHRINKAGE FACTOR = 1.10	STRONGBACK PLATING MATERIAL = 2,205 C.Y.
SWELL FACTOR = 1.00	PLATING MATERIAL @ 8" DEPTH = 12,776 C.Y.
GRADED PAD SURFACE AREA = 9.84 ACRES	TOTAL PLATING MATERIAL = 14,981 C.Y.
TOTAL PAD AREA = 12.04 ACRES	TOTAL DISTURBANCE AREA
TOTAL FENCED AREA = 16.60 ACRES	OIL & GAS LOCATION = 16.60 ACRES
PROPOSED OIL & GAS LOCATION = 16.60 ACRES	WORKING PAD SURFACE = 9.84 ACRES
	IMPROVED ACCESS ROAD = SEE NOTE 2
	NEW ACCESS ROAD = 0.54 ACRES
	PIPELINE/UTILITY CORRIDOR = SEE NOTE 1

LEGEND

- EXISTING WELL LOCATION
- PROPOSED WELL LOCATION
- EXISTING CONTOURS (2' INTERVAL)
- PROPOSED CONTOURS (2' INTERVAL)
- EPL
- EXISTING PIPELINE
- WORKING PAD SURFACE
- PROPOSED SOUND MITIGATION
- EXISTING FENCE
- PROPOSED FENCE
- DIVERSION DITCH AND/OR BERM

0 50' 100' 1" = 100'

2' CONTOURS

SCALE: 1"=100' DATE: 11/20/23 SHEET NO: 1 OF 1

REVISED: SRS 12/13/23

CONSTRUCTION LAYOUT DRAWING - PLAN VIEW

MIDNIGHT 27-1HZ, MIDNIGHT 27-2HZ, MIDNIGHT 27-3HZ, MIDNIGHT 27-4HZ, MIDNIGHT 27-5HZ, MIDNIGHT 27-6HZ, MIDNIGHT 27-7HZ, MIDNIGHT 27-8HZ, MIDNIGHT 27-9HZ, MIDNIGHT 27-10HZ, MIDNIGHT 27-11HZ, MIDNIGHT 27-12HZ, MIDNIGHT 27-13HZ, MIDNIGHT 27-14HZ, MIDNIGHT 27-15HZ, MIDNIGHT 27-16HZ & MIDNIGHT 27-17HZ

LOCATED IN SECTION 27, T4N, R63W, 6TH P.M.

WELD COUNTY, COLORADO

Kerr-McGee Oil & Gas Onshore LP

1099 18th Street

Denver, Colorado 80202

609 CONSULTING, LLC

LOVELAND OFFICE

6706 North Franklin Avenue

Loveland, Colorado 80538

Phone 970-776-4331

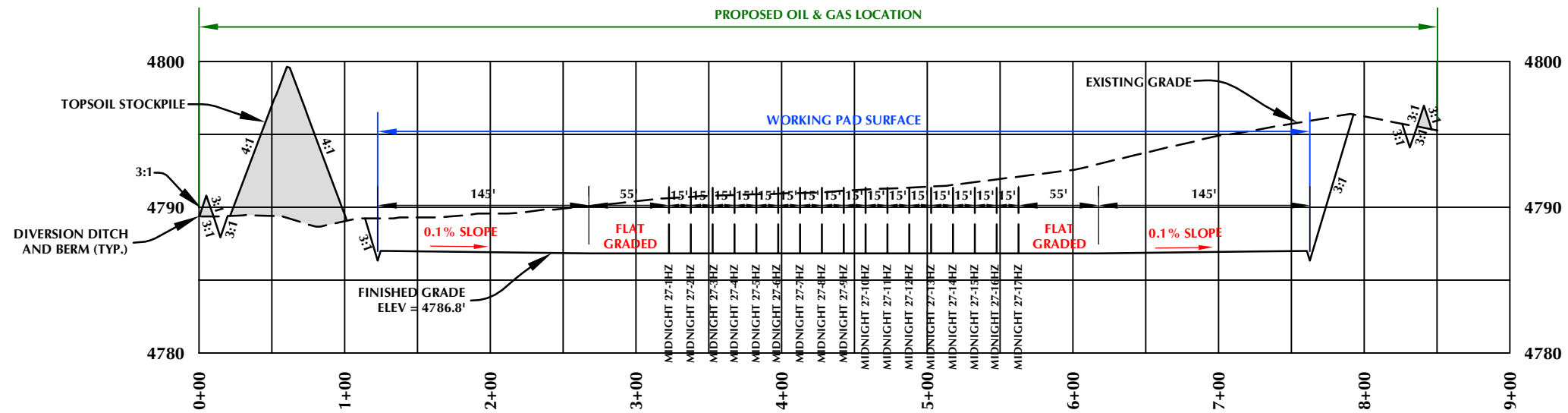
SHERIDAN OFFICE

1095 Saberton Avenue

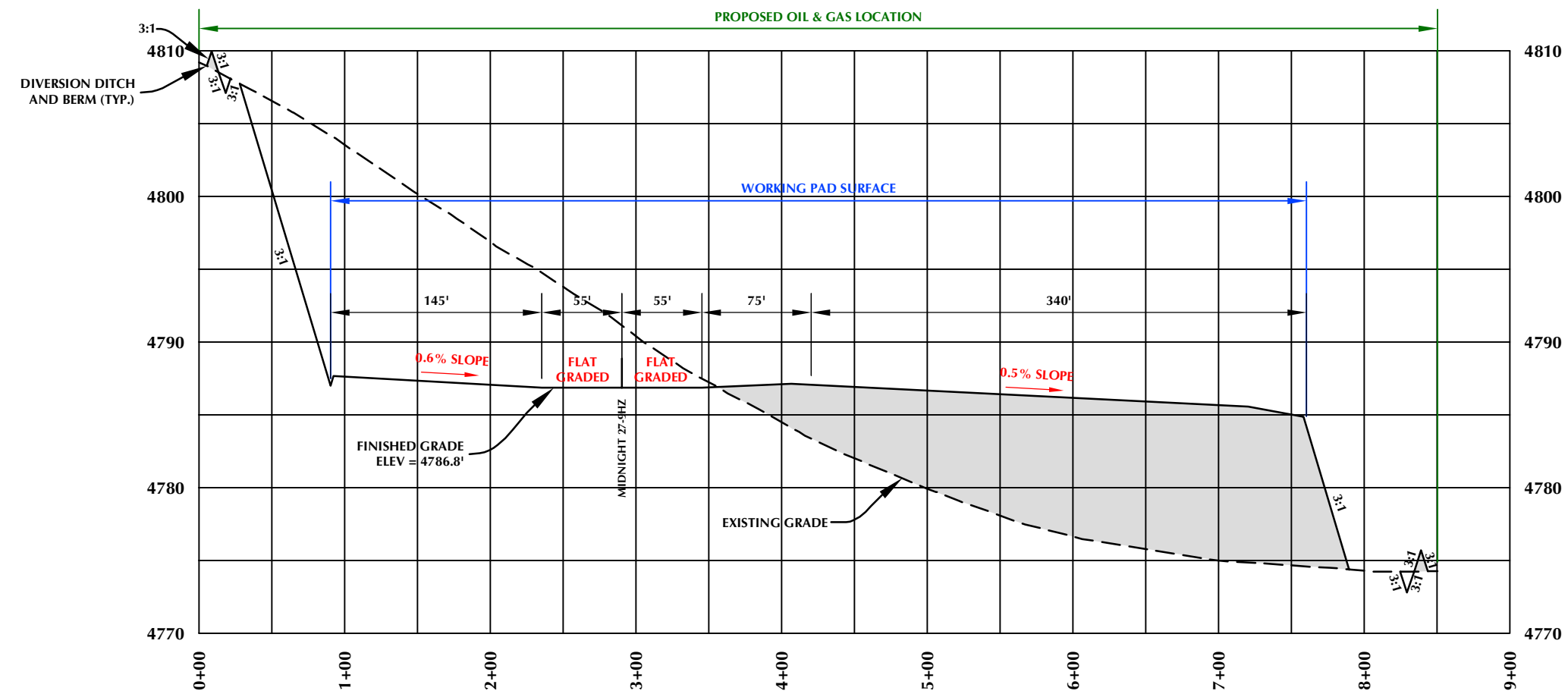
Sheridan, Wyoming 82801

Phone 307-674-0609

K:\ANDAKO\2017\197_CERVL_RANCH_T4N_R63W\DWG\03_MIDNIGHT\03_MIDNIGHT.dwg, 11/21/2023 6:25:07 PM, sundberg



CROSS SECTION A-A'



CROSS SECTION B-B'

MIDNIGHT 1-27HZ

MIDNIGHT 27-1HZ, MIDNIGHT 27-2HZ,
MIDNIGHT 27-3HZ, MIDNIGHT 27-4HZ, MIDNIGHT 27-5HZ,
MIDNIGHT 27-6HZ, MIDNIGHT 27-7HZ, MIDNIGHT 27-8HZ,
MIDNIGHT 27-9HZ, MIDNIGHT 27-10HZ, MIDNIGHT 27-11HZ,
MIDNIGHT 27-12HZ, MIDNIGHT 27-13HZ, MIDNIGHT 27-14HZ,
MIDNIGHT 27-15HZ, MIDNIGHT 27-16HZ & MIDNIGHT 27-17HZ
LOCATED IN SECTION 27, T4N, R63W, 6TH P.M.
WELD COUNTY, COLORADO

CONSTRUCTION LAYOUT DRAWING - CROSS SECTIONS

Kerr-McGee Oil &
Gas Onshore LP
1099 18th Street
Denver, Colorado 80202



LOVELAND OFFICE
6706 North Franklin Avenue
Loveland, Colorado 80538
Phone 970-776-4331
SHERIDAN OFFICE
1095 Saberton Avenue
Sheridan, Wyoming 82801
Phone 307-674-0609

HORIZONTAL 0 50' 100' 1" = 100'
VERTICAL 0 5' 10' 1" = 10'

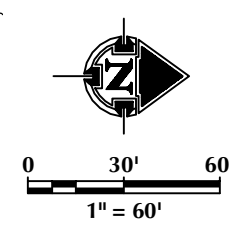
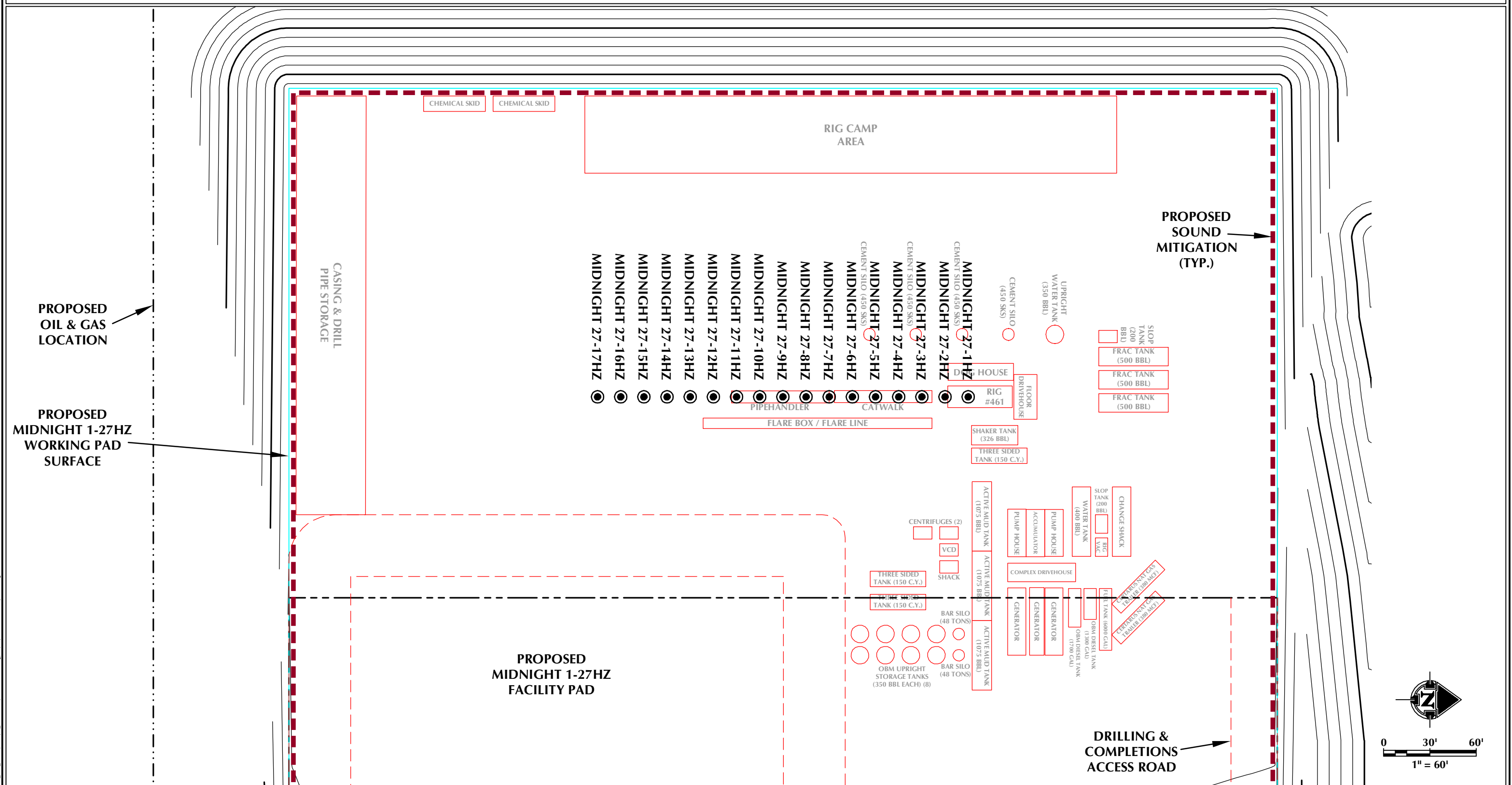
SCALE: 1"=100' DATE: 11/20/23 SHEET NO:

REVISED:

1

1 OF 1

PRELIMINARY RIG LAYOUT DRAWING
MIDNIGHT 1-27HZ
E1/2 NE1/4 SECTION 27, TOWNSHIP 4 NORTH, RANGE 63 WEST, 6TH P.M., WELD COUNTY, COLORADO



LEGEND <ul style="list-style-type: none">PROPOSED WELLEXISTING WELLPROPOSED OIL & GAS LOCATIONPROPOSED WORKING PAD SURFACEPROPOSED 2' CONTOUR	<p>609 CONSULTING, LLC</p> <p>LOVELAND OFFICE 6706 North Franklin Avenue Loveland, Colorado 80538 Phone 970-776-4331</p> <p>SHERIDAN OFFICE 1095 Saberton Avenue Sheridan, Wyoming 82801 Phone 307-674-0609</p>	<p>Kerr-McGee Oil & Gas Onshore LP</p> <p>1099 18th Street Denver, Colorado 80202</p>	<p>SCALE: 1" = 60'</p> <p>DATE SURVEYED: 9/27/23</p> <p>DATE: 11/20/23</p> <p>DRAFTER: GLK</p> <p>REVISED:</p>	<p>NOTE:</p> <p>1. RIG PROFILE IS APPROXIMATE AND SUBJECT TO MODIFICATION DUE TO SPECIFIC CIRCUMSTANCES.</p>
--	--	--	--	---

K:\ANDARQ\2017\2017_197_CERVO_RANCH_TN_R63WDWG\3_MIDNIGHT103 MIDNIGHT.dwg, 11/21/2023 6:36:06 PM, saundberg

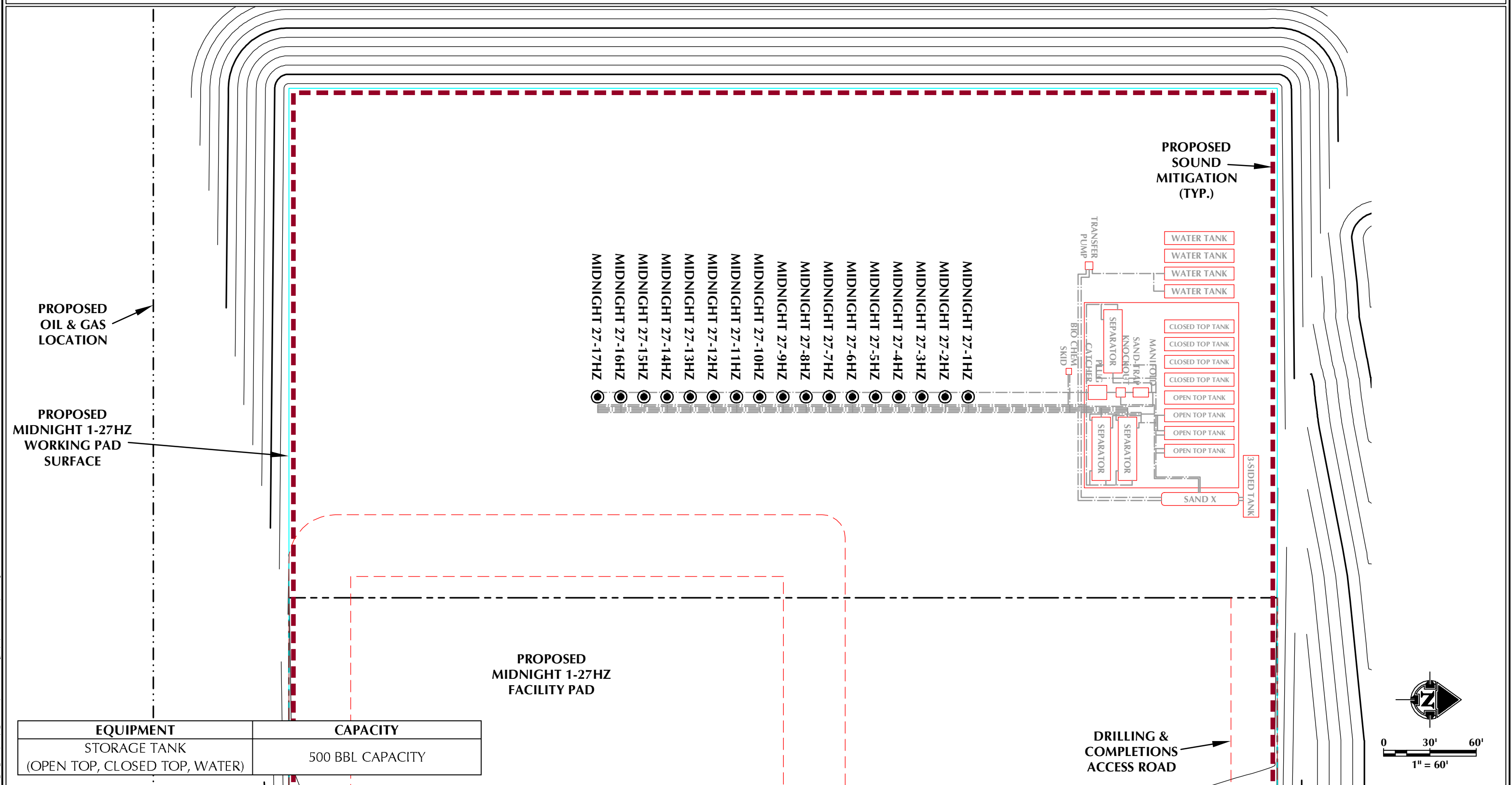
MIDNIGHT 1-27HZ



PRELIMINARY FLOWBACK EQUIPMENT LAYOUT DRAWING

MIDNIGHT 1-27HZ

E1/2 NE1/4 SECTION 27, TOWNSHIP 4 NORTH, RANGE 63 WEST, 6TH P.M., WELD COUNTY, COLORADO



LEGEND

- PROPOSED WELL
- EXISTING WELL
- PROPOSED OIL & GAS LOCATION
- PROPOSED WORKING PAD SURFACE
- PROPOSED 2' CONTOUR
- PROPOSED PIPELINE

EQUIPMENT

STORAGE TANK
(OPEN TOP, CLOSED TOP, WATER)

CAPACITY

500 BBL CAPACITY

609

CONSULTING, LLC

LOVELAND OFFICE
6706 North Franklin Avenue
Loveland, Colorado 80538
Phone 970-776-4331

SHERIDAN OFFICE
1095 Saberton Avenue
Sheridan, Wyoming 82801
Phone 307-674-0609

**Kerr-McGee Oil &
Gas Onshore LP**

1099 18th Street
Denver, Colorado 80202

SCALE: 1" = 60'

DATE SURVEYED: 9/27/23

DATE: 11/20/23

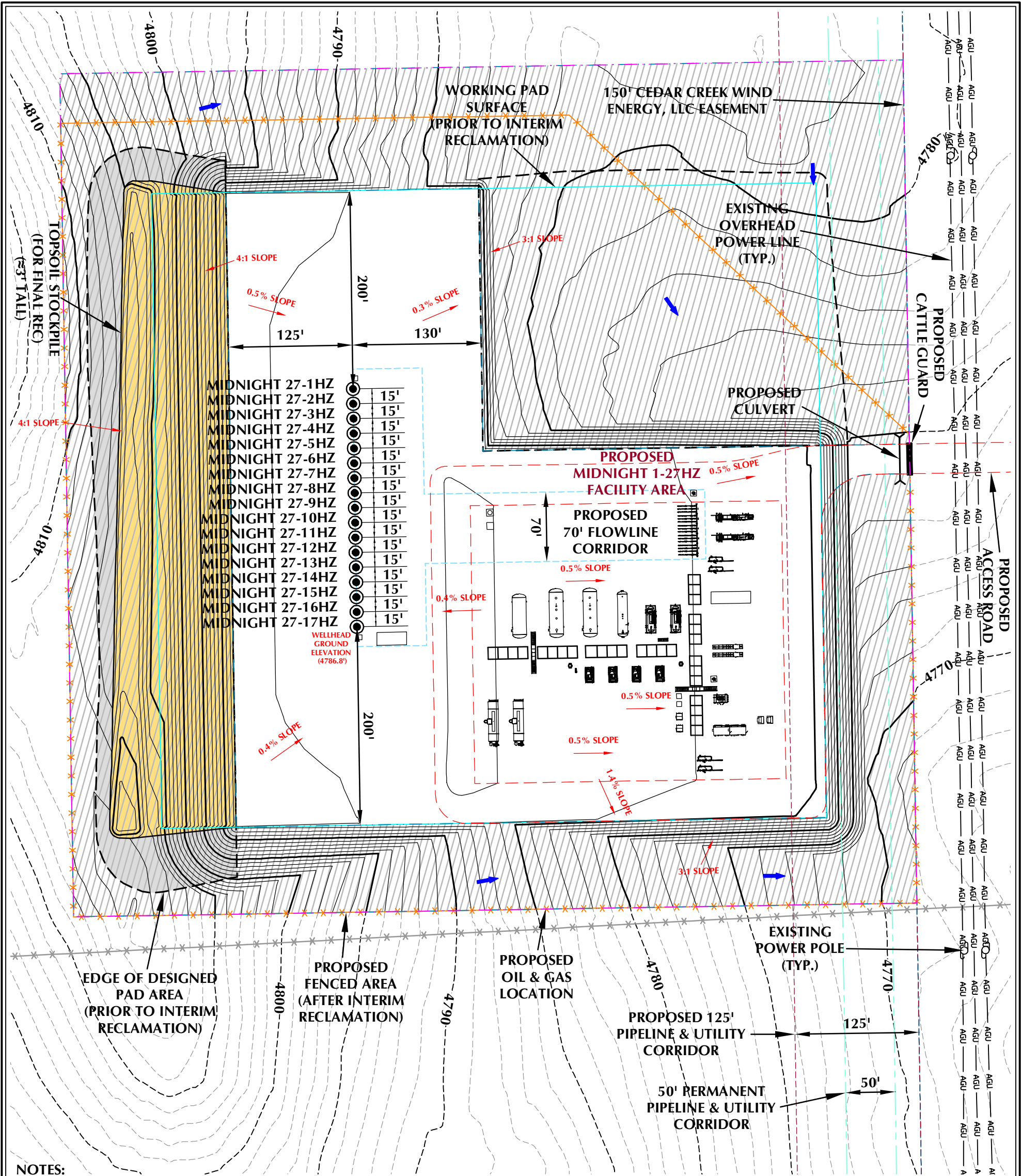
DRAFTER: GLK

REVISED:

NOTE:

-WELLHEADS WILL REMAIN PERMANENTLY AFTER FLOWBACK IS COMPLETE. ALL OTHER EQUIPMENT DISPLAYED IS TEMPORARY AND WILL BE REMOVED FOLLOWING FLOWBACK OPERATIONS.

K:\ANDARQ\2017\2017_197_CERVO_RANCH_TN_R63W\DWG\3_MIDNIGHT103_MIDNIGHT.dwg, 11/21/2023 7:08:58 PM, saundberg



- NOTES:
1. AT THE TIME OF FILING THIS APPLICATION, PIPELINE AND UTILITY CORRIDORS WILL DISTURB APPROXIMATELY 135.83 ACRES FOR DEVELOPMENT OF THE NINE LOCATIONS INCLUDED IN THIS PROPOSED FILLY OGDG AND COLT OGDG IN THE BRONCO CAP. THE ENTIRE PIPELINE AND UTILITY CORRIDORS MUST BE CONSTRUCTED TO SUPPORT PRODUCTION FROM THIS OGDG.
 2. EXISTING UTILITIES DISPLAYED ON THE GRADING PLAN ARE FOR REFERENCE PURPOSES ONLY. PRIOR TO CONSTRUCTION OR EARTHWORK, CONTRACTOR WILL BE RESPONSIBLE TO CALL FOR LOCATES: (800) 922-1987
 3. RECLAIMED AREA WILL BE RE-SEEDING AND RE-VEGETATED DURING INTERIM RECLAMATION.

MIDNIGHT 1-27HZ FACILITY LAYOUT DRAWING

QUANTITIES AND DESIGN PARAMETERS

SHRINKAGE FACTOR = 1.00
SWELL FACTOR = 1.00
PROPOSED OIL & GAS LOCATION = 16.60 ACRES
AREA RECLAIMED DURING
INTERIM RECLAMATION = 9.85 ACRES
TOTAL PAD AREA AFTER
INTERIM RECLAMATION = 6.75 ACRES
TOTAL FENCED AREA AFTER
INTERIM RECLAMATION = 14.36 ACRES

PAD QUANTITIES

TOTAL CUT = 33,704 C.Y.
TOTAL FILL = 33,704 C.Y.
TOTAL TOPSOIL @ 6" DEPTH
FROM CONSTRUCTION PHASE = 9,710 C.Y.
TOPSOIL USED FOR INTERIM REC = 4,265 C.Y.
TOPSOIL STORED FOR FINAL REC = 5,445 C.Y.

LAND USE: RANGELAND

LEGEND

- EXISTING WELL LOCATION
- PROPOSED WELL LOCATION
- EXISTING CONTOURS (1' INTERVAL)
- PROPOSED CONTOURS (1' INTERVAL)
- EPL
- EXISTING PIPELINE
- PROPOSED FLOWLINE
- EXISTING FENCE
- RECLAMATION AREA
- PLANNED FLOW DIRECTION
- WORKING PAD SURFACE (WPS)



HORIZONTAL 0 50' 100' 1" = 100'

1' CONTOURS

SCALE: 1"=100' DATE: 11/20/23 SHEET NO:

REVISED: SRS 12/13/23 1 1 OF 2

MIDNIGHT 1-27HZ

FACILITY LAYOUT DRAWING
MIDNIGHT 27-1HZ, MIDNIGHT 27-2HZ,
MIDNIGHT 27-3HZ, MIDNIGHT 27-4HZ, MIDNIGHT 27-5HZ,
MIDNIGHT 27-6HZ, MIDNIGHT 27-7HZ, MIDNIGHT 27-8HZ,
MIDNIGHT 27-9HZ, MIDNIGHT 27-10HZ, MIDNIGHT 27-11HZ,
MIDNIGHT 27-12HZ, MIDNIGHT 27-13HZ, MIDNIGHT 27-14HZ,
MIDNIGHT 27-15HZ, MIDNIGHT 27-16HZ & MIDNIGHT 27-17HZ
LOCATED IN SECTION 27, T4N, R63W, 6TH P.M.
WELD COUNTY, COLORADO

Kerr-McGee Oil &
Gas Onshore LP
1099 18th Street
Denver, Colorado 80202



LOVELAND OFFICE
6706 North Franklin Avenue
Loveland, Colorado 80538
Phone 970-776-4331

SHERIDAN OFFICE
1095 Saberton Avenue
Sheridan, Wyoming 82801
Phone 307-674-0609

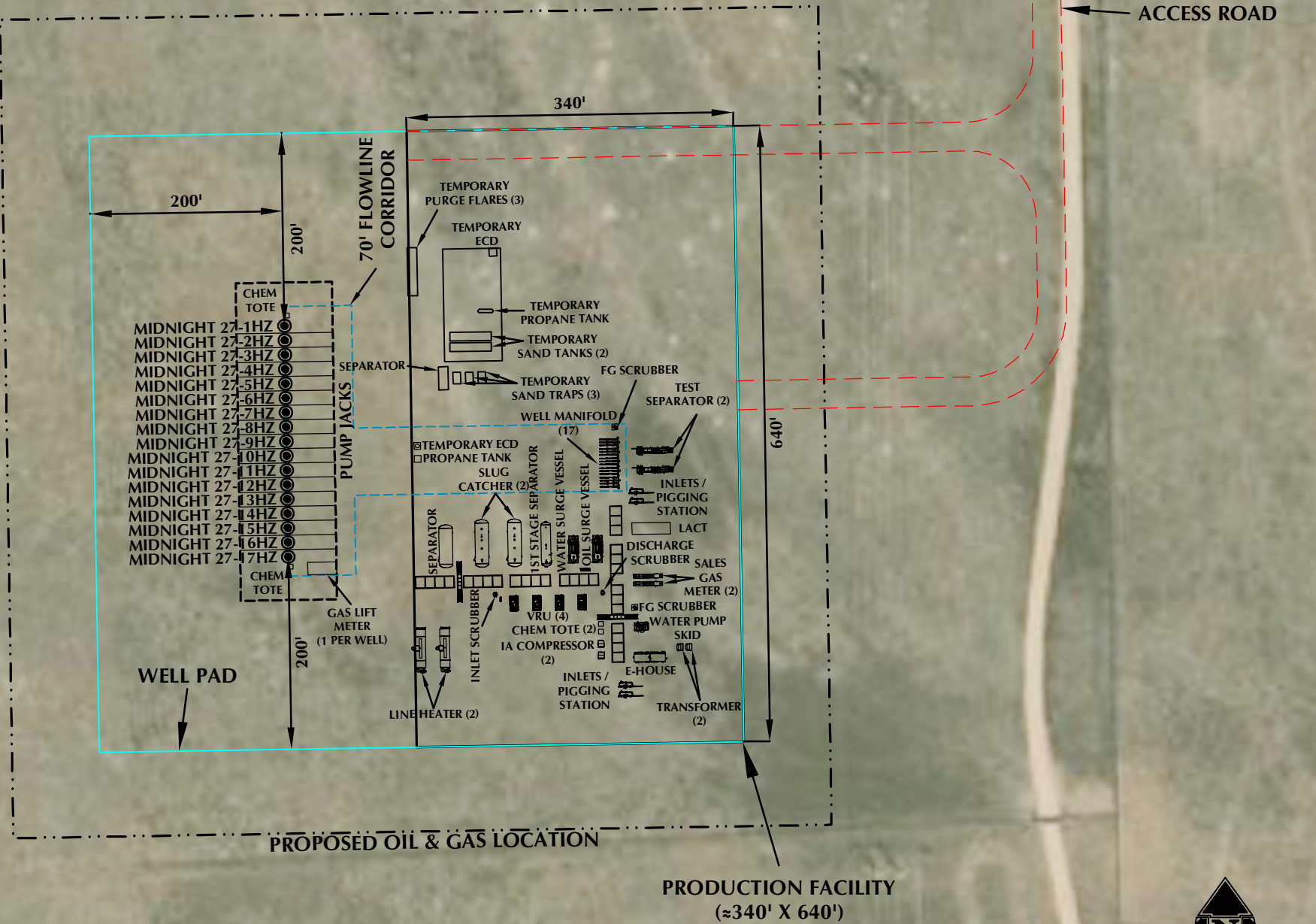
CONSULTING, LLC

DISTANCE FROM WORKING PAD SURFACE TO:

BUILDING	±4126' S
RESIDENTIAL BUILDING UNIT (RBU)	5280'+ NE
HIGH OCCUPANCY BUILDING UNIT (HOBU)	5280'+ SE
DESIGNATED OUTSIDE ACTIVITY AREA	5280'+ SW
PUBLIC ROAD	5280'+ N
ABOVE GROUND UTILITY	±147' E
RAILROAD	5280'+ N
PROPERTY LINE	±381' E
SCHOOL FACILITY	5280'+ NW
CHILD CARE CENTER	5280'+ NW
DISPROPORTIONATELY IMPACTED (DI) COMMUNITY	±0'
RBU, HOBU, OR SCHOOL FACILITY WITHIN A DI COMMUNITY	5280'+ NE

DISTANCE FROM NEAREST WELL TO:

SEPARATOR	±157' E
TEMPORARY SAND TANK	±172' E
TEMPORARY ECD	±133' E
TEMPORARY PURGE FLARE	±132' E
WORKING PAD SURFACE	±200' N



LEGEND:			
	PROPOSED WELL		PROPOSED OIL & GAS LOCATION
	ROAD PROPOSED		PROPOSED FLOWLINE CORRIDOR
	WORKING PAD SURFACE		

- NOTES:**
- EQUIPMENT PLACEMENT IS APPROXIMATE AND SUBJECT TO MINOR MODIFICATION DUE TO SPECIFIC CIRCUMSTANCES.
 - FLOWLINE CORRIDOR IS APPROXIMATE AND SUBJECT TO MINOR MODIFICATION DUE TO SPECIFIC CIRCUMSTANCES.

FACILITY COORDINATES:
LAT: 40.287451° LONG: -104.416611° (NAD83)

DATA SOURCES:
- AERIAL COURTESY OF NAIP.



LOVELAND OFFICE
6706 North Franklin Avenue
Loveland, Colorado 80538
Phone 970-776-4331

SHERIDAN OFFICE
1095 Saberton Avenue
Sheridan, Wyoming 82801
Phone 307-674-0609

**Kerr-McGee Oil &
Gas Onshore LP**
1099 18th Street
Denver, Colorado 80202

SCALE: 1" = 150'
DATE SURVEYED: 9/27/23
DATE: 11/20/23
DRAFTER: AMPZ
REVISED: 12/13/23

FACILITY LAYOUT DRAWING
MIDNIGHT 1-27HZ
LOCATED IN SECTION 27, T4N, R63W, 6TH P.M.
WELD COUNTY, COLORADO

