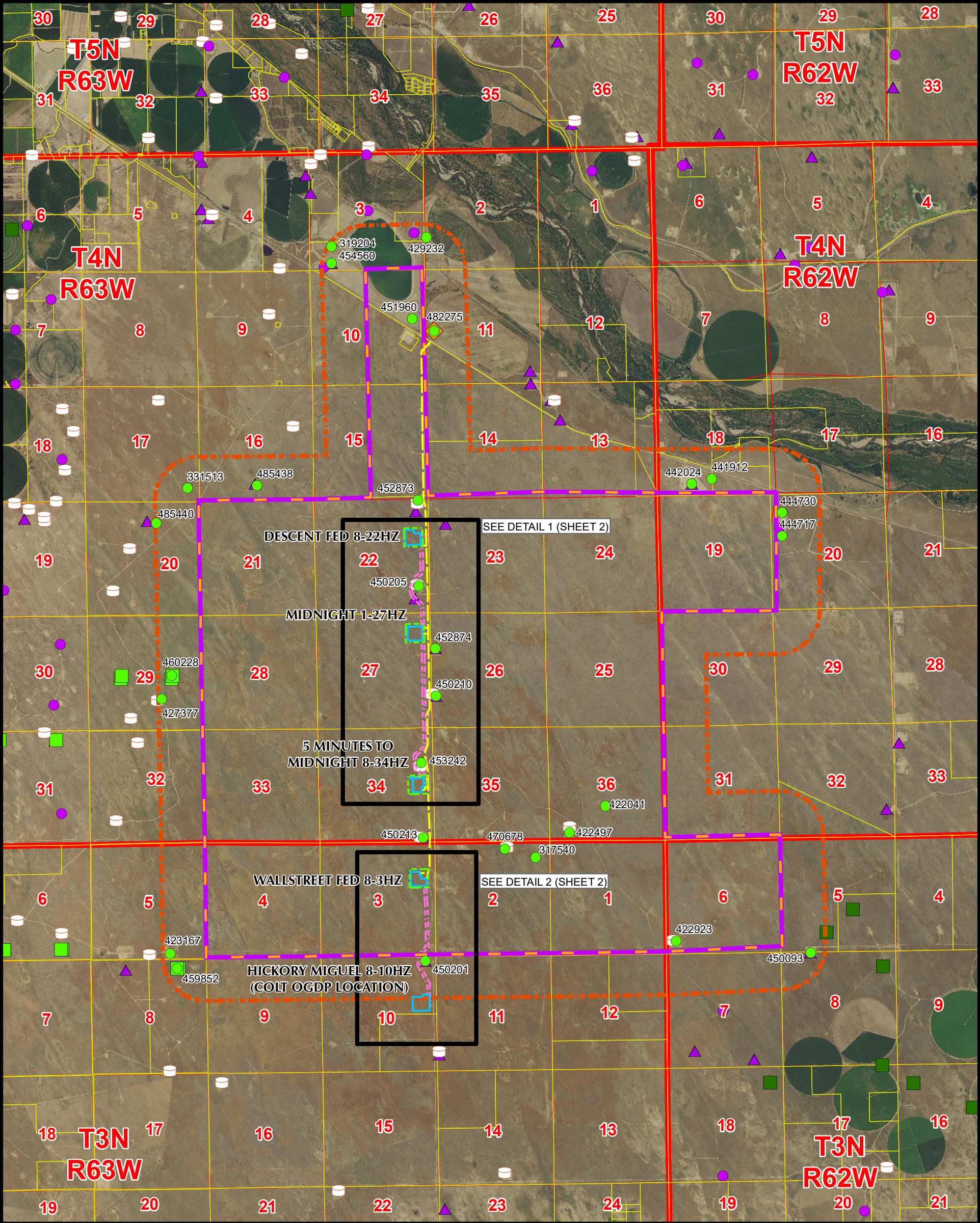


FILLY OGDG RELATED LOCATION & FLOWLINE MAP

DESCENT FED 8-22HZ, MIDNIGHT 1-27HZ, 5 MINUTES TO MIDNIGHT 8-34HZ & WALLSTREET FED 8-3HZ

SECTIONS 22, 27 & 34, TOWNSHIP 4 NORTH, RANGE 63 WEST &

SECTION 3, TOWNSHIP 3 NORTH, RANGE 63 WEST, 6TH P.M., WELD COUNTY, COLORADO



**Legend**

PROPOSED ACCESS ROAD	ACTIVE LOCATION
PROPOSED FLOWLINE CORRIDOR	VISIBLE LOCATION ON AERIAL NOT IN COGCC GIS
PROPOSED WORKING PAD SURFACE	PENDING LOCATION PERMIT (FORM 2A)
PROPOSED OIL & GAS LOCATION	APPROVED LOCATION PERMIT (FORM 2A)
PROPOSED OGDG BOUNDARY	APPROVED WELL PERMIT (FORM 2)
2000' BUFFER - PROPOSED OGDG BOUNDARY	PENDING WELL PERMIT (FORM 2)
PROPOSED MINERAL BOUNDARY	WELD OIL AND GAS LOCATION ASSESSMENT (WOGLA)
PARCEL BOUNDARY	CLOSED PIT
	TANK BATTERY

**Kerr-McGee Oil & Gas Onshore LP**

1099 18th Street  
Denver, Colorado 80202

**LOVELAND OFFICE**  
6706 North Franklin Avenue  
Loveland, Colorado 80538  
Phone 970-776-4331

**SHERIDAN OFFICE**  
1095 Saberton Avenue  
Sheridan, Wyoming 82801  
Phone 307-674-0609

**Consulting, LLC**

Drawn by: AK  
Revised:

Date: 1 Dec 2023  
Date:

1 Sheet of 3

K:\NADARKO\2017\2017\_197\_CERV\T4N\_R63W\GIS\FILLY\_OGDG\ALAMAP\FILLY\_OGDG\_FLOWLINE\_MAP.mxd 11/29/2023 3:40:04 PM

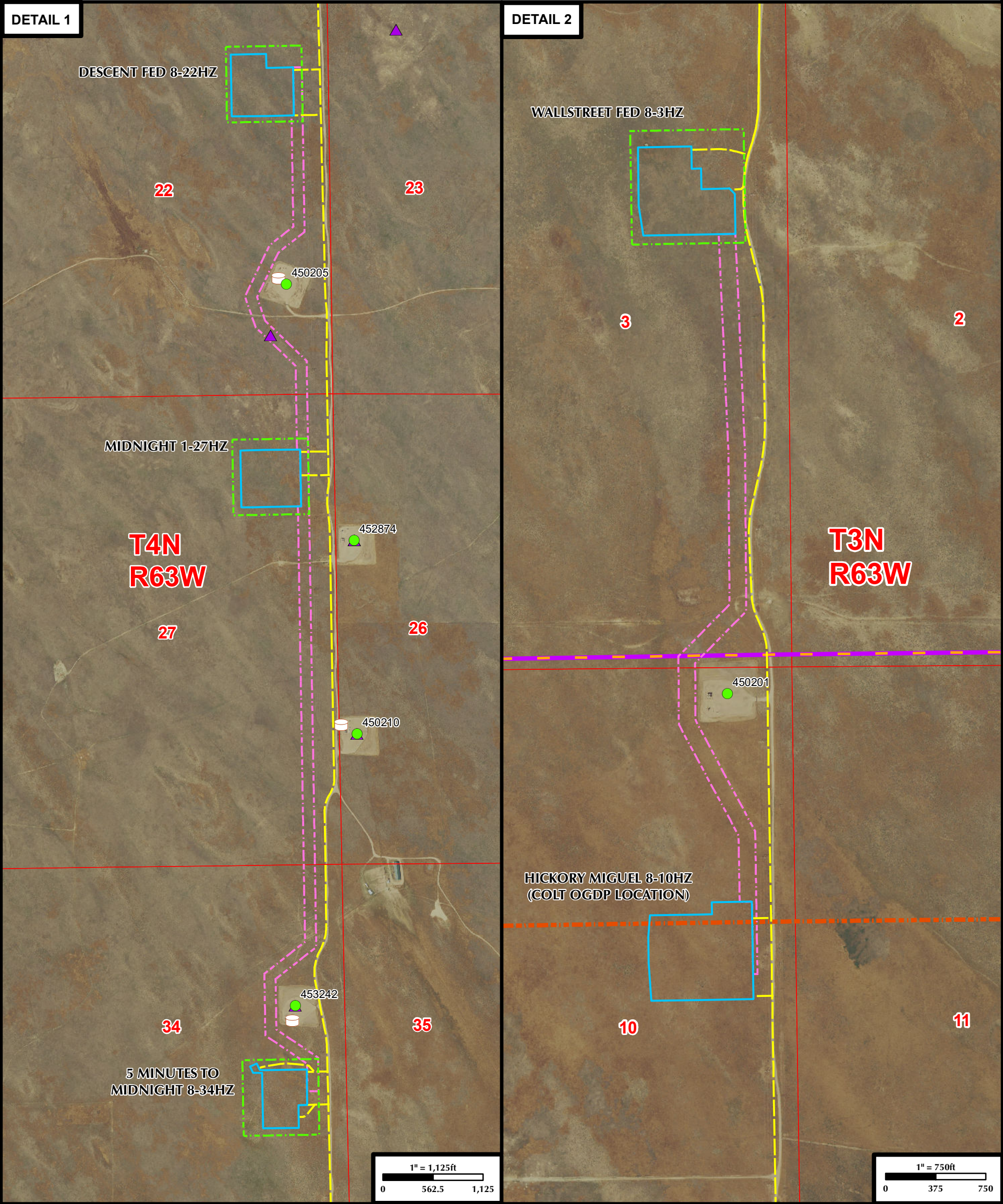


FILLY OGDG RELATED LOCATION & FLOWLINE MAP

DESCENT FED 8-22HZ, MIDNIGHT 1-27HZ, 5 MINUTES TO MIDNIGHT 8-34HZ & WALLSTREET FED 8-3HZ

SECTIONS 22, 27 & 34, TOWNSHIP 4 NORTH, RANGE 63 WEST &

SECTION 3, TOWNSHIP 3 NORTH, RANGE 63 WEST, 6TH P.M., WELD COUNTY, COLORADO



**Legend**

PROPOSED ACCESS ROAD

PROPOSED FLOWLINE CORRIDOR

PROPOSED OIL & GAS LOCATION

PROPOSED WORKING PAD SURFACE

ACTIVE LOCATION

WELD OIL AND GAS LOCATION ASSESSMENT (WOGLA)

TANK BATTERY

609

Consulting, LLC

LOVELAND OFFICE

6706 North Franklin Avenue

Loveland, Colorado 80538

Phone 970-776-4331

SHERIDAN OFFICE

1095 Saberton Avenue

Sheridan, Wyoming 82801

Phone 307-674-0609

Drawn by: AK

Revised:

Date: 1 Dec 2023

Date:

N

NAD83 CO-Nft

2

Sheet:

of

3



K:\NADARKO\2017\2017\_197\_CERVL\_RANCH\_T4N\_R63W\GIS\FILLY\_OGDP\ALAMAPSFILLY\_OGDP\FLOWLINE\_MAP\_TABLE\_1.mxd 11/29/2023 3:54:46 PM

FILLY OGDp RELATED LOCATION & FLOWLINE MAP  
DESCENT FED 8-22HZ, MIDNIGHT 1-27HZ, 5 MINUTES TO MIDNIGHT 8-34HZ & WALLSTREET FED 8-3HZ  
SECTIONS 22, 27 & 34, TOWNSHIP 4 NORTH, RANGE 63 WEST &  
SECTION 3, TOWNSHIP 3 NORTH, RANGE 63 WEST, 6TH P.M., WELD COUNTY, COLORADO

LOCATION ID	LOCATION NAME	LOCATION NUMBER	OPERATOR NAME
317540	STATE-63N63W	2NENE	BONANZA CREEK ENERGY OPERATING COMPANY LLC
319204	CROISSANT	1 PAD	BONANZA CREEK ENERGY OPERATING COMPANY LLC
331513	L F RANCH-64N63W	17SESE	NOBLE ENERGY INC
422041	FRENCH LAKE 4-63-36	1M	BONANZA CREEK ENERGY OPERATING COMPANY LLC
422497	FRENCH LAKE 4-63-36	1B	BONANZA CREEK ENERGY OPERATING COMPANY LLC
422923	FRENCH LAKE 3-62-6	1B	BONANZA CREEK ENERGY OPERATING COMPANY LLC
423167	GUTTERSEN	27N-5HZ	NOBLE ENERGY INC
427377	GUTTERSEN	SE-29 PAD	PDC ENERGY INC
429232	LATHAM 14-2	TANK BATTERY	BONANZA CREEK ENERGY OPERATING COMPANY LLC
441912	STATE SEVENTY HOLES CPF	24-18 PAD	BONANZA CREEK ENERGY OPERATING COMPANY LLC
442024	MIDDLEPARK	18	CONFLUENCE DJ LLC
444717	ANSCHUTZ EQUUS FARMS	4-62-20_21 SWNW	HIGHPOINT OPERATING CORPORATION
444730	ANSCHUTZ EQUUS FARMS	4-62-20_21 NWNW	HIGHPOINT OPERATING CORPORATION
450093	LOST CREEK	03N-62W-08-NW	VERDAD RESOURCES LLC
450201	LONGHORN	U-10 PAD	BONANZA CREEK ENERGY OPERATING COMPANY LLC
450205	MUSTANG	44-22 PAD	BONANZA CREEK ENERGY OPERATING COMPANY LLC
450210	MUSTANG	14-26	BONANZA CREEK ENERGY OPERATING COMPANY LLC
450213	MUSTANG	Y-34 PAD	BONANZA CREEK ENERGY OPERATING COMPANY LLC
451960	70 RANCH	10 EAST	CONFLUENCE DJ LLC
452873	MUSTANG	U-22	BONANZA CREEK ENERGY OPERATING COMPANY LLC
452874	MUSTANG	12-26 PAD	BONANZA CREEK ENERGY OPERATING COMPANY LLC
453242	MUSTANG	42-34	BONANZA CREEK ENERGY OPERATING COMPANY LLC
454560	70 RANCH	10 WEST	CONFLUENCE DJ LLC
459852	DD08-02	PAD	NOBLE ENERGY INC
460228	CC29-10	PAD	NOBLE ENERGY INC
470678	STATE-63N63W	2NENE	BONANZA CREEK ENERGY OPERATING COMPANY LLC
482275	BIGFOOT	11	CONFLUENCE DJ LLC
485438	CC16-24	PAD	NOBLE ENERGY INC
485440	CC20-18	PAD	NOBLE ENERGY INC

609

Consulting, LLC

Drawn by: AK

Revised:

LOVELAND OFFICE

6706 North Franklin Avenue

Loveland, Colorado 80538

Phone 970-776-4331

SHERIDAN OFFICE

1095 Saberton Avenue

Sheridan, Wyoming 82801

Phone 307-674-0609

Date: 1 Dec 2023

Date:

NAD83 CO-Nft

3 Sheet: 3

of