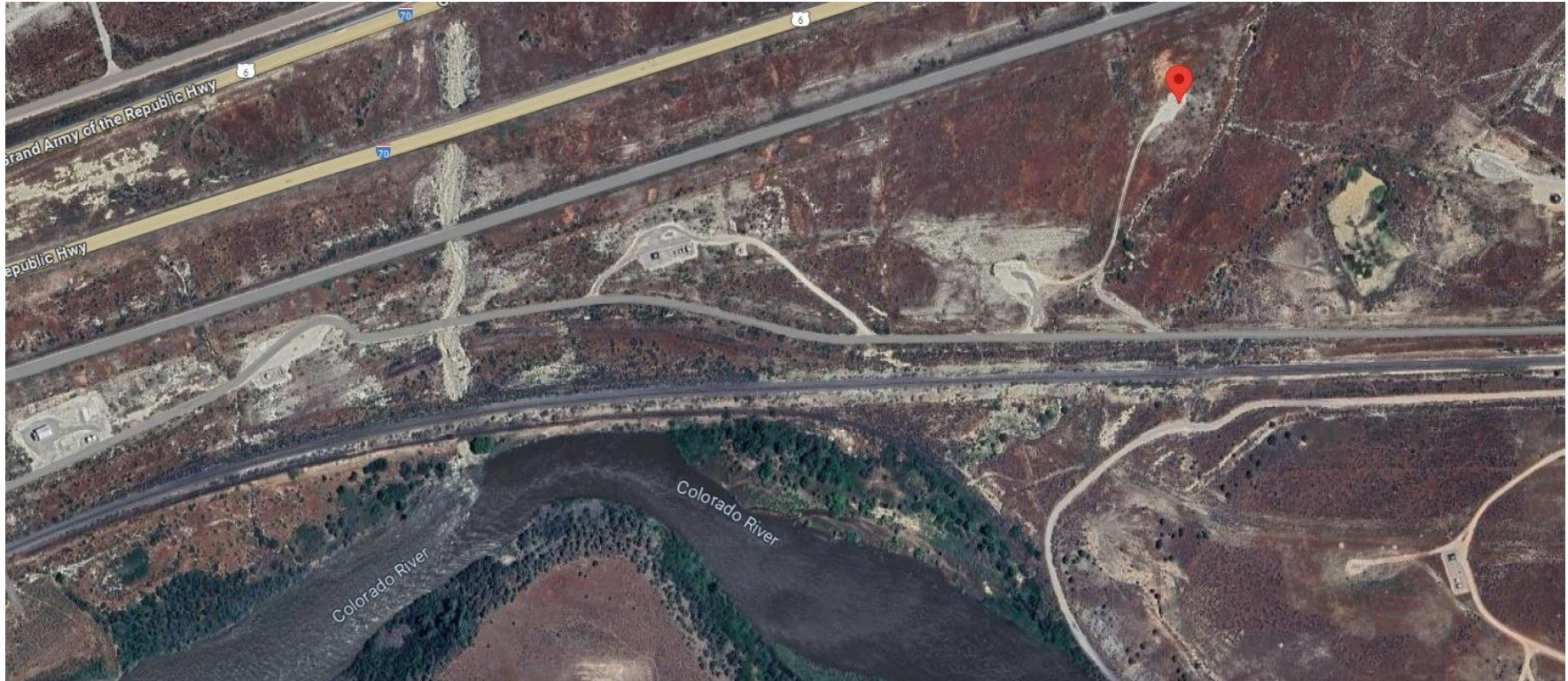


Storm Water Management and Erosion control
Location Name: TEP ROCKY MOUNTAIN LLC CLOUGH RMV 232-28 Pad
Location ID: 324163



Location Overview: Location is within High Priority/Density Habitat areas & in close proximity to NSO Habitat area & Bald Eagle Roost site. Location is approximately 472 yards from the Colorado River. Location is approximately 39 yards from a drainage that contributes to the river.

Section/Township/Range: 28 6S94W



COLORADO
Energy & Carbon Management
Commission
Department of Natural Resources

Storm water Management and Erosion control
Location Name: TEP ROCKY MOUNTAIN LLC CLOUGH RMV 232-28 Pad
Location ID: 324163



North West corner of location.



North East corner of location.



South West corner of location.



South East corner of location.

Storm water Management and Erosion control
Location Name: TEP ROCKY MOUNTAIN LLC CLOUGH RMV 232-28 Pad
Location ID: 324163



Photo # 7891 Ditch & Culvert need maintenance/erosion & transport of sediment onto lease road



Photo # 7892 Erosion & transport of sediment onto lease road

Storm water Management and Erosion control
Location Name: TEP ROCKY MOUNTAIN LLC CLOUGH RMV 232-28 Pad
Location ID: 324163



Photo # 7893 Erosion & transport of sediment onto lease road



Photo # 7894 Erosion & transport of sediment onto lease road

Storm water Management and Erosion control
Location Name: TEP ROCKY MOUNTAIN LLC CLOUGH RMV 232-28 Pad
Location ID: 324163



Photo # 7895 Erosion & transport of sediment onto lease road



Photo # 7896 Erosion & transport of sediment onto lease road