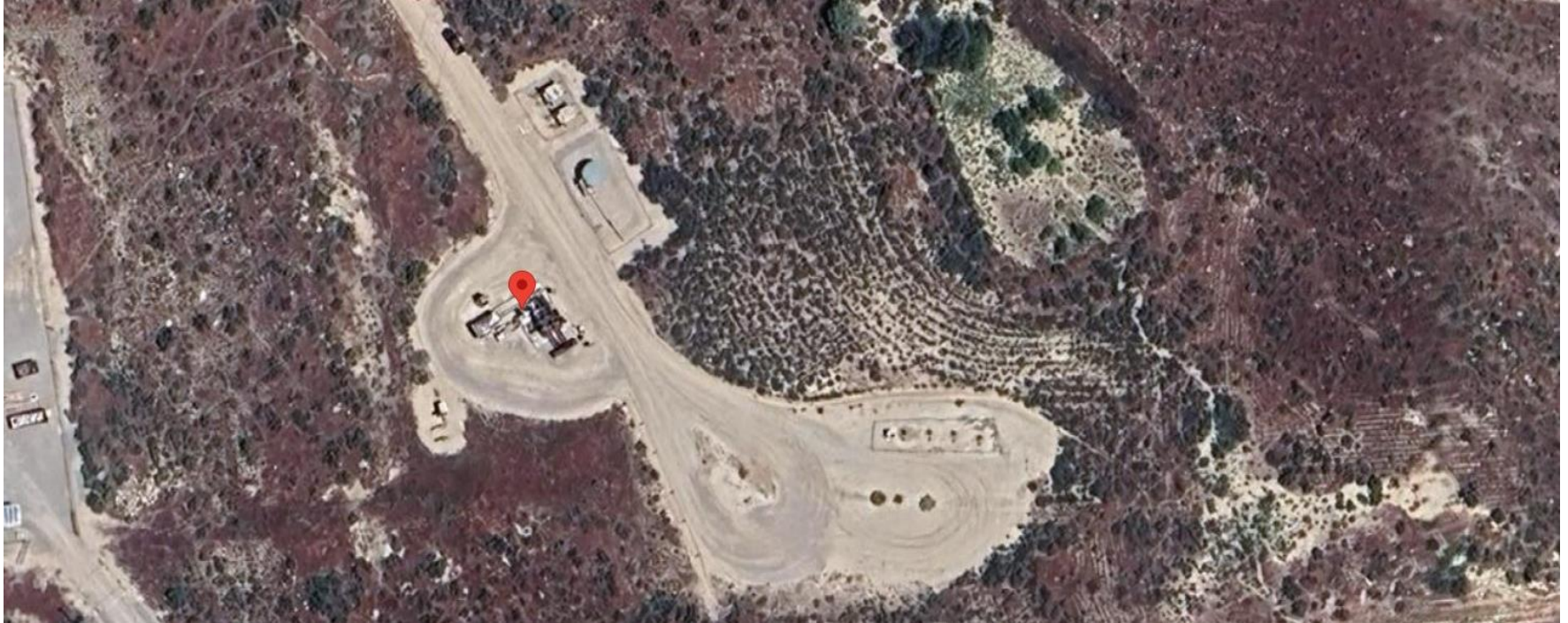


Storm Water Management and Erosion control
Location Name: TEP ROCKY MOUNTAIN LLC Wasatch Compressor Station
Facility # 467146



Location Overview: Location is within High Priority/Density/Black Bear Habitat areas/Bald Eagle Roost Site & in close proximity to NSO Habitat area. Location is within Rule 411a Surface Water Intermediate Buffer. Location is approximately 418 yards from Rule 411b Generalized External Buffer. Location is approximately 424 yards from the Colorado River.

Section/Township/Range: 33 6S95W



Storm water Management and Erosion control
Location Name: TEP ROCKY MOUNTAIN LLC Wasatch Compressor Station
Facility # 467146



North West corner of location.



North East corner of location.



South West corner of location.



South East corner of location.

Storm water Management and Erosion control
Location Name: TEP ROCKY MOUNTAIN LLC Wasatch Compressor Station
Facility # 467146



Photo # 8065 Chemical tote on location lacks BMP's/does not comply with CECMC Stormwater rules