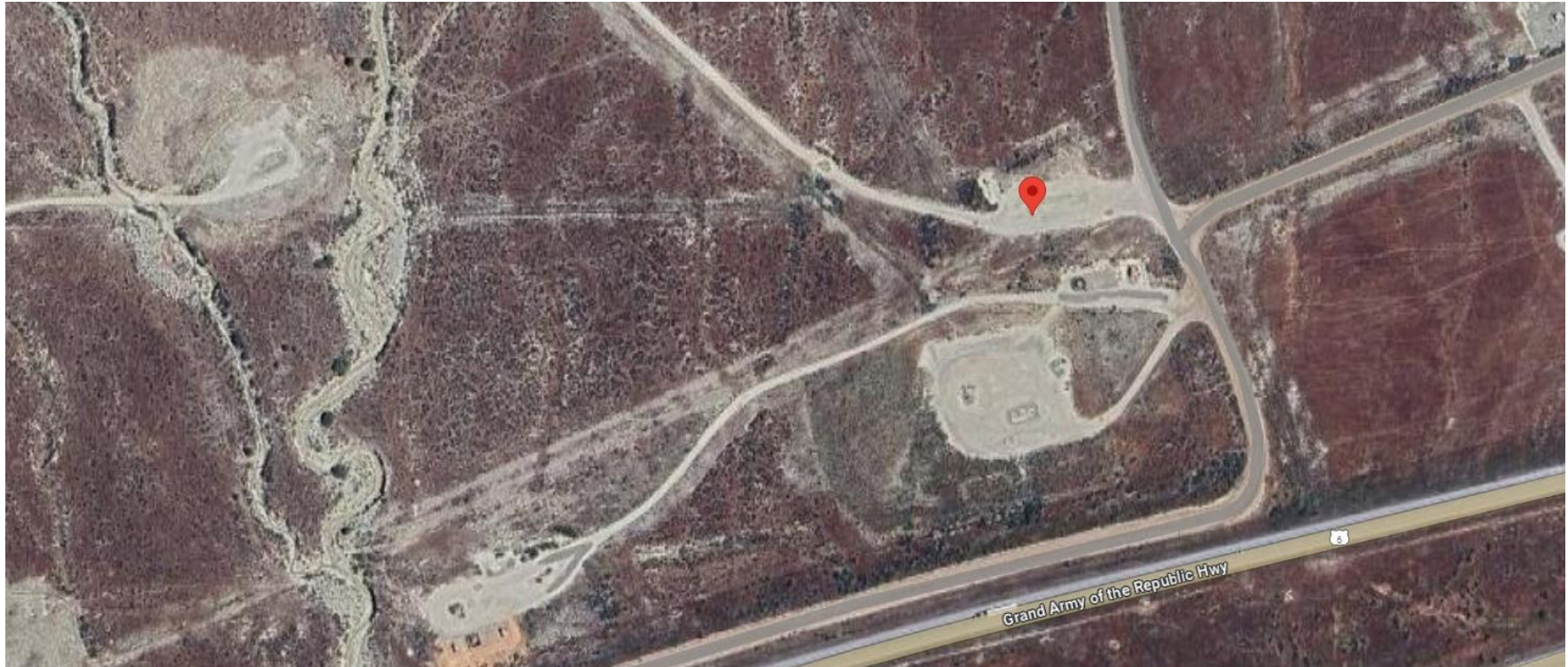


Storm Water Management and Erosion control
Location Name: TEP ROCKY MOUNTAIN LLC CLOUGH 111 Pad
Location ID: 322441



**Location Overview: Location is within High Priority/Density
Habitat areas & in close proximity to Bald Eagle Roost Site.
Location is approximately 348 yards from a creek/drainage
that contributes to the Colorado River.
Section/Township/Range: 21 6S94W**



COLORADO
Energy & Carbon Management
Commission
Department of Natural Resources

Storm water Management and Erosion control
Location Name: TEP ROCKY MOUNTAIN LLC CLOUGH 111 Pad
Location ID: 322441



North West corner of location.



North East corner of location.



South West corner of location.



South East corner of location.