

Hilcorp Energy Company  
Duncan Unit 1 #3  
Location ID: 313036



As signs are replaced additional information is required



Debris





**Hilcorp Energy Company**  
**Duncan Unit 1 #3**  
**Location ID: 313036**



**No sign at wellhead**



**Debris**



**Hilcorp Energy Company**  
**Duncan Unit 1 #3**  
**Location ID: 313036**



**Blanking plug in wellhead?**



**Debris**



**Hilcorp Energy Company  
Duncan Unit 1 #3  
Location ID: 313036**



**Missing required information**



**Debris**

**Hilcorp Energy Company  
Duncan Unit 1 #3  
Location ID: 313036**



**Open to wildlife**



**Debris**



**Hilcorp Energy Company**  
**Duncan Unit 1 #3**  
**Location ID: 313036**



**Debris**



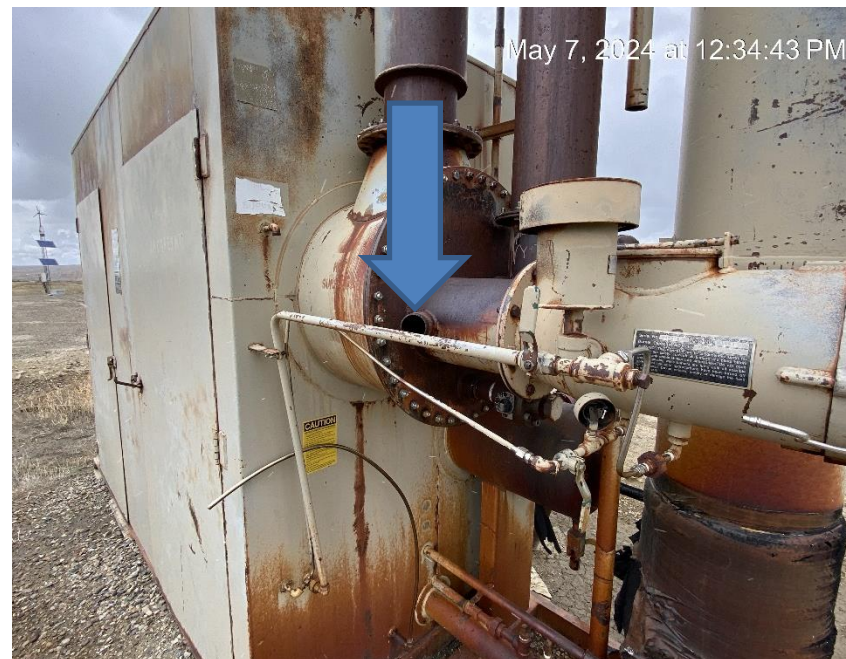
**Debris**



**Hilcorp Energy Company**  
**Duncan Unit 1 #3**  
**Location ID: 313036**



**Debris**



**Open to wildlife**



**Hilcorp Energy Company**  
**Duncan Unit 1 #3**  
**Location ID: 313036**



**Debris**



**Unmarked anchor**



**Hilcorp Energy Company**  
**Duncan Unit 1 #3**  
**Location ID: 313036**



**Erosion and sediment migration**



**Erosion and sediment migration**



**Hilcorp Energy Company**  
**Duncan Unit 1 #3**  
**Location ID: 313036**



**Erosion and sediment migration**



**Location from Northwest corner**



**Hilcorp Energy Company**  
**Duncan Unit 1 #3**  
**Location ID: 313036**



**Location from Southwest corner**



**Location from Southeast corner**