



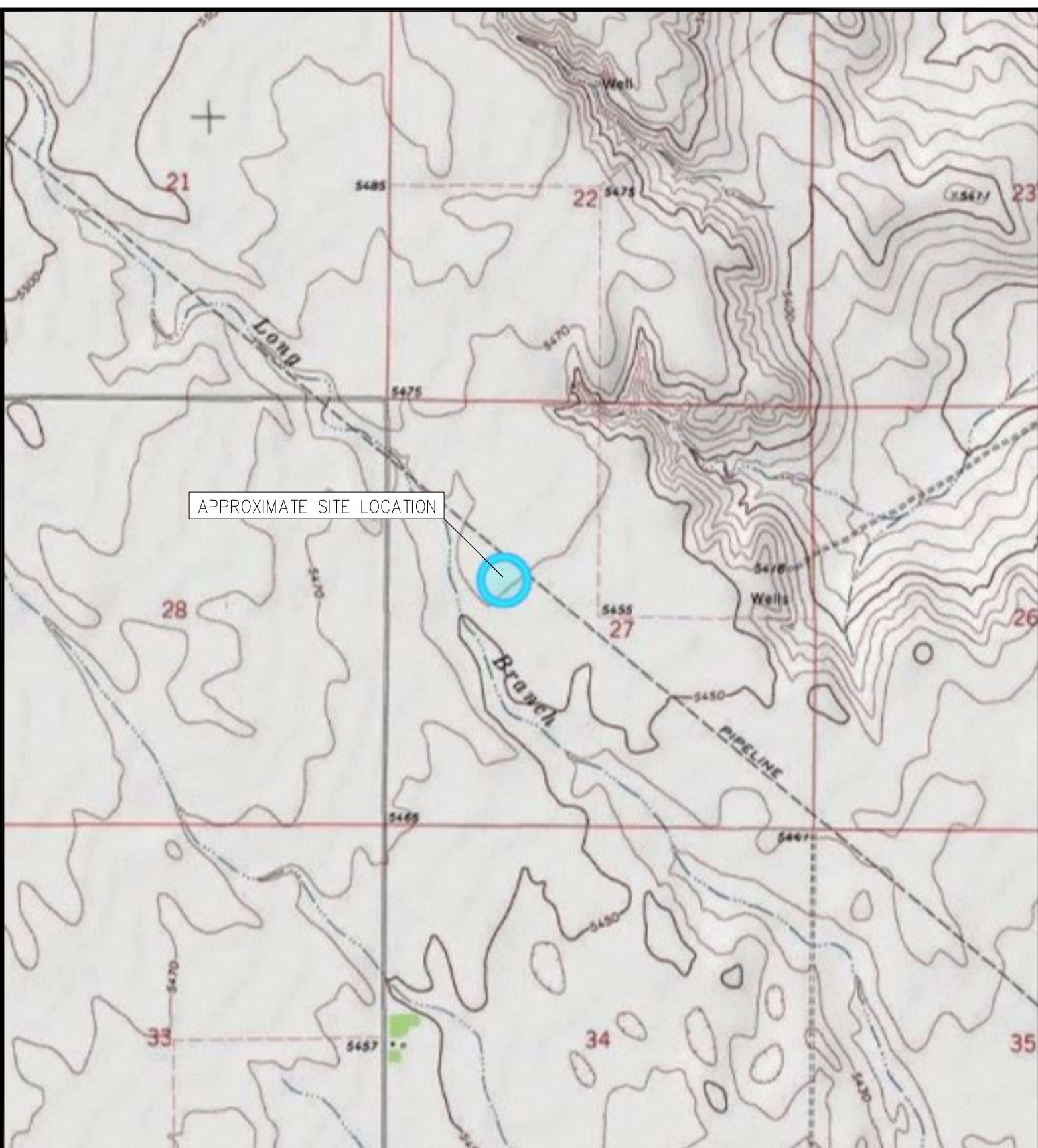
FIGURES

Figure 1: Topographic Site Location Map

Figure 2: Wellhead Soil Sample Location Map

Figure 3: Flowline Soil Sample Location Map

Figure 4: Production Facility Soil Sample Location Map



APPROXIMATE SITE LOCATION



TOPOGRAPHIC SITE LOCATION MAP
 MOONRAKER 6-27
 CLOSURE ASSESSMENT
 39.150730, -103.654100
 SE1/4 NW1/4 SEC.27 T10S R56W 6PM
 LINCOLN COUNTY, COLORADO
 API 05-073-06757
 REMEDIATION # 21623

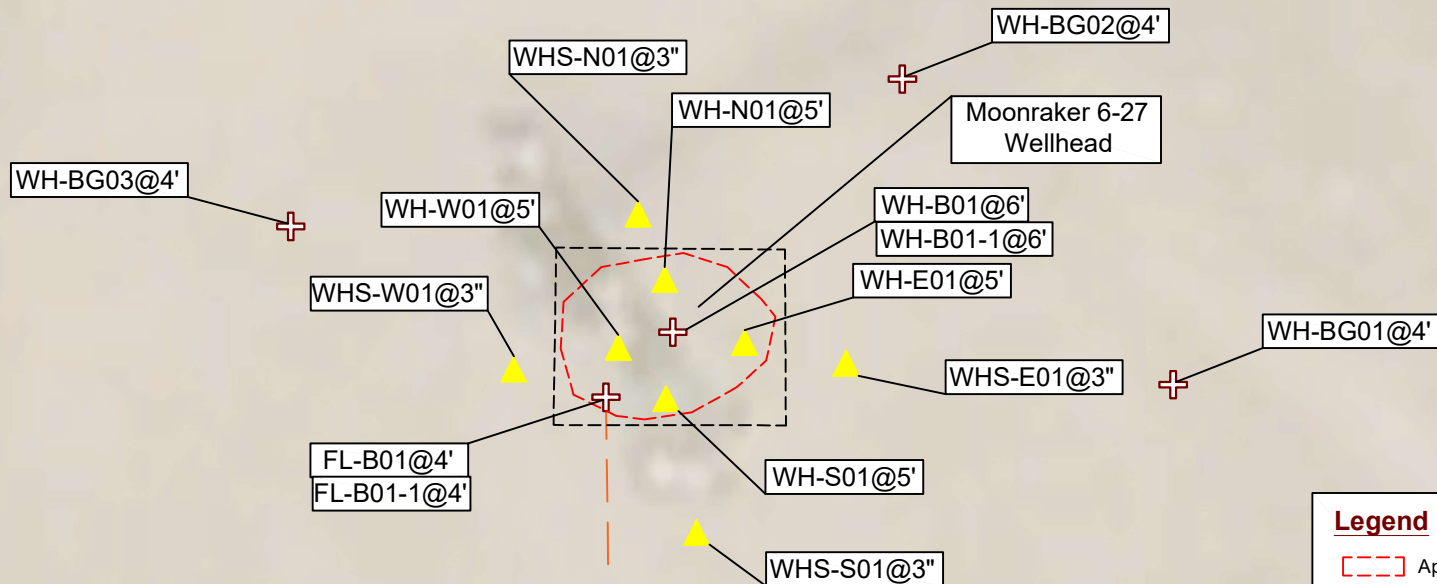


EAGLE
 ENVIRONMENTAL
 CONSULTING, LLC

8000 W 44th Ave, Wheat Ridge, CO 80033
 Ph: 303-433-0479 • F: 303-325-5449

SOURCE: USGS 7.5 MINUTE TOPOGRAPHIC MAP
 LAKE, CO QUADRANGLE 2022

FIGURE NO. 1



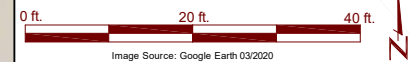
Legend

- Approximate excavation extent
- Approximate work area
- + Approximate soil sample location
- ▲ Approximate soil screening location
- Flowline location

Notes

All locations are approximate unless otherwise noted.

All equipment has been previously removed.



DATE: 05/09/2024

DESIGNED BY: DAC

DRAWN BY: DAC

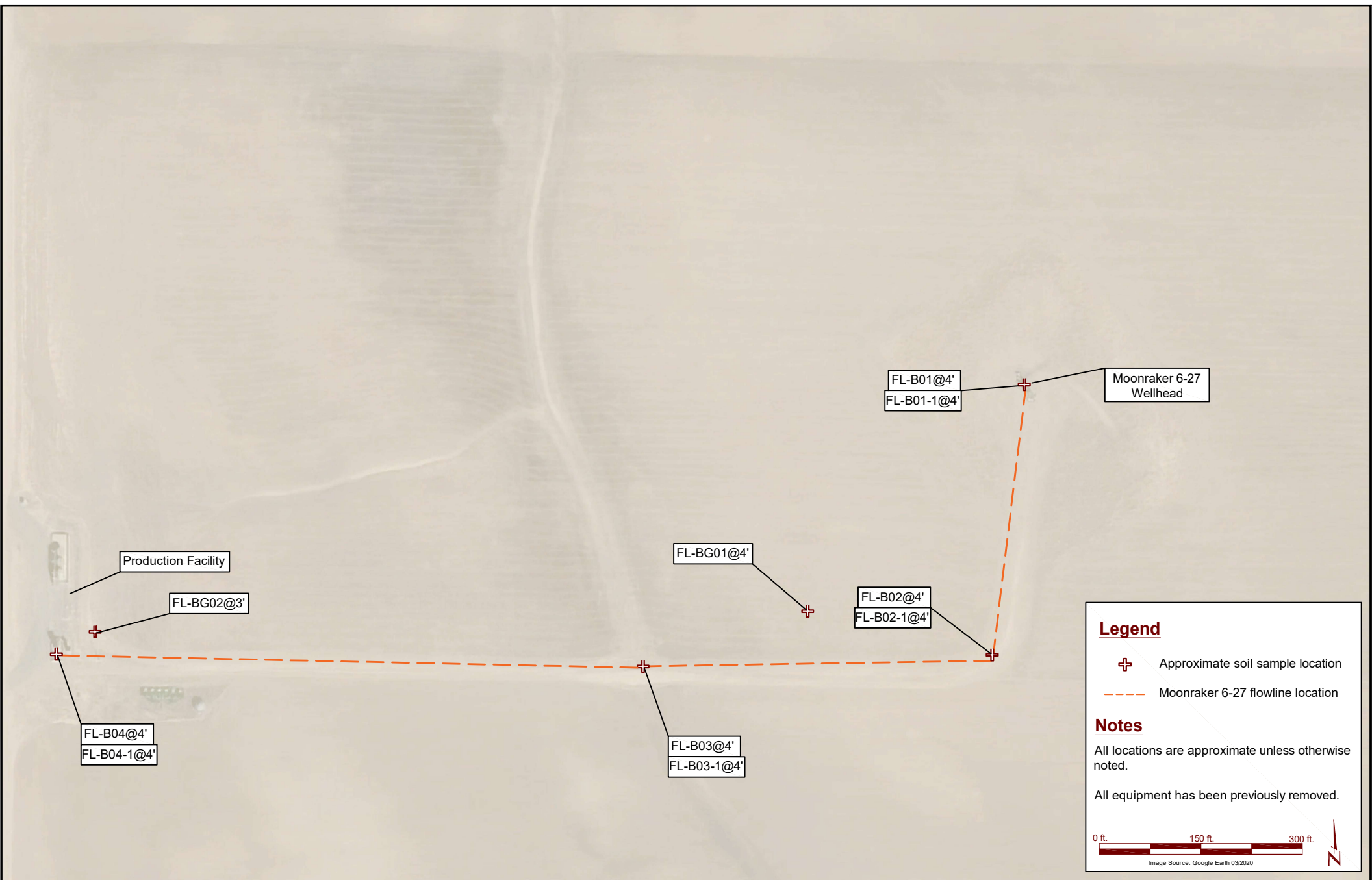


EAGLE
ENVIRONMENTAL
CONSULTING, LLC
8000 W 44th Ave, Wheat Ridge, CO 80033
Ph: 303-433-0479 · F: 303-323-5449

Murfin Drilling Company, Inc.
Moonraker 6-27
SENW Sec. 27-T10S-R56W
Lincoln County, Colorado

Wellhead Soil Sample
Location Map

Figure
2



DATE:	05/09/2024
DESIGNED BY:	DAC
DRAWN BY:	DAC

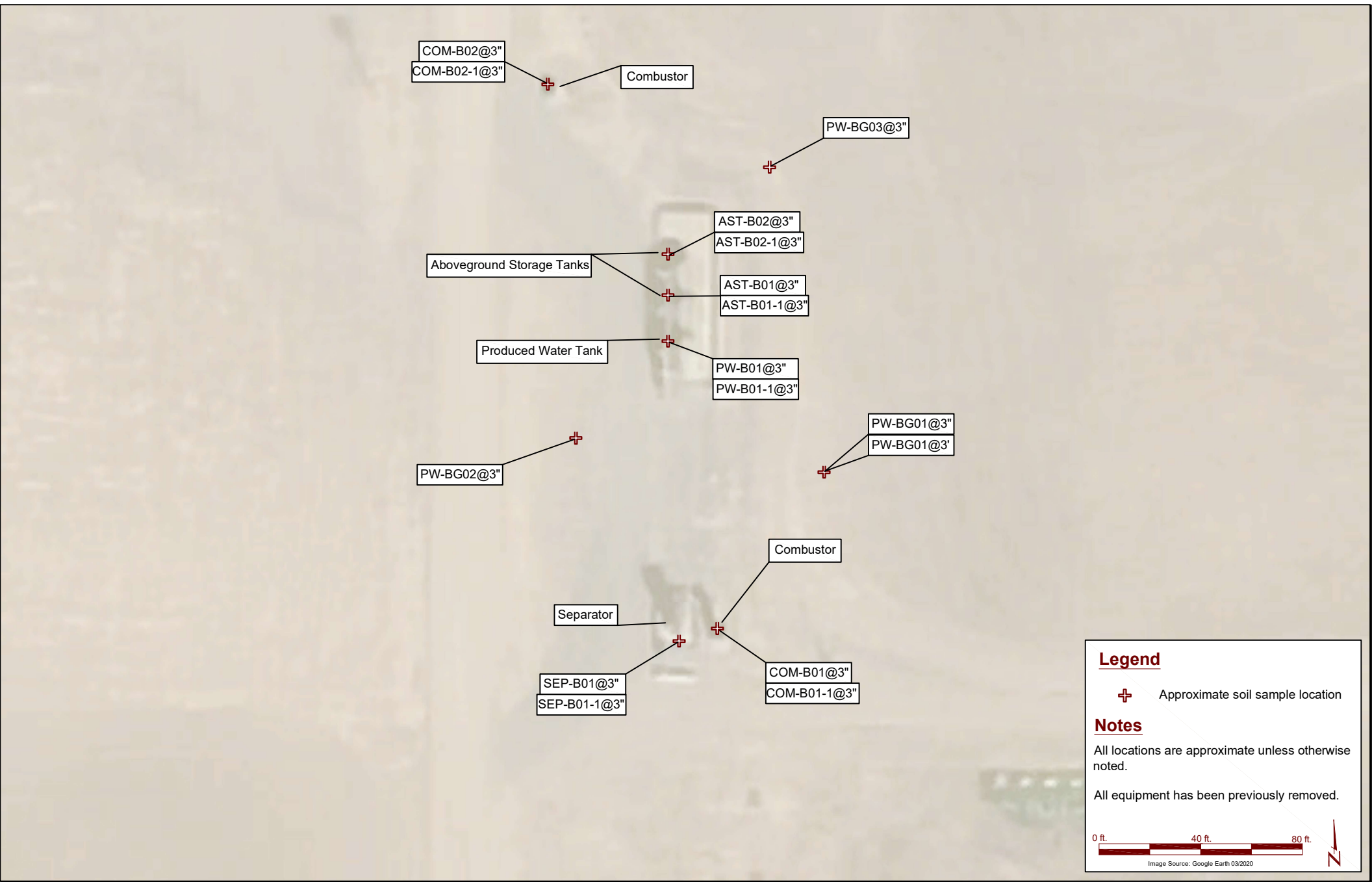


EAGLE
ENVIRONMENTAL
CONSULTING, LLC
8000 W 44th Ave, Wheat Ridge, CO 80033
Ph: 303-433-0479 · F: 303-325-5449

Murfin Drilling Company, Inc.
Moonraker 6-27
SENW Sec. 27-T10S-R56W
Lincoln County, Colorado

Flowline Soil Sample
Location Map

Figure
3





TABLES

Table 1: Photoionization Detector Reading Summary

Table 2: Soil Analytical Results Summary

Table 3: Polycyclic Aromatic Hydrocarbons Analytical Results Summary

Table 4: Metals Analytical Results Summary

TABLE 1
PHOTOIONIZATION DETECTOR READING SUMMARY
MOONRAKER 6-27
CLOSURE ASSESSMENT
39.150730, -103.654100
SE1/4 NW1/4 SEC.27 T10S R56W 6PM
LINCOLN COUNTY, COLORADO
API 05-073-06757
REMEDATION # 21623

Sample Location (Latitude/Longitude)	Date	Approximate Depth	PID Reading (ppm-v)	Lab Submission (Y/N)
AST-B01 @ 3" 39.150095, -103.659111	02/03/23	0.25'	1.8	Y
AST-B02 @ 3" 39.150150, -103.659113	02/03/23	0.25'	1.3	Y
PW-B01 @ 3" 39.150048, -103.659111	02/03/23	0.25'	2.1	Y
SEP-B01 @ 3" 39.149760, -103.659093	02/03/23	0.25'	1.5	Y
COM-B01 @ 3" 39.149746, -103.659049	02/03/23	0.25'	0.6	Y
COM-B02 @ 3" 39.150332, -103.569277	02/03/23	0.25'	1.8	Y
FL-B02 @ 4' 39.149725, -103.656021	02/03/23	4'	0.6	Y
FL-B03 @ 4' 39.149656, -103.656021	02/03/23	4'	0.3	Y
FL-B04 @ 4' 39.14974, -103.65909	02/03/23	4'	1.1	Y
PW-BG01 @ 3" 39.150048, -103.659111	02/03/23	0.25'	1.6	HOLD
PW-BG01 @ 3' 39.150048, -103.659111	02/03/23	3'	1.4	HOLD
WH-B01 @ 6' 39.150724, -103.654113	03/09/23	6'	0.0	Y
WH-N01 @ 5' 39.150737, -103.654116	03/09/23	5'	0.3	N
WH-S01 @ 5' 39.150706, -103.654114	03/09/23	5'	0.6	N
WH-E01 @ 5' 39.150722, -103.654094	03/09/23	5'	0.4	N
WH-W01 @ 5' 39.150719, -103.654128	03/09/23	5'	1.2	N
WHS-N01 @ 3" 39.150750, -103.654119	03/09/23	0.25'	2.9	N



TABLE 1
PHOTOIONIZATION DETECTOR READING SUMMARY
MOONRAKER 6-27
CLOSURE ASSESSMENT
39.150730, -103.654100
SE1/4 NW1/4 SEC.27 T10S R56W 6PM
LINCOLN COUNTY, COLORADO
API 05-073-06757
REMEDIATION # 21623

Sample Location (Latitude/Longitude)	Date	Approximate Depth	PID Reading (ppm-v)	Lab Submission (Y/N)
WHS-S01 @ 3" 39.150652, -103.654100	03/09/23	0.25'	0.6	N
WHS-E01 @ 3" 39.150720, -103.654058	03/09/23	0.25'	1.6	N
WHS-W01 @ 3" 39.150716, -103.654161	03/09/23	0.25'	0.7	N
FL-B01 @ 4' 39.150706, -103.654132	03/09/23	4'	0.6	N
WH-BG01 @ 4' 39.150684, -103.653893	03/09/23	4'	1.3	HOLD
AST-B01-1 @ 3" 39.150095, -103.659111	04/23/24	3"	0.4	Y
AST-B02-1 @ 3" 39.150150, -103.659113	04/23/24	3"	1.1	Y
PW-B01-1 @ 3" 39.150048, -103.659111	04/23/24	3'	0.8	Y
SEP-B01-1 @ 3" 39.149760, -103.659093	04/23/24	3"	0.6	Y
COM-B01-1 @ 3" 39.149746, -103.659049	04/23/24	3"	1.2	Y
COM-B02-1 @ 3" 39.150332, -103.569277	04/23/24	3"	1.0	Y
WH-B01-1 @ 6' 39.150724, -103.654113	04/23/24	6'	0.6	Y
FL-B01-1 @ 4' 39.150706, -103.654132	04/23/24	4'	0.4	Y
FL-B02-1 @ 4' 39.149725, -103.656021	04/23/24	4'	0.3	Y
FL-B03-1 @ 4' 39.149656, -103.656021	04/23/24	4'	0.8	Y
FL-B04-1 @ 4' 39.14974, -103.65909	04/23/24	4'	0.4	Y
WH-BG02 @ 4' (39.150842, -103.654072)	04/23/24	4'	1.1	Y



TABLE 1
PHOTOIONIZATION DETECTOR READING SUMMARY
MOONRAKER 6-27
CLOSURE ASSESSMENT
39.150730, -103.654100
SE1/4 NW1/4 SEC.27 T10S R56W 6PM
LINCOLN COUNTY, COLORADO
API 05-073-06757
REMEDATION # 21623

Sample Location (Latitude/Longitude)	Date	Approximate Depth	PID Reading (ppm-v)	Lab Submission (Y/N)
WH-BG03 @ 4' (39.150773, -103.654274)	04/23/24	4'	0.6	Y
FL-BG01 @ 4' (39.149834, -103.655070)	04/23/24	4'	0.9	Y
FL-BG02 @ 3' (39.149812, -103.658916)	04/23/24	3'	0.3	Y
PW-BG02 @ 3" (39.149944, -103.659230)	04/23/24	3"	0.8	Y
PW-BG03 @ 3" (39.150232, -103.658983)	04/23/24	3"	0.6	Y
(Y/N) = Yes or No ppm-v = parts per million by volume PID = photoionization detector				



TABLE 2
SOIL ANALYTICAL RESULTS SUMMARY
MOONRAKER 6-27
CLOSURE ASSESSMENT
39.150730, -103.654100
SE1/4 NW1/4 SEC.27 T10S R56W 6PM
LINCOLN COUNTY, COLORADO
API 05-073-06757
REMEDATION # 21623

Sample Location (Latitude/Longitude)	Date	Approximate Depth	PID Reading (ppm-v)	Benzene (mg/kg)	Toluene (mg/kg)	Ethylbenzene (mg/kg)	Total Xylenes (mg/kg)	TPH-GRO (mg/kg)	TPH-DRO (mg/kg)	TPH-RRO (mg/kg)	1,2,4-TMB (mg/kg)	1,3,5-TMB (mg/kg)	Boron (mg/L)	Specific Conductance (mmhos/cm)	pH (pH units)	SAR
CECMC Table 915-1 Residential Soil Screening Levels				1.20	490	5.8	58	500			30	27	2	<4	6-8.3	<6
CECMC Table 915-1 Protection of Groundwater Soil Screening Levels				0.0026	0.69	0.78	9.9	-			0.0081	0.0087	-	-	-	-
AST-B01 @ 3" 39.150095, -103.659111	02/03/23	0.25	1.8	<0.00200	<0.00200	<0.00200	<0.00200	<0.200	<25.0	<100	<0.00200	<0.00200	<0.100	0.331	8.14	0.573
AST-B02 @ 3" 39.150150, -103.659113	02/03/23	0.25	1.3	<0.00200	<0.00200	<0.00200	<0.00200	<0.200	<25.0	<100	<0.00200	<0.00200	0.137	0.447	8.22	0.751
PW-B01 @ 3" 39.150048, -103.659111	02/03/23	0.25	2.1	<0.00200	<0.00200	<0.00200	<0.00200	<0.200	<25.0	<100	<0.00200	<0.00200	<0.0989	0.485	8.33*	5.40
SEP-B01 @ 3" 39.149760, -103.659093	02/03/23	0.25	1.5	<0.00200	<0.00200	<0.00200	<0.00200	<0.200	<25.0	<100	<0.00200	<0.00200	0.123	0.300	8.03	0.00
COM-B01 @ 3" 39.149746, -103.659049	02/03/23	0.25	0.6	<0.00200	<0.00200	<0.00200	<0.00200	<0.200	<25.0	<100	<0.00200	<0.00200	0.346	0.556	8.12	0.583
COM-B02 @ 3" 39.150332, -103.569277	02/03/23	0.25	1.8	<0.00200	<0.00200	<0.00200	<0.00200	<0.200	<25.0	<100	<0.00200	<0.00200	0.255	0.369	7.93	0.450
FL-B02 @ 4' 39.149725, -103.656021	02/03/23	4	0.6	<0.00200	<0.00200	<0.00200	<0.00200	<0.200	<25.0	<100	<0.00200	<0.00200	0.466	1.02	8.18	2.90
FL-B03 @ 4' 39.149656, -103.656021	02/03/23	4	0.3	<0.00200	<0.00200	<0.00200	<0.00200	<0.200	<25.0	<100	<0.00200	<0.00200	<1.02	0.338	7.76	0.101
FL-B04 @ 4' 39.14974, -103.65909	02/03/23	4	1.1	<0.00200	<0.00200	<0.00200	<0.00200	<0.200	<25.0	<100	<0.00200	<0.00200	0.470	0.486	8.09	0.704
WH-B01 @ 6' 39.150724, -103.654113	03/09/23	6	0.0	<0.00200	<0.00200	<0.00200	<0.00200	<0.200	35.1	<100	<0.00200	<0.00200	0.445	2.32	8.05	4.64
FL-B01 @ 4' 39.150706, -103.654132	03/09/23	4	0.6	<0.00200	<0.00200	<0.00200	<0.00200	<0.200	<25.0	<100	<0.00200	<0.00200	0.192	1.22	8.06	2.53
CECMC = Colorado Energy & Carbon Management Commission				mg/kg = milligrams per kilogram				mg/L = milligrams per liter				mmhos/cm = millimhos per centimeter				
SAR = Sodium Adsorption Ratio				PID = Photoionization Detector				ppm-v = parts per million by volume								
TPH-GRO = Total Petroleum Hydrocarbons - Gasoline Range Organics				1,2,4-TMB = 1,2,4-Trimethylbenzene												
TPH-DRO = Total Petroleum Hydrocarbons - Diesel Range Organics				1,3,5-TMB = 1,3,5-Trimethylbenzene												
TPH-RRO = Total Petroleum Hydrocarbons - Residual Range Organics																
Values presented with a less than symbol (<) did not contain concentrations at or above the laboratory reporting limit.																
Values presented in BOLD* contained concentrations exceeding CECMC Table 915-1 Residential Screening Levels, but are within an acceptable range of analytical variability.																

TABLE 3
POLYCYCLIC AROMATIC HYDROCARBONS ANALYTICAL RESULTS SUMMARY
MOONRAKER 6-27
CLOSURE ASSESSMENT
39.150730, -103.654100
SE1/4 NW1/4 SEC.27 T10S R56W 6PM
LINCOLN COUNTY, COLORADO
API 05-073-06757
REMEDATION # 21623

Sample Location (Latitude/Longitude)	Date	Approximate Depth	PID Reading (ppm-v)	1-Methyl- naphthalene (mg/kg)	2-Methyl- naphthalene (mg/kg)	Acenaphthene (mg/kg)	Anthracene (mg/kg)	Benzo(a)- anthracene (mg/kg)	Benzo(a)- pyrene (mg/kg)	Benzo(b)- fluoranthene (mg/kg)	Benzo(k)- fluoranthene (mg/kg)	Chrysene (mg/kg)	Dibenzo(a,h)- anthracene (mg/kg)	Fluoranthene (mg/kg)	Fluorene (mg/kg)	Indeno(1,2,3- cd)-pyrene (mg/kg)	Naphthalene (mg/kg)	Pyrene (mg/kg)	
CECMC Table 915-1 Residential Soil Screening Levels				18	24	360	1,800	1.1	0.11	1.1	11	110	0.11	240	240	1.1	2	180	
CECMC Table 915-1 Protection of Groundwater Soil Screening Levels				0.006	0.019	0.55	5.8	0.011	0.24	0.3	2.9	9	0.096	8.9	0.54	0.98	0.0038	1.3	
AST-B01 @ 3" 39.150095, -103.659111	02/03/23	0.25	1.8	NA	NA	NA	NA	NA	NA	NA	NA	NA	NA	NA	NA	NA	<0.00380	NA	
AST-B02 @ 3" 39.150150, -103.659113	02/03/23	0.25	1.3	NA	NA	NA	NA	NA	NA	NA	NA	NA	NA	NA	NA	NA	<0.00380	NA	
PW-B01 @ 3" 39.150048, -103.659111	02/03/23	0.25	2.1	NA	NA	NA	NA	NA	NA	NA	NA	NA	NA	NA	NA	NA	<0.00380	NA	
SEP-B01 @ 3" 39.149760, -103.659093	02/03/23	0.25	1.5	NA	NA	NA	NA	NA	NA	NA	NA	NA	NA	NA	NA	NA	<0.00380	NA	
COM-B01 @ 3" 39.149746, -103.659049	02/03/23	0.25	0.6	NA	NA	NA	NA	NA	NA	NA	NA	NA	NA	NA	NA	NA	<0.00380	NA	
COM-B02 @ 3" 39.150332, -103.569277	02/03/23	0.25	1.8	NA	NA	NA	NA	NA	NA	NA	NA	NA	NA	NA	NA	NA	<0.00380	NA	
FL-B02 @ 4" 39.149725, -103.656021	02/03/23	4	0.6	NA	NA	NA	NA	NA	NA	NA	NA	NA	NA	NA	NA	NA	<0.00380	NA	
FL-B03 @ 4" 39.149656, -103.656021	02/03/23	4	0.3	NA	NA	NA	NA	NA	NA	NA	NA	NA	NA	NA	NA	NA	<0.00380	NA	
FL-B04 @ 4" 39.14974, -103.65909	02/03/23	4	1.1	NA	NA	NA	NA	NA	NA	NA	NA	NA	NA	NA	NA	NA	<0.00380	NA	
WH-B01 @ 6" 39.150724, -103.654113	03/09/23	6	0.0	NA	NA	NA	NA	NA	NA	NA	NA	NA	NA	NA	NA	NA	<0.00380	NA	
FL-B01 @ 4" 39.150706, -103.654132	03/09/23	4	0.6	NA	NA	NA	NA	NA	NA	NA	NA	NA	NA	NA	NA	NA	<0.00380	NA	
AST-B01-1 @ 3" 39.150095, -103.659111	04/23/24	3"	0.4	<0.002	<0.002	<0.020	<0.020	<0.005	<0.020	<0.020	<0.020	<0.020	<0.020	<0.020	<0.020	<0.020	<0.002	<0.020	
AST-B02-1 @ 3" 39.150150, -103.659113	04/23/24	3"	1.1	<0.002	<0.002	<0.020	<0.020	<0.005	<0.020	<0.020	<0.020	<0.020	<0.020	<0.020	<0.020	<0.020	<0.002	<0.020	
PW-B01-1 @ 3" 39.150048, -103.659111	04/23/24	3'	0.8	<0.002	<0.002	<0.020	<0.020	<0.005	<0.020	<0.020	<0.020	<0.020	<0.020	<0.020	<0.020	<0.020	<0.002	<0.020	
SEP-B01-1 @ 3" 39.149760, -103.659093	04/23/24	3"	0.6	<0.002	<0.002	<0.020	<0.020	<0.005	<0.020	<0.020	<0.020	<0.020	<0.020	<0.020	<0.020	<0.020	<0.002	<0.020	
COM-B01-1 @ 3" 39.149746, -103.659049	04/23/24	3"	1.2	<0.002	<0.002	<0.020	<0.020	<0.005	<0.020	<0.020	<0.020	<0.020	<0.020	<0.020	<0.020	<0.020	<0.002	<0.020	
COM-B02-1 @ 3" 39.150332, -103.569277	04/23/24	3"	1.0	<0.002	<0.002	<0.020	<0.020	<0.005	<0.020	<0.020	<0.020	<0.020	<0.020	<0.020	<0.020	<0.020	<0.002	<0.020	
WH-B01-1 @ 6" 39.150724, -103.654113	04/23/24	6"	0.6	<0.002	<0.002	<0.020	<0.020	<0.005	<0.020	<0.020	<0.020	<0.020	<0.020	<0.020	<0.020	<0.020	<0.002	<0.020	
FL-B01-1 @ 4" 39.150706, -103.654132	04/23/24	4'	0.4	<0.002	<0.002	<0.020	<0.020	<0.005	<0.020	<0.020	<0.020	<0.020	<0.020	<0.020	<0.020	<0.020	<0.002	<0.020	
FL-B02-1 @ 4" 39.149725, -103.656021	04/23/24	4'	0.3	<0.002	<0.002	<0.020	<0.020	<0.005	<0.020	<0.020	<0.020	<0.020	<0.020	<0.020	<0.020	<0.020	<0.002	<0.020	
FL-B03-1 @ 4" 39.149656, -103.656021	04/23/24	4'	0.8	<0.002	<0.002	<0.020	<0.020	<0.005	<0.020	<0.020	<0.020	<0.020	<0.020	<0.020	<0.020	<0.020	<0.002	<0.020	
FL-B04-1 @ 4" 39.14974, -103.65909	04/23/24	4'	0.4	<0.002	<0.002	<0.020	<0.020	<0.005	<0.020	<0.020	<0.020	<0.020	<0.020	<0.020	<0.020	<0.020	<0.002	<0.020	
CECMC = Colorado Energy & Carbon Management Commission				PID = Photoionization Detector				ppm-v = parts per million by volume				mg/kg = milligrams per kilogram				NA = Not analyzed			
Values presented with a less than symbol (<) did not contain concentrations at or above the laboratory reporting limit.																			

TABLE 4
METALS ANALYTICAL RESULTS SUMMARY
MOONRAKER 6-27
CLOSURE ASSESSMENT
39.150730, -103.654100
SE1/4 NW1/4 SEC.27 T10S R56W 6PM
LINCOLN COUNTY, COLORADO
API 05-073-06757
REMEDATION # 21623

Sample Location (Latitude/Longitude)	Date	Approximate Depth	Arsenic (mg/kg)	Barium (mg/kg)	Cadmium (mg/kg)	Hexavalent Chromium (mg/kg)	Copper (mg/kg)	Lead (mg/kg)	Nickel (mg/kg)	Selenium (mg/kg)	Silver (mg/kg)	Zinc (mg/kg)
CECMC Table 915-1 Residential Soil Screening Levels			0.68**	15,000	71	0.3*	3,100	400	1,500	390	390	23,000
CECMC Table 915-1 Protection of Groundwater Soil Screening Levels			0.29**	82	0.38	0.00067*	46	14	26	0.26	0.8	370
Local Cleanup Level			5.18**	-	-	-	-	-	-	-	-	-
AST-B01-1 @ 3" 39.150095, -103.659111	04/23/24	3"	3.04**	127	0.322	<0.161*	12.3	14.3	10.0	0.262	<0.0939	60.1
AST-B02-1 @ 3" 39.150150, -103.659113	04/23/24	3"	2.84**	102	0.320	<0.149*	10.8	13.3	8.75	<0.257	<0.0989	49.8
PW-B01-1 @ 3" 39.150048, -103.659111	04/23/24	3'	2.78**	124	0.315	<0.172*	11.8	13.4	9.92	<0.235	<0.0904	54.7
SEP-B01-1 @ 3" 39.149760, -103.659093	04/23/24	3"	2.62**	113	0.332	<0.163*	13.0	13.5	10.1	0.3	<0.0982	59.6
COM-B01-1 @ 3" 39.149746, -103.659049	04/23/24	3"	3.09**	116	0.330	<0.133*	12.4	13.9	10.1	<0.239	<0.0918	56.5
COM-B02-1 @ 3" 39.150332, -103.569277	04/23/24	3"	2.29**	110	0.329	<0.172*	10.9	13.1	8.86	<0.233	<0.0895	59.9
WH-B01-1 @ 6" 39.150724, -103.654113	04/23/24	6'	3.21**	111	0.156	<0.151*	9.72	9.59	9.54	<0.252	<0.0968	40.8
FL-B01-1 @ 4" 39.150706, -103.654132	04/23/24	4'	2.33**	47.5	0.113	<0.156*	<8.82	2.66	3.94	<0.229	<0.0882	<32.6
FL-B02-1 @ 4" 39.149725, -103.656021	04/23/24	4'	3.71**	228	0.149	<0.159*	9.75	10.1	10.3	<0.239	<0.0919	40.9
FL-B03-1 @ 4" 39.149656, -103.656021	04/23/24	4'	1.31**	40.7	<0.0871	<0.119*	<8.71	4.66	3.61	<0.227	<0.0871	<32.2
FL-B04-1 @ 4" 39.14974, -103.65909	04/23/24	4'	8.05**	462	0.320	<0.171*	16.8	15.5	17.3	<0.220	<0.0847	69.1
Background												
WH-BG02 @ 4" (39.150842, -103.654072)	04/23/24	4'	5.18**	151	0.214	<0.174*	13.9	13.7	14.7	<0.251	<0.0964	57.2
WH-BG03 @ 4" (39.150773, -103.654274)	04/23/24	4'	4.74**	277	0.255	<0.143*	12.4	11.9	12.3	<0.245	<0.0944	49.1
FL-BG01 @ 4" (39.149834, -103.655070)	04/23/24	4'	4.43**	507	0.174	<0.154*	12.0	12.3	12.1	<0.246	<0.0946	51.6
FL-BG02 @ 3" (39.149812, -103.658916)	04/23/24	3'	4.73**	209	0.297	<0.163*	15.0	14.9	14.5	<0.256	<0.0984	70.0
PW-BG02 @ 3" (39.149944, -103.659230)	04/23/24	3"	2.72**	124	0.305	<0.141*	11.2	11.5	8.93	<0.227	<0.0873	48.9
PW-BG03 @ 3" (39.150232, -103.658983)	04/23/24	3"	2.93**	115	0.365	<0.172*	12.5	15.0	10.0	<0.233	<0.0897	58.2
CECMC = Colorado Energy & Carbon Management Commission												
mg/kg = milligrams per kilogram												
Values presented with a less than symbol (<) did not contain concentrations at or above the laboratory reporting limit.												
Values presented in BOLD contained concentrations exceeding CECMC Table 915-1 Residential Soil Screening Level Limits but within Background results												
Values presented in BOLD contained concentrations exceeding CECMC Table 915-1 Residential Soil Screening Level Limits and Background results												
*Achievable practical quantitative limits for Hexavalent Chromium in soils is in the range of 0.1 to 1 mg/kg.												
**Arsenic is naturally occurring in Colorado. Local Cleanup Level (5.18 mg/kg) is Background.												



ATTACHMENT A

Photo Log

Moonraker 6-27

Photographic Log

Remediation #21623

Wellhead, Flowline, and Tank Battery Decommissioning



Assessment 02/03/2023



Tank battery sample locations looking south.



Background soil sample locations looking west

Assessment 02/03/2023

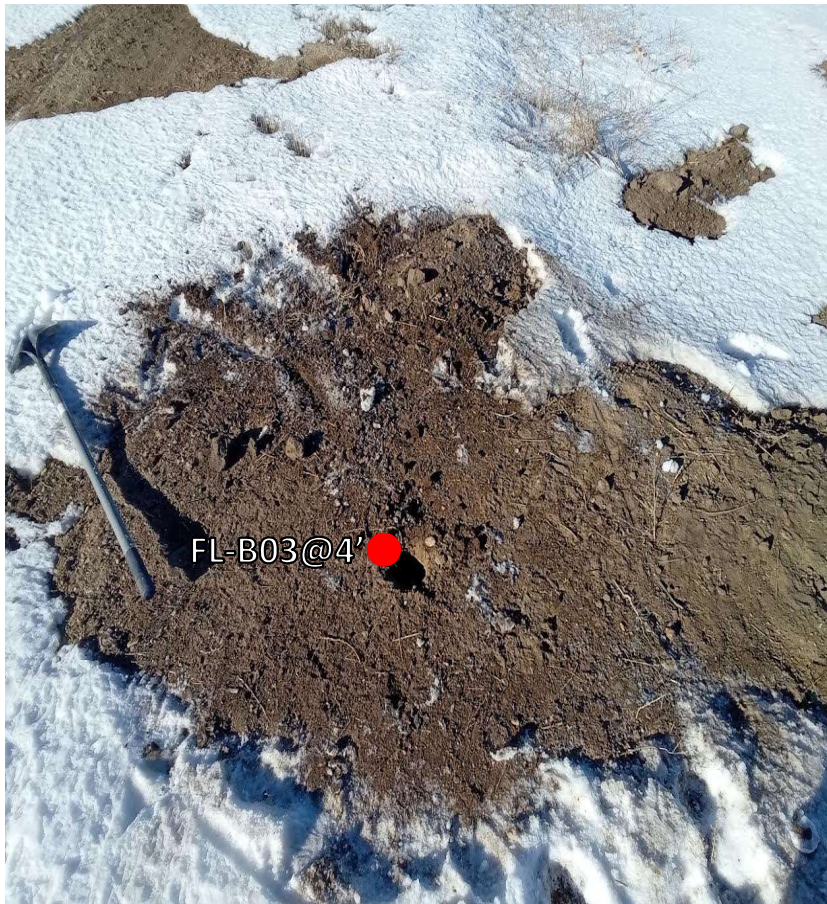


Separator, flowline, and combustor sample locations and looking northwest.

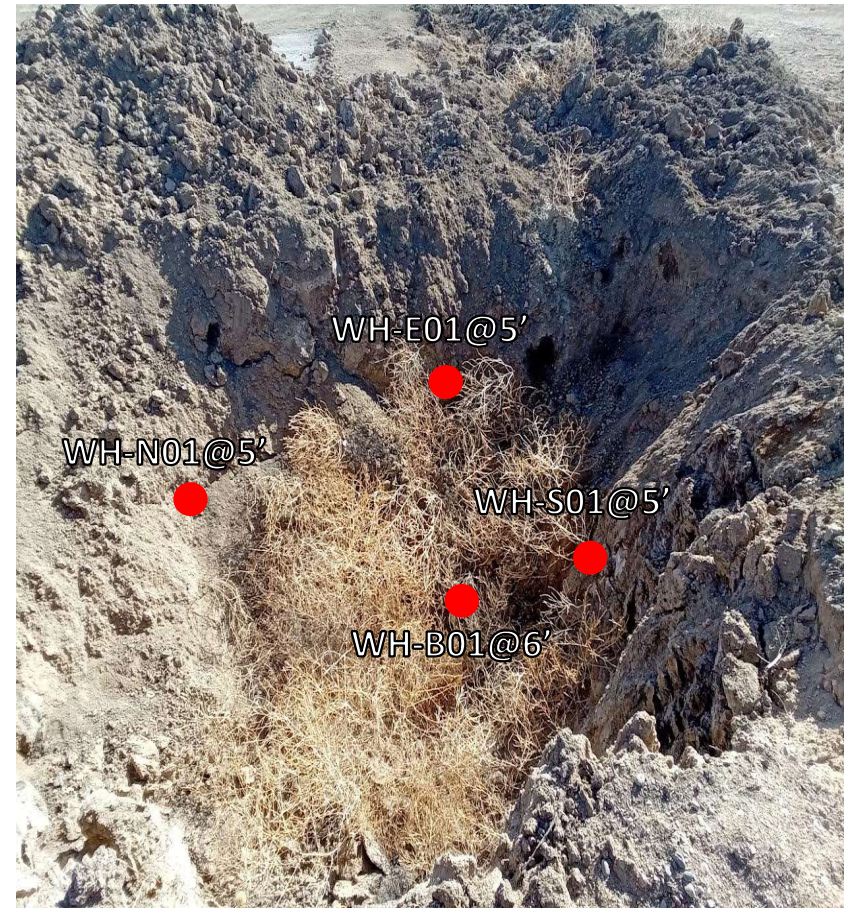


Flowline sample location looking west.

Assessment 02/03/2023 & 03/09/2023

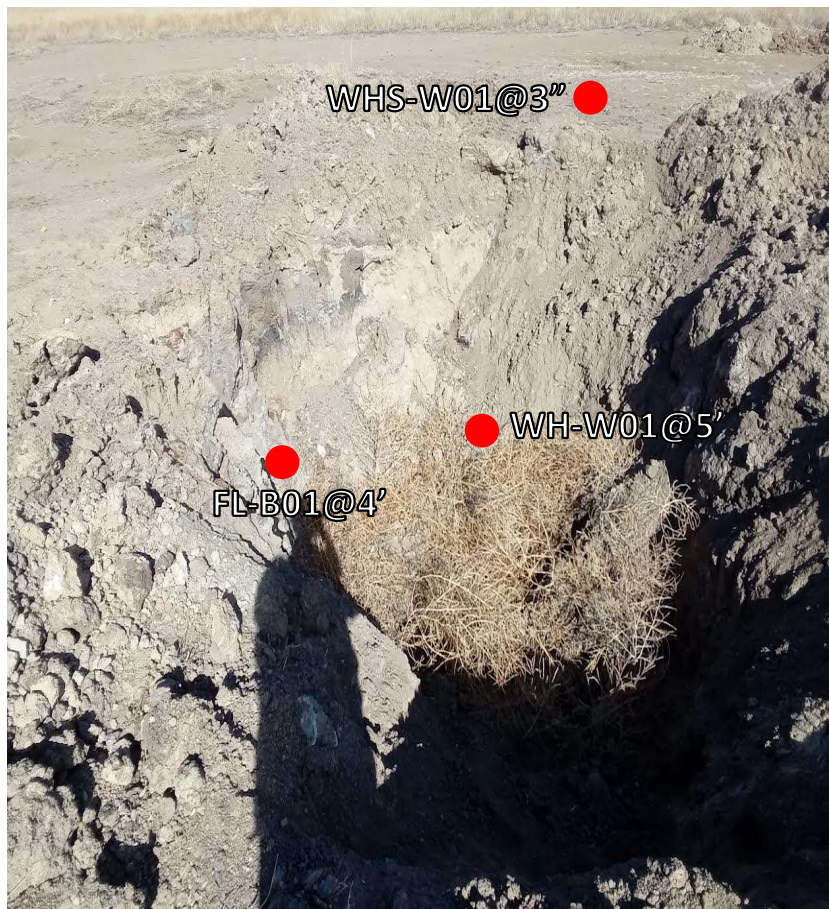


Flowline sample location looking west.



Wellhead sample locations looking east.

Assessment 03/09/2023



Wellhead/Flowline sample locations looking west.



Wellhead sample locations looking east.

Assessment 03/09/2023



Wellhead background sample location looking west.

Assessment 04/23/2024



Facing north
No petroleum hydrocarbon staining or odor observed



Facing north
No petroleum hydrocarbon staining or odor observed

Assessment 04/23/2024



Facing north
No petroleum hydrocarbon staining or odor observed



Facing north
No petroleum hydrocarbon staining or odor observed

Assessment 04/23/2024



Facing north
No petroleum hydrocarbon staining or odor observed



Facing north
No petroleum hydrocarbon staining or odor observed

Assessment 04/23/2024



Facing north
No petroleum hydrocarbon staining or odor observed



Facing south
No petroleum hydrocarbon staining or odor observed

Assessment 04/23/2024



Facing north
No petroleum hydrocarbon staining or odor observed



Facing north
No petroleum hydrocarbon staining or odor observed

Assessment 04/23/2024



Facing north
No petroleum hydrocarbon staining or odor observed



Facing north
No petroleum hydrocarbon staining or odor observed

Assessment 04/23/2024



Facing north
No petroleum hydrocarbon staining or odor observed



Facing north
No petroleum hydrocarbon staining or odor observed

Assessment 04/23/2024



Facing north
No petroleum hydrocarbon staining or odor observed



Facing north
No petroleum hydrocarbon staining or odor observed

Assessment 04/23/2024



Facing north
No petroleum hydrocarbon staining or odor observed



ATTACHMENT B

Laboratory Analytical Reports



February 10, 2023

Eagle Environmental Consulting, Inc.

Dan Coloccia

8000 W 44th Ave

Wheat Ridge CO 80033

Project Name - Moonracker 6-27

Project Number - [none]

Attached are your analytical results for Moonracker 6-27 received by Origins Laboratory, Inc. February 03, 2023. This project is associated with Origins project number Y302060-01.

The analytical results in the following report were analyzed under the guidelines of EPA Methods. These methods are identified as follows; "SW" are defined in SW-846, "EPA" are defined in 40CFR part 136 and "SM" are defined in the most current revision of Standard Methods For the Examination of Water and Wastewater.

The analytical results apply specifically to the samples and analyses specified per the attached Chain of Custody. As such, this report shall not be reproduced except in full, without the written approval of Origin's laboratory.

Unless otherwise noted, the analytical results for all soil samples are reported on a wet weight basis. All analytical analyses were performed under NELAP guidelines unless noted by a data qualifier.

Any holding time exceedances, deviations from the method specifications or deviations from Origins Laboratory's Standard Operating Procedures are outlined in the case narrative.

Thank you for selecting Origins for your analytical needs. Please contact us with any questions concerning this report, or if we can help with anything at all.

Origins Laboratory, Inc.
303.433.1322
o-squad@oelabinc.com



1725 Elk Place, Denver, CO 80211 | Phone: 303.433.1322 | Fax: 303.265.9645

Eagle Environmental Consulting, Inc.

8000 W 44th Ave

Wheat Ridge CO 80033

Dan Coloccia

Project Number: [none]

Project: Moonracker 6-27

CROSS REFERENCE REPORT

Sample ID	Laboratory ID	Matrix	Date Sampled	Date Received
Ast-B01@3"	Y302060-01	Soil	February 3, 2023 10:00	02/03/2023 14:06
Ast-B02@3"	Y302060-02	Soil	February 3, 2023 10:01	02/03/2023 14:06
PW-B01@3"	Y302060-03	Soil	February 3, 2023 10:02	02/03/2023 14:06
SEP-B01@3"	Y302060-04	Soil	February 3, 2023 10:03	02/03/2023 14:06
COM-B01@3"	Y302060-05	Soil	February 3, 2023 10:04	02/03/2023 14:06
COM-B02@3"	Y302060-06	Soil	February 3, 2023 10:05	02/03/2023 14:06
FL-B02@4'	Y302060-07	Soil	February 3, 2023 10:06	02/03/2023 14:06
FL-B03@4'	Y302060-08	Soil	February 3, 2023 10:07	02/03/2023 14:06
FL-B04@4'	Y302060-09	Soil	February 3, 2023 10:08	02/03/2023 14:06

Origins Laboratory, Inc.



The results in this report apply to the samples analyzed in accordance with the chain of custody document. This analytical report must be reproduced in its entirety.

Eagle Environmental Consulting, Inc.
8000 W 44th Ave
Wheat Ridge CO 80033

Dan Coloccia
Project Number: [none]
Project: Moonraker 6-27

www.originslaboratory.com
page 1 of 1

ORIGINS
LABORATORY, INC

Client: Eagle Environmental (Mudwin Drilling)
Address: 8000 W 44th Ave
Wheat Ridge, CO 80033
Telephone Number: 303-433-0479
Email Address: dcoloccia@eagle-enviro.com

Project Manager: D. Coloccia
Project Name: Moonraker 6-27
Project Number: -
Samples Collected By: AM

Sample ID Description	Date Sampled	Time Sampled	# of Containers	Preservative				Matrix			Analysis				Sample Instructions	
				Unpreserved	HCl	HNO ₃	Other	Groundwater	Soil	Air Summa Canister #	Other	BTEXN	TMBS	TPH		EC/PH
AST-B01C3"	2/3/23	1000	2	X					X				X	X	X	1
AST-B02C3"		1001														2
PW-B01C3"		1002														3
SEP-B01C3"		1003														4
COM-B01C3"		1004														5
COM-B02C3"		1005														6
FL-B02C4'		1006														7
FL-B03C4'		1007														8
FL-B04C4'		1008														9
PW-B01C3"		1009														10
PW-B01C3"		1010														

Relinquished By: *[Signature]* Date: 2/3/23 Time: 1406
Relinquished By: *[Signature]* Date: 02/03/23 Time: 1406

Turnaround Time: Same Day ☐ 24 Hr ☐ 48 Hr ☐ 72 Hr ☒ Standard

Date Results Needed

Temp Received: 8.0

Origins Laboratory, Inc.

[Signature]

The results in this report apply to the samples analyzed in accordance with the chain of custody document. This analytical report must be reproduced in its entirety.

Eagle Environmental Consulting, Inc.
8000 W 44th Ave
Wheat Ridge CO 80033

Dan Coloccia
Project Number: [none]
Project: Moonracker 6-27

Origins Laboratory

F-012207-01-R1
Effective Date: 01/09/12

Sample Receipt Checklist

Origins Work Order: Y302066

Client: Eagle
Client Project ID: Moore UPRC

Checklist Completed by: DE

Shipped Via: HD
(UPS, FedEx, Hand Delivered, Pick-up, etc.)

Date/time completed: 02/03/2023

Airbill #: NA

Matrix(s) Received: (Check all that apply): ☒ Soil/Solid ☐ Water ☐ Other: _____

Cooler Number/Temperature: 1 / 8.0 °C _____ / _____ °C _____ / _____ °C (Describe) _____ °C

Thermometer ID: T004

Requirement Description	Yes	No	N/A	Comments (if any)
If samples require cooling, was the temperature between 0°C to ≤ 6°C ⁽¹⁾ ?		<input checked="" type="checkbox"/>		
Is there ice present (document if blue ice is used)		<input checked="" type="checkbox"/>		
Are custody seals present on cooler? (if so, document in comments if they are signed and dated, broken or intact)		<input checked="" type="checkbox"/>		
Are custody seals present on each sample container? (if so, document in comments if they are signed and dated, broken or intact)		<input checked="" type="checkbox"/>		
Were all samples received intact ⁽¹⁾ ?	<input checked="" type="checkbox"/>			
Was adequate sample volume provided ⁽¹⁾ ?	<input checked="" type="checkbox"/>			
Are short holding time analytes or samples with HTs due within 48 hours present ⁽¹⁾ ?		<input checked="" type="checkbox"/>		
Is a chain-of-custody (COC) present and filled out completely ⁽¹⁾ ?	<input checked="" type="checkbox"/>			
Does the COC agree with the number and type of sample bottles received ⁽¹⁾ ?	<input checked="" type="checkbox"/>			
Do the sample IDs on the bottle labels match the COC ⁽¹⁾ ?	<input checked="" type="checkbox"/>			
Is the COC properly relinquished by the client with date and time recorded ⁽¹⁾ ?	<input checked="" type="checkbox"/>			
For volatiles in water – is there headspace (> ¼ inch bubble) present? If yes, contact client and note in narrative.			<input checked="" type="checkbox"/>	
Are samples preserved that require preservation and was it checked ⁽¹⁾ ? (note ID of confirmation instrument used in comments) / (preservation is not confirmed for subcontracted analyses in order to insure sample integrity)/(pH <2 for samples preserved with HNO ₃ , HCL, H ₂ SO ₄) / (pH >10 for samples preserved with NaAsO ₂ +NaOH, ZnAc+NaOH)			<input checked="" type="checkbox"/>	
Additional Comments (if any):				

⁽¹⁾ If NO, then contact the client before proceeding with analysis and note date, time and person contacted as well as the corrective action to in the additional comments (above) and the case narrative.

Reviewed by (Project Manager) [Signature]

2/6/23
Date/Time Reviewed

Origins Laboratory, Inc.

[Signature]

The results in this report apply to the samples analyzed in accordance with the chain of custody document. This analytical report must be reproduced in its entirety.

Eagle Environmental Consulting, Inc.
8000 W 44th Ave
Wheat Ridge CO 80033

Dan Coloccia
Project Number: [none]
Project: Moonracker 6-27

Ast-B01@3"
2/3/2023 10:00:00AM

Analyte	Result	Reporting Limit	Units	Dilution	Batch	Analyst	Prepared	Analyzed	Notes
---------	--------	-----------------	-------	----------	-------	---------	----------	----------	-------

Origins Laboratory, Inc.
Y302060-01 (Soil)

Boron (DTPA Sorbitol)

Boron	ND	0.100	mg/L	1	B3B0602	KAP	02/06/2023	02/07/2023	
-------	----	-------	------	---	---------	-----	------------	------------	--

DRO/ORO by EPA 8015D

Diesel (C10-C28)	ND	25.0	mg/kg	1	B3B0601	ZZZ	02/06/2023	02/06/2023	U
Residual Range Organics (C28-C40)	ND	100	"	"	"	ZZZ	"	"	U

Surrogate: o-Terphenyl	105 %	50-150			"	"	"	
------------------------	-------	--------	--	--	---	---	---	--

GBTEX+TMBs by 8260D

1,2,4-Trimethylbenzene	ND	0.00200	mg/kg	1	B3B0332	JSM	02/03/2023	02/06/2023	U
1,3,5-Trimethylbenzene	ND	0.00200	"	"	"	JSM	"	"	U
Benzene	ND	0.00200	"	"	"	JSM	"	"	U
Ethylbenzene	ND	0.00200	"	"	"	JSM	"	"	U
Naphthalene	ND	0.00380	"	"	"	JSM	"	"	U
Toluene	ND	0.00200	"	"	"	JSM	"	"	U
Xylenes, total	ND	0.00200	"	"	"	JSM	"	"	U
Gasoline Range Hydrocarbons	ND	0.200	"	"	"	JSM	"	"	U

Surrogate: 1,2-Dichloroethane-d4	110 %	70-130			"	"	"
Surrogate: Toluene-d8	98.4 %	70-130			"	"	"
Surrogate: 4-Bromofluorobenzene	92.5 %	70-130			"	"	"

Origins Laboratory, Inc.



The results in this report apply to the samples analyzed in accordance with the chain of custody document. This analytical report must be reproduced in its entirety.

Eagle Environmental Consulting, Inc.
8000 W 44th Ave
Wheat Ridge CO 80033

Dan Coloccia
Project Number: [none]
Project: Moonracker 6-27

Ast-B01@3"
2/3/2023 10:00:00AM

Analyte	Result	Reporting Limit	Units	Dilution	Batch	Analyst	Prepared	Analyzed	Notes
---------	--------	-----------------	-------	----------	-------	---------	----------	----------	-------

Origins Laboratory, Inc.
Y302060-01 (Soil)

Metals by Saturated Paste by EPA 6010

Calcium	1.48	0.499	meq/L	10	[CALC]	KAP	02/06/2023	02/07/2023
Magnesium	ND	0.823	"	"	"	KAP	"	"
Sodium	0.576	0.435	"	"	"	KAP	"	"

pH in Soil by 9045D

pH	8.14		pH Units	1	B3B0606	HJD	02/06/2023	02/07/2023
----	------	--	----------	---	---------	-----	------------	------------

SAR by 20B Saturated Paste

SAR	0.573		SAR	1	B3B0603	KAP	02/06/2023	02/07/2023
-----	-------	--	-----	---	---------	-----	------------	------------

Specific Conductance Mod. 9050A

Specific Conductance (EC)	0.331	0.00500	mmhos/cm	1	B3B0606	HJD	02/06/2023	02/07/2023
---------------------------	-------	---------	----------	---	---------	-----	------------	------------

Origins Laboratory, Inc.



The results in this report apply to the samples analyzed in accordance with the chain of custody document. This analytical report must be reproduced in its entirety.

Eagle Environmental Consulting, Inc.
8000 W 44th Ave
Wheat Ridge CO 80033

Dan Coloccia
Project Number: [none]
Project: Moonracker 6-27

Ast-B02@3"
2/3/2023 10:01:00AM

Analyte	Result	Reporting Limit	Units	Dilution	Batch	Analyst	Prepared	Analyzed	Notes
---------	--------	-----------------	-------	----------	-------	---------	----------	----------	-------

Origins Laboratory, Inc.
Y302060-02 (Soil)

Boron (DTPA Sorbitol)

Boron	0.137	0.101	mg/L	1	B3B0602	KAP	02/06/2023	02/07/2023	
-------	-------	-------	------	---	---------	-----	------------	------------	--

DRO/ORO by EPA 8015D

Diesel (C10-C28)	ND	25.0	mg/kg	1	B3B0601	ZZZ	02/06/2023	02/06/2023	U
Residual Range Organics (C28-C40)	ND	100	"	"	"	ZZZ	"	"	U

Surrogate: o-Terphenyl	92.3 %	50-150			"	"	"	
------------------------	--------	--------	--	--	---	---	---	--

GBTEX+TMBs by 8260D

1,2,4-Trimethylbenzene	ND	0.00200	mg/kg	1	B3B0332	JSM	02/03/2023	02/06/2023	U
1,3,5-Trimethylbenzene	ND	0.00200	"	"	"	JSM	"	"	U
Benzene	ND	0.00200	"	"	"	JSM	"	"	U
Ethylbenzene	ND	0.00200	"	"	"	JSM	"	"	U
Naphthalene	ND	0.00380	"	"	"	JSM	"	"	U
Toluene	ND	0.00200	"	"	"	JSM	"	"	U
Xylenes, total	ND	0.00200	"	"	"	JSM	"	"	U
Gasoline Range Hydrocarbons	ND	0.200	"	"	"	JSM	"	"	U

Surrogate: 1,2-Dichloroethane-d4	107 %	70-130			"	"	"
Surrogate: Toluene-d8	96.3 %	70-130			"	"	"
Surrogate: 4-Bromofluorobenzene	91.5 %	70-130			"	"	"

Origins Laboratory, Inc.



The results in this report apply to the samples analyzed in accordance with the chain of custody document. This analytical report must be reproduced in its entirety.

Eagle Environmental Consulting, Inc.
8000 W 44th Ave
Wheat Ridge CO 80033

Dan Coloccia
Project Number: [none]
Project: Moonracker 6-27

Ast-B02@3"
2/3/2023 10:01:00AM

Analyte	Result	Limit	Units	Dilution	Batch	Analyst	Prepared	Analyzed	Notes
---------	--------	-------	-------	----------	-------	---------	----------	----------	-------

Origins Laboratory, Inc.
Y302060-02 (Soil)

Metals by Saturated Paste by EPA 6010

Calcium	2.34	0.499	meq/L	10	[CALC]	KAP	02/06/2023	02/07/2023
Magnesium	ND	0.823	"	"	"	KAP	"	"
Sodium	0.912	0.435	"	"	"	KAP	"	"

pH in Soil by 9045D

pH	8.22		pH Units	1	B3B0606	HJD	02/06/2023	02/07/2023
----	------	--	----------	---	---------	-----	------------	------------

SAR by 20B Saturated Paste

SAR	0.751		SAR	1	B3B0603	KAP	02/06/2023	02/07/2023
-----	-------	--	-----	---	---------	-----	------------	------------

Specific Conductance Mod. 9050A

Specific Conductance (EC)	0.447	0.00500	mmhos/cm	1	B3B0606	HJD	02/06/2023	02/07/2023
---------------------------	-------	---------	----------	---	---------	-----	------------	------------

Origins Laboratory, Inc.



The results in this report apply to the samples analyzed in accordance with the chain of custody document. This analytical report must be reproduced in its entirety.

Eagle Environmental Consulting, Inc.
8000 W 44th Ave
Wheat Ridge CO 80033

Dan Coloccia
Project Number: [none]
Project: Moonracker 6-27

PW-B01@3"
2/3/2023 10:02:00AM

Analyte	Result	Reporting Limit	Units	Dilution	Batch	Analyst	Prepared	Analyzed	Notes
---------	--------	-----------------	-------	----------	-------	---------	----------	----------	-------

Origins Laboratory, Inc.
Y302060-03 (Soil)

Boron (DTPA Sorbitol)

Boron	ND	0.0989	mg/L	1	B3B0602	KAP	02/06/2023	02/07/2023	
-------	----	--------	------	---	---------	-----	------------	------------	--

DRO/ORO by EPA 8015D

Diesel (C10-C28)	ND	25.0	mg/kg	1	B3B0601	ZZZ	02/06/2023	02/06/2023	U
Residual Range Organics (C28-C40)	ND	100	"	"	"	ZZZ	"	"	U

Surrogate: o-Terphenyl	98.1 %	50-150			"	"	"	
------------------------	--------	--------	--	--	---	---	---	--

GBTEX+TMBs by 8260D

1,2,4-Trimethylbenzene	ND	0.00200	mg/kg	1	B3B0332	JSM	02/03/2023	02/06/2023	U
1,3,5-Trimethylbenzene	ND	0.00200	"	"	"	JSM	"	"	U
Benzene	ND	0.00200	"	"	"	JSM	"	"	U
Ethylbenzene	ND	0.00200	"	"	"	JSM	"	"	U
Naphthalene	ND	0.00380	"	"	"	JSM	"	"	U
Toluene	ND	0.00200	"	"	"	JSM	"	"	U
Xylenes, total	ND	0.00200	"	"	"	JSM	"	"	U
Gasoline Range Hydrocarbons	ND	0.200	"	"	"	JSM	"	"	U

Surrogate: 1,2-Dichloroethane-d4	108 %	70-130			"	"	"	
Surrogate: Toluene-d8	99.2 %	70-130			"	"	"	
Surrogate: 4-Bromofluorobenzene	90.4 %	70-130			"	"	"	

Origins Laboratory, Inc.



The results in this report apply to the samples analyzed in accordance with the chain of custody document. This analytical report must be reproduced in its entirety.

Eagle Environmental Consulting, Inc.
8000 W 44th Ave
Wheat Ridge CO 80033

Dan Coloccia
Project Number: [none]
Project: Moonracker 6-27

PW-B01@3"
2/3/2023 10:02:00AM

Analyte	Result	Limit	Units	Dilution	Batch	Analyst	Prepared	Analyzed	Notes
---------	--------	-------	-------	----------	-------	---------	----------	----------	-------

Origins Laboratory, Inc.
Y302060-03 (Soil)

Metals by Saturated Paste by EPA 6010

Calcium	0.572	0.499	meq/L	10	[CALC]	KAP	02/06/2023	02/07/2023
Magnesium	ND	0.823	"	"	"	KAP	"	"
Sodium	3.40	0.435	"	"	"	KAP	"	"

pH in Soil by 9045D

pH	8.33		pH Units	1	B3B0606	HJD	02/06/2023	02/07/2023
----	------	--	----------	---	---------	-----	------------	------------

SAR by 20B Saturated Paste

SAR	5.40		SAR	1	B3B0603	KAP	02/06/2023	02/07/2023
-----	------	--	-----	---	---------	-----	------------	------------

Specific Conductance Mod. 9050A

Specific Conductance (EC)	0.485	0.00500	mmhos/cm	1	B3B0606	HJD	02/06/2023	02/07/2023
---------------------------	-------	---------	----------	---	---------	-----	------------	------------

Origins Laboratory, Inc.



The results in this report apply to the samples analyzed in accordance with the chain of custody document. This analytical report must be reproduced in its entirety.

Eagle Environmental Consulting, Inc.
8000 W 44th Ave
Wheat Ridge CO 80033

Dan Coloccia
Project Number: [none]
Project: Moonracker 6-27

SEP-B01@3"
2/3/2023 10:03:00AM

Analyte	Result	Reporting Limit	Units	Dilution	Batch	Analyst	Prepared	Analyzed	Notes
---------	--------	-----------------	-------	----------	-------	---------	----------	----------	-------

Origins Laboratory, Inc.
Y302060-04 (Soil)

Boron (DTPA Sorbitol)

Boron	0.123	0.100	mg/L	1	B3B0602	KAP	02/06/2023	02/07/2023	
-------	-------	-------	------	---	---------	-----	------------	------------	--

DRO/ORO by EPA 8015D

Diesel (C10-C28)	ND	25.0	mg/kg	1	B3B0601	ZZZ	02/06/2023	02/06/2023	U
Residual Range Organics (C28-C40)	ND	100	"	"	"	ZZZ	"	"	U

Surrogate: o-Terphenyl	96.4 %	50-150			"	"	"	
------------------------	--------	--------	--	--	---	---	---	--

GBTEX+TMBs by 8260D

1,2,4-Trimethylbenzene	ND	0.00200	mg/kg	1	B3B0332	JSM	02/03/2023	02/06/2023	U
1,3,5-Trimethylbenzene	ND	0.00200	"	"	"	JSM	"	"	U
Benzene	ND	0.00200	"	"	"	JSM	"	"	U
Ethylbenzene	ND	0.00200	"	"	"	JSM	"	"	U
Naphthalene	ND	0.00380	"	"	"	JSM	"	"	U
Toluene	ND	0.00200	"	"	"	JSM	"	"	U
Xylenes, total	ND	0.00200	"	"	"	JSM	"	"	U
Gasoline Range Hydrocarbons	0.592	0.200	"	"	"	JSM	"	"	

Surrogate: 1,2-Dichloroethane-d4	109 %	70-130			"	"	"
Surrogate: Toluene-d8	98.4 %	70-130			"	"	"
Surrogate: 4-Bromofluorobenzene	88.1 %	70-130			"	"	"

Origins Laboratory, Inc.



The results in this report apply to the samples analyzed in accordance with the chain of custody document. This analytical report must be reproduced in its entirety.

Eagle Environmental Consulting, Inc.
8000 W 44th Ave
Wheat Ridge CO 80033

Dan Coloccia
Project Number: [none]
Project: Moonracker 6-27

SEP-B01@3"
2/3/2023 10:03:00AM

Analyte	Result	Reporting Limit	Units	Dilution	Batch	Analyst	Prepared	Analyzed	Notes
---------	--------	-----------------	-------	----------	-------	---------	----------	----------	-------

Origins Laboratory, Inc.
Y302060-04 (Soil)

Metals by Saturated Paste by EPA 6010

Calcium	1.37	0.499	meq/L	10	[CALC]	KAP	02/06/2023	02/07/2023
Magnesium	ND	0.823	"	"	"	KAP	"	"
Sodium	0.568	0.435	"	"	"	KAP	"	"

pH in Soil by 9045D

pH	8.03		pH Units	1	B3B0607	HJD	02/06/2023	02/07/2023
----	------	--	----------	---	---------	-----	------------	------------

SAR by 20B Saturated Paste

SAR	0.00		SAR	1	B3B0604	KAP	02/06/2023	02/07/2023
-----	------	--	-----	---	---------	-----	------------	------------

Specific Conductance Mod. 9050A

Specific Conductance (EC)	0.300	0.00500	mmhos/cm	1	B3B0607	HJD	02/06/2023	02/07/2023
---------------------------	-------	---------	----------	---	---------	-----	------------	------------

Origins Laboratory, Inc.



The results in this report apply to the samples analyzed in accordance with the chain of custody document. This analytical report must be reproduced in its entirety.

Eagle Environmental Consulting, Inc.
8000 W 44th Ave
Wheat Ridge CO 80033

Dan Coloccia
Project Number: [none]
Project: Moonracker 6-27

COM-B01@3"
2/3/2023 10:04:00AM

Analyte	Result	Reporting Limit	Units	Dilution	Batch	Analyst	Prepared	Analyzed	Notes
---------	--------	-----------------	-------	----------	-------	---------	----------	----------	-------

Origins Laboratory, Inc.
Y302060-05 (Soil)

Boron (DTPA Sorbitol)

Boron	0.346	0.102	mg/L	1	B3B0602	KAP	02/06/2023	02/07/2023	
-------	-------	-------	------	---	---------	-----	------------	------------	--

DRO/ORO by EPA 8015D

Diesel (C10-C28)	ND	25.0	mg/kg	1	B3B0601	ZZZ	02/06/2023	02/06/2023	U
Residual Range Organics (C28-C40)	ND	100	"	"	"	ZZZ	"	"	U

Surrogate: o-Terphenyl	88.1 %	50-150			"	"	"	
------------------------	--------	--------	--	--	---	---	---	--

GBTEX+TMBs by 8260D

1,2,4-Trimethylbenzene	ND	0.00200	mg/kg	1	B3B0332	JSM	02/03/2023	02/06/2023	U
1,3,5-Trimethylbenzene	ND	0.00200	"	"	"	JSM	"	"	U
Benzene	ND	0.00200	"	"	"	JSM	"	"	U
Ethylbenzene	ND	0.00200	"	"	"	JSM	"	"	U
Naphthalene	ND	0.00380	"	"	"	JSM	"	"	U
Toluene	ND	0.00200	"	"	"	JSM	"	"	U
Xylenes, total	ND	0.00200	"	"	"	JSM	"	"	U
Gasoline Range Hydrocarbons	ND	0.200	"	"	"	JSM	"	"	U

Surrogate: 1,2-Dichloroethane-d4	108 %	70-130			"	"	"
Surrogate: Toluene-d8	98.9 %	70-130			"	"	"
Surrogate: 4-Bromofluorobenzene	89.2 %	70-130			"	"	"

Origins Laboratory, Inc.



The results in this report apply to the samples analyzed in accordance with the chain of custody document. This analytical report must be reproduced in its entirety.

Eagle Environmental Consulting, Inc.
8000 W 44th Ave
Wheat Ridge CO 80033

Dan Coloccia
Project Number: [none]
Project: Moonracker 6-27

COM-B01@3"
2/3/2023 10:04:00AM

Analyte	Result	Limit	Units	Dilution	Batch	Analyst	Prepared	Analyzed	Notes
---------	--------	-------	-------	----------	-------	---------	----------	----------	-------

Origins Laboratory, Inc.
Y302060-05 (Soil)

Metals by Saturated Paste by EPA 6010

Calcium	2.68	0.499	meq/L	10	[CALC]	KAP	02/06/2023	02/07/2023
Magnesium	1.08	0.823	"	"	"	KAP	"	"
Sodium	0.798	0.435	"	"	"	KAP	"	"

pH in Soil by 9045D

pH	8.12		pH Units	1	B3B0607	HJD	02/06/2023	02/07/2023
----	------	--	----------	---	---------	-----	------------	------------

SAR by 20B Saturated Paste

SAR	0.583		SAR	1	B3B0604	KAP	02/06/2023	02/07/2023
-----	-------	--	-----	---	---------	-----	------------	------------

Specific Conductance Mod. 9050A

Specific Conductance (EC)	0.556	0.00500	mmhos/cm	1	B3B0607	HJD	02/06/2023	02/07/2023
---------------------------	-------	---------	----------	---	---------	-----	------------	------------

Origins Laboratory, Inc.



The results in this report apply to the samples analyzed in accordance with the chain of custody document. This analytical report must be reproduced in its entirety.

Eagle Environmental Consulting, Inc.
8000 W 44th Ave
Wheat Ridge CO 80033

Dan Coloccia
Project Number: [none]
Project: Moonracker 6-27

COM-B02@3"
2/3/2023 10:05:00AM

Analyte	Result	Reporting Limit	Units	Dilution	Batch	Analyst	Prepared	Analyzed	Notes
---------	--------	-----------------	-------	----------	-------	---------	----------	----------	-------

Origins Laboratory, Inc.
Y302060-06 (Soil)

Boron (DTPA Sorbitol)

Boron	0.255	0.0997	mg/L	1	B3B0602	KAP	02/06/2023	02/07/2023	
-------	-------	--------	------	---	---------	-----	------------	------------	--

DRO/ORO by EPA 8015D

Diesel (C10-C28)	ND	25.0	mg/kg	1	B3B0601	ZZZ	02/06/2023	02/06/2023	U
Residual Range Organics (C28-C40)	ND	100	"	"	"	ZZZ	"	"	U

Surrogate: o-Terphenyl	94.9 %	50-150			"	"	"	
------------------------	--------	--------	--	--	---	---	---	--

GBTEX+TMBs by 8260D

1,2,4-Trimethylbenzene	ND	0.00200	mg/kg	1	B3B0332	JSM	02/03/2023	02/06/2023	U
1,3,5-Trimethylbenzene	ND	0.00200	"	"	"	JSM	"	"	U
Benzene	ND	0.00200	"	"	"	JSM	"	"	U
Ethylbenzene	ND	0.00200	"	"	"	JSM	"	"	U
Naphthalene	ND	0.00380	"	"	"	JSM	"	"	U
Toluene	ND	0.00200	"	"	"	JSM	"	"	U
Xylenes, total	ND	0.00200	"	"	"	JSM	"	"	U
Gasoline Range Hydrocarbons	ND	0.200	"	"	"	JSM	"	"	U

Surrogate: 1,2-Dichloroethane-d4	108 %	70-130			"	"	"
Surrogate: Toluene-d8	98.4 %	70-130			"	"	"
Surrogate: 4-Bromofluorobenzene	91.3 %	70-130			"	"	"

Origins Laboratory, Inc.



The results in this report apply to the samples analyzed in accordance with the chain of custody document. This analytical report must be reproduced in its entirety.

Eagle Environmental Consulting, Inc.
8000 W 44th Ave
Wheat Ridge CO 80033

Dan Coloccia
Project Number: [none]
Project: Moonracker 6-27

COM-B02@3"
2/3/2023 10:05:00AM

Analyte	Result	Reporting Limit	Units	Dilution	Batch	Analyst	Prepared	Analyzed	Notes
---------	--------	-----------------	-------	----------	-------	---------	----------	----------	-------

Origins Laboratory, Inc.
Y302060-06 (Soil)

Metals by Saturated Paste by EPA 6010

Calcium	1.73	0.499	meq/L	10	[CALC]	KAP	02/06/2023	02/07/2023
Magnesium	ND	0.823	"	"	"	KAP	"	"
Sodium	0.498	0.435	"	"	"	KAP	"	"

pH in Soil by 9045D

pH	7.93		pH Units	1	B3B0607	HJD	02/06/2023	02/07/2023
----	------	--	----------	---	---------	-----	------------	------------

SAR by 20B Saturated Paste

SAR	0.450		SAR	1	B3B0604	KAP	02/06/2023	02/07/2023
-----	-------	--	-----	---	---------	-----	------------	------------

Specific Conductance Mod. 9050A

Specific Conductance (EC)	0.369	0.00500	mmhos/cm	1	B3B0607	HJD	02/06/2023	02/07/2023
---------------------------	-------	---------	----------	---	---------	-----	------------	------------

Origins Laboratory, Inc.



The results in this report apply to the samples analyzed in accordance with the chain of custody document. This analytical report must be reproduced in its entirety.

Eagle Environmental Consulting, Inc.
8000 W 44th Ave
Wheat Ridge CO 80033

Dan Coloccia
Project Number: [none]
Project: Moonracker 6-27

FL-B02@4'

2/3/2023 10:06:00AM

Analyte	Result	Reporting Limit	Units	Dilution	Batch	Analyst	Prepared	Analyzed	Notes
---------	--------	-----------------	-------	----------	-------	---------	----------	----------	-------

Origins Laboratory, Inc.
Y302060-07 (Soil)

Boron (DTPA Sorbitol)

Boron	0.466	0.101	mg/L	1	B3B0602	KAP	02/06/2023	02/07/2023	
-------	-------	-------	------	---	---------	-----	------------	------------	--

DRO/ORO by EPA 8015D

Diesel (C10-C28)	ND	25.0	mg/kg	1	B3B0601	ZZZ	02/06/2023	02/06/2023	U
Residual Range Organics (C28-C40)	ND	100	"	"	"	ZZZ	"	"	U

Surrogate: o-Terphenyl	90.9 %	50-150			"	"	"	
------------------------	--------	--------	--	--	---	---	---	--

GBTEX+TMBs by 8260D

1,2,4-Trimethylbenzene	ND	0.00200	mg/kg	1	B3B0332	JSM	02/03/2023	02/06/2023	U
1,3,5-Trimethylbenzene	ND	0.00200	"	"	"	JSM	"	"	U
Benzene	ND	0.00200	"	"	"	JSM	"	"	U
Ethylbenzene	ND	0.00200	"	"	"	JSM	"	"	U
Naphthalene	ND	0.00380	"	"	"	JSM	"	"	U
Toluene	ND	0.00200	"	"	"	JSM	"	"	U
Xylenes, total	ND	0.00200	"	"	"	JSM	"	"	U
Gasoline Range Hydrocarbons	ND	0.200	"	"	"	JSM	"	"	U

Surrogate: 1,2-Dichloroethane-d4	108 %	70-130			"	"	"
Surrogate: Toluene-d8	98.9 %	70-130			"	"	"
Surrogate: 4-Bromofluorobenzene	86.6 %	70-130			"	"	"

Origins Laboratory, Inc.



The results in this report apply to the samples analyzed in accordance with the chain of custody document. This analytical report must be reproduced in its entirety.

Eagle Environmental Consulting, Inc.
8000 W 44th Ave
Wheat Ridge CO 80033

Dan Coloccia
Project Number: [none]
Project: Moonracker 6-27

FL-B02@4'

2/3/2023 10:06:00AM

Analyte	Result	Limit	Units	Dilution	Batch	Analyst	Prepared	Analyzed	Notes
---------	--------	-------	-------	----------	-------	---------	----------	----------	-------

Origins Laboratory, Inc.
Y302060-07 (Soil)

Metals by Saturated Paste by EPA 6010

Calcium	2.44	0.499	meq/L	10	[CALC]	KAP	02/06/2023	02/07/2023
Magnesium	1.61	0.823	"	"	"	KAP	"	"
Sodium	4.13	0.435	"	"	"	KAP	"	"

pH in Soil by 9045D

pH	8.18		pH Units	1	B3B0607	HJD	02/06/2023	02/07/2023
----	------	--	----------	---	---------	-----	------------	------------

SAR by 20B Saturated Paste

SAR	2.90		SAR	1	B3B0604	KAP	02/06/2023	02/07/2023
-----	------	--	-----	---	---------	-----	------------	------------

Specific Conductance Mod. 9050A

Specific Conductance (EC)	1.02	0.00500	mmhos/cm	1	B3B0607	HJD	02/06/2023	02/07/2023
---------------------------	------	---------	----------	---	---------	-----	------------	------------

Origins Laboratory, Inc.



The results in this report apply to the samples analyzed in accordance with the chain of custody document. This analytical report must be reproduced in its entirety.

Eagle Environmental Consulting, Inc.
8000 W 44th Ave
Wheat Ridge CO 80033

Dan Coloccia
Project Number: [none]
Project: Moonracker 6-27

FL-B03@4'
2/3/2023 10:07:00AM

Analyte	Result	Limit	Units	Dilution	Batch	Analyst	Prepared	Analyzed	Notes
---------	--------	-------	-------	----------	-------	---------	----------	----------	-------

Origins Laboratory, Inc.
Y302060-08 (Soil)

Boron (DTPA Sorbitol)

Boron	ND	1.02	mg/L	10	B3B0602	KAP	02/06/2023	02/07/2023	
-------	----	------	------	----	---------	-----	------------	------------	--

DRO/ORO by EPA 8015D

Diesel (C10-C28)	ND	25.0	mg/kg	1	B3B0601	ZZZ	02/06/2023	02/06/2023	U
Residual Range Organics (C28-C40)	ND	100	"	"	"	ZZZ	"	"	U

Surrogate: o-Terphenyl	89.3 %	50-150			"	"	"	
------------------------	--------	--------	--	--	---	---	---	--

GBTEX+TMBs by 8260D

1,2,4-Trimethylbenzene	ND	0.00200	mg/kg	1	B3B0332	JSM	02/03/2023	02/06/2023	U
1,3,5-Trimethylbenzene	ND	0.00200	"	"	"	JSM	"	"	U
Benzene	ND	0.00200	"	"	"	JSM	"	"	U
Ethylbenzene	ND	0.00200	"	"	"	JSM	"	"	U
Naphthalene	ND	0.00380	"	"	"	JSM	"	"	U
Toluene	ND	0.00200	"	"	"	JSM	"	"	U
Xylenes, total	ND	0.00200	"	"	"	JSM	"	"	U
Gasoline Range Hydrocarbons	ND	0.200	"	"	"	JSM	"	"	U

Surrogate: 1,2-Dichloroethane-d4	107 %	70-130			"	"	"
Surrogate: Toluene-d8	98.2 %	70-130			"	"	"
Surrogate: 4-Bromofluorobenzene	89.8 %	70-130			"	"	"

Origins Laboratory, Inc.



The results in this report apply to the samples analyzed in accordance with the chain of custody document. This analytical report must be reproduced in its entirety.

Eagle Environmental Consulting, Inc.
8000 W 44th Ave
Wheat Ridge CO 80033

Dan Coloccia
Project Number: [none]
Project: Moonracker 6-27

FL-B03@4'

2/3/2023 10:07:00AM

Analyte	Result	Reporting Limit	Units	Dilution	Batch	Analyst	Prepared	Analyzed	Notes
---------	--------	-----------------	-------	----------	-------	---------	----------	----------	-------

Origins Laboratory, Inc.
Y302060-08 (Soil)

Metals by Saturated Paste by EPA 6010

Calcium	1.59	0.499	meq/L	10	[CALC]	KAP	02/06/2023	02/07/2023
Magnesium	ND	0.823	"	"	"	KAP	"	"
Sodium	ND	0.435	"	"	"	KAP	"	"

pH in Soil by 9045D

pH	7.76		pH Units	1	B3B0607	HJD	02/06/2023	02/07/2023
----	------	--	----------	---	---------	-----	------------	------------

SAR by 20B Saturated Paste

SAR	0.101		SAR	1	B3B0604	KAP	02/06/2023	02/07/2023
-----	-------	--	-----	---	---------	-----	------------	------------

Specific Conductance Mod. 9050A

Specific Conductance (EC)	0.338	0.00500	mmhos/cm	1	B3B0607	HJD	02/06/2023	02/07/2023
---------------------------	-------	---------	----------	---	---------	-----	------------	------------

Origins Laboratory, Inc.



The results in this report apply to the samples analyzed in accordance with the chain of custody document. This analytical report must be reproduced in its entirety.

Eagle Environmental Consulting, Inc.
8000 W 44th Ave
Wheat Ridge CO 80033

Dan Coloccia
Project Number: [none]
Project: Moonracker 6-27

FL-B04@4'

2/3/2023 10:08:00AM

Analyte	Result	Reporting Limit	Units	Dilution	Batch	Analyst	Prepared	Analyzed	Notes
---------	--------	-----------------	-------	----------	-------	---------	----------	----------	-------

Origins Laboratory, Inc.
Y302060-09 (Soil)

Boron (DTPA Sorbitol)

Boron	0.470	0.101	mg/L	1	B3B0602	KAP	02/06/2023	02/07/2023	
-------	-------	-------	------	---	---------	-----	------------	------------	--

DRO/ORO by EPA 8015D

Diesel (C10-C28)	ND	25.0	mg/kg	1	B3B0601	ZZZ	02/06/2023	02/06/2023	U
Residual Range Organics (C28-C40)	ND	100	"	"	"	ZZZ	"	"	U

Surrogate: o-Terphenyl	89.4 %	50-150			"	"	"	
------------------------	--------	--------	--	--	---	---	---	--

GBTEX+TMBs by 8260D

1,2,4-Trimethylbenzene	ND	0.00200	mg/kg	1	B3B0332	JSM	02/03/2023	02/06/2023	U
1,3,5-Trimethylbenzene	ND	0.00200	"	"	"	JSM	"	"	U
Benzene	ND	0.00200	"	"	"	JSM	"	"	U
Ethylbenzene	ND	0.00200	"	"	"	JSM	"	"	U
Naphthalene	ND	0.00380	"	"	"	JSM	"	"	U
Toluene	ND	0.00200	"	"	"	JSM	"	"	U
Xylenes, total	ND	0.00200	"	"	"	JSM	"	"	U
Gasoline Range Hydrocarbons	ND	0.200	"	"	"	JSM	"	"	U

Surrogate: 1,2-Dichloroethane-d4	111 %	70-130			"	"	"
Surrogate: Toluene-d8	97.2 %	70-130			"	"	"
Surrogate: 4-Bromofluorobenzene	89.7 %	70-130			"	"	"

Origins Laboratory, Inc.



The results in this report apply to the samples analyzed in accordance with the chain of custody document. This analytical report must be reproduced in its entirety.

Eagle Environmental Consulting, Inc.
8000 W 44th Ave
Wheat Ridge CO 80033

Dan Coloccia
Project Number: [none]
Project: Moonracker 6-27

FL-B04@4'

2/3/2023 10:08:00AM

Analyte	Result	Limit	Units	Dilution	Batch	Analyst	Prepared	Analyzed	Notes
---------	--------	-------	-------	----------	-------	---------	----------	----------	-------

Origins Laboratory, Inc.
Y302060-09 (Soil)

Metals by Saturated Paste by EPA 6010

Calcium	2.13	0.499	meq/L	10	[CALC]	KAP	02/06/2023	02/07/2023
Magnesium	1.00	0.823	"	"	"	KAP	"	"
Sodium	0.880	0.435	"	"	"	KAP	"	"

pH in Soil by 9045D

pH	8.09		pH Units	1	B3B0607	HJD	02/06/2023	02/07/2023
----	------	--	----------	---	---------	-----	------------	------------

SAR by 20B Saturated Paste

SAR	0.704		SAR	1	B3B0604	KAP	02/06/2023	02/07/2023
-----	-------	--	-----	---	---------	-----	------------	------------

Specific Conductance Mod. 9050A

Specific Conductance (EC)	0.486	0.00500	mmhos/cm	1	B3B0607	HJD	02/06/2023	02/07/2023
---------------------------	-------	---------	----------	---	---------	-----	------------	------------

Origins Laboratory, Inc.



The results in this report apply to the samples analyzed in accordance with the chain of custody document. This analytical report must be reproduced in its entirety.

Eagle Environmental Consulting, Inc.
8000 W 44th Ave
Wheat Ridge CO 80033

Dan Coloccia
Project Number: [none]
Project: Moonracker 6-27

Volatile Organic Compounds by GC/MS SW846 8260D - Quality Control

Origins Laboratory, Inc.

Analyte	Result	Reporting Limit	Units	Spike Level	Source Result	%REC	%REC Limits	RPD	RPD Limit	Notes
Batch B3B0332 - EPA 5030 (soil)										
Blank (B3B0332-BLK1)					Prepared: 02/03/2023 Analyzed: 02/06/2023					
1,2,4-Trimethylbenzene	ND	0.00200	mg/kg							U
1,3,5-Trimethylbenzene	ND	0.00200	"							U
Benzene	ND	0.00200	"							U
Ethylbenzene	ND	0.00200	"							U
Naphthalene	ND	0.00380	"							U
Toluene	ND	0.00200	"							U
Xylenes, total	ND	0.00200	"							U
Gasoline Range Hydrocarbons	ND	0.200	"							U
Surrogate: 1,2-Dichloroethane-d4	0.14		"	0.125	110		70-130			
Surrogate: Toluene-d8	0.12		"	0.125	94.8		70-130			
Surrogate: 4-Bromofluorobenzene	0.11		"	0.125	91.7		70-130			

Origins Laboratory, Inc.



The results in this report apply to the samples analyzed in accordance with the chain of custody document. This analytical report must be reproduced in its entirety.

Eagle Environmental Consulting, Inc.
8000 W 44th Ave
Wheat Ridge CO 80033

Dan Coloccia
Project Number: [none]
Project: Moonracker 6-27

Volatile Organic Compounds by GC/MS SW846 8260D - Quality Control

Origins Laboratory, Inc.

Analyte	Result	Reporting Limit	Units	Spike Level	Source Result	%REC	%REC Limits	RPD	RPD Limit	Notes
Batch B3B0332 - EPA 5030 (soil)										
LCS (B3B0332-BS1)					Prepared: 02/03/2023 Analyzed: 02/06/2023					
1,2,4-Trimethylbenzene	0.0996	0.00200	mg/kg	0.100		99.6	70-130			
1,3,5-Trimethylbenzene	0.106	0.00200	"	0.100		106	70-130			
Benzene	0.0982	0.00200	"	0.100		98.2	70-130			
Ethylbenzene	0.108	0.00200	"	0.100		108	70-130			
Naphthalene	0.106	0.00380	"	0.100		106	70-130			
Toluene	0.104	0.00200	"	0.100		104	70-130			
o-Xylene	0.0998	0.00200	"	0.100		99.8	70-130			
m,p-Xylene	0.218	0.00400	"	0.200		109	70-130			
Surrogate: 1,2-Dichloroethane-d4	0.13		"	0.125		102	70-130			
Surrogate: Toluene-d8	0.13		"	0.125		100	70-130			
Surrogate: 4-Bromofluorobenzene	0.12		"	0.125		98.3	70-130			

Origins Laboratory, Inc.



The results in this report apply to the samples analyzed in accordance with the chain of custody document. This analytical report must be reproduced in its entirety.

Eagle Environmental Consulting, Inc.
8000 W 44th Ave
Wheat Ridge CO 80033

Dan Coloccia
Project Number: [none]
Project: Moonracker 6-27

Volatile Organic Compounds by GC/MS SW846 8260D - Quality Control

Origins Laboratory, Inc.

Analyte	Result	Reporting Limit	Units	Spike Level	Source Result	%REC	%REC Limits	RPD	RPD Limit	Notes
---------	--------	-----------------	-------	-------------	---------------	------	-------------	-----	-----------	-------

Batch B3B0332 - EPA 5030 (soil)

Matrix Spike (B3B0332-MS1)		Source: Y302060-01			Prepared: 02/03/2023 Analyzed: 02/06/2023					
1,2,4-Trimethylbenzene	0.0957	0.00200	mg/kg	0.100	ND	95.7	70-130			
1,3,5-Trimethylbenzene	0.101	0.00200	"	0.100	ND	101	70-130			
Benzene	0.0990	0.00200	"	0.100	ND	99.0	70-130			
Ethylbenzene	0.107	0.00200	"	0.100	ND	107	70-130			
Naphthalene	0.0924	0.00380	"	0.100	ND	92.4	70-130			
Toluene	0.104	0.00200	"	0.100	ND	104	70-130			
o-Xylene	0.0994	0.00200	"	0.100	ND	99.4	70-130			
m,p-Xylene	0.219	0.00400	"	0.200	ND	109	70-130			
Surrogate: 1,2-Dichloroethane-d4	0.13		"	0.125		105	70-130			
Surrogate: Toluene-d8	0.13		"	0.125		101	70-130			
Surrogate: 4-Bromofluorobenzene	0.12		"	0.125		97.1	70-130			

Origins Laboratory, Inc.



The results in this report apply to the samples analyzed in accordance with the chain of custody document. This analytical report must be reproduced in its entirety.

Eagle Environmental Consulting, Inc.
8000 W 44th Ave
Wheat Ridge CO 80033

Dan Coloccia
Project Number: [none]
Project: Moonracker 6-27

Volatile Organic Compounds by GC/MS SW846 8260D - Quality Control

Origins Laboratory, Inc.

Analyte	Result	Reporting Limit	Units	Spike Level	Source Result	%REC	%REC Limits	RPD	RPD Limit	Notes
Batch B3B0332 - EPA 5030 (soil)										
Matrix Spike Dup (B3B0332-MSD1)		Source: Y302060-01			Prepared: 02/03/2023 Analyzed: 02/06/2023					
1,2,4-Trimethylbenzene	0.0999	0.00200	mg/kg	0.100	ND	99.9	70-130	4.33	20	
1,3,5-Trimethylbenzene	0.106	0.00200	"	0.100	ND	106	70-130	4.29	20	
Benzene	0.0977	0.00200	"	0.100	ND	97.7	70-130	1.30	20	
Ethylbenzene	0.109	0.00200	"	0.100	ND	109	70-130	1.86	20	
Naphthalene	0.102	0.00380	"	0.100	ND	102	70-130	9.72	20	
Toluene	0.105	0.00200	"	0.100	ND	105	70-130	0.802	20	
o-Xylene	0.102	0.00200	"	0.100	ND	102	70-130	2.15	20	
m,p-Xylene	0.221	0.00400	"	0.200	ND	111	70-130	1.16	20	
Surrogate: 1,2-Dichloroethane-d4	0.13		"	0.125		103	70-130			
Surrogate: Toluene-d8	0.12		"	0.125		100	70-130			
Surrogate: 4-Bromofluorobenzene	0.12		"	0.125		97.1	70-130			

Origins Laboratory, Inc.



The results in this report apply to the samples analyzed in accordance with the chain of custody document. This analytical report must be reproduced in its entirety.

Eagle Environmental Consulting, Inc.
8000 W 44th Ave
Wheat Ridge CO 80033

Dan Coloccia
Project Number: [none]
Project: Moonracker 6-27

Volatile Organic Compounds by GC/MS SW846 8260D - Quality Control

Origins Laboratory, Inc.

Analyte	Result	Reporting Limit	Units	Spike Level	Source Result	%REC	%REC Limits	RPD	RPD Limit	Notes
Batch B3B0601 - EPA 3580										
Blank (B3B0601-BLK1)					Prepared: 02/06/2023 Analyzed: 02/07/2023					
Diesel (C10-C28)	ND	25.0	mg/kg							U
Residual Range Organics (C28-C40)	ND	100	"							U
Surrogate: o-Terphenyl	27		"	24.9		108	50-150			

Origins Laboratory, Inc.



The results in this report apply to the samples analyzed in accordance with the chain of custody document. This analytical report must be reproduced in its entirety.

Eagle Environmental Consulting, Inc.
8000 W 44th Ave
Wheat Ridge CO 80033

Dan Coloccia
Project Number: [none]
Project: Moonracker 6-27

Extractable Petroleum Hydrocarbons by 8015D - Quality Control
Origins Laboratory, Inc.

Analyte	Result	Reporting Limit	Units	Spike Level	Source Result	%REC	%REC Limits	RPD	RPD Limit	Notes
Batch B3B0601 - EPA 3580										
LCS (B3B0601-BS1)					Prepared: 02/06/2023 Analyzed: 02/06/2023					
Diesel (C10-C28)	970	50.0	mg/kg	1000		97.0	70-130			
Residual Range Organics (C28-C40)	1100	200	"	1000		110	70-130			
Surrogate: o-Terphenyl	47		"	49.8		95.4	50-150			

Origins Laboratory, Inc.



The results in this report apply to the samples analyzed in accordance with the chain of custody document. This analytical report must be reproduced in its entirety.

Eagle Environmental Consulting, Inc.
8000 W 44th Ave
Wheat Ridge CO 80033

Dan Coloccia
Project Number: [none]
Project: Moonracker 6-27

Extractable Petroleum Hydrocarbons by 8015D - Quality Control Origins Laboratory, Inc.

Analyte	Result	Reporting Limit	Units	Spike Level	Source Result	%REC	%REC Limits	RPD	RPD Limit	Notes
---------	--------	-----------------	-------	-------------	---------------	------	-------------	-----	-----------	-------

Batch B3B0601 - EPA 3580

Matrix Spike (B3B0601-MS1)		Source: Y302060-01			Prepared: 02/06/2023 Analyzed: 02/06/2023					
Diesel (C10-C28)	947	50.0	mg/kg	1000	ND	94.7	70-130			
Residual Range Organics (C28-C40)	1090	200	"	1000	ND	109	70-130			
Surrogate: o-Terphenyl	46		"	49.8		91.8	50-150			

Origins Laboratory, Inc.



The results in this report apply to the samples analyzed in accordance with the chain of custody document. This analytical report must be reproduced in its entirety.

Eagle Environmental Consulting, Inc.
8000 W 44th Ave
Wheat Ridge CO 80033

Dan Coloccia
Project Number: [none]
Project: Moonracker 6-27

Extractable Petroleum Hydrocarbons by 8015D - Quality Control
Origins Laboratory, Inc.

Analyte	Result	Reporting Limit	Units	Spike Level	Source Result	%REC	%REC Limits	RPD	RPD Limit	Notes
---------	--------	-----------------	-------	-------------	---------------	------	-------------	-----	-----------	-------

Batch B3B0601 - EPA 3580

Matrix Spike Dup (B3B0601-MSD1)		Source: Y302060-01			Prepared: 02/06/2023 Analyzed: 02/06/2023					
Diesel (C10-C28)	934	50.0	mg/kg	1000	ND	93.4	70-130	1.42	35	
Residual Range Organics (C28-C40)	1060	200	"	1000	ND	106	70-130	3.29	35	
Surrogate: o-Terphenyl	45		"	49.8		91.1	50-150			

Origins Laboratory, Inc.



The results in this report apply to the samples analyzed in accordance with the chain of custody document. This analytical report must be reproduced in its entirety.

Eagle Environmental Consulting, Inc.
8000 W 44th Ave
Wheat Ridge CO 80033

Dan Coloccia
Project Number: [none]
Project: Moonracker 6-27

Extractable Petroleum Hydrocarbons by 8015D - Quality Control

Origins Laboratory, Inc.

Analyte	Result	Reporting Limit	Units	Spike Level	Source Result	%REC	%REC Limits	RPD	RPD Limit	Notes
---------	--------	-----------------	-------	-------------	---------------	------	-------------	-----	-----------	-------

Classical Chemistry Parameters - Quality Control

Origins Laboratory, Inc.

Analyte	Result	Reporting Limit	Units	Spike Level	Source Result	%REC	%REC Limits	RPD	RPD Limit	Notes
---------	--------	-----------------	-------	-------------	---------------	------	-------------	-----	-----------	-------

Batch B3B0602 - DTPA Sorbitol Preparation

Blank (B3B0602-BLK1)

Prepared: 02/06/2023 Analyzed: 02/07/2023

Boron ND 0.100 mg/L

Duplicate (B3B0602-DUP1)

Source: Y302060-01

Prepared: 02/06/2023 Analyzed: 02/07/2023

Boron 0.0305 0.0997 mg/L 0.0322 5.49 50

Batch B3B0603 - Saturated Paste Metals

Blank (B3B0603-BLK1)

Prepared: 02/06/2023 Analyzed: 02/07/2023

SAR 0.00 SAR

Calcium PPM ND 10.0 mg/L

Magnesium PPM ND 10.0 "

Sodium PPM ND 10.0 "

Duplicate (B3B0603-DUP1)

Source: Y302060-01

Prepared: 02/06/2023 Analyzed: 02/07/2023

Calcium PPM 24.3 10.0 mg/L 29.6 19.7 50

SAR 0.00 SAR 0.573 200 200

Magnesium PPM 5.78 10.0 mg/L 6.59 13.1 50

Sodium PPM 13.0 10.0 " 13.3 2.05 50

Batch B3B0604 - Saturated Paste Metals

Blank (B3B0604-BLK1)

Prepared: 02/06/2023 Analyzed: 02/07/2023

SAR 0.00 SAR

Origins Laboratory, Inc.



The results in this report apply to the samples analyzed in accordance with the chain of custody document. This analytical report must be reproduced in its entirety.

Eagle Environmental Consulting, Inc.
8000 W 44th Ave
Wheat Ridge CO 80033

Dan Coloccia
Project Number: [none]
Project: Moonracker 6-27

Classical Chemistry Parameters - Quality Control

Origins Laboratory, Inc.

Analyte	Result	Reporting Limit	Units	Spike Level	Source Result	%REC	%REC Limits	RPD	RPD Limit	Notes
Batch B3B0604 - Saturated Paste Metals										
Blank (B3B0604-BLK1)					Prepared: 02/06/2023 Analyzed: 02/07/2023					
Calcium PPM	ND	10.0	mg/L							
Magnesium PPM	ND	10.0	"							
Sodium PPM	ND	10.0	"							
Duplicate (B3B0604-DUP1)					Source: Y302060-04		Prepared: 02/06/2023 Analyzed: 02/07/2023			
SAR	0.00		SAR		0.00				200	
Calcium PPM	29.8	10.0	mg/L		27.4			8.09	50	
Magnesium PPM	4.66	10.0	"		4.07			13.6	50	
Sodium PPM	14.4	10.0	"		13.1			9.66	50	

Origins Laboratory, Inc.



The results in this report apply to the samples analyzed in accordance with the chain of custody document. This analytical report must be reproduced in its entirety.

Eagle Environmental Consulting, Inc.
8000 W 44th Ave
Wheat Ridge CO 80033

Dan Coloccia
Project Number: [none]
Project: Moonracker 6-27

Saturated Paste - Quality Control Origins Laboratory, Inc.

Analyte	Result	Reporting Limit	Units	Spike Level	Source Result	%REC	%REC Limits	RPD	RPD Limit	Notes
---------	--------	-----------------	-------	-------------	---------------	------	-------------	-----	-----------	-------

Batch B3B0606 - Saturated Paste pH/EC

Blank (B3B0606-BLK1)

Prepared: 02/06/2023 Analyzed: 02/07/2023

Specific Conductance (EC) ND 0.00500 mmhos/cm

Duplicate (B3B0606-DUP1)

Source: Y302060-01

Prepared: 02/06/2023 Analyzed: 02/07/2023

pH	8.11		pH Units	8.14		0.369	25
Specific Conductance (EC)	0.290	0.00500	mmhos/cm	0.331		13.2	25

Batch B3B0607 - Saturated Paste pH/EC

Blank (B3B0607-BLK1)

Prepared: 02/06/2023 Analyzed: 02/07/2023

Specific Conductance (EC) ND 0.00500 mmhos/cm

Duplicate (B3B0607-DUP1)

Source: Y302060-04

Prepared: 02/06/2023 Analyzed: 02/07/2023

Specific Conductance (EC)	0.319	0.00500	mmhos/cm	0.300		5.91	25
pH	8.07		pH Units	8.03		0.497	25

Origins Laboratory, Inc.



The results in this report apply to the samples analyzed in accordance with the chain of custody document. This analytical report must be reproduced in its entirety.

Eagle Environmental Consulting, Inc.

8000 W 44th Ave

Wheat Ridge CO 80033

Dan Coloccia

Project Number: [none]

Project: Moonracker 6-27

Notes and Definitions

U Sample is Non-Detect.

ND Analyte NOT DETECTED at or above the reporting limit

RPD Relative Percent Difference

All soil results are reported at a wet weight basis.

Origins Laboratory, Inc.



The results in this report apply to the samples analyzed in accordance with the chain of custody document. This analytical report must be reproduced in its entirety.



March 22, 2023

Eagle Environmental Consulting, LLC

Dan Coloccia

8000 W 44th Ave

Wheat Ridge CO 80033

Project Name - Moonracker 6-27

Project Number - [none]

Attached are your analytical results for Moonracker 6-27 received by Origins Laboratory, Inc. March 10, 2023. This project is associated with Origins project number Y303279-01.

The analytical results in the following report were analyzed under the guidelines of EPA Methods. These methods are identified as follows; "SW" are defined in SW-846, "EPA" are defined in 40CFR part 136 and "SM" are defined in the most current revision of Standard Methods For the Examination of Water and Wastewater.

The analytical results apply specifically to the samples and analyses specified per the attached Chain of Custody. As such, this report shall not be reproduced except in full, without the written approval of Origin's laboratory.

Unless otherwise noted, the analytical results for all soil samples are reported on a wet weight basis. All analytical analyses were performed under NELAP guidelines unless noted by a data qualifier.

Any holding time exceedances, deviations from the method specifications or deviations from Origins Laboratory's Standard Operating Procedures are outlined in the case narrative.

Thank you for selecting Origins for your analytical needs. Please contact us with any questions concerning this report, or if we can help with anything at all.

Origins Laboratory, Inc.
303.433.1322
o-squad@oelabinc.com



1725 Elk Place, Denver, CO 80211 | Phone: 303.433.1322 | Fax: 303.265.9645

Eagle Environmental Consulting, LLC

8000 W 44th Ave

Wheat Ridge CO 80033

Dan Coloccia

Project Number: [none]

Project: Moonracker 6-27

CROSS REFERENCE REPORT

Sample ID	Laboratory ID	Matrix	Date Sampled	Date Received
WH-B01@6'	Y303279-01	Soil	March 9, 2023 14:58	03/10/2023 13:40
FL-B01@4'	Y303279-02	Soil	March 9, 2023 15:07	03/10/2023 13:40

Origins Laboratory, Inc.



The results in this report apply to the samples analyzed in accordance with the chain of custody document. This analytical report must be reproduced in its entirety.

Eagle Environmental Consulting, LLC
8000 W 44th Ave
Wheat Ridge CO 80033

Dan Coloccia
Project Number: [none]
Project: Moonraker 6-27

www.originslaboratory.com

4303279

page 1 of 1

Client: Eagle Environmental (Murtin Drilling)
Project Manager: D. Coloccia
Address: 8000 W 44th Ave
Project Name: Moonraker 6-27
Wheat Ridge, CO 80033
Project Number: 4303279
Telephone Number: 303-433-0479
Email Address: dcoloccia@eagle-enviro.com
Samples Collected By: AM

Fax: 303.265.9645

Sample ID Description	Date Sampled	Time Sampled	# of Containers	Preservative				Matrix			Analysis						Sample Instructions	
				Unpreserved	HCl	HNO ₃	Other	Groundwater	Soil	Air Summ #	Other	BTEX ₂	TPH	EC/PH	SAP	Boron		
WHT-Bp106'	3/9/23	1458	2	X					X				X	X	X	X	Hold	1
FL-Bp104'	1	1507	1											X	X	X		2
WHT-Bp104'	1	1508	1														X	3
																		4
																		5
																		6
																		7
																		8
																		9
																		10

Relinquished By:	Date:	Time:	Received By:	Date:	Time:	Turnaround Time:
<u>Hawman</u>	3/10/23	1240	<u>YF</u>	3/10/23	1340	Same Day <input type="checkbox"/> 24 Hr <input type="checkbox"/> 48 Hr <input type="checkbox"/> 72 Hr <input type="checkbox"/> Standard <input checked="" type="checkbox"/>

Date Results Needed

Temp Received- 0

Origins Laboratory, Inc.

J. Bynon

The results in this report apply to the samples analyzed in accordance with the chain of custody document. This analytical report must be reproduced in its entirety.

Eagle Environmental Consulting, LLC
8000 W 44th Ave
Wheat Ridge CO 80033

Dan Coloccia
Project Number: [none]
Project: Moonracker 6-27

Origins Laboratory

F-012207-01-R1
Effective Date: 01/09/12

Sample Receipt Checklist

Origins Work Order: 4303279

Client: Eagle

Client Project ID: Moonracker 6-27

Checklist Completed by: EHS/DE

Shipped Via: HO

(UPS, FedEx, Hand Delivered, Pick-up, etc.)

Date/time completed: 3/10/23

Airbill #: NA

Matrix(s) Received: (Check all that apply): X Soil/Solid Water Other:

Cooler Number/Temperature: 1 / 6.0 °C / °C / °C (Describe)

Thermometer ID: TOO4

Requirement Description	Yes	No	N/A	Comments (if any)
If samples require cooling, was the temperature between 0°C to ≤ 6°C ⁽¹⁾ ?	<input checked="" type="checkbox"/>	<input type="checkbox"/>	<input type="checkbox"/>	
Is there ice present (document if blue ice is used)	<input checked="" type="checkbox"/>	<input type="checkbox"/>	<input type="checkbox"/>	
Are custody seals present on cooler? (if so, document in comments if they are signed and dated, broken or intact)	<input type="checkbox"/>	<input checked="" type="checkbox"/>	<input type="checkbox"/>	
Are custody seals present on each sample container? (if so, document in comments if they are signed and dated, broken or intact)	<input type="checkbox"/>	<input checked="" type="checkbox"/>	<input type="checkbox"/>	
Were all samples received intact ⁽¹⁾ ?	<input checked="" type="checkbox"/>	<input type="checkbox"/>	<input type="checkbox"/>	
Was adequate sample volume provided ⁽¹⁾ ?	<input checked="" type="checkbox"/>	<input type="checkbox"/>	<input type="checkbox"/>	
Are short holding time analytes or samples with HTs due within 48 hours present ⁽¹⁾ ?	<input type="checkbox"/>	<input checked="" type="checkbox"/>	<input type="checkbox"/>	
Is a chain-of-custody (COC) present and filled out completely ⁽¹⁾ ?	<input checked="" type="checkbox"/>	<input type="checkbox"/>	<input type="checkbox"/>	
Does the COC agree with the number and type of sample bottles received ⁽¹⁾ ?	<input checked="" type="checkbox"/>	<input type="checkbox"/>	<input type="checkbox"/>	
Do the sample IDs on the bottle labels match the COC ⁽¹⁾ ?	<input checked="" type="checkbox"/>	<input type="checkbox"/>	<input type="checkbox"/>	
Is the COC properly relinquished by the client with date and time recorded ⁽¹⁾ ?	<input checked="" type="checkbox"/>	<input type="checkbox"/>	<input type="checkbox"/>	
For volatiles in water – is there headspace (> ¼ inch bubble) present? If yes, contact client and note in narrative.	<input type="checkbox"/>	<input type="checkbox"/>	<input checked="" type="checkbox"/>	
Are samples preserved that require preservation and was it checked ⁽¹⁾ ? (note ID of confirmation instrument used in comments) / (preservation is not confirmed for subcontracted analyses in order to insure sample integrity)/(pH <2 for samples preserved with HNO ₃ , HCL, H ₂ SO ₄) / (pH >10 for samples preserved with NaAsO ₂ +NaOH, ZnAc+NaOH)	<input type="checkbox"/>	<input type="checkbox"/>	<input checked="" type="checkbox"/>	
Additional Comments (if any):				

⁽¹⁾ If NO, then contact the client before proceeding with analysis and note date, time and person contacted as well as the corrective action to in the additional comments (above) and the case narrative.

Reviewed by (Project Manager)

Date/Time Reviewed 3/13/23

Origins Laboratory, Inc.

J. Bynon

The results in this report apply to the samples analyzed in accordance with the chain of custody document. This analytical report must be reproduced in its entirety.

Eagle Environmental Consulting, LLC
8000 W 44th Ave
Wheat Ridge CO 80033

Dan Coloccia
Project Number: [none]
Project: Moonracker 6-27

WH-B01@6'

3/9/2023 2:58:00PM

Analyte	Result	Reporting Limit	Units	Dilution	Batch	Analyst	Prepared	Analyzed	Notes
---------	--------	-----------------	-------	----------	-------	---------	----------	----------	-------

Origins Laboratory, Inc.
Y303279-01 (Soil)

Boron (DTPA Sorbitol)

Boron	0.445	0.100	mg/L	1	B3C1404	CJM	03/14/2023	03/15/2023	
-------	-------	-------	------	---	---------	-----	------------	------------	--

DRO/ORO by EPA 8015D

Diesel (C10-C28)	35.1	25.0	mg/kg	1	B3C1301	ZZZ	03/13/2023	03/15/2023	
Residual Range Organics (C28-C40)	ND	100	"	"	"	ZZZ	"	"	U

Surrogate: o-Terphenyl	84.3 %	50-150			"	"	"	
------------------------	--------	--------	--	--	---	---	---	--

GBTEX+TMBs by 8260D

1,2,4-Trimethylbenzene	ND	0.00200	mg/kg	1	B3C1041	ZZZ	03/11/2023	03/14/2023	U
1,3,5-Trimethylbenzene	ND	0.00200	"	"	"	ZZZ	"	"	U
Benzene	ND	0.00200	"	"	"	ZZZ	"	"	U
Ethylbenzene	ND	0.00200	"	"	"	ZZZ	"	"	U
Naphthalene	ND	0.00380	"	"	"	ZZZ	"	"	U
Toluene	ND	0.00200	"	"	"	ZZZ	"	"	U
Xylenes, total	ND	0.00200	"	"	"	ZZZ	"	"	U
Gasoline Range Hydrocarbons	ND	0.200	"	"	"	ZZZ	"	"	U

Surrogate: 1,2-Dichloroethane-d4	97.8 %	70-130			"	"	"
Surrogate: Toluene-d8	103 %	70-130			"	"	"
Surrogate: 4-Bromofluorobenzene	108 %	70-130			"	"	"

Origins Laboratory, Inc.



The results in this report apply to the samples analyzed in accordance with the chain of custody document. This analytical report must be reproduced in its entirety.

Eagle Environmental Consulting, LLC
8000 W 44th Ave
Wheat Ridge CO 80033

Dan Coloccia
Project Number: [none]
Project: Moonracker 6-27

WH-B01@6'

3/9/2023 2:58:00PM

Analyte	Result	Reporting Limit	Units	Dilution	Batch	Analyst	Prepared	Analyzed	Notes
---------	--------	-----------------	-------	----------	-------	---------	----------	----------	-------

Origins Laboratory, Inc.
Y303279-01 (Soil)

Metals by Saturated Paste by EPA 6010

Calcium	9.51	0.499	meq/L	10	[CALC]	CJM	03/15/2023	03/17/2023
Magnesium	3.83	0.823	"	"	"	CJM	"	"
Sodium	12.0	0.435	"	"	"	CJM	"	"

pH in Soil by 9045D

pH	8.05		pH Units	1	B3C1516	HJD	03/15/2023	03/16/2023
----	------	--	----------	---	---------	-----	------------	------------

SAR by 20B Saturated Paste

SAR	4.64		SAR	1	B3C1506	CJM	03/15/2023	03/17/2023
-----	------	--	-----	---	---------	-----	------------	------------

Specific Conductance Mod. 9050A

Specific Conductance (EC)	2.32	0.00500	mmhos/cm	1	B3C1516	HJD	03/15/2023	03/16/2023
---------------------------	------	---------	----------	---	---------	-----	------------	------------

Origins Laboratory, Inc.



The results in this report apply to the samples analyzed in accordance with the chain of custody document. This analytical report must be reproduced in its entirety.

Eagle Environmental Consulting, LLC
8000 W 44th Ave
Wheat Ridge CO 80033

Dan Coloccia
Project Number: [none]
Project: Moonracker 6-27

FL-B01@4'

3/9/2023 3:07:00PM

Analyte	Result	Reporting Limit	Units	Dilution	Batch	Analyst	Prepared	Analyzed	Notes
---------	--------	-----------------	-------	----------	-------	---------	----------	----------	-------

Origins Laboratory, Inc.
Y303279-02 (Soil)

Boron (DTPA Sorbitol)

Boron	0.192	0.100	mg/L	1	B3C1404	CJM	03/14/2023	03/15/2023	
-------	-------	-------	------	---	---------	-----	------------	------------	--

DRO/ORO by EPA 8015D

Diesel (C10-C28)	ND	25.0	mg/kg	1	B3C1301	ZZZ	03/13/2023	03/15/2023	U
Residual Range Organics (C28-C40)	ND	100	"	"	"	ZZZ	"	"	U

Surrogate: o-Terphenyl	88.0 %	50-150			"	"	"	
------------------------	--------	--------	--	--	---	---	---	--

GBTEX+TMBs by 8260D

1,2,4-Trimethylbenzene	ND	0.00200	mg/kg	1	B3C1041	ZZZ	03/11/2023	03/14/2023	U
1,3,5-Trimethylbenzene	ND	0.00200	"	"	"	ZZZ	"	"	U
Benzene	ND	0.00200	"	"	"	ZZZ	"	"	U
Ethylbenzene	ND	0.00200	"	"	"	ZZZ	"	"	U
Naphthalene	ND	0.00380	"	"	"	ZZZ	"	"	U
Toluene	ND	0.00200	"	"	"	ZZZ	"	"	U
Xylenes, total	ND	0.00200	"	"	"	ZZZ	"	"	U
Gasoline Range Hydrocarbons	ND	0.200	"	"	"	ZZZ	"	"	U

Surrogate: 1,2-Dichloroethane-d4	97.5 %	70-130			"	"	"
Surrogate: Toluene-d8	101 %	70-130			"	"	"
Surrogate: 4-Bromofluorobenzene	107 %	70-130			"	"	"

Origins Laboratory, Inc.



The results in this report apply to the samples analyzed in accordance with the chain of custody document. This analytical report must be reproduced in its entirety.

Eagle Environmental Consulting, LLC
8000 W 44th Ave
Wheat Ridge CO 80033

Dan Coloccia
Project Number: [none]
Project: Moonracker 6-27

FL-B01@4'

3/9/2023 3:07:00PM

Analyte	Result	Reporting Limit	Units	Dilution	Batch	Analyst	Prepared	Analyzed	Notes
---------	--------	-----------------	-------	----------	-------	---------	----------	----------	-------

Origins Laboratory, Inc.
Y303279-02 (Soil)

Metals by Saturated Paste by EPA 6010

Calcium	5.17	0.499	meq/L	10	[CALC]	CJM	03/15/2023	03/17/2023
Magnesium	1.98	0.823	"	"	"	CJM	"	"
Sodium	4.79	0.435	"	"	"	CJM	"	"

pH in Soil by 9045D

pH	8.06		pH Units	1	B3C1516	HJD	03/15/2023	03/16/2023
----	------	--	----------	---	---------	-----	------------	------------

SAR by 20B Saturated Paste

SAR	2.53		SAR	1	B3C1506	CJM	03/15/2023	03/17/2023
-----	------	--	-----	---	---------	-----	------------	------------

Specific Conductance Mod. 9050A

Specific Conductance (EC)	1.22	0.00500	mmhos/cm	1	B3C1516	HJD	03/15/2023	03/16/2023
---------------------------	------	---------	----------	---	---------	-----	------------	------------

Origins Laboratory, Inc.



The results in this report apply to the samples analyzed in accordance with the chain of custody document. This analytical report must be reproduced in its entirety.

Eagle Environmental Consulting, LLC
8000 W 44th Ave
Wheat Ridge CO 80033

Dan Coloccia
Project Number: [none]
Project: Moonracker 6-27

Volatile Organic Compounds by GC/MS SW846 8260D - Quality Control
Origins Laboratory, Inc.

Analyte	Result	Reporting Limit	Units	Spike Level	Source Result	%REC	%REC Limits	RPD	RPD Limit	Notes
Batch B3C1041 - EPA 5030 (soil)										
Blank (B3C1041-BLK1)					Prepared: 03/11/2023 Analyzed: 03/14/2023					
1,2,4-Trimethylbenzene	ND	0.00200	mg/kg							U
1,3,5-Trimethylbenzene	ND	0.00200	"							U
Benzene	ND	0.00200	"							U
Ethylbenzene	ND	0.00200	"							U
Naphthalene	ND	0.00380	"							U
Toluene	ND	0.00200	"							U
Xylenes, total	ND	0.00200	"							U
Gasoline Range Hydrocarbons	ND	0.200	"							U
Surrogate: 1,2-Dichloroethane-d4	0.12		"	0.125		95.5	70-130			
Surrogate: Toluene-d8	0.13		"	0.125		104	70-130			
Surrogate: 4-Bromofluorobenzene	0.14		"	0.125		109	70-130			

Origins Laboratory, Inc.



The results in this report apply to the samples analyzed in accordance with the chain of custody document. This analytical report must be reproduced in its entirety.

Eagle Environmental Consulting, LLC
8000 W 44th Ave
Wheat Ridge CO 80033

Dan Coloccia
Project Number: [none]
Project: Moonracker 6-27

Volatile Organic Compounds by GC/MS SW846 8260D - Quality Control
Origins Laboratory, Inc.

Analyte	Result	Reporting Limit	Units	Spike Level	Source Result	%REC	%REC Limits	RPD	RPD Limit	Notes
Batch B3C1041 - EPA 5030 (soil)										
LCS (B3C1041-BS1)					Prepared: 03/11/2023 Analyzed: 03/14/2023					
1,2,4-Trimethylbenzene	0.0981	0.00200	mg/kg	0.100		98.1	70-130			
1,3,5-Trimethylbenzene	0.103	0.00200	"	0.100		103	70-130			
Benzene	0.102	0.00200	"	0.100		102	70-130			
Ethylbenzene	0.0999	0.00200	"	0.100		99.9	70-130			
Naphthalene	0.0915	0.00380	"	0.100		91.5	70-130			
Toluene	0.0942	0.00200	"	0.100		94.2	70-130			
o-Xylene	0.0863	0.00200	"	0.100		86.3	70-130			
m,p-Xylene	0.200	0.00400	"	0.200		100	70-130			
Surrogate: 1,2-Dichloroethane-d4	0.12		"	0.125		98.4	70-130			
Surrogate: Toluene-d8	0.13		"	0.125		101	70-130			
Surrogate: 4-Bromofluorobenzene	0.12		"	0.125		96.0	70-130			

Origins Laboratory, Inc.



The results in this report apply to the samples analyzed in accordance with the chain of custody document. This analytical report must be reproduced in its entirety.

Eagle Environmental Consulting, LLC
8000 W 44th Ave
Wheat Ridge CO 80033

Dan Coloccia
Project Number: [none]
Project: Moonracker 6-27

Volatile Organic Compounds by GC/MS SW846 8260D - Quality Control
Origins Laboratory, Inc.

Analyte	Result	Reporting Limit	Units	Spike Level	Source Result	%REC	%REC Limits	RPD	RPD Limit	Notes
---------	--------	-----------------	-------	-------------	---------------	------	-------------	-----	-----------	-------

Batch B3C1041 - EPA 5030 (soil)

Matrix Spike (B3C1041-MS1)		Source: Y303257-01			Prepared: 03/11/2023 Analyzed: 03/14/2023					
1,2,4-Trimethylbenzene	0.0835	0.00200	mg/kg	0.100	ND	83.5	70-130			
1,3,5-Trimethylbenzene	0.0874	0.00200	"	0.100	ND	87.4	70-130			
Benzene	0.0856	0.00200	"	0.100	ND	85.6	70-130			
Ethylbenzene	0.0941	0.00200	"	0.100	ND	94.1	70-130			
Naphthalene	0.0717	0.00380	"	0.100	ND	71.7	70-130			
Toluene	0.0782	0.00200	"	0.100	ND	78.2	70-130			
o-Xylene	0.0812	0.00200	"	0.100	ND	81.2	70-130			
m,p-Xylene	0.186	0.00400	"	0.200	ND	93.1	70-130			
Surrogate: 1,2-Dichloroethane-d4	0.12		"	0.125		97.2	70-130			
Surrogate: Toluene-d8	0.13		"	0.125		102	70-130			
Surrogate: 4-Bromofluorobenzene	0.13		"	0.125		103	70-130			

Origins Laboratory, Inc.



The results in this report apply to the samples analyzed in accordance with the chain of custody document. This analytical report must be reproduced in its entirety.

Eagle Environmental Consulting, LLC
8000 W 44th Ave
Wheat Ridge CO 80033

Dan Coloccia
Project Number: [none]
Project: Moonracker 6-27

Volatile Organic Compounds by GC/MS SW846 8260D - Quality Control
Origins Laboratory, Inc.

Analyte	Result	Reporting Limit	Units	Spike Level	Source Result	%REC	%REC Limits	RPD	RPD Limit	Notes
Batch B3C1041 - EPA 5030 (soil)										
Matrix Spike Dup (B3C1041-MSD1)		Source: Y303257-01			Prepared: 03/11/2023 Analyzed: 03/14/2023					
1,2,4-Trimethylbenzene	0.0802	0.00200	mg/kg	0.100	ND	80.2	70-130	4.10	20	
1,3,5-Trimethylbenzene	0.0834	0.00200	"	0.100	ND	83.4	70-130	4.68	20	
Benzene	0.0909	0.00200	"	0.100	ND	90.9	70-130	6.01	20	
Ethylbenzene	0.0950	0.00200	"	0.100	ND	95.0	70-130	0.910	20	
Naphthalene	0.0726	0.00380	"	0.100	ND	72.6	70-130	1.19	20	
Toluene	0.0803	0.00200	"	0.100	ND	80.3	70-130	2.63	20	
o-Xylene	0.0796	0.00200	"	0.100	ND	79.6	70-130	1.89	20	
m,p-Xylene	0.190	0.00400	"	0.200	ND	94.8	70-130	1.84	20	
Surrogate: 1,2-Dichloroethane-d4	0.13		"	0.125		107	70-130			
Surrogate: Toluene-d8	0.13		"	0.125		102	70-130			
Surrogate: 4-Bromofluorobenzene	0.13		"	0.125		104	70-130			

Origins Laboratory, Inc.



The results in this report apply to the samples analyzed in accordance with the chain of custody document. This analytical report must be reproduced in its entirety.

Eagle Environmental Consulting, LLC
8000 W 44th Ave
Wheat Ridge CO 80033

Dan Coloccia
Project Number: [none]
Project: Moonracker 6-27

Volatile Organic Compounds by GC/MS SW846 8260D - Quality Control
Origins Laboratory, Inc.

Analyte	Result	Reporting Limit	Units	Spike Level	Source Result	%REC	%REC Limits	RPD	RPD Limit	Notes
Batch B3C1301 - EPA 3580										
Blank (B3C1301-BLK1)					Prepared: 03/13/2023 Analyzed: 03/15/2023					
Diesel (C10-C28)	ND	25.0	mg/kg							U
Residual Range Organics (C28-C40)	ND	100	"							U
Surrogate: o-Terphenyl	21		"	24.9		84.6	50-150			

Origins Laboratory, Inc.



The results in this report apply to the samples analyzed in accordance with the chain of custody document. This analytical report must be reproduced in its entirety.

Eagle Environmental Consulting, LLC
8000 W 44th Ave
Wheat Ridge CO 80033

Dan Coloccia
Project Number: [none]
Project: Moonracker 6-27

Extractable Petroleum Hydrocarbons by 8015D - Quality Control Origins Laboratory, Inc.

Analyte	Result	Reporting Limit	Units	Spike Level	Source Result	%REC	%REC Limits	RPD	RPD Limit	Notes
---------	--------	-----------------	-------	-------------	---------------	------	-------------	-----	-----------	-------

Batch B3C1301 - EPA 3580

LCS (B3C1301-BS1)

Prepared: 03/13/2023 Analyzed: 03/15/2023

Diesel (C10-C28)	906	50.0	mg/kg	1000		90.6	70-130			
Residual Range Organics (C28-C40)	931	200	"	1000		93.1	70-130			
Surrogate: o-Terphenyl	46		"	49.8		92.3	50-150			

Origins Laboratory, Inc.



The results in this report apply to the samples analyzed in accordance with the chain of custody document. This analytical report must be reproduced in its entirety.

Eagle Environmental Consulting, LLC
8000 W 44th Ave
Wheat Ridge CO 80033

Dan Coloccia
Project Number: [none]
Project: Moonracker 6-27

Extractable Petroleum Hydrocarbons by 8015D - Quality Control
Origins Laboratory, Inc.

Analyte	Result	Reporting Limit	Units	Spike Level	Source Result	%REC	%REC Limits	RPD	RPD Limit	Notes
---------	--------	-----------------	-------	-------------	---------------	------	-------------	-----	-----------	-------

Batch B3C1301 - EPA 3580

Matrix Spike (B3C1301-MS1)		Source: Y303278-01			Prepared: 03/13/2023 Analyzed: 03/15/2023					
Diesel (C10-C28)	860	50.0	mg/kg	1000	ND	86.0	70-130			
Residual Range Organics (C28-C40)	876	200	"	1000	ND	87.6	70-130			
Surrogate: o-Terphenyl	40		"	49.8		81.0	50-150			

Origins Laboratory, Inc.



The results in this report apply to the samples analyzed in accordance with the chain of custody document. This analytical report must be reproduced in its entirety.

Eagle Environmental Consulting, LLC
8000 W 44th Ave
Wheat Ridge CO 80033

Dan Coloccia
Project Number: [none]
Project: Moonracker 6-27

Extractable Petroleum Hydrocarbons by 8015D - Quality Control
Origins Laboratory, Inc.

Analyte	Result	Reporting Limit	Units	Spike Level	Source Result	%REC	%REC Limits	RPD	RPD Limit	Notes
---------	--------	-----------------	-------	-------------	---------------	------	-------------	-----	-----------	-------

Batch B3C1301 - EPA 3580

Matrix Spike Dup (B3C1301-MSD1)		Source: Y303278-01			Prepared: 03/13/2023 Analyzed: 03/15/2023					
Diesel (C10-C28)	843	50.0	mg/kg	1000	ND	84.3	70-130	2.04	35	
Residual Range Organics (C28-C40)	856	200	"	1000	ND	85.6	70-130	2.25	35	
Surrogate: o-Terphenyl	40		"	49.8		81.3	50-150			

Origins Laboratory, Inc.



The results in this report apply to the samples analyzed in accordance with the chain of custody document. This analytical report must be reproduced in its entirety.

Eagle Environmental Consulting, LLC
8000 W 44th Ave
Wheat Ridge CO 80033

Dan Coloccia
Project Number: [none]
Project: Moonracker 6-27

Extractable Petroleum Hydrocarbons by 8015D - Quality Control

Origins Laboratory, Inc.

Analyte	Result	Reporting Limit	Units	Spike Level	Source Result	%REC	%REC Limits	RPD	RPD Limit	Notes
---------	--------	-----------------	-------	-------------	---------------	------	-------------	-----	-----------	-------

Classical Chemistry Parameters - Quality Control

Origins Laboratory, Inc.

Analyte	Result	Reporting Limit	Units	Spike Level	Source Result	%REC	%REC Limits	RPD	RPD Limit	Notes
---------	--------	-----------------	-------	-------------	---------------	------	-------------	-----	-----------	-------

Batch B3C1404 - DTPA Sorbitol Preparation

Blank (B3C1404-BLK1)

Prepared: 03/14/2023 Analyzed: 03/15/2023

Boron ND 0.100 mg/L

Duplicate (B3C1404-DUP1)

Source: Y303259-05

Prepared: 03/14/2023 Analyzed: 03/15/2023

Boron 5.84 0.0981 mg/L 7.07 19.1 50

Batch B3C1506 - Saturated Paste Metals

Blank (B3C1506-BLK1)

Prepared: 03/15/2023 Analyzed: 03/17/2023

SAR 0.00 SAR

Calcium PPM ND 10.0 mg/L

Magnesium PPM ND 10.0 "

Sodium PPM ND 10.0 "

Duplicate (B3C1506-DUP1)

Source: Y303267-04

Prepared: 03/15/2023 Analyzed: 03/17/2023

SAR 0.00 SAR 0.957 200 200

Calcium PPM 50.7 10.0 mg/L 57.0 11.8 50

Magnesium PPM 13.8 10.0 " 15.2 9.62 50

Sodium PPM 29.0 10.0 " 31.5 8.31 50

Origins Laboratory, Inc.



The results in this report apply to the samples analyzed in accordance with the chain of custody document. This analytical report must be reproduced in its entirety.

Eagle Environmental Consulting, LLC
8000 W 44th Ave
Wheat Ridge CO 80033

Dan Coloccia
Project Number: [none]
Project: Moonracker 6-27

Saturated Paste - Quality Control
Origins Laboratory, Inc.

Analyte	Result	Reporting Limit	Units	Spike Level	Source Result	%REC	%REC Limits	RPD	RPD Limit	Notes
Batch B3C1516 - Saturated Paste pH/EC										
Blank (B3C1516-BLK1)					Prepared: 03/15/2023 Analyzed: 03/16/2023					
Specific Conductance (EC)	ND	0.00500	mmhos/cm							
Duplicate (B3C1516-DUP1)					Source: Y303267-04 Prepared: 03/15/2023 Analyzed: 03/16/2023					
Specific Conductance (EC)	0.708	0.00500	mmhos/cm		0.717			1.25	25	
pH	7.98		pH Units		8.00			0.250	25	

Origins Laboratory, Inc.



The results in this report apply to the samples analyzed in accordance with the chain of custody document. This analytical report must be reproduced in its entirety.

Eagle Environmental Consulting, LLC

8000 W 44th Ave

Wheat Ridge CO 80033

Dan Coloccia

Project Number: [none]

Project: Moonracker 6-27

Notes and Definitions

U Sample is Non-Detect.

ND Analyte NOT DETECTED at or above the reporting limit

RPD Relative Percent Difference

All soil results are reported at a wet weight basis.

Origins Laboratory, Inc.



The results in this report apply to the samples analyzed in accordance with the chain of custody document. This analytical report must be reproduced in its entirety.



May 06, 2024

Eagle Environmental Consulting, LLC

Dan Coloccia

8000 W 44th Ave

Wheat Ridge CO 80033

Project Name - Murfin - Moonraker 6-27

Project Number - [none]

Attached are your analytical results for Murfin - Moonraker 6-27 received by Origins Laboratory, Inc. April 23, 2024. This project is associated with Origins project number Y404641-01.

The analytical results in the following report were analyzed under the guidelines of EPA Methods. These methods are identified as follows; "SW" are defined in SW-846, "EPA" are defined in 40CFR part 136 and "SM" are defined in the most current revision of Standard Methods For the Examination of Water and Wastewater.

The analytical results apply specifically to the samples and analyses specified per the attached Chain of Custody. As such, this report shall not be reproduced except in full, without the written approval of Origin's laboratory.

Unless otherwise noted, the analytical results for all soil samples are reported on a wet weight basis. All analytical analyses were performed under NELAP guidelines unless noted by a data qualifier.

Any holding time exceedances, deviations from the method specifications or deviations from Origins Laboratory's Standard Operating Procedures are outlined in the case narrative.

Thank you for selecting Origins for your analytical needs. Please contact us with any questions concerning this report, or if we can help with anything at all.

Origins Laboratory, Inc.
303.433.1322
o-squad@oelabinc.com



1725 Elk Place, Denver, CO 80211 | Phone: 303.433.1322 | Fax: 303.265.9645

Eagle Environmental Consulting, LLC
8000 W 44th Ave
Wheat Ridge CO 80033

Dan Coloccia
Project Number: [none]
Project: Murfin - Moonraker 6-27

CROSS REFERENCE REPORT

Sample ID	Laboratory ID	Matrix	Date Sampled	Date Received
AST-B01-1@3"	Y404641-01	Soil	April 23, 2024 8:15	04/23/2024 13:49
AST-B02-1@3"	Y404641-02	Soil	April 23, 2024 8:18	04/23/2024 13:49
PW-B01-1@3'	Y404641-03	Soil	April 23, 2024 8:20	04/23/2024 13:49
SEP-B01-1@3"	Y404641-04	Soil	April 23, 2024 8:22	04/23/2024 13:49
COM-B01-1@3"	Y404641-05	Soil	April 23, 2024 8:25	04/23/2024 13:49
COM-B02-1@3"	Y404641-06	Soil	April 23, 2024 8:28	04/23/2024 13:49
WH-B01-1@6'	Y404641-07	Soil	April 23, 2024 9:00	04/23/2024 13:49
FL-B01-1@4'	Y404641-08	Soil	April 23, 2024 9:10	04/23/2024 13:49
FL-B02-1@4'	Y404641-09	Soil	April 23, 2024 9:30	04/23/2024 13:49
FL-B03-1@4'	Y404641-10	Soil	April 23, 2024 9:40	04/23/2024 13:49
FL-B04-1@4'	Y404641-11	Soil	April 23, 2024 9:50	04/23/2024 13:49
WH-BG02@4'	Y404641-12	Soil	April 23, 2024 10:00	04/23/2024 13:49
WH-BG03@4'	Y404641-13	Soil	April 23, 2024 10:10	04/23/2024 13:49
FL-BG01@4'	Y404641-14	Soil	April 23, 2024 10:20	04/23/2024 13:49

Origins Laboratory, Inc.



The results in this report apply to the samples analyzed in accordance with the chain of custody document. This analytical report must be reproduced in its entirety.

Eagle Environmental Consulting, LLC
8000 W 44th Ave
Wheat Ridge CO 80033

Dan Coloccia
Project Number: [none]
Project: Murfin - Moonraker 6-27

CROSS REFERENCE REPORT

Sample ID	Laboratory ID	Matrix	Date Sampled	Date Received
FL-BG02@3'	Y404641-15	Soil	April 23, 2024 10:30	04/23/2024 13:49
PW-BG02@3"	Y404641-16	Soil	April 23, 2024 10:40	04/23/2024 13:49
PW-BG03@3"	Y404641-17	Soil	April 23, 2024 10:45	04/23/2024 13:49

Origins Laboratory, Inc.



The results in this report apply to the samples analyzed in accordance with the chain of custody document. This analytical report must be reproduced in its entirety.

Jordan A. Bynon, Project Manager

Eagle Environmental Consulting, LLC
8000 W 44th Ave
Wheat Ridge CO 80033

Dan Coloccia
Project Number: [none]
Project: Murfin - Moonraker 6-27

ORIGINS

LABORATORY, INC

www.originslaboratory.com

Y404641

page 1 of 2

Client: Eagle Environmental (Murfin Drilling) Project Manager: D. Coloccia

Address: 8000 W 44th Ave

Project Name: Moonraker 6-27

Wheat Ridge, CO 80033

Project Number: -

Telephone Number: 303-433-0479

Samples Collected By: CB

Email Address: dcoloccia@eagle-enviro.com

Fax: 303.265.9645

Sample ID Description	Date Sampled	Time Sampled	# of Containers	Preservative				Matrix			Analysis		Sample Instructions	
				Unpreserved	HCl	HNO ₃	Other	Groundwater	Soil	Air Summa #	Other	PAHs		Metals
AST-B01-1C3"	4/23/24	0815	3	X						X			X	1
AST-B02-1C3"		0818												2
PW-B01-1C3"		0820												3
SEP-B01-1C3"		0822												4
COM-B01-1C3"		0825												5
COM-B02-1C3"		0828												6
WH-B01-1C6'		0900												7
FL-B01-1C4'		0910												8
FL-B02-1C4'		0930												9
FL-B03-1C4'		0940												10
Relinquished By: Chris Bodi	Date: 4/23/24	Time: 349		Received By: EAD	Date: 4/23/24	Time: 1349		Turnaround Time: Same Day <input type="checkbox"/> 24 Hr <input type="checkbox"/> 48 Hr <input type="checkbox"/> 72 Hr <input checked="" type="checkbox"/> Standard						

Temp Received- 4.6 Date Results Needed

Origins Laboratory, Inc.

J. Bynon

The results in this report apply to the samples analyzed in accordance with the chain of custody document. This analytical report must be reproduced in its entirety.

Eagle Environmental Consulting, LLC
8000 W 44th Ave
Wheat Ridge CO 80033

Dan Coloccia
Project Number: [none]
Project: Murfin - Moonraker 6-27

4404641

Client: Eagle Environmental (Murfin Drilling) Project Manager: D. Coloccia
Address: 8000 W 44th Ave
Project Name: Moonraker 6-27
Wheat Ridge, CO 80033
Project Number: -
Telephone Number: 303-433-0479
Samples Collected By: CB
Email Address: dcoloccia@eagle-environ.com

1725 Elk Place | Denver, CO 80211 | Phone: 303.433.1322 | Fax: 303.265.9645

Sample ID Description	Date Sampled	Time Sampled	# of Containers	Preservative	Matrix	Analysis	Sample Instructions
FL-BG04-104'	4/23/24	0950	3	X	Soil	PAHs Metals	1
WH-BG0204'		1000	2				2
WH-BG0304'		1010					3
FL-BG0104'		1020					4
FL-BG0203'		1030					5
PW-BG0203"		1040					6
PW-BG0303"		1045					7
							8
							9
							10
Relinquished By: Chris Bodi	Date: 4/23/24	Time: 1349		Received By: EAD	Date: 4/23/24	Time: 1349	Turnaround Time: Same Day <input type="checkbox"/> 24 Hr <input type="checkbox"/> 48 Hr <input type="checkbox"/> 72 Hr <input checked="" type="checkbox"/> Standard
Relinquished By:	Date:	Time:		Received By:	Date:	Time:	

Temp Received: 41.6 Date Results Needed

Origins Laboratory, Inc.

J. Bynon

The results in this report apply to the samples analyzed in accordance with the chain of custody document. This analytical report must be reproduced in its entirety.

Eagle Environmental Consulting, LLC
8000 W 44th Ave
Wheat Ridge CO 80033

Dan Coloccia
Project Number: [none]
Project: Murfin - Moonraker 6-27

Origins Laboratory

F-012207-01-R1

Effective Date: 01/09/12

Sample Receipt Checklist

Origins Work Order: 1404641

Client: Eagle

Client Project ID: Moonraker 6-27

Checklist Completed by: EH/DA

Shipped Via: TD
(UPS, FedEx, Hand Delivered, Pick-up, etc.)

Date/time completed: 4/23/24

Airbill #: N/A

Matrix(s) Received: (Check all that apply): ✓ Soil/Solid Water Other: (Describe)

Cooler Number/Temperature: 114.6 °C / °C / °C

Thermometer ID: 7005

Requirement Description	Yes	No	N/A	Comments (if any)
If samples require cooling, was the temperature between 0°C to ≤ 6°C ⁽¹⁾ ?	<u>✓</u>			
Is there ice present (document if blue ice is used)	<u>✓</u>			
Are custody seals present on cooler? (if so, document in comments if they are signed and dated, broken or intact)		<u>✓</u>		
Are custody seals present on each sample container? (if so, document in comments if they are signed and dated, broken or intact)		<u>✓</u>		
Were all samples received intact ⁽¹⁾ ?	<u>✓</u>			
Was adequate sample volume provided ⁽¹⁾ ?	<u>✓</u>			
Are short holding time analytes or samples with HTs due within 48 hours present ⁽¹⁾ ?		<u>✓</u>		
Is a chain-of-custody (COC) present and filled out completely ⁽¹⁾ ?	<u>✓</u>			
Does the COC agree with the number and type of sample bottles received ⁽¹⁾ ?	<u>✓</u>			
Do the sample IDs on the bottle labels match the COC ⁽¹⁾ ?	<u>✓</u>			
Is the COC properly relinquished by the client with date and time recorded ⁽¹⁾ ?	<u>✓</u>			
For volatiles in water – is there headspace (> ¼ inch bubble) present? If yes, contact client and note in narrative.			<u>✓</u>	
Are samples preserved that require preservation and was it checked ⁽¹⁾ ? (note ID of confirmation instrument used in comments) / (preservation is not confirmed for subcontracted analyses in order to insure sample integrity)/(pH <2 for samples preserved with HNO ₃ , HCL, H ₂ SO ₄) / (pH >10 for samples preserved with NaAsO ₂ +NaOH, ZnAc+NaOH)			<u>✓</u>	
Additional Comments (if any):				

⁽¹⁾ If NO, then contact the client before proceeding with analysis and note date/time and person contacted as well as the corrective action to in the additional comments (above) and the case narrative.

Reviewed by (Project Manager)

4/24/24
Date/Time Reviewed

Origins Laboratory, Inc.

Bynon

The results in this report apply to the samples analyzed in accordance with the chain of custody document. This analytical report must be reproduced in its entirety.

Eagle Environmental Consulting, LLC
8000 W 44th Ave
Wheat Ridge CO 80033

Dan Coloccia
Project Number: [none]
Project: Murfin - Moonraker 6-27

AST-B01-1@3"
4/23/2024 8:15:00AM

Analyte	Result	Min Detection Limit	Reporting Limit	Units	Dilution	Batch	Prepared	Analyzed	Notes
---------	--------	------------------------	--------------------	-------	----------	-------	----------	----------	-------

Origins Laboratory, Inc.
Y404641-01 (Soil)

PAH by EPA 8270E

1-Methylnaphthalene	ND	0.002	mg/kg	1	B4D2544	04/25/2024	05/03/2024	Ua
2-Methylnaphthalene	ND	0.002	"	"	"	"	"	Ua
Acenaphthene	ND	0.020	"	"	"	"	"	Ua
Anthracene	ND	0.020	"	"	"	"	"	Ua
Benzo (a) anthracene	ND	0.005	"	"	"	"	"	Ua
Benzo (a) pyrene	ND	0.020	"	"	"	"	"	Ua
Benzo (b) fluoranthene	ND	0.020	"	"	"	"	"	Ua
Benzo (k) fluoranthene	ND	0.020	"	"	"	"	"	Ua
Chrysene	ND	0.020	"	"	"	"	"	Ua
Dibenz (a,h) anthracene	ND	0.020	"	"	"	"	"	Ua
Fluoranthene	ND	0.020	"	"	"	"	"	Ua
Fluorene	ND	0.020	"	"	"	"	"	Ua
Indeno (1,2,3-cd) pyrene	ND	0.020	"	"	"	"	"	Ua
Naphthalene	ND	0.002	"	"	"	"	"	Ua
Pyrene	ND	0.020	"	"	"	"	"	Ua

Surrogate: Fluorene-d10	101 %	60-130	"	"	"
Surrogate: Anthracene-d10	95.5 %	60-130	"	"	"
Surrogate: Pyrene-d10	97.7 %	60-130	"	"	"
Surrogate: Benzo (a) pyrene-d12	103 %	60-130	"	"	"

Origins Laboratory, Inc.



The results in this report apply to the samples analyzed in accordance with the chain of custody document. This analytical report must be reproduced in its entirety.

Eagle Environmental Consulting, LLC
8000 W 44th Ave
Wheat Ridge CO 80033

Dan Coloccia
Project Number: [none]
Project: Murfin - Moonraker 6-27

AST-B01-1@3"
4/23/2024 8:15:00AM

Analyte	Result	Min Detection Limit	Reporting Limit	Units	Dilution	Batch	Prepared	Analyzed	Notes
---------	--------	---------------------	-----------------	-------	----------	-------	----------	----------	-------

Origins Laboratory, Inc.
Y404641-01 (Soil)

Table 915 metals by EPA 6020B

Arsenic	3.04	0.272	mg/kg	10	B4D2343	04/23/2024	04/24/2024
Barium	127	9.39	"	"	"	"	"
Cadmium	0.322	0.0939	"	"	"	"	"
Copper	12.3	9.39	"	"	"	"	"
Lead	14.3	0.939	"	"	"	"	"
Nickel	10.0	0.939	"	"	"	"	"
Selenium	0.262	0.244	"	"	"	"	"
Silver	ND	0.0939	"	"	"	"	"
Zinc	60.1	34.7	"	"	"	"	"

Total Metals by 7196A

Hexavalent Chromium	ND	0.161	0.402	mg/kg dry	1	2603196	04/30/2024	05/01/2024	U
---------------------	----	-------	-------	-----------	---	---------	------------	------------	---

Origins Laboratory, Inc.



The results in this report apply to the samples analyzed in accordance with the chain of custody document. This analytical report must be reproduced in its entirety.

Eagle Environmental Consulting, LLC
8000 W 44th Ave
Wheat Ridge CO 80033

Dan Coloccia
Project Number: [none]
Project: Murfin - Moonraker 6-27

AST-B02-1@3"

4/23/2024 8:18:00AM

Analyte	Result	Min Detection Limit	Reporting Limit	Units	Dilution	Batch	Prepared	Analyzed	Notes
---------	--------	---------------------	-----------------	-------	----------	-------	----------	----------	-------

Origins Laboratory, Inc.
Y404641-02 (Soil)

PAH by EPA 8270E

1-Methylnaphthalene	ND	0.002	mg/kg	1	B4D2544	04/25/2024	05/03/2024	Ua
2-Methylnaphthalene	ND	0.002	"	"	"	"	"	Ua
Acenaphthene	ND	0.020	"	"	"	"	"	Ua
Anthracene	ND	0.020	"	"	"	"	"	Ua
Benzo (a) anthracene	ND	0.005	"	"	"	"	"	Ua
Benzo (a) pyrene	ND	0.020	"	"	"	"	"	Ua
Benzo (b) fluoranthene	ND	0.020	"	"	"	"	"	Ua
Benzo (k) fluoranthene	ND	0.020	"	"	"	"	"	Ua
Chrysene	ND	0.020	"	"	"	"	"	Ua
Dibenz (a,h) anthracene	ND	0.020	"	"	"	"	"	Ua
Fluoranthene	ND	0.020	"	"	"	"	"	Ua
Fluorene	ND	0.020	"	"	"	"	"	Ua
Indeno (1,2,3-cd) pyrene	ND	0.020	"	"	"	"	"	Ua
Naphthalene	ND	0.002	"	"	"	"	"	Ua
Pyrene	ND	0.020	"	"	"	"	"	Ua

Surrogate: Fluorene-d10	101 %	60-130	"	"	"
Surrogate: Anthracene-d10	95.8 %	60-130	"	"	"
Surrogate: Pyrene-d10	98.6 %	60-130	"	"	"
Surrogate: Benzo (a) pyrene-d12	106 %	60-130	"	"	"

Origins Laboratory, Inc.



The results in this report apply to the samples analyzed in accordance with the chain of custody document. This analytical report must be reproduced in its entirety.

Eagle Environmental Consulting, LLC
8000 W 44th Ave
Wheat Ridge CO 80033

Dan Coloccia
Project Number: [none]
Project: Murfin - Moonraker 6-27

AST-B02-1@3"

4/23/2024 8:18:00AM

Analyte	Result	Min Detection Limit	Reporting Limit	Units	Dilution	Batch	Prepared	Analyzed	Notes
---------	--------	---------------------	-----------------	-------	----------	-------	----------	----------	-------

Origins Laboratory, Inc.
Y404641-02 (Soil)

Table 915 metals by EPA 6020B

Arsenic	2.84	0.287	mg/kg	10	B4D2343	04/23/2024	04/24/2024
Barium	102	9.89	"	"	"	"	"
Cadmium	0.320	0.0989	"	"	"	"	"
Copper	10.8	9.89	"	"	"	"	"
Lead	13.3	0.989	"	"	"	"	"
Nickel	8.75	0.989	"	"	"	"	"
Selenium	ND	0.257	"	"	"	"	"
Silver	ND	0.0989	"	"	"	"	"
Zinc	49.8	36.6	"	"	"	"	"

Total Metals by 7196A

Hexavalent Chromium	ND	0.149	0.373	mg/kg dry	1	2603196	04/30/2024	05/01/2024	U
---------------------	----	-------	-------	-----------	---	---------	------------	------------	---

Origins Laboratory, Inc.



The results in this report apply to the samples analyzed in accordance with the chain of custody document. This analytical report must be reproduced in its entirety.

Eagle Environmental Consulting, LLC
8000 W 44th Ave
Wheat Ridge CO 80033

Dan Coloccia
Project Number: [none]
Project: Murfin - Moonraker 6-27

PW-B01-1@3'

4/23/2024 8:20:00AM

Analyte	Result	Min Detection Limit	Reporting Limit	Units	Dilution	Batch	Prepared	Analyzed	Notes
---------	--------	---------------------	-----------------	-------	----------	-------	----------	----------	-------

Origins Laboratory, Inc.
Y404641-03 (Soil)

PAH by EPA 8270E

1-Methylnaphthalene	ND	0.002	mg/kg	1	B4D2544	04/25/2024	05/03/2024	Ua
2-Methylnaphthalene	ND	0.002	"	"	"	"	"	Ua
Acenaphthene	ND	0.020	"	"	"	"	"	Ua
Anthracene	ND	0.020	"	"	"	"	"	Ua
Benzo (a) anthracene	ND	0.005	"	"	"	"	"	Ua
Benzo (a) pyrene	ND	0.020	"	"	"	"	"	Ua
Benzo (b) fluoranthene	ND	0.020	"	"	"	"	"	Ua
Benzo (k) fluoranthene	ND	0.020	"	"	"	"	"	Ua
Chrysene	ND	0.020	"	"	"	"	"	Ua
Dibenz (a,h) anthracene	ND	0.020	"	"	"	"	"	Ua
Fluoranthene	ND	0.020	"	"	"	"	"	Ua
Fluorene	ND	0.020	"	"	"	"	"	Ua
Indeno (1,2,3-cd) pyrene	ND	0.020	"	"	"	"	"	Ua
Naphthalene	ND	0.002	"	"	"	"	"	Ua
Pyrene	ND	0.020	"	"	"	"	"	Ua

Surrogate: Fluorene-d10	101 %	60-130	"	"	"
Surrogate: Anthracene-d10	94.8 %	60-130	"	"	"
Surrogate: Pyrene-d10	96.6 %	60-130	"	"	"
Surrogate: Benzo (a) pyrene-d12	106 %	60-130	"	"	"

Origins Laboratory, Inc.



The results in this report apply to the samples analyzed in accordance with the chain of custody document. This analytical report must be reproduced in its entirety.

Eagle Environmental Consulting, LLC
8000 W 44th Ave
Wheat Ridge CO 80033

Dan Coloccia
Project Number: [none]
Project: Murfin - Moonraker 6-27

PW-B01-1@3'

4/23/2024 8:20:00AM

Analyte	Result	Min Detection Limit	Reporting Limit	Units	Dilution	Batch	Prepared	Analyzed	Notes
---------	--------	---------------------	-----------------	-------	----------	-------	----------	----------	-------

Origins Laboratory, Inc.
Y404641-03 (Soil)

Table 915 metals by EPA 6020B

Arsenic	2.78	0.262	mg/kg	10	B4D2343	04/23/2024	04/24/2024
Barium	124	9.04	"	"	"	"	"
Cadmium	0.315	0.0904	"	"	"	"	"
Copper	11.8	9.04	"	"	"	"	"
Lead	13.4	0.904	"	"	"	"	"
Nickel	9.92	0.904	"	"	"	"	"
Selenium	ND	0.235	"	"	"	"	"
Silver	ND	0.0904	"	"	"	"	"
Zinc	54.7	33.4	"	"	"	"	"

Total Metals by 7196A

Hexavalent Chromium	ND	0.172	0.431	mg/kg dry	1	2603196	04/30/2024	05/01/2024	U
---------------------	----	-------	-------	-----------	---	---------	------------	------------	---

Origins Laboratory, Inc.



The results in this report apply to the samples analyzed in accordance with the chain of custody document. This analytical report must be reproduced in its entirety.

Eagle Environmental Consulting, LLC
8000 W 44th Ave
Wheat Ridge CO 80033

Dan Coloccia
Project Number: [none]
Project: Murfin - Moonraker 6-27

SEP-B01-1@3"
4/23/2024 8:22:00AM

Analyte	Result	Min Detection Limit	Reporting Limit	Units	Dilution	Batch	Prepared	Analyzed	Notes
---------	--------	------------------------	--------------------	-------	----------	-------	----------	----------	-------

Origins Laboratory, Inc.
Y404641-04 (Soil)

PAH by EPA 8270E

1-Methylnaphthalene	ND	0.002	mg/kg	1	B4D2544	04/25/2024	05/03/2024	Ua
2-Methylnaphthalene	ND	0.002	"	"	"	"	"	Ua
Acenaphthene	ND	0.020	"	"	"	"	"	Ua
Anthracene	ND	0.020	"	"	"	"	"	Ua
Benzo (a) anthracene	ND	0.005	"	"	"	"	"	Ua
Benzo (a) pyrene	ND	0.020	"	"	"	"	"	Ua
Benzo (b) fluoranthene	ND	0.020	"	"	"	"	"	Ua
Benzo (k) fluoranthene	ND	0.020	"	"	"	"	"	Ua
Chrysene	ND	0.020	"	"	"	"	"	Ua
Dibenz (a,h) anthracene	ND	0.020	"	"	"	"	"	Ua
Fluoranthene	ND	0.020	"	"	"	"	"	Ua
Fluorene	ND	0.020	"	"	"	"	"	Ua
Indeno (1,2,3-cd) pyrene	ND	0.020	"	"	"	"	"	Ua
Naphthalene	ND	0.002	"	"	"	"	"	Ua
Pyrene	ND	0.020	"	"	"	"	"	Ua

Surrogate: Fluorene-d10	101 %	60-130	"	"	"
Surrogate: Anthracene-d10	95.9 %	60-130	"	"	"
Surrogate: Pyrene-d10	96.5 %	60-130	"	"	"
Surrogate: Benzo (a) pyrene-d12	103 %	60-130	"	"	"

Origins Laboratory, Inc.



The results in this report apply to the samples analyzed in accordance with the chain of custody document. This analytical report must be reproduced in its entirety.

Eagle Environmental Consulting, LLC
8000 W 44th Ave
Wheat Ridge CO 80033

Dan Coloccia
Project Number: [none]
Project: Murfin - Moonraker 6-27

SEP-B01-1@3"
4/23/2024 8:22:00AM

Analyte	Result	Min Detection Limit	Reporting Limit	Units	Dilution	Batch	Prepared	Analyzed	Notes
---------	--------	---------------------	-----------------	-------	----------	-------	----------	----------	-------

Origins Laboratory, Inc.
Y404641-04 (Soil)

Table 915 metals by EPA 6020B

Arsenic	2.62	0.285	mg/kg	10	B4D2343	04/23/2024	04/24/2024
Barium	113	9.82	"	"	"	"	"
Cadmium	0.332	0.0982	"	"	"	"	"
Copper	13.0	9.82	"	"	"	"	"
Lead	13.5	0.982	"	"	"	"	"
Nickel	10.1	0.982	"	"	"	"	"
Selenium	0.275	0.255	"	"	"	"	"
Silver	ND	0.0982	"	"	"	"	"
Zinc	59.6	36.3	"	"	"	"	"

Total Metals by 7196A

Hexavalent Chromium	ND	0.163	0.406	mg/kg dry	1	2603196	04/30/2024	05/01/2024	U
---------------------	----	-------	-------	-----------	---	---------	------------	------------	---

Origins Laboratory, Inc.



The results in this report apply to the samples analyzed in accordance with the chain of custody document. This analytical report must be reproduced in its entirety.

Eagle Environmental Consulting, LLC
8000 W 44th Ave
Wheat Ridge CO 80033

Dan Coloccia
Project Number: [none]
Project: Murfin - Moonraker 6-27

COM-B01-1@3"

4/23/2024 8:25:00AM

Analyte	Result	Min Detection Limit	Reporting Limit	Units	Dilution	Batch	Prepared	Analyzed	Notes
---------	--------	---------------------	-----------------	-------	----------	-------	----------	----------	-------

Origins Laboratory, Inc.
Y404641-05 (Soil)

PAH by EPA 8270E

1-Methylnaphthalene	ND	0.002	mg/kg	1	B4D2544	04/25/2024	05/03/2024	Ua
2-Methylnaphthalene	ND	0.002	"	"	"	"	"	Ua
Acenaphthene	ND	0.020	"	"	"	"	"	Ua
Anthracene	ND	0.020	"	"	"	"	"	Ua
Benzo (a) anthracene	ND	0.005	"	"	"	"	"	Ua
Benzo (a) pyrene	ND	0.020	"	"	"	"	"	Ua
Benzo (b) fluoranthene	ND	0.020	"	"	"	"	"	Ua
Benzo (k) fluoranthene	ND	0.020	"	"	"	"	"	Ua
Chrysene	ND	0.020	"	"	"	"	"	Ua
Dibenz (a,h) anthracene	ND	0.020	"	"	"	"	"	Ua
Fluoranthene	ND	0.020	"	"	"	"	"	Ua
Fluorene	ND	0.020	"	"	"	"	"	Ua
Indeno (1,2,3-cd) pyrene	ND	0.020	"	"	"	"	"	Ua
Naphthalene	ND	0.002	"	"	"	"	"	Ua
Pyrene	ND	0.020	"	"	"	"	"	Ua

Surrogate: Fluorene-d10	102 %	60-130	"	"	"
Surrogate: Anthracene-d10	95.6 %	60-130	"	"	"
Surrogate: Pyrene-d10	101 %	60-130	"	"	"
Surrogate: Benzo (a) pyrene-d12	105 %	60-130	"	"	"

Origins Laboratory, Inc.



The results in this report apply to the samples analyzed in accordance with the chain of custody document. This analytical report must be reproduced in its entirety.

Eagle Environmental Consulting, LLC
8000 W 44th Ave
Wheat Ridge CO 80033

Dan Coloccia
Project Number: [none]
Project: Murfin - Moonraker 6-27

COM-B01-1@3"

4/23/2024 8:25:00AM

Analyte	Result	Min Detection Limit	Reporting Limit	Units	Dilution	Batch	Prepared	Analyzed	Notes
---------	--------	---------------------	-----------------	-------	----------	-------	----------	----------	-------

Origins Laboratory, Inc.
Y404641-05 (Soil)

Table 915 metals by EPA 6020B

Arsenic	3.09	0.266	mg/kg	10	B4D2343	04/23/2024	04/24/2024
Barium	116	9.18	"	"	"	"	"
Cadmium	0.330	0.0918	"	"	"	"	"
Copper	12.4	9.18	"	"	"	"	"
Lead	13.9	0.918	"	"	"	"	"
Nickel	10.1	0.918	"	"	"	"	"
Selenium	ND	0.239	"	"	"	"	"
Silver	ND	0.0918	"	"	"	"	"
Zinc	56.5	34.0	"	"	"	"	"

Total Metals by 7196A

Hexavalent Chromium	ND	0.133	0.333	mg/kg dry	1	2603196	04/30/2024	05/01/2024	U
---------------------	----	-------	-------	-----------	---	---------	------------	------------	---

Origins Laboratory, Inc.



The results in this report apply to the samples analyzed in accordance with the chain of custody document. This analytical report must be reproduced in its entirety.

Eagle Environmental Consulting, LLC
8000 W 44th Ave
Wheat Ridge CO 80033

Dan Coloccia
Project Number: [none]
Project: Murfin - Moonraker 6-27

COM-B02-1@3"

4/23/2024 8:28:00AM

Analyte	Result	Min Detection Limit	Reporting Limit	Units	Dilution	Batch	Prepared	Analyzed	Notes
---------	--------	---------------------	-----------------	-------	----------	-------	----------	----------	-------

Origins Laboratory, Inc.
Y404641-06 (Soil)

PAH by EPA 8270E

1-Methylnaphthalene	ND	0.002	mg/kg	1	B4D2544	04/25/2024	05/03/2024	Ua
2-Methylnaphthalene	ND	0.002	"	"	"	"	"	Ua
Acenaphthene	ND	0.020	"	"	"	"	"	Ua
Anthracene	ND	0.020	"	"	"	"	"	Ua
Benzo (a) anthracene	ND	0.005	"	"	"	"	"	Ua
Benzo (a) pyrene	ND	0.020	"	"	"	"	"	Ua
Benzo (b) fluoranthene	ND	0.020	"	"	"	"	"	Ua
Benzo (k) fluoranthene	ND	0.020	"	"	"	"	"	Ua
Chrysene	ND	0.020	"	"	"	"	"	Ua
Dibenz (a,h) anthracene	ND	0.020	"	"	"	"	"	Ua
Fluoranthene	ND	0.020	"	"	"	"	"	Ua
Fluorene	ND	0.020	"	"	"	"	"	Ua
Indeno (1,2,3-cd) pyrene	ND	0.020	"	"	"	"	"	Ua
Naphthalene	ND	0.002	"	"	"	"	"	Ua
Pyrene	ND	0.020	"	"	"	"	"	Ua

Surrogate: Fluorene-d10	101 %	60-130	"	"	"
Surrogate: Anthracene-d10	94.9 %	60-130	"	"	"
Surrogate: Pyrene-d10	96.2 %	60-130	"	"	"
Surrogate: Benzo (a) pyrene-d12	105 %	60-130	"	"	"

Origins Laboratory, Inc.



The results in this report apply to the samples analyzed in accordance with the chain of custody document. This analytical report must be reproduced in its entirety.

Eagle Environmental Consulting, LLC
8000 W 44th Ave
Wheat Ridge CO 80033

Dan Coloccia
Project Number: [none]
Project: Murfin - Moonraker 6-27

COM-B02-1@3"

4/23/2024 8:28:00AM

Analyte	Result	Min Detection Limit	Reporting Limit	Units	Dilution	Batch	Prepared	Analyzed	Notes
---------	--------	---------------------	-----------------	-------	----------	-------	----------	----------	-------

Origins Laboratory, Inc.
Y404641-06 (Soil)

Table 915 metals by EPA 6020B

Arsenic	2.29	0.259	mg/kg	10	B4D2343	04/23/2024	04/24/2024
Barium	110	8.95	"	"	"	"	"
Cadmium	0.329	0.0895	"	"	"	"	"
Copper	10.9	8.95	"	"	"	"	"
Lead	13.1	0.895	"	"	"	"	"
Nickel	8.86	0.895	"	"	"	"	"
Selenium	ND	0.233	"	"	"	"	"
Silver	ND	0.0895	"	"	"	"	"
Zinc	59.9	33.1	"	"	"	"	"

Total Metals by 7196A

Hexavalent Chromium	ND	0.172	0.429	mg/kg dry	1	2603196	04/30/2024	05/01/2024	U
---------------------	----	-------	-------	-----------	---	---------	------------	------------	---

Origins Laboratory, Inc.



The results in this report apply to the samples analyzed in accordance with the chain of custody document. This analytical report must be reproduced in its entirety.

Eagle Environmental Consulting, LLC
8000 W 44th Ave
Wheat Ridge CO 80033

Dan Coloccia
Project Number: [none]
Project: Murfin - Moonraker 6-27

WH-B01-1@6'
4/23/2024 9:00:00AM

Analyte	Result	Min Detection Limit	Reporting Limit	Units	Dilution	Batch	Prepared	Analyzed	Notes
---------	--------	---------------------	-----------------	-------	----------	-------	----------	----------	-------

Origins Laboratory, Inc.
Y404641-07 (Soil)

PAH by EPA 8270E

1-Methylnaphthalene	ND	0.002	mg/kg	1	B4D2544	04/25/2024	05/03/2024	Ua
2-Methylnaphthalene	ND	0.002	"	"	"	"	"	Ua
Acenaphthene	ND	0.020	"	"	"	"	"	Ua
Anthracene	ND	0.020	"	"	"	"	"	Ua
Benzo (a) anthracene	ND	0.005	"	"	"	"	"	Ua
Benzo (a) pyrene	ND	0.020	"	"	"	"	"	Ua
Benzo (b) fluoranthene	ND	0.020	"	"	"	"	"	Ua
Benzo (k) fluoranthene	ND	0.020	"	"	"	"	"	Ua
Chrysene	ND	0.020	"	"	"	"	"	Ua
Dibenz (a,h) anthracene	ND	0.020	"	"	"	"	"	Ua
Fluoranthene	ND	0.020	"	"	"	"	"	Ua
Fluorene	ND	0.020	"	"	"	"	"	Ua
Indeno (1,2,3-cd) pyrene	ND	0.020	"	"	"	"	"	Ua
Naphthalene	ND	0.002	"	"	"	"	"	Ua
Pyrene	ND	0.020	"	"	"	"	"	Ua

Surrogate: Fluorene-d10	101 %	60-130	"	"	"
Surrogate: Anthracene-d10	95.9 %	60-130	"	"	"
Surrogate: Pyrene-d10	91.1 %	60-130	"	"	"
Surrogate: Benzo (a) pyrene-d12	105 %	60-130	"	"	"

Origins Laboratory, Inc.



The results in this report apply to the samples analyzed in accordance with the chain of custody document. This analytical report must be reproduced in its entirety.

Eagle Environmental Consulting, LLC
8000 W 44th Ave
Wheat Ridge CO 80033

Dan Coloccia
Project Number: [none]
Project: Murfin - Moonraker 6-27

WH-B01-1@6'
4/23/2024 9:00:00AM

Analyte	Result	Min Detection Limit	Reporting Limit	Units	Dilution	Batch	Prepared	Analyzed	Notes
---------	--------	---------------------	-----------------	-------	----------	-------	----------	----------	-------

Origins Laboratory, Inc.
Y404641-07 (Soil)

Table 915 metals by EPA 6020B

Arsenic	3.21	0.281	mg/kg	10	B4D2343	04/23/2024	04/24/2024
Barium	111	9.68	"	"	"	"	"
Cadmium	0.156	0.0968	"	"	"	"	"
Copper	9.72	9.68	"	"	"	"	"
Lead	9.59	0.968	"	"	"	"	"
Nickel	9.54	0.968	"	"	"	"	"
Selenium	ND	0.252	"	"	"	"	"
Silver	ND	0.0968	"	"	"	"	"
Zinc	40.8	35.8	"	"	"	"	"

Total Metals by 7196A

Hexavalent Chromium	ND	0.151	0.377	mg/kg dry	1	2603196	04/30/2024	05/01/2024	U
---------------------	----	-------	-------	-----------	---	---------	------------	------------	---

Origins Laboratory, Inc.



The results in this report apply to the samples analyzed in accordance with the chain of custody document. This analytical report must be reproduced in its entirety.

Eagle Environmental Consulting, LLC
8000 W 44th Ave
Wheat Ridge CO 80033

Dan Coloccia
Project Number: [none]
Project: Murfin - Moonraker 6-27

FL-B01-1@4'

4/23/2024 9:10:00AM

Analyte	Result	Min Detection Limit	Reporting Limit	Units	Dilution	Batch	Prepared	Analyzed	Notes
---------	--------	---------------------	-----------------	-------	----------	-------	----------	----------	-------

Origins Laboratory, Inc.
Y404641-08 (Soil)

PAH by EPA 8270E

1-Methylnaphthalene	ND	0.002	mg/kg	1	B4D2544	04/25/2024	05/03/2024	Ua
2-Methylnaphthalene	ND	0.002	"	"	"	"	"	Ua
Acenaphthene	ND	0.020	"	"	"	"	"	Ua
Anthracene	ND	0.020	"	"	"	"	"	Ua
Benzo (a) anthracene	ND	0.005	"	"	"	"	"	Ua
Benzo (a) pyrene	ND	0.020	"	"	"	"	"	Ua
Benzo (b) fluoranthene	ND	0.020	"	"	"	"	"	Ua
Benzo (k) fluoranthene	ND	0.020	"	"	"	"	"	Ua
Chrysene	ND	0.020	"	"	"	"	"	Ua
Dibenz (a,h) anthracene	ND	0.020	"	"	"	"	"	Ua
Fluoranthene	ND	0.020	"	"	"	"	"	Ua
Fluorene	ND	0.020	"	"	"	"	"	Ua
Indeno (1,2,3-cd) pyrene	ND	0.020	"	"	"	"	"	Ua
Naphthalene	ND	0.002	"	"	"	"	"	Ua
Pyrene	ND	0.020	"	"	"	"	"	Ua

Surrogate: Fluorene-d10	101 %	60-130	"	"	"
Surrogate: Anthracene-d10	95.3 %	60-130	"	"	"
Surrogate: Pyrene-d10	116 %	60-130	"	"	"
Surrogate: Benzo (a) pyrene-d12	107 %	60-130	"	"	"

Origins Laboratory, Inc.



The results in this report apply to the samples analyzed in accordance with the chain of custody document. This analytical report must be reproduced in its entirety.

Eagle Environmental Consulting, LLC
8000 W 44th Ave
Wheat Ridge CO 80033

Dan Coloccia
Project Number: [none]
Project: Murfin - Moonraker 6-27

FL-B01-1@4'

4/23/2024 9:10:00AM

Analyte	Result	Min Detection Limit	Reporting Limit	Units	Dilution	Batch	Prepared	Analyzed	Notes
---------	--------	---------------------	-----------------	-------	----------	-------	----------	----------	-------

Origins Laboratory, Inc.
Y404641-08 (Soil)

Table 915 metals by EPA 6020B

Arsenic	2.33	0.256	mg/kg	10	B4D2343	04/23/2024	04/24/2024
Barium	47.5	8.82	"	"	"	"	"
Cadmium	0.113	0.0882	"	"	"	"	"
Copper	ND	8.82	"	"	"	"	"
Lead	2.66	0.882	"	"	"	"	"
Nickel	3.94	0.882	"	"	"	"	"
Selenium	ND	0.229	"	"	"	"	"
Silver	ND	0.0882	"	"	"	"	"
Zinc	ND	32.6	"	"	"	"	"

Total Metals by 7196A

Hexavalent Chromium	ND	0.156	0.389	mg/kg dry	1	2603196	04/30/2024	05/01/2024	U
---------------------	----	-------	-------	-----------	---	---------	------------	------------	---

Origins Laboratory, Inc.



The results in this report apply to the samples analyzed in accordance with the chain of custody document. This analytical report must be reproduced in its entirety.

Eagle Environmental Consulting, LLC
8000 W 44th Ave
Wheat Ridge CO 80033

Dan Coloccia
Project Number: [none]
Project: Murfin - Moonraker 6-27

FL-B02-1@4'

4/23/2024 9:30:00AM

Analyte	Result	Min Detection Limit	Reporting Limit	Units	Dilution	Batch	Prepared	Analyzed	Notes
---------	--------	---------------------	-----------------	-------	----------	-------	----------	----------	-------

Origins Laboratory, Inc.
Y404641-09 (Soil)

PAH by EPA 8270E

1-Methylnaphthalene	ND	0.002	mg/kg	1	B4D2544	04/25/2024	05/03/2024	Ua
2-Methylnaphthalene	ND	0.002	"	"	"	"	"	Ua
Acenaphthene	ND	0.020	"	"	"	"	"	Ua
Anthracene	ND	0.020	"	"	"	"	"	Ua
Benzo (a) anthracene	ND	0.005	"	"	"	"	"	Ua
Benzo (a) pyrene	ND	0.020	"	"	"	"	"	Ua
Benzo (b) fluoranthene	ND	0.020	"	"	"	"	"	Ua
Benzo (k) fluoranthene	ND	0.020	"	"	"	"	"	Ua
Chrysene	ND	0.020	"	"	"	"	"	Ua
Dibenz (a,h) anthracene	ND	0.020	"	"	"	"	"	Ua
Fluoranthene	ND	0.020	"	"	"	"	"	Ua
Fluorene	ND	0.020	"	"	"	"	"	Ua
Indeno (1,2,3-cd) pyrene	ND	0.020	"	"	"	"	"	Ua
Naphthalene	ND	0.002	"	"	"	"	"	Ua
Pyrene	ND	0.020	"	"	"	"	"	Ua

Surrogate: Fluorene-d10	101 %	60-130	"	"	"
Surrogate: Anthracene-d10	95.7 %	60-130	"	"	"
Surrogate: Pyrene-d10	100 %	60-130	"	"	"
Surrogate: Benzo (a) pyrene-d12	106 %	60-130	"	"	"

Origins Laboratory, Inc.



The results in this report apply to the samples analyzed in accordance with the chain of custody document. This analytical report must be reproduced in its entirety.

Eagle Environmental Consulting, LLC
8000 W 44th Ave
Wheat Ridge CO 80033

Dan Coloccia
Project Number: [none]
Project: Murfin - Moonraker 6-27

FL-B02-1@4'

4/23/2024 9:30:00AM

Analyte	Result	Min Detection Limit	Reporting Limit	Units	Dilution	Batch	Prepared	Analyzed	Notes
---------	--------	---------------------	-----------------	-------	----------	-------	----------	----------	-------

Origins Laboratory, Inc.
Y404641-09 (Soil)

Table 915 metals by EPA 6020B

Arsenic	3.71	0.267	mg/kg	10	B4D2343	04/23/2024	04/24/2024
Barium	228	9.19	"	"	"	"	"
Cadmium	0.149	0.0919	"	"	"	"	"
Copper	9.75	9.19	"	"	"	"	"
Lead	10.1	0.919	"	"	"	"	"
Nickel	10.3	0.919	"	"	"	"	"
Selenium	ND	0.239	"	"	"	"	"
Silver	ND	0.0919	"	"	"	"	"
Zinc	40.9	34.0	"	"	"	"	"

Total Metals by 7196A

Hexavalent Chromium	ND	0.159	0.398	mg/kg dry	1	2603196	04/30/2024	05/01/2024	U
---------------------	----	-------	-------	-----------	---	---------	------------	------------	---

Origins Laboratory, Inc.



The results in this report apply to the samples analyzed in accordance with the chain of custody document. This analytical report must be reproduced in its entirety.

Eagle Environmental Consulting, LLC
8000 W 44th Ave
Wheat Ridge CO 80033

Dan Coloccia
Project Number: [none]
Project: Murfin - Moonraker 6-27

FL-B03-1@4'

4/23/2024 9:40:00AM

Analyte	Result	Min Detection Limit	Reporting Limit	Units	Dilution	Batch	Prepared	Analyzed	Notes
---------	--------	---------------------	-----------------	-------	----------	-------	----------	----------	-------

Origins Laboratory, Inc.
Y404641-10 (Soil)

PAH by EPA 8270E

1-Methylnaphthalene	ND	0.002	mg/kg	1	B4D2544	04/25/2024	05/03/2024	Ua
2-Methylnaphthalene	ND	0.002	"	"	"	"	"	Ua
Acenaphthene	ND	0.020	"	"	"	"	"	Ua
Anthracene	ND	0.020	"	"	"	"	"	Ua
Benzo (a) anthracene	ND	0.005	"	"	"	"	"	Ua
Benzo (a) pyrene	ND	0.020	"	"	"	"	"	Ua
Benzo (b) fluoranthene	ND	0.020	"	"	"	"	"	Ua
Benzo (k) fluoranthene	ND	0.020	"	"	"	"	"	Ua
Chrysene	ND	0.020	"	"	"	"	"	Ua
Dibenz (a,h) anthracene	ND	0.020	"	"	"	"	"	Ua
Fluoranthene	ND	0.020	"	"	"	"	"	Ua
Fluorene	ND	0.020	"	"	"	"	"	Ua
Indeno (1,2,3-cd) pyrene	ND	0.020	"	"	"	"	"	Ua
Naphthalene	ND	0.002	"	"	"	"	"	Ua
Pyrene	ND	0.020	"	"	"	"	"	Ua

Surrogate: Fluorene-d10	101 %	60-130	"	"	"
Surrogate: Anthracene-d10	95.3 %	60-130	"	"	"
Surrogate: Pyrene-d10	115 %	60-130	"	"	"
Surrogate: Benzo (a) pyrene-d12	110 %	60-130	"	"	"

Origins Laboratory, Inc.



The results in this report apply to the samples analyzed in accordance with the chain of custody document. This analytical report must be reproduced in its entirety.

Eagle Environmental Consulting, LLC
8000 W 44th Ave
Wheat Ridge CO 80033

Dan Coloccia
Project Number: [none]
Project: Murfin - Moonraker 6-27

FL-B03-1@4'

4/23/2024 9:40:00AM

Analyte	Result	Min Detection Limit	Reporting Limit	Units	Dilution	Batch	Prepared	Analyzed	Notes
---------	--------	---------------------	-----------------	-------	----------	-------	----------	----------	-------

Origins Laboratory, Inc.
Y404641-10 (Soil)

Table 915 metals by EPA 6020B

Arsenic	1.31	0.253	mg/kg	10	B4D2343	04/23/2024	04/24/2024
Barium	40.7	8.71	"	"	"	"	"
Cadmium	ND	0.0871	"	"	"	"	"
Copper	ND	8.71	"	"	"	"	"
Lead	4.66	0.871	"	"	"	"	"
Nickel	3.61	0.871	"	"	"	"	"
Selenium	ND	0.227	"	"	"	"	"
Silver	ND	0.0871	"	"	"	"	"
Zinc	ND	32.2	"	"	"	"	"

Total Metals by 7196A

Hexavalent Chromium	ND	0.119	0.296	mg/kg dry	1	2603196	04/30/2024	05/01/2024	U
---------------------	----	-------	-------	-----------	---	---------	------------	------------	---

Origins Laboratory, Inc.



The results in this report apply to the samples analyzed in accordance with the chain of custody document. This analytical report must be reproduced in its entirety.

Eagle Environmental Consulting, LLC
8000 W 44th Ave
Wheat Ridge CO 80033

Dan Coloccia
Project Number: [none]
Project: Murfin - Moonraker 6-27

FL-B04-1@4'

4/23/2024 9:50:00AM

Analyte	Result	Min Detection Limit	Reporting Limit	Units	Dilution	Batch	Prepared	Analyzed	Notes
---------	--------	---------------------	-----------------	-------	----------	-------	----------	----------	-------

Origins Laboratory, Inc.
Y404641-11 (Soil)

PAH by EPA 8270E

1-Methylnaphthalene	ND	0.002	mg/kg	1	B4D2544	04/25/2024	05/03/2024	Ua
2-Methylnaphthalene	ND	0.002	"	"	"	"	"	Ua
Acenaphthene	ND	0.020	"	"	"	"	"	Ua
Anthracene	ND	0.020	"	"	"	"	"	Ua
Benzo (a) anthracene	ND	0.005	"	"	"	"	"	Ua
Benzo (a) pyrene	ND	0.020	"	"	"	"	"	Ua
Benzo (b) fluoranthene	ND	0.020	"	"	"	"	"	Ua
Benzo (k) fluoranthene	ND	0.020	"	"	"	"	"	Ua
Chrysene	ND	0.020	"	"	"	"	"	Ua
Dibenz (a,h) anthracene	ND	0.020	"	"	"	"	"	Ua
Fluoranthene	ND	0.020	"	"	"	"	"	Ua
Fluorene	ND	0.020	"	"	"	"	"	Ua
Indeno (1,2,3-cd) pyrene	ND	0.020	"	"	"	"	"	Ua
Naphthalene	ND	0.002	"	"	"	"	"	Ua
Pyrene	ND	0.020	"	"	"	"	"	Ua

Surrogate: Fluorene-d10	101 %	60-130	"	"	"
Surrogate: Anthracene-d10	95.9 %	60-130	"	"	"
Surrogate: Pyrene-d10	115 %	60-130	"	"	"
Surrogate: Benzo (a) pyrene-d12	111 %	60-130	"	"	"

Origins Laboratory, Inc.



The results in this report apply to the samples analyzed in accordance with the chain of custody document. This analytical report must be reproduced in its entirety.

Eagle Environmental Consulting, LLC
8000 W 44th Ave
Wheat Ridge CO 80033

Dan Coloccia
Project Number: [none]
Project: Murfin - Moonraker 6-27

FL-B04-1@4'

4/23/2024 9:50:00AM

Analyte	Result	Min Detection Limit	Reporting Limit	Units	Dilution	Batch	Prepared	Analyzed	Notes
---------	--------	---------------------	-----------------	-------	----------	-------	----------	----------	-------

Origins Laboratory, Inc.
Y404641-11 (Soil)

Table 915 metals by EPA 6020B

Arsenic	8.05	0.246	mg/kg	10	B4D2343	04/23/2024	04/24/2024
Barium	462	8.47	"	"	"	"	"
Cadmium	0.320	0.0847	"	"	"	"	"
Copper	16.8	8.47	"	"	"	"	"
Lead	15.5	0.847	"	"	"	"	"
Nickel	17.3	0.847	"	"	"	"	"
Selenium	ND	0.220	"	"	"	"	"
Silver	ND	0.0847	"	"	"	"	"
Zinc	69.1	31.3	"	"	"	"	"

Total Metals by 7196A

Hexavalent Chromium	ND	0.171	0.429	mg/kg dry	1	2603196	04/30/2024	05/01/2024	U
---------------------	----	-------	-------	-----------	---	---------	------------	------------	---

Origins Laboratory, Inc.



The results in this report apply to the samples analyzed in accordance with the chain of custody document. This analytical report must be reproduced in its entirety.

Eagle Environmental Consulting, LLC
8000 W 44th Ave
Wheat Ridge CO 80033

Dan Coloccia
Project Number: [none]
Project: Murfin - Moonraker 6-27

WH-BG02@4'

4/23/2024 10:00:00AM

Analyte	Result	Min Detection Limit	Reporting Limit	Units	Dilution	Batch	Prepared	Analyzed	Notes
---------	--------	---------------------	-----------------	-------	----------	-------	----------	----------	-------

Origins Laboratory, Inc.
Y404641-12 (Soil)

Table 915 metals by EPA 6020B

Arsenic	5.18	0.280	mg/kg	10	B4D2343	04/23/2024	04/24/2024
Barium	151	9.64	"	"	"	"	"
Cadmium	0.214	0.0964	"	"	"	"	"
Copper	13.9	9.64	"	"	"	"	"
Lead	13.7	0.964	"	"	"	"	"
Nickel	14.7	0.964	"	"	"	"	"
Selenium	ND	0.251	"	"	"	"	"
Silver	ND	0.0964	"	"	"	"	"
Zinc	57.2	35.7	"	"	"	"	"

Total Metals by 7196A

Hexavalent Chromium	ND	0.174	0.436	mg/kg dry	1	2603196	04/30/2024	05/01/2024	U
---------------------	----	-------	-------	-----------	---	---------	------------	------------	---

Origins Laboratory, Inc.



The results in this report apply to the samples analyzed in accordance with the chain of custody document. This analytical report must be reproduced in its entirety.

Eagle Environmental Consulting, LLC
8000 W 44th Ave
Wheat Ridge CO 80033

Dan Coloccia
Project Number: [none]
Project: Murfin - Moonraker 6-27

WH-BG03@4'

4/23/2024 10:10:00AM

Analyte	Result	Min Detection Limit	Reporting Limit	Units	Dilution	Batch	Prepared	Analyzed	Notes
---------	--------	---------------------	-----------------	-------	----------	-------	----------	----------	-------

Origins Laboratory, Inc.
Y404641-13 (Soil)

Table 915 metals by EPA 6020B

Arsenic	4.74	0.274	mg/kg	10	B4D2343	04/23/2024	04/24/2024
Barium	277	9.44	"	"	"	"	"
Cadmium	0.255	0.0944	"	"	"	"	"
Copper	12.4	9.44	"	"	"	"	"
Lead	11.9	0.944	"	"	"	"	"
Nickel	12.3	0.944	"	"	"	"	"
Selenium	ND	0.245	"	"	"	"	"
Silver	ND	0.0944	"	"	"	"	"
Zinc	49.1	34.9	"	"	"	"	"

Total Metals by 7196A

Hexavalent Chromium	ND	0.143	0.358	mg/kg dry	1	2603196	04/30/2024	05/01/2024	U
---------------------	----	-------	-------	-----------	---	---------	------------	------------	---

Origins Laboratory, Inc.



The results in this report apply to the samples analyzed in accordance with the chain of custody document. This analytical report must be reproduced in its entirety.

Eagle Environmental Consulting, LLC
8000 W 44th Ave
Wheat Ridge CO 80033

Dan Coloccia
Project Number: [none]
Project: Murfin - Moonraker 6-27

FL-BG01@4'

4/23/2024 10:20:00AM

Analyte	Result	Min Detection Limit	Reporting Limit	Units	Dilution	Batch	Prepared	Analyzed	Notes
---------	--------	---------------------	-----------------	-------	----------	-------	----------	----------	-------

Origins Laboratory, Inc.
Y404641-14 (Soil)

Table 915 metals by EPA 6020B

Arsenic	4.43	0.274	mg/kg	10	B4D2343	04/23/2024	04/24/2024
Barium	507	9.46	"	"	"	"	"
Cadmium	0.174	0.0946	"	"	"	"	"
Copper	12.0	9.46	"	"	"	"	"
Lead	12.3	0.946	"	"	"	"	"
Nickel	12.1	0.946	"	"	"	"	"
Selenium	ND	0.246	"	"	"	"	"
Silver	ND	0.0946	"	"	"	"	"
Zinc	51.6	35.0	"	"	"	"	"

Total Metals by 7196A

Hexavalent Chromium	ND	0.154	0.384	mg/kg dry	1	2603196	04/30/2024	05/01/2024	U
---------------------	----	-------	-------	-----------	---	---------	------------	------------	---

Origins Laboratory, Inc.



The results in this report apply to the samples analyzed in accordance with the chain of custody document. This analytical report must be reproduced in its entirety.

Eagle Environmental Consulting, LLC
8000 W 44th Ave
Wheat Ridge CO 80033

Dan Coloccia
Project Number: [none]
Project: Murfin - Moonraker 6-27

FL-BG02@3'

4/23/2024 10:30:00AM

Analyte	Result	Min Detection Limit	Reporting Limit	Units	Dilution	Batch	Prepared	Analyzed	Notes
---------	--------	---------------------	-----------------	-------	----------	-------	----------	----------	-------

Origins Laboratory, Inc.
Y404641-15 (Soil)

Table 915 metals by EPA 6020B

Arsenic	4.73	0.285	mg/kg	10	B4D2343	04/23/2024	04/24/2024
Barium	209	9.84	"	"	"	"	"
Cadmium	0.297	0.0984	"	"	"	"	"
Copper	15.0	9.84	"	"	"	"	"
Lead	14.9	0.984	"	"	"	"	"
Nickel	14.5	0.984	"	"	"	"	"
Selenium	ND	0.256	"	"	"	"	"
Silver	ND	0.0984	"	"	"	"	"
Zinc	70.0	36.4	"	"	"	"	"

Total Metals by 7196A

Hexavalent Chromium	ND	0.163	0.408	mg/kg dry	1	2603196	04/30/2024	05/01/2024	U
---------------------	----	-------	-------	-----------	---	---------	------------	------------	---

Origins Laboratory, Inc.



The results in this report apply to the samples analyzed in accordance with the chain of custody document. This analytical report must be reproduced in its entirety.

Eagle Environmental Consulting, LLC
8000 W 44th Ave
Wheat Ridge CO 80033

Dan Coloccia
Project Number: [none]
Project: Murfin - Moonraker 6-27

PW-BG02@3"

4/23/2024 10:40:00AM

Analyte	Result	Min Detection Limit	Reporting Limit	Units	Dilution	Batch	Prepared	Analyzed	Notes
---------	--------	---------------------	-----------------	-------	----------	-------	----------	----------	-------

Origins Laboratory, Inc.
Y404641-16 (Soil)

Table 915 metals by EPA 6020B

Arsenic	2.72	0.253	mg/kg	10	B4D2343	04/23/2024	04/24/2024
Barium	124	8.73	"	"	"	"	"
Cadmium	0.305	0.0873	"	"	"	"	"
Copper	11.2	8.73	"	"	"	"	"
Lead	11.5	0.873	"	"	"	"	"
Nickel	8.93	0.873	"	"	"	"	"
Selenium	ND	0.227	"	"	"	"	"
Silver	ND	0.0873	"	"	"	"	"
Zinc	48.9	32.3	"	"	"	"	"

Total Metals by 7196A

Hexavalent Chromium	ND	0.141	0.354	mg/kg dry	1	2603196	04/30/2024	05/01/2024	U
---------------------	----	-------	-------	-----------	---	---------	------------	------------	---

Origins Laboratory, Inc.



The results in this report apply to the samples analyzed in accordance with the chain of custody document. This analytical report must be reproduced in its entirety.

Eagle Environmental Consulting, LLC
8000 W 44th Ave
Wheat Ridge CO 80033

Dan Coloccia
Project Number: [none]
Project: Murfin - Moonraker 6-27

PW-BG03@3"

4/23/2024 10:45:00AM

Analyte	Result	Min Detection Limit	Reporting Limit	Units	Dilution	Batch	Prepared	Analyzed	Notes
---------	--------	---------------------	-----------------	-------	----------	-------	----------	----------	-------

Origins Laboratory, Inc.
Y404641-17 (Soil)

Table 915 metals by EPA 6020B

Arsenic	2.93	0.260	mg/kg	10	B4D2343	04/23/2024	04/24/2024
Barium	115	8.97	"	"	"	"	"
Cadmium	0.365	0.0897	"	"	"	"	"
Copper	12.5	8.97	"	"	"	"	"
Lead	15.0	0.897	"	"	"	"	"
Nickel	10.0	0.897	"	"	"	"	"
Selenium	ND	0.233	"	"	"	"	"
Silver	ND	0.0897	"	"	"	"	"
Zinc	58.2	33.2	"	"	"	"	"

Total Metals by 7196A

Hexavalent Chromium	ND	0.172	0.430	mg/kg dry	1	2603196	04/30/2024	05/01/2024	U
---------------------	----	-------	-------	-----------	---	---------	------------	------------	---

Origins Laboratory, Inc.



The results in this report apply to the samples analyzed in accordance with the chain of custody document. This analytical report must be reproduced in its entirety.

Eagle Environmental Consulting, LLC
8000 W 44th Ave
Wheat Ridge CO 80033

Dan Coloccia
Project Number: [none]
Project: Murfin - Moonraker 6-27

Metals by EPA 6000/7000 Series Methods - Quality Control

Origins Laboratory, Inc.

Analyte	Result	Reporting Limit	Units	Spike Level	Source Result	%REC	%REC Limits	RPD	RPD Limit	Notes
---------	--------	-----------------	-------	-------------	---------------	------	-------------	-----	-----------	-------

Batch B4D2343 - EPA 3050B

Blank (B4D2343-BLK1)

Prepared: 04/23/2024 Analyzed: 04/24/2024

Arsenic	ND	0.290	mg/kg
Barium	ND	10.0	"
Cadmium	ND	0.100	"
Copper	ND	10.0	"
Lead	ND	1.00	"
Nickel	ND	1.00	"
Selenium	ND	0.260	"
Silver	ND	0.100	"
Zinc	ND	37.0	"

LCS (B4D2343-BS1)

Prepared: 04/23/2024 Analyzed: 04/24/2024

Arsenic	5.32	0.290	mg/kg	5.00	106	80-120
Barium	580	10.0	"	500	116	80-120
Cadmium	5.82	0.100	"	5.00	116	80-120
Copper	55.3	10.0	"	50.0	111	80-120
Lead	5.78	1.00	"	5.00	116	80-120
Nickel	5.52	1.00	"	5.00	110	80-120
Selenium	9.56	0.260	"	9.50	101	80-120
Silver	5.73	0.100	"	5.00	115	80-120
Zinc	58.1	37.0	"	50.0	116	80-120

Matrix Spike (B4D2343-MS1)

Source: Y404641-01

Prepared: 04/23/2024 Analyzed: 04/24/2024

Arsenic	7.20	0.276	mg/kg	4.76	3.04	87.2	75-125
Barium	624	9.52	"	476	127	104	75-125
Cadmium	5.27	0.0952	"	4.76	0.322	104	75-125
Copper	55.9	9.52	"	47.6	12.3	91.5	75-125
Lead	18.0	0.952	"	4.76	14.3	76.5	75-125

Origins Laboratory, Inc.



The results in this report apply to the samples analyzed in accordance with the chain of custody document. This analytical report must be reproduced in its entirety.

Eagle Environmental Consulting, LLC
8000 W 44th Ave
Wheat Ridge CO 80033

Dan Coloccia
Project Number: [none]
Project: Murfin - Moonraker 6-27

Metals by EPA 6000/7000 Series Methods - Quality Control
Origins Laboratory, Inc.

Analyte	Result	Reporting Limit	Units	Spike Level	Source Result	%REC	%REC Limits	RPD	RPD Limit	Notes
Batch B4D2343 - EPA 3050B										
Matrix Spike (B4D2343-MS1)		Source: Y404641-01			Prepared: 04/23/2024 Analyzed: 04/24/2024					
Nickel	14.6	0.952	mg/kg	4.76	10.0	96.5	75-125			
Selenium	9.11	0.248	"	9.04	0.262	97.8	75-125			
Silver	4.92	0.0952	"	4.76	0.0516	102	75-125			
Zinc	103	35.2	"	47.6	60.1	90.2	75-125			
Matrix Spike Dup (B4D2343-MSD1)		Source: Y404641-01			Prepared: 04/23/2024 Analyzed: 04/24/2024					
Arsenic	7.75	0.261	mg/kg	4.49	3.04	105	75-125	7.47	20	
Barium	664	8.99	"	449	127	119	75-125	6.21	20	
Cadmium	5.28	0.0899	"	4.49	0.322	110	75-125	0.296	20	
Copper	60.2	8.99	"	44.9	12.3	107	75-125	7.45	20	
Lead	20.7	0.899	"	4.49	14.3	141	75-125	14.0	20	QM-07
Nickel	15.6	0.899	"	4.49	10.0	123	75-125	6.10	20	
Selenium	8.90	0.234	"	8.54	0.262	101	75-125	2.28	20	
Silver	4.80	0.0899	"	4.49	0.0516	106	75-125	2.37	20	
Zinc	108	33.3	"	44.9	60.1	107	75-125	5.08	20	

Origins Laboratory, Inc.



The results in this report apply to the samples analyzed in accordance with the chain of custody document. This analytical report must be reproduced in its entirety.

Eagle Environmental Consulting, LLC
8000 W 44th Ave
Wheat Ridge CO 80033

Dan Coloccia
Project Number: [none]
Project: Murfin - Moonraker 6-27

EPA 8270E (SW846) - Semivolatile Organic Compounds - Quality Control
Origins Laboratory, Inc.

Analyte	Result	Reporting Limit	Units	Spike Level	Source Result	%REC	%REC Limits	RPD	RPD Limit	Notes
---------	--------	-----------------	-------	-------------	---------------	------	-------------	-----	-----------	-------

Batch B4D2544 - EPA 3580

Blank (B4D2544-BLK1)

Prepared: 04/25/2024 Analyzed: 05/03/2024

1-Methylnaphthalene	ND	0.002	mg/kg							Ua
2-Methylnaphthalene	ND	0.002	"							Ua
Acenaphthene	ND	0.020	"							Ua
Anthracene	ND	0.020	"							Ua
Benzo (a) anthracene	ND	0.005	"							Ua
Benzo (a) pyrene	ND	0.020	"							Ua
Benzo (b) fluoranthene	ND	0.020	"							Ua
Benzo (g,h,i) perylene	ND	0.020	"							Ua
Benzo (k) fluoranthene	ND	0.020	"							Ua
Chrysene	ND	0.020	"							Ua
Dibenz (a,h) anthracene	ND	0.020	"							Ua
Fluoranthene	ND	0.020	"							Ua
Fluorene	ND	0.020	"							Ua
Indeno (1,2,3-cd) pyrene	ND	0.020	"							Ua
Naphthalene	ND	0.002	"							Ua
Phenanthrene	ND	0.020	"							Ua
Pyrene	ND	0.020	"							Ua

Surrogate: Fluorene-d10	200		ug/kg	200	101	60-130
Surrogate: Anthracene-d10	190		"	200	94.8	60-130
Surrogate: Pyrene-d10	210		"	200	103	60-130
Surrogate: Benzo (a) pyrene-d12	210		"	200	104	60-130

LCS (B4D2544-BS1)

Prepared: 04/25/2024 Analyzed: 05/03/2024

1-Methylnaphthalene	0.219	0.002	mg/kg	0.200	109	70-130
2-Methylnaphthalene	0.219	0.002	"	0.200	110	70-130
Acenaphthene	0.221	0.020	"	0.200	110	70-130
Anthracene	0.216	0.020	"	0.200	108	70-130

Origins Laboratory, Inc.



The results in this report apply to the samples analyzed in accordance with the chain of custody document. This analytical report must be reproduced in its entirety.

Eagle Environmental Consulting, LLC
8000 W 44th Ave
Wheat Ridge CO 80033

Dan Coloccia
Project Number: [none]
Project: Murfin - Moonraker 6-27

EPA 8270E (SW846) - Semivolatile Organic Compounds - Quality Control
Origins Laboratory, Inc.

Analyte	Result	Reporting Limit	Units	Spike Level	Source Result	%REC	%REC Limits	RPD	RPD Limit	Notes
---------	--------	-----------------	-------	-------------	---------------	------	-------------	-----	-----------	-------

Batch B4D2544 - EPA 3580

LCS (B4D2544-BS1)

Prepared: 04/25/2024 Analyzed: 05/03/2024

Benzo (a) anthracene	0.231	0.005	mg/kg	0.200		116	70-130
Benzo (a) pyrene	0.222	0.020	"	0.200		111	70-130
Benzo (b) fluoranthene	0.229	0.020	"	0.200		115	70-130
Benzo (g,h,i) perylene	0.226	0.020	"	0.200		113	70-130
Benzo (k) fluoranthene	0.202	0.020	"	0.200		101	70-130
Chrysene	0.235	0.020	"	0.200		117	70-130
Dibenz (a,h) anthracene	0.236	0.020	"	0.200		118	70-130
Fluoranthene	0.209	0.020	"	0.200		105	70-130
Fluorene	0.226	0.020	"	0.200		113	70-130
Indeno (1,2,3-cd) pyrene	0.216	0.020	"	0.200		108	70-130
Naphthalene	0.224	0.002	"	0.200		112	70-130
Phenanthrene	0.223	0.020	"	0.200		112	70-130
Pyrene	0.236	0.020	"	0.200		118	70-130
Surrogate: Fluorene-d10	200		ug/kg	200		101	60-130
Surrogate: Anthracene-d10	190		"	200		96.1	60-130
Surrogate: Pyrene-d10	220		"	200		108	60-130
Surrogate: Benzo (a) pyrene-d12	210		"	200		105	60-130

Matrix Spike (B4D2544-MS1)

Source: Y404641-01

Prepared: 04/25/2024 Analyzed: 05/03/2024

1-Methylnaphthalene	0.209	0.002	mg/kg	0.200	ND	105	70-130
2-Methylnaphthalene	0.209	0.002	"	0.200	ND	104	70-130
Acenaphthene	0.213	0.020	"	0.200	ND	106	70-130
Anthracene	0.207	0.020	"	0.200	ND	103	70-130
Benzo (a) anthracene	0.204	0.005	"	0.200	ND	102	70-130
Benzo (a) pyrene	0.214	0.020	"	0.200	ND	107	70-130
Benzo (b) fluoranthene	0.218	0.020	"	0.200	0.0007	108	70-130
Benzo (g,h,i) perylene	0.213	0.020	"	0.200	0.0008	106	70-130

Origins Laboratory, Inc.



The results in this report apply to the samples analyzed in accordance with the chain of custody document. This analytical report must be reproduced in its entirety.

Eagle Environmental Consulting, LLC
8000 W 44th Ave
Wheat Ridge CO 80033

Dan Coloccia
Project Number: [none]
Project: Murfin - Moonraker 6-27

EPA 8270E (SW846) - Semivolatile Organic Compounds - Quality Control
Origins Laboratory, Inc.

Analyte	Result	Reporting Limit	Units	Spike Level	Source Result	%REC	%REC Limits	RPD	RPD Limit	Notes
---------	--------	-----------------	-------	-------------	---------------	------	-------------	-----	-----------	-------

Batch B4D2544 - EPA 3580

Matrix Spike (B4D2544-MS1)		Source: Y404641-01			Prepared: 04/25/2024 Analyzed: 05/03/2024					
Benzo (k) fluoranthene	0.199	0.020	mg/kg	0.200	0.001	98.8	70-130			
Chrysene	0.219	0.020	"	0.200	0.0006	109	70-130			
Dibenz (a,h) anthracene	0.220	0.020	"	0.200	ND	110	70-130			
Fluoranthene	0.203	0.020	"	0.200	0.0006	101	70-130			
Fluorene	0.218	0.020	"	0.200	ND	109	70-130			
Indeno (1,2,3-cd) pyrene	0.205	0.020	"	0.200	0.002	102	70-130			
Naphthalene	0.215	0.002	"	0.200	ND	107	70-130			
Phenanthrene	0.212	0.020	"	0.200	ND	106	70-130			
Pyrene	0.205	0.020	"	0.200	0.0007	102	70-130			
Surrogate: Fluorene-d10	210		ug/kg	200		103	60-130			
Surrogate: Anthracene-d10	190		"	200		95.8	60-130			
Surrogate: Pyrene-d10	190		"	200		97.0	60-130			
Surrogate: Benzo (a) pyrene-d12	210		"	200		103	60-130			

Matrix Spike Dup (B4D2544-MSD1)		Source: Y404641-01			Prepared: 04/25/2024 Analyzed: 05/03/2024					
1-Methylnaphthalene	0.200	0.002	mg/kg	0.200	ND	99.8	70-130	4.79	20	
2-Methylnaphthalene	0.200	0.002	"	0.200	ND	99.8	70-130	4.62	20	
Acenaphthene	0.201	0.020	"	0.200	ND	100	70-130	5.97	20	
Anthracene	0.199	0.020	"	0.200	ND	99.5	70-130	3.74	20	
Benzo (a) anthracene	0.193	0.005	"	0.200	ND	96.6	70-130	5.33	20	
Benzo (a) pyrene	0.201	0.020	"	0.200	ND	100	70-130	6.39	20	
Benzo (b) fluoranthene	0.195	0.020	"	0.200	0.0007	96.9	70-130	11.2	20	
Benzo (g,h,i) perylene	0.187	0.020	"	0.200	0.0008	93.1	70-130	12.7	20	
Benzo (k) fluoranthene	0.185	0.020	"	0.200	0.001	92.1	70-130	7.06	20	
Chrysene	0.199	0.020	"	0.200	0.0006	99.1	70-130	9.55	20	
Dibenz (a,h) anthracene	0.200	0.020	"	0.200	ND	99.9	70-130	9.63	20	
Fluoranthene	0.192	0.020	"	0.200	0.0006	95.7	70-130	5.67	20	

Origins Laboratory, Inc.



The results in this report apply to the samples analyzed in accordance with the chain of custody document. This analytical report must be reproduced in its entirety.

Eagle Environmental Consulting, LLC
8000 W 44th Ave
Wheat Ridge CO 80033

Dan Coloccia
Project Number: [none]
Project: Murfin - Moonraker 6-27

EPA 8270E (SW846) - Semivolatile Organic Compounds - Quality Control
Origins Laboratory, Inc.

Analyte	Result	Reporting Limit	Units	Spike Level	Source Result	%REC	%REC Limits	RPD	RPD Limit	Notes
---------	--------	-----------------	-------	-------------	---------------	------	-------------	-----	-----------	-------

Batch B4D2544 - EPA 3580

Matrix Spike Dup (B4D2544-MSD1)		Source: Y404641-01			Prepared: 04/25/2024 Analyzed: 05/03/2024					
Fluorene	0.205	0.020	mg/kg	0.200	ND	103	70-130	5.74	20	
Indeno (1,2,3-cd) pyrene	0.183	0.020	"	0.200	0.002	90.3	70-130	11.6	20	
Naphthalene	0.204	0.002	"	0.200	ND	102	70-130	4.96	20	
Phenanthrene	0.202	0.020	"	0.200	ND	101	70-130	4.76	20	
Pyrene	0.193	0.020	"	0.200	0.0007	96.0	70-130	6.04	20	
Surrogate: Fluorene-d10	200		ug/kg	200		102	60-130			
Surrogate: Anthracene-d10	190		"	200		94.6	60-130			
Surrogate: Pyrene-d10	190		"	200		97.2	60-130			
Surrogate: Benzo (a) pyrene-d12	210		"	200		103	60-130			

Origins Laboratory, Inc.



The results in this report apply to the samples analyzed in accordance with the chain of custody document. This analytical report must be reproduced in its entirety.

Jordan A. Bynon, Project Manager

Eagle Environmental Consulting, LLC
8000 W 44th Ave
Wheat Ridge CO 80033

Dan Coloccia
Project Number: [none]
Project: Murfin - Moonraker 6-27

Total Metals by 7196A - Quality Control GEL Laboratories, LLC

Analyte	Result	Reporting Limit	Units	Spike Level	Source Result	%REC	%REC Limits	RPD	RPD Limit	Notes
Batch 2603196 - SW846 3060A										
BLANK (1205715683-BLK)					Prepared: 04/30/2024 Analyzed: 05/01/2024					
Hexavalent Chromium	ND	0.297	mg/kg				-			U
LCS (1205715684-BKS)					Prepared: 04/30/2024 Analyzed: 05/01/2024					
Hexavalent Chromium	3.88	0.394	mg/kg	3.94		98.6	80-120			
DUP (1205715685 D)					Source: Y404641-01 Prepared: 04/30/2024 Analyzed: 05/01/2024					
Hexavalent Chromium	ND	0.403	mg/kg dry		<0.161		0-50	N/A	50	U
MS (1205715686 S)					Source: Y404641-01 Prepared: 04/30/2024 Analyzed: 05/01/2024					
Hexavalent Chromium	1.47	0.370	mg/kg dry	3.70	<0.148	36.2	75-125			
DUP (1205715687 D)					Source: Y404641-11 Prepared: 04/30/2024 Analyzed: 05/01/2024					
Hexavalent Chromium	ND	0.429	mg/kg dry		<0.171		0-50	N/A	50	U
MS (1205715688 S)					Source: Y404641-11 Prepared: 04/30/2024 Analyzed: 05/01/2024					
Hexavalent Chromium	3.32	0.423	mg/kg dry	4.23	<0.169	76.4	75-125			
ILCS (1205715689-ILCS)					Prepared: 04/30/2024 Analyzed: 05/01/2024					
Hexavalent Chromium	5.30	0.259	mg/kg	5.21		102	80-120			

Origins Laboratory, Inc.



The results in this report apply to the samples analyzed in accordance with the chain of custody document. This analytical report must be reproduced in its entirety.

Eagle Environmental Consulting, LLC
8000 W 44th Ave
Wheat Ridge CO 80033

Dan Coloccia
Project Number: [none]
Project: Murfin - Moonraker 6-27

Notes and Definitions

Ua Sample is Non-Detect.

U Result not detected above the detection limit

QM-07 The spike recovery was outside acceptance limits for the MS and/or MSD. The batch was accepted based on acceptable LCS recovery.

ND Analyte NOT DETECTED at or above the reporting limit

RPD Relative Percent Difference

All soil results are reported on a wet weight basis.

Calculated results may use J-flag data (instead of reported "ND") as part of calculation to provide a more accurate result.

Origins Laboratory, Inc.



The results in this report apply to the samples analyzed in accordance with the chain of custody document. This analytical report must be reproduced in its entirety.