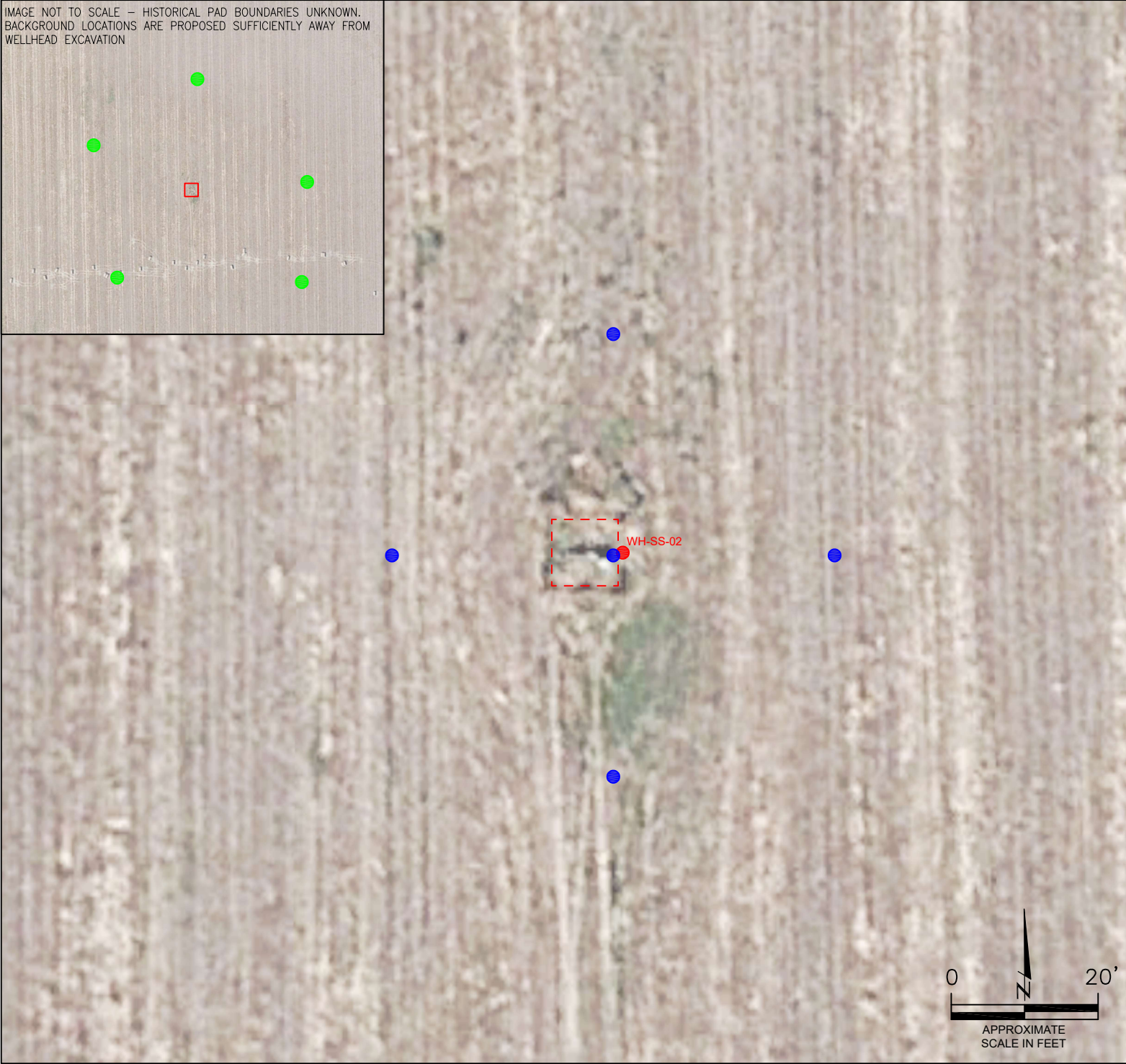


IMAGE NOT TO SCALE - HISTORICAL PAD BOUNDARIES UNKNOWN.
BACKGROUND LOCATIONS ARE PROPOSED SUFFICIENTLY AWAY FROM
WELLHEAD EXCAVATION



LEGEND

- INITIAL ASSESSMENT BOUNDARIES
- PREVIOUS SOIL SAMPLE LOCATIONS ABOVE ECMC
TABLE 915-1 REGULATORY LIMITS
- PROPOSED SOIL BORING LOCATIONS (5)*
TO BE COMPLETED AS MONITORING WELLS IF
GROUNDWATER IS ENCOUNTERED
- PROPOSED BACKGROUND SAMPLE LOCATIONS (5)

PROPOSED ASSESSMENT MAP
BAKER STATE B #36-12
CLOSURE ASSESSMENT
40.354080 / -104.504900
NE¼ SW¼ SEC.36 T5N R64W 6PM
WELD COUNTY, COLORADO
API # 05-123-17430
REMEDATION # 20770

FIGURE NO.
1

DRAWN BY:
AMN



EAGLE
ENVIRONMENTAL
CONSULTING, LLC
8000 W 44th Ave, Wheat Ridge, CO 80033
Ph: 303-433-0479 • F: 303-325-5449