



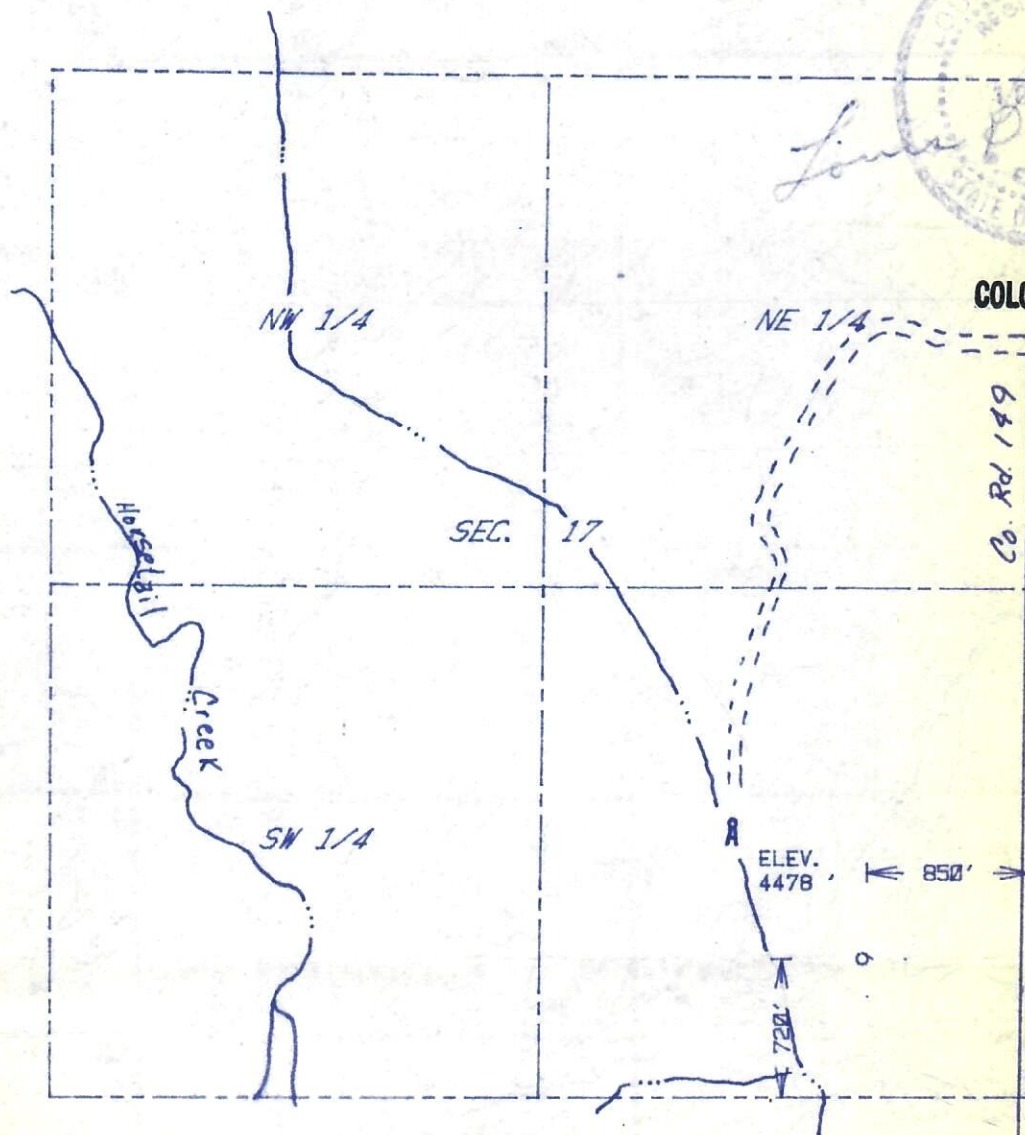
00264873

The accompanying plat is an accurate representation showing the location of a proposed well. This location may be described as a point 720 feet north of the south line, and 850 feet west of the east line of Section 17, Township 9 N Range 56 W of the 6th P.M., WELD COUNTY, COLORADO. The surface elevation at this point is 4478 feet m.s.l.

RECEIVED

AUG 10 1984

COLO. OIL &amp; GAS CONS. COMM.



RECEIVED

AUG 13 1984

COLO. OIL &amp; GAS CONS. COMM.

SCALE - 1"=1000'

- SURVEYED POINT
- REFERENCE STAKE ( 200 'S, 200 'E )
- SE 1/4 SEC. 17, T 9 N, R 56 W

1 mi. S.;  
2 mi. W. to  
Colo. 71;  
8.5 mi. S.  
to Stoneham

**HARMON**  
**ENGINEERING**  
**SERVICES**

MILLER #17-1

IMPACT ENERGY

WELD CO., COLORADO

4 AUGUST 1984



