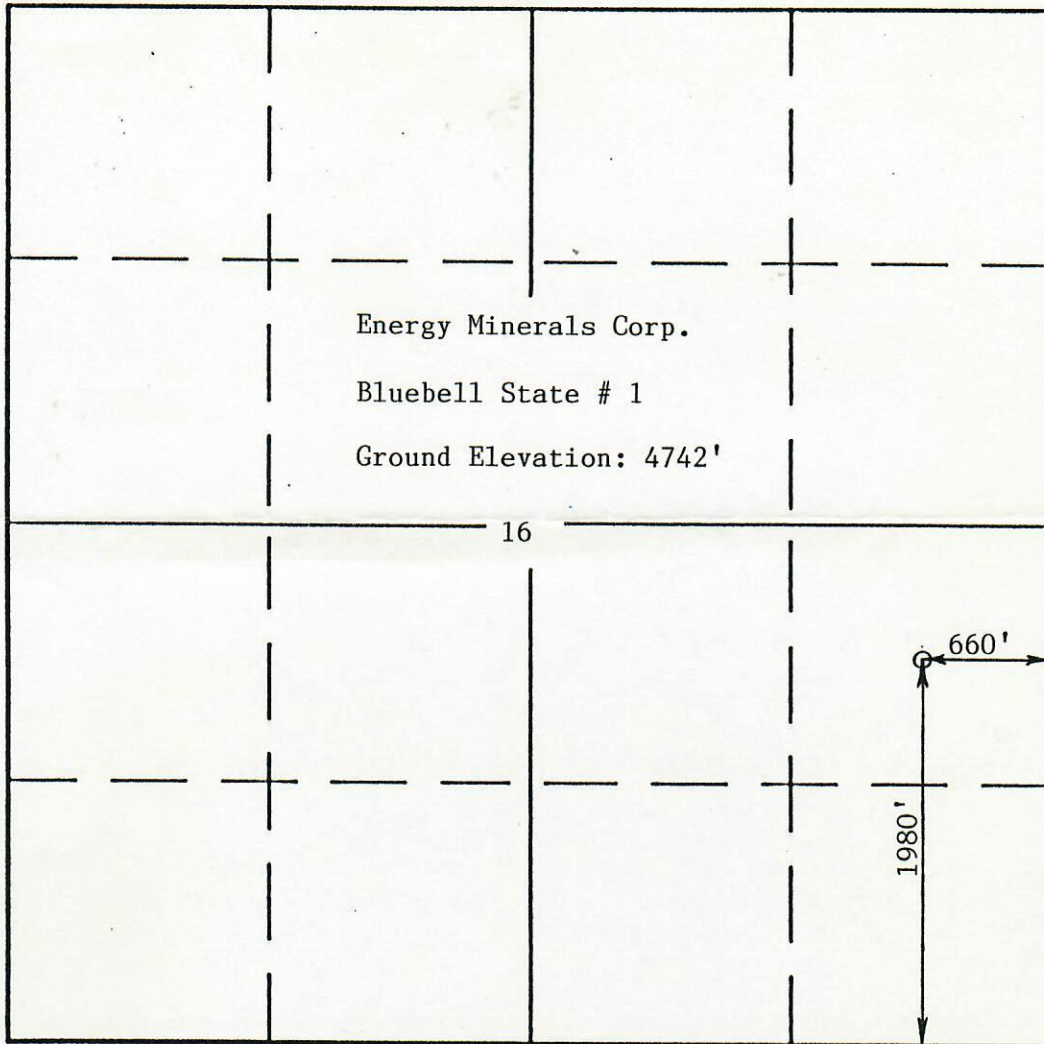




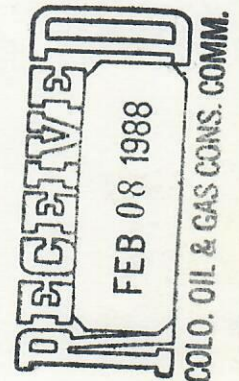
R58W

00225652

T7N



NORTH




WELL LOCATION PLAT

Flatirons Surveying, Inc., in accordance with a request from Energy Minerals Corp., has determined the location of the Bluebell State # 1 to be 1980' FSL and 660' FE L, in the NE 1/4 of the SE 1/4 of Section 16, T7N, R58W of the 6th Principal Meridian, Weld County, Colorado.

SURVEYOR'S CERTIFICATE

I, John B. Guyton, a Professional Land Surveyor in the State of Colorado do hereby certify that this survey was made under my direct supervision, and that this plat represents said survey.


John B. Guyton
Colorado P.L.S. #16406

DATE: January 27, 1988
FSI NO: 88-10579

Flatirons Surveying, Inc.
Boulder, Colorado