

LEGEND:

- = PROPOSED WELLHEAD.
- ◆ = TOP PRODUCTION ZONE.
- ◊ = MIDPOINT.
- = TARGET BOTTOM HOLE.
- ▲ = SECTION CORNERS LOCATED. (NAD 83)

T4S, R64W, 6th P.M.

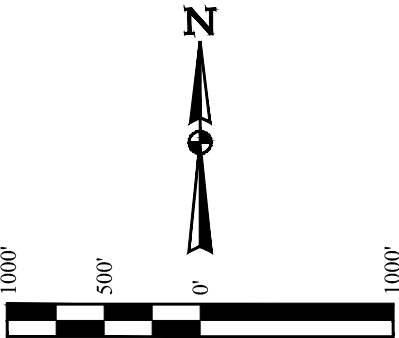
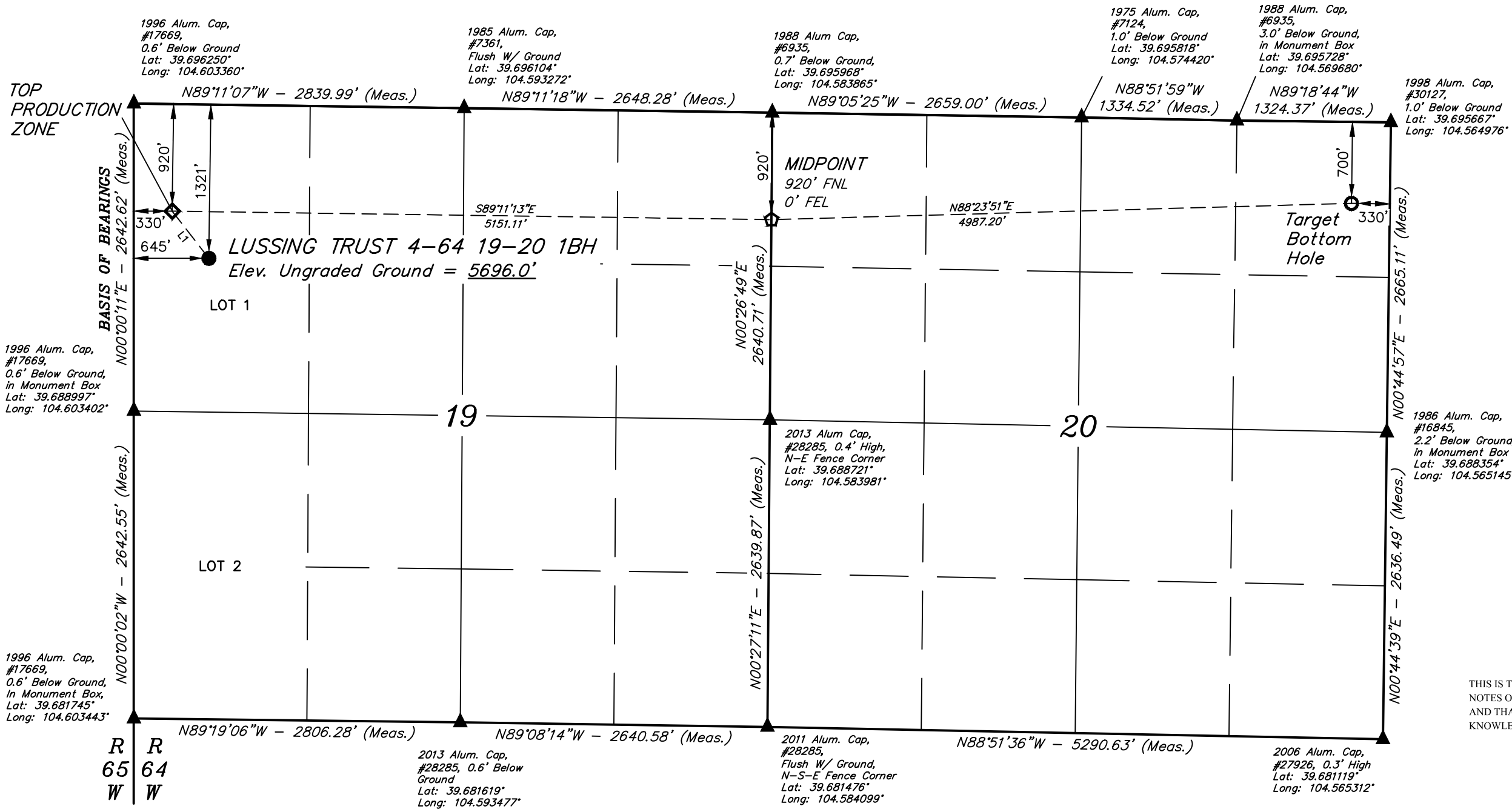
CRESTONE PEAK
RESOURCES OPERATING, LLC

LUSSING TRUST 4-64 19-20 1BH
LOT 1, SECTION 19, T4S, R64W, 6th P.M.
ARAPAHOE COUNTY, COLORADO

BASIS OF BEARINGS

TRANSVERSE MERCATOR PROJECTION WITH
A CENTRAL MERIDIAN OF W105°00'00".

LINE TABLE		
LINE	DIRECTION	LENGTH
L1	N37°49'44"W	513.58'



CERTIFICATE OF SURVEY
THIS IS TO CERTIFY THAT THE ABOVE PLAT WAS PREPARED FROM FIELD NOTES OF ACTUAL SURVEYS MADE BY ME OR UNDER MY SUPERVISION AND THAT THE SAME ARE TRUE AND CORRECT TO THE BEST OF MY KNOWLEDGE AND BELIEF.

REGISTERED LAND SURVEYOR
REGISTRATION NO. 28285
STATE OF COLORADO
JUL 28 2023

NOTE:
Distances referenced
on plat to section lines
are perpendicular.

PDOP = 1.6

NAD 83 (SURFACE HOLE LOCATION)	NAD 83 (TOP PRODUCTION ZONE)	NAD 83 (MIDPOINT)	NAD 83 (TARGET BOTTOM HOLE)
LATITUDE = 39°41'33.33" (39.692591°)	LATITUDE = 39°41'37.35" (39.693708°)	LATITUDE = 39°41'36.40" (39.693443°)	LATITUDE = 39°41'37.54" (39.693761°)
LONGITUDE = 104°36'03.92" (104.601090°)	LONGITUDE = 104°36'07.93" (104.602202°)	LONGITUDE = 104°35'02.06" (104.583905°)	LONGITUDE = 104°33'58.29" (104.566192°)
STATE PLANE NAD 83 (CO. CENTRAL)	STATE PLANE NAD 83 (CO. CENTRAL)	STATE PLANE NAD 83 (CO. CENTRAL)	STATE PLANE NAD 83 (CO. CENTRAL)
N: 1678406.75' E: 3252960.24'	N: 1678810.57' E: 3252643.14'	N: 1678765.55' E: 3257792.74'	N: 1678932.12' E: 3262775.88'



UELS, LLC
Corporate Office * 85 South 200 East
Vernal, UT 84078 * (435) 789-1017

SURVEYED BY	NATE WELCH	12-03-21	SCALE
DRAWN BY	K.C.	02-21-23	1" = 1000'

WELL LOCATION PLAT