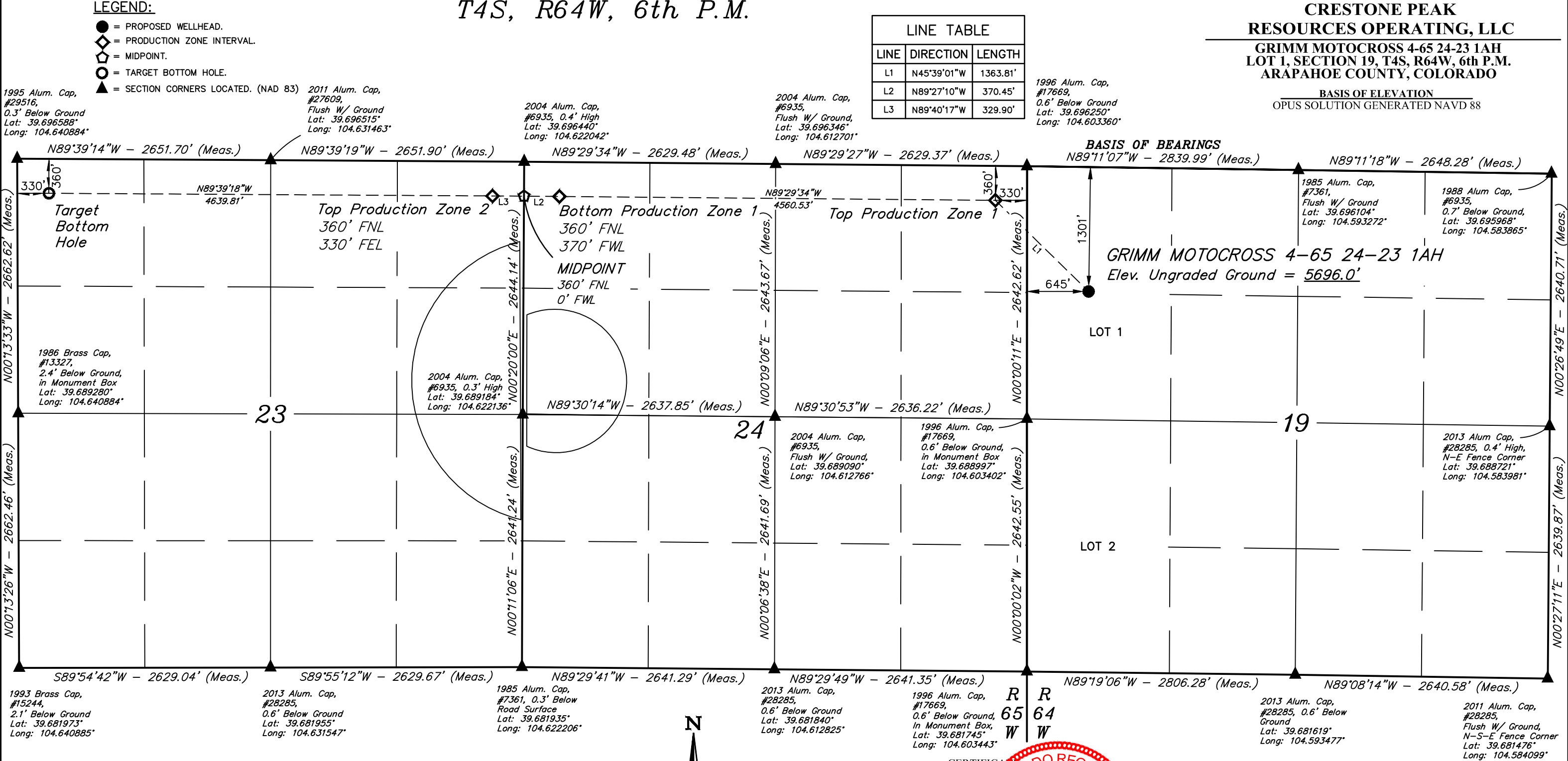


T4S, R64W, 6th P.M.

CRESTONE PEAK
RESOURCES OPERATING, LLC
GRIMM MOTOCROSS 4-65 24-23 1AH
LOT 1, SECTION 19, T4S, R64W, 6th P.M.
ARAPAHOE COUNTY, COLORADO

BASIS OF ELEVATION
OPUS SOLUTION GENERATED NAVD 88

LINE TABLE		
LINE	DIRECTION	LENGTH
L1	N45°39'01"W	1363.81'
L2	N89°27'10"W	370.45'
L3	N89°40'17"W	329.90'



NOTE:
Distances referenced on plat to section lines are perpendicular.

PDOP = 1.3

THIS IS TO CERTIFY THAT THE ABOVE PLAT WAS PREPARED FROM FIELD NOTES OF ACTUAL SURVEYS MADE BY ME OR UNDER MY SUPERVISION, AND THAT THE SAME ARE TRUE AND CORRECT TO THE BEST OF MY KNOWLEDGE AND BELIEF.

CERTIFICATION

REGISTERED LAND SURVEYOR
REGISTRATION NO. 28285
STATE OF COLORADO

REV: 01 11-07-23 K.C. (ADD TPZ 1, BPZ1, TPZ 2 & LATERAL CHANGE)

NAD 83 (SURFACE LOCATION)	NAD 83 (TOP PRODUCTION ZONE 1)	NAD 83 (BOTTOM PRODUCTION ZONE 1)	NAD 83 (MIDPOINT)	NAD 83 (TOP PRODUCTION ZONE 2)	NAD 83 (TARGET BOTTOM HOLE)
LATITUDE = 39°41'33.52" (39.692646°)	LATITUDE = 39°41'42.99" (39.695274°)	LATITUDE = 39°41'43.58" (39.695439°)	LATITUDE = 39°41'43.63" (39.695453°)	LATITUDE = 39°41'43.66" (39.695462°)	LATITUDE = 39°41'44.13" (39.695591°)
LONGITUDE = 104°36'03.92" (104.601089°)	LONGITUDE = 104°36'16.34" (104.604539°)	LONGITUDE = 104°37'14.66" (104.620740°)	LONGITUDE = 104°37'19.40" (104.622056°)	LONGITUDE = 104°37'23.62" (104.623228°)	LONGITUDE = 104°38'22.96" (104.639711°)
STATE PLANE NAD 83 (CO. CENTRAL)	STATE PLANE NAD 83 (CO. CENTRAL)	STATE PLANE NAD 83 (CO. CENTRAL)	STATE PLANE NAD 83 (CO. CENTRAL)	STATE PLANE NAD 83 (CO. CENTRAL)	STATE PLANE NAD 83 (CO. CENTRAL)
N: 1678426.75' E: 3252960.14'	N: 1679374.53' E: 3251979.97'	N: 1679390.05' E: 3247420.62'	N: 1679391.57' E: 3247050.26'	N: 1679391.66' E: 3246720.44'	N: 1679394.30' E: 3242081.81'

UINTEAH
ENGINEERING & LAND SURVEYING

UELS, LLC
Corporate Office * 85 South 200 East
Vernal, UT 84078 * (435) 789-1017

SURVEYED BY	NATE WELCH	12-03-21	SCALE
DRAWN BY	K.C.	02-21-23	1" = 1000'

WELL LOCATION PLAT