

**KT Resources LLC  
WRD Federal 19-31  
Location ID: 316279**



**When replaced additional information is required**



**Equipment leak**

**KT Resources LLC  
WRD Federal 19-31  
Location ID: 316279**



**Erosion and sediment migration**



**Erosion and sediment migration**

**KT Resources LLC  
WRD Federal 19-31  
Location ID: 316279**



Apr. 18, 2024 at 9:42:50 AM

**Erosion and sediment migration**



Apr. 18, 2024 at 9:43:01 AM

**Erosion and sediment migration**



**KT Resources LLC  
WRD Federal 19-31  
Location ID: 316279**



**Erosion and sediment migration**



**Erosion and sediment migration**

**KT Resources LLC  
WRD Federal 19-31  
Location ID: 316279**



**Incomplete cleanup of previous spill**



**Oil spill cleanup incomplete. Cattle in the area.**

**KT Resources LLC  
WRD Federal 19-31  
Location ID: 316279**



**Metal berm seepage**



**Oil spill cleanup incomplete. Cattle in the area.**

**KT Resources LLC  
WRD Federal 19-31  
Location ID: 316279**



**Oil spill cleanup incomplete. Cattle in the area.**



**Metal berm leakage**

**KT Resources LLC  
WRD Federal 19-31  
Location ID: 316279**



**Oil spill cleanup incomplete. Cattle in the area.**



**Oil spill cleanup incomplete. Cattle in the area.**

**KT Resources LLC  
WRD Federal 19-31  
Location ID: 316279**



**Stained soil outside of berm**



**Well sign missing required information**

**KT Resources LLC  
WRD Federal 19-31  
Location ID: 316279**



**Sediment migration**

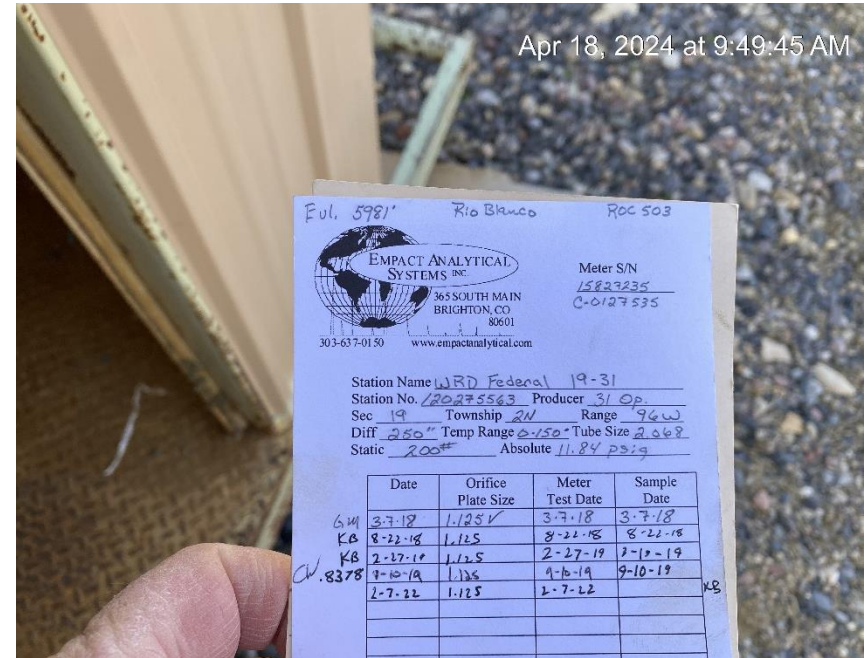


**Sediment migration**

KT Resources LLC  
WRD Federal 19-31  
Location ID: 316279



Unused equipment storage



Gas calibration out of date

**KT Resources LLC  
WRD Federal 19-31  
Location ID: 316279**

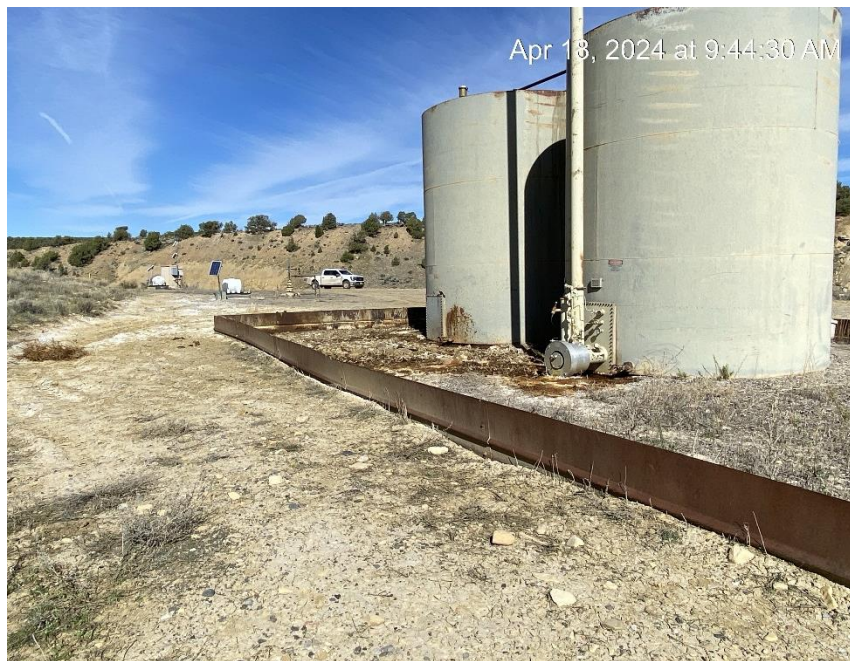


**Location from Northwest corner**



**Location from Northeast corner**

**KT Resources LLC  
WRD Federal 19-31  
Location ID: 316279**



**Location from Southeast corner**



**Location from Southwest corner**