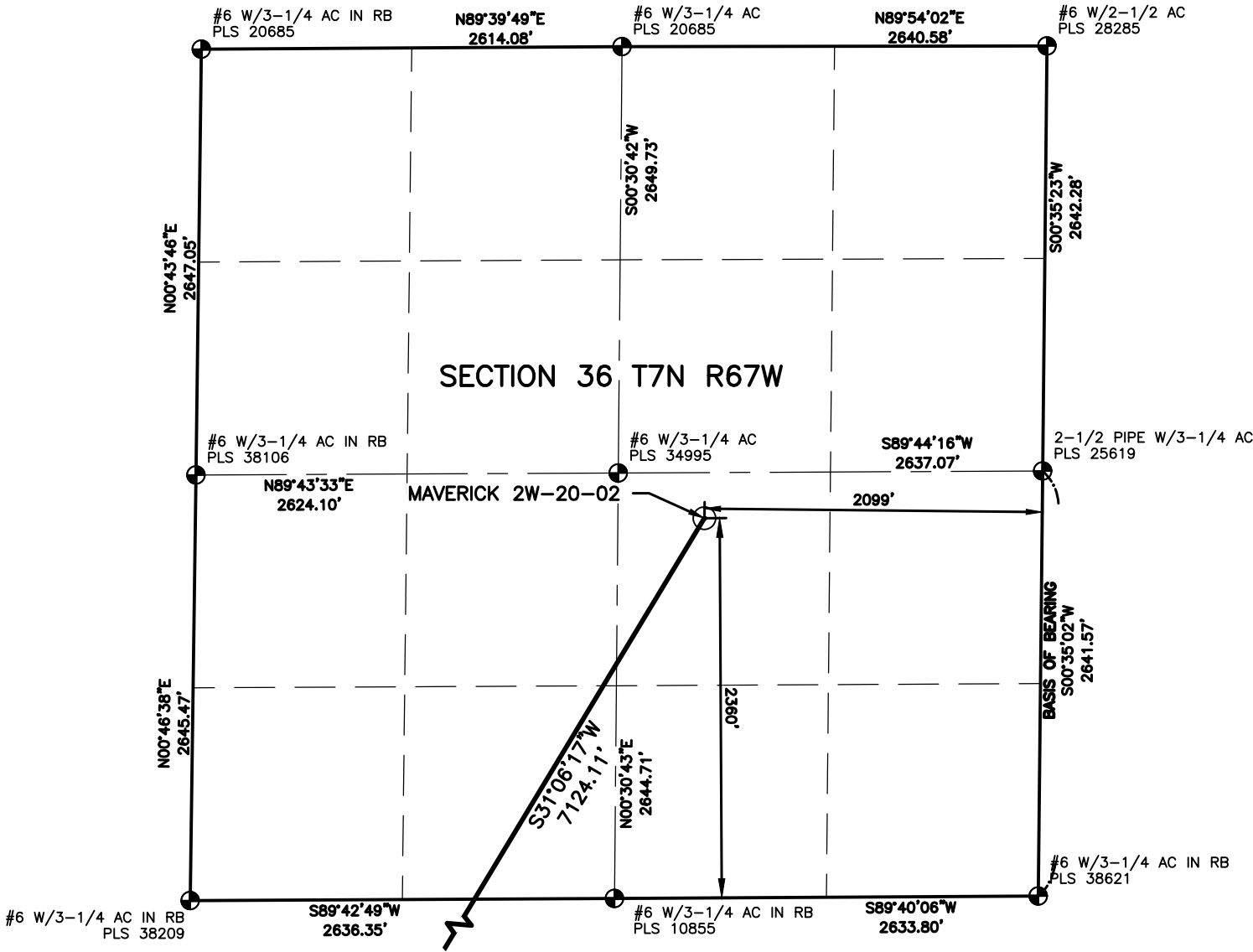
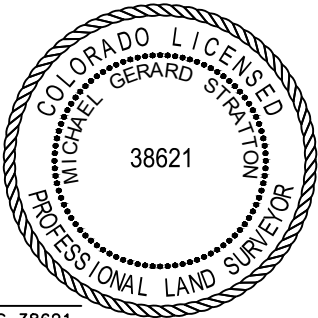


L:\Engineering\0222018 Civitas Ice Man\SURVEY\DRAWINGS\EXHIBITS\WELL PLATS\MAVERICK 2W-20-02N.dwg, 3/26/2024 1:57:35 PM, JOSHUA A. CROAK, LAMP RYNEARSON



LAND SURVEYOR'S CERTIFICATION

LAMP RYNEARSON, INC. OF FT. COLLINS, COLORADO HAS, IN ACCORDANCE WITH A REQUEST FROM TROY OWENS OF EXTRACTION OIL & GAS, DETERMINED THE SURFACE LOCATION OF THE WELL DESIGNATED AS MAVERICK 2W-20-02 TO BE 2360' FROM THE SOUTH LINE AND 2099' FROM THE EAST LINE OF SECTION 36, TOWNSHIP 7 NORTH, RANGE 67 WEST OF THE 6TH P.M., WELD COUNTY, COLORADO.

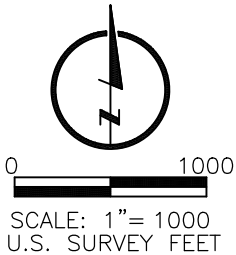


MICHAEL GERARD STRATTON COLORADO PLS 38621  
DATE OF SURVEY: 05/30/2023 (SECTION CONTROL)  
DATE OF SURVEY: 08/10/2022 (WELL LOCATION)

SURFACE POINT				LANDING POINT/BEGIN HORIZONTAL COMPLETION ZONE				BOTTOM HOLE/END HORIZONTAL COMPLETION ZONE			
2360'	FSL	2099'	FEL	1525'	FSL	470'	FEL	1378'	FSL	150'	FEL

SURFACE POINT					LANDING POINT		BOTTOM HOLE	
LATITUDE	LONGITUDE	ELEVATION	PDOP	OPERATOR	LATITUDE	LONGITUDE	LATITUDE	LONGITUDE
40.529910	-104.839693	4897	1.810	A.CAUWELS	40.513151	-104.852883	40.512783	-104.889400

- LEGEND**
- COMPUTED ALIQUOT CORNER
  - ALIQUOT CORNER
  - BOTTOM HOLE
  - ALIQUOT WITNESS CORNER
  - LANDING POINT
  - PROPOSED WELL
  - A.C. ALUMINUM CAP
  - R.B. RANGE BOX
  - CONC. CONCRETE
  - I.C.V.B. IRRIGATION CONTROL VALVE BOX



BASIS OF BEARING:

THE EAST LINE OF THE SOUTHEAST QUARTER OF SECTION 36-T7N-R67W BEARS S00°35'02\"W FOR A DISTANCE OF 2641.57' FEET BETWEEN THE EAST QUARTER CORNER OF SECTION 36 MONUMENTED BY A 2-1/2\" PIPE WITH A 3-1/4\" ALUMINUM CAP STAMPED, \"PLS 25619\", AND AT THE SOUTHEAST CORNER OF SECTION 36, MONUMENTED BY A #6 REBAR WITH A 3-1/4\" ALUMINUM CAP STAMPED, \"PLS 38621\", BASED ON A LOW DISTORTION PROJECTION DEVELOPED BY LAMP RYNEARSON USING THE NORTH AMERICAN DATUM OF 1983(2011).

NOTES:

- DISTANCES ARE MEASURED PERPENDICULAR TO NEAREST SECTION LINE AND ARE SHOWN ON THE SAME SIDE OF THE SECTION LINE WHERE THE WELL IS LOCATED.
- THIS MAP DOES NOT REPRESENT A MONUMENTED BOUNDARY SURVEY. SIXTEENTH CORNER LOCATIONS ARE COMPUTED, UNLESS OTHERWISE NOTED.
- BOTTOM HOLE LOCATIONS AND HORIZONTAL COMPLETION ZONE PROVIDED BY OTHERS.
- ALL REBAR AND CAPS ARE MEASURED IN INCHES.
- ELEVATIONS ARE BASED ON THE NORTH AMERICAN VERTICAL DATUM OF 1988 AS MEASURED BY GNSS OBSERVATIONS USING GEOID 18.

**LAMP RYNEARSON**

LAMP RYNEARSON.COM

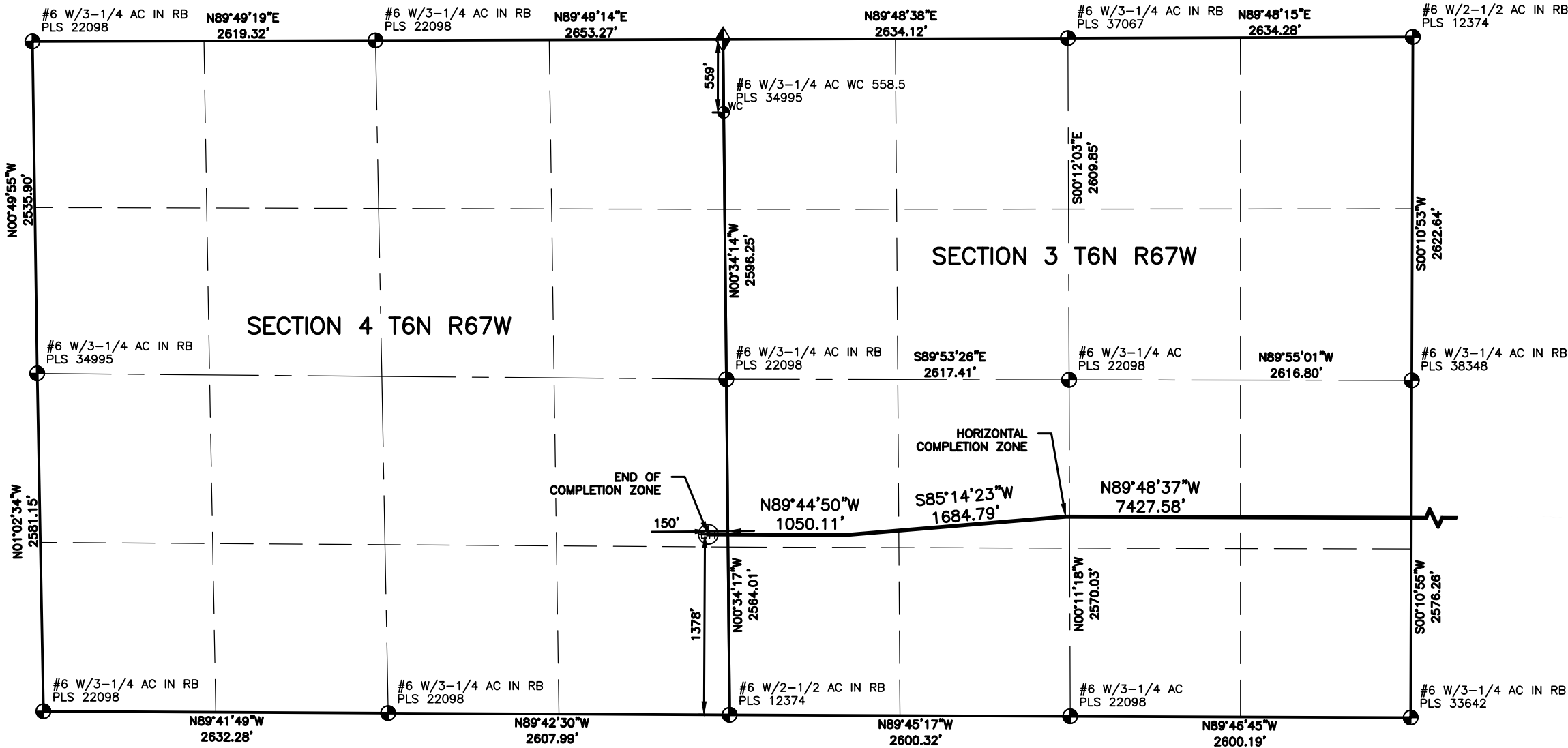


DESIGNER / DRAFTER  
**JOSH CROAK**  
REVIEWER  
**MICHAEL STRATTON**  
PROJECT NUMBER  
**0222018.01**  
DATE  
**03/26/2024**  
SURFACE LOCATION  
**NW/4 SE/4 S36, T7N, R67W**  
BOOK AND PAGE

**WELL LOCATION PLAT**  
**EXTRACTION OIL & GAS**  
**MAVERICK 2W-20-02**

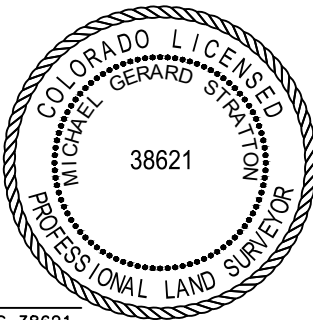


L:\Engineering\0222018 Civitas Ice Man\SURVEY\DRAWINGS\EXHIBITS\WELL PLATS\MAVERICK 2W-20-02N.dwg, 3/26/2024 1:57:41 PM, JOSHUA A. CROAK, LAMP RYNEARSON



#### LAND SURVEYOR'S CERTIFICATION

LAMP RYNEARSON, INC. OF FT. COLLINS, COLORADO HAS, IN ACCORDANCE WITH A REQUEST FROM TROY OWENS OF EXTRACTION OIL & GAS, DETERMINED THE SURFACE LOCATION OF THE WELL DESIGNATED AS MAVERICK 2W-20-02 TO BE 2360' FROM THE SOUTH LINE AND 2099' FROM THE EAST LINE OF SECTION 36, TOWNSHIP 7 NORTH, RANGE 67 WEST OF THE 6TH P.M., WELD COUNTY, COLORADO.



MICHAEL GERARD STRATTON COLORADO PLS 38621  
DATE OF SURVEY: 05/30/2023 (SECTION CONTROL)  
DATE OF SURVEY: 08/10/2022 (WELL LOCATION)

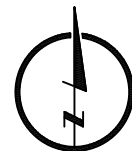
SURFACE POINT				LANDING POINT/BEGIN HORIZONTAL COMPLETION ZONE				BOTTOM HOLE/END HORIZONTAL COMPLETION ZONE			
2360'	FSL	2099'	FEL	1525'	FSL	470'	FEL	1378'	FSL	150'	FEL

SURFACE POINT					LANDING POINT		BOTTOM HOLE		
LATITUDE	LONGITUDE	ELEVATION	PDOP	OPERATOR	LATITUDE	LONGITUDE	LATITUDE	LONGITUDE	
40.529910	-104.839693	4897	1.810	A.CAUWELS	40.513151	-104.852883	40.512783	-104.889400	

LEGEND			
COMPUTED ALIQUOT CORNER	PROPOSED WELL	A.C.	ALUMINUM CAP
ALIQUOT CORNER	R.B.	RANGE BOX	
BOTTOM HOLE	CONC.	CONCRETE	
ALIQUOT WITNESS CORNER	I.C.V.B.	IRRIGATION CONTROL VALVE BOX	
LANDING POINT			

#### BASIS OF BEARING:

THE EAST LINE OF THE SOUTHEAST QUARTER OF SECTION 36-T7N-R67W BEARS S00°35'02"W FOR A DISTANCE OF 2641.57' FEET BETWEEN THE EAST QUARTER CORNER OF SECTION 36 MONUMENTED BY A 2-1/2" PIPE WITH A 3-1/4" ALUMINUM CAP STAMPED, "PLS 25619", AND AT THE SOUTHEAST CORNER OF SECTION 36, MONUMENTED BY A #6 REBAR WITH A 3-1/4" ALUMINUM CAP STAMPED, "PLS 38621", BASED ON A LOW DISTORTION PROJECTION DEVELOPED BY LAMP RYNEARSON USING THE NORTH AMERICAN DATUM OF 1983(2011).



0 1000  
SCALE: 1" = 1000  
U.S. SURVEY FEET

#### NOTES:

- DISTANCES ARE MEASURED PERPENDICULAR TO NEAREST SECTION LINE AND ARE SHOWN ON THE SAME SIDE OF THE SECTION LINE WHERE THE WELL IS LOCATED.
- THIS MAP DOES NOT REPRESENT A MONUMENTED BOUNDARY SURVEY. SIXTEENTH CORNER LOCATIONS ARE COMPUTED, UNLESS OTHERWISE NOTED.
- BOTTOM HOLE LOCATIONS AND HORIZONTAL COMPLETION ZONE PROVIDED BY OTHERS.
- ALL REBAR AND CAPS ARE MEASURED IN INCHES.
- ELEVATIONS ARE BASED ON THE NORTH AMERICAN VERTICAL DATUM OF 1988 AS MEASURED BY GNSS OBSERVATIONS USING GEOID 18.

**LAMP RYNEARSON**

LAMP RYNEARSON.COM



DESIGNER / DRAFTER  
**JOSH CROAK**  
REVIEWER  
**MICHAEL STRATTON**  
PROJECT NUMBER  
**0222018.01**  
DATE  
**03/26/2024**  
SURFACE LOCATION  
**NW/4 SE/4 S36, T7N, R67W**  
BOOK AND PAGE

# WELL LOCATION PLAT

## EXTRACTION OIL & GAS

### MAVERICK 2W-20-02