



1:240

RWD

MD Log

Wave Propagation Resistivity

Country : UNITED STATES
Field : WATTENBERG
Location : 40.348200
Well : STATE SEVENTY HOLES Y-E-1
Company : CIVITAS/BONANZA CREEK ENERGY
Rig : Patterson 345

Company : CIVITAS/BONANZA CREEK ENERGY
Rig : Patterson 345
Well : STATE SEVENTY HOLES Y-E-10HNXRL
Field : WATTENBERG
County/Parish : WELD
State/Province : COLORADO
Country : UNITED STATES
Well ID : 05-123-52193

LOCATION
Latitude : 40.348200
Longitude : -104.310940
WELD, COUNTY
Sect: 3 Twp: 4N Range: 62W
Other Services:

Permanent Datum : MSL Elevation: 4574
Log Measured From: Drill Floor
Elev. KB :
DF : 25
GL/WD : 4549

Depth Logged : 1702 to : 7690
Date Logged : 2/9/2024 to : 2/10/2024
Total Depth MD : 18714.00 TVD : 6240.1
Spud Date : 2/6/2024
Job Number:
AEP-RM-240177

FINAL PRINT

Run		Borehole Record (MD) Size From To		Run		Borehole Record (MD) Size From To	
2	3	8.5	1702 13038	13038	18714	9.625	0 1702

DISCLAIMER

Altitude Energy Partners. does not guarantee the accuracy or correctness of interpretations in or from this log.
Since all interpretations are opinions based on measurements Altitude Energy Partners shall under no circumstance be responsible for consequential damages or and other loss, cost or expense incurred or sustained in connection with the use of such interpretations.

LOGGING SUMMARY

Log Run	1	2			
Bit Run	2	3			
Hole Size (in)	8.50	8.50			
Sensor Suite	WPR	WPR			

Measured Depth

In Hole From	11239	13038			
In Hole To	13038	18714			
Log From	1702.00	2011.00			
Log To	2011.00	7690.00			

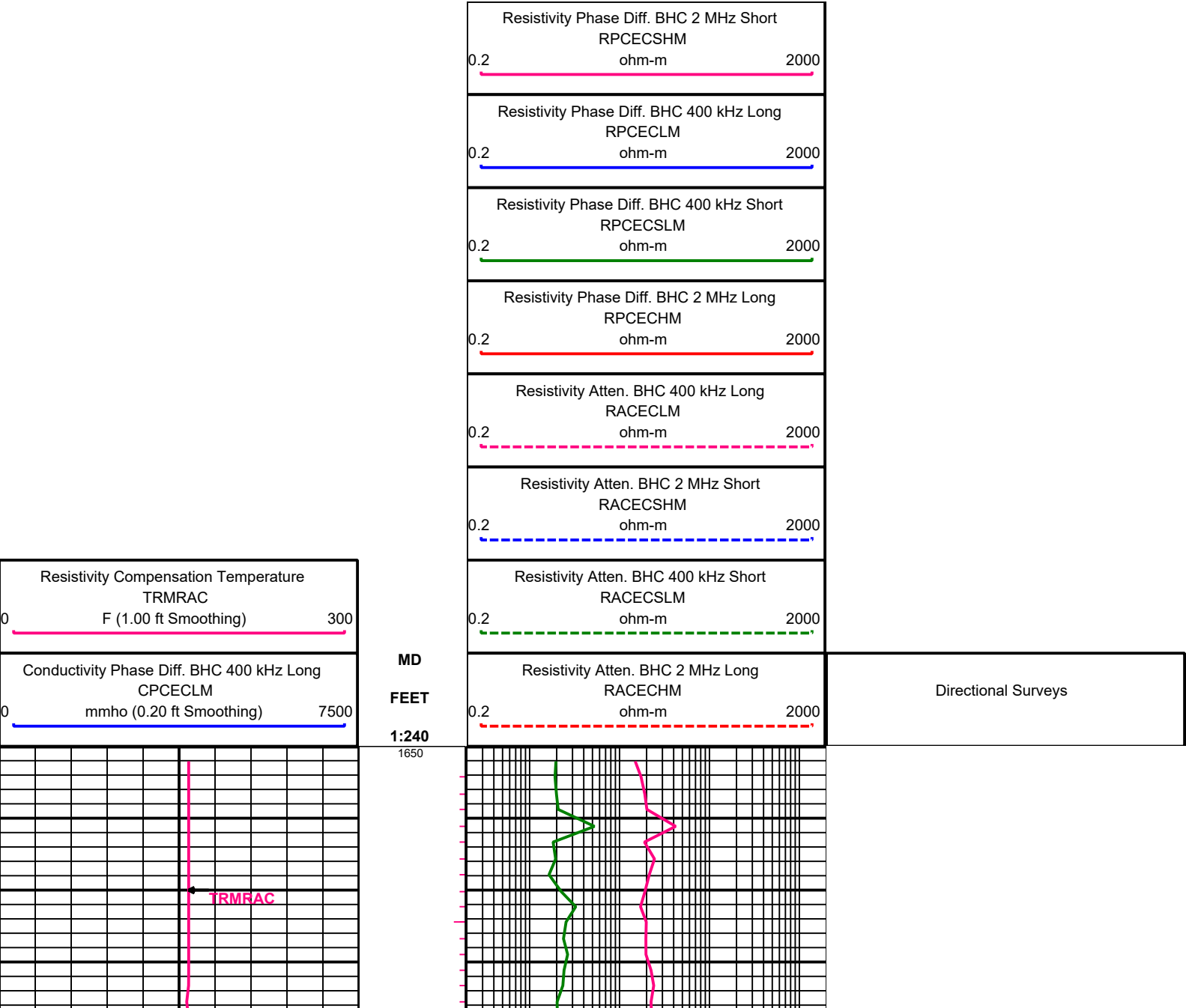
Date/Time

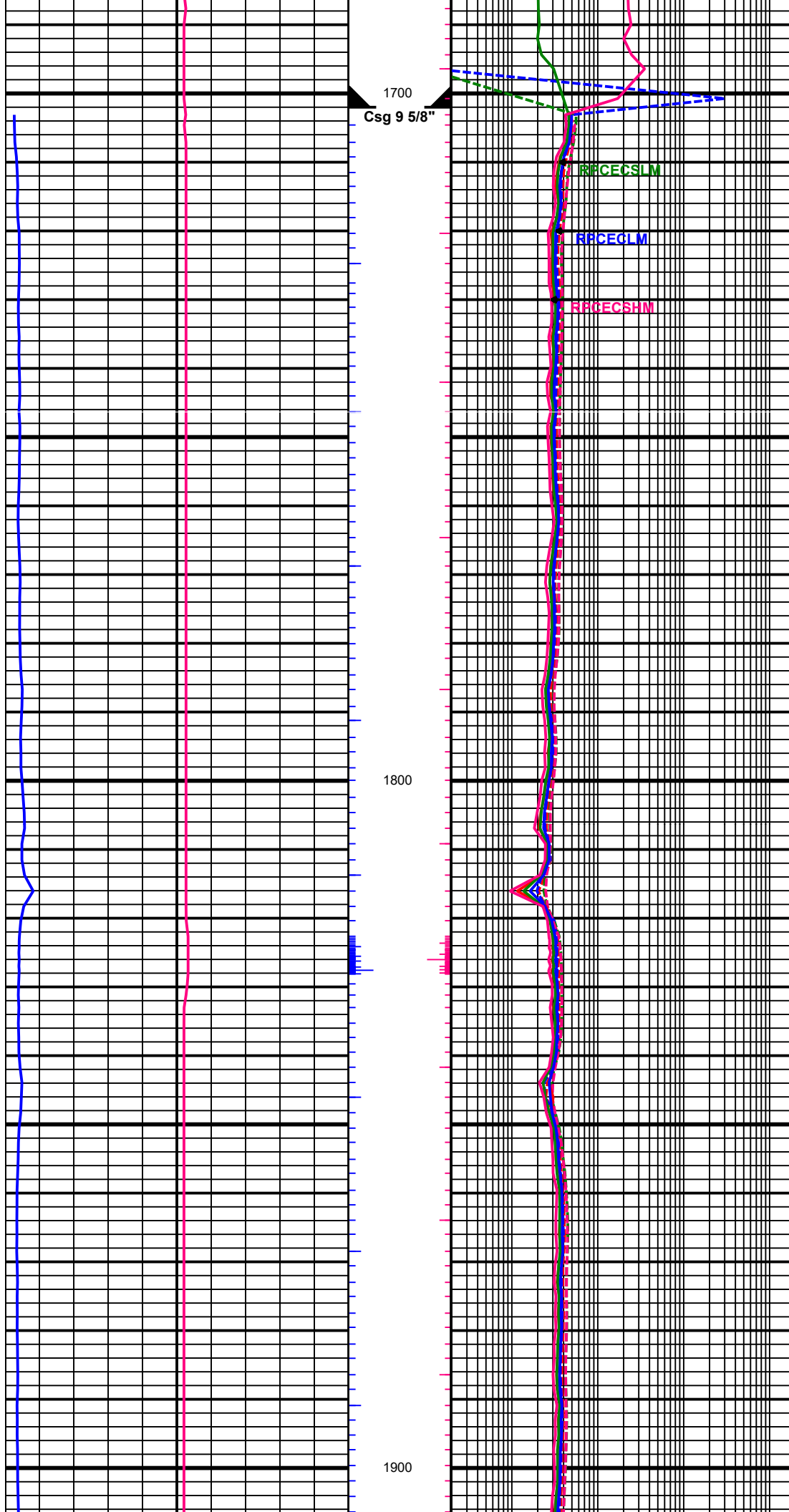
In Hole Date	2024-02-08	2024-02-09			
In Hole Time	22:00:41	16:12:05			
Out Hole Date	2024-02-09	2024-02-10			
Out Hole Time	06:57:31	19:19:46			
Begin Log Date	2024-02-09	2024-02-09			
Begin Log Time	03:40:00	17:13:40			
End Log Date	2024-02-09	2024-02-10			
End Log Time	05:14:00	14:24:15			

LWD Engineer	Jacy Kellerman				
Oil Company Rep	Frank	Josh			
DRILLING FLUID SUMMARY					
Mud Type	OBM	OBM			
Density (lb/gal)	8.90	9.00			
Funnel Viscosity	43	44			
Plastic Viscosity	10	10			
Chlorides	44000	43000			
Oil/Water Ratio	76.4 / 23.6	77.3 / 22.7			
Maximum Circ Temp (F)	130	135			
CORRECTIONS					
Log Run	1	2			
Bit Run	2	3			
Start Date/Time	2024-02-08 22:00:41	2024-02-09 16:12:05			
Start Depth (ft)	0	13038			
End Date/Time	2024-02-09 06:57:01	2024-02-10 19:19:46			
End Depth (ft)	13038	18714			
Gamma Ray Corrections					
Collar Correction	3.365	3.365			
Mud Density (lb/gal)	12	12			
Mud Correction	1	1			
Calibration	1.35	1.35			
%K	0	0			
WPR Corrections					
Effective Hole Diam (in)	8	8.5			
Surface Rm (ohm-m)	1000	1000			
Surface Mud Temp (F)	116	123			
Bottom Hole Circ Temp (F)	158	199.4			
Rm @ BHT	744.991	629.306			
EQUIPMENT					
Log Run	1	2			
Bit Run	2	3			
Start Date/Time	2024-02-08 22:00:41	2024-02-09 16:12:05			
Start Depth (ft)	11239	13038			
End Date/Time	2024-02-09 06:57:31	2024-02-10 19:19:46			
End Depth (ft)	13038	18714			
Serial Numbers					
Surface Gear					
Flow Sub					
Pulser					

Battery 1					
Battery 2					
Turbine Alternator					
Directional Sensor					
Gamma Sensor					
WPR Sensor	18	18			
Vibration Sensor					

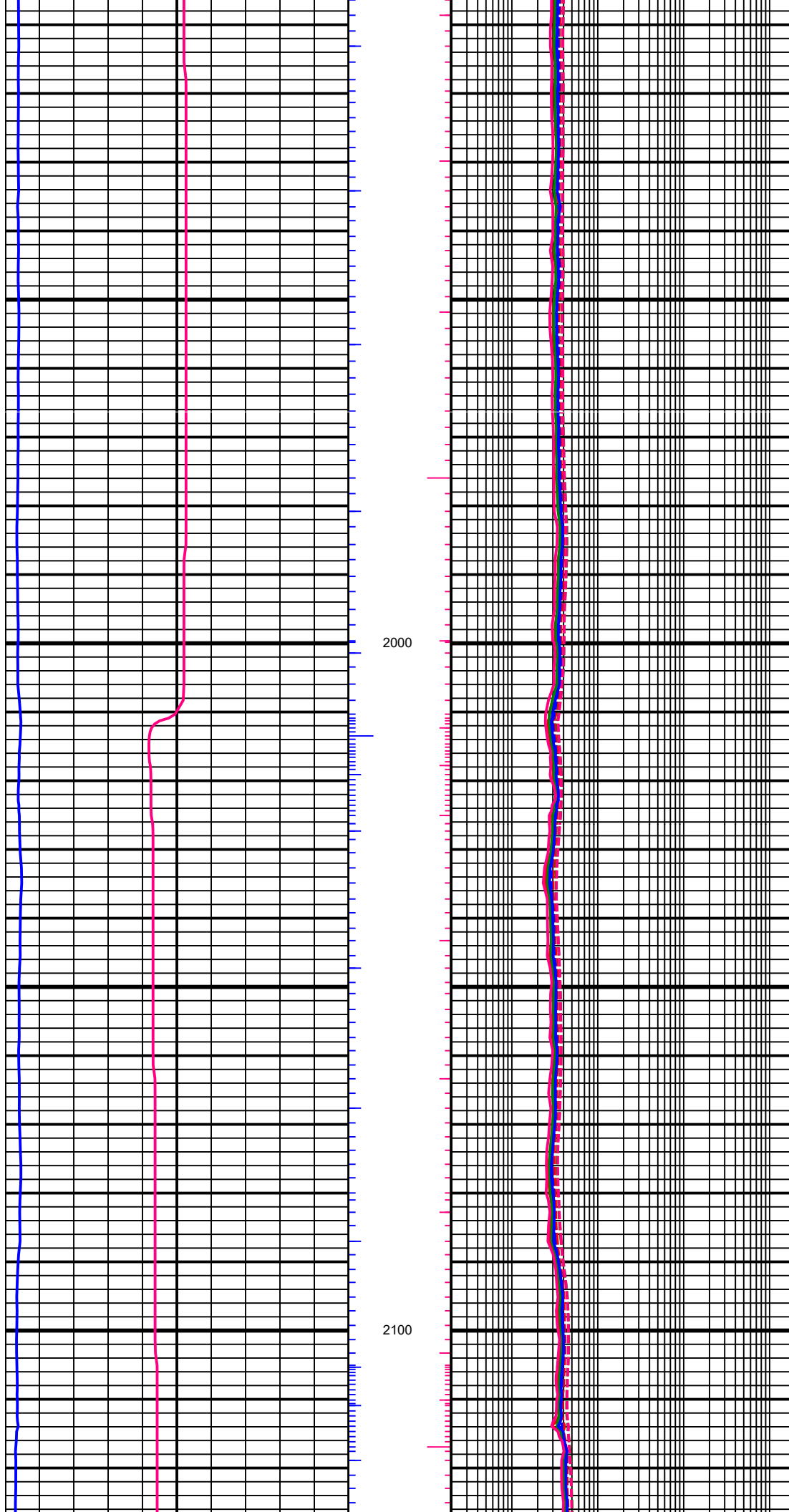
Sensor Offsets To Bit					
Directional (ft)					
Gamma Ray (ft)					
WPR (ft)	11026.76	11023.89			
PWD (ft)					
Vibration (ft)					





1761.00 MD, 1640.64 TVD
36.32 INC, 152.01 AZC

1856.00 MD, 1714.92 TVD
40.79 INC, 152.32 AZC



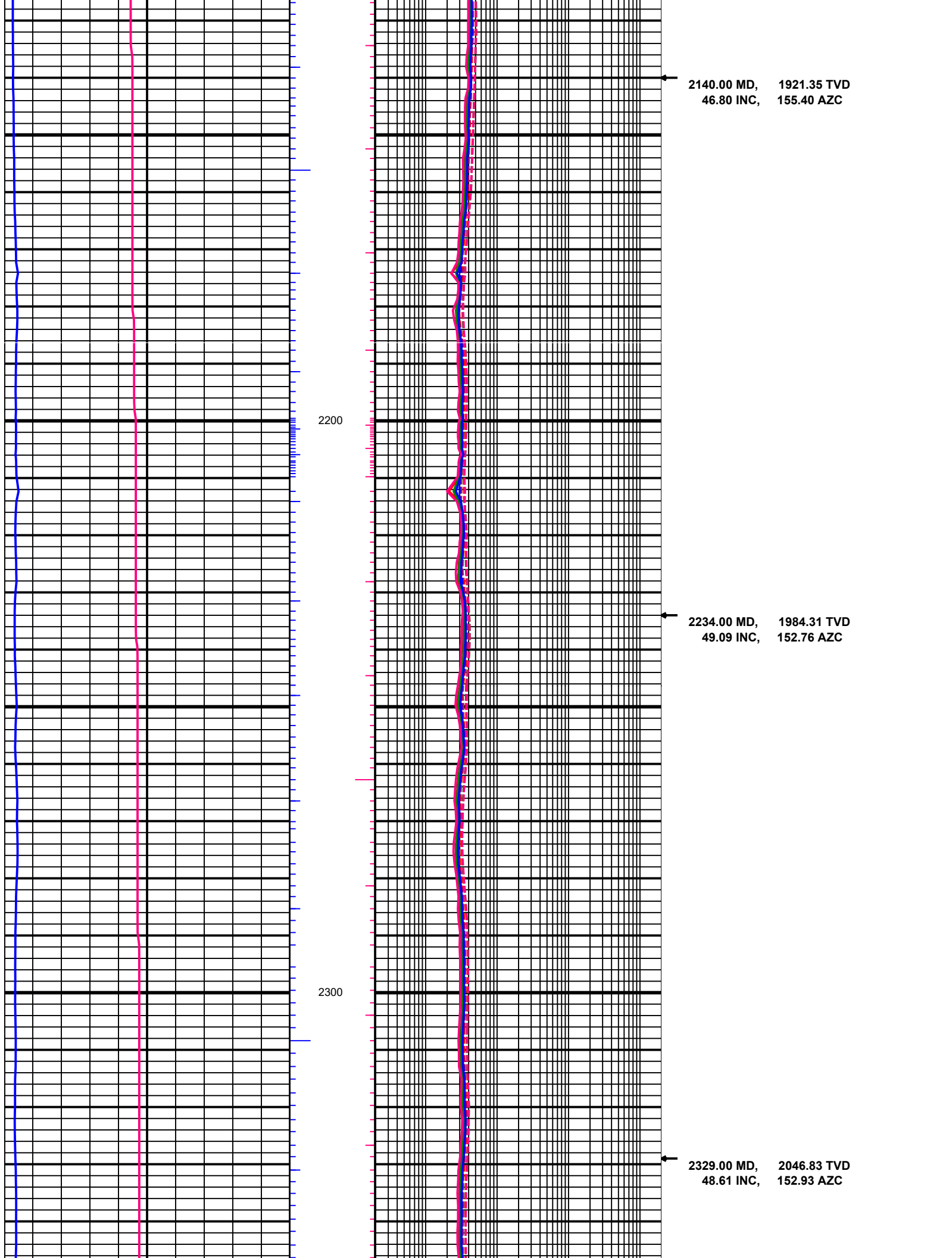
1951.00 MD, 1785.90 TVD
42.51 INC, 153.42 AZC

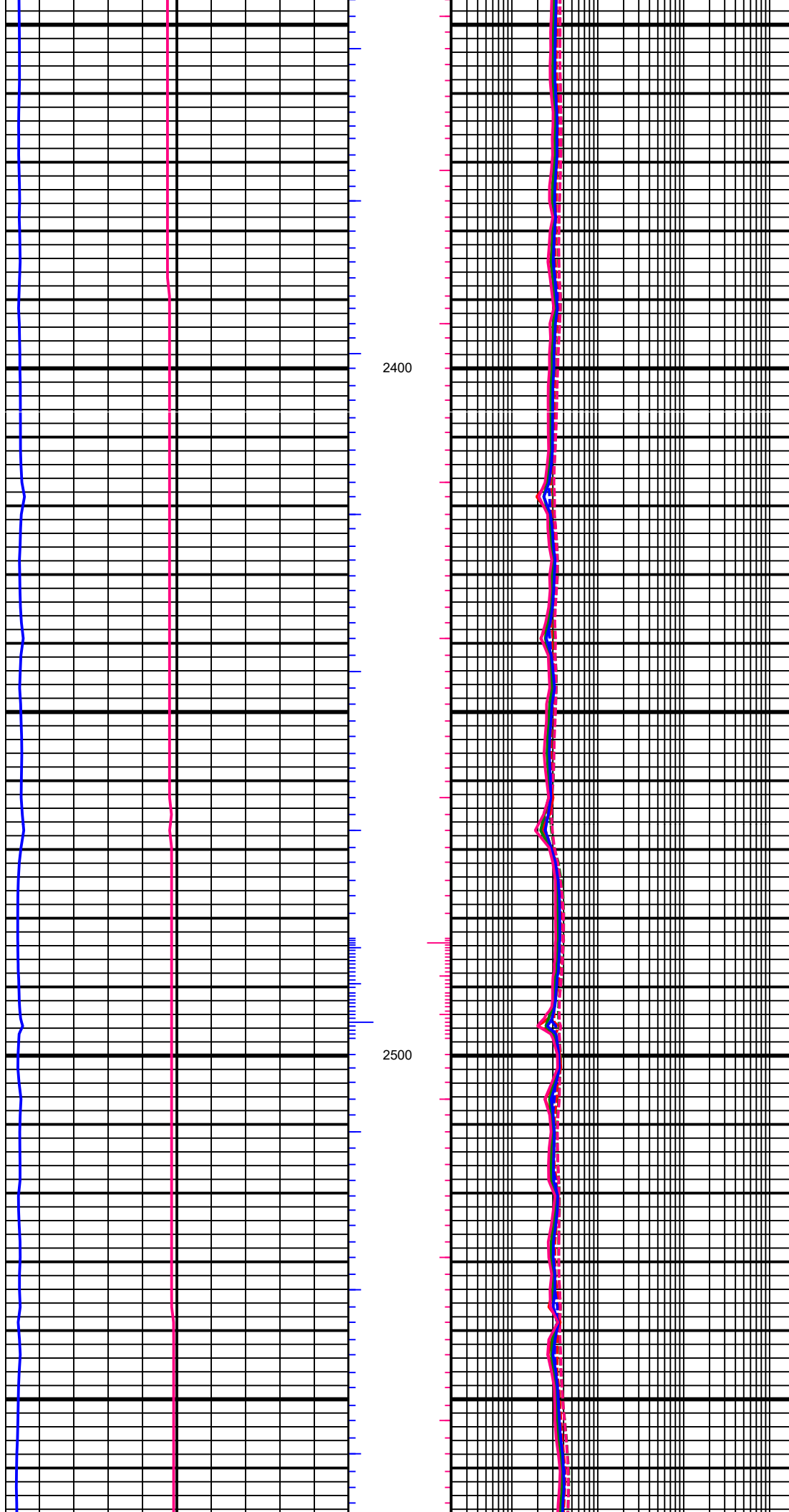


2045.00 MD, 1854.50 TVD
43.75 INC, 154.48 AZC

2000

2100





2400

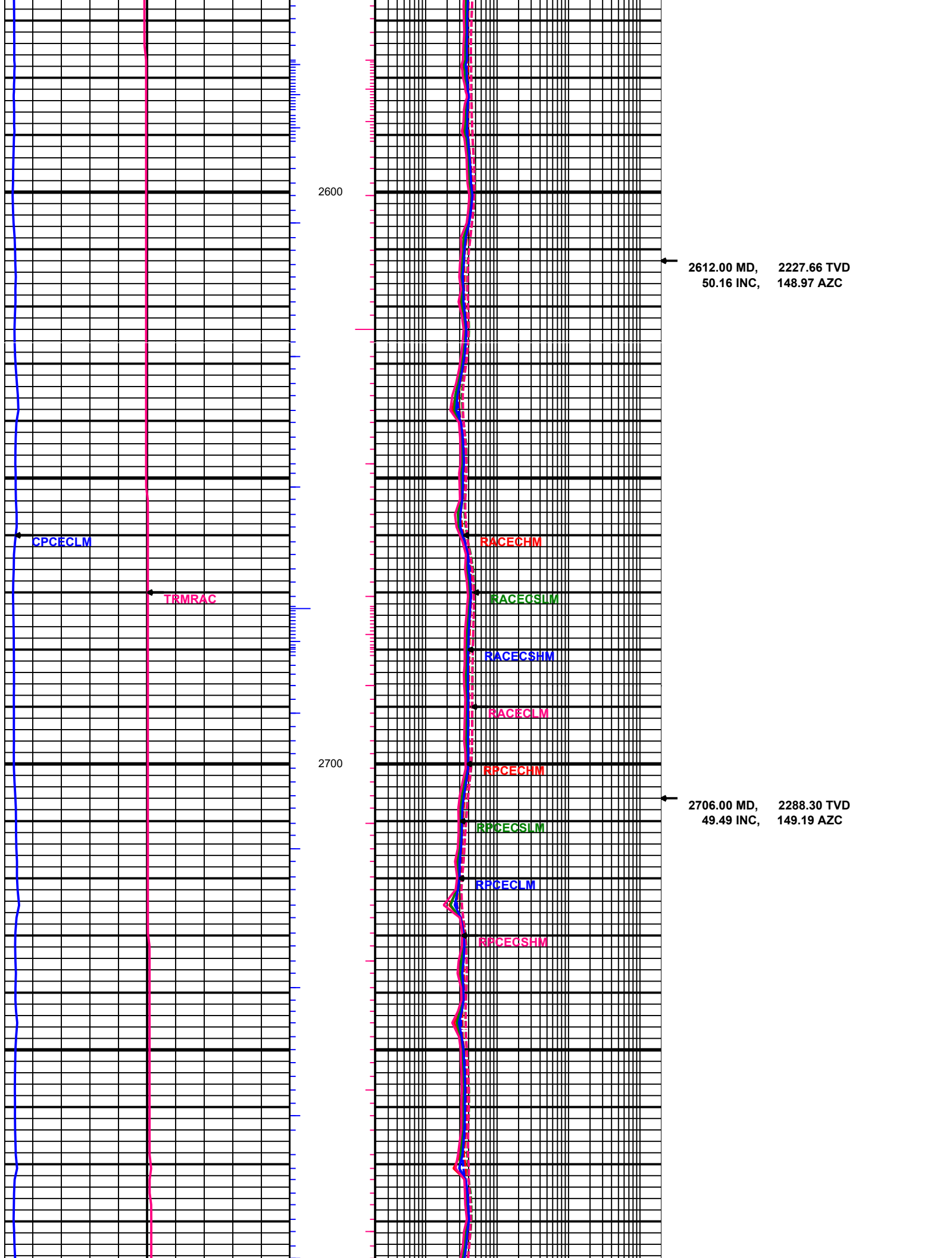
2500

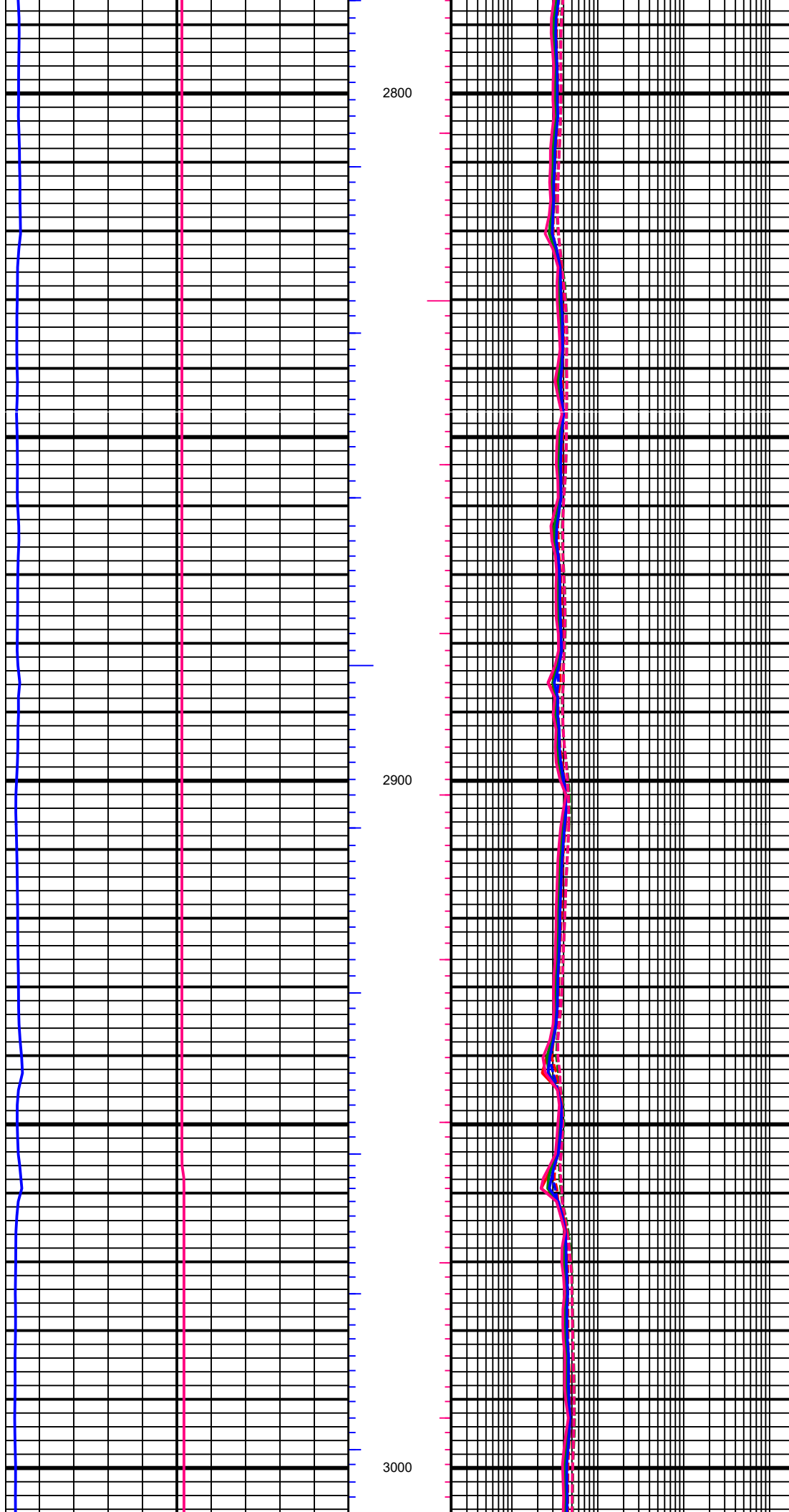


2423.00 MD, 2107.64 TVD
50.77 INC, 149.45 AZC



2518.00 MD, 2167.78 TVD
50.69 INC, 149.50 AZC





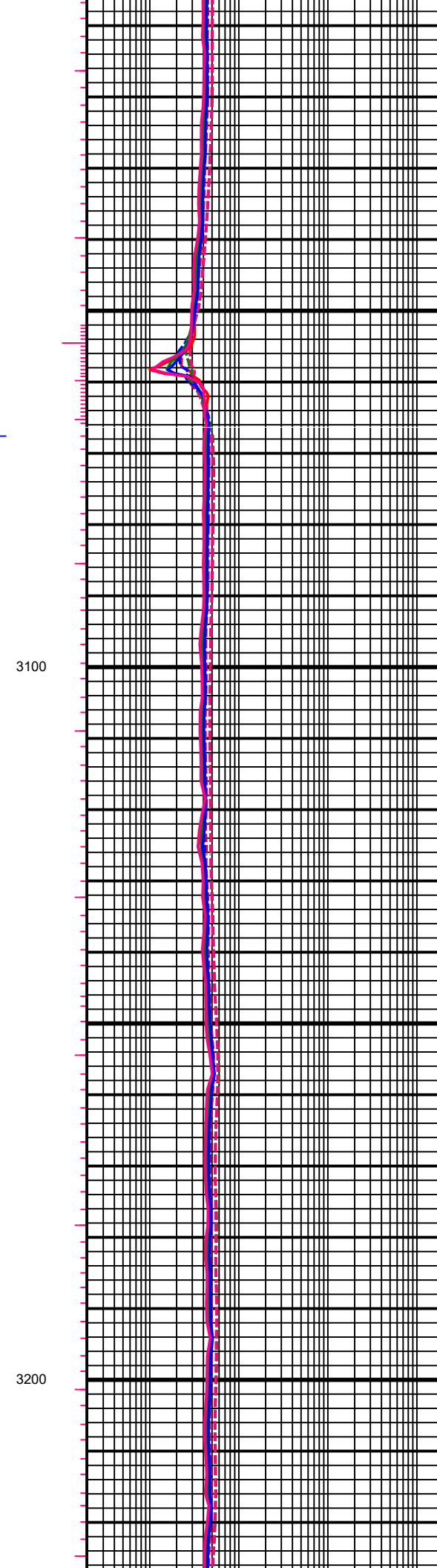
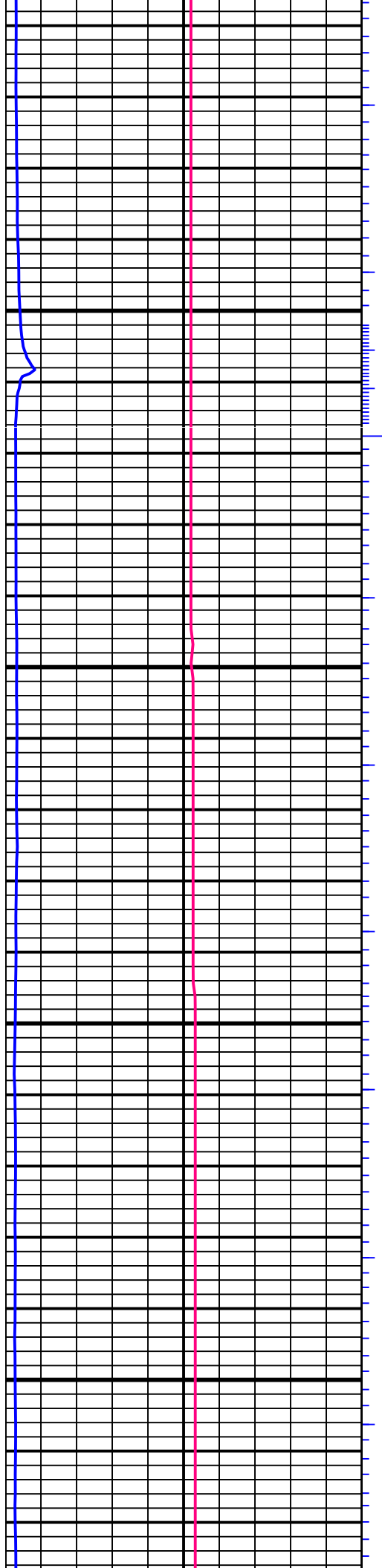
2800

2900

3000

2826.00 MD, 2364.69 TVD
51.44 INC, 149.23 AZC

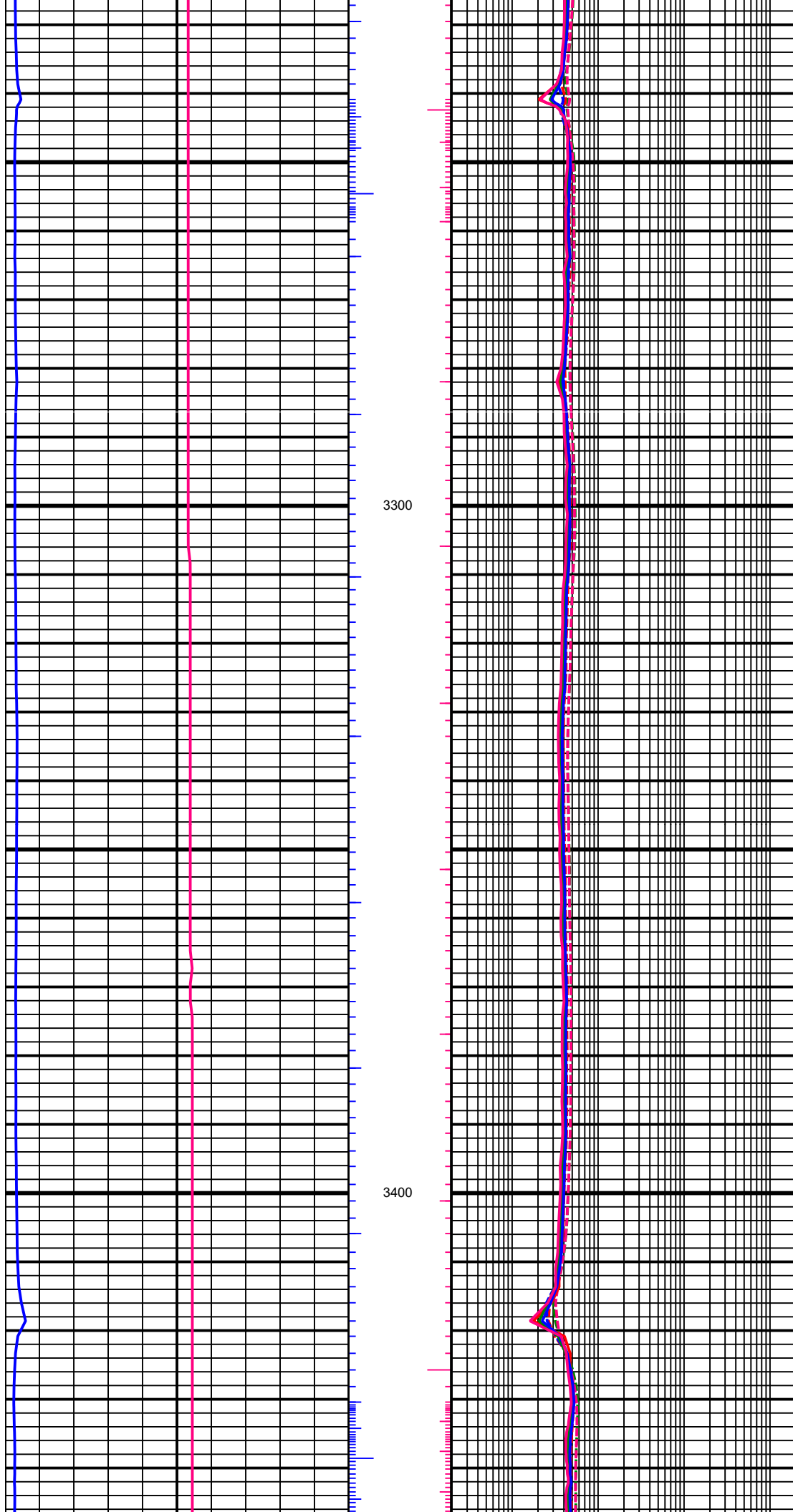
2921.00 MD, 2424.42 TVD
50.64 INC, 149.19 AZC



3015.00 MD, 2484.43 TVD
50.02 INC, 149.06 AZC

3110.00 MD, 2545.77 TVD
49.54 INC, 149.10 AZC

3205.00 MD, 2605.70 TVD
52.23 INC, 150.55 AZC

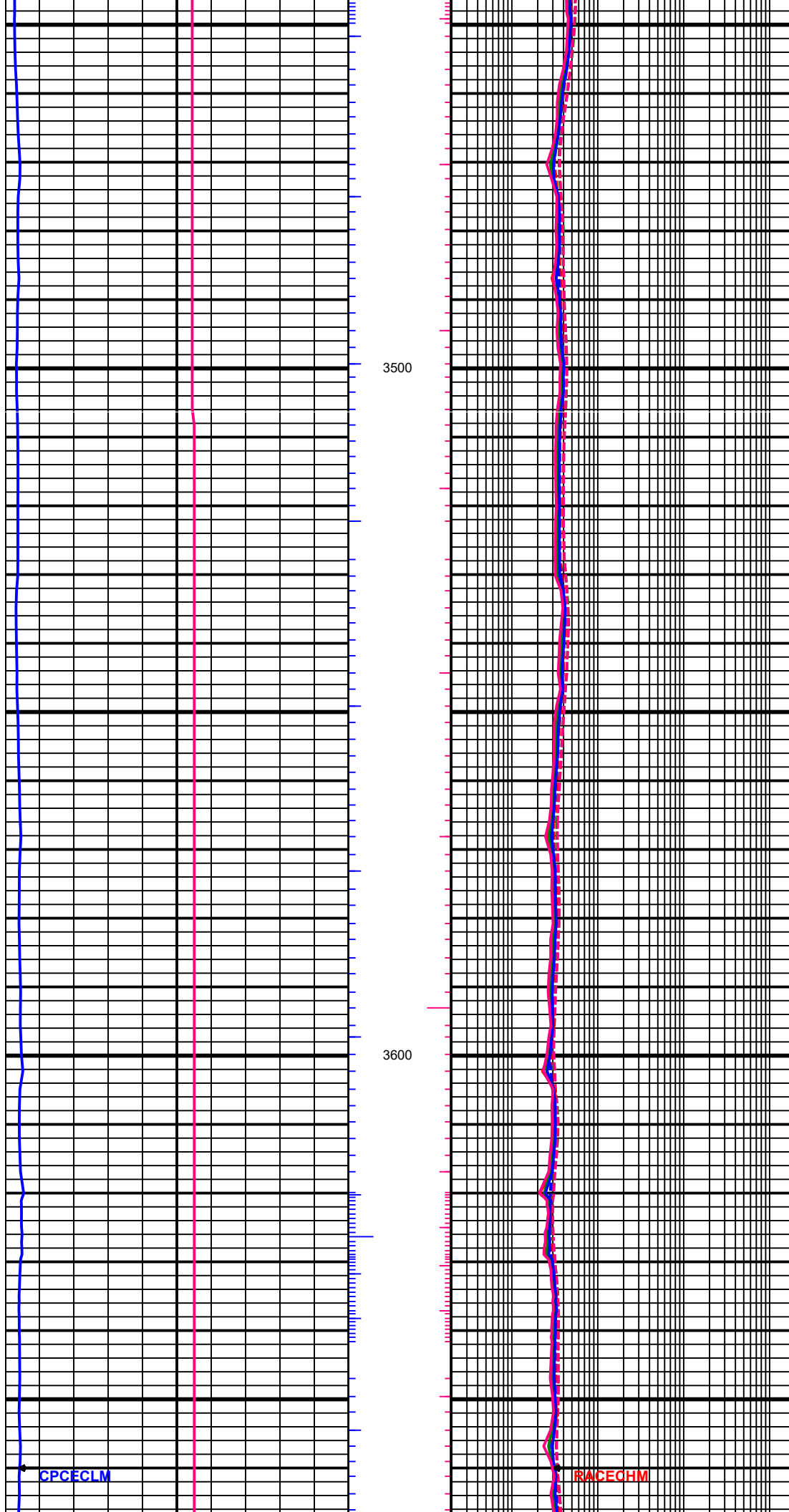


3300

3400



3395.00 MD, 2723.17 TVD
51.39 INC, 150.47 AZC



3489.00 MD, 2782.39 TVD
50.51 INC, 150.42 AZC

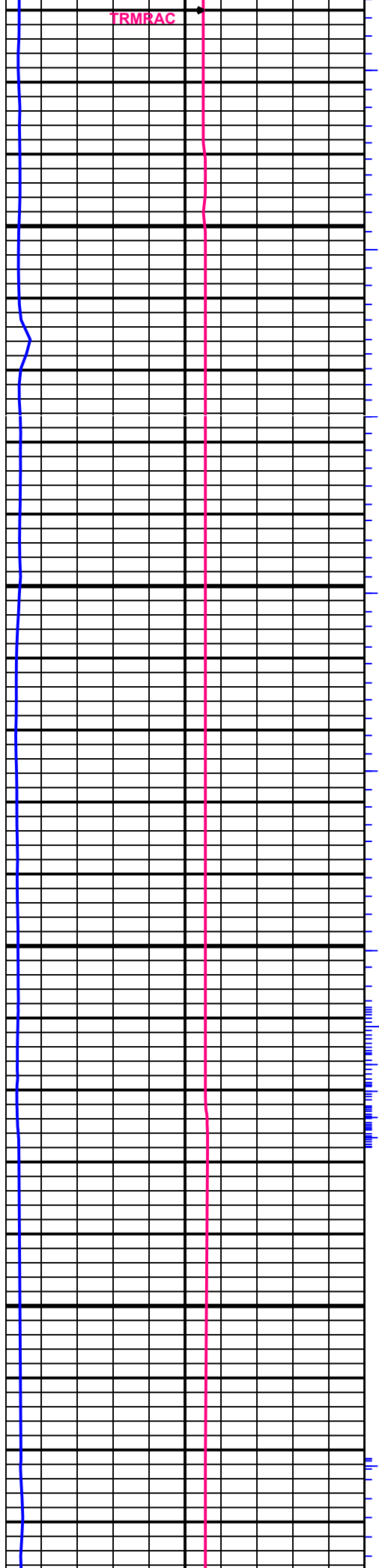
3584.00 MD, 2843.31 TVD
49.71 INC, 150.38 AZC

3500

3600

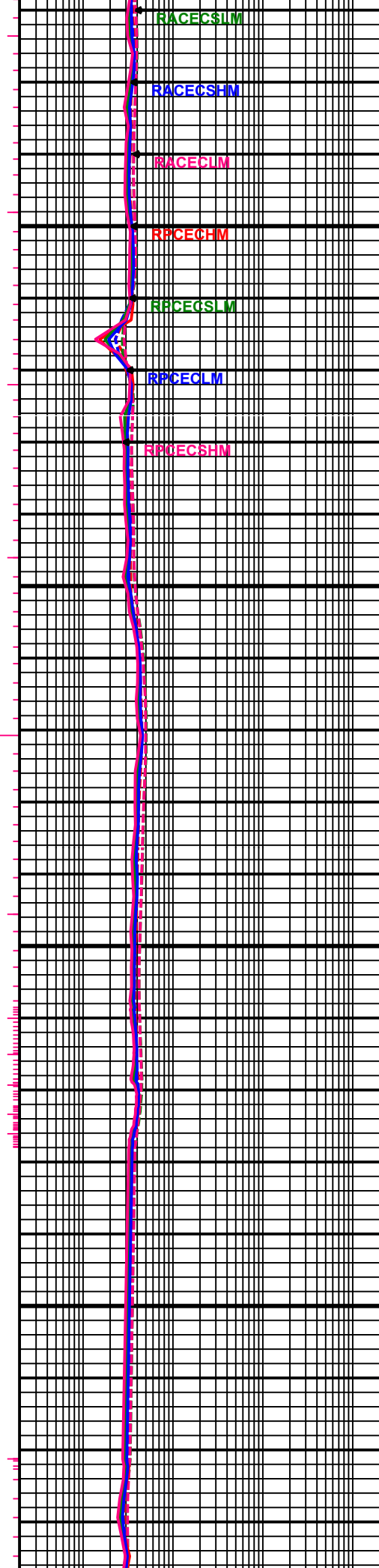
CPCECLM

RACECHM



3700

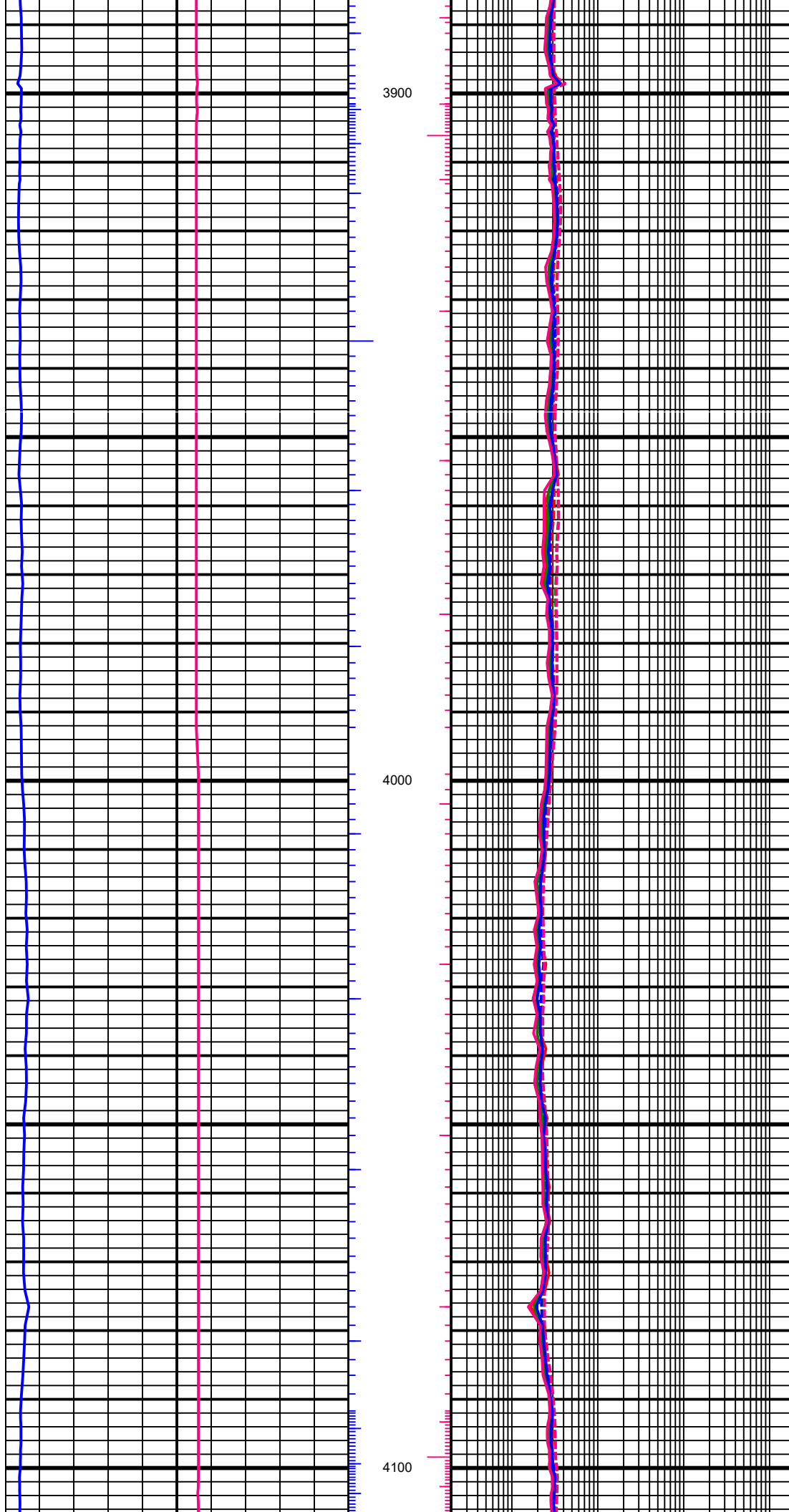
3800



3678.00 MD, 2904.84 TVD
48.52 INC, 150.07 AZC

3773.00 MD, 2966.80 TVD
50.07 INC, 148.35 AZC

3868.00 MD, 3028.20 TVD
49.40 INC, 147.87 AZC



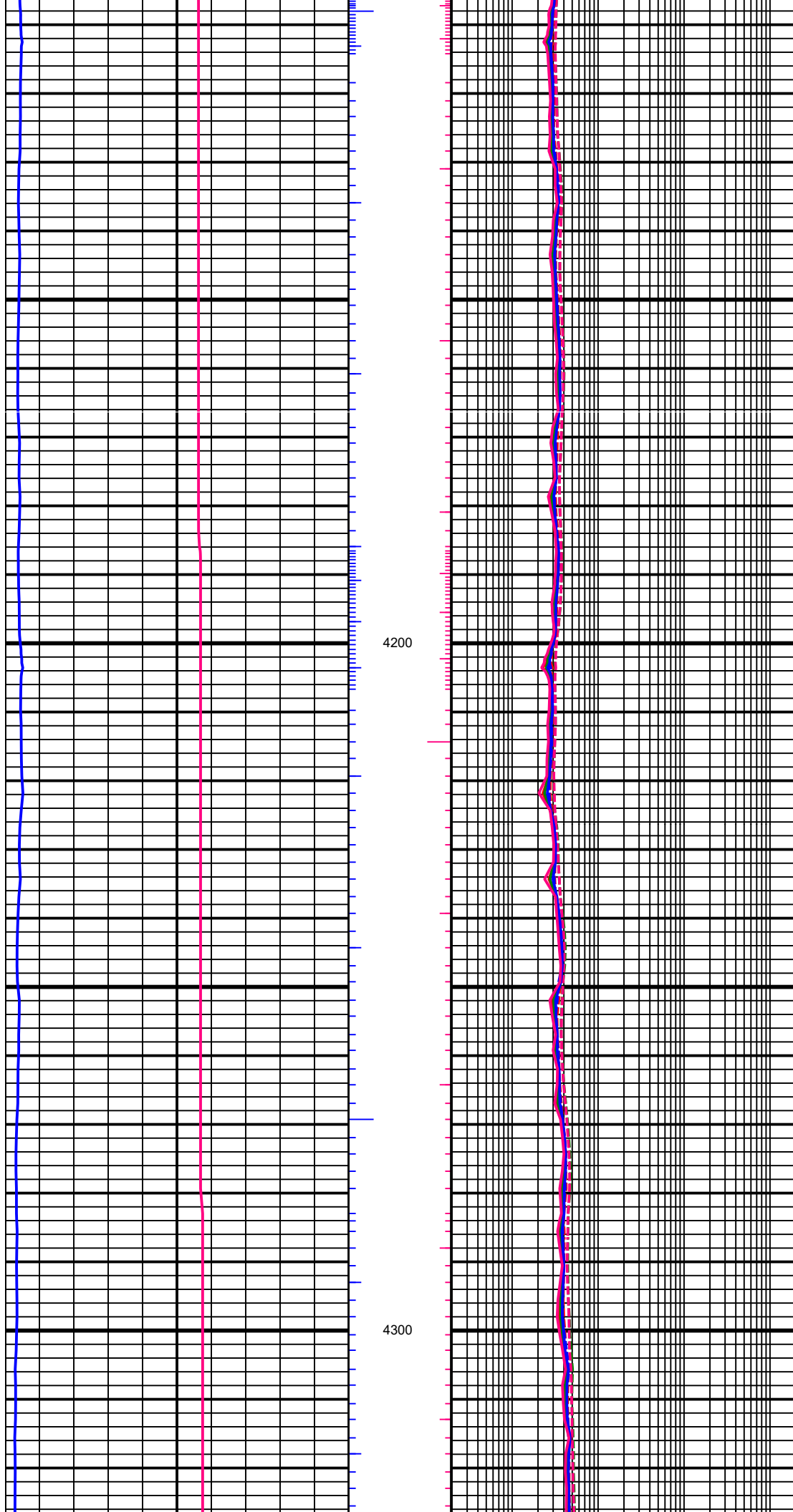
3900

4000

4100

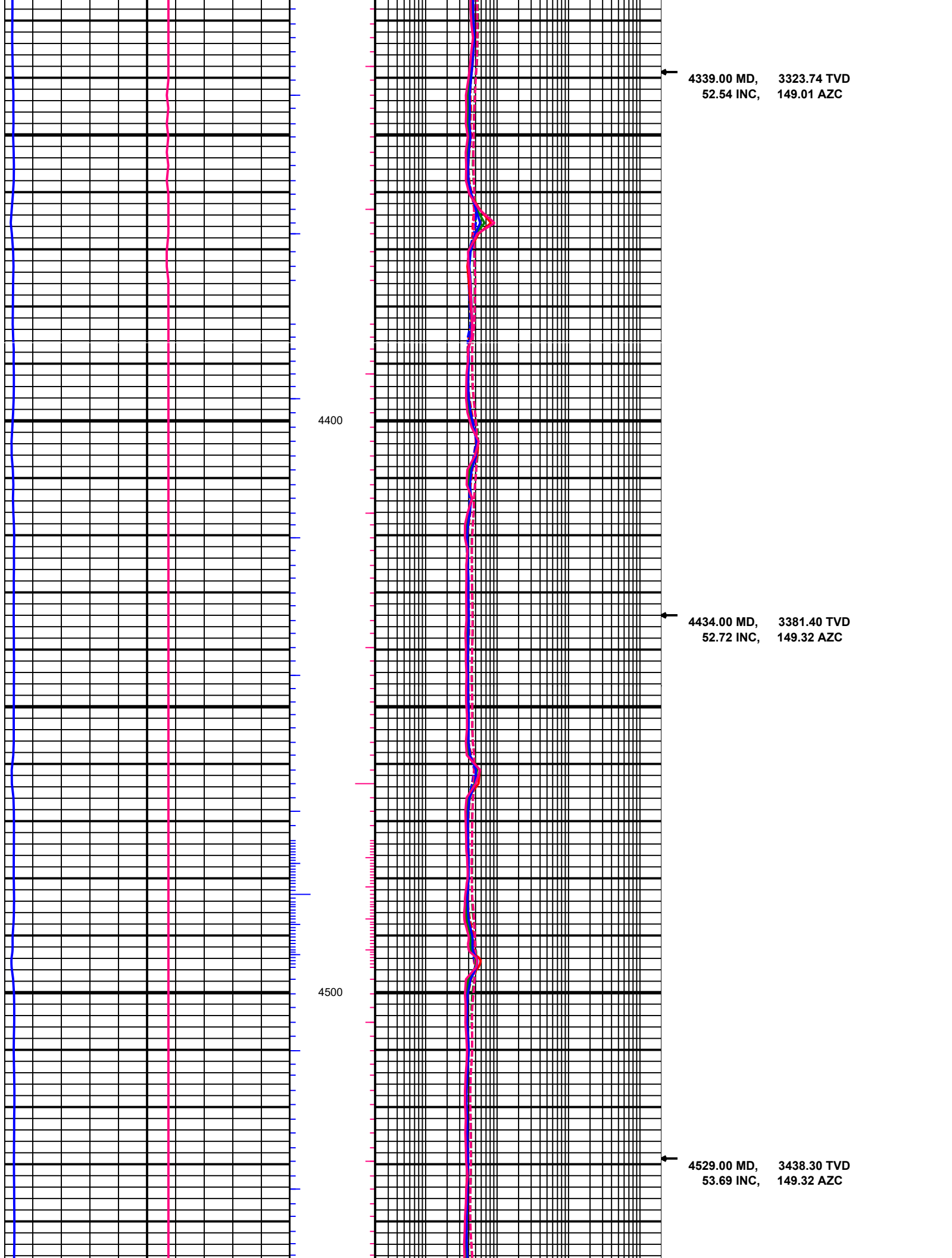
3962.00 MD, 3089.09 TVD
49.85 INC, 147.56 AZC

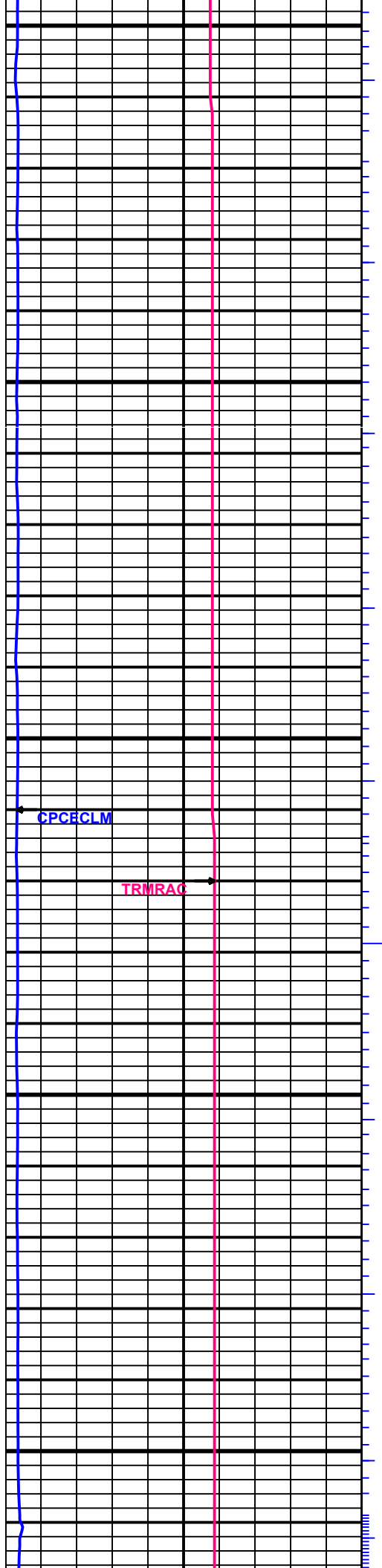
4057.00 MD, 3149.13 TVD
51.75 INC, 149.14 AZC



4152.00 MD, 3208.72 TVD
50.55 INC, 149.50 AZC

4246.00 MD, 3267.18 TVD
52.54 INC, 149.06 AZC



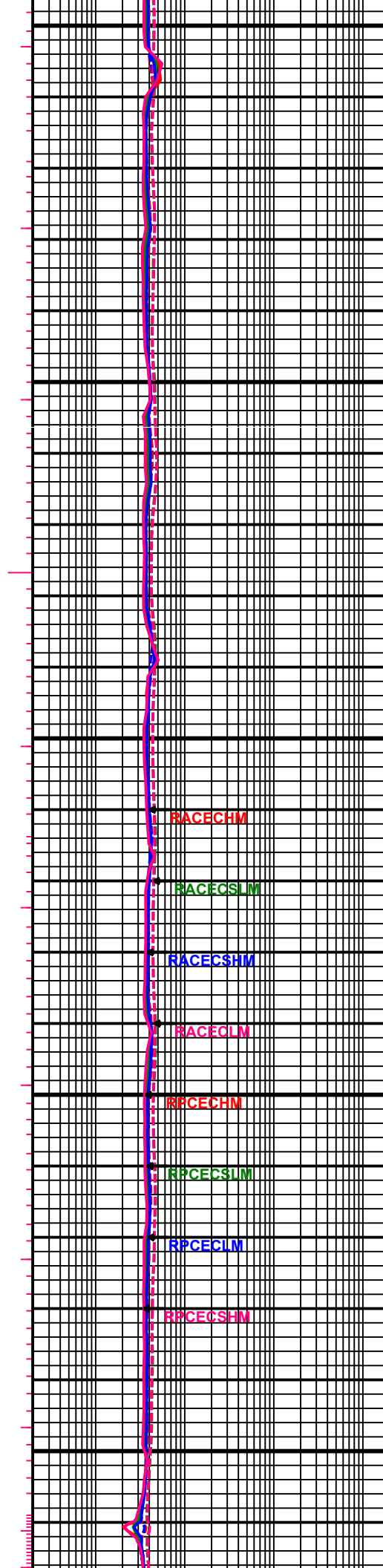


4600

4700

CPECLM

TRMRAG



RACECHM

RACECLM

RACECHM

RACECLM

RACECHM

RACECLM

RACECHM

RACECLM

RACECHM

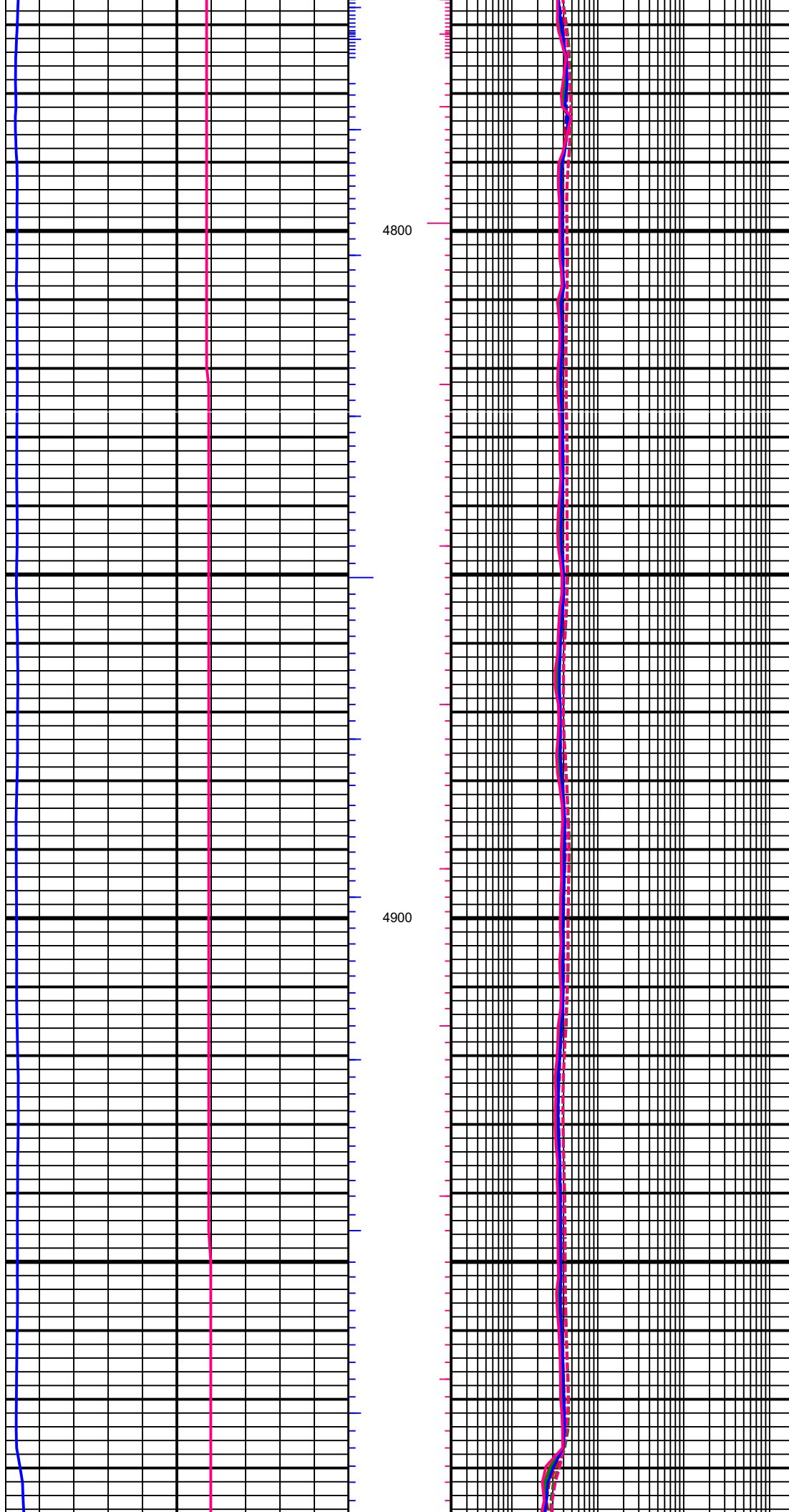
RACECLM

RACECHM

RACECLM

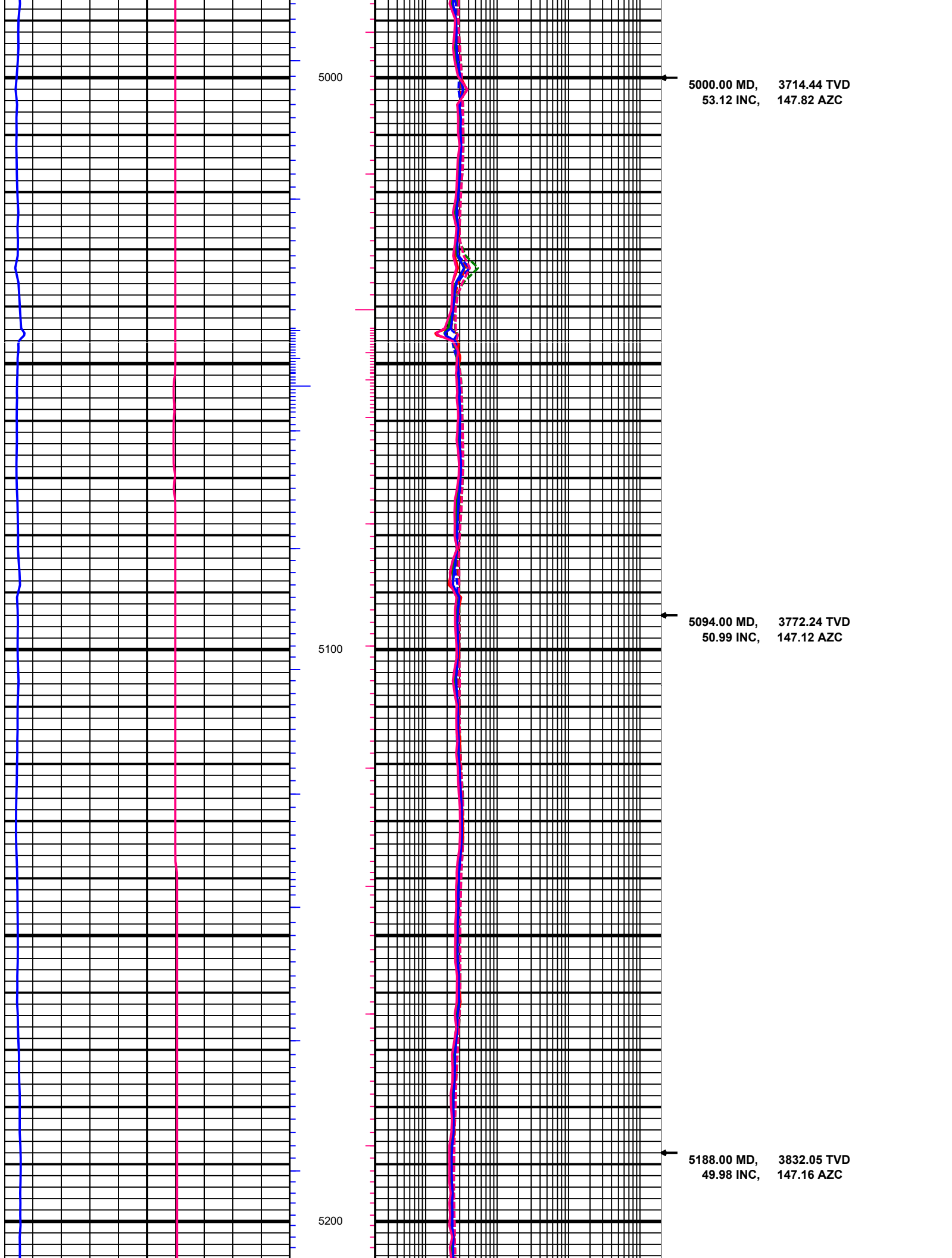
4623.00 MD, 3493.79 TVD
53.96 INC, 149.41 AZC

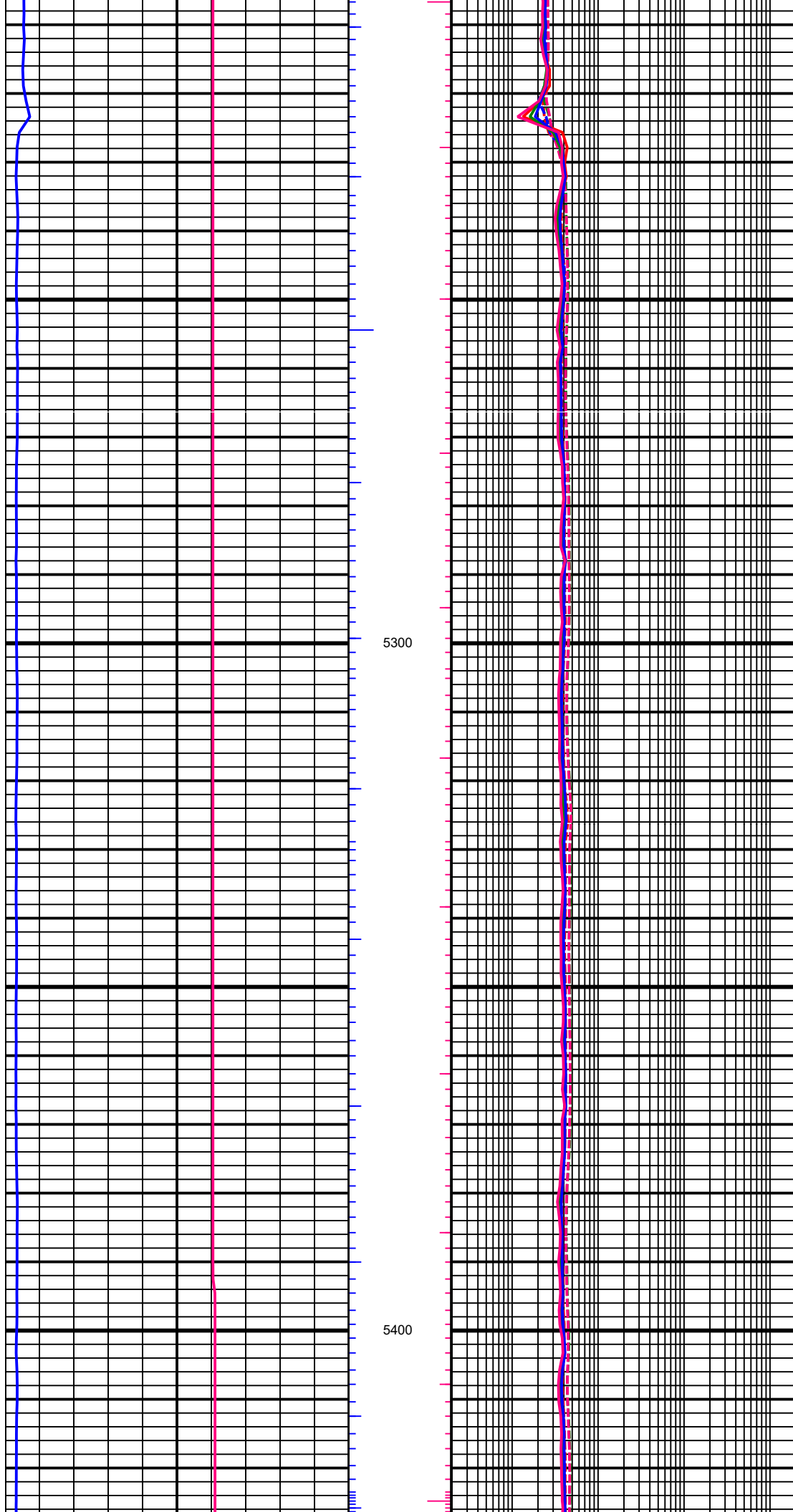
4717.00 MD, 3548.69 TVD
54.57 INC, 149.06 AZC



4812.00 MD, 3603.37 TVD
55.15 INC, 148.88 AZC

4906.00 MD, 3658.23 TVD
53.43 INC, 148.17 AZC

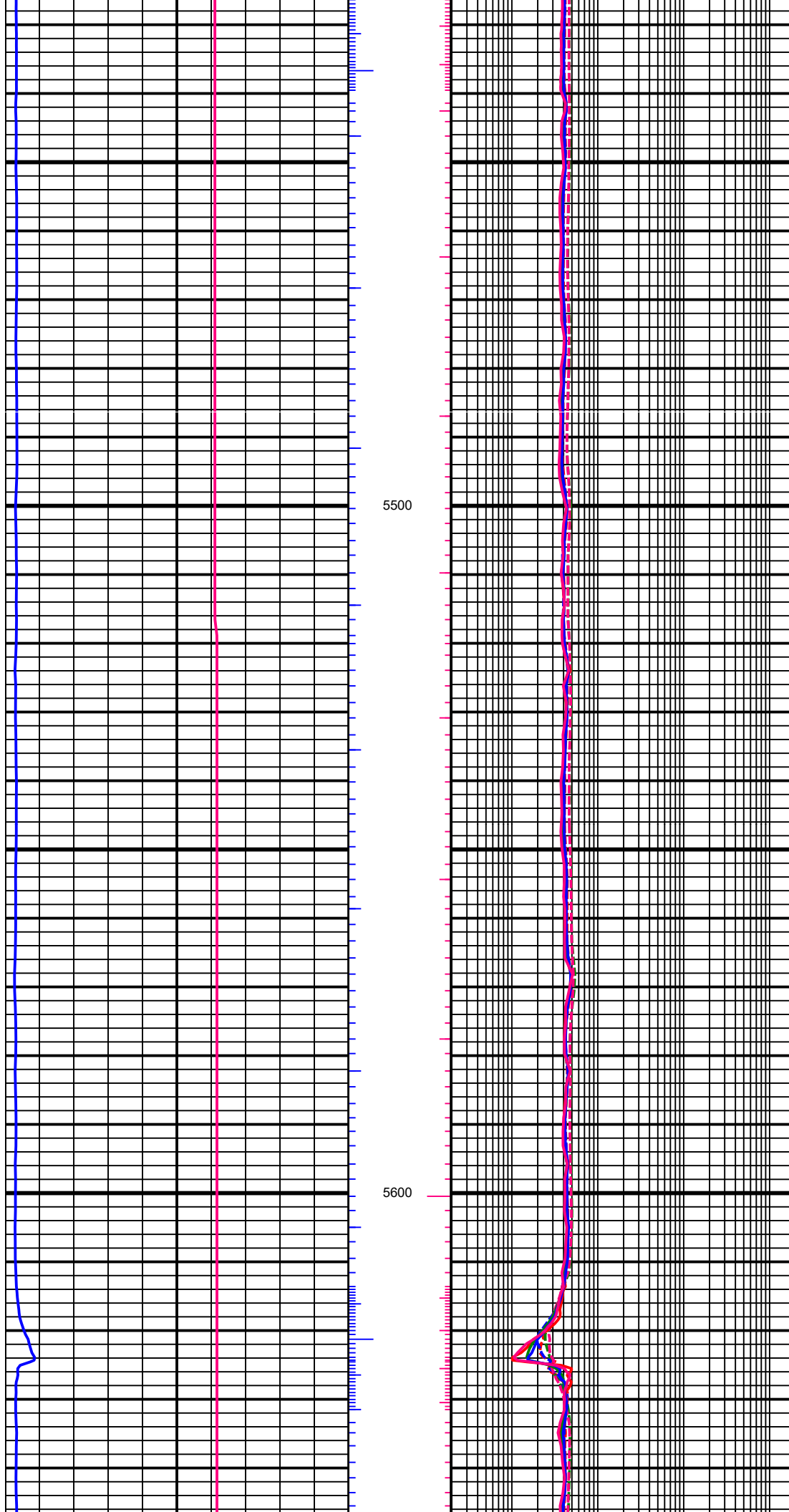




5281.00 MD, 3893.52 TVD
47.28 INC, 150.20 AZC

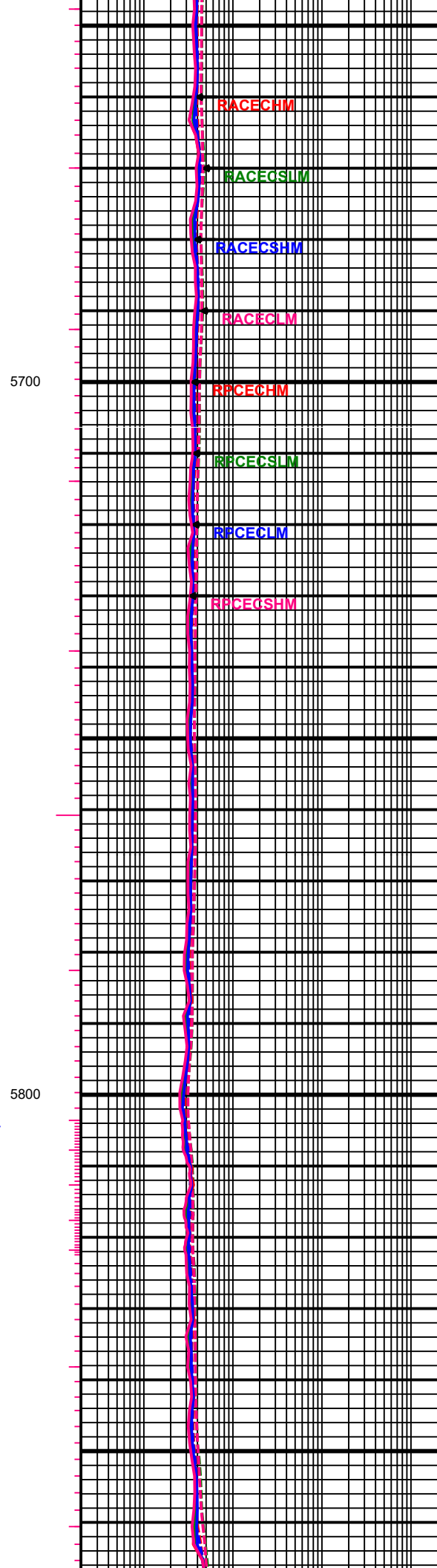
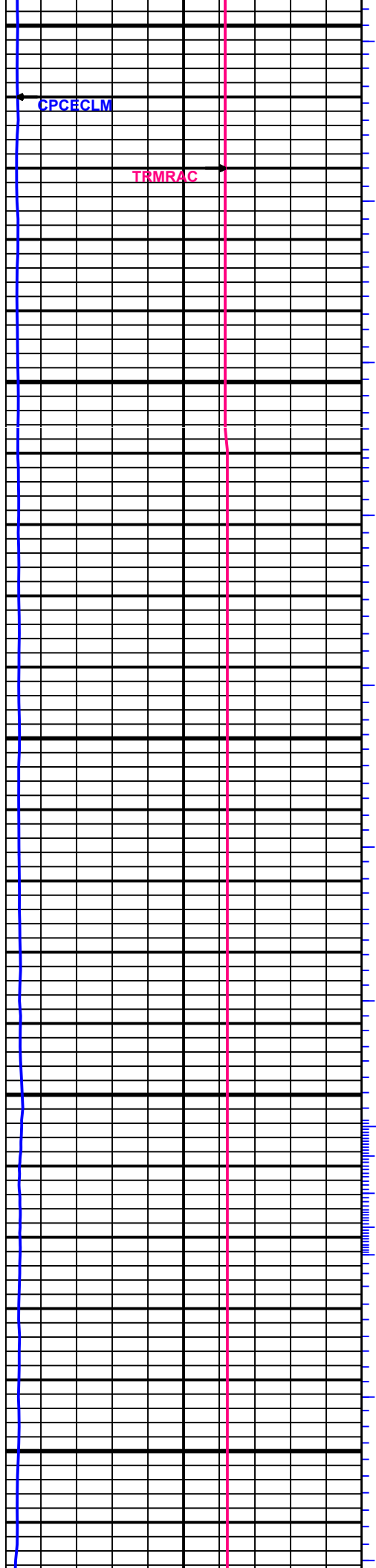


5376.00 MD, 3956.24 TVD
50.07 INC, 150.95 AZC



5470.00 MD, 4016.77 TVD
49.76 INC, 150.95 AZC

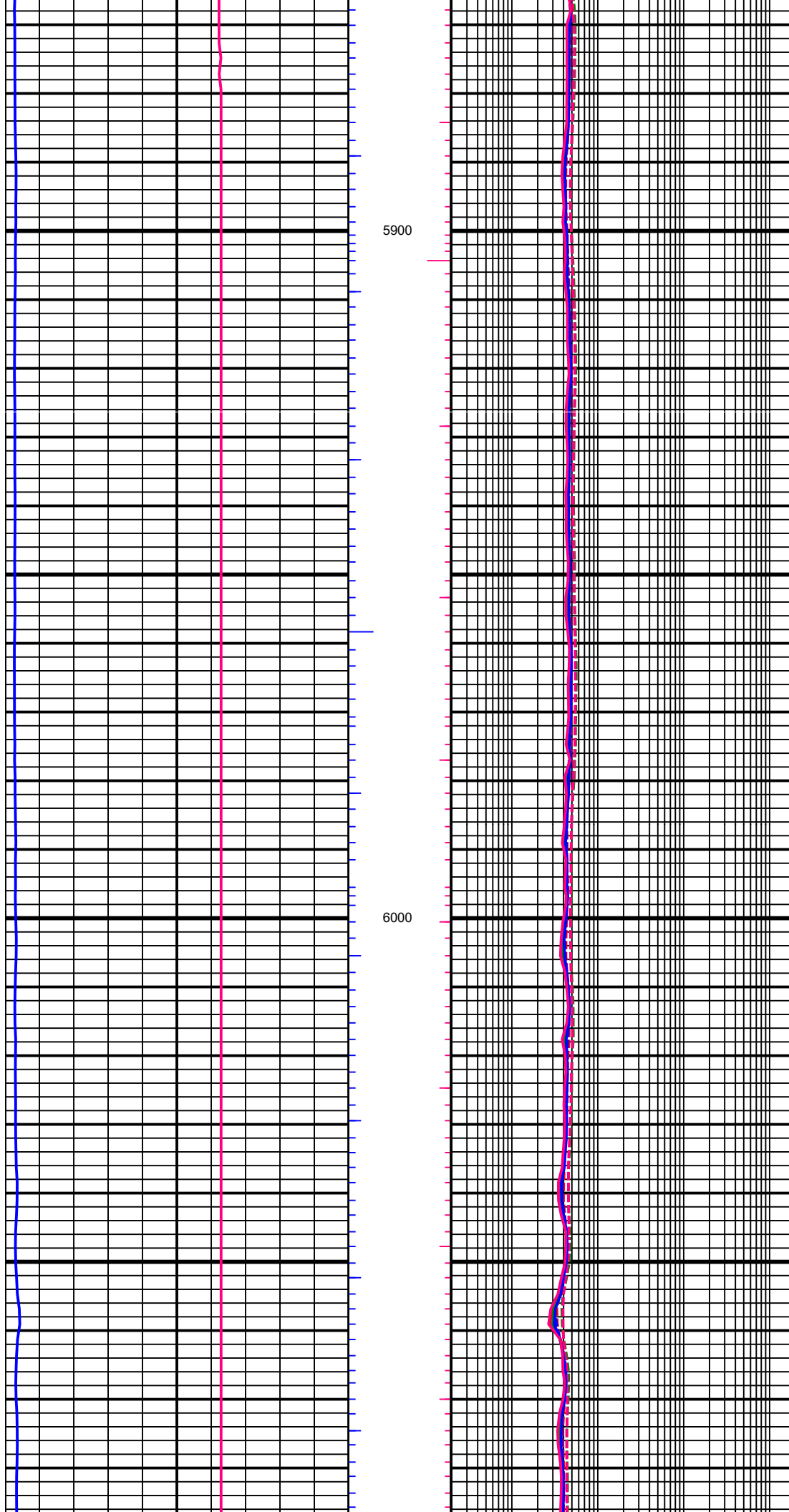
5565.00 MD, 4078.31 TVD
49.49 INC, 150.73 AZC



5661.00 MD, 4141.40 TVD
48.34 INC, 150.47 AZC

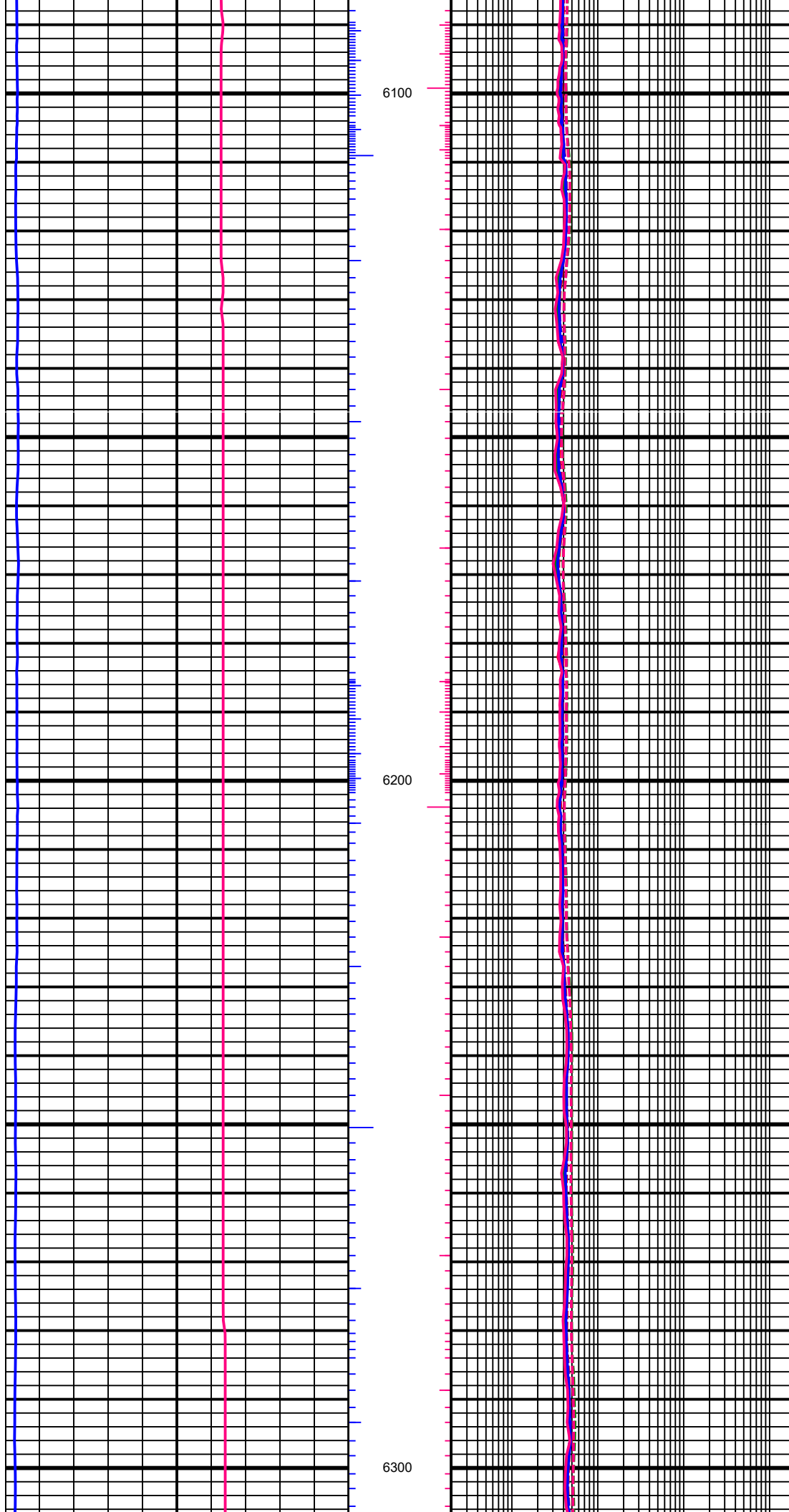
5755.00 MD, 4203.17 TVD
49.49 INC, 150.47 AZC

5850.00 MD, 4265.74 TVD
48.12 INC, 149.72 AZC



← 5944.00 MD, 4326.49 TVD
51.35 INC, 147.95 AZC

← 6039.00 MD, 4386.62 TVD
50.11 INC, 147.25 AZC



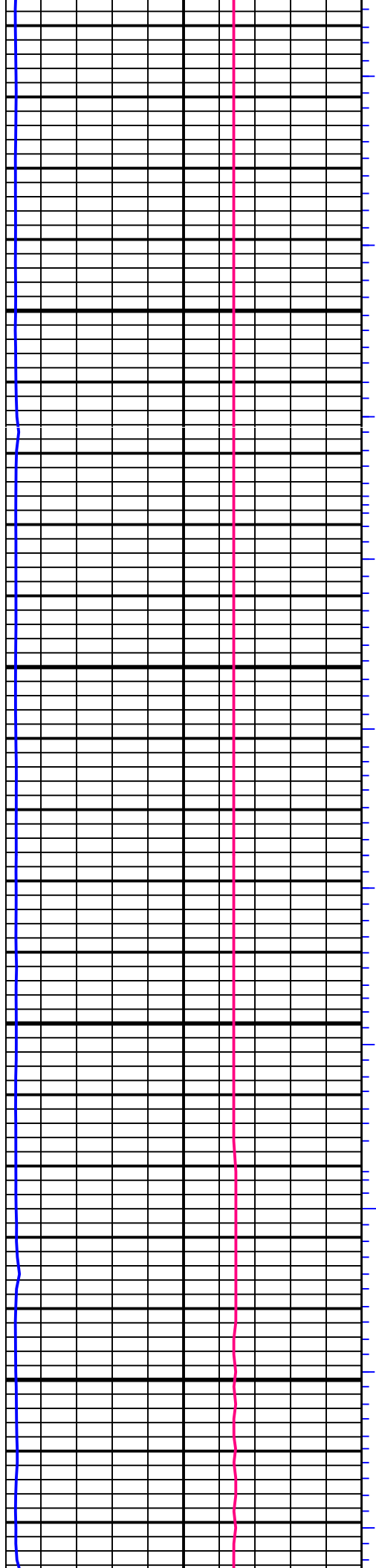
6100

6200

6300

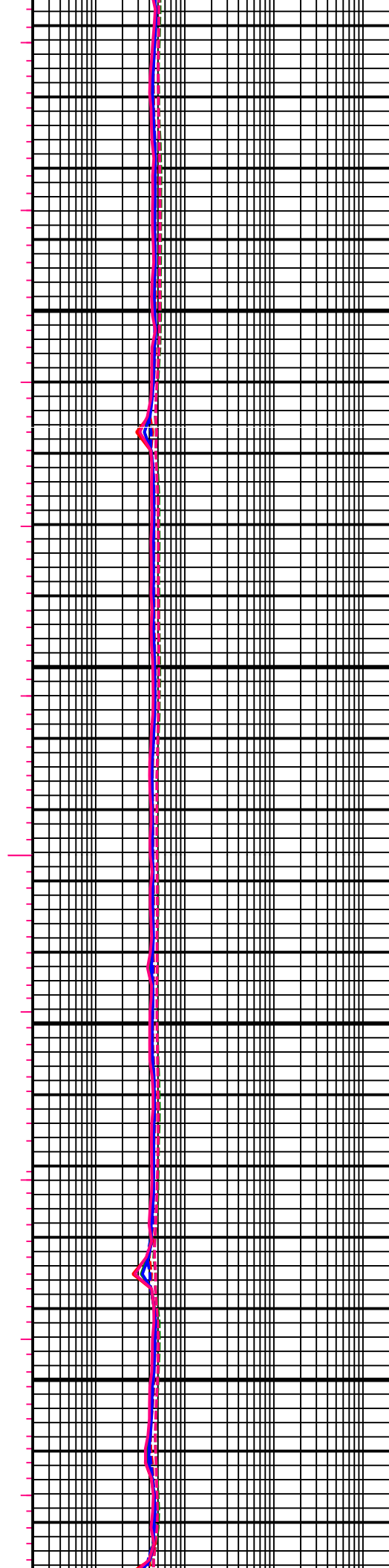
6134.00 MD, 4448.41 TVD
48.74 INC, 147.60 AZC

6229.00 MD, 4509.67 TVD
50.95 INC, 146.15 AZC



6400

6500



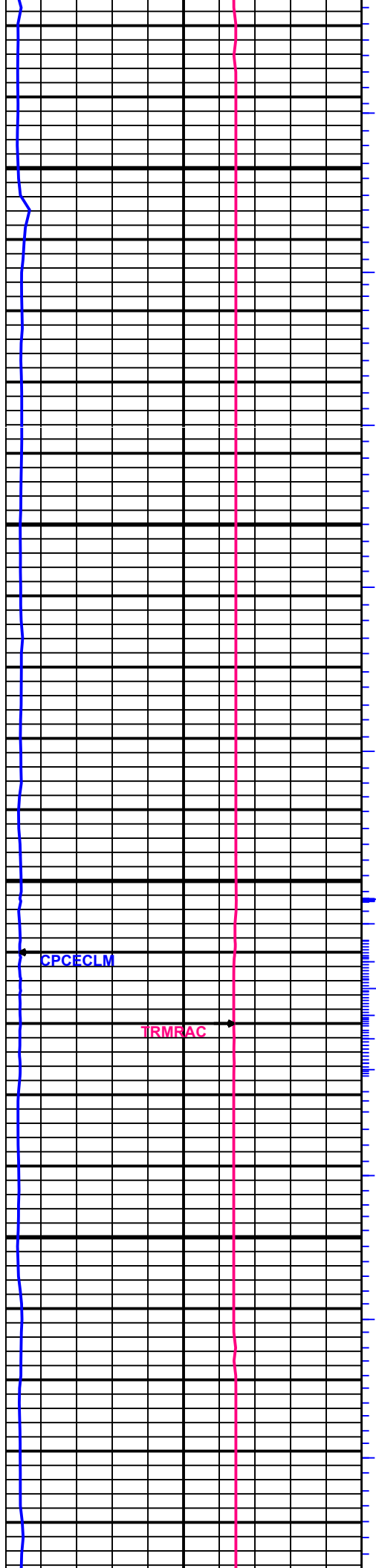
6323.00 MD, 4569.84 TVD
49.45 INC, 145.57 AZC



6418.00 MD, 4630.93 TVD
50.51 INC, 148.00 AZC

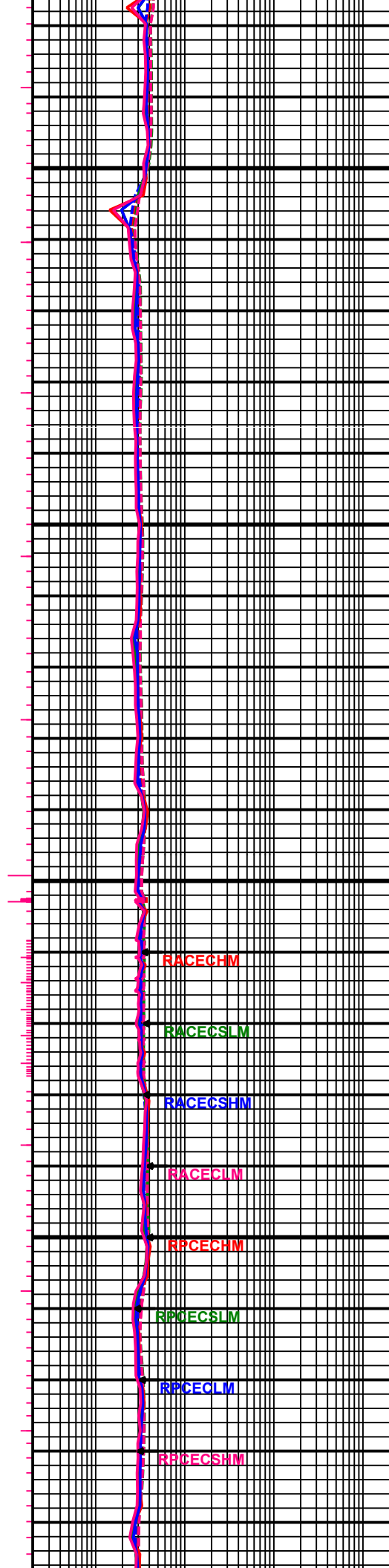


6512.00 MD, 4691.74 TVD
48.87 INC, 147.51 AZC



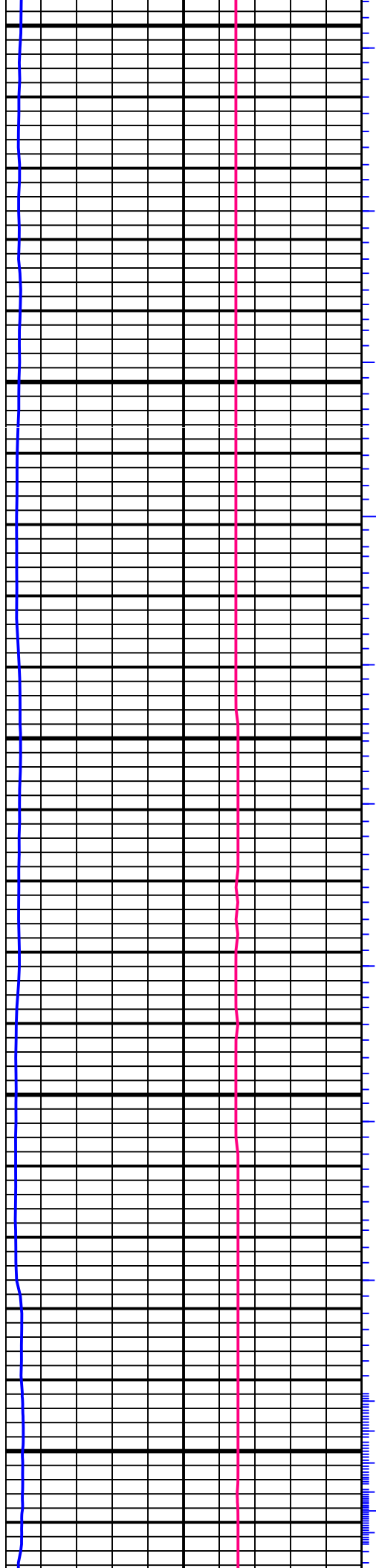
6600

6700



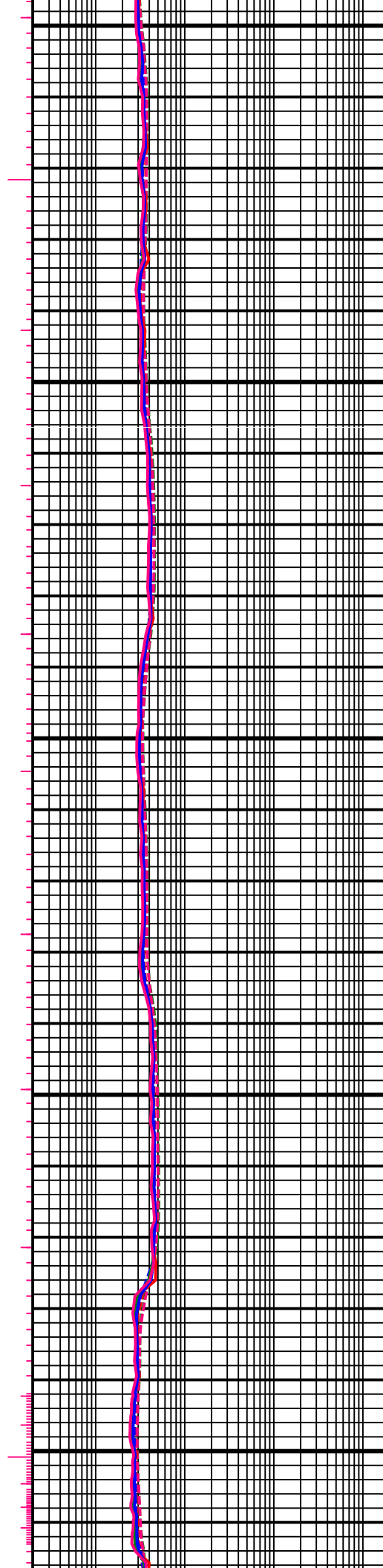
6606.00 MD, 4753.02 TVD
49.76 INC, 147.47 AZC

6701.00 MD, 4813.55 TVD
51.08 INC, 146.19 AZC



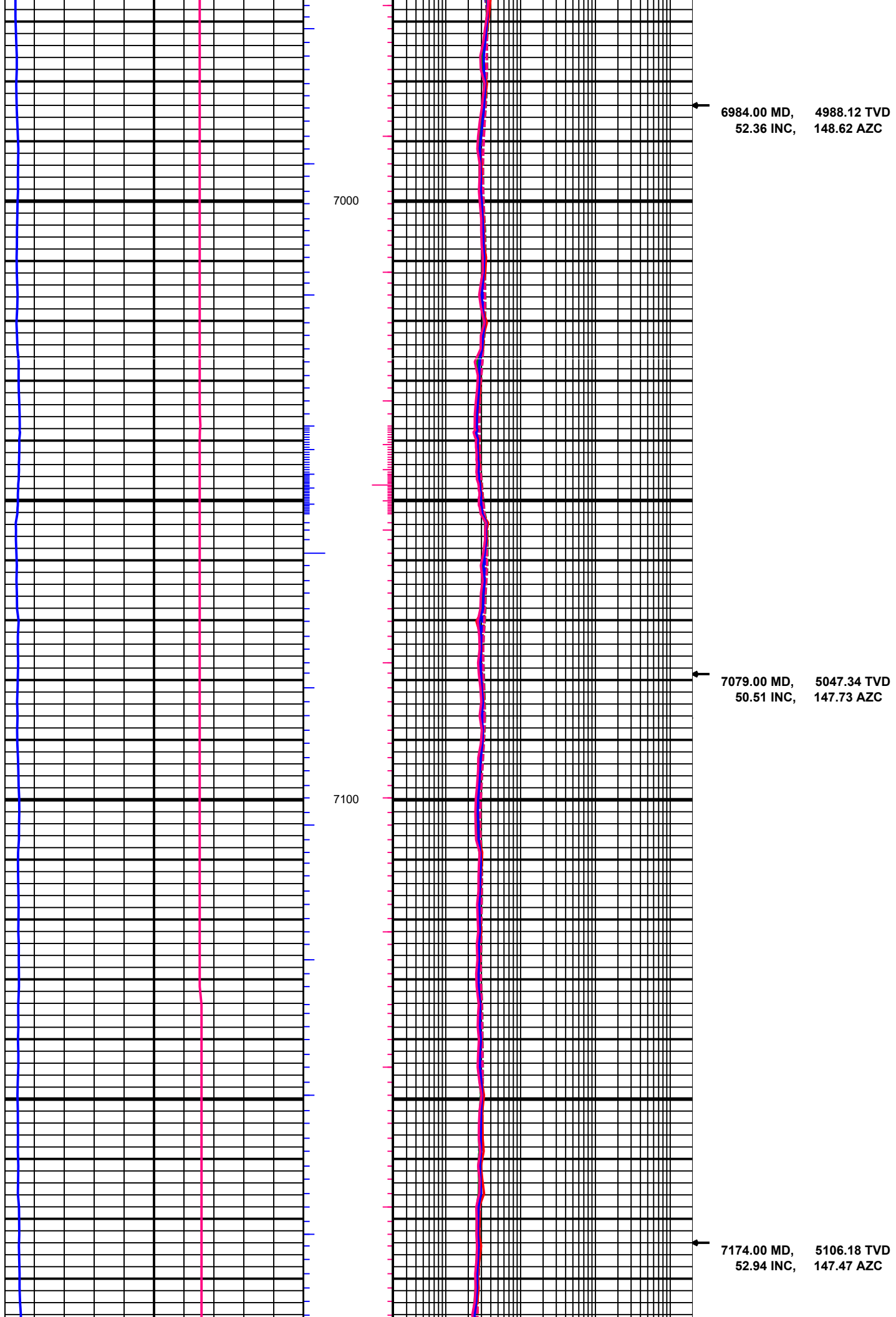
6800

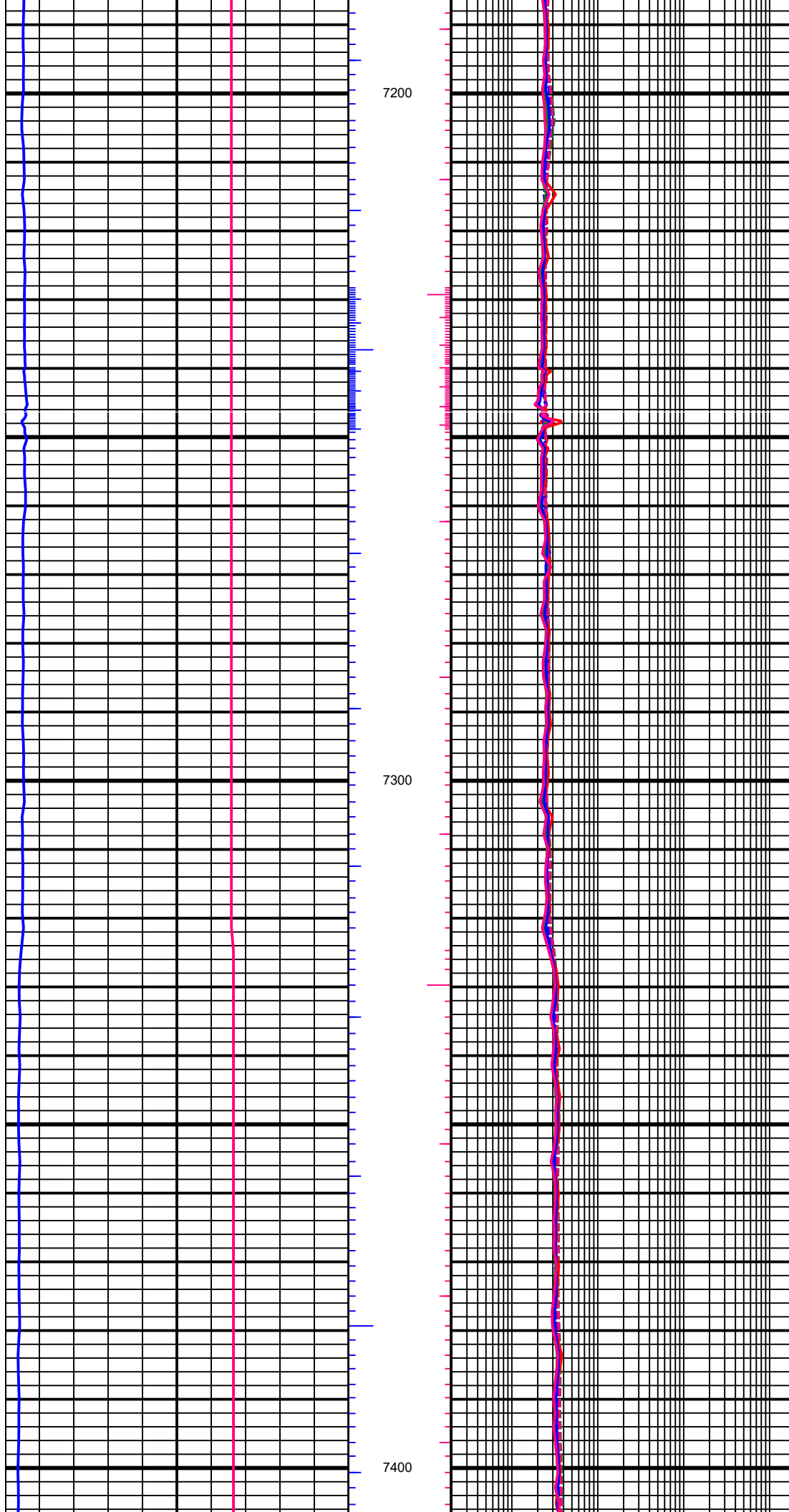
6900



6796.00 MD, 4872.14 TVD
52.76 INC, 147.38 AZC

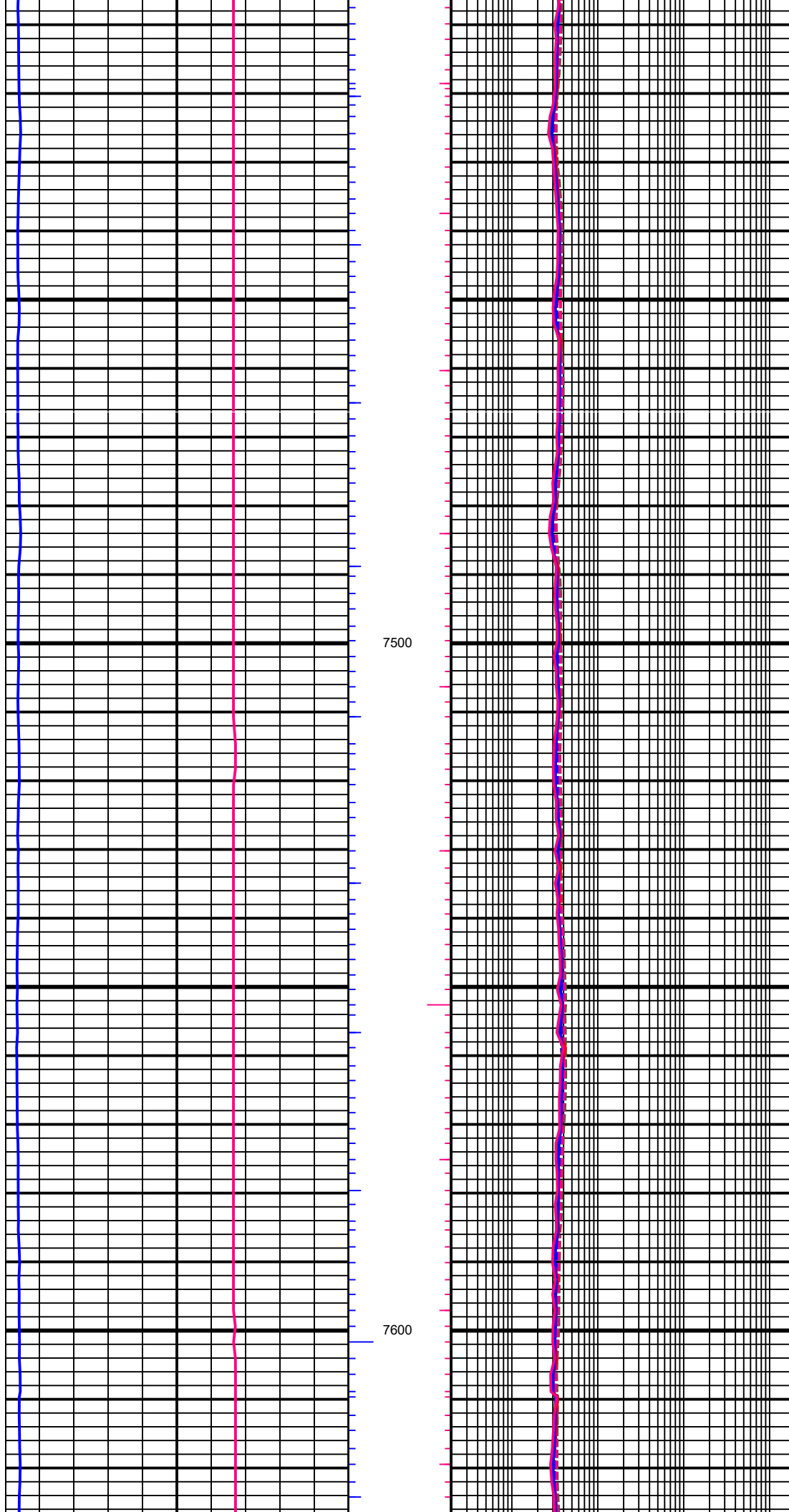
6890.00 MD, 4930.00 TVD
51.26 INC, 146.76 AZC





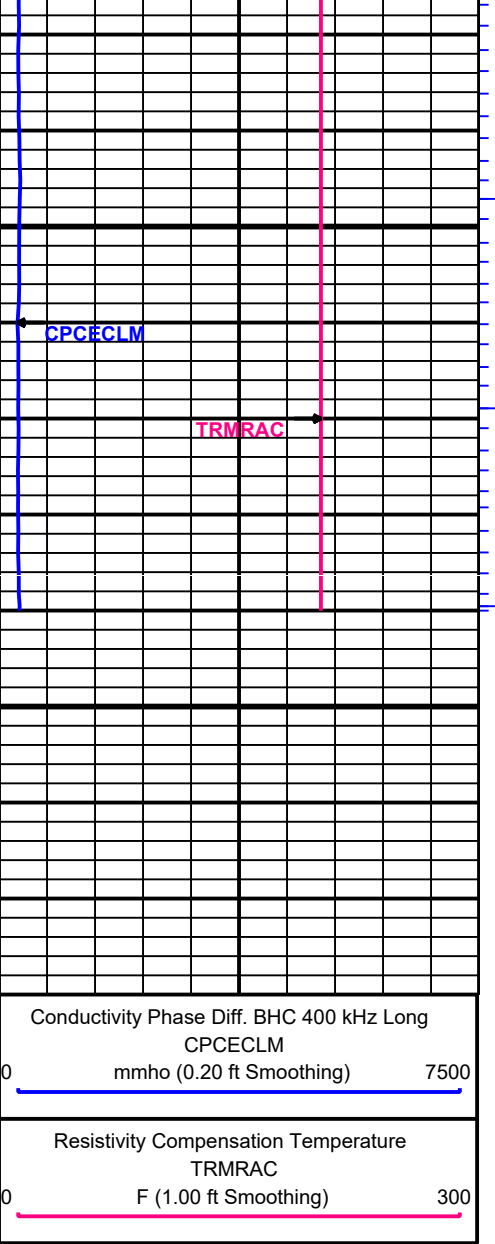
7268.00 MD, 5164.15 TVD
50.91 INC, 147.07 AZC

7362.00 MD, 5222.26 TVD
52.72 INC, 148.26 AZC



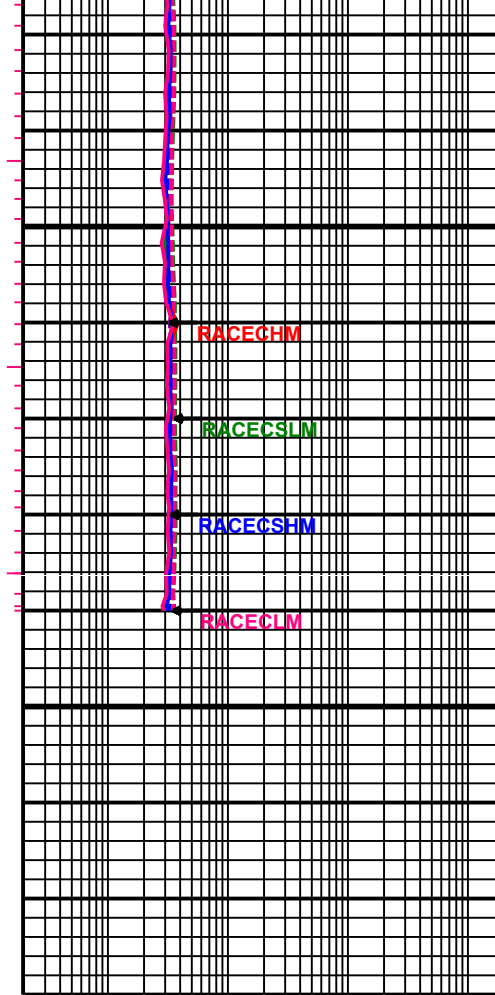
7457.00 MD, 5281.10 TVD
50.73 INC, 147.95 AZC

7551.00 MD, 5340.07 TVD
51.57 INC, 148.00 AZC

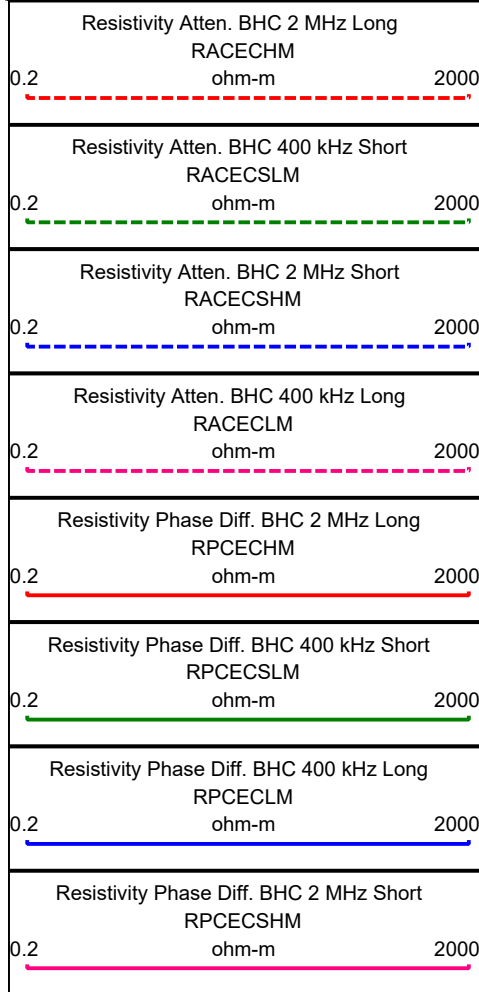


7700

7730
1:240
FEET
MD



7646.00 MD, 5400.45 TVD
49.49 INC, 147.07 AZC



Directional Surveys