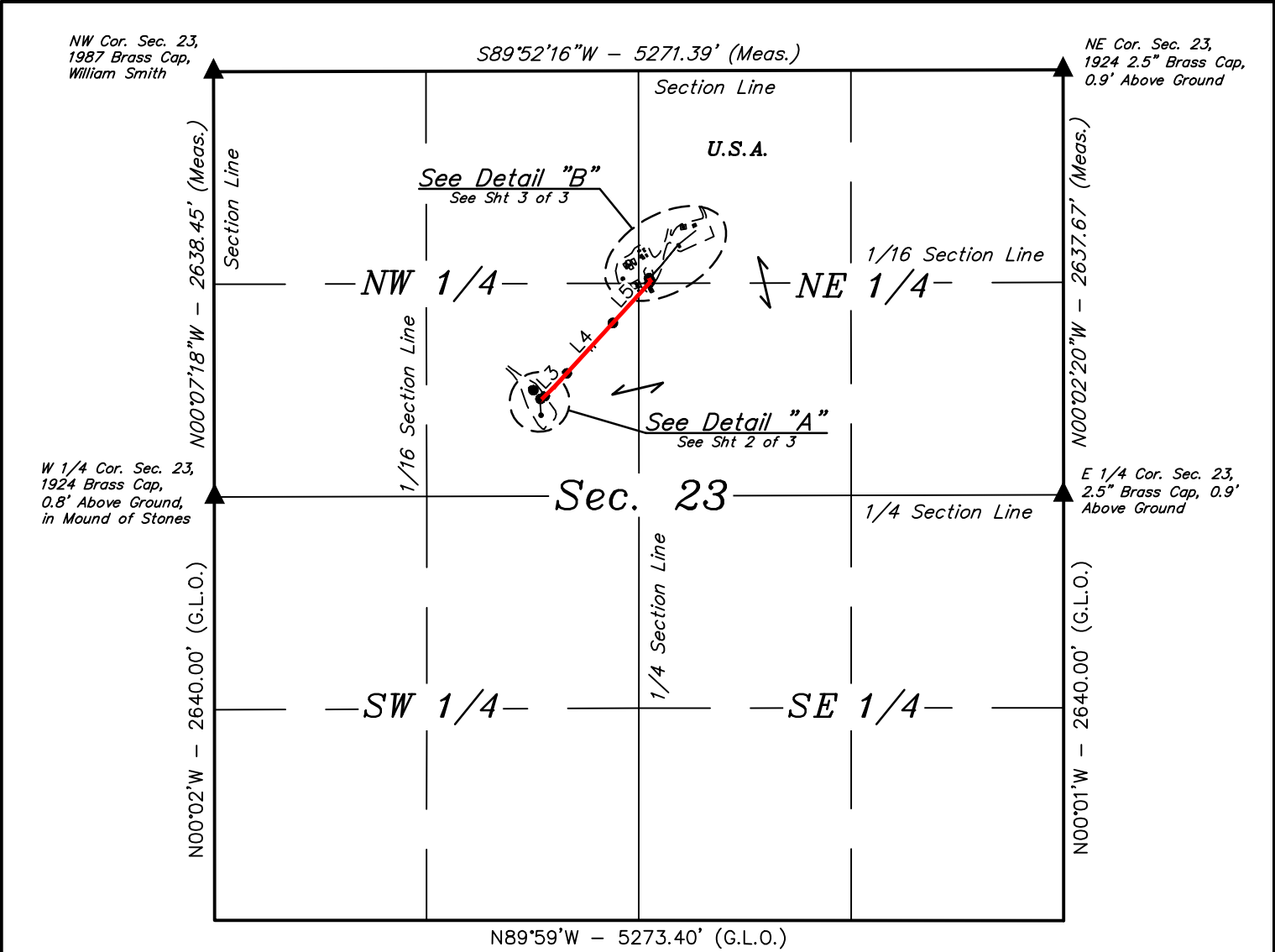


MOFFIT COUNTY, COLORADO





LINE TABLE			LINE TABLE		
LINE	DIRECTION	LENGTH	LINE	DIRECTION	LENGTH
L1	S38°52'19"E	69.90'	L5	N42°26'40"E	335.25'
L2	N57°18'09"E	32.77'	L6	N26°01'13"E	13.67'
L3	N44°00'24"E	196.61'	L7	N26°06'57"W	18.67'
L4	N42°22'46"E	423.20'			

AS-BUILT OIL PIPELINE DESCRIPTION

BEGINNING AT A POINT IN THE SE 1/4 NW 1/4 OF SECTION 23, T12N, R100W, 6th P.M., WHICH BEARS N71°29'01"E 2086.86' FROM THE WEST 1/4 CORNER OF SAID SECTION 23, THENCE S38°52'19"E 69.90'; THENCE N57°18'09"E 32.77'; THENCE N44°00'24"E 196.61'; THENCE N42°22'46"E 423.20'; THENCE N42°26'40"E 335.25'; THENCE N26°01'13"E 13.67'; THENCE N26°06'57"W 18.67' TO A POINT IN THE NW 1/4 NE 1/4 OF SAID SECTION 23 AND THE POINT OF TERMINATION, WHICH BEARS S63°16'28"E 2876.96' FROM THE NORTHEAST CORNER OF SAID SECTION 23. BASIS OF BEARINGS IS THE NORTH LINE OF SAID SECTION 23 WHICH IS ASSUMED TO BEAR S89°52'16"W.

POINT OF BEGINNING BEARS N71°29'01"E 2086.86' FROM THE WEST 1/4 CORNER OF SECTION 23, T12N, R100W, 6th P.M.

POINT OF TERMINATION BEARS S63°16'28"E 2876.96' FROM THE NORTHEAST CORNER OF SECTION 23, T12N, R100W, 6th P.M..



LENGTH TABLE	
FEET	RODS
1090.07	66.06

▲ = SECTION CORNERS LOCATED.

FILE: W-2344-A1

Sheet 1 of 3



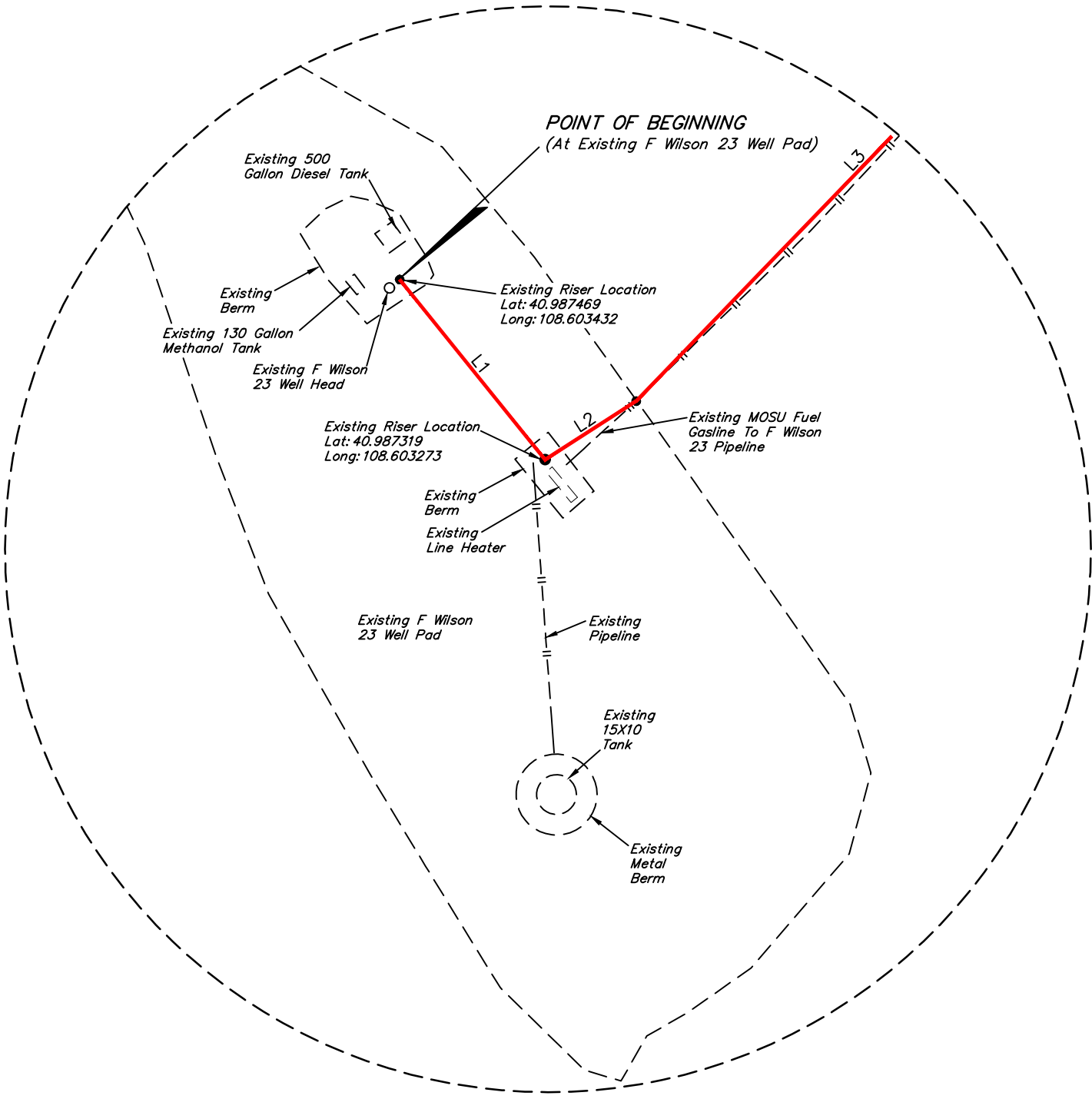
UELS, LLC
Corporate Office * 85 South 200 East
Vernal, UT 84078 * (435) 789-1017



WEXPRO COMPANY

F WILSON 23
ON U.S.A. LANDS IN
SEC 23, T12N, R100W, 6th P.M.
MOFFIT COUNTY, COLORADO

SURVEYED BY	CODY RICH, T.P.	10-21-19	SCALE
DRAWN BY	B.L.B.	10-24-19	1" = 1000'
AS-BUILT OIL LINE			



Detail "A"
No Scale

CERTIFICATE

THIS IS TO CERTIFY THAT THE ABOVE PLAT WAS PREPARED FROM FIELD NOTES OF ACTUAL SURVEYS MADE BY ME OR UNDER MY SUPERVISION AND THAT THE SAME ARE TRUE AND CORRECT TO THE BEST OF MY KNOWLEDGE AND BELIEF.

REGISTERED LAND SURVEYOR
REGISTRATION NO. 38391
STATE OF COLORADO

COLORADO REGISTERED LAND SURVEYOR
J. Du Himes
#38391
10-28-19

FILE: W-2344-A3

Sheet 2 of 3



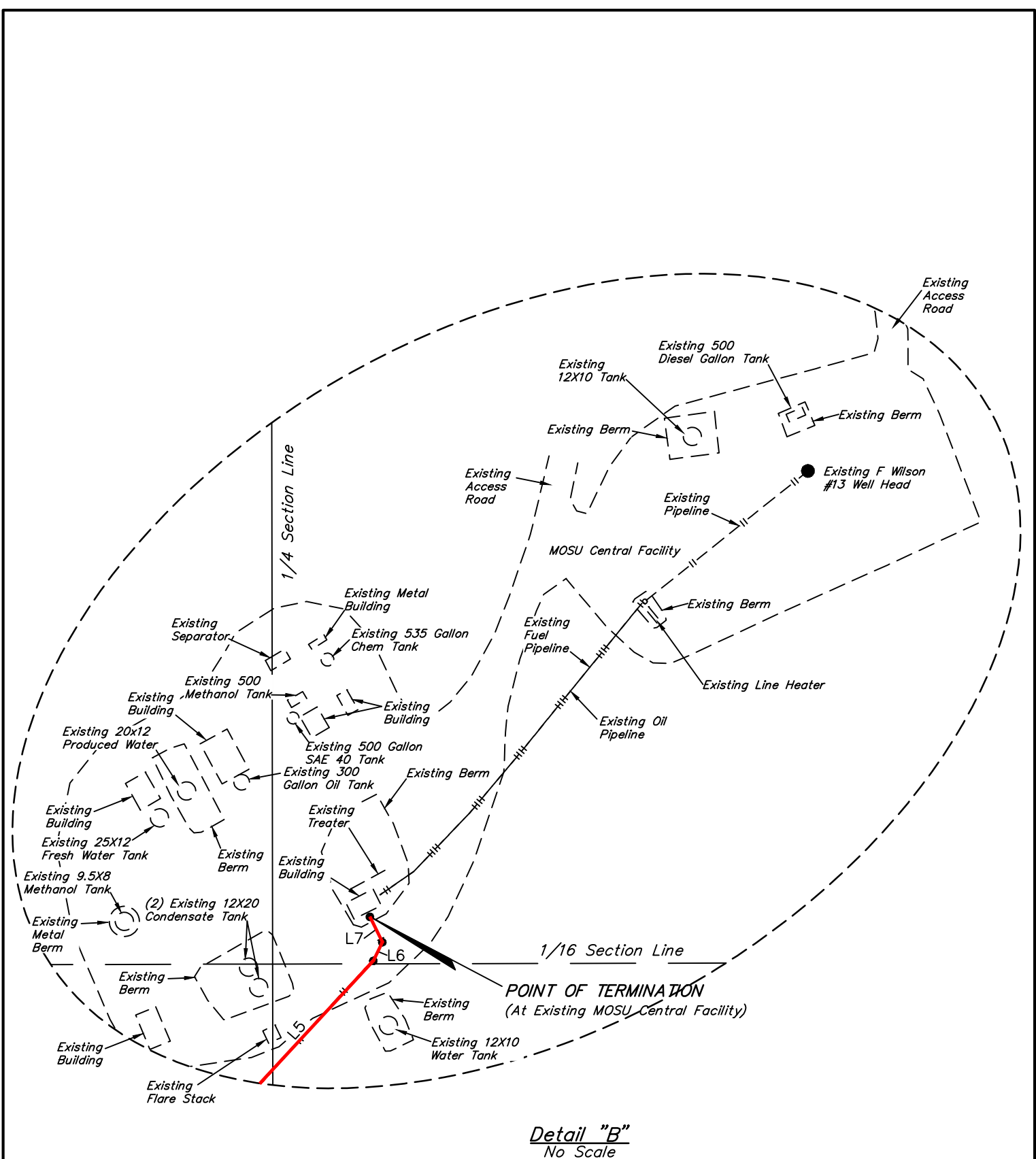
WEXPRO COMPANY

**F WILSON 23
ON U.S.A. LANDS IN
SEC 23, T12N, R100W, 6th P.M.
MOFFIT COUNTY, COLORADO**

SURVEYED BY	CODY RICH, T.P.	10-21-19	SCALE
DRAWN BY	B.L.B.	10-24-19	N/A
AS-BUILT OIL LINE			



UELS, LLC
Corporate Office * 85 South 200 East
Vernal, UT 84078 * (435) 789-1017



CERTIFICATE

THIS IS TO CERTIFY THAT THE ABOVE PLAT WAS PREPARED FROM FIELD NOTES OF ACTUAL SURVEYS MADE BY ME OR UNDER MY SUPERVISION AND THAT THE SAME ARE TRUE AND CORRECT TO THE BEST OF MY KNOWLEDGE AND BELIEF.

REGISTERED LAND SURVEYOR
REGISTRATION NO. 38391
STATE OF COLORADO

FILE: W-2344-A3

Sheet 3 of 3



WEXPRO COMPANY

F WILSON 23
ON U.S.A. LANDS IN
SEC 23, T12N, R100W, 6th P.M.
MOFFIT COUNTY, COLORADO

SURVEYED BY	CODY RICH, T.P.	10-21-19	SCALE
DRAWN BY	B.L.B.	10-24-19	N/A
AS-BUILT OIL LINE			



UELS, LLC
Corporate Office * 85 South 200 East
Vernal, UT 84078 * (435) 789-1017