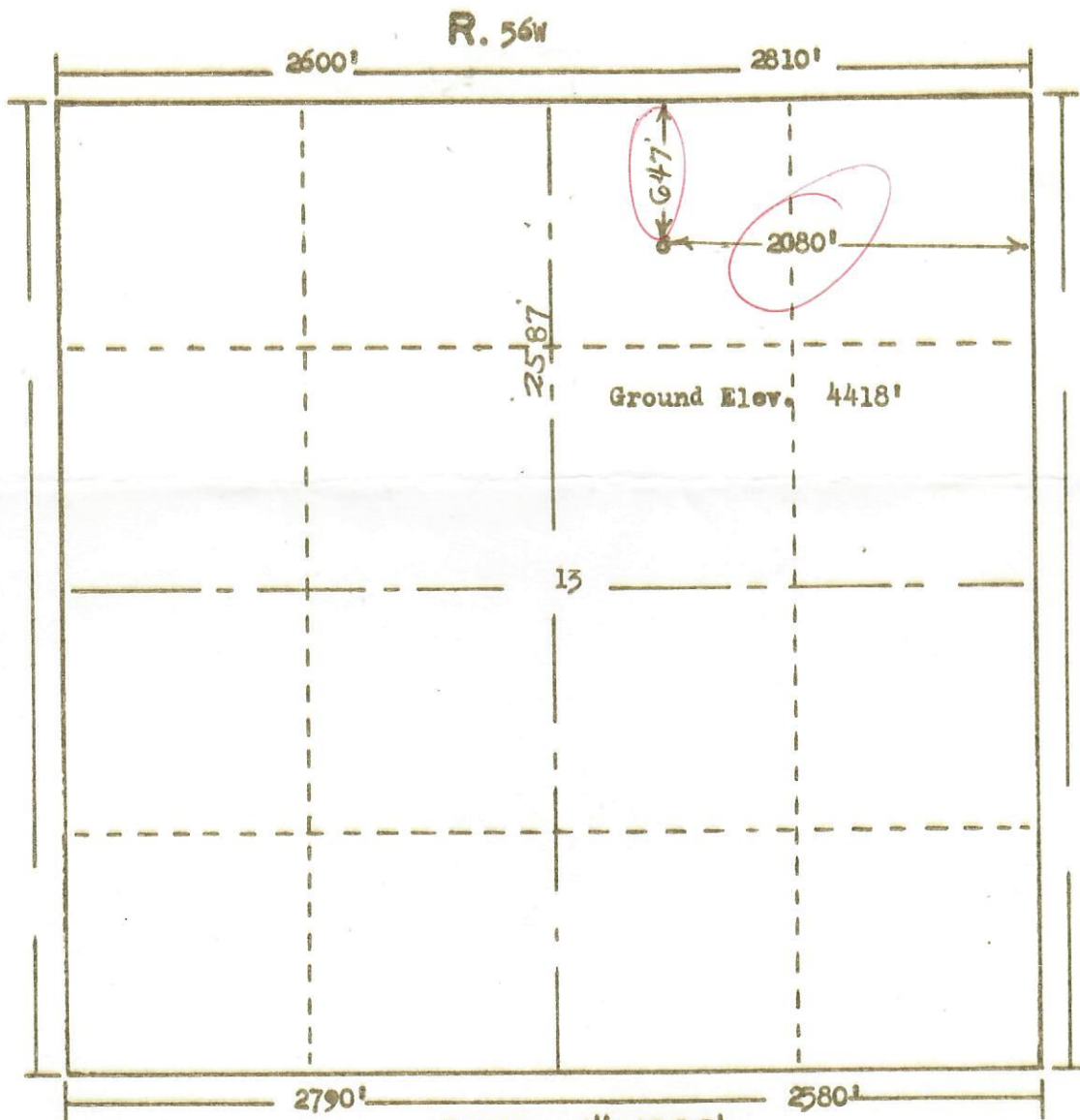




00789296

T.
23
N

Scale ... 1" = 1000'

Powers Surveyors, Inc. of Denver, Colorado
has in accordance with a request from Mr. Gaseh
for Toltek Drlg. Co. & Tom Bessels determined the
Location of No. 1 Darland Trust
to be CNW NE Section 13 Township 9N
Range 56W of the 6th Principal Meridian
Weld County, Colorado

I hereby certify that this plat is an
accurate representation of a correct
survey showing the location of

Date: 8-12-66

B. G. Holloway
Licensed Land Surveyor No. 2853
State of Colorado

RECEIVED
AUG 23 1966
OIL & GAS
CONSERVATION COMMISSION

66-323